



# COVID-19 AND OTHER EMERGING PUBLIC HEALTH TOPICS

## BOARD OF COMMISSIONER UPDATE

DECEMBER 9, 2022

Data as of December 5, 2022

### CONTENTS

<b>EXECUTIVE SUMMARY .....</b>	<b>2</b>
<b>COVID-19 MITIGATION COMPONENTS.....</b>	<b>2</b>
<b>ENHANCED ABILITY TO TEST .....</b>	<b>3</b>
COUNTY-LEVEL DATA AS OF NOVEMBER, 28 2022 .....	3
<b>CASE INVESTIGATION AND CONTACT TRACING .....</b>	<b>3</b>
ALLEGAN COUNTY COVID-19 COMMUNITY LEVEL: LOW .....	3
OVERVIEW OF COVID-19 CASES AND DEATHS IN THE LAST TWO WEEKS (11/17/2022-12/1/2022) .....	4
CASE INVESTIGATION .....	5
EXPOSURE LETTERS AND CLOSE CONTACTS IN SCHOOL SETTINGS .....	5
OUTBREAKS & CLUSTERS IN ALLEGAN COUNTY.....	5
LONG TERM CARE & OTHER CONGREGATE CARE FACILITIES (LTCF) .....	6
<b>SUFFICIENT HEALTH CARE CAPACITY.....</b>	<b>6</b>
HOSPITALIZATIONS.....	6
DEATHS (7 DAY AVERAGE).....	6
<b>BEST PRACTICES.....</b>	<b>6</b>
SCHOOLS.....	6
BUSINESSES .....	7
COMMUNICATIONS.....	7
MPOX NAME CHANGE .....	7
NATIONAL INFLUENZA VACCINATION WEEK & THE IMPORTANCE OF GETTING VACCINATED TO PREVENT SEVERE FLU ILLNESS.....	7
COMMUNITY TESTING EVENTS IN ALLEGAN AND HOW TO ORDER MORE AT-HOME TESTS .....	7
<b>COMMUNITY VACCINATION/HERD IMMUNITY/TREATMENT.....</b>	<b>8</b>
COVID-19 VACCINE COVERAGE .....	8
VACCINATION COVERAGE BY AGE GROUP .....	8
VACCINATION COVERAGE BY ZIP CODE.....	8
VACCINE AVAILABILITY .....	9
VACCINE EFFECTIVENESS (VE) .....	9
LOCAL HEALTH DEPARTMENT (LHD) BREAKTHROUGH DATA DISTRIBUTION.....	9
<b>COVID-19 SURVEILLANCE .....</b>	<b>9</b>
<b>EPIDEMIOLOGIC SURVEILLANCE .....</b>	<b>10</b>
<b>SOURCES .....</b>	<b>12</b>
<b>APPENDICES .....</b>	<b>13</b>

**EXECUTIVE SUMMARY**

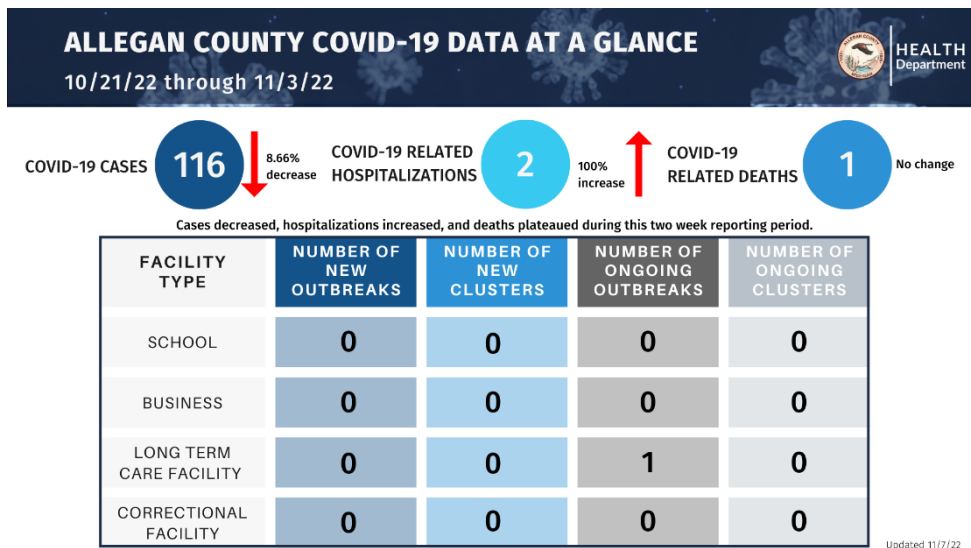
The following report contains COVID-19-related data from **November 17, 2022 to December 1, 2022**, on the 5 mitigation components Allegan County Health Department (ACHD) previously identified. This report contains local COVID-19 data for Allegan County, information on vaccination data, wastewater surveillance, emerging variant updates, and other resources regarding COVID-19 mitigation. This report also contains epidemiological surveillance and health education on other ongoing and emerging public health topics including monkeypox (mpox), and other regional epidemiological topics at a glance. ACHD continues to monitor local, statewide, and global COVID-19 data, and continues to follow the Michigan Department of Health and Human Services (MDHHS) and the Centers for Disease Control and Prevention (CDC) recommendations. Previous BOC reports that may include background information for some of the topics discussed in this current report can be found [here](#).

**NOTE:** Starting January 2023, ACHD will discontinue these bi-monthly COVID-19 and Other Emerging Public Health Topic reports. Public health news and updates will be provided through our bi-monthly community newsletter instead. To sign-up for the newsletter click [here](#). To view past community newsletter updates, click [here](#).

**WHAT'S NEW AT A GLANCE:**

- MDHHS releases Respiratory Syncytial Virus (RSV) tip sheet that includes general and setting-specific information.
- Monkeypox name has been changed to “mpox” by WHO and adopted by CDC, MDHHS, and ACHD.
- National Influenza Awareness Week and importance of getting vaccinated to prevent serious flu illness.
- Community testing events in Allegan move to Wednesdays only, and how to order more at-home test kits.
- FDA announces Bebtelovimab is not currently authorized in the U.S.
- COVID-19 cases **decreased** in this two-week reporting period.
- The Test Positivity Rate for Allegan County is trending **downward**, after trending upward the week prior.

An overview of COVID-19 data in Allegan County from **11/17/22 to 12/1/22** can be found in the graphic below:



**COVID-19 MITIGATION COMPONENTS**

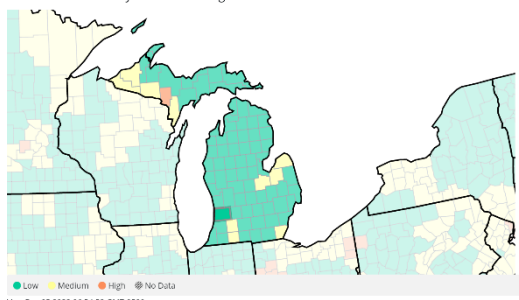


Allegan County currently is at a low community transmission level for COVID-19. **ACHD continues to recommend the following:**

- Staying up-to-date on your COVID-19 vaccines
- Getting tested if you have symptoms, before and after traveling, and before gathering with others.

COVID-19 Community Levels are a tool to help communities decide what prevention steps to take based on the latest data. These Community Levels can be low, medium, or high and **are determined by looking at hospital bed utilization, hospital admissions, and the total number of new COVID-19 cases in an area.** Find more about COVID-19 Community levels [here](#).

COVID-19 Community Levels in Michigan



*Note: Counties surrounding Allegan County may be in a medium or high COVID-19 Community Level. If you work or visit other counties often, make sure to take precautions to protect yourself and others such as wearing a mask, washing your hands often, staying home if you feel sick, and social distancing when possible.*

*Use the CDC's [COVID-19 County Check tool](#) to find out what the community level is for the county you will be visiting.*

## ENHANCED ABILITY TO TEST

COUNTY-LEVEL DATA AS OF November, 28 2022

The Test Positivity Rate for Allegan County is trending **downward**, after trending upward the week prior. See the latest information for Allegan County For the latest information, visit [Dashboard | CDC | MI Start Map](#).

At this stage of the pandemic, percent positivity alone is no longer a strong indicator of the total number of individuals who tested positive, due to several factors – one being at-home testing. It is best to evaluate percent positivity with another metric, such as COVID-19 concentration levels in wastewater, to get a more accurate idea of the prevalence of the virus in an area. **The current 7-day positivity rate for Allegan County as of November 28 was 9.1% with 407.8 daily tests administered per million. This indicates a 2.0% decrease in the 7-day positivity compared to the 10/28/2022 to 11/3/2022 reporting period, which had 468.5 daily tests administered per million.**

At-home tests are currently not reported in the Michigan Disease Surveillance System (MDSS) and therefore, are not included in the test positivity rates or case counts. **See the Appendix for a list of testing resources available to community members.**

## CASE INVESTIGATION AND CONTACT TRACING

ALLEGAN COUNTY COVID-19 COMMUNITY LEVEL: Low

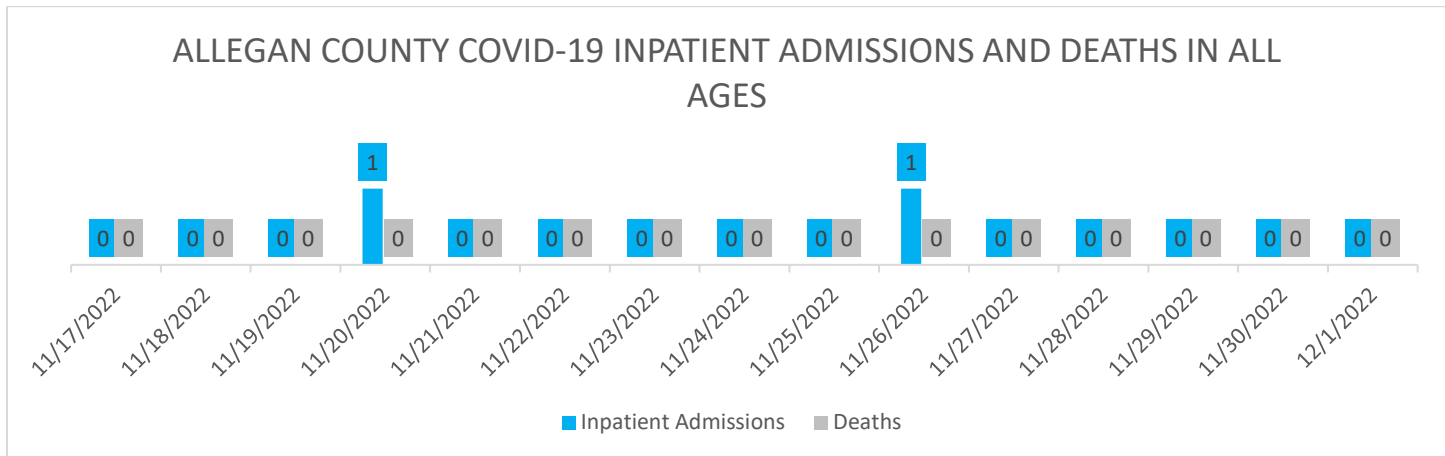
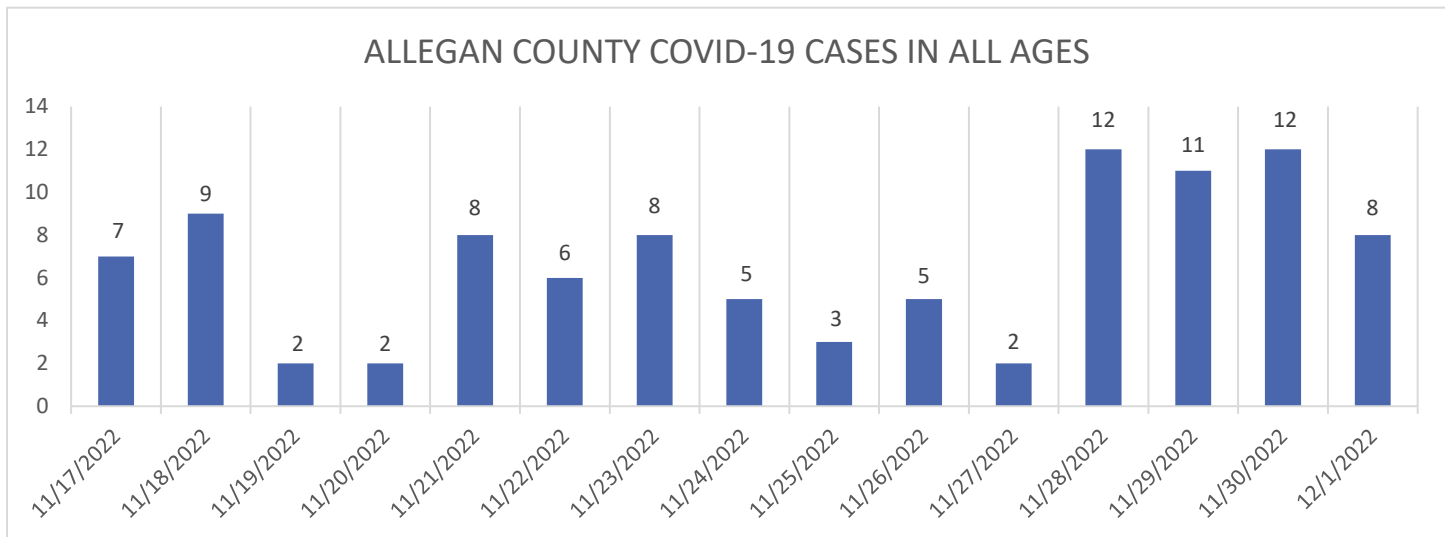
See the latest information for Allegan County For the latest information, visit [Dashboard | CDC | MI Start Map](#). As of 11/30/2022, Allegan County is in a low community level based on the [CDC framework](#). **Data Takeaway: Models showed a decrease in cases**

Data as of December 5, 2022

compared to the 10/28/2022 to 11/3/2022 reporting period. During the period 11/22/2022-11/28/2022, Allegan County's new weekly case rate was 36.4 per 100,000 population with 43 weekly cases.

Weekly cases decreased by more than 9% since the 10/11/2022-10/17/2022 reporting period (47 per 100,000 – 43 total weekly cases).

OVERVIEW OF COVID-19 CASES AND DEATHS IN THE LAST TWO WEEKS (11/17/2022-12/1/2022)



DURING 11/17/2022-12/1/2022 FOR ALLEGAN COUNTY:

- **100 total cases** were reported via the Michigan Disease Surveillance System (MDSS)
  - 75 confirmed cases and 25 probable cases related to SARS-CoV2 infection as reported
- 3.0% of the cases were reported as asymptomatic
- 20.0% of cases were reported as ‘vaccine breakthrough’ cases, which has slightly decreased from the previous two weeks
- **Two** reported **hospitalizations**<sup>1</sup> related to SARS-CoV-2 infection
- There was **zero deaths** related to SARS-CoV-2 infection
- **5.0%** of the cases were reported to be related to international, domestic, and/or in-state travel
- From 11/17/2022 to 11/30/2022, the positivity rate<sup>2</sup> was a reported 9.0%

<sup>1</sup> COVID-19 may not be a primary cause of hospitalization in some of the reported cases in MDSS due to current capacity and data limitations; these data reported in MDSS are often limited by factors such as delayed case investigations and data back-filling

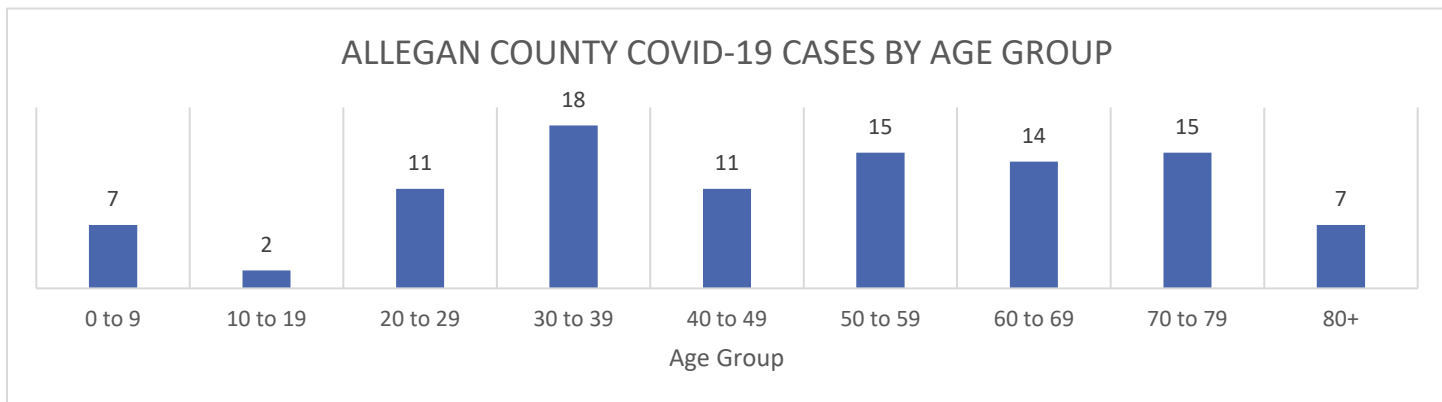
<sup>2</sup> As reported in the MI-HAN Regional Data File; Positivity Rate is calculated for percent positive persons for day and county

**ACHD continues to monitor the COVID-19 metrics for hospitalizations and deaths as this can show the risk of a medically significant COVID-19 variant or healthcare system strain.**

**CASE INVESTIGATION<sup>3</sup>**

ACHD is currently working to investigate all communicable disease cases. During the case investigation process, ACHD works to ensure all basic needs are being met for individuals and their families. All cases receive a Patient Education Genius (PEG) notification that is provided via email or text messages for a case investigation form.

**CASES IN THE LAST TWO WEEKS, BY AGE GROUP 11/17/2022 to 12/1/2022)**



From 11/17/2022 TO 12/1/22 in MDSS: 18.0% of cases were reported in the 30 to 39 age group, which had the highest number of cases during this timeframe, and closely followed by the 50 to 59, and 70 to 79 groups, at 15.0%, each. In comparison to the previous reporting period (10/21/22 to 11/3/22), case counts have slightly decreased for individuals in the 0 to 9 ages (Down to 7 from 9 previously).

- **6.0%** of cases were **in quarantine** at the time of symptom onset or positive test
- **1.0%** of investigated cases were **household close contacts<sup>4</sup>**
- **1.0%** of cases were reported as **community contacts<sup>5</sup>**
- **1.0%** of cases were close contacts to those who work or live in a **high-risk/congregate facility**

**Notifying close contacts helps individuals know about exposure and allows close contacts to make decisions based on their own risk assessment.**

**EXPOSURE LETTERS AND CLOSE CONTACTS IN SCHOOL SETTINGS**

As of September 20, ACHD is using a dashboard format for each school building to notify parents and families of potential exposures to certain reportable communicable diseases, rather than sending potential exposure letters.

This dashboard can be found on the [ACHD Website](#). If individuals do not have access to the internet or have language needs please call the Health Department at (269) 673-5411 option 1 for assistance.

**OUTBREAKS & CLUSTERS IN ALLEGAN COUNTY**

Type of Setting	Total Number of Outbreaks <sup>1</sup>
School	20
Business	8
Long Term Care <sup>1</sup>	32
Other Congregate Facilities <sup>1</sup>	3

<sup>3</sup> Case investigation consists of contacting the individual and asking standard questions related to the disease and identifying those who might have been exposed.

<sup>4</sup> Household contact: person lived with someone who tested positive and later tested positive themselves.

<sup>5</sup> Community contact: person who was identified as a close contact in a setting other than a household

The table to the right shows the number of outbreaks<sup>6</sup> that ACHD has identified for high-risk settings from October 12, 2021 to December 1, 2022. **ACHD has identified no new outbreaks related to Long-Term Care Facilities<sup>7</sup> and no new outbreaks related to Schools, since the last update on October 20, 2022;** there was zero ongoing outbreaks reported to MDHHS as of December 1, 2022.

ACHD has not identified any new outbreaks for businesses since February 17, 2022. ACHD has developed COVID-19 Business Mitigation Strategies Survey for businesses, Long-Term Care Facilities, daycares and schools to provide us with information on the current mitigation strategies they have in place. The surveys are sent out when an outbreak has been identified at a location.

## LONG TERM CARE & OTHER CONGREGATE CARE FACILITIES (LTCF)

From January 2022 to December 1, 2022, ACHD connected **23** LTCFs in Allegan County with the IPRAT<sup>8</sup> Team for additional mitigation assistance<sup>9</sup>. Refer to [MDHHS Data and Modeling](#) for overall statewide LTCF case counts in residents and staff. **ACHD shares forecasting wastewater readings with long-term and congregate care facilities in the monthly LTCF Newsletters, to help inform their COVID-19 mitigation strategies.**

623 resident cases and 55 resident deaths reported from January 1, 2020, to November 22, 2022<sup>10</sup>

935 staff cases have been reported from January 1, 2020, to November 22, 2022

## SUFFICIENT HEALTH CARE CAPACITY

### HOSPITALIZATIONS

Allegan County falls in the Region 5 Health Care Coalition. Some community members will also access hospitals in the Region 6 Health Care Coalition (Grand Rapids-Holland Region). For the latest information, visit [Dashboard | CDC | MI Safe Start Map](#).

Find the current percentage of inpatient beds treating COVID-19 patients, for the [Grand Rapids Region](#) (Region 6), and [Kalamazoo Region](#) (Region 5). The **Grand Rapids Region** had **4.6%** of inpatient beds that are COVID-19 positive, as of November 28, 2022, which is **0.6% lower** than the previous reporting period. The **Kalamazoo Region** has **4.8%** of inpatient beds that are COVID-19 positive, as of November 28, 2022, which is **2.3% lower** than the previous reporting period.

### HOSPITALS IN THE ALLEGAN COUNTY AREA

Hospital bed capacity information can be found on the MDHHS website: [Statewide Available PPE and Bed Tracking \(Michigan.gov\)](#)

### PEDIATRIC HOSPITALIZATIONS

Michigan pediatric intensive care unit hospital beds are currently 89% occupied, according to data from the Michigan Health & Hospital Association (MHA) and Michigan Department of Health & Human Services (MDHHS). Hospitals are also reporting large surges in young patients visiting emergency departments, for both emergent and non-emergent care.

### DEATHS (7 DAY AVERAGE)

The 7-day average for daily deaths is currently less than 1, and is reflected as 0 on the Michigan Safe Start Map. For a complete view of the 7-day average daily deaths for Allegan and other counties over the course of the pandemic visit, [Dashboard | CDC | MI Start Map](#)

## BEST PRACTICES

### SCHOOLS

<sup>6</sup> Outbreak investigation codes are assigned by the first date of onset

<sup>7</sup> Data from 10/21/2021

<sup>8</sup> MDHHS offers further support for facilities via the Infection Prevention and Resource Assessment Team (iPRAT) when ACHD identifies facilities that are experiencing a large number of positive COVID-19 tests.

<sup>9</sup> ACHD provides mitigation assistance to LTCFs that are identified as an outbreak facility through case investigations

<sup>10</sup> The information above represents COVID-19 data reported directly to MDHHS by licensed and operating Skilled Nursing, Home for the Aged and Adult Foster Care facilities (licensed to serve 13 or more individuals) in Michigan from January 1, 2020, through October 4, 2022

---

## RSV

The Michigan Department of Health and Human Services (MDHHS) has released a [tip sheet for Respiratory Syncytial Virus \(RSV\)](#). Schools, daycares, and other childcare settings should refer to the tip sheet for RSV background information and general and setting-specific recommendations. With the recent increase in RSV cases, this information can be very helpful for families and individuals.

## BUSINESSES

---

### RSV

MDHHS has released a [tip sheet for Respiratory Syncytial Virus \(RSV\)](#). Long-term Care Facilities (LTCF), Healthcare Providers, and other businesses should refer to the tip sheet for RSV background information and general and setting-specific recommendations.

---

### COVID-19

On 11/30/22, the U.S. Food and Drug Administration announced that bebtelovimab is not currently authorized for emergency use in the U.S. for COVID-19 treatment because it is not expected to neutralize Omicron subvariants BQ.1 and BQ.1.1., according to data included in the [Health Care Provider Fact Sheet](#). For more information related to the therapeutic management of non-hospitalized patients with mild-to-moderate COVID-19, refer to the [NIH COVID-19 Treatment Guidelines](#) and [www.michigan.gov/covidtherapy](http://www.michigan.gov/covidtherapy).

## COMMUNICATIONS

COVID-19 Health Education has been a mandated service in this response. The following are metrics related to COVID communication efforts from 11/17/2022 – 12/1/2022:

- 5 Social media posts
- 5 Education materials created/updated
- 1 Community Update sent out
- 1 LTCF Update sent out

---

## MPOX NAME CHANGE

On November 28, the World Health Organization (WHO) officially recommended a new term “mpox” to replace the name monkeypox to reduce stigma and other issues associated with prior terminology. The two names will be used simultaneously for a year before monkeypox is completely phased out and replaced by mpox. ACHD is working to update our webpages and materials with the term mpox to align with [the recent World Health Organization decision](#) that is supported by the CDC and MDHHS.

For more mpox information and resources, click the links below.

- [www.cdc.gov/mpox](http://www.cdc.gov/mpox)
- [www.michigan.gov/mpox](http://www.michigan.gov/mpox)

---

## NATIONAL INFLUENZA VACCINATION WEEK & THE IMPORTANCE OF GETTING VACCINATED TO PREVENT SEVERE FLU ILLNESS

National Influenza Vaccination Week is your reminder that there’s still time to get a flu vaccine and protect yourself from serious flu illness. Each year flu vaccines are updated to better match the 4 flu viruses that research indicates will circulate during the season. Although it is ideal to get a flu vaccine before flu starts spreading in the community (usually around October), getting vaccinated later is beneficial anytime flu viruses are circulating. Getting vaccinated now can still provide protection against flu because flu activity is still elevated, and activity most commonly peaks in February and can continue into May.

Visit your doctor or local pharmacy to get your flu vaccine, and encourage your loved ones to get their flu vaccine to keep everyone safe and healthy during holiday gatherings.

- For vaccine locations visit [www.vaccines.gov](http://www.vaccines.gov)

---

## COMMUNITY TESTING EVENTS IN ALLEGAN AND HOW TO ORDER MORE AT-HOME TESTS



COMMUNITY TESTING

The Michigan Department of Health and Human Services (MDHHS) has moved their free weekly community pop-up COVID-19 testing to once a week at the Allegan County Transportation Building, located at 750 Airway Drive, Allegan. Free testing is now available every **Wednesday from 12 pm to 5 pm**. Free at-home test kits are also available for residents to pick-up at this location. Walk-ins are welcome, or you can register for testing at this location online [here](#).

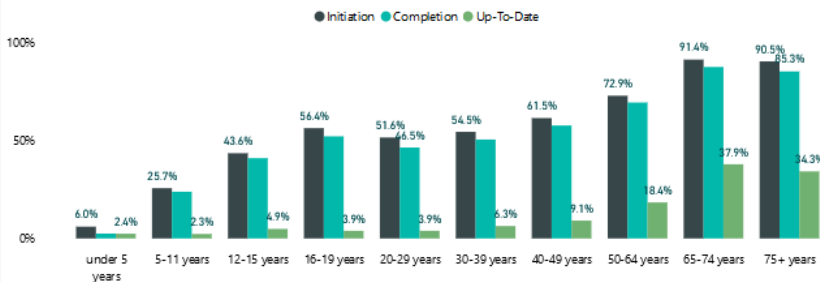
AT-HOME TESTS

Additional free COVID-19 test kits are available to order through Project Act for all households in Michigan. Orders may be placed each calendar month (beginning on the 1st of each month). If you already ordered tests from Project ACT last month, you can now request additional kits for your household. Each household will receive one kit containing five tests. Order online at [www.accesscovidtests.org](http://www.accesscovidtests.org) or call 211 for help ordering.

For more information and to view other testing locations near you, visit [www.michigan.gov/covidtest](http://www.michigan.gov/covidtest).

COMMUNITY VACCINATION/HERD IMMUNITY/TREATMENT

COVID Vaccine Coverage by Age Group



COVID-19 VACCINE COVERAGE

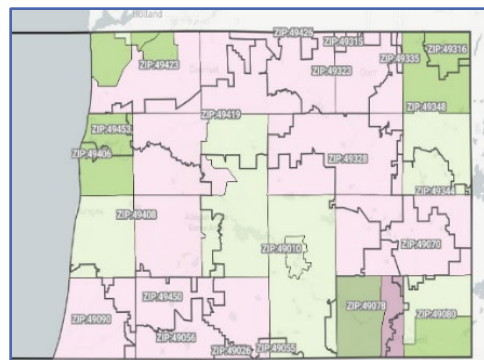
VACCINATION COVERAGE BY AGE GROUP

Data as of 12/3/2022

Explore the [MI Vaccine Dashboard](#) for the latest data. It is updated weekly on Wednesdays. The map on the left displays vaccine coverage for Allegan County. See Previous Reports for updates on Vaccine Coverage [here](#).

VACCINATION COVERAGE BY ZIP CODE

The map on the right shows the vaccination rates for residents aged 16 and older who received at least one dose of vaccine. The data is at the census tract<sup>11</sup>-level (colored sections) with an overlay of Allegan zip codes. Areas in the center of the county, with lower population counts, appear to have the lowest vaccination rates, while perimeter areas on the East and West sides of the county have higher vaccination rates overall. This data is based on a total population count of 115,250 as recorded in the 2018 US Census.



Legend

Map Color Coding: Received 1 or More Dose (% Ages 16+) ▾

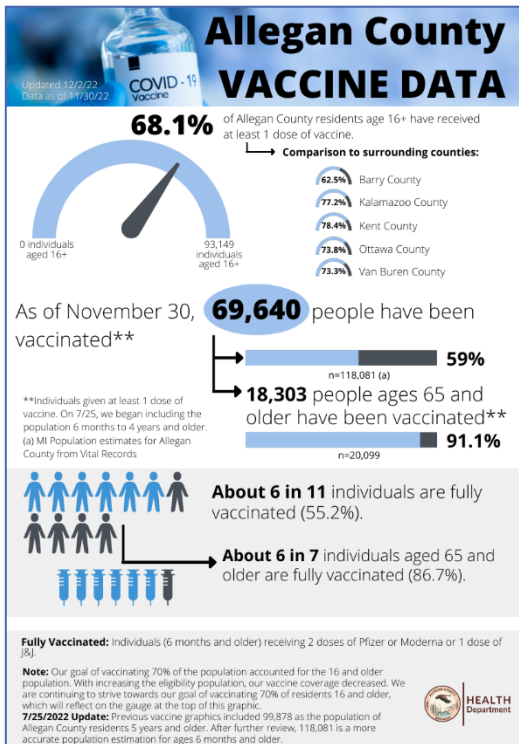
Zipcodes: Hide ZIP Codes

Received 1 or more doses of an approved COVID-19 vaccine

0-9%	10-19%	20-29%	30-39%	40-49%	50-59%	60-69%	70-79%	80-89%	>90%	<150 Population
------	--------	--------	--------	--------	--------	--------	--------	--------	------	-----------------

<sup>11</sup> Census tracts are geographic entities within counties with similar characteristics such as population traits, school enrollment, poverty level, median household income, housing vacancy, etc.





VACCINE AVAILABILITY

Residents are encouraged to visit [www.vaccines.gov](http://www.vaccines.gov) to find vaccination clinics near them, or call ACHD at 269-673-5411 to schedule an appointment.

VACCINE EFFECTIVENESS (VE)

Current [data](#) continues to show that COVID-19 vaccines are an **important layer in reducing the severity of illness, and the burden of hospitalizations and deaths in children, adolescents, and adults, even with the emergence of the predominant new Omicron variants** such as BA.4 and BA.5.

Being [up to date](#) on COVID-19 vaccines is crucial in reducing the burden of hospitalizations and deaths. Refer to further data from the CDC studies on nationwide COVID-19 VE Surveillance [here](#).

**BREAKTHROUGH SURVEILLANCE DATA:** For more information and the latest data on the rates of COVID-19 breakthrough cases, hospitalizations, and deaths, please refer to [CDC COVID Data Tracker: Rates of COVID-19 Cases and Deaths by Vaccination Status](#)

LOCAL HEALTH DEPARTMENT (LHD) BREAKTHROUGH DATA DISTRIBUTION

Refer to the [report from 6/21/22](#) for updates regarding breakthrough data distribution.

COVID-19 SURVEILLANCE			
7-DAY METRICS <sup>12</sup>	STATEWIDE (as of 11/29/22)	NATIONWIDE (as of 11/30/22)	GLOBAL (as of 12/4/22)
Cases	8,831	43,300	3.675M
Hospital Admissions	122	4,201	No data available
Deaths	113	254	10.144K
Percent Population Fully Vaccinated	65.6%	68.8%	No data available
Percent Positivity	10-14.9 %	10.7%	No data available

STATEWIDE (MICHIGAN)

- Find the latest [Michigan Coronavirus Data](#).
- Refer to the [November 1, 2022 MDHHS data and modeling](#) for current trends on cases, hospitalizations, and deaths associated with COVID-19.
- For more information and data on seasonal projections of cases, hospitalizations, and deaths, visit [COVID-19 Scenario Modeling Hub](#).

NATIONWIDE (UNITED STATES)

- Find the latest Nationwide data on [CDC's Cases and Data website](#).
- For more information refer to the [CDC COVID Data Tracker Weekly Review](#)

GLOBAL

- For additional information and the global pandemic data, refer to [WHO's weekly Epidemiological Situation Report](#)

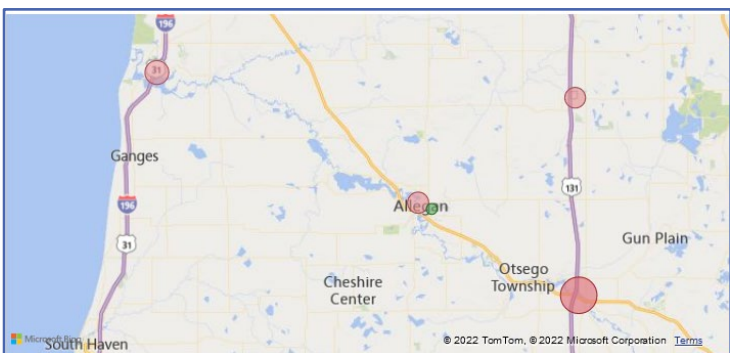
<sup>12</sup> Statewide and Nationwide data [COVID Data Tracker Weekly Review | CDC](#); Global data update as of 9/18/2022 [COVID-19 Map - Johns Hopkins Coronavirus Resource Center \(jhu.edu\)](#)

- For more information on currently circulating variants<sup>13</sup> (including VOIs, VUMs, and VOCs) and its classifications, visit [Tracking SARS-CoV-2 Variants](#)

## WASTEWATER SURVEILLANCE

See the most recent [MDHHS data and modeling update](#) for the Michigan SWEEP Sentinel Wastewater Summary.

Hope College has collaborated with ACHD to produce a dashboard, which displays the most recent wastewater readings and case counts.



2, 2022 (TPA<sup>15</sup>, TPP<sup>16</sup>, TPDS<sup>17</sup>), which have existing data points for the most recent nine calendar days (11/25/2022-12/1/2022). Read more about the [method of using wastewater surveillance data](#), to monitor case patterns at individual and population levels as it relates to the SARS-CoV-2 infection.

Allegan Sewershed Sites	Trend Dates	Current Trend Patterns
TPA	12/1/2022	Increasing
TPP	11/30/2022	Increasing
TPDS	11/29/2022	Decreasing

With this dashboard, ACHD has been able to forecast a rise in cases, which has improved mitigation responses.

**The table above shows three Allegan sewer shed sites that has the most current and accurate data readings.**

**The adjacent map shows current wastewater sewer shed sites that Hope College is monitoring in Allegan County.**

The colored circles<sup>14</sup> of differing sizes represent the concentration of COVID-19 in the wastewater as of December 2, 2022 (TPA<sup>15</sup>, TPP<sup>16</sup>, TPDS<sup>17</sup>), which have existing data points for the most recent nine calendar days (11/25/2022-12/1/2022).

## EMERGING VARIANT UPDATES

- See [CDC Nowcast Projections](#) (nationwide) for data estimations on the predominant Omicron sublineages and additional information on CDC's monitoring of nationwide variant proportions [here](#).
- See the most recent [MDHHS data and modeling update](#) for the latest variant information.
- ACHD continues to monitor all Omicron sub-lineages and deploy response measures accordingly.

## EPIDEMIOLOGIC SURVEILLANCE

### MPOX

For background information on mpox, refer to the [6/21/22 report](#).

**UPDATES:** Refer to the following links to view MDHHS and the CDC's MPV Situation Summary:

- [Michigan Case Counts](#)
- [2022 U.S. Map & Case Count](#)
- [2022 Monkeypox Outbreak Global Map](#)
- [State trends show an overall decrease of new cases by onset date of illness](#)

### HIGHLY PATHOGENIC AVIAN INFLUENZA (HPAI)

HPAI has been detected in 63 out of 83 counties in Michigan including Allegan County (1 confirmed case).

### RECENT EMERGING HEALTH THREATS: AT A QUICK GLANCE

<sup>13</sup> SARS-CoV-2 variants include variants of interest (VOI), variants under monitoring (VUM), and variants of concern (VOC)

<sup>14</sup> The areas with red circles seen on the map correlate with the increase in cases at LTCFs and other congregate care facilities during this reporting period

<sup>15</sup> Allegan Water Resource Recovery Facility

<sup>16</sup> Plainwell Wastewater Treatment Plant

<sup>17</sup> Douglas/Saugatuck Wastewater Treatment Plant

Data as of December 5, 2022

### Arboviruses

- **UPDATES:** [Michigan Weekly Arbovirus Summary November 4, 2022](#) and the Annual EZID Surveillance Summary for 2021 can be found [here](#).

### Rabies

- As of October 19, 2022, Rabies-positive animals in Michigan include **42 Bats** and **1 Skunk**. For positive animal counts by county, see this [map](#). There have been two bats in Allegan County that tested positive for rabies.

### Ebola

- On September 20, 2022, the Ugandan Ministry of Health confirmed an outbreak of Ebola virus disease (EVD) (Sudan virus) in western Uganda. There are no cases of Ebola in the U.S., and the risk of the virus remains low domestically. The U.S. announced it will screen air passengers from Uganda, and that flights from Uganda are being redirected to one of five U.S. airports (Chicago is the closest one to Allegan County).
- MDHHS will share information with the local health department on travelers from Uganda. Local health departments will conduct a risk assessment and share health education information including, signs and symptoms of Ebola, what to do if symptoms occur, and how to notify public health officials should symptoms appear. The monitoring period for travelers coming from Uganda is 21 days.
- Please see the Centers for Disease Control and Prevention Ebola website for the most current information. [www.cdc.gov/ebola](http://www.cdc.gov/ebola)

## SOURCES

- [Allegan County Health Department Facebook page](#)
- [Allegan County Transportation Building Testing Events](#)
- [Centers for Disease Control and Prevention](#)
- [CDC COVID-19 Booster Interactive Tool](#)
- [CDC COVID-19 Data Tracker](#)
- [CDC Current Outbreak List | CDC](#)
- [CDC Flu](#)
- [CDC Health Alert Network](#)
- [CDC Mpox](#)
- [CDC Provisional COVID-19 Deaths: Focus on Ages 0-18 Years](#)
- [Find a COVID-19 Vaccine Near You](#)
- [Health Care Provider Fact Sheet](#)
- [Infection Control: Severe acute respiratory syndrome coronavirus 2 \(SARS-CoV-2\)](#)
- [Interim Guidance for Managing Healthcare Personnel with SARS-CoV-2 Infection or Exposure to SARS-CoV-2 | CDC](#)
- [Lighthouse \(mi-lighthouse.org\)](#)
- [Long Term Care Data](#)
- [MDHHS Mpox Page](#)
- [MDHHS Testing Page](#)
- [MDHHS RSV Tip Sheet](#)
- [MDHHS School Outbreak Reporting](#)
- [MDHHS: School Age Case Data Dashboard](#)
- [MI Bridges](#)
- [MI COVID response Data and Modeling](#)
- [MI Weekly Arbovirus Summary, 2022 \(michigan.gov\)](#)
- [Michigan Coronavirus: COVID-19 Vaccine](#)
- [Michigan COVID-19 Wastewater Testing and SWEEP Dashboard](#)
- [Michigan Coronavirus Data](#)
- [Michigan Department of Health and Human Services \(MDHHS\) Breakthrough Cases Data File](#)
- [Michigan Disease Surveillance System \(MDSS\)](#)
- [CDC Stay Up-to-date on Vaccinations](#)
- [COVID-19 Bivalent Vaccine Boosters FDA page](#)
- [COVID Data Tracker Weekly Review](#)
- [COVID-19 Vaccine Dashboard](#)
- [COVID-19, Cold, Allergies, and Flu Difference](#)
- [CHN Associates, Student, and Family Assistance Program Monthly Report](#)
- [Division of Vector-Borne Diseases \(DVBD\) | Division of Vector-Borne Diseases | NCEZID | CDC](#)
- [Ebola Disease caused by Sudan virus – Uganda \(who.int\)](#)
- [Michigan DNR Eyes in the Field](#)
- [NIH COVID-19 Treatment Guidelines](#)
- [Michigan Health Alert Network \(MIHAN\)](#)
- [MHA: RSV Awareness](#)
- [MI Safe Start Map and CDC Indicators](#)
- [New COVID-19 Cases Worldwide - Johns Hopkins Coronavirus Resource Center \(jhu.edu\)](#)
- [Office of International Health and Biodefense - United States Department of State](#)
- [Our World in Data - Coronavirus \(COVID-19\) Hospitalizations](#)
- [Project Act Test Kits](#)
- [Sewer Coronavirus Alert Network \(SCAN\) \(wastewaterscan.org\)](#)
- [US Food and Drug Administration](#)
- [WHO mpox name change](#)
- [World Health Organization Coronavirus Dashboard](#)
- <https://www.who.int/emergencies/diseases/novel-coronavirus-who> Coronavirus disease (COVID-19) Weekly Epidemiological Update and Weekly Operational Update2019/situation-reports

## Allegan County COVID-19 Community Level: Low

Allegan County Health Department  
recommends everyone to:



**Stay up to date with  
COVID-19 vaccines**



**Get tested if you  
have symptoms**

People may choose to mask at any time. People with symptoms, a positive test, or exposure to someone with COVID-19 should wear a mask.

Learn more about CDC's COVID-19  
Community Levels at: [bit.ly/3P4n6SX](https://bit.ly/3P4n6SX)



HEALTH  
Department

## Allegan County COVID-19 Community Level: Low

### Stay up-to-date on COVID-19 vaccines and boosters:

- Find vaccine clinics near you at [vaccines.gov](https://vaccines.gov)
- Or call ACHD at 269-673-5411 to schedule an appointment

### Get Tested for COVID-19:

- Wednesdays at the Allegan County Transportation Building (750 Airway Dr, Allegan) from 12 pm - 5 pm
- Order free test kits online at: [accesscovidtests.org](https://accesscovidtests.org)
- Pick-up tests locally:
  - visit [allegancounty.org/covid](https://allegancounty.org/covid) to view locations
- Find other testing options and sites near you at: [michigan.gov/covidtest](https://michigan.gov/covidtest)

Follow CDC's isolation guidelines and stay home if you develop symptoms or test positive.



HEALTH  
Department

# Mpox: What to Know



## How it spreads:

- Direct contact with the infectious rash, scabs, or body fluids
- Respiratory secretions during prolonged, face-to-face contact, or during intimate physical contact, such as kissing, cuddling, or sex
- Touching items (such as clothing or linens) that previously touched the infectious rash or body fluids
- Pregnant people can spread the virus to their fetus through the placenta

The illness typically lasts 2-4 weeks. People who do not have mpox symptoms cannot spread the virus to others.



## Symptoms:

- Fever
- Headache
- Muscle aches and backaches
- Chills
- Exhaustion
- Swollen lymph nodes
- A rash that can look like pimples or blisters

## Prevention:

- Avoid close, skin-to-skin contact with people who have a rash that looks like mpox.
- Do not touch the rash or scabs of a person with mpox.
- Do not kiss, hug, cuddle or have sex with someone with mpox.



- Do not share eating utensils or cups with a person with mpox.
- Do not handle or touch the bedding, towels, or clothing of a person with mpox.
- Wash your hands often with soap and water or use an alcohol-based hand sanitizer

If you feel sick or have symptoms, do not attend any gathering, and contact your healthcare provider. For more information visit [www.cdc.gov/mpox](http://www.cdc.gov/mpox).