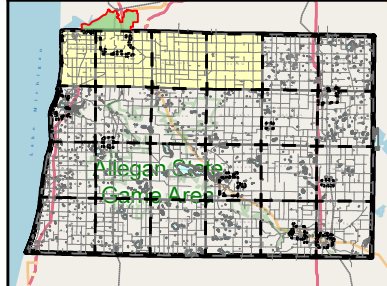


**Legend**

- City/Village Bounds
- County Bounds
- Townships
- District No.1

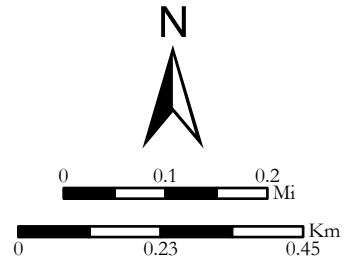


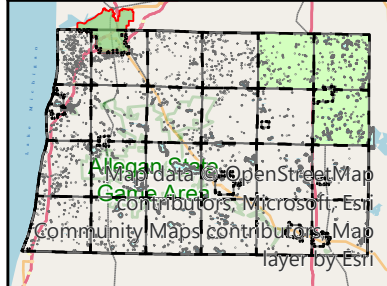
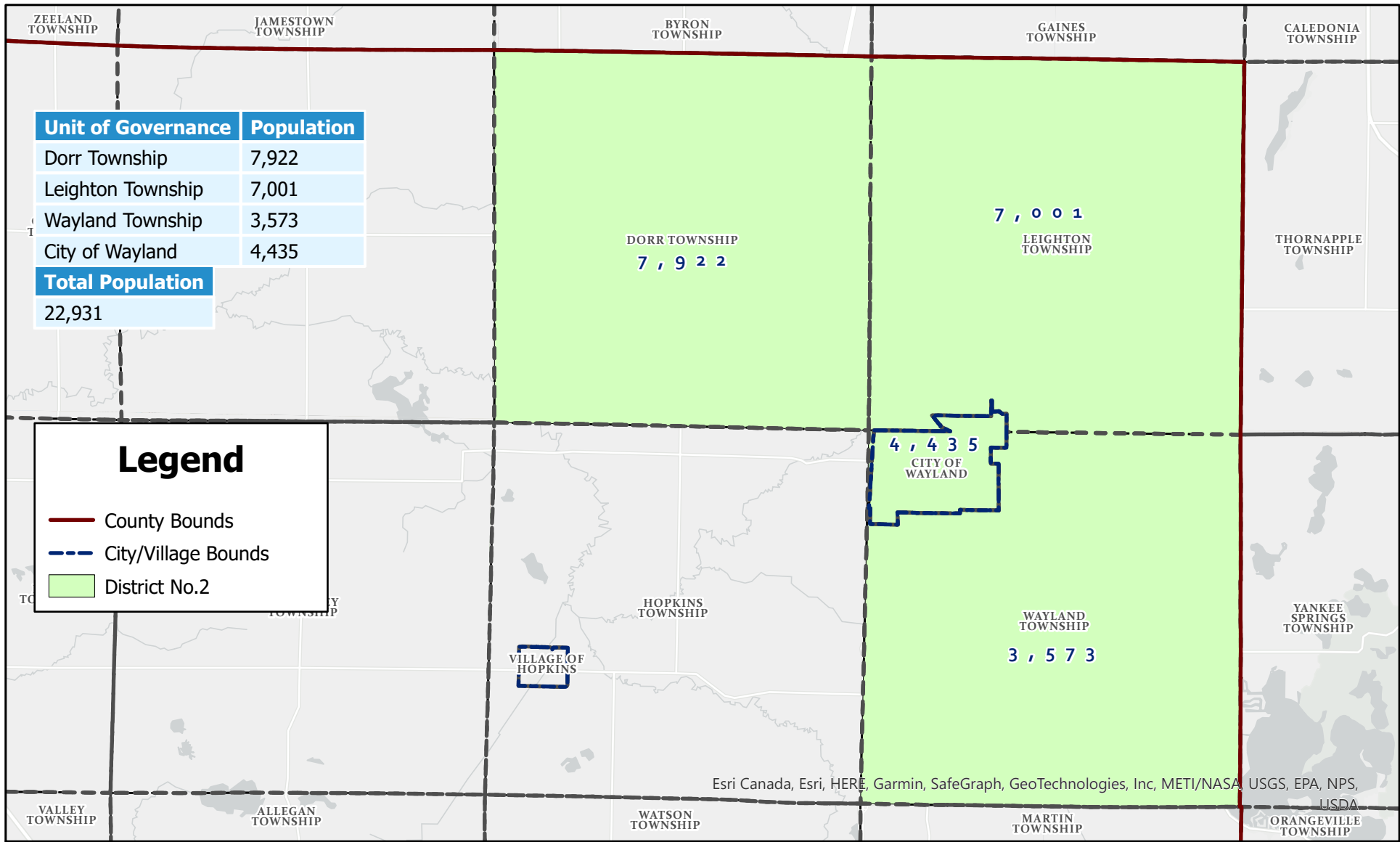
# District No.1

2022

2022 Allegan County Commissioner District Maps created April 15th, 2022 by Allegan County GIS Services. Base maps taken from the 2009-2019 Official Allegan County Road Map produced by the Allegan County GIS Services Department and issued by the Allegan County Road Commission and the County of Allegan.

Allegan County GIS Services assumes no liability for results or conclusions drawn from the use of these data.



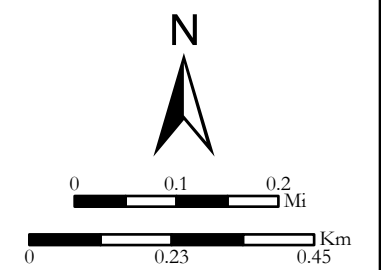


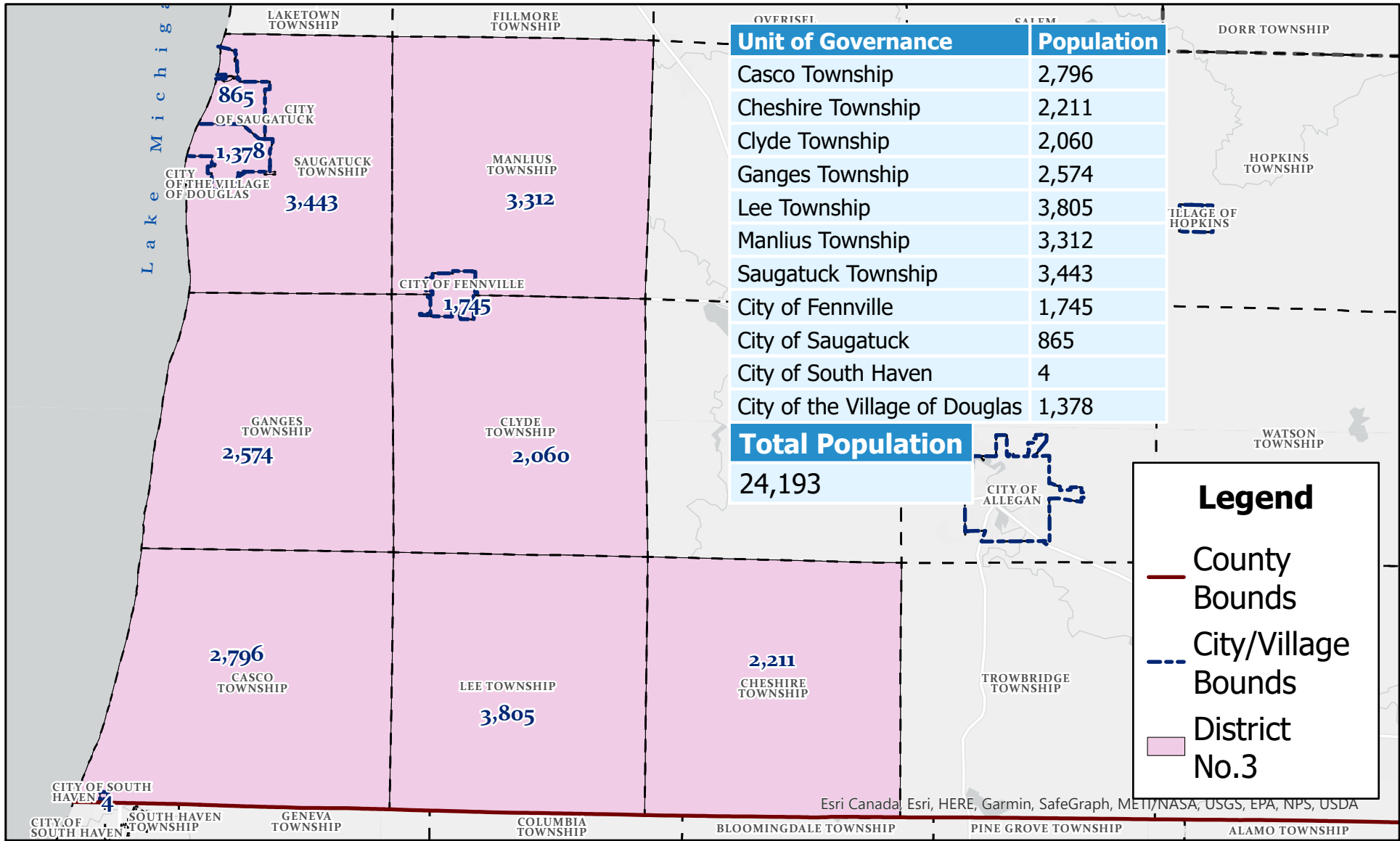
# District No. 2

## 2022

2022 Allegan County Commissioner District Maps created April 25th, 2022 by Allegan County GIS Services. Base maps taken from the 2009-2019 Official Allegan County Road Map produced by the Allegan County GIS Services Department and issued by the Allegan County Road Commission and the County of Allegan.

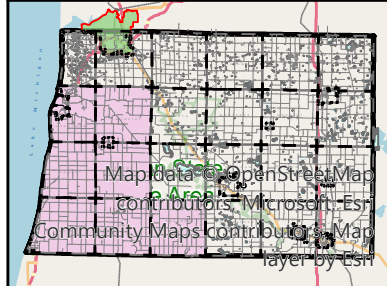
Allegan County GIS Services assumes no liability for results or conclusions drawn from the use of these data.





**Legend**

- County Bounds
- City/Village Bounds
- District No.3

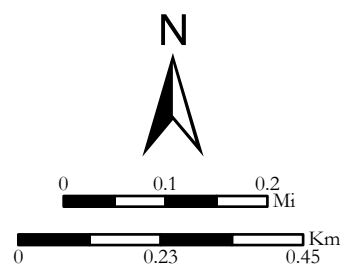


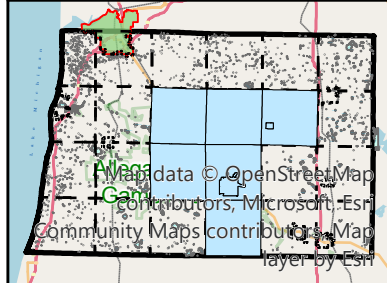
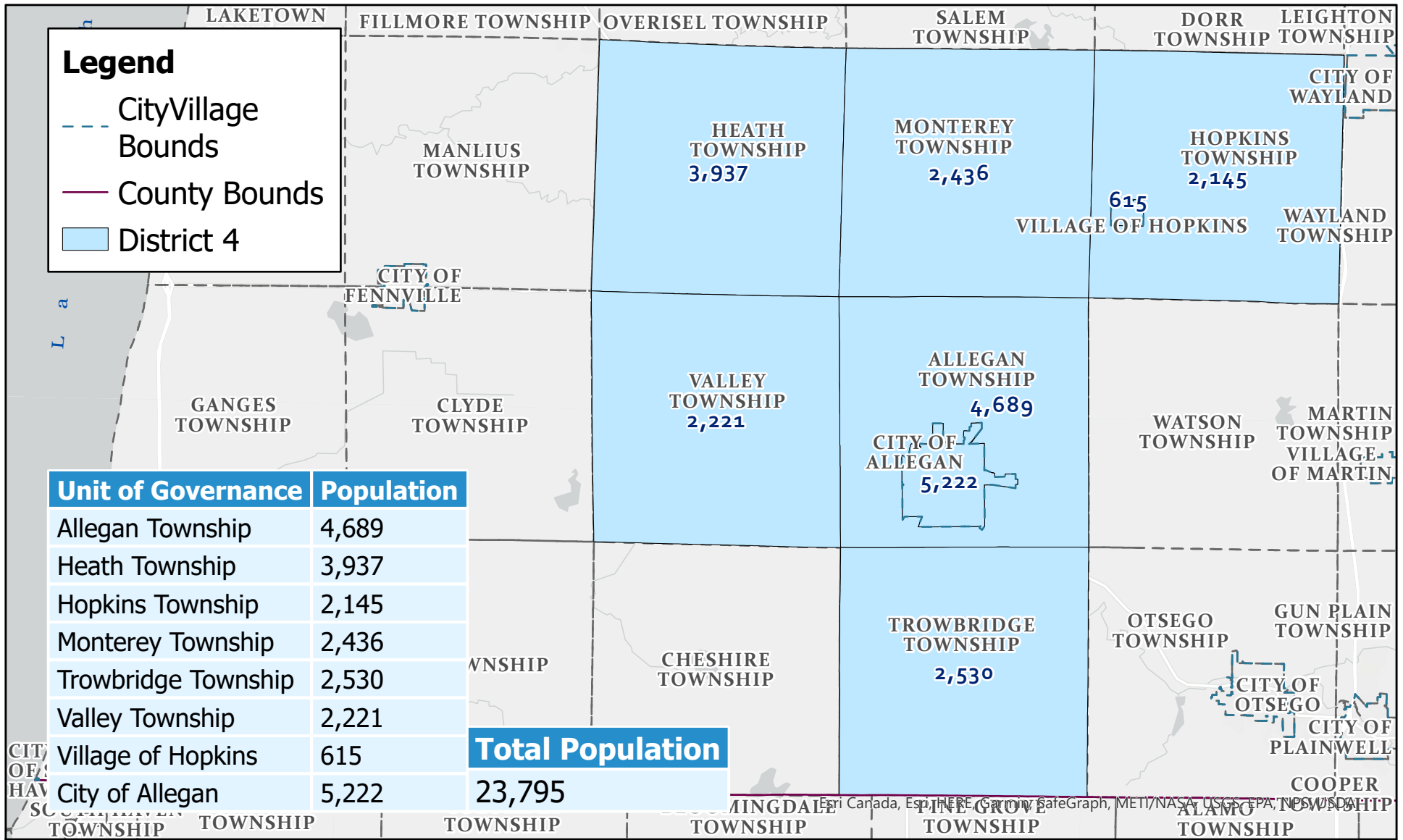
# District No.3

2022

2022 Allegan County Commissioner District Maps created March April 25th, 2022 by Allegan County GIS Services. Base maps taken from the 2009-2019 Official Allegan County Road Map produced by the Allegan County GIS Services Department and issued by the Allegan County Road Commission and the County of Allegan.

Allegan County GIS Services assumes no liability for results or conclusions drawn from the use of these data.





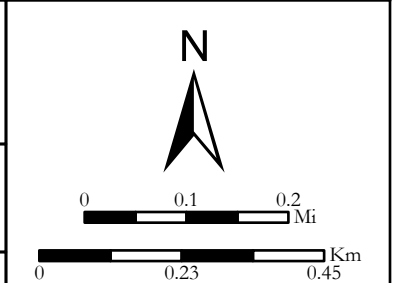



# District No.4

2022 Allegan County Commissioner District Maps created April 25th, 2022 by Allegan County GIS Services. Base maps taken from the 2009-2019 Official Allegan County Road Map produced by the Allegan County GIS Services Department and issued by the Allegan County Road Commission and the County of Allegan.

**2022**

Allegan County GIS Services assumes no liability for results or conclusions drawn from the use of these data.






Unit of Governance	Population
--------------------	------------

Martin Township	2,346
Otsego Township	5,903
Village of Martin	377
City of Otsego	4,120
City of Plainwell	3,788
Gun Plain Township	6,148
Watson Township	2,176

Total
-------

24,858
--------

### Legend

-  County Bounds
-  City/Village Bounds
-  District No.5

2,176  
WATSON  
TOWNSHIP

2,346  
MARTIN  
TOWNSHIP

VILLAGE OF MARTIN  
377

5,903  
OTSEGO  
TOWNSHIP

4,120  
CITY OF  
OTSEGO

6,148  
GUN PLAIN  
TOWNSHIP

CITY OF  
PLAINWELL  
3,788

Esri Canada, Esri, HERE, Garmin, SafeGraph, GeoTechnologies, Inc, METI/NASA, USGS, EPA, NPS, USDA

# District No.5

## 2022



2022 Allegan County Commissioner District Maps created April 15th, 2022 by Allegan County GIS Services. Base maps taken from the 2009-2019 Official Allegan County Road Map produced by the Allegan County GIS Services Department and issued by the Allegan County Road Commission and the County of Allegan.

Allegan County GIS Services assumes no liability for results or conclusions drawn from the use of these data.

