

**United
Way**



**United Way of Ottawa
and Allegan Counties**

HOUSING SERVICES



01	TABLE OF CONTENTS
02	CONTACTS
03	ONPOINT
05	SYLVIA'S PLACE
10	COMMUNITY ACTION OF ALLEGAN COUNTY
16	CATHOLIC CHARITIES DIOCESE OF KALAMAZOO - ARK YOUTH SHELTER
21	LOVE IN THE NAME OF CHRIST (INC)
27	CHRISTIAN NEIGHBORS SE
28	LAKESHORE HABITAT FOR HUMANITY
29	ALLEGAN COUNTY LOCAL PLANNING BODY (LPB) AGENCY LIST



CONTACTS

SUSAN CONRAD

HOUSING SERVICES SUPERVISOR
ONPOINT
SCONRAD@ONPOINTALLEGAN.ORG

KRISTA BOSMA

CASE MANAGER
SYLVIA'S PLACE
KRISTAB@SYLVIASPLACE.COM

LISA E VANS

EXECUTIVE DIRECTOR
COMMUNITY ACTION OF ALLEGAN COUNTY
LEVANS@COMMUNITYACTIONALLEGAN.ORG

DARRELL OAKLEY

DEPUTY DIRECTOR HOUSING & COMMUNITY
SERVICES
COMMUNITY ACTION OF ALLEGAN COUNTY
DOAKLEY@COMMUNITYACTIONALLEGAN.ORG

TONI NEWELL

EXECUTIVE DIRECTOR
CATHOLIC CHARITIES DIOCESE OF
KALAMAZOO – ARK YOUTH SHELTER
TONINEWELL@CCDOK.ORG

JEAN EDING

LIFE SKILLS/HOMES OF HOPE DIRECTOR
LOVE IN THE NAME OF CHRIST (INC)
JEAN@LOVEINCNWA.ORG

KIM SHAFER

HOUSING PROGRAM DIRECTOR
CHRISTIAN NEIGHBORS SE
KSHAFER@CHRISTIANNEIGHBORS.ORG

THERESA BRAY

CO-FOUNDER & BOARD PRESIDENT
ALLEGAN HOMELESS SOLUTIONS
TMBRAY007@YAHOO.COM

DON WILKINSON

EXECUTIVE DIRECTOR
LAKESHORE HABITAT FOR HUMANITY
DON.W@LAKESHOREHABITAT.ORG



United Way of Ottawa
and Allegan Counties



ALLEGAN COUNTY HOUSING ASSESSMENT AND RESOURCE AGENCY (HARA) QUICK REFERENCE SHEET

To reach the HARA and Homeless Assistance Program

- Call 269-686-4703. Please let folks know if they need to leave a message:
 - Provide a good contact number and the best time(s) to call back
 - The number on their caller ID likely will not be the HAP number when we call back

OR

- Send an email to housing@onpointallegan.org

Let's talk about homeless definitions, which govern eligibility for HUD and MSHDA programs

- **LEVEL 1** – Has a primary nighttime residence that is a public or private place not meant for human habitation; **or** Is living in a publicly or privately operated shelter designated to provide temporary living arrangements (including congregate shelters, transitional housing, and hotels and motels paid for by charitable organizations or by federal, state and local government programs); **or** Is exiting an institution where (s)he has resided for 90 days or less and who resided in an emergency shelter or place not meant for human habitation immediately before entering that institution.
- **LEVEL 2** – Residence will be lost within 14 days of the date of application for homeless assistance, no subsequent residence has been identified; *and* the individual or family lacks the resources or support networks needed to obtain other permanent housing.

Clients must be in one of these two situations to qualify for the programs offered by the HARA, and HARA staff must be able to verify the client's situation.

SAFE AND TEMPORARY SHELTER FOR LEVEL 1 INDIVIDUALS

SHELTER	PRIMARY SERVICE AREA	POPULATIONS SERVED	Contact phone:
Holland Rescue Mission	Ottawa but will serve Allegan County residents	Adult males	616-928-3413
Family Hope Center	Ottawa but will serve Allegan County residents	Adult women and families	616-928-3469

Sylvia's Place	Allegan	DV survivors	269-673-8700
Resilience	Ottawa and Allegan	DV survivors	1-800-848-5991
Open Door	Kalamazoo but will serve Allegan County residents	men	269-345-1431
The Next Door	Kalamazoo but will serve Allegan County residents	women	269-345-1431
Kalamazoo Gospel Mission	Kalamazoo but will serve Allegan County residents	families	269-345-2974
Mel Trotter	Located in Kent but serve all	Adults	616-454-8249
Family Promise	Located in Kent but serve all	Families	616-475-5220
Degage	Located in Kent but serve all	Women and children	616-454-1661
The Deborah House	Located in Kent but serve all	Pregnant Women and women with young children	616-452-6330
The Ark	Located in Kalamazoo but serve all	Youth 10-17	269-381-9800
The Bridge	Located in Kent but serve all	Youth 10-17	616-451-3001

SYLVIA'S PLACE



Sylvia's Place is Allegan County's only domestic violence safe house.

Our mission is to create and to sustain a safe environment that empowers women and children through our services, preventative education, and advocacy.

Non-Residential Services

- Legal advocacy
- Personal protection orders
- Court accompaniment
- Housing referrals
- Crime victims compensation
- Domestic violence education
- Counseling
- Victim support

Residential Services

- Safe shelter
- 24/7 crisis line
- Safety planning
- Food, clothing, and hygiene products
- Individual case management
- Individual and family counseling
- Housing referrals
- Employment search

Contact Us

(269) 673-8700

www.sylviasplace.com

P.O. Box 13 | Allegan, MI | 49010

1 IN 4 WOMEN

1 IN 7 MEN



HAVE BEEN BEATEN, BURNED, STRANGLERD OR EXPERIENCED SOME OTHER FORM OF EXTREME PHYSICAL ABUSE BY A SIGNIFICANT OTHER.

Further Stats (NCADV)

- More than 10 million people each year are physically abused by their romantic partners
- One in ten women have been raped by their significant other
- About one in fifteen children witness domestic abuse
- Over 20,000 calls are made to crisis lines across the country per day

SIGNS OF ABUSE

Physical

- Beating
- Slapping
- Scratching
- Burning
- Pinching
- Strangling
- Throwing things
- Withholding food or other basics

Emotional

- Isolation
- Name-calling
- Gaslighting
- Other manipulative tactics

Economic

- Controlling the other's finances
- Forbidding or forcing someone to get a job
- Withholding driver's license or other important documents
- Forbidding the use of their own car

Sexual

- Any unwanted or coerced sexual contact
- Posting intimate photos online
- Forbidding or sabotaging use of birth control



SYLVIA'S PLACE



THE MIDNIGHT RUN

One cold evening, Megan* (alias used to protect her identity) raced down the road, frequently looking over her shoulder. She wore a thin hoody, thrown on inside out. She was desperate; desperate to get away from him. It was only a short time before that he beat and raped her. She didn't know how far behind he was, but Megan knew that he would follow her. Her abuser had lost control of her and he was frantic to regain that power.

Then, up ahead on the right, she saw her neighbor's house - she was almost there. Moments later, Megan was inside; she was safe. A short time afterward, Megan found Sylvia's Place. Now, with steady employment, a car, and a place of her own, she is free from her abuser.

THIS IS WHY WE'RE HERE

Everyone deserves to have a safe place.

Since 1996, we have provided over **74, 220** bednights to survivors of domestic violence; in addition to shelter, we assist them with getting reliable transportation, employment, permanent housing, personal protection orders, counseling, and basic necessities like food and toiletries. With your support we can continue to serve families needing safety from abuse, and give them the tools they need to get a new start in life.

WHAT YOUR DONATION PROVIDES:

\$25 - Milk for a Week
\$40 - Counseling Session
\$50 - Protection Orders
\$100 - Family Counseling
\$300 - 100 Resource Packets

OVER 10 MILLION
PEOPLE ARE ABUSED
BY A ROMANTIC
PARTNER EVERY YEAR

NCADV



MORE ABOUT OUR SERVICES

Residential

We offer a free 30-day residential program for female survivors of domestic violence and their children. This involves utilizing the tools and resources offered to help them become independent again. Our services include:

- Safe and secure shelter
- Food, toiletries, and other basic necessities while at shelter
- Personalized case management
- Counseling
- Assistance with finding employment, housing, and transportation
- Assistance with obtaining any necessary legal identification documents

Nonresidential

For male or female survivors who do not need immediate shelter but are still in need of services, we offer:

- Assistance with personal protection orders
- Bond assessments
- Housing referrals
- Counseling

HOW YOU CAN HELP

Sign Up to Partner with Us or Make a Donation

Become a monthly sponsor to support services for our clients, and receive a kit with your choice of shirt and other items as a special thank-you. Learn more at: <https://sylviasplace.com/monthlypartner>. You can also make a one-time financial contribution at: <https://sylviasplace.com/take-action/donate>.

Volunteer

Make a tangible difference in the lives of survivors through a variety of projects suited to your talents. Opportunities include fundraising, outreach, meal prep, library attendant, marketing, yard work, and maintenance. Apply at: <https://sylviasplace.com/volunteer>.

Support Shelter Needs

Our Walmart and Amazon needs lists are full of items our facilities need and use on a regular basis. You can view our current needs here: <https://sylviasplace.com/wishlist>.

Attend Upcoming Events

Follow us on Facebook [@SylviasPlaceMI](#) to stay up to date on current and upcoming events!



Build Skills. Construct The Future.



HOUSING WORKS COMMUNITY DEVELOPMENT PROGRAM

Provided by Community Action of Allegan County, the Housing Workx program is supported by a Stakeholder network of over 70 individuals, organizations, and businesses at a local, regional and national level.

Home Builders Institute's
Pre-Apprenticeship Certificate Training (PACT)

- 75% of training time is spent with hands on project-based learning
- 10-week training session
- Department of Labor recognized, nationally portable pre-apprenticeship credential

Students Learn Core Construction skills

- 1 Personal Protective Equipment
- 2 Hand Tools
- 3 Power Tools
- 4 Basic Measurement to 1/16th of an inch
- 5 Basic Carpentry
- 6 Occupational Safety & Health Administration (OSHA) 10-hour Training

AFFORDABLE

OPPORTUNITIES FOR FINANCIAL ASSISTANCE from MiWorks!, scholarships and other financial assistance programs.

TUITION INCLUDES ALL PROGRAM MATERIALS:

- o All books and testing materials
- o Personal Protective Equipment
- o Tool Belt
- o Basic Hand Tools

JOB SKILLS TRAINING

OPPORTUNITIES FOR CONTINUING EDUCATION

TRAINING PROVIDED FOR SUCCESSFUL JOB ATTAINMENT:

- o Resume Writing
- o Professional Communication

JOB PLACEMENT

PLACEMENT WITH INDUSTRY PROFESSIONALS AND LEADERS:

- o Traditional and Non-Traditional Construction Industry Employment
- o Entry level wages starting at \$15.80 an hour and above
- o Multiple industries have worker shortages awaiting candidates

Housing Works affects change in the housing and building industry by delivering Department of Labor recognized PACT developed by the Home Builders Institute. This education is a component of an overall solution created by Community Action of Allegan County to holistically address the needs of employees and employers in promoting the residential building industry.

Interested in learning more?

Contact the housing department at Community Action of Allegan County at (269) 673-5472



WEATHERIZATION WORKS FOR ALLEGAN COUNTY!

CAAC DELIVERS SERVICES TO OVER 50 HOMES EACH YEAR.

These energy-efficiency improvements have resulted in annual average energy savings of \$347 per household.

CAAC partners with local builders and HVAC contractors to deliver energy-efficiency services to low-income households.

Low-income households carry a larger burden for energy costs, typically spending 16.3% of their total annual income versus 3.5% for other households.

The Weatherization Assistance Program has created an industry, producing new jobs and technologies, all while helping the most vulnerable families in America.

"Before weatherization, I had to close all the rooms in my house and live out of one room during the winter. Despite this, my kids were freezing, and I couldn't afford my utility bills. After weatherization, my home is toasty warm, and I can pay my utility bills again."

WEATHERIZATION REDUCES ENERGY COSTS FOR LOW-INCOME FAMILIES BY IMPROVING THE EFFICIENCY OF THEIR HOMES.

By lowering energy bills for low-income families, weatherization increases their self-sufficiency.

Weatherization prioritizes services to the elderly, persons with disabilities and families with children.

Weatherization measures are delivered to single-family homes, multi-family dwellings and mobile homes.

Weatherization measures reduce average annual energy costs by \$347 per home.

WEATHERIZATION TAKES HEALTH AND SAFETY MEASURES THAT CREATE HEALTH BENEFITS

Install smoke and carbon monoxide detectors.

Test/repair/replace HVAC systems to ensure combustion gas exits the home safely.

Install mechanical ventilation to ensure indoor air quality and control moisture.

Perform incidental safety repairs when needed.

PROGRAM OPERATION

The U.S. Department of Energy (DOE) partners with state-level agencies in all 50 states, the District of Columbia and among Native American tribes to implement the Weatherization Assistance Program.

DOE's Project Management Center awards grants to state-level agencies, which then contract with local agencies to deliver weatherization services to eligible residents in every county in the nation.

State and local agencies leverage DOE funding with state, utility and other resources to weatherize more homes.

More than six million homes have been weatherized since the inception of the Weatherization Assistance Program.



323 Water Street, Allegan, MI
269.673.5472 ext. 238
communityactionallegan.org
wx@communityactionallegan.org

WEATHERIZATION ASSISTANCE PROGRAM

Delivering energy-efficiency services to low-income households



WEATHERIZATION AGENCIES INSTALL COST-EFFECTIVE MEASURES TO REDUCE HOME ENERGY CONSUMPTION.

Weatherization technicians use energy audits to determine which energy-efficiency measures are most appropriate and cost-effective for each home.

Typical measures include installing insulation, reducing air infiltration, performing tuneups and repairs to heating and cooling systems, replacing appliances to improve efficiency and safety, and replacing incandescent lighting with LED lightbulbs.

WEATHERIZATION PRODUCES IMPORTANT BENEFITS FOR OUR COMMUNITY.

Creates jobs for energy professionals and private contractors.

Educates consumers about energy-efficiency practices.

Decreases energy demand, thereby reducing power plant emissions.

Creates an empowered community and reduces the nation's dependence on imported oil.

Weatherization returns \$1.65 in energy-related benefits for every \$1 invested in the program.

WEATHERIZATION SOCIETAL BENEFITS



HOMES ARE MORE LIVABLE



FEWER MISSED DAYS OF WORK



MORE INCOME FOR EXPENSES



REDUCED ASTHMA MEDICAL COSTS
IMPROVED OVERALL HEALTH

\$14,148

IS THE AVERAGE TOTAL HEALTH-RELATED SAVINGS FOR EACH WEATHERIZATION UNIT





HOUSING WORKX!

Program of Community Action of Allegan County

Build Your Business.

Construct the Future.

Housing Workx!

FACT SHEET

Need.

From 2009 to 2019, Michigan lost 48% of its skilled trades workforce. The Housing Workx! addresses the entry level skills needed to begin a career in construction.

Recruit.

By engaging high school students and adult learners Housing Workx! raises awareness of career opportunities in the construction industry.

Train.

Housing Workx! provides hands on learning in general labor, carpentry, weatherization, property maintenance, plumbing, masonry, electrical, landscaping, and painting.

Employ.

Housing Workx! finds you talented and trained individuals and provides employer supports; allowing you to focus on growing your business.

Build.

Be Community Action. Build your business. And together we can construct the future.

The Housing Workx! Program affects change in the housing and building industry by delivering Department of Labor recognized Pre-Apprenticeship Certified Training (PACT) developed by the Home Builders Institute (HBI). This education is a component of an overall solution created by Community Action of Allegan County to wholistically address the needs of employees and employers in promoting the residential building industry.

Interested in learning more?

Contact the Housing Dept. at Community Action of Allegan County at (269) 673-5472 x238. communityactionallegan.org



Michigan's *First* Statewide Housing Plan

The Vision: Michigan's successful housing ecosystem provides safe, healthy, affordable, and attainable housing for all in a community of their choice.

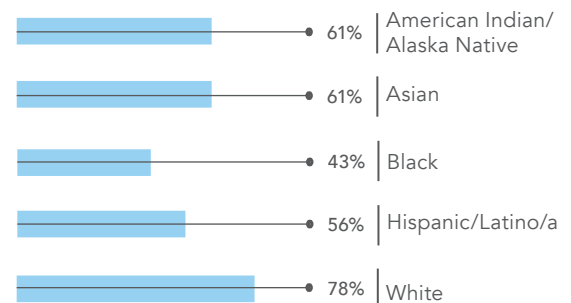
Michigan's housing market faces numerous longstanding inequities that make it difficult for all residents to obtain safe, healthy, affordable, and attainable housing. The COVID-19 pandemic amplified existing disparities in housing access as well as other indicators of health and quality of life. These disparities exist along geographic (urban, suburban, and rural) and social (race/ethnicity, age, income) dimensions throughout the state. To address these complex, interacting challenges in a coordinated manner that engages all stakeholders in the housing sector, our state needed a plan: Michigan's first statewide housing plan.

- Across Michigan, 1.5 million, or 38 percent of households struggle to afford the basic necessities of housing, child care, food, technology, health care and transportation.
- Homeownership and homelessness show significant disparities along racial lines. In 2019, 78% of Whites (non-Hispanic/Latino/a) owned their homes, compared to 43% of Blacks and 56% of Hispanic/Latinos/a, 61% of Asians, and 61% of American Indians/Alaska Natives. Among the state's homeless population, 52% are Black, despite being only 14% of Michigan's overall population.
- Housing affordability is a major barrier in Michigan. Before the pandemic, 48% of Michigan renters and 18% of homeowners paid too much for housing (over 30% of their income). This situation worsened after the pandemic.
- Between January 2013 and October 2021, the average sales price for a home in Michigan increased by 84%. During that same period, the asking rent for a Michigan apartment increased in price by 20%, with the highest increases registered in mid-market properties most likely to contain affordable units.
- Many users of Housing Choice Vouchers find that locating rental units where they can use their subsidy is very challenging. This is due to a relative lack of quality units for rent and a shortage of landlords who wish to participate in the program.
- According to U.S. Census Bureau research, throughout most of the pandemic, about 239,000 Michigan residents reported little or no confidence that they could make their rent or mortgage payments on time. About half of this group indicated that an eviction was very or somewhat likely.
- Michigan's housing stock is aging; 47% of all housing units in the state were built prior to 1970.
- Construction of new units is occurring at a much slower pace than normal. The average number of building permits is less than half of the state's pre-Great Recession levels.

38%

of households struggle to afford the basic necessities of housing, child care, food, technology, health care and transportation.

Homeownership Rates



84%

Between January 2013 and October 2021, the average sales price for a home in Michigan increased by 84%.

47%

of all housing units in the state were built prior to 1970.

Strategic Direction

To address the issues above, Michigan needs to increase the supply of safe, healthy, affordable, and attainable housing while improving equity and racial justice throughout the housing sector.

To rectify longstanding historical patterns of racial discrimination and segregation in housing access, a strong and intentional focus on equity and racial justice is interwoven throughout the plan. The plan is human-centered, putting people at the core of its goals and strategies. It also recognizes housing as a social determinant of health and a key component of communities. Finally, the plan prioritizes the inclusion of many voices, especially those with lived expertise, in its development and implementation.

This work is too large and complex to be solved by one agency alone. A coordinated, data-driven and outcome-oriented effort by stakeholders across the housing sector is needed. This is the purpose of Michigan's first Statewide Housing Plan. By working in a coordinated fashion on the goals in the plan, housing partners can make more headway than they might independently.

One of the key tasks of the Statewide Housing Plan will be to strategically coordinate and leverage housing investment from a variety of sources, including federal and other funding sources. Governor Gretchen Whitmer has committed to supply the state with 75,000 new housing units in the next five years through a combination of public and private resources; the Statewide Housing Plan will provide guidance on how to carry out this commitment to maximum effect throughout the state.

The Michigan State Housing Development Authority (MSHDA), Michigan's state housing finance authority (HFA), launched and funded the process to develop the plan. Research and facilitation services are being provided by Public Policy Associates (PPA), a research and consulting firm.

Plan Development Process and Timeline

To ensure that the Statewide Housing Plan reflected the needs of all Michiganders—especially those who have historically been excluded from opportunities for safe and stable housing—it was essential that the planning process be grounded in research, with strong engagement from a wide variety of organizations and Michigan residents. Significant time and effort were required to ensure that equity and racial justice were appropriately addressed, that the voices of people with lived expertise were included, that no important inputs were missed, and that the plan included current knowledge of housing efforts in Michigan and across the country.

The process has included the following activities:

- A review of literature about national housing trends and innovations, as well as state and regional reports and plans, to provide insights for housing in Michigan.
- A review of 16 HFAs to increase understanding of how well Michigan is reflecting national trends and best practices, including interviewing leadership from those HFAs.
- Interviews with national housing experts.
- Meetings of a State Agency Group and a Partner Advisory Council (of stakeholder organizations) to help develop and refine plan elements.
- Interviews and focus groups with individuals with diverse lived experiences to learn their housing challenges and gather suggestions for housing system improvements.
- A public survey of over 6,500 homeowners, renters, potential homebuyers, and landlords throughout Michigan.
- Solution Workgroups with 16 different theme areas that intersect with housing (e.g., financial institutions, local government, families living in poverty), involving more than 300 participants.
- Engagement with partners and stakeholders of the Michigan Campaign to End Homelessness, including focus groups with individuals who have experienced homelessness.
- Participation in numerous meetings and presentations with other partners and public to share and gather information.
- Review of plan drafts by housing subject matter experts.

The planning began in August 2020 with research activities that continued into 2021. In February 2021, the Partner Advisory Council began meeting, and the State Agency Group began meeting in June 2021. Additional input gathering—including the public survey, interviews, workgroups, and discussions with those with lived expertise—occurred throughout 2021 and is ongoing. The plan is currently being drafted, reviewed, and refined.

The final plan is slated for release in early May 2022, in connection with the Building Michigan Communities Conference (May 3-4). For more information about the conference, please visit buildingmicommunities.org.

What To Expect in the Plan

The Statewide Housing Plan has a five-year time horizon and envisions that Michigan’s successful housing ecosystem provides safe, healthy, affordable, and attainable housing for all in a community of their choice. The plan is currently under development and subject to revision. However, the contents of the plan are expected to include the following:

1

An overview of the purpose and parameters of the plan.

2

The context that informs the plan, including historical housing inequities, the current housing ecosystem, and current housing needs, to demonstrate why the plan is needed.

3

Description of research and engagement activities that informed the planning process.

4

Description of the principles on which the plan is based (equity, inclusion, human-centeredness, housing as a social determinant of health, intersectionality of housing with other sectors, and community).

Priorities



Equity and Racial Justice



Preventing and Ending Homelessness



Older Adult Housing



Homeownership



Housing Ecosystem



Housing Stock



Rental Housing



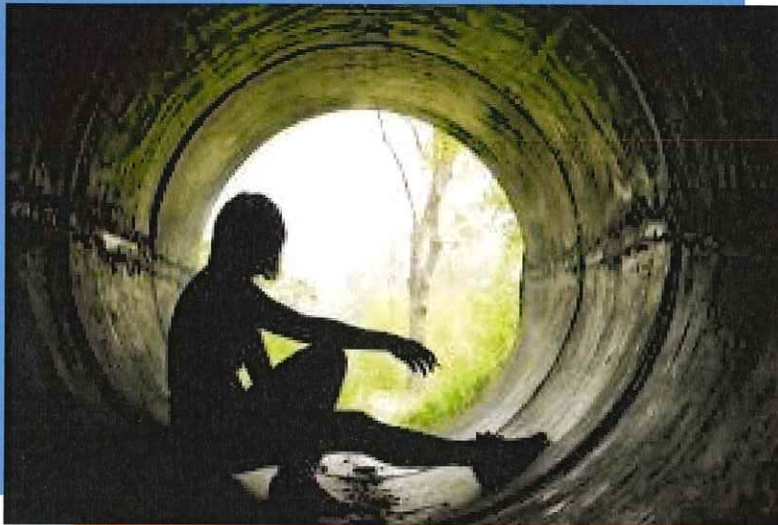
Communication and Education

The Statewide Housing Plan is designed to complement and align with other state-level plans that intersect with the housing sphere. These include plans for the **Michigan Statewide Housing Needs Assessment**, the **MI New Economy**, the **Michigan Campaign to End Homelessness**, the Michigan Department of Health and Human Services – Social Determinants of Health Strategy, **Michigan Department of Labor and Economic Opportunity’s Poverty Task Force**, and others.

The plan will be used as an overarching guide for strategic investment in housing throughout the state. The priority areas, goals, and strategies will inform metrics, the creation of tactics and specific actions for housing investment, driven by data on where, how many, and what types of housing are needed.

Next Steps

Implementation planning is in progress and action on the plan’s goals and strategies will start upon its release. In addition, in Summer 2022, a series of informational meetings will be conducted across the state to introduce members of the public to the key elements of the Statewide Housing Plan.

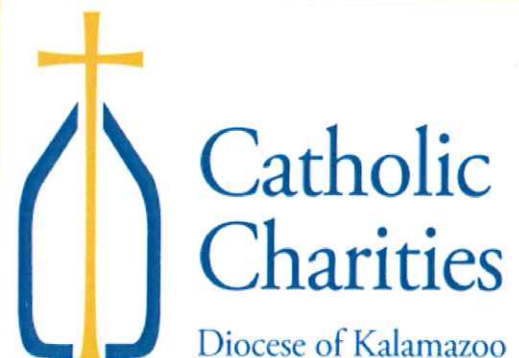


- ⇒ **Are you couch hopping or living in your car?**
- ⇒ **Are you in need of basic living supplies?**
- ⇒ **Do you need assistance finding a safe place to live?**
- ⇒ **Do you need help accessing health care or other resources?**

We are open 24/7 and ready to assist you!

The Ark offers housing, outreach, and support services for homeless and runaway youth and their families in southwest Michigan.

**990 West Kilgore Rd.
Kalamazoo, Michigan 49008
269-343-8765 or 1-800-873-8336
www.arkforyouth.org**



* Are you between the ages of 10 and 21?

* Do you need assistance finding shelter, food, clothing, employment or other immediate needs?

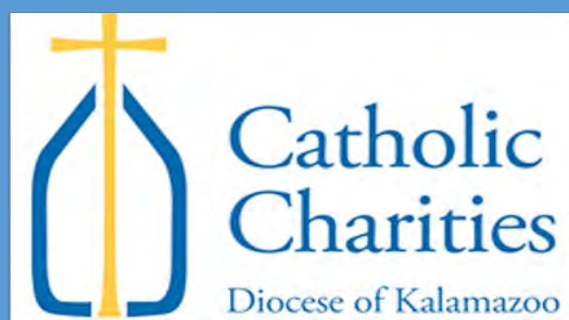
Community Outreach Case Managers are here to assist you!

The Outreach Program can assist with immediate needs and with creating goals to promote a quality future.



*For more information on the Outreach Program,
please contact Justin G. at:*

269-330-7335 or justingardner@ccdok.org



providing help, creating hope, serving all

Kailyn Alderman | she/her/hers

For those in need that don't qualify for our youth programs, you may direct them to me where I can then help connect them to relevant community resources.

Outreach Case Manager | Catholic Charities of Kalamazoo



We can help with...

- Crisis situations
- Homelessness or housing issues
- Family challenges & conflicts
- Anger management
- Life skills
- Education and employment needs
- Improved communication skills
- Improved health & well being
- Alternatives to living on the street



Call for help
today at
1-800-873-8336

Hablamos Espanol



The Ark Shelter

990 W. Kilgore Road
Kalamazoo, Michigan 49008
269-343-8765 or 1-800-873-8336
www.arkforyouth.org



Ark Youth Independent Living & Outreach

1819 Gull Road
Kalamazoo, Michigan 49048
269-381-9800 or 1-800-873-8336
outreach@ccdok.org



The Ark is a program of Catholic Charities Diocese of Kalamazoo



Housing & Support Services
for Runaway, Homeless &
Youth in Crisis



1-800-873-8336

Shelter

serving youth 10—17

- Safe, temporary place for youth who have run away from home, are homeless, have been kicked out of their home or are experiencing a crisis situation in their lives
- Shelter is open 24 hours a day, seven days a week. Youth may stay up to 21 days
- Problem-solving, case management, therapy, and advocacy for youth and families
- Youth are reunited with family or moved to a safe alternative environment
- Referrals and connections made to other agencies in the community as needed
- Keeps youth from living on the street and provides an effective diversion from the juvenile justice system
- Emphasis on Positive Youth Development, and modeling healthy life style behaviors
- Community based outreach services, and aftercare services available
- Empower to grow, change, and have a step-by-step plan

"I had dropped out of school and was sleeping on the couch at my friend's house. My case manager helped me find a place to live and now I am working on my GED."

- Former client



We help 100's
of homeless
and at-risk
young people
each year!

Our Vision

We envision respect for human dignity and ever-increasing stability and independence for individuals, families and communities we serve.

The Ark Services for Youth serves all individuals regardless of race, ethnicity, religious beliefs, gender or gender identity, sexual orientation or socio-economic status.

The Ark serves youth and families in Allegan, Barry, Berrien, Branch, Calhoun, Cass, Kalamazoo, St. Joseph and Van Buren counties.

Youth Independent Living

serving youth 17-21

- Safe and structured transitional housing
- Teaching self sufficiency, independence, life skills and civic responsibility
- Crisis intervention, problem-solving, case management, and connections to community resources
- Educational, employment, and career planning

Outreach

serving youth 10—21

- Crisis intervention, remote assessments, case management and referrals for assistance
- Drop In Centers: Offering free food, personal needs items, individual help, support and referrals. Call for times and locations.
- Reach homeless youth on the streets and provide help and support
- Recruitment, education and prevention workshops in schools and other organizations



Helping Churches Help People

www.loveincnwa.org

269-751-2533

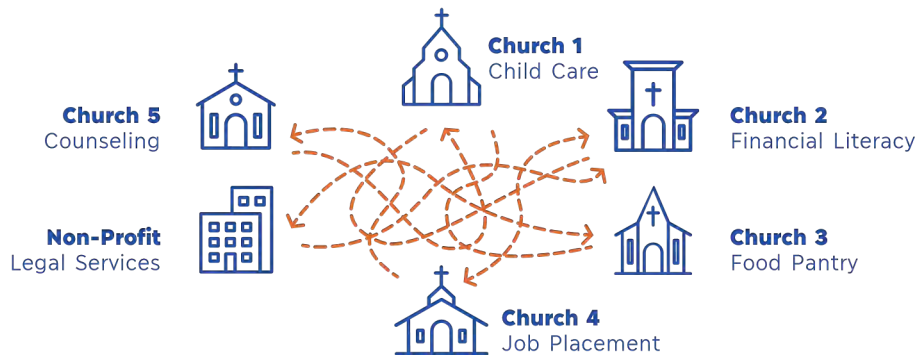
office@loveincnwa.org



We Help Churches Help People

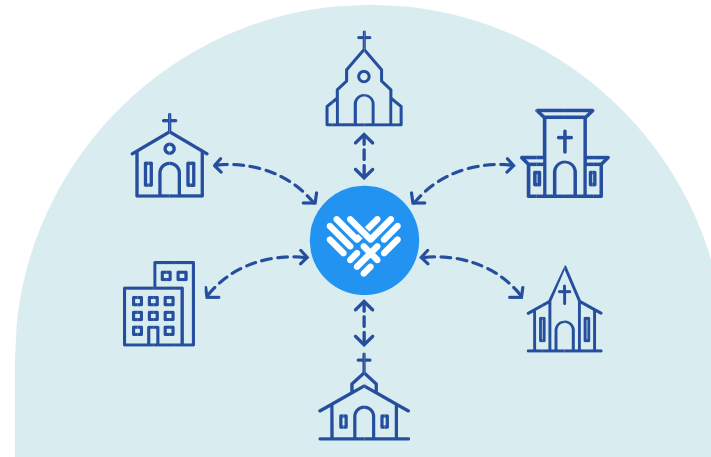
Churches serve their communities in different ways. One may have a financial literacy program, while another has housing assistance. Yet, when care is not coordinated, needs can be overlooked or duplicated, and people are not served in a holistic manner.

Love INC fosters collaboration and organizes holistic care to help churches serve their



neighbors and the community through a

network of resources and relationships. Love INC is able to connect caring church volunteers with their neighbors in need. It's a model that has not only been proven to transform lives, but communities, as well.



It Begins With A Call

When a neighbor has a need, they call Love INC. What's the first thing they'll hear? A volunteer who will take the time to listen and care for the person calling with compassion and discernment; who will inquire about the presenting need, but also explore the broader context of the person's situation.

Then We Make Connections

In every community, neighbors with needs are surrounded by Christians with skills and resources, who are called to help. Love INC helps churches provide holistic care for their neighbors by coordinating specific, manageable opportunities that mobilize the resources, gifts, and relationships of their congregations. Providing things like furniture, food pantries, and life skills classes, Love INC helps churches work across denominational lines to meet the tangible and intangible needs of their community.

It's about meeting a person where they're at and helping them
achieve their God-given potential

When We Move Beyond

Simply Meeting Needs, Transformation Is Possible

FOR INDIVIDUALS –

Ultimately, in partnership with local churches, our goal is to move beyond meeting short-term needs with our transformational ministry, which we call LIFE (Learning In Faith and Everyday) Skills. LIFE Skills is a program in which trained church volunteers journey alongside neighbors seeking assistance through weekly classes and mentoring. The goal is to provide a supportive environment to help people positively cope, identify strengths, and set goals. It is a holistic program encompassing the physical, emotional, mental, and spiritual components of life.

FOR COMMUNITIES –

Together with the churches in our community, we continue to explore the transformation of larger community issues and underlying or systemic needs, such as a lack of affordable housing, transportation, health care. Working together, the possibilities are endless.

**Every day, in our community,
people are struggling**

Struggling with relationships





Struggling to make ends meet
Struggling with access/opportunity
Struggling to find hope

**Yet, every day,
churches in**

Called in
invest in
relations
hips

our community are called

Called to see the image of God in others

Called to care about their neighbors

Called to share resources

Called to walk with those who are hurting

**Love INC helps connect the
calling of local churches
to the struggles of the
community**

What Does Church Partnership Look Like?

IT LOOKS LIKE LOVE INC:

- Assisting churches in going beyond benevolence to offer holistic, relational care to those outside of their own congregation.
- Decreasing church administrative efforts by providing a central location for receiving and reviewing requests for assistance.

- Identifying new ministry opportunities to meet gaps in community help and services.
- Coordinating long-term, self-help solutions for those with chronic need.
- Helping the community and churches lean into their strengths and work together as one body of Christ.

IT LOOKS LIKE CHURCHES:

-
- Living out the two greatest commandments to love God and to love their neighbors.
Leveraging their strengths and engaging the God-given gifts and resources of their congregation in the service of others.
-
- Providing specific, tangible opportunities for their congregation to exercise and grow in their faith.
Committing to their community by referring needs to Love INC, encouraging volunteerism, and participating in the financial support of this shared ministry.



Neighbors caring for Neighbors

282 12th Street
Plainwell, MI 49080
269-685-4166
www.christianneighbors.org



Food Pantry—Anyone who lives in the Martin, Otsego and Plainwell school districts can shop for groceries once per month. They receive a food box based on their family size.

Emergency Financial Assistance—Those who reside in the Martin, Otsego and Plainwell school districts may qualify for assistance with rent, security deposits, utilities and prescriptions.

Housing Stabilization Program—available to all Allegan County residents. Beginning in 2023 (once our new building is complete) we will be offering education and resource programs and classes to help homeless individuals find housing and to keep families stabilized in their homes. Some of the programs will include weekly resource workshop in a computer lab, credit repair class, budget and financial mentoring, landlord mediation and others to be announced.



Housing stabilization helps strengthen families

Anyone who comes to Christian Neighbors has access to a case manager to help with immediate concerns and to set long term stabilization goals and assistance with then achieving those goals.

Please contact Kim Shafer with any questions about our services and programs at

kshafer@christianneighbors.org

269-685-4166 ext. 102

PARTNER WITH LAKESHORE HABITAT

Every helping hand makes a difference. You can make an impact by partnering with your neighbors as they seek affordable housing options with Lakeshore Habitat.



HOMEOWNER TESTIMONIAL

"The human value, the human capital of the people who inhabit Holland is incredible. The kindness, good treatment, courtesy, hospitality, focus on helping those in need, open arms and heart attest to the values of Holland and its people... For all this to have blessed us... my family and I are immensely grateful!"

AMAURYS RODRIGUEZ MATOS
Lakeshore Habitat Homeowner



VOLUNTEER



- Construction (NO experience needed)
- ReStore
- Office
- Mentor Homeowners

GIVE



- Donate Funds
- Donate items to ReStore
- Donate Services, Materials or Land
- Pick up/deconstruction services

SPONSOR



- Great opportunities and benefits
- Contact Marisol at marisol@lakeshorehabitat.org



@lakeshorehabitat
@lakeshorehabitatrestore



@lakeshorehabitat
@lakeshorerestore



LPB AGENCY LIST 05/2023



Allegan Area ESA

www.alleganaesa.org / 269-512-7700

Allegan County Offices

www.allegancounty.org / 269-673-0205

Allegan County Homeless Assistance Program (HAP) Managed by OnPoint

www.onpointallegan.org/housing-assistance HAP line: 269-686-4703

Email: housing@onpointallegan.org

Allegan Friend of the Court

www.allegancounty.org / 877-543-2660

Allegan Homeless Solutions

www.alleganhomelessolutions.org

CARES Southwest Michigan

www.caresswm.org / 269-381-2437

Catholic Charities Diocese of Kalamazoo

www.ccdok.org / 269-381-9800

Christian Neighbors SE

www.christianneighbors.org / 269-685-4166

Community Action of Allegan County

www.communityactionallegan.org / 269-673-5472

Gryphon Place 2-1-1

www.gryphon.org / 269-381-1510

KENT ISD

www.kentisd.org / 616-364-1333

Lakeshore Habitat for Humanity

www.lakeshorehabitat.org / 616-393-8001

Love In the Name of Christ

www.loveincnwa.org / 269-751-2533

OnPoint (Formerly known as Allegan County Community Mental Health Services)

www.onpointallegan.org

24/7 crisis line: 1-888-354-0596

People Helping People (Fennville, Pullman)

www.phppullman.org / 269-236-2001

Project Hope (Dorr & NE Allegan Cty)

www.projecthope-dorr.org / 616-681-4673

Resilience (Allegan)

www.resiliencemi.org / 24 hour help line:

English: 1-800-848-5991 / Spanish: 1-866-728-2131

Sylvia's Place (Only DV shelter in AC)

www.sylviasplace.com

24 hour crisis line: 269-673-8700 or 888-411-7837

United Way of Ottawa & Allegan Counties

www.acuw.org / 616-396-7811

Volunteers of America

www.voami.org

West Michigan Works

www.westmiworks.org / 269-686-5079

70x7 Life Recovery

www.70x7liferecovery.org / 616-796-0685



**United Way of Ottawa
and Allegan Counties**

QUESTIONS? CONTACT KATRINA PELFREY AT 616.610.7914 OR KPELFREY@ACUW.ORG.