

# *COVID-19 IN SCHOOLS*

*2023-2024*

*Allegan County Health Department*

## Who is Impacted

## Public Health Recommendations

### COVID-19 Infection

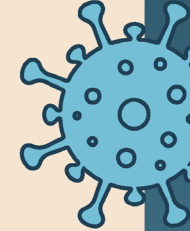
Any individual who tests positive for COVID-19 and/or displays COVID-19 symptoms (without an alternate diagnosis or negative COVID-19 test) regardless of vaccination status.



Isolate at home for 5 days (day "0" is day symptoms begin or day test was taken for those without symptoms); and



If symptoms have improved or no symptoms developed, may leave isolation after day 5 and wear a well-fitting mask, for 5 more days (ending after day 10).\*



### COVID-19 Exposure

Close contact exposed to someone with COVID-19, regardless of vaccination status.



Monitor symptoms for 10 days.



Wear a well-fitting mask around others for 10 days after exposure.



Test 5 days after exposure and if symptoms develop.



Avoid unmasked activities or activities with higher risk of exposing vulnerable individuals.\*\*

\* You may remove your mask sooner than day 10 with two sequential negative antigen tests 48 hours apart. If a mask cannot be worn, 10 days of home isolation is recommended.

\*\* Activities with immunocompromised or other high-risk individuals, social/recreational activities in congregate settings or when community levels are high.

- Above are the recommendations released by the state of Michigan
- Also see a list of recommendations on [isolating and masking here](#).

# Covid-19 Case Reported to School:

- Report through the Communicable Disease Reporting system. Covid-19 cases are reported in real time rather than on a weekly basis with other CD reporting. MDHHS' updated [SOP](#) does highlight this requirement of daily submission to the LHD.
- ACHD will then receive notification of the new case and add the case to the shared Sharepoint site between ACHD and the schools. We will also investigate the case and provide isolation dates.

The screenshot displays the Allegheny County Health Department's website. The top navigation bar includes 'Online Services', 'Departments', 'Courts & Law Enforcement', 'Health', 'Connect', and 'Find a Service'. The main content area is divided into two columns. The left column features a sidebar with 'Communicable Diseases' (expanded), 'Mpox', 'Diseases Fact Sheets', 'STDs', and 'Vision and Hearing'. Below this is a 'Contact' section for the Allegheny County Health Dept. and an 'Hours' section for Monday-Friday. The right column lists 'Monthly Communicable Disease Report' links for each month from August 2022 to March 2023. Under 'Resources', there are links for 'Disease Fact Sheets', 'Emerging Diseases in Michigan - Information on Lyme Disease and Tick Testing', and 'Communicable Disease Reporting Tips' (highlighted with a red arrow). The 'Additional Information' section includes links to MDHHS guides and forms. The bottom of the page features the Allegheny County seal and the title 'Allegheny County Community Health Communicable Disease Reporting'. Below this, there are sections for 'Weekly Communicable Disease Reporting' (with a link for the current week ending August 12, 2022), 'COVID-19 Reporting' (with a link to create a new report), and 'Other' (with a 'Sign Out' link).

Online Services Departments Courts & Law Enforcement Health Connect Find a Service

Communicable Diseases

- + Mpox

Diseases Fact Sheets

STDs

Vision and Hearing

Contact

Allegheny County Health Dept.  
3255 122nd Ave, Ste. 200  
Allegheny, MI 49010  
(269) 673-5411  
(269) 673-4172 Fax

[Nondiscrimination Notice](#)

Hours

Monday - Friday  
8:00am - 5:00pm

<https://www.communicablediseasereporting.com/allegheny.php>

Monthly Communicable Disease Report (March 2023)

- Monthly Communicable Disease Report (February 2023)
- Monthly Communicable Disease Report (January 2023)
- Monthly Communicable Disease Report (December 2022)
- Monthly Communicable Disease Report (November 2022)
- Monthly Communicable Disease Report (October 2022)
- Monthly Communicable Disease Report (September 2022)
- Monthly Communicable Disease Report (August 2022)

Resources:

- Disease Fact Sheets
- Emerging Diseases in Michigan - Information on Lyme Disease and Tick Testing
- Communicable Disease School Reporting System
  - Communicable Disease Reporting Tips

Additional Information:

- MDHHS Health Care Professional's Guide to Disease Reporting Brick Book 2023
- MDHHS Reportable Diseases in Michigan by Condition 2023
- MDHHS Reportable Diseases in Michigan by Pathogen 2023
- When to Stay Home
- Mandatory Communicable Disease Report Form 2023 (For Providers)
- FIGHT THE FLU!

Allegheny County Community Health

## Communicable Disease Reporting

Weekly Communicable Disease Reporting

- Enter report for the current week, ending Friday, August 12, 2022

COVID-19 Reporting

Once you click the link below to create a report, you will have a limited time to complete the form. Please collect any close contact information before continuing.

- Create new COVID-19 report

Other

- Sign Out

Copyright © 2022 KVCco, LLC. All rights reserved.

# Covid Case Reporting Continued

## Facility Contact Information

**ACHD Power Users School**  
3255 122nd Avenue  
Suite 200  
Allegan, MI 49010  
Phone: 269-673-5411  
E-Mail: COVIDvaccine@allegancounty.org

## Student/Staff Information

\* = required data

1) COVID-19 Positive Case (First and Last Name) \*

2) COVID-19 Positive Case DOB \*

3) Parent/Guardian Name \*

4) Parent/Guardian Phone \*

5) Parent/Guardian E-Mail

5) Parent/Guardian E-Mail

6) Address/County of Residence \*

7) Date the positive case developed symptoms (if asymptomatic, use test collection date)

8) Date the person was tested (if known)

9) Facility where the positive case was tested (if known)

10) Positive case last day at school or sport \*

11) Grade \*

12) How many students at this school/daycare have tested positive for COVID-19 in the past 2 weeks?

## Close Contacts

13) Were mitigation measures in place in the classroom?

Yes  No

14) Are there any Close Contacts to the COVID-19 positive individual?

Yes  No

If you selected Yes, please complete the next question.

If you selected No, please [skip next question](#).

15) List any close contacts here

	Any other information you want to share	Grade	County of Residence (If known)	Address *	Vaccinated *	Parent/Guardian Name *	E-Mail *
1							
2							
3							
4							
5							

Add Rows

Please share the steps your school/daycare has already taken in response to being notified about this positive case:

16) Sent positive person home/told them not to return to school/daycare

Yes  No

17) Notified parents/students and employees of a positive case and potential exposure, while strictly maintaining privacy and confidentiality of the person who tested positive, and you cannot divulge his/her name to other students/parents/employees.

Yes  No

18) Developed list of close contacts and notified them about quarantine

Yes  No

19) Cleaned and disinfected the facility/areas the positive person was in

Yes  No

20) Other, please explain

21) Please share any other information that could be helpful to know at this time.

- ACHD will also post a dashboard reflecting CD numbers daily. Located [here](#) under 'reports'.



Online Services

Departments

Courts & Law Enforcement

Health

Connect

Find a Service



COVID-19 Resources Archive

COVID-19 Data

COVID-19 Volunteers

COVID-19 Plans and Tools (for County Offices)

### Contact

**Allegan County Health Dept.**

3255 122nd Ave, Ste. 200

Allegan, MI 49010

(269) 673-5411

(269) 673-4172 Fax

[Nondiscrimination Notice](#)

### Connect



[Subscribe to COVID Updates](#)



[Facebook](#)

To find guidance for childcare settings, view our [Business and Workplace](#) page.

## Resources for Schools

- [Operational Guidance for K-12 Schools and Early Care and Education Programs to Support Safe In-Person Learning](#)
- [Communicable Disease Reporting in Schools Presentation](#)
- [COVID-19 in Schools Presentation](#)
- [School Testing for COVID-19 Toolkit](#)
- [School Toolkit for Responding to COVID-19 Cases](#)
- [Ventilation in Schools and Childcare Programs](#)(including an Interactive School Ventilation Tool)
- [Frequently Asked Questions for K-12 and Early Care and Education \(ECE\) Settings](#)
- [Mask Guide for Kids- Fall 2021](#)
- [Masks for Kids](#)

## Reports

 [Allegan Co CD School Dashboard \[7.21.23 Daily\] FINAL](#)



Free viewers are required for some of the attached documents.

They can be downloaded by clicking on the icons below.



## HRAs:

- Health Resource Advocates are ACHD employees here to help the schools
  - We currently have 5 HRAs, with 1 able to be onsite. These 5 HRAs are a team here to help any school district within Allegan County.
  - The onsite HRA is also available to help with testing. If you need assistance with covid-19 testing, please contact ACHD to set up a date and location.
  - While the primary focus of the HRAs is to help with communicable disease in the schools, they are also able to help schools with additional projects and resources. I.E. helping with educational materials, graphics, finding resources, managing CDs manual, etc.
-

## Contact Information:

Contact Tracing Coordinator/Main school contact:

Emily Warren

269-686-4519

[ewarren@allegancounty.org](mailto:ewarren@allegancounty.org)

Onsite HRA:

Michelle Boutain

269-686-4588

[mboutain@allegancounty.org](mailto:mboutain@allegancounty.org)

Offsite HRAs:

Amy Campbell

269 686-5349

[acampbell@allegancounty.org](mailto:acampbell@allegancounty.org)

Andreea Micu

269 686-5365

[amicu@allegancounty.org](mailto:amicu@allegancounty.org)

Richaun Riddick

269 686-5356

[rriddick@allegancounty.org](mailto:rriddick@allegancounty.org)

Emmaniela Papillon

269 686-5368

[epapillon@allegancounty.org](mailto:epapillon@allegancounty.org)

---