

# GROUNDWATER AVAILABILITY

What issues need to be addressed to provide reliable and safe groundwater in Allegan County? Are there groundwater availability issues (demand, health risks, quality, vulnerability, etc.) that are more relevant to your community?

Elect a scribe to write down and prioritize your group's thoughts, including groundwater availability issues and potential solutions.

## SIZZLING

These issues are pressing and important, and should be considered right away

ISSUE

SOLUTION

## HOT

These issues are important and need to be addressed sooner rather than later

ISSUE

SOLUTION

## SIMMERING

These issues might be on the back burner right now, but we should be mindful of them moving forward

ISSUE

SOLUTION

**HEAT  
INDEX**

Communities and/or Government Agencies your group represents:

# GROUNDWATER GUIDELINES

What issues need to be addressed to protect, preserve, and manage groundwater in Allegan County? Are there strategies for improved groundwater management that can be executed at a local, multi-jurisdictional, or county level?

Elect a scribe to write down and prioritize your group's thoughts, including groundwater guideline issues and potential solutions.

## SIZZLING

These issues are pressing and important, and should be considered right away

ISSUE

SOLUTION

## HOT

These issues are important and need to be addressed sooner rather than later

ISSUE

SOLUTION

## SIMMERING

These issues might be on the back burner right now, but we should be mindful of them moving forward

ISSUE

SOLUTION

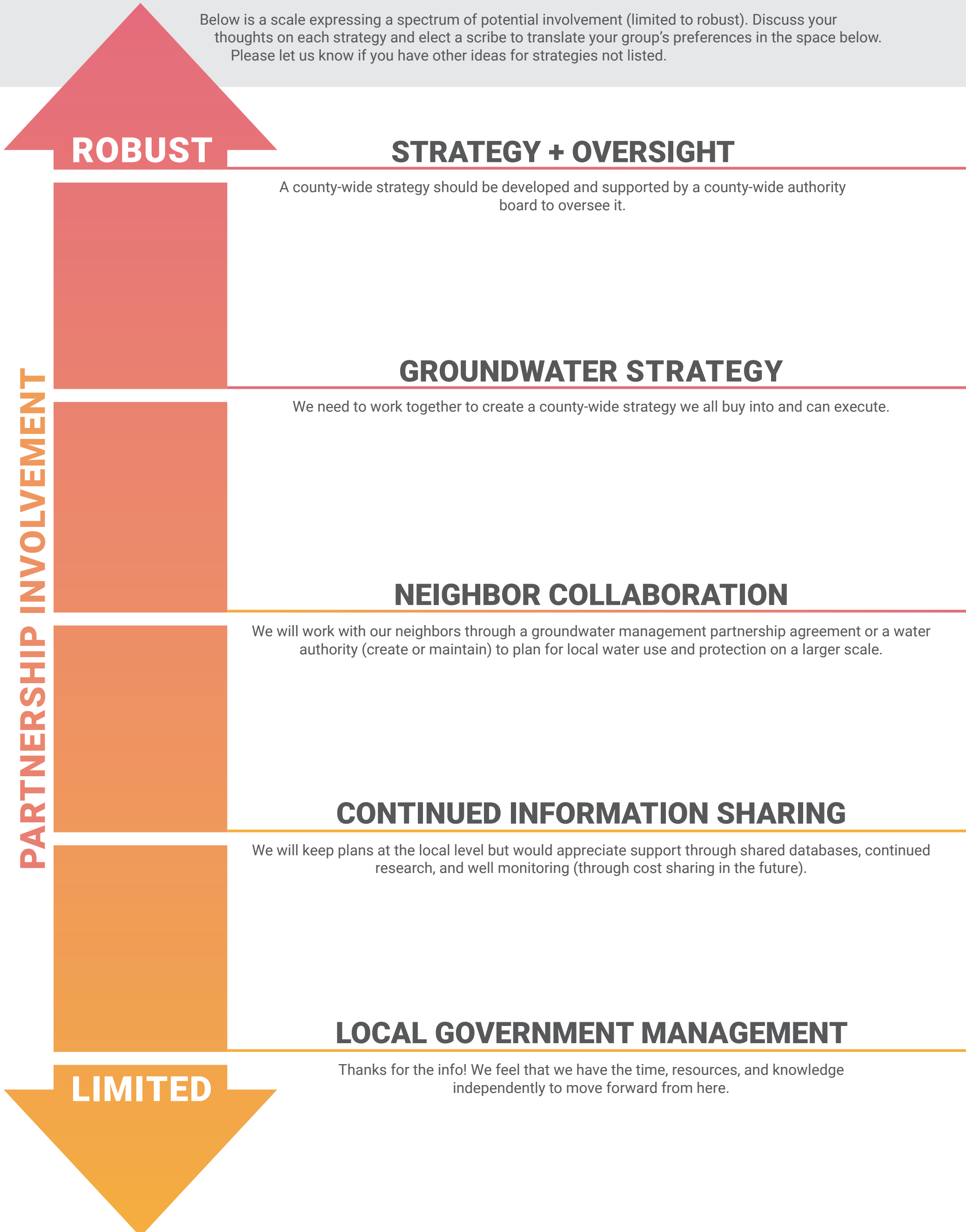
**HEAT  
INDEX**

Communities and/or Government Agencies your group represents:

# GROUNDWATER PARTNERSHIPS

What are your thoughts on how partnerships could assist in resource management and protection of groundwater to best support your community?

Below is a scale expressing a spectrum of potential involvement (limited to robust). Discuss your thoughts on each strategy and elect a scribe to translate your group's preferences in the space below. Please let us know if you have other ideas for strategies not listed.



Communities and/or Government Agencies your group represents: