

Parcel Viewer & Tax Map Application Tutorial

Welcome to the Allegan County Parcel and Tax Map Viewer! This tutorial will teach you how to print your own custom tax map. Please follow along and if you have any additional questions reach out to gis@allegancounty.org.

The Allegan County GIS portal can be accessed at <https://www.allegancounty.org/GIS> and contains a number of different interactive mapping applications.

Accessing the Mapping Application

From this GIS Maps sub-site (<https://www.allegancounty.org/online-services/gis-data-library/maps>), there are (3) different interactive mapping applications available for your use. This guide will take you step by step through the “Parcel & Tax Map Viewer – Current” interactive map, which provides the most recent parcel and tax related information, updated monthly.

The “Parcel & Tax Map Viewer – Archive” interactive map contains a snapshot in time from the 2023 equalized data set, updated each spring of the following year.

The third mapping tool, “Interactive GIS mapping application” is the an more comprehensive mapping tool that contains a much larger and varied collection of other mapping layer to provide a more robust mapping experience. It is not specialized to for tax map information like the other two.

INTERACTIVE MAPS

[Parcel & Tax Map Viewer - Current](#) - (more current parcel data)

Interactive map designed to focus specifically on parcels and tax related information, with options to print custom tax maps with and without aerial imagery.

[Parcel & Tax Map Viewer - Archive](#) - (2021 data set)

Archive of parcel-based tax maps for all of Allegan County

[Interactive GIS mapping Application](#)

An interactive application that allows you to utilize varying datasets/layers to create and print your own custome geographic map.

Parcel Viewer & Tax Map Application Tutorial

Basic Navigation and Toolbar

For the “Parcel & Tax Map Viewer – Current” interactive map, the navigation bar houses all the important widgets needed to create and print a custom map.

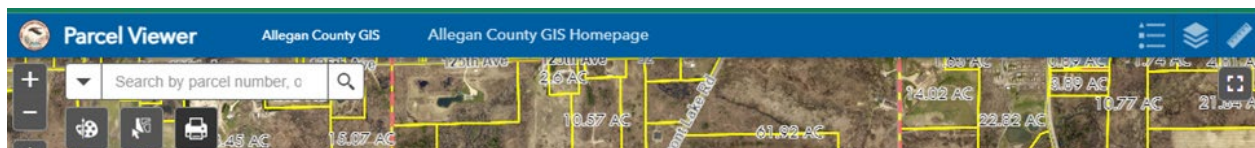
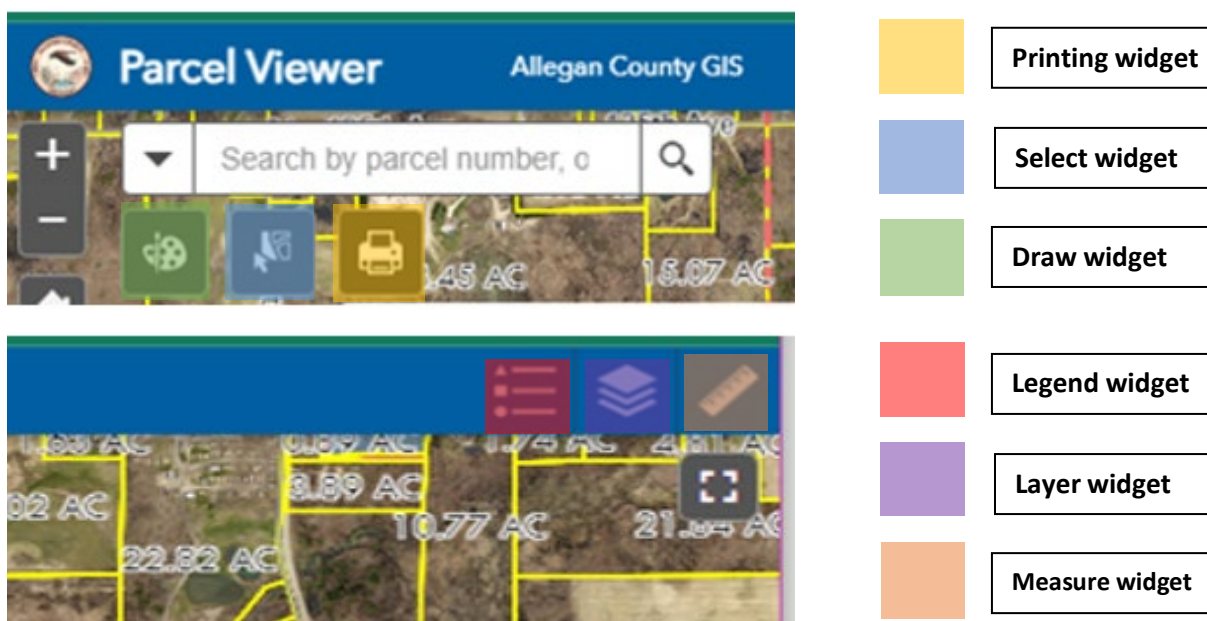
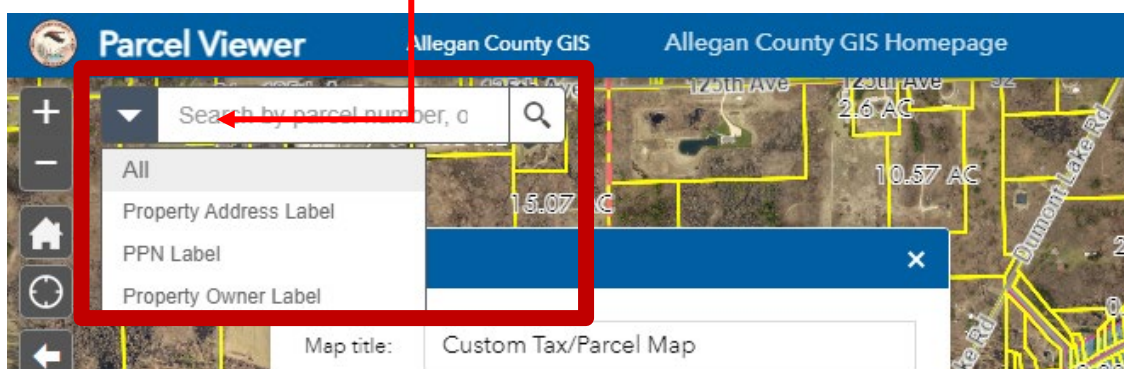


Figure 1 The Parcel Viewer navigation bar. Here you can find widgets for printing, measuring, drawing, and the legend.



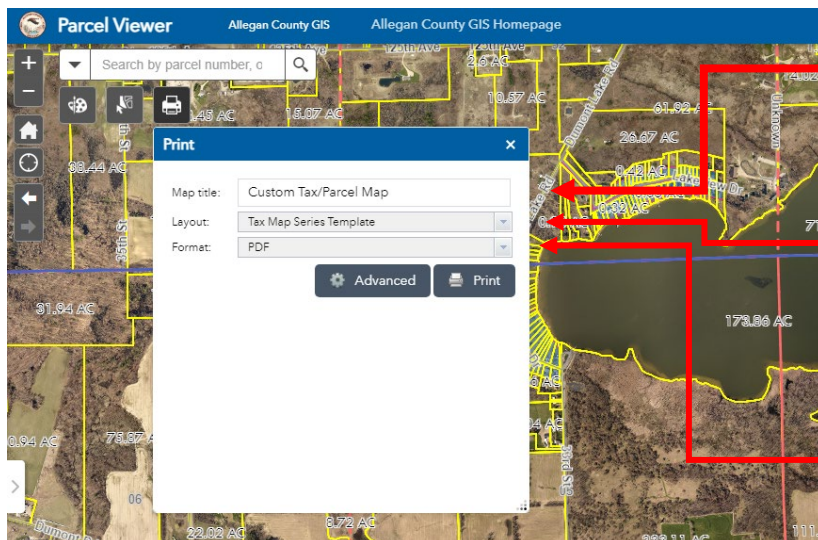
The **SEARCH BAR** utilizes both Allegan County and Google data to locate specific places. You can select by **property address**, **PPN (Primary Parcel Number)**, or **property owner name** by using the down arrow in the search bar.



Parcel Viewer & Tax Map Application Tutorial

Printing a Tax Map

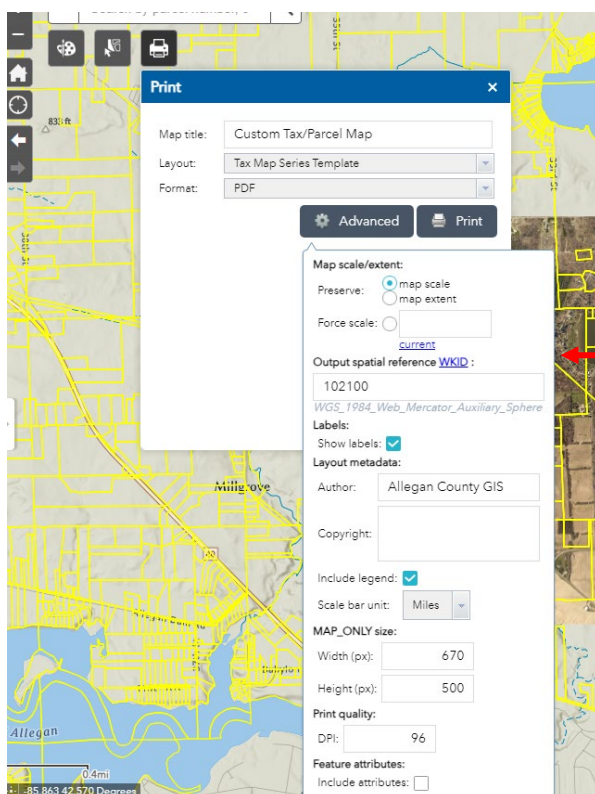
The Print widget allows you to take your search result and print it into a static tax map format. It's as easy as clicking a few buttons!



You can choose to **name your map** however you wish.

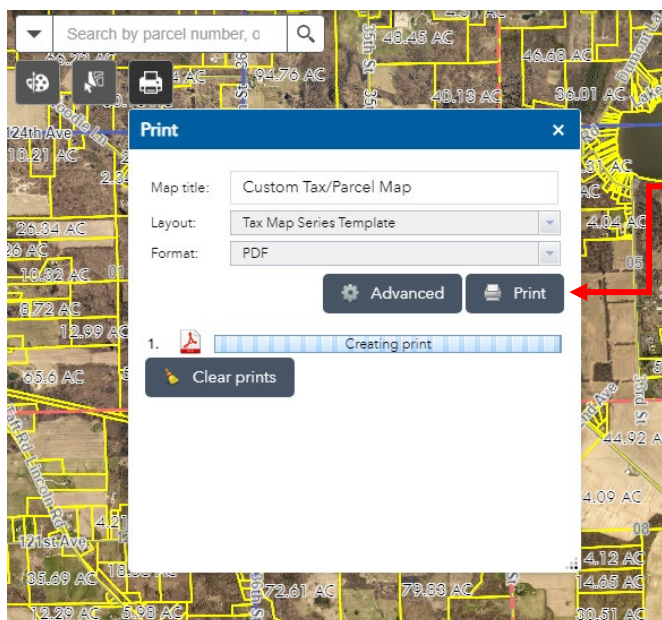
The default **layout** is premade and reflects previous tax map standards. You can choose to change this to a map image only by using the drop-down menu.

Format let's you choose from a PDF to a simple image (JPEG). The default is a PDF.

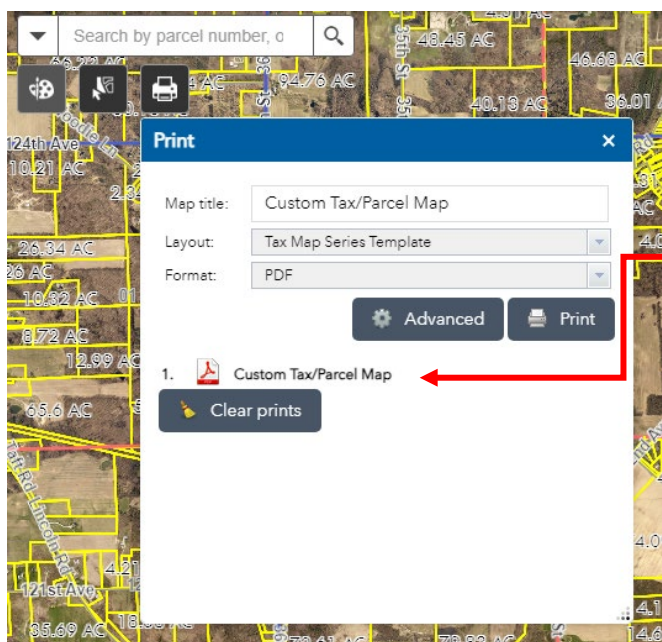


The printing widget also offers advanced options for those that have higher mapping capabilities. These options include attribute featuring, scale bar options, and extent adjustments. Utilizing this is not necessary, however.

Parcel Viewer & Tax Map Application Tutorial



When you are ready to print your map, simply click the Print button and it will generate your map link, displaying the 'Creating print' message.



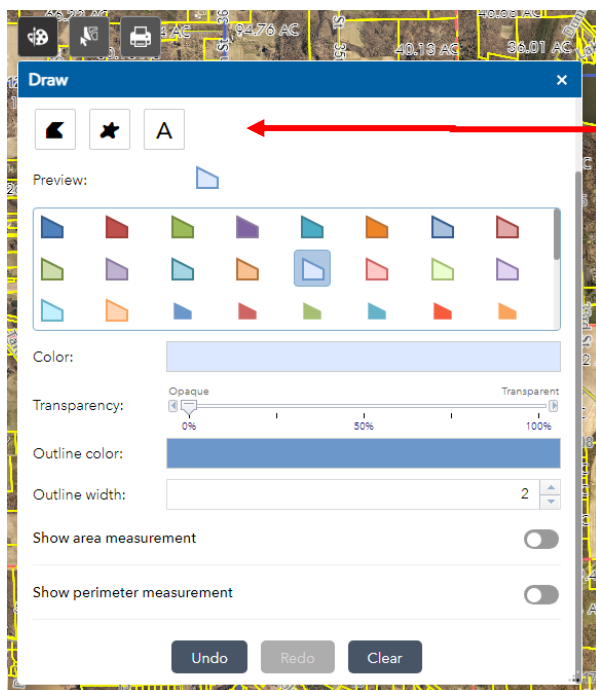
When the map is fully generated you can click the map and it will open what you created in another window, ready for you to print out!

That's all there is to printing! Just a simple procedure to have a professional map printed in your own home.

Parcel Viewer & Tax Map Application Tutorial

The Drawing Widget

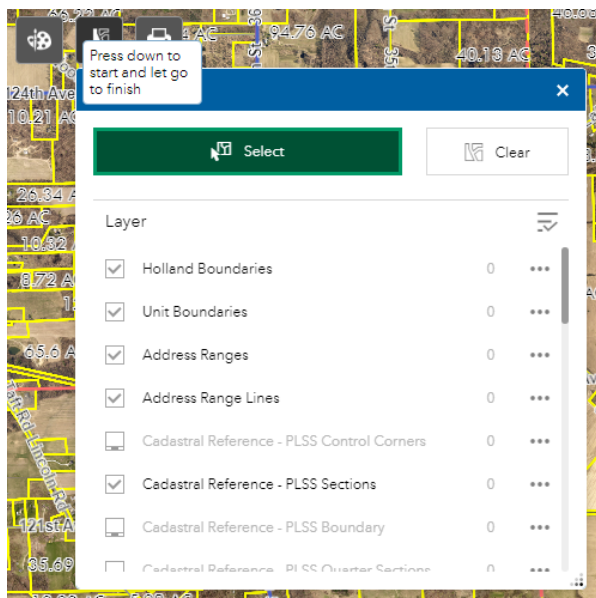
The draw widget allows you to add text and simple shapes to your map to further your customization.



There are a host of options for you to select from. Change the color, transparency, and even allow for the area of your shape to be displayed. Anything you create will be visible if you choose to print a map.

The Select Widget

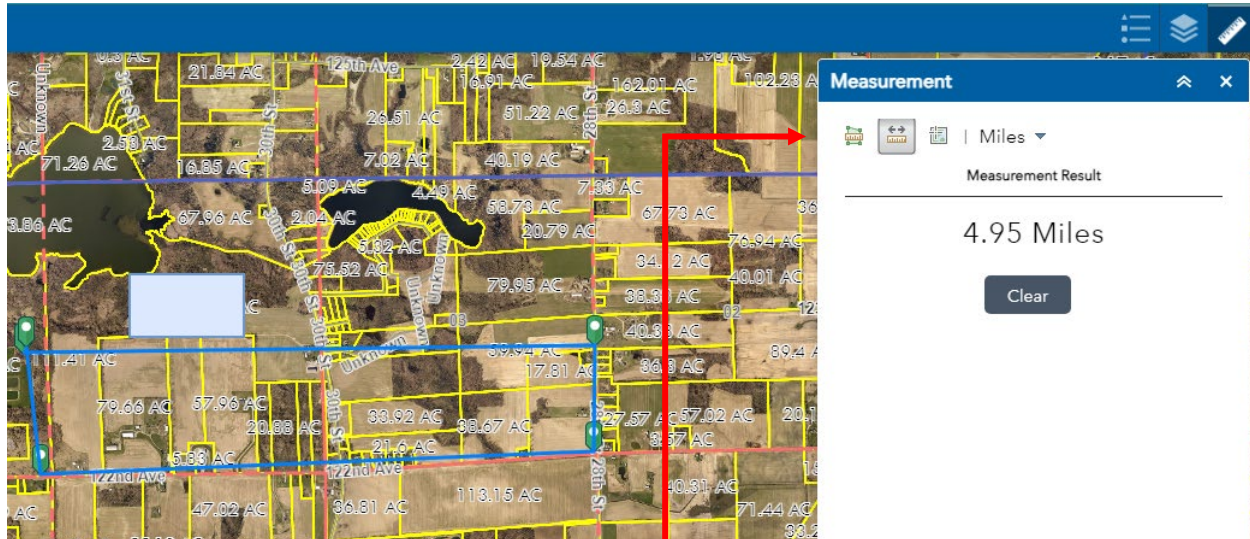
The select widget allows you to select from specific datasets.



You can turn off any dataset if you don't want to select anything from it. For example, you want to select a multitude of parcels, just press down and hold!

Parcel Viewer & Tax Map Application Tutorial

The select widget allows you to select from specific datasets.



Finally, the measurement tool allows you to get a general idea of the distance between two points on the map. You can change the unit by using the drop-down menu.

This concludes the quick tutorial on printing custom maps. Please reach out for any questions or suggestions! Happy mapping!