



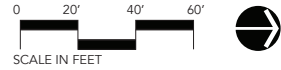
# PROPOSED

- A** 5' wide concrete walk
- B** Renovated asphalt drive to boat launch and barrier-free parking
- C** Electric gate with vehicle detection loop
- D** Renovated concrete drive to boat launch
- E** Security light
- F** Wi-fi controlled pay station for entry
- G** 6' bench on concrete pad (4 total)
- H** Expand beach 23' x 225'
- I** Pedestrian crossing with solar-powered rapid flashing beacon, both sides of Patterson
- J** New swings and safety surfacing
- K** Restroom building: convert lighting to LED, add motion sensors
- L** New shade tree (typical)
- M** 'Kayak Drop-Off, No Parking' sign
- N** 'Pedestrian Crossing Ahead' sign
- O** Accessible kayak launch
- P** Accessible bench with wheelchair space
- Q** Maintenance barn: convert lighting to LED, add motion sensors
- R** New boat launch (not included in grant)



# SITE PLAN

GUN LAKE PARK IMPROVEMENTS  
 WAYLAND, MICHIGAN

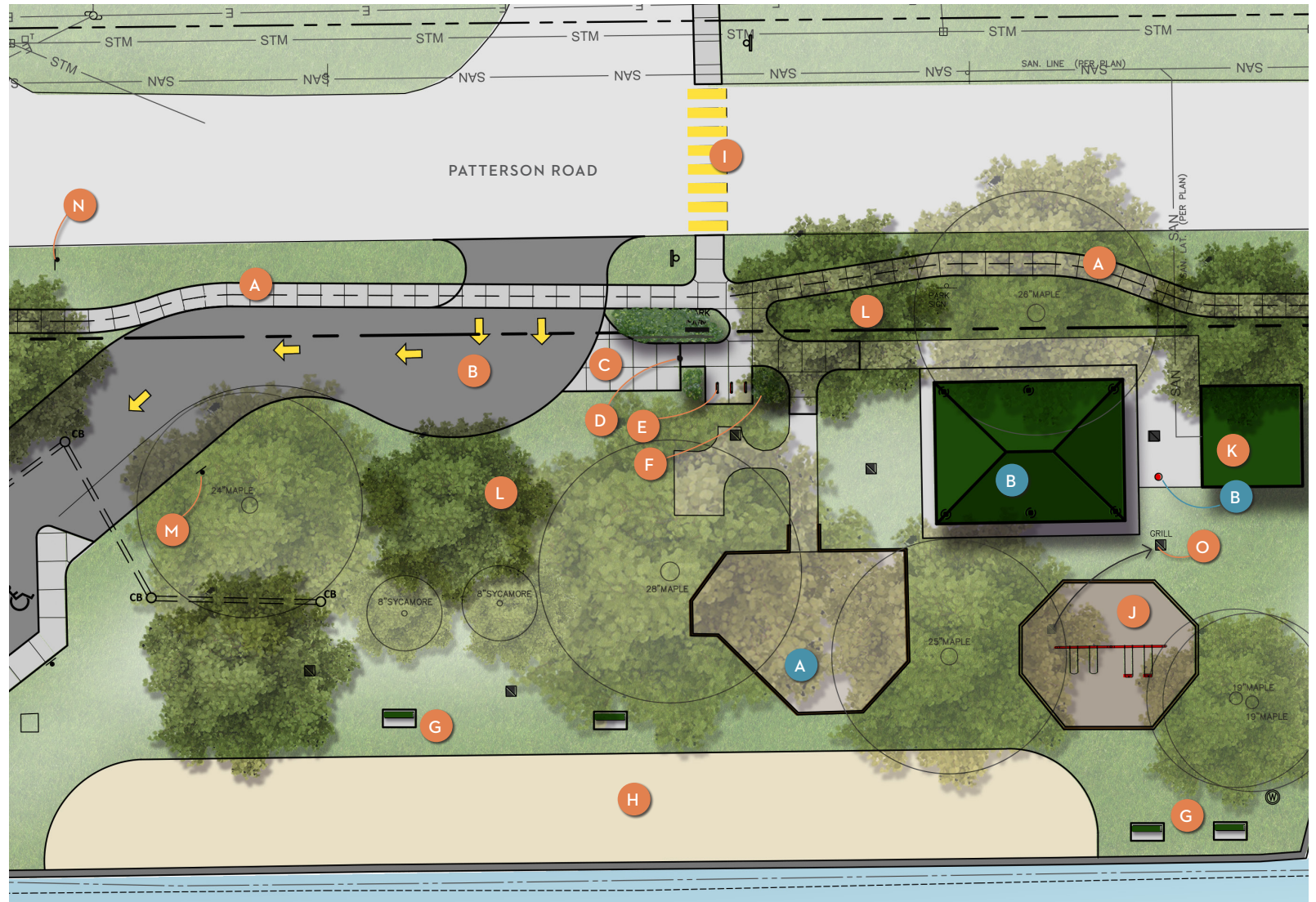


## PROPOSED

- A** 5' wide concrete walk
- B** Renovated asphalt drive to boat launch and barrier-free parking
- C** Unloading space
- D** Bollard
- E** Bike racks (3)
- F** Low maintenance plantings
- G** 6' bench on concrete pad (4 total)
- H** Expand beach 23' x 225'
- I** Pedestrian crossing with solar-powered rapid flashing beacon, both sides of Patterson Road
- J** New swings and safety surfacing
- K** Restroom building: convert lighting to LED, add motion sensors
- L** New shade tree (typical)
- M** 'Kayak Drop-Off, No Parking' sign
- N** 'Pedestrian Crossing Ahead' sign
- O** Shift existing grill

## EXISTING

- A** Play area
- B** Picnic shelter
- C** Drinking Fountain



# ENLARGEMENT

GUN LAKE PARK IMPROVEMENTS  
WAYLAND, MICHIGAN

