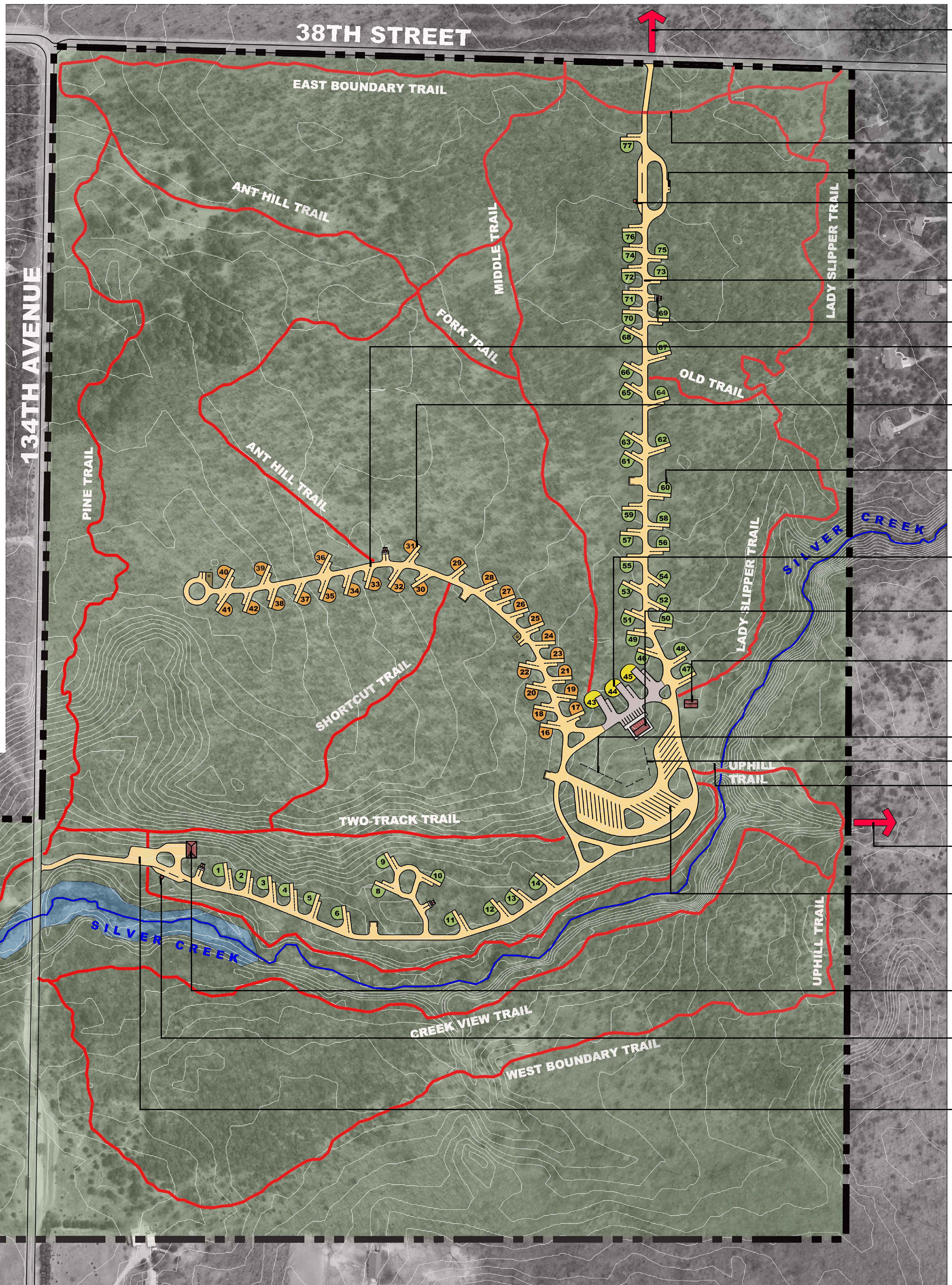
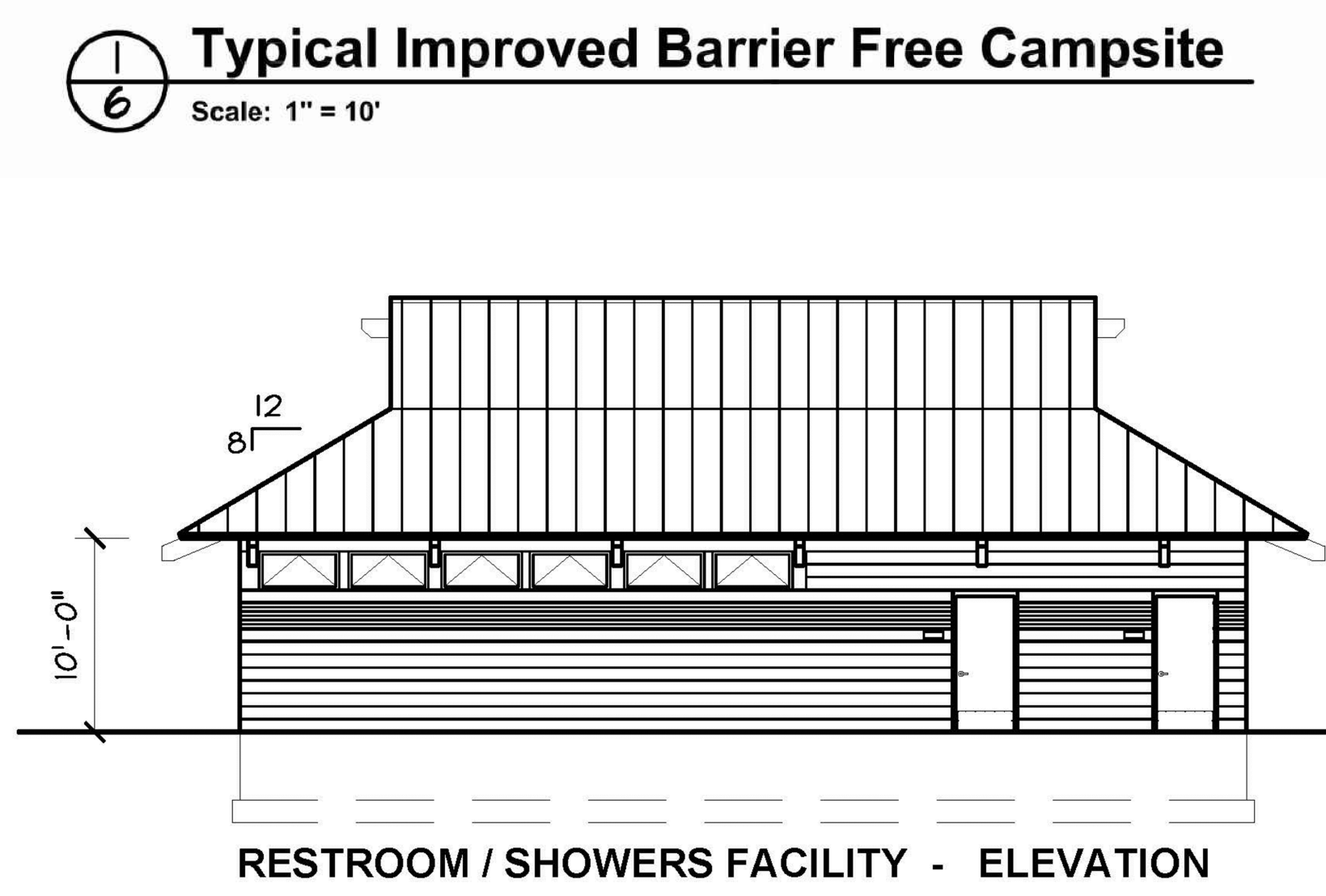
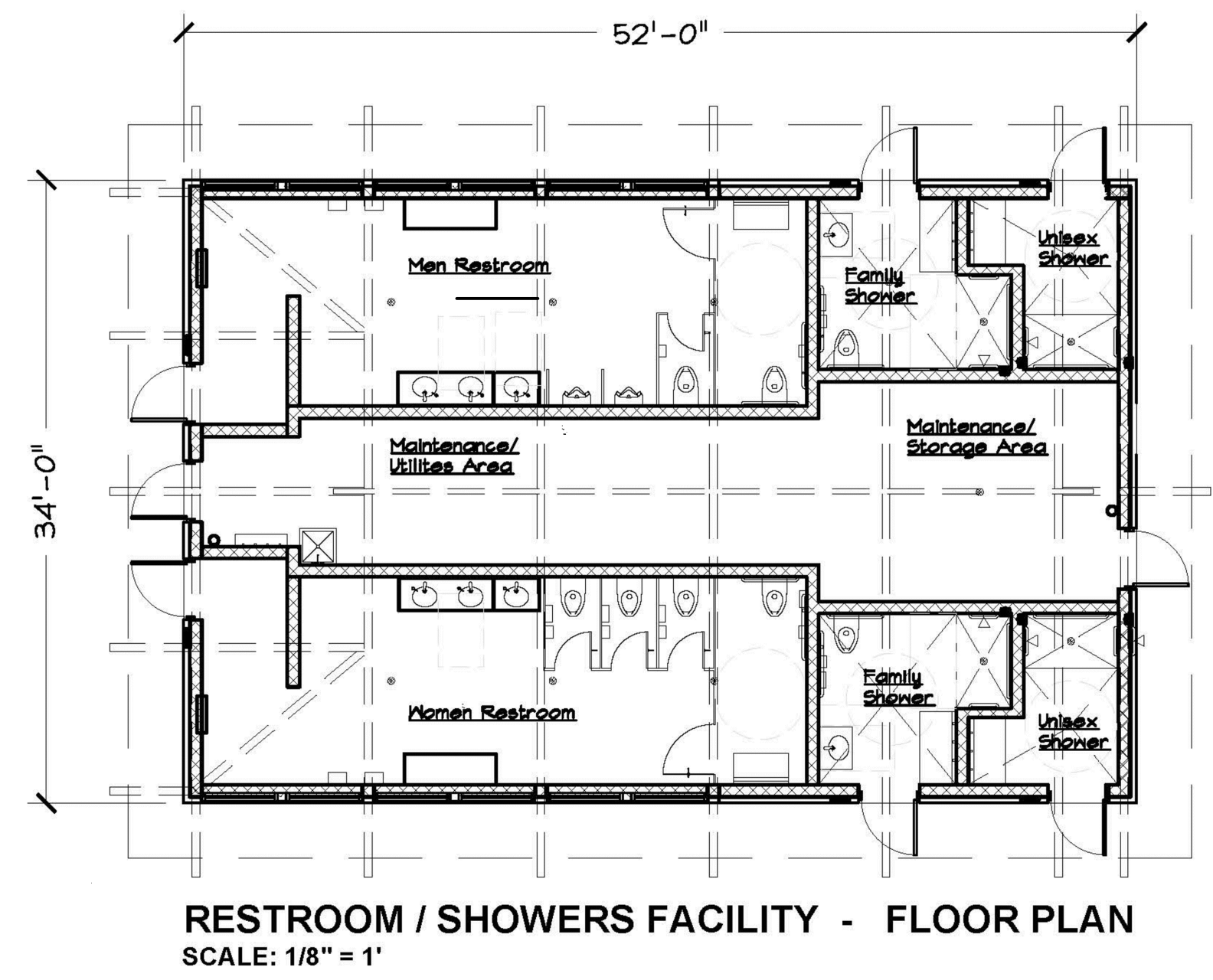
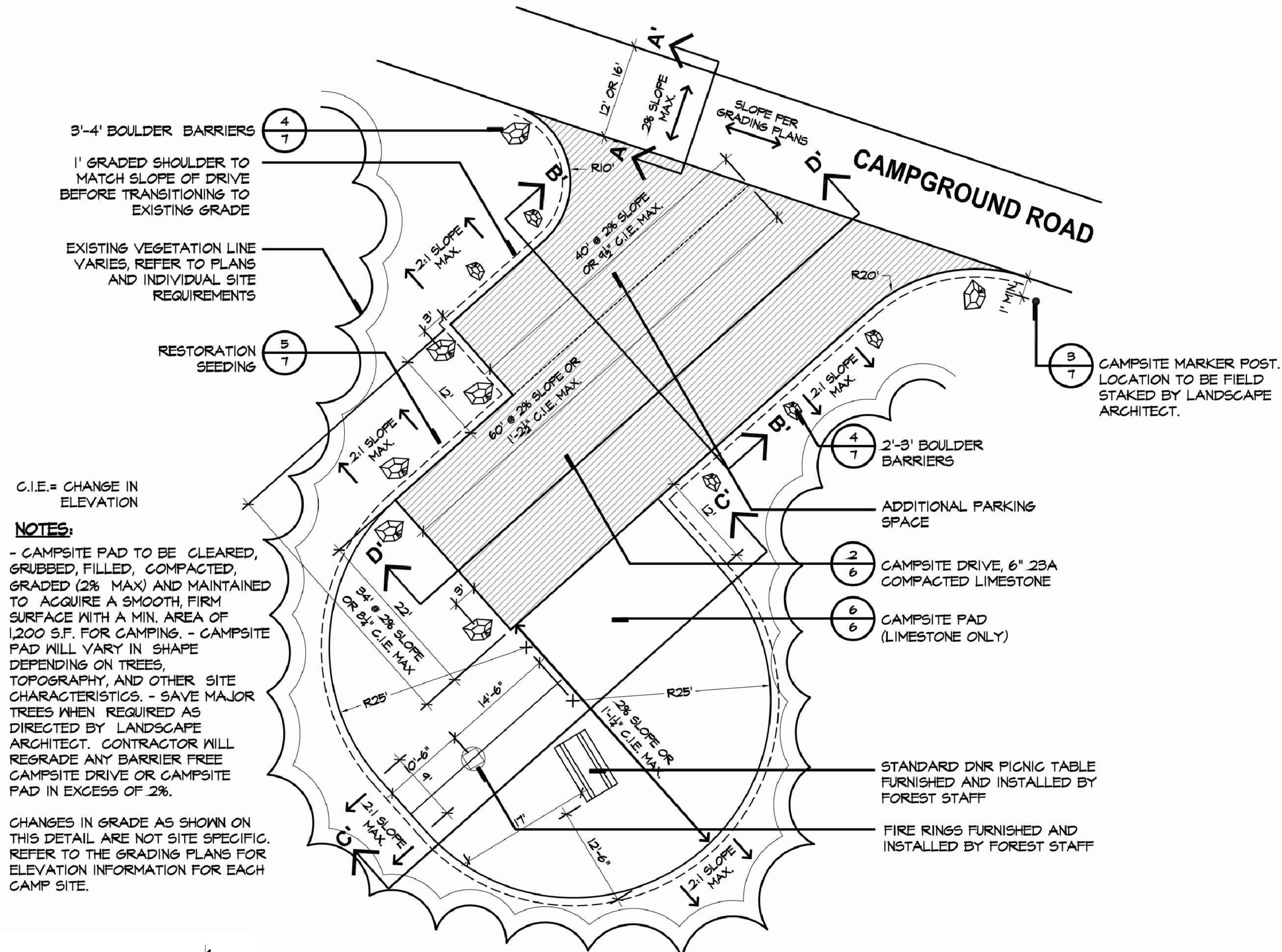


NOTE: SITE DEVELOPMENT PLAN SHOWS GRANT SCOPE ITEMS AND PROPOSED FUTURE DEVELOPMENT. ITEMS INCLUDED IN THE GRANT APPLICATION ARE SHOWN WITH BOX

ALL PROPOSED IMPROVEMENTS MEET ADA OR UNIVERSAL REQUIREMENTS.



- LINK TO STATE GAME AREA TRAILS
- RELOCATED TRAIL
- SANITATION STATION
- NEW ELECTRIC PAY / REGISTRATION STATION
- 16' WIDE TWO WAY CAMPGROUND ROADS
- NEW VAULT TOILET
- CAMPGROUND ROAD IMPROVEMENTS
- EQUESTRIAN CAMPSITE (16 - 41) - NO ELECTRICAL OR WATER
- EQUESTRIAN CAMPSITES WITH ELECTRICAL AND WATER
- MODERN ADA CAMPSITES
- NEW SHOWER / RESTROOM BUILDING
- EXISTING PICNIC SHELTER
- HITCHING POSTS
- LED SECURITY LIGHT
- EXISTING WATERING ACCESS TO SILVER CREEK
- LINK TO STATE GAME AREA TRAILS
- DAY RIDE AREA WITH 29 PULL- THROUGH PARKING SPACES
- NEW MAINTENANCE BUILDING
- NEW ELECTRIC PAY / REGISTRATION STATION
- NEW PARKING AREA