

COVID-19 Update

April 6, 2020



HEALTH
Department

Housekeeping

- ▶ If you have a question during the question portion, please state your name and then your question. We will repeat your question so we capture it correctly.
- ▶ If you have questions after the weekly call or want to be added to the weekly calls, email rrapp@allegancounty.org
- ▶ This PowerPoint is posted on our COVID-19 webpage on www.allegancounty.org/health

Follow up from last week:

- ▶ We had a question about the virus staying in aerosols for up to three hours.

Per CDC:

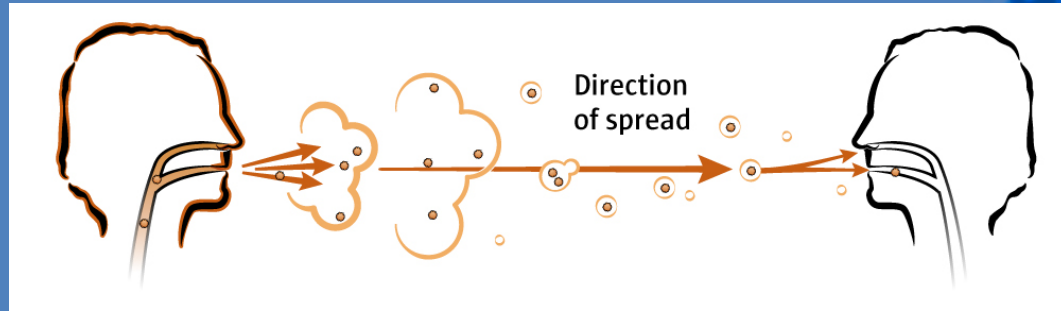
- ▶ The virus is thought to spread mainly from person-to-person.

- ▶ Between people who are in close contact with one another (within about 6 feet).

- ▶ Through respiratory droplets produced when an infected person coughs, sneezes or talks.

- ▶ These droplets can land in the mouths or noses of people who are nearby or possibly be inhaled into the lungs.

- ▶ Some recent studies have suggested that COVID-19 may be spread by people who are not showing symptoms.



Graphic retrieved from [Seattle Times](#), Credit to Emily Eng

Statistics: What's happening



HEALTH
Department

Globally* (4/5/20 at 10:00AM): 1,133,758 confirmed cases; 62,784 deaths

United States* (4/5/20):

- ▶ Total cases: 304,826
- ▶ Total deaths: 7,616
- ▶ Jurisdictions reporting cases: 55 (50 states, District of Columbia, Puerto Rico, Guam, Northern Marianas, and US Virgin Islands)

Michigan (4/5/20 3:00PM):

Total Confirmed Cases

15,718

Total COVID-19 Deaths

617

Allegan County (4/6/20 1:30P)

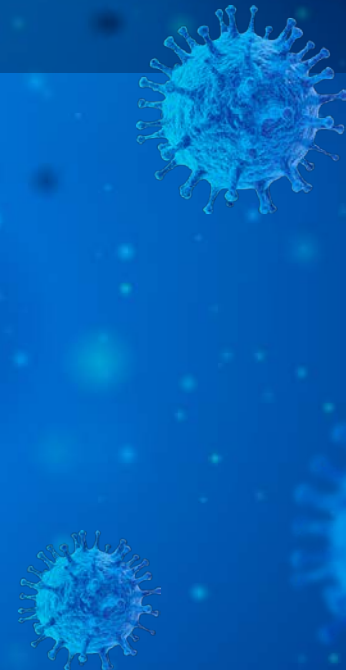
- ▶ Total PUI: 202
- ▶ Negative for COVID-19: 167
- ▶ Positive for COVID-19: 17
- ▶ Total tests pending: 12
- ▶ Tests not completed: 6
- ▶ Hospitalized PUI: 4
- ▶ Total Monitoring: 157
- ▶ Currently Monitoring: 28

As of today (from Governor Whitmer's Update):

- ▶ Nearly 80% of positive COVID-19 cases are in Wayne, Oakland, and Macomb counties.
 - ▶ Over 40% of MI total population lives in Metro Detroit.

In the next 24-48 hours, FEMA is sending Michigan:

- ▶ 300 ventilators
- ▶ 1.1M surgical masks
- ▶ 232,000 face shields
- ▶ 2M gloves



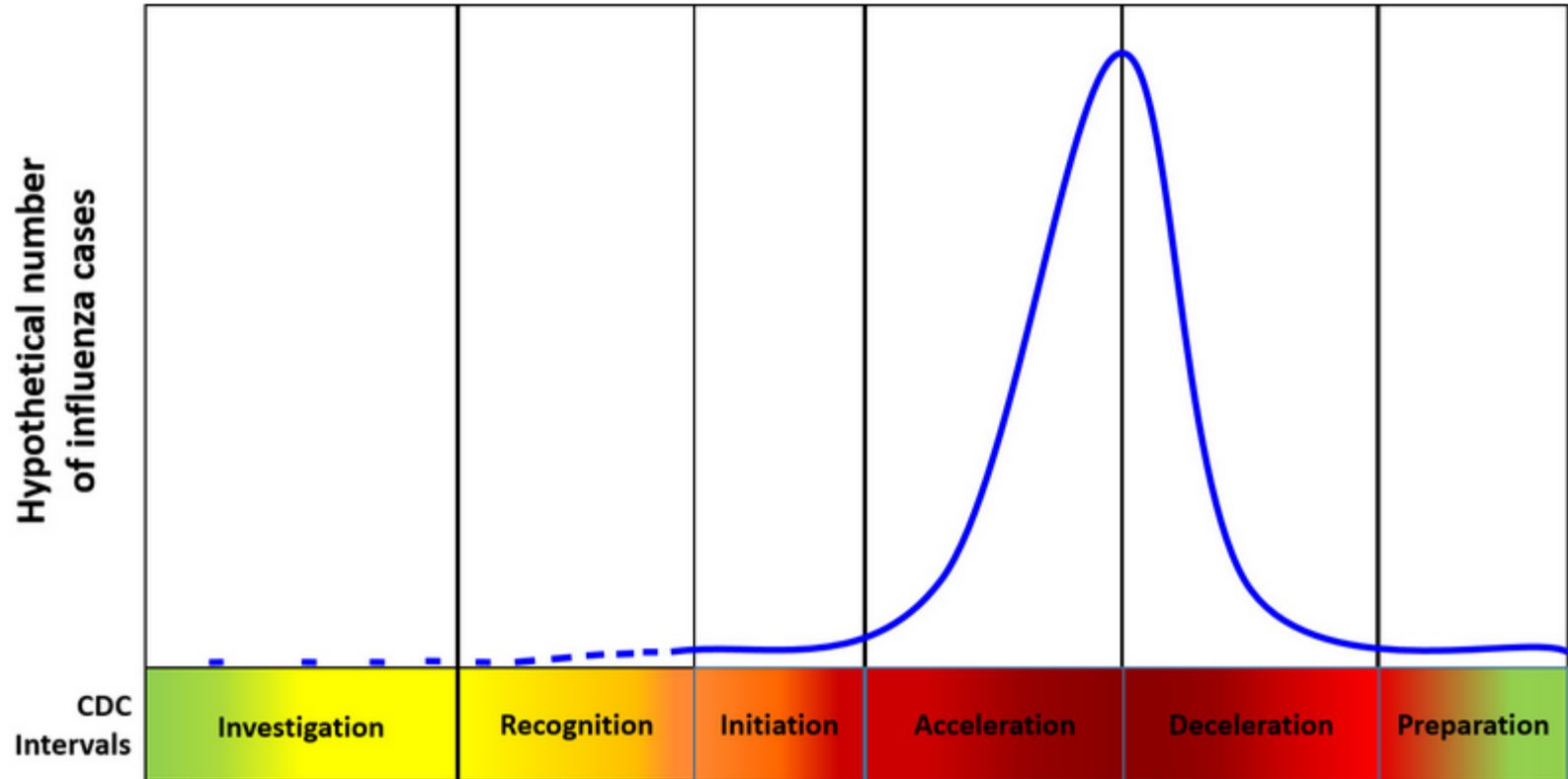
Local stages of outbreak

Burden on healthcare system

No cases detected	No burden on healthcare system
Limited individual cases	No burden on healthcare system
Initial community transmission	Initial burden on healthcare system
Large-scale community transmission	Moderate to high burden on healthcare system
Flattening the curve	Burden on health care system remains high
Containment of individual cases	Low burden on healthcare system
Ongoing suppression	No burden on healthcare

Figure 3. Description of the progression of the outbreak in local communities, as marked by number of cases and burden on the healthcare system

Figure 1. Preparedness and response framework for novel influenza A virus pandemics: CDC intervals



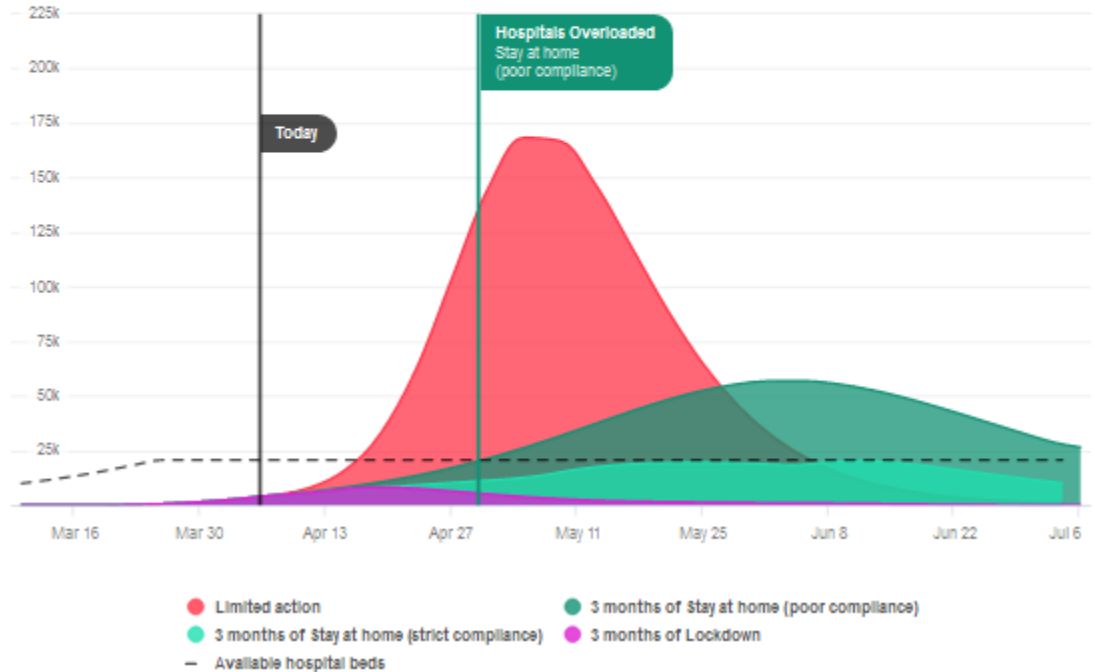
COVID Act Now Projections: Michigan



Keep staying at home in Michigan.

Avoiding hospital overload heavily depends on population density and public cooperation. Best and worst case scenarios are shown below, and we'll update our projections as soon as more data becomes available.

Projected hospitalizations
Michigan



COVID Act Now Projections: Allegan County

For full assumptions

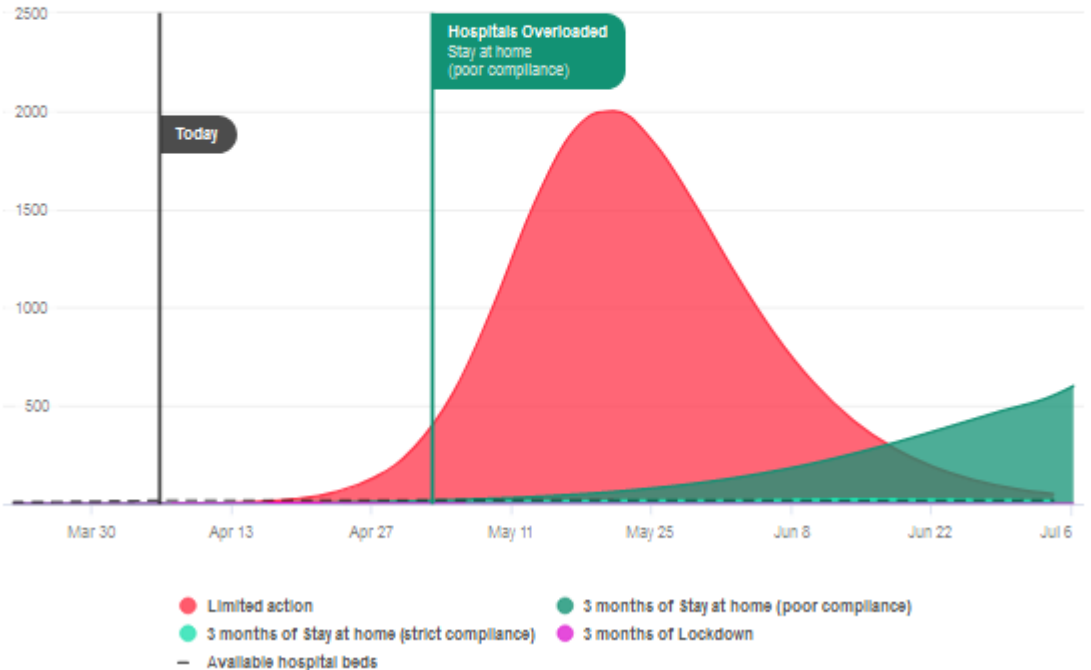


Keep staying at home in **Allegan County, Michigan.**

Avoiding hospital overload heavily depends on population density and public cooperation. Best and worst case scenarios are shown below, and we'll update our projections as soon as more data becomes available.

Projected hospitalizations

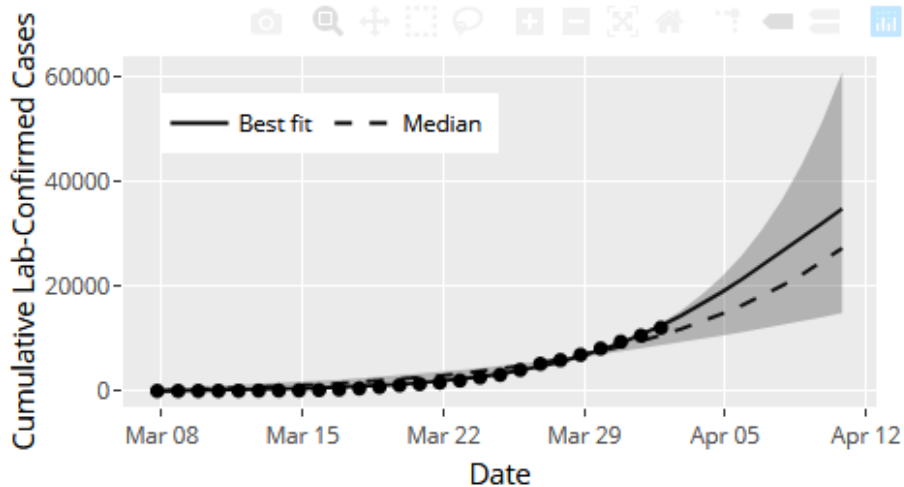
Allegan County, Michigan



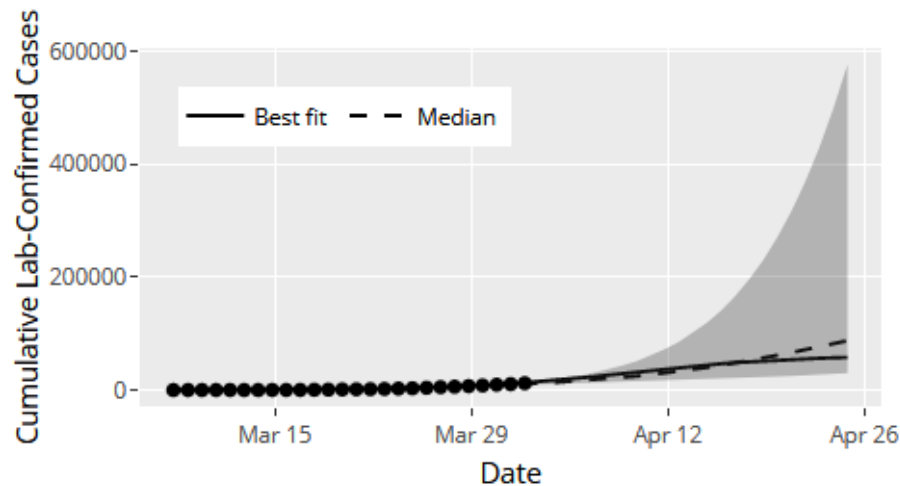
Michigan COVID-19 Modeling Dashboard

Developed by University of Michigan, School of Public Health
Continually update as more data becomes available.

1-week forecast of cumulative COVID-19 cases in Michigan



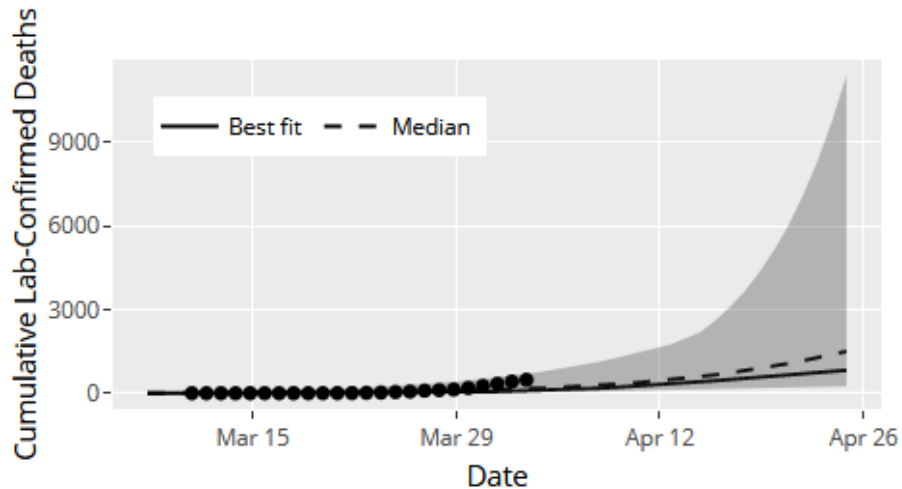
3-week forecast of cumulative COVID-19 cases in Michigan



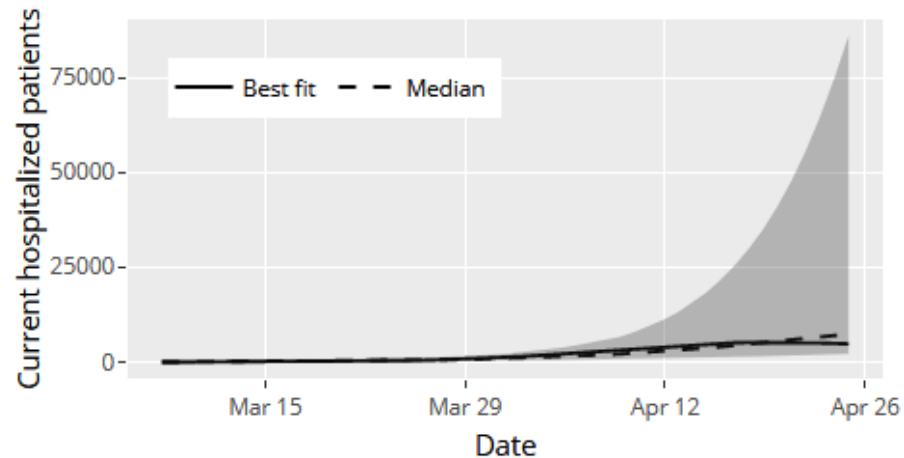
Michigan COVID-19 Modeling Dashboard

Developed by University of Michigan, School of Public Health
Continually update as more data becomes available.

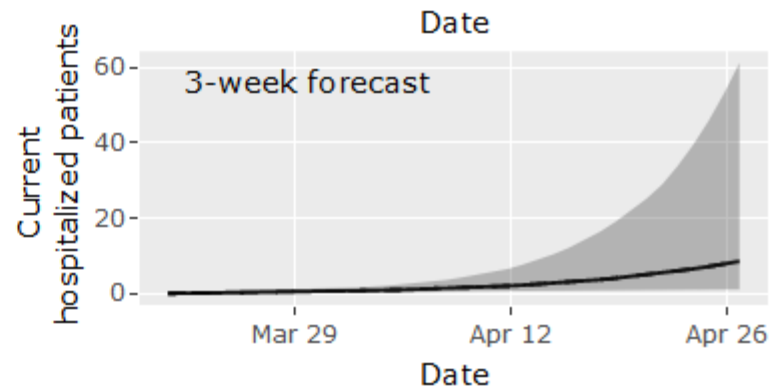
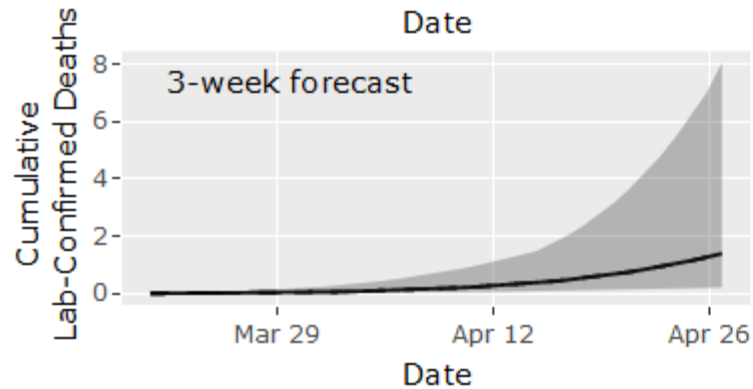
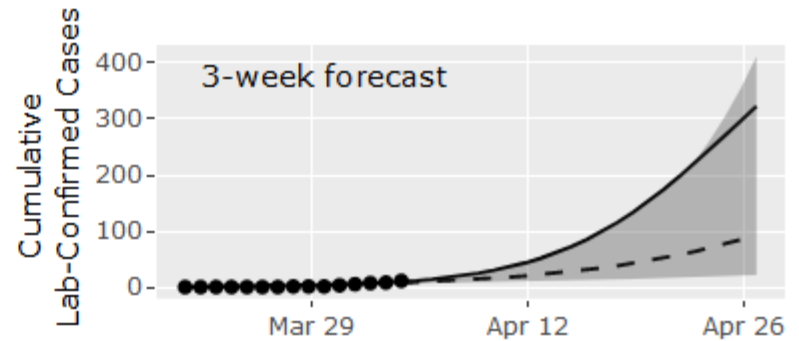
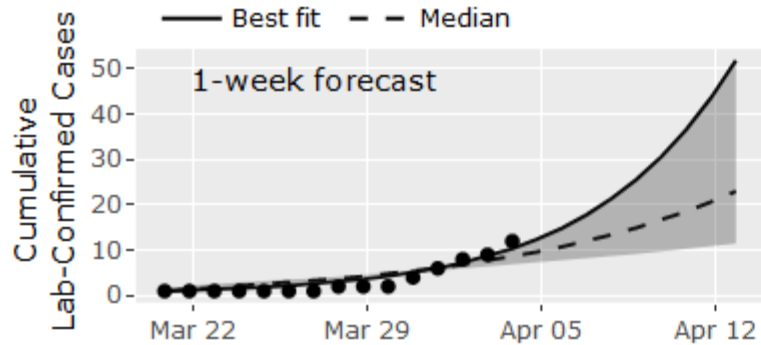
3-week forecast of **cumulative COVID-19 deaths** in Michigan



3-week forecast of COVID-19 **hospitalized patients** (i.e. beds needed)



Allegan County Modeling



COVID Community Vulnerability Map

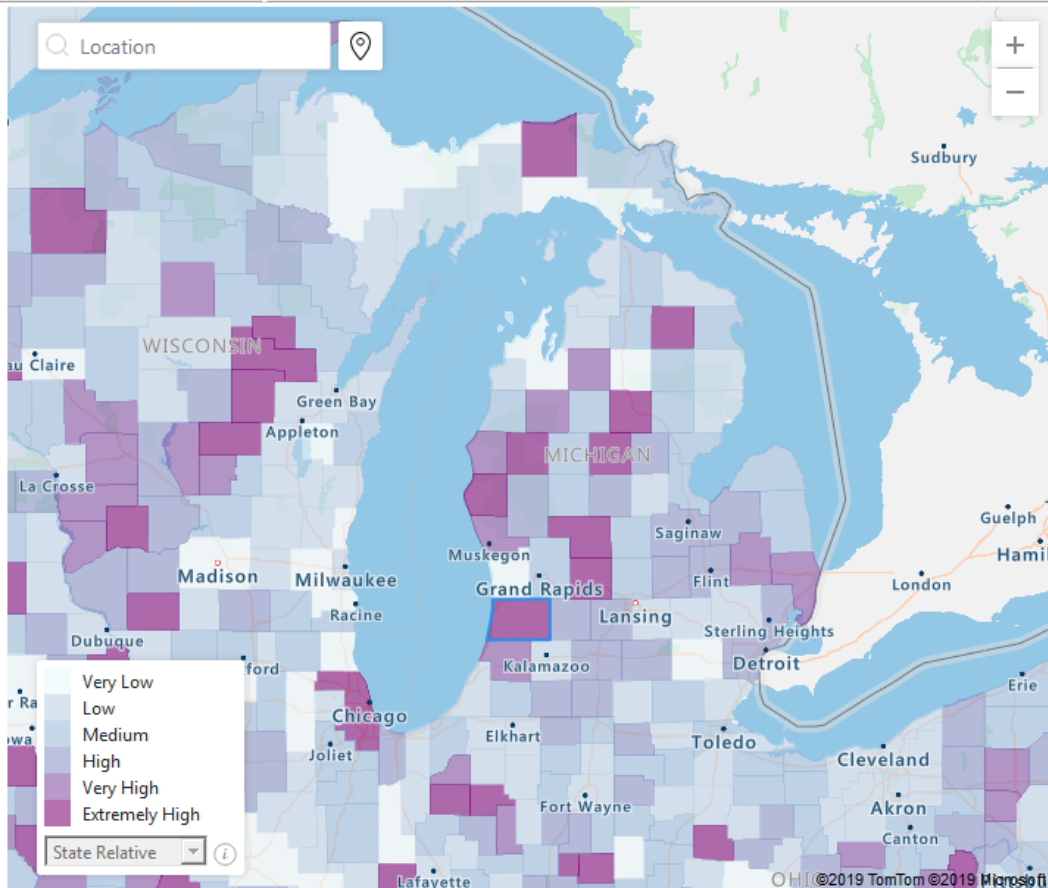
Identification of the populations at risk for severe outcomes once infected to inform resource planning, interventions, outreach and other community initiatives

This map allows you to search and drill down into communities to view populations most vulnerable for severe outcomes if infected with a COVID-like virus and the socioeconomic factors driving that risk.

How to use this map:

Select a geographic location or enter a reference point in the search bar to drill down to census block group level information.

Brought to you in partnership with Azure Maps



Allegan County

Census ID 26005

High density (135.0 ppl / mi²)

Community Vulnerability

Extremely High

Top Socioeconomic Influencers

- Low frequency of prolonged commute (60+ min)
- Low transportation availability
- Low industrial/commercial job density
- Low unemployment rate
- Low commercial retail availability

Prioritization of PPE

Prioritization strategies should only be used when adequate PPE supplies are not available.

Considerations for determining how to allocate a limited supply of PPE:

- ▶ During periods of limited availability, it may be necessary to prioritize allocation of PPE.
- ▶ When supplies are less limited, allocations should be as broad as possible to mitigate spread of disease.
- ▶ People who are at highest risk of exposure or at highest risk of spreading the disease to a vulnerable population should be prioritized for allocation within each facility.
- ▶ Regional PPE allocation should be tailored based on the most current epidemiological data.

Homemade Mask Use

- ▶ CDC recommends wearing cloth face coverings in public settings where other social distancing measures are difficult to maintain (e.g., grocery stores and pharmacies) **especially** in areas of significant community-based transmission.
- ▶ It is critical to emphasize:
 - ▶ Maintain 6-foot social distancing remains important to slowing the spread of the virus.
 - ▶ CDC is additionally advising the use of simple cloth face coverings to slow the spread of the virus and help people who may have the virus and do not know it from transmitting it to others.
- ▶ How to make your own mask

Should cloth face coverings be washed or otherwise cleaned regularly? How regularly?

Yes. They should be routinely washed depending on the frequency of use.

How does one safely sterilize/clean a cloth face covering?

A washing machine should suffice in properly washing a face covering.

How does one safely remove a used cloth face covering?

Individuals should be careful not to touch their eyes, nose, and mouth when removing their face covering and wash hands immediately after removing.



Executive Order 2020-38

- ▶ Temporary extensions of certain FOIA deadlines to facilitate COVID-19 emergency response efforts

- ▶ As memorialized by Michigan's Freedom of Information Act ("FOIA"), 1976 PA 442, as amended, MCL 15.231 et seq., it remains the public policy of this state—and a priority of my administration—that Michiganders have access to "full and complete information regarding the affairs of government and the official acts of those who represent them as public officials and public employees," so that they "may fully participate in the democratic process." MCL 15.231(2). To balance this core priority with the steep and urgent demands posed by the COVID-19 pandemic, it is reasonable and necessary to provide limited and temporary extensions of certain FOIA deadlines, so that Michiganders may remain informed and involved in their government during this unprecedented crisis without unduly compromising the health and safety of this state and its residents.

- ▶ Review full order [here](#)

Executive Order 2020-37

- ▶ Temporary restrictions on entry into health care facilities, residential care facilities, congregate care facilities, and juvenile justice facilities – Rescission of Executive Order 2020-7
- ▶ Executive Order 2020-7 imposed such restrictions. This order clarifies those restrictions and extends their duration, as they remain reasonable and necessary to protect the health and safety of this state and its residents from the COVID-19 pandemic
- ▶ Review full order [here](#)

Executive Order 2020-36

- ▶ Protecting workers who stay home, stay safe when they or their close contacts are sick
 - ▶ Slowing the aggressively persistent spread of this destructive virus, however, requires more. Individuals permitted to go to work under Executive Order 2020-21 must stay home when they or their close contacts are sick—and they must not be punished for doing so. Accordingly, it is reasonable and necessary to provide certain protections against workplace discrimination to such individuals, to ensure they can do what is now most needed from them to protect the health and safety of this state and its residents.
 - ▶ Review full order [here](#)

Executive Order 2020-35

- ▶ Provision of K-12 education during the remainder of the 2019-2020 school year
 - ▶ Accordingly, to mitigate the spread of COVID-19, protect the health and safety of this state and its residents, and ensure the ongoing encouragement of education enshrined in this state's constitution, it is reasonable and necessary to temporarily suspend in-person instruction of K-12 students and provide limited and temporary relief from certain restrictions and requirements so that K-12 education may continue by the best alternative means possible.
 - ▶ Review full order [here](#)

Executive Order 2020-34

▶ Temporary restrictions on veterinary services—Rescission of Executive Order 2020-32

- ▶ To suppress the transmission of COVID-19, it is crucial to limit in-person contact and services to the greatest extent possible. Veterinary services are no exception; while their focus is the care of animals, the provision of these services in-person nonetheless risks spreading the virus from person to person. Furthermore, the provision of veterinary services entails the use of health care resources, such as personal protective equipment, that are in immediate and critically high demand as a result of this pandemic. Accordingly, to mitigate the spread of COVID-19, protect the public health, provide essential protections to vulnerable Michiganders, and ensure the availability of critical health care resources, it is reasonable and necessary to impose temporary restrictions on the in-person provision of veterinary services.

- ▶ Review full order [here](#)

Executive Order 2020-33

- ▶ Expanded emergency and disaster declaration
- ▶ Executive Order 2020-4 is rescinded and replaced. All previous orders that rested on Executive Order 2020-4 now rest on this order
- ▶ Review full order [here](#)

Executive Order 2020-32

▶ Temporary restrictions on non-essential veterinary services

▶ To mitigate the spread of COVID-19, protect the public health, provide essential protections to vulnerable Michiganders, and ensure the availability of critical health care resources, it is reasonable and necessary to impose temporary restrictions on the in-person provision of non-essential veterinary services.

▶ Review full order [here](#)

Executive Order 2020-31

- ▶ Temporary relief from standard vapor pressure restrictions on gasoline sales
 - ▶ To that end, it is reasonable and necessary to provide limited and temporary relief from certain vapor pressure requirements applicable to the sale of gasoline in Michigan. As result of changed behavior in response to COVID-19, there is currently an unexpected oversupply of higher volatility winter-blend gasoline, which cannot be sold as of April 1, 2020 under standard vapor pressure requirements.
- ▶ Review full order [here](#)



CISA
CYBER+INFRASTRUCTURE

Attorney General: Know your Rights

Prevention



HEALTH
Department

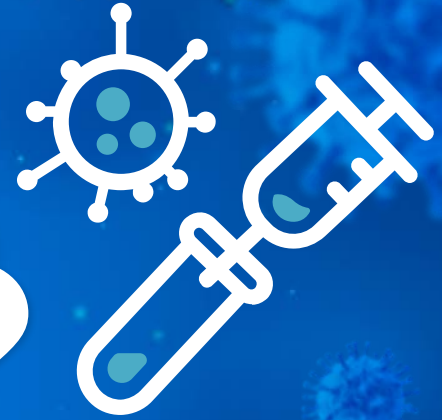
- ▶ Currently, there is no vaccine for COVID-19
- ▶ The best way to prevent infection is to avoid exposure to the virus
- ▶ Take everyday preventive actions to help prevent the spread of respiratory viruses
 - ▶ [FDA approved list of cleaning agents](#)
- ▶ Wash your hands often
- ▶ Social distancing
- ▶ Shelter at home if you are non-essential
- ▶ Consider wearing a homemade mask when out in public

Contact Randy Rapp, Health Department Liaison for COVID-19 Incident, if you need to be added to the list, are requesting materials made, or have further questions.

**rrapp@allegancounty.org
(269) 673-5411**

**ACHD Hotline: (269) 686-4546
Email: COVID-19@allegancounty.org**

Questions?



What can we do to support you?



HEALTH
Department