

# COVID-19 Update

May 4, 2020



HEALTH  
Department

# Housekeeping

- ▶ Questions are at the end of the call. Please use the chat feature or state your name and question
- ▶ If you have questions after the weekly call or want to be added to the weekly calls, email [rrapp@allegancounty.org](mailto:rrapp@allegancounty.org)
- ▶ This PowerPoint is posted on our COVID-19 webpage on [www.allegancounty.org/health](http://www.allegancounty.org/health) after the call today



# Statistics: What's happening



HEALTH  
Department

Globally\* (5/3/20 at 10:00AM): 3,349,786 confirmed cases; 238,628 deaths

## United States\* (5/3/20):

- ▶ Total cases: 1,122,486
- ▶ Total deaths: 65,735

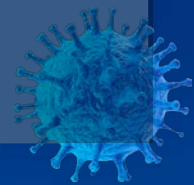
## Michigan (5/3/20 at 3:00pm)

Total Confirmed Cases

**43,754**

Total COVID-19 Deaths

**4,049**



# COVID-19

## Allegan County Statistics:

*Data reported as of 5/4 at 2:00 PM*

Total PUI: 1,319

Negative Tests for COVID-19: 1,190

Positive Tests for COVID-19: 116

Total Tests Pending: 7

Tests not Completed: 6

Total Monitoring: 415

Currently Monitoring: 166

**Zip codes with laboratory-confirmed positive cases of COVID-19:**

**49010, 49056, 49070 49078, 49080, 49090, 49315, 49323, 49328, 49344, 49348, 49406, 49408, 49419, 49423, 49450, 49453**

**NOTE: Residents should continue to behave as though the virus may be present when they are in public places in the community and take all recommended prevention measures. Many people with COVID-19 experience only mild symptoms. This is particularly true at the early stages of the disease. It is therefore possible to catch COVID-19 from someone who has, for example, just a mild cough and does not feel ill.**

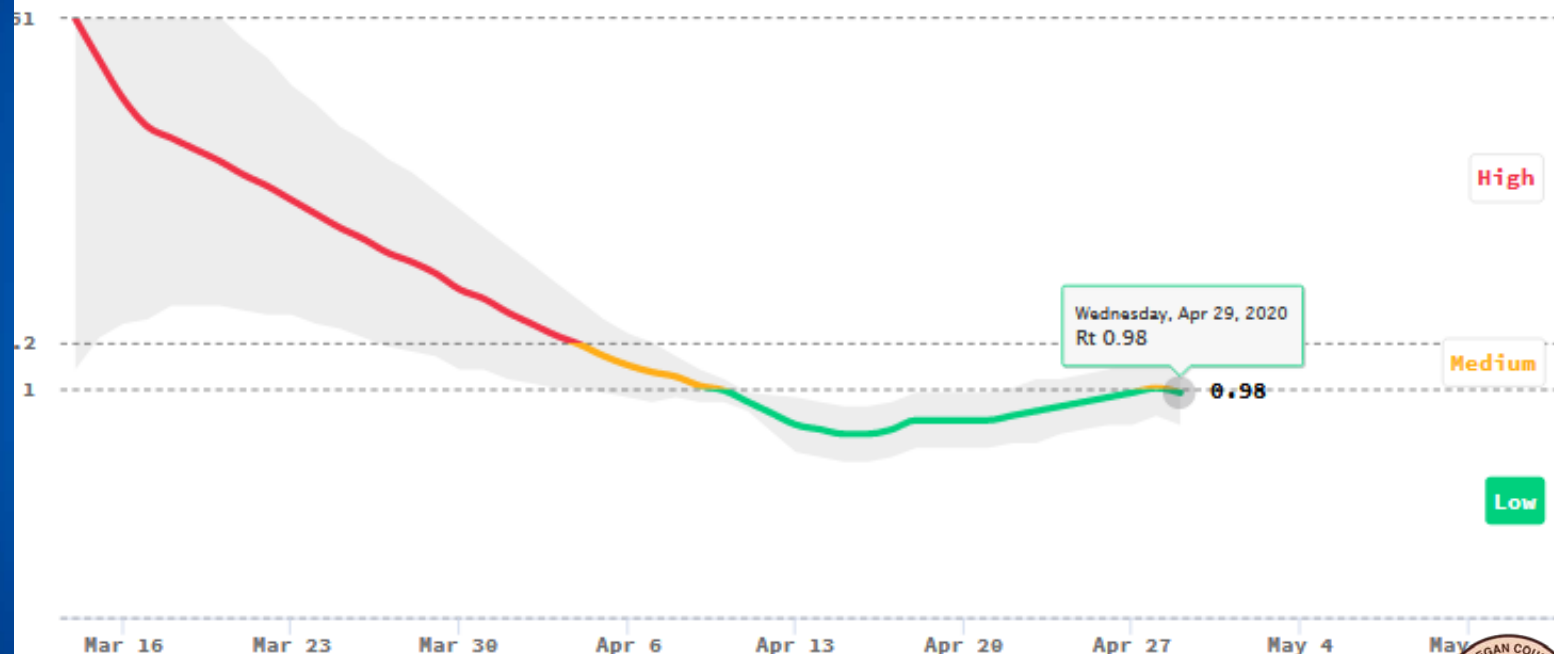


**HEALTH  
Department**

# Infection growth rate

MICHIGAN

On average, each person in Michigan with COVID is infecting 0.98 other people. Because each person is infecting less than one other person, the total number of cases in Michigan is shrinking.



Last updated 5/1/2020. Most experts recommend an infection rate of less than 1.0 before reopening. [Learn more about how we calculate infection growth rate here.](#)

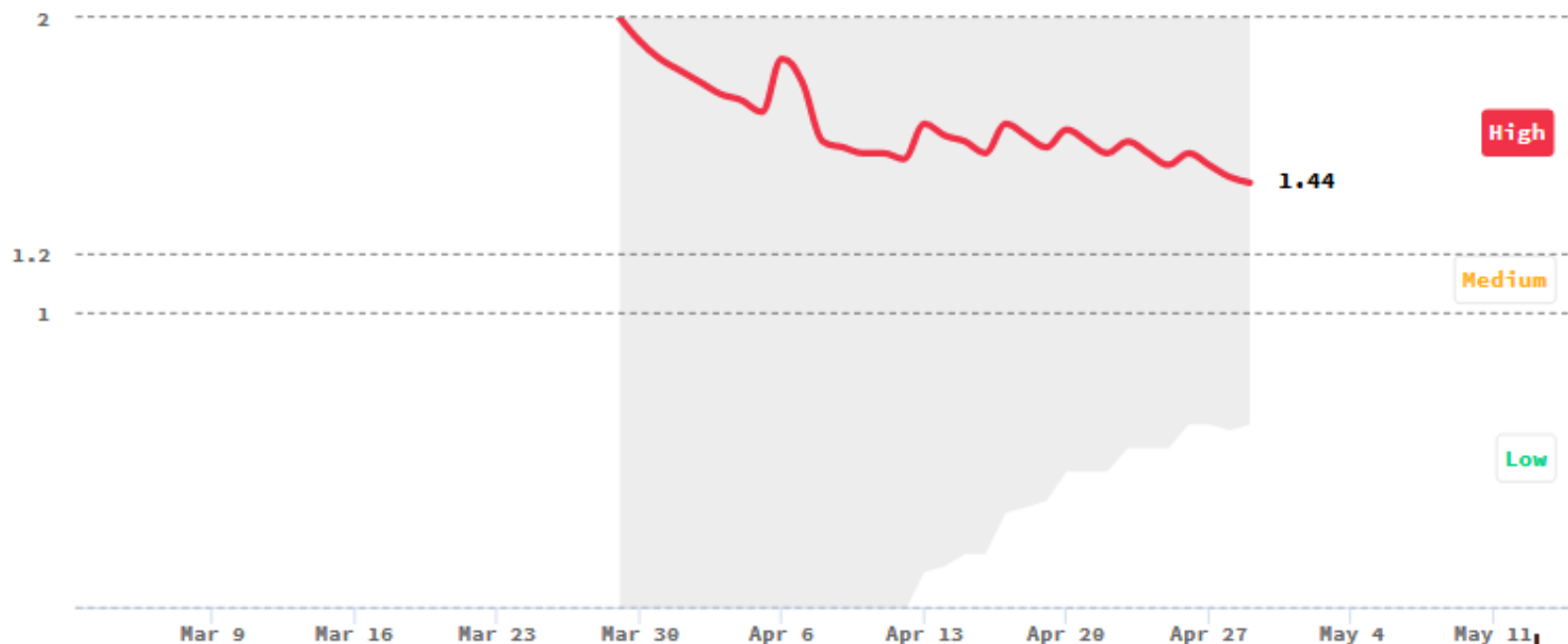


HEALTH  
Department

# Infection growth rate

ALLEGAN COUNTY, MICHIGAN

On average, each person in Allegan County, Michigan with COVID is infecting 1.44 other people. As such, the total number of cases in Allegan County, Michigan is growing exponentially.

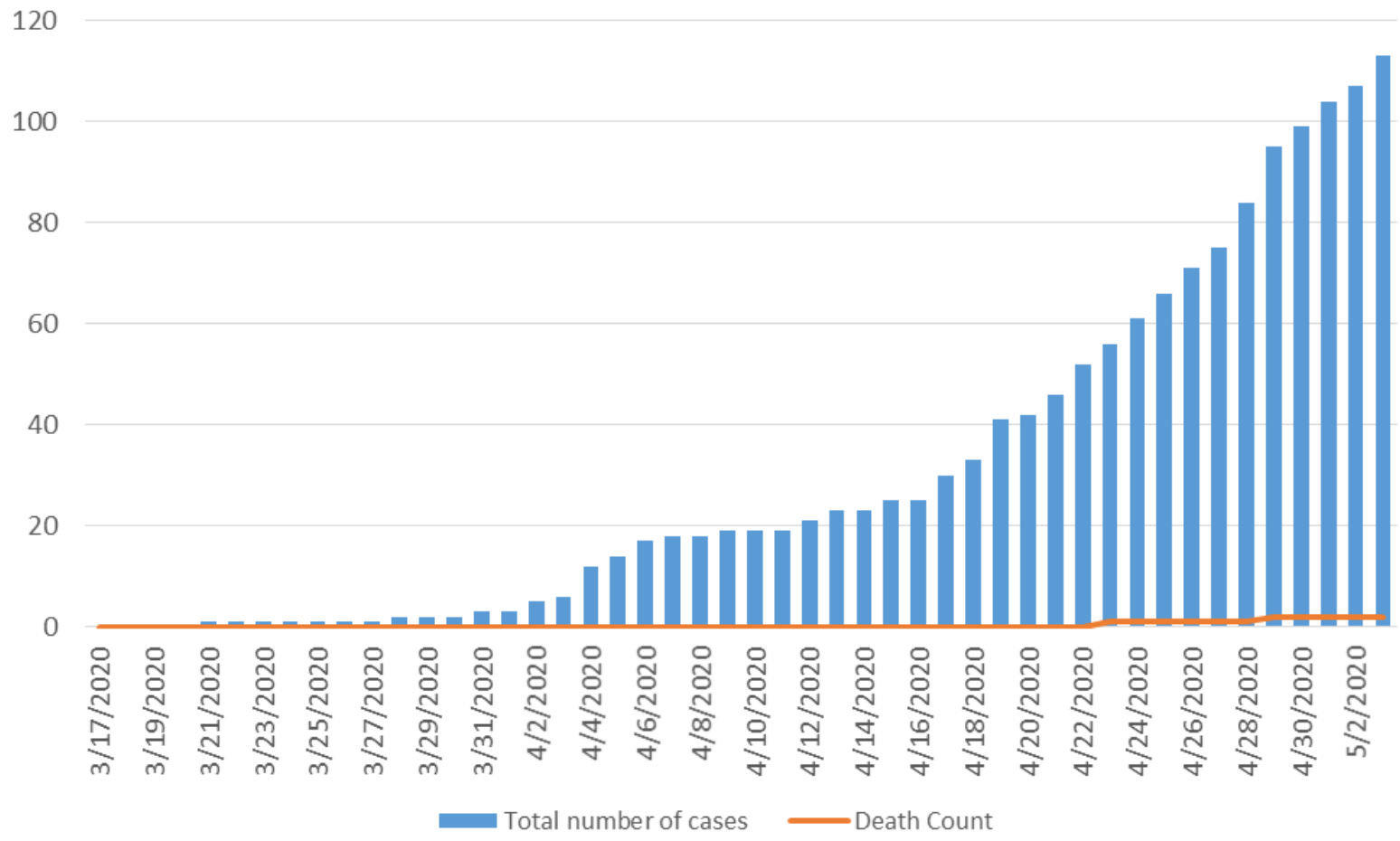


Last updated 5/1/2020. Most experts recommend an infection rate of less than 1.0 before reopening. [Learn more about how we calculate infection growth rate here.](#)

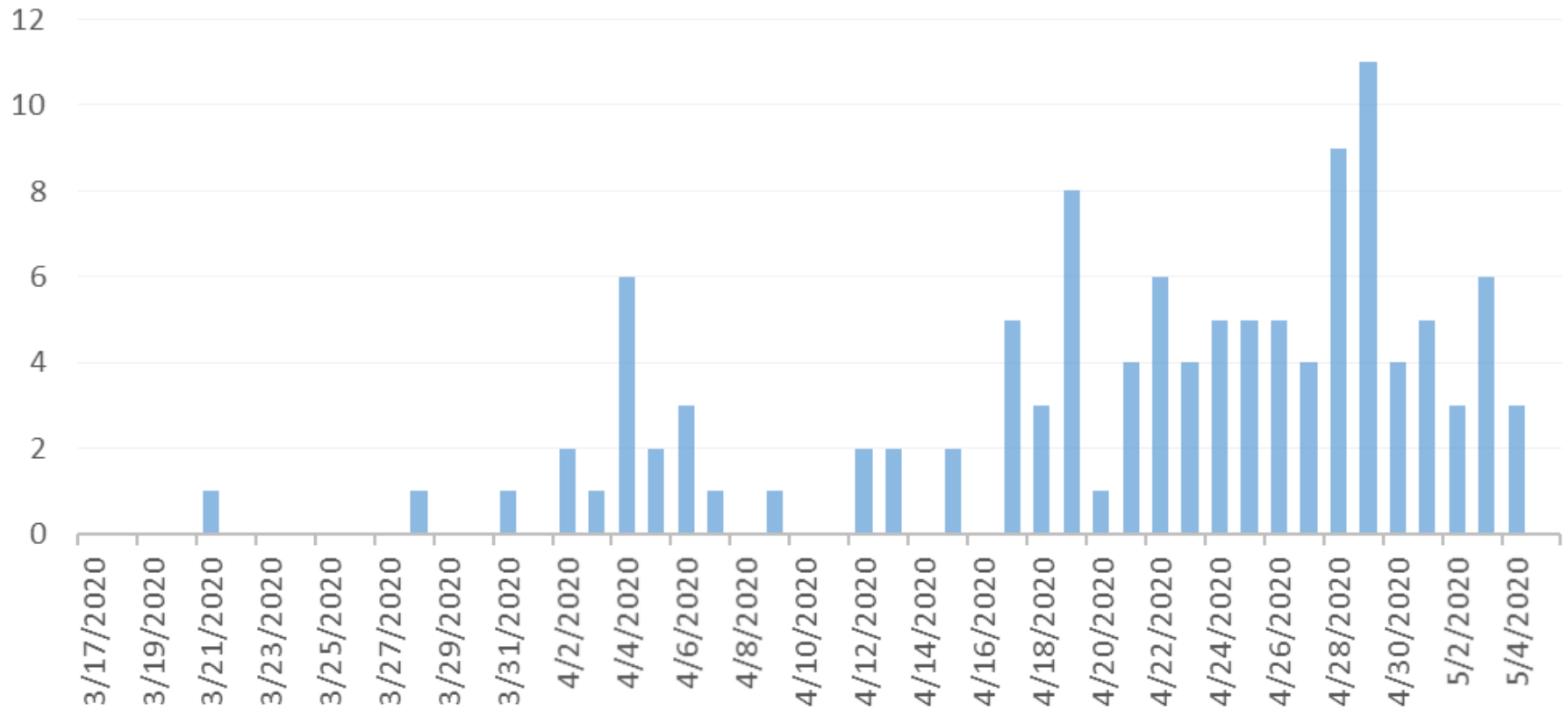


HEALTH  
Department

# Total Cases and Deaths



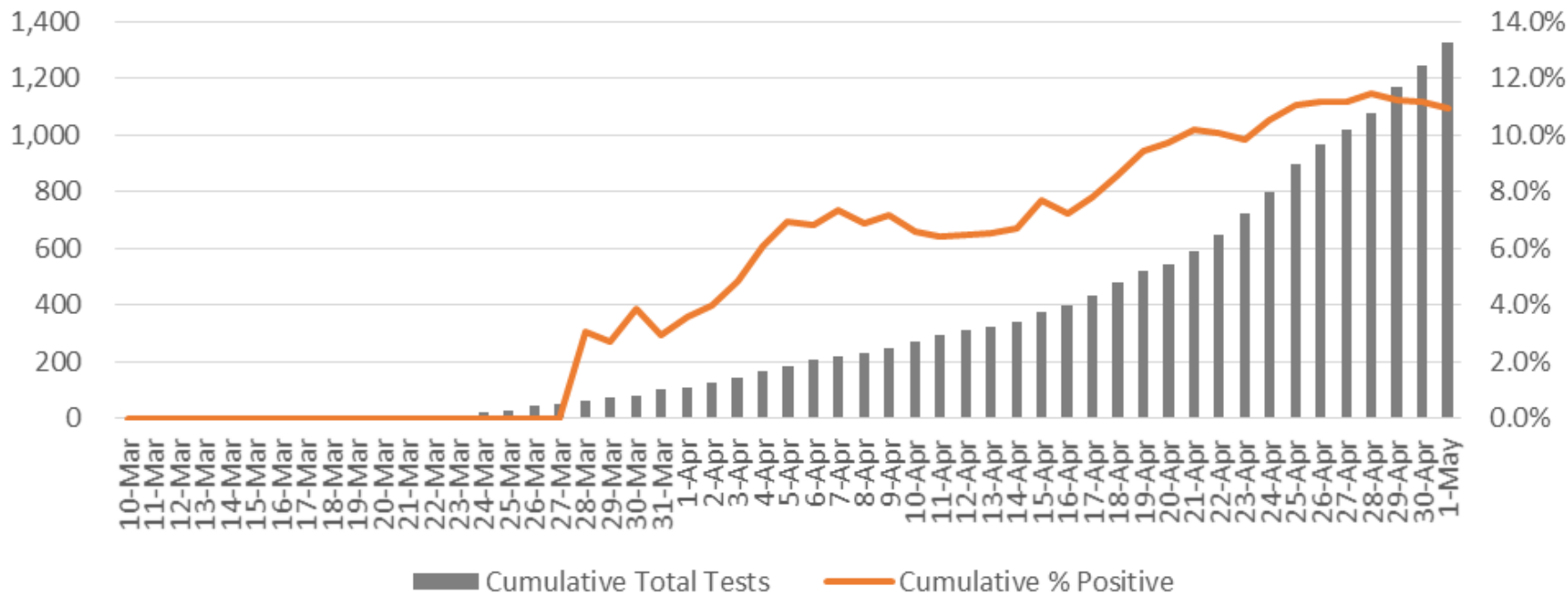
# New Cases per Day





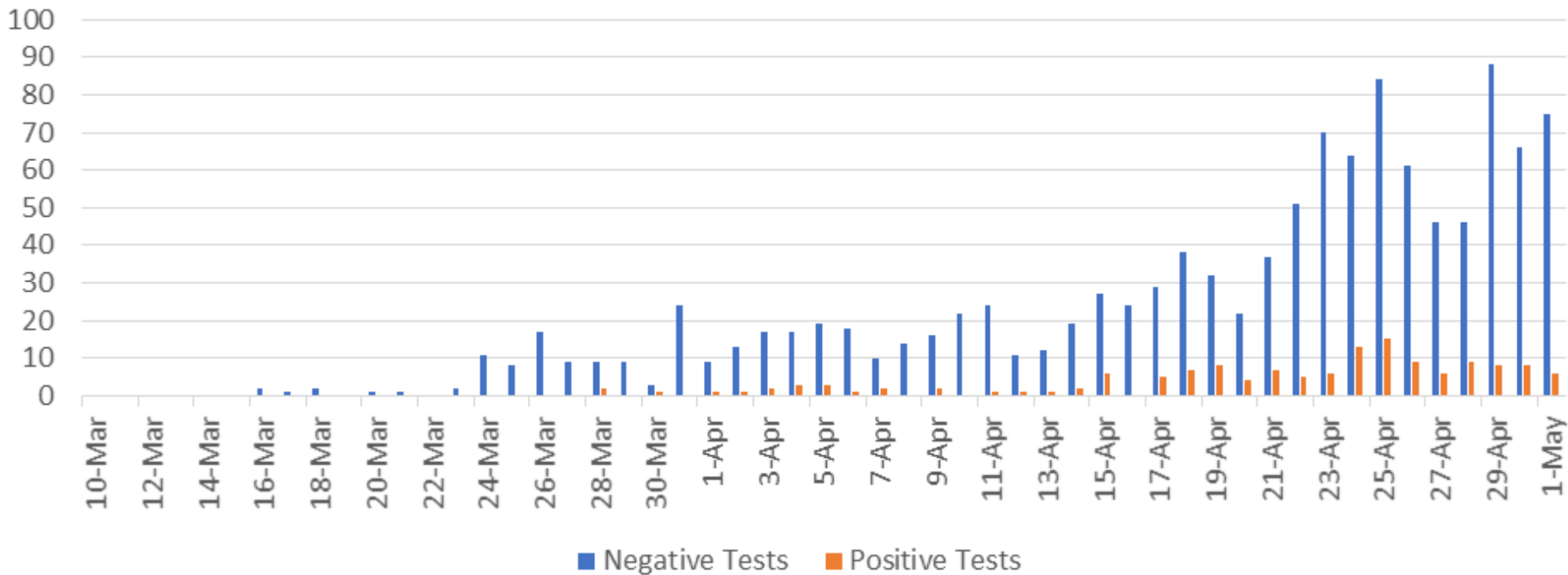
# Allegan County Data, as of 5/1/20

## Cumulative Tests and Cumulative % Positive



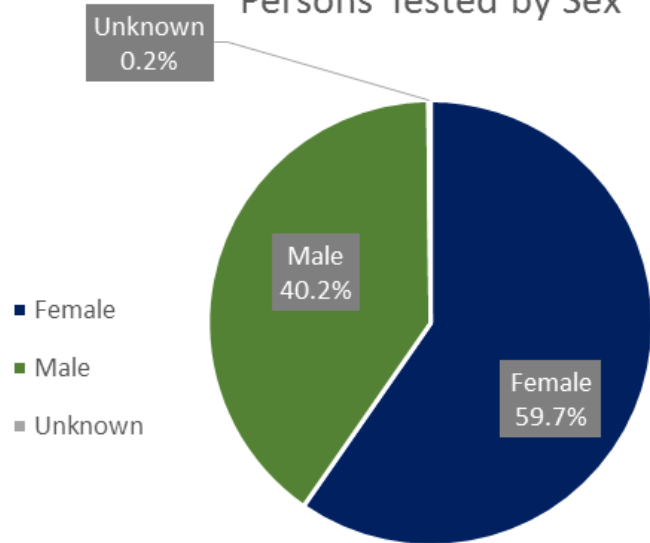
# Allegan County Data, as of 5/1/20

## Positive and Negative Tests by Message Date

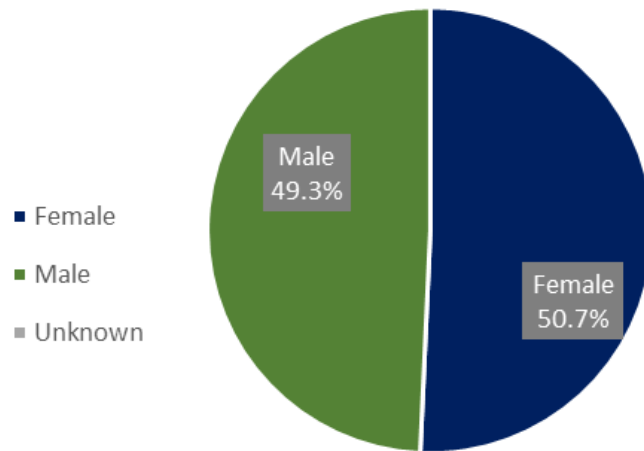


# Allegan County Data, as of 5/1/20

Persons Tested by Sex

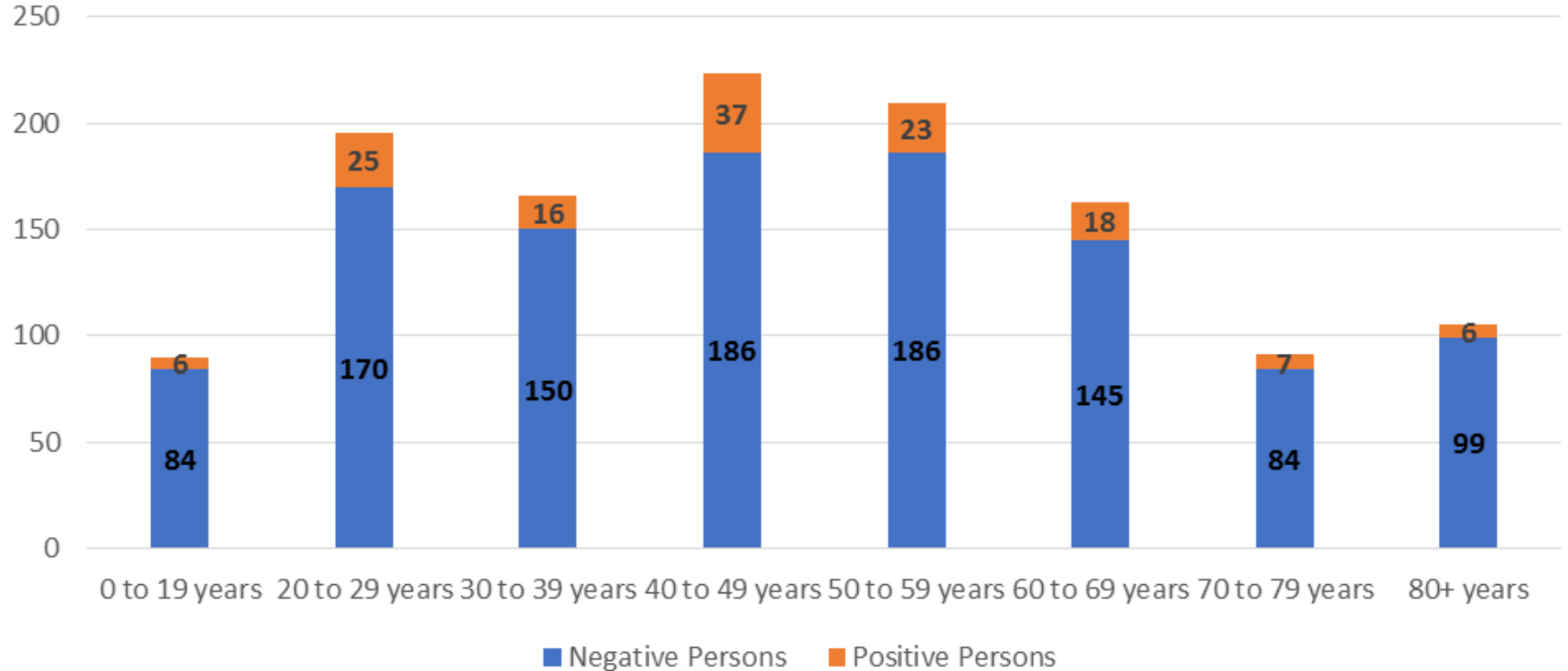


Positive Cases by Sex



# Allegan County Data, as of 5/1/2020

## Persons Tested by Age Group



# Executive Order 2020-70



## SAFE WORK PLAYBOOK

An interactive guide for COVID-19 Pandemic  
Preparedness and Response



## Guidance on Preparing Workplaces for COVID-19

# Lakeshore Advantage: Ready to help Businesses reopen



## Making a Plan

Resources to develop a COVID-19 preparedness & response plan

[More...](#)



## Cleaning & Disinfecting

Resources to clean and disinfect your workplace

[More...](#)



## Social Distancing in the Workplace

How to maintain workplace social distancing guidelines

[More...](#)



## Protecting your Employees

From PPE to contact tracing, resources to keep employees safe

[More...](#)



## HR & Legal

Frequently asked questions answered

[More...](#)



## Templates & Printables

Workplace posters and graphics for employee education

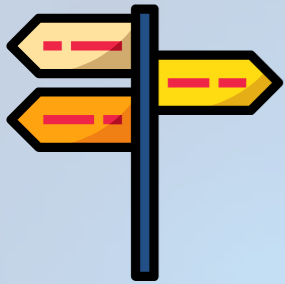
[More...](#)



# Testing Locations

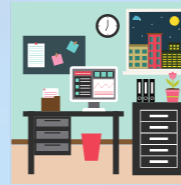


Use [test locator](#) on State's COVID-19 websites



## Guidance for Reopening ✓

Industry Specific Guidance

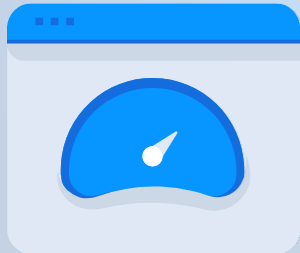


TAKE SURVEY



## Congregate Setting Survey ✓

Will be done weekly



## Dashboards

Internal

External



# FIRST RESPONDERS: UNKNOWN POSITIVE COVID-19 PATIENT EXPOSURE

## DID I USE PROPER PPE?

YES



NO

You mitigated your risk

You have become high risk

### WHAT SHOULD I DO?

Self Monitor for symptoms.  
No mandated quarantine at  
this time

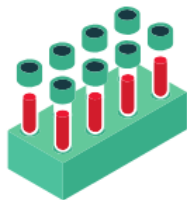


### WHAT SHOULD I DO?

You must quarantine for 14  
days. Self-monitor for  
symptoms .

### TESTING

If any symptoms develop,  
testing is recommended.



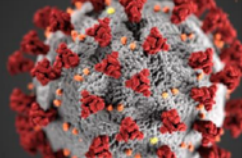
### TESTING

Testing is recommended between  
days 5-9 on quarantine. This is when  
your viral load should increase  
enough to produce a positive result

# COVID-19

## Notification and Investigation Process

updated April 29, 2020



### WE ARE HERE FOR YOU

As the number of confirmed cases of COVID-19 climb in Michigan and in Allegan County, the likelihood that you will know someone who tests positive increases each day. This can be scary and stressful because for many of us, we don't yet know how COVID-19 will impact our families, friends, colleagues, and communities.

### COMMUNITY SPREAD IN ALLEGAN COUNTY

Since there is evidence of COVID-19 community spread, **every location should be considered a potential risk.** Treat every person as though they are infected because the virus can go undetected in many people. People of any age, even those who do not have any symptoms, could be a carrier of the new coronavirus that causes COVID-19.

Residents should continue to:

- Follow the "Stay Home, Stay Safe" order
- Keep 6 feet from others
- Frequently wash hands
- Sanitize frequently touched surfaces
- Wear homemade mask or cloth face covering when out in public places



### WHAT HAPPENS WHEN SOMEONE I KNOW TESTS PCR LAB-CONFIRMED POSITIVE OR IS DIAGNOSED PROBABLE FOR COVID-19?

# 1

**Allegan County Health Department is notified of a resident that tested positive for COVID-19.** People that are being tested should contact the Health Department so the investigation/self-isolation and contact tracing/self-quarantine can begin as soon as possible.

Employees should also reach out to their direct supervisor and the Human Resources Department notifying them that they are being tested and if they receive a positive test result.

# 2

**Allegan County Health Department contacts the person under investigation (PUI) and works with them to identify people they have had contact with and review any other recommendations or next steps.** The Clinical Team will determine who is considered a close contact requiring self-quarantine. The onset of symptoms, as well as the nature, proximity and duration of contact with the PUI are all taken into consideration in determining the close contact list.

### WHAT IS A CLOSE CONTACT?

Close contact generally means being in close contact (within 6 feet) for 10 or more minutes, living with or caring for a person or being in direct contact with secretions (sneezed or coughed on).



# 3

**If the PUI identifies a possible exposure risk within a worksite, the Health Department will contact the employer to collaborate** regarding identifying the close contacts, determining their County of residence and making notification of their need for self-quarantine and next steps.

# 4

**The Health Department will communicate with people considered a close contact so they can self-quarantine and monitor themselves for any symptoms.** This means a health department will contact you if you have been identified as a close contact to a person being investigated or testing positive for COVID-19.

# 5

**In the event of a potential workplace exposure, the Health Department will work with the organization's human resources department and reach out to staff to provide additional support and resources.**

### RIGHT OF PRIVACY

**We understand there is a lot of anxiety and uncertainty around this situation.** Please respect others' rights to privacy during the COVID-19 pandemic. If a colleague, friend, family member, or anyone else informs you of a COVID-19 diagnosis, please do not share this with others. The Health Department has a rigorous process in place to identify cases and close contacts as soon as possible.



CALL THE ALLEGAN COUNTY HEALTH DEPARTMENT HOTLINE AT  
**269-686-4546** OR EMAIL **COVID-19@ALLEGANCOUNTY.ORG**



HEALTH  
Department

Information around this outbreak is changing rapidly.  
Follow the Allegan County Health Department on Facebook @AlleganCountyHD.  
The latest information is available at [Michigan.gov/Coronavirus](https://Michigan.gov/Coronavirus) and [CDC.gov/Coronavirus](https://CDC.gov/Coronavirus).

# COVID-19 Antibody Testing

*What we know:*



Manufacturers are selling tests in some areas. No tests are "Validated" for diagnosis of COVID-19.



We don't know if it means immunity to COVID-19. Testing positive for antibodies could mean you have had past coronavirus infections or "colds."



Antibody tests are currently more useful to investigate illness among populations as a whole, rather than to diagnose an individual.



Clinical decisions cannot yet be based on antibody testing alone.



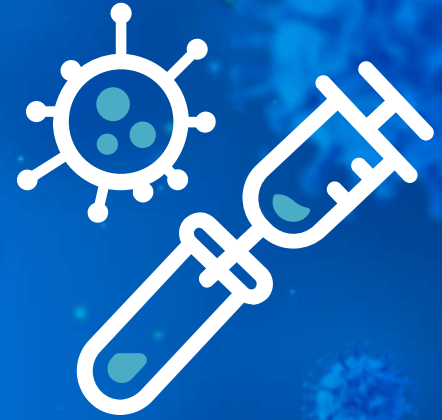
Contact **Randy Rapp**, Health Department Liaison for **COVID-19 Incident**, if you need to be added to the list, are requesting materials made, or have further questions.

[rrapp@allegancounty.org](mailto:rrapp@allegancounty.org)  
(269) 673-5411

ACHD Hotline: (269) 686-4546  
Email: [COVID-19@allegancounty.org](mailto:COVID-19@allegancounty.org)

# Questions/ Feedback?

What can we do to support you?



HEALTH  
Department