

COVID-19 Update

May 11, 2020



HEALTH
Department

Housekeeping

- ▶ Questions are at the end of the call. Please use the chat feature or state your name and question
- ▶ If you have questions after the weekly call or want to be added to the weekly calls, email rrapp@allegancounty.org
- ▶ This PowerPoint is posted on our COVID-19 webpage on www.allegancounty.org/health after the call today

Statistics: What's happening



HEALTH
Department

Globally* (5/10/20 at 10:00AM):
3,917,366 confirmed cases
274,361 deaths

United States* (5/10/20):

- ▶ Total cases: 1,300,696
- ▶ Total deaths: 78,771

Michigan (5/11/20 at 3:00pm)

Total Confirmed Cases

47,552

Total COVID-19 Deaths

4,584

Allegan County (5/11/20 at 1:40p)

Total Cases: 158

Negative Tests: 1,803

Probable Cases: 27

Total Hospitalized: 21

Total Monitored: 449

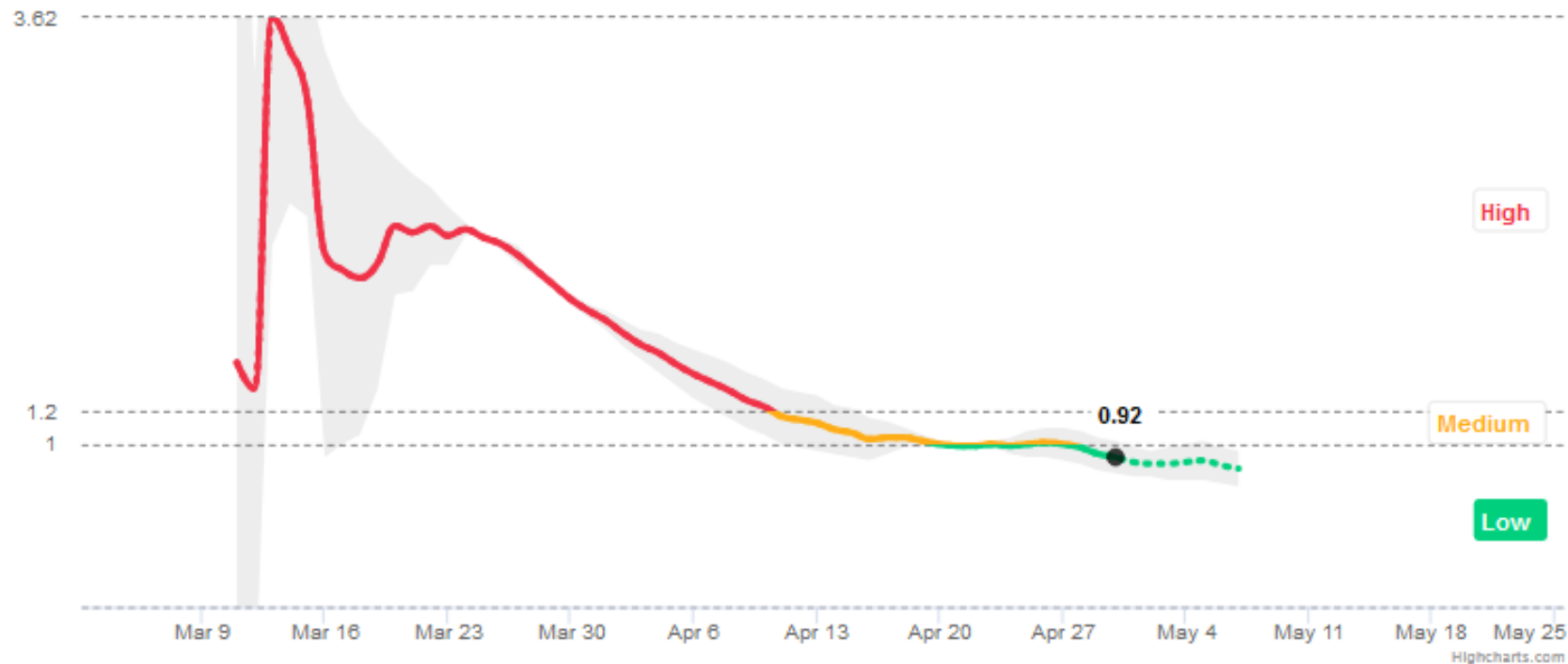
Percent Positivity Rate: 8.05%

Infection growth rate

MICHIGAN

On average, each person in Michigan with COVID is infecting 0.92 other people.

Because each person is infecting less than one other person, the total number of cases in Michigan is shrinking.

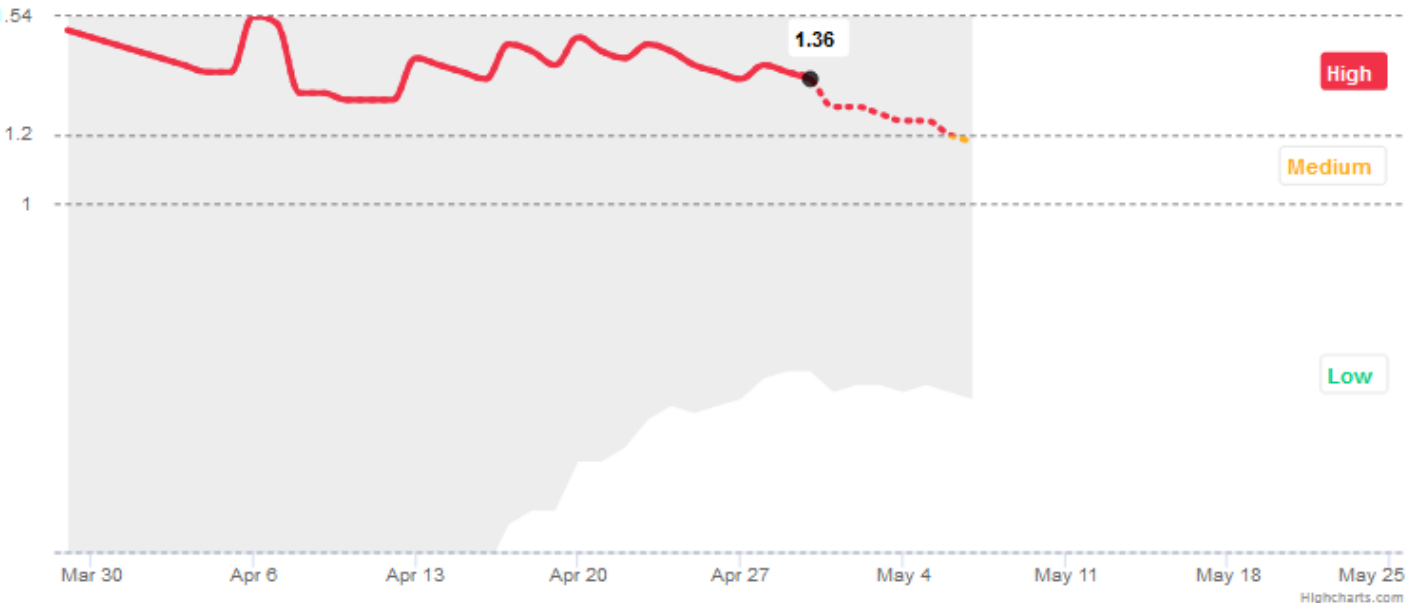


Last updated 5/10/2020. Most experts recommend an infection rate of less than 1.0 for two

Infection growth rate

ALLEGAN COUNTY, MICHIGAN

On average, each person in Allegan County, Michigan with COVID is infecting 1.36 other people. As such, the total number of cases in Allegan County, Michigan is growing exponentially.

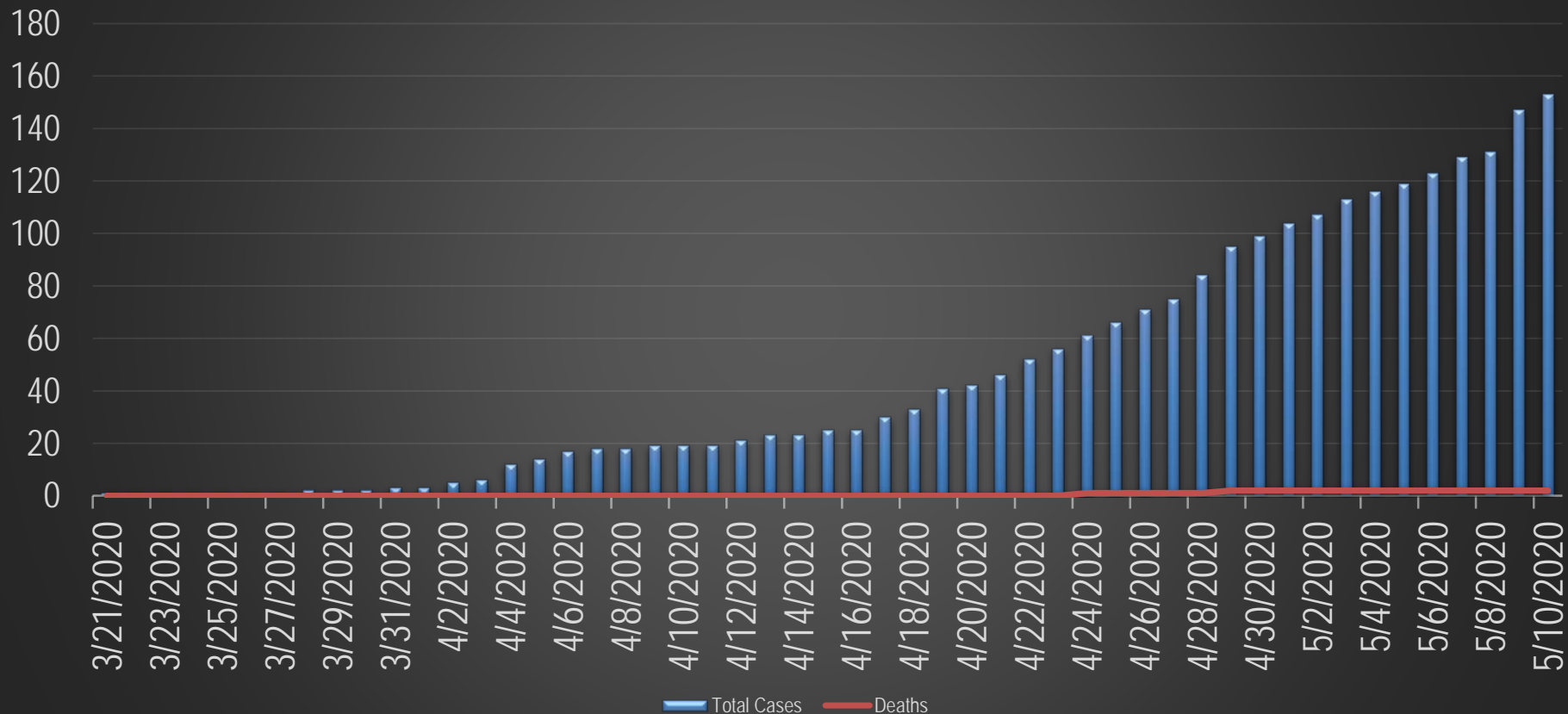


Last updated 5/10/2020. Most experts recommend an infection rate of less than 1.0 for two weeks before reopening. [Learn more about how we calculate infection growth rate here.](#)

Note: As the country continues to learn more about COVID-19, this data will be updated and modified. What is important to note here is the Infection Growth rate is still above 1.0, therefore the spread is continuing

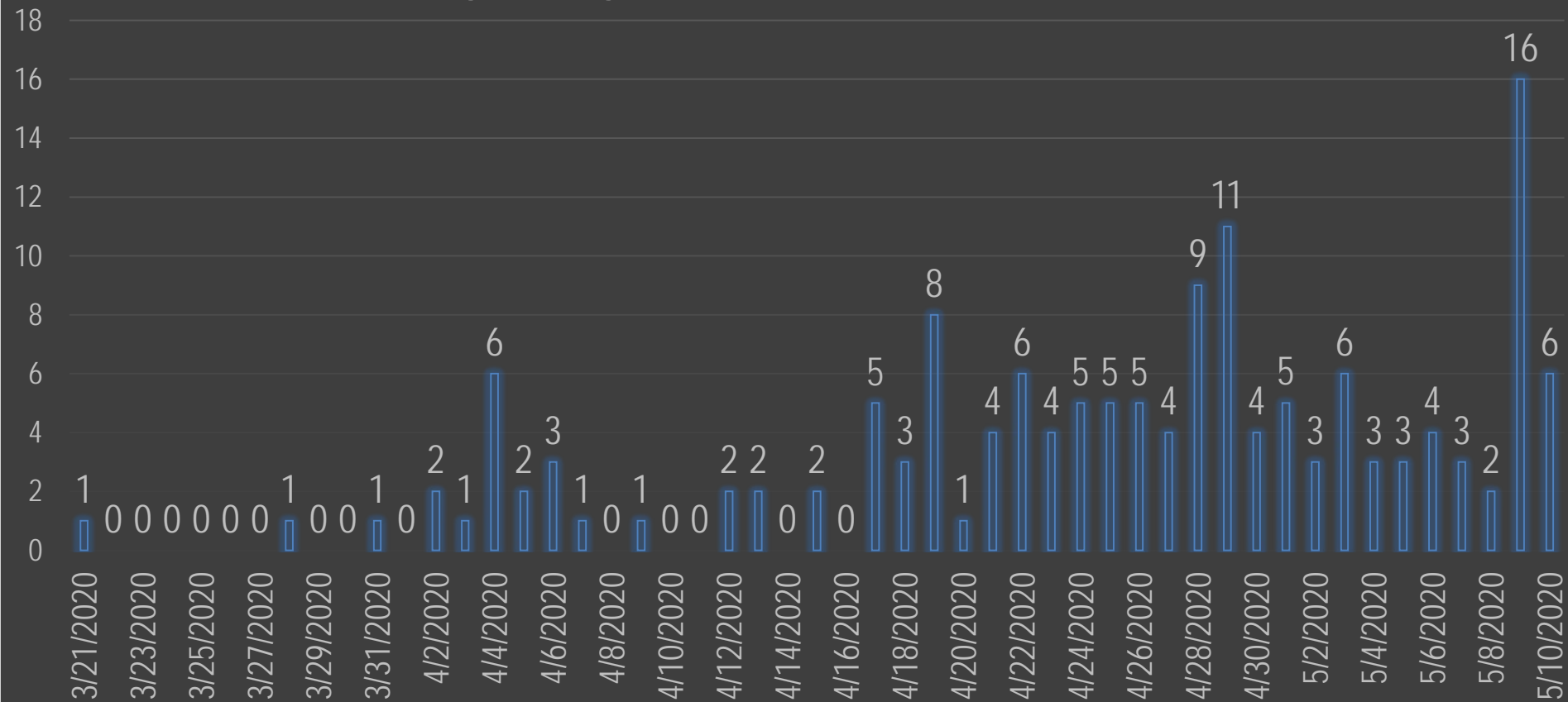
More information on Projections and Modeling: <https://blog.covidactnow.org/inference-projections-for-states/>

Total Cases and Deaths



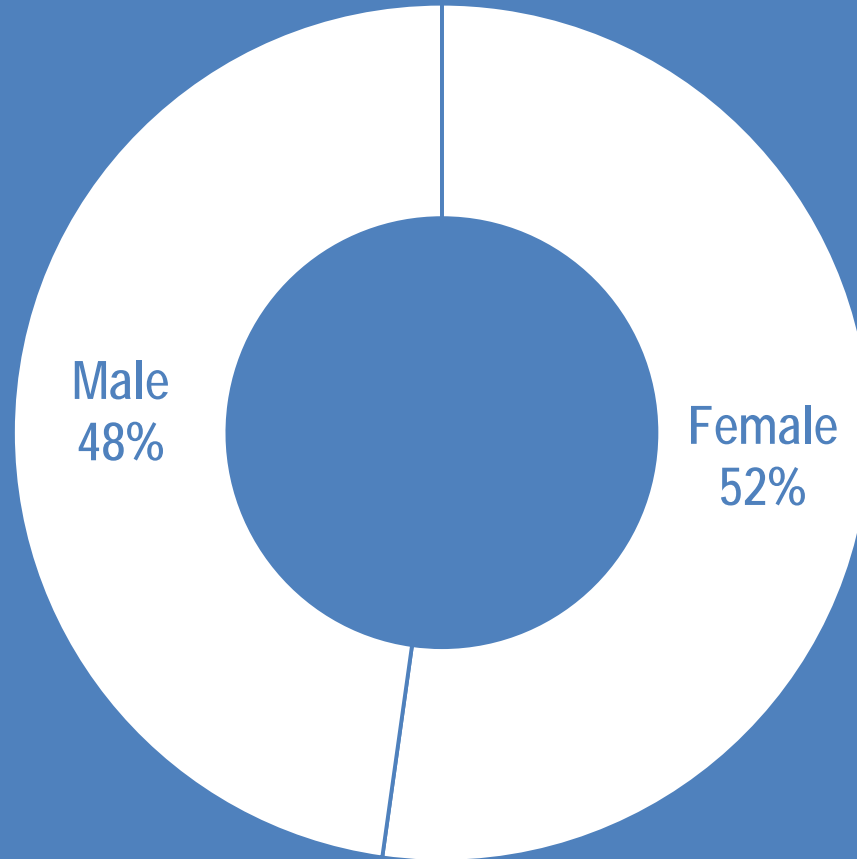
Data as of 5/10/2020 at 1:30pm. Source: Michigan Data Surveillance System

New Cases by Day

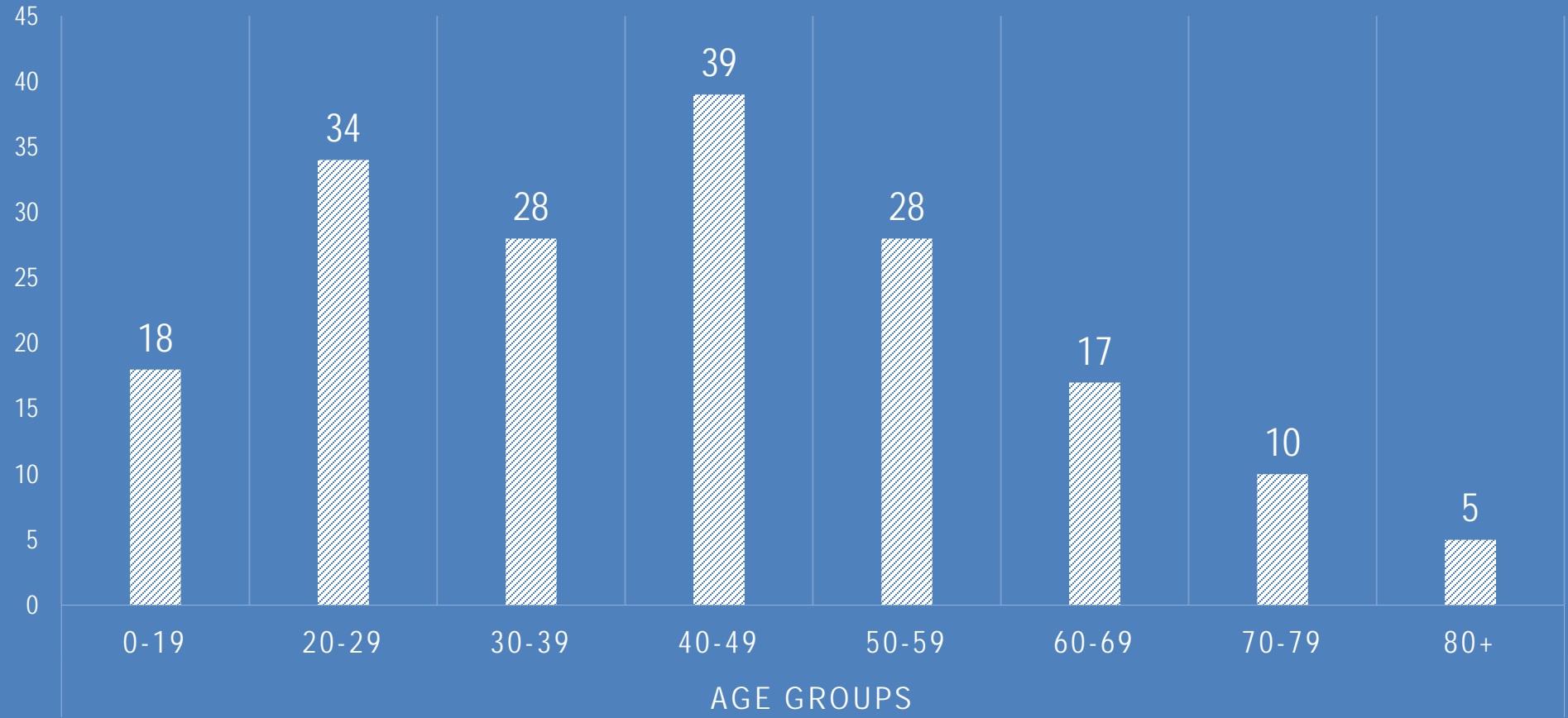


Data as of 5/10/2020 at 1:30pm. Source: Michigan Data Surveillance System

CASES BY SEX

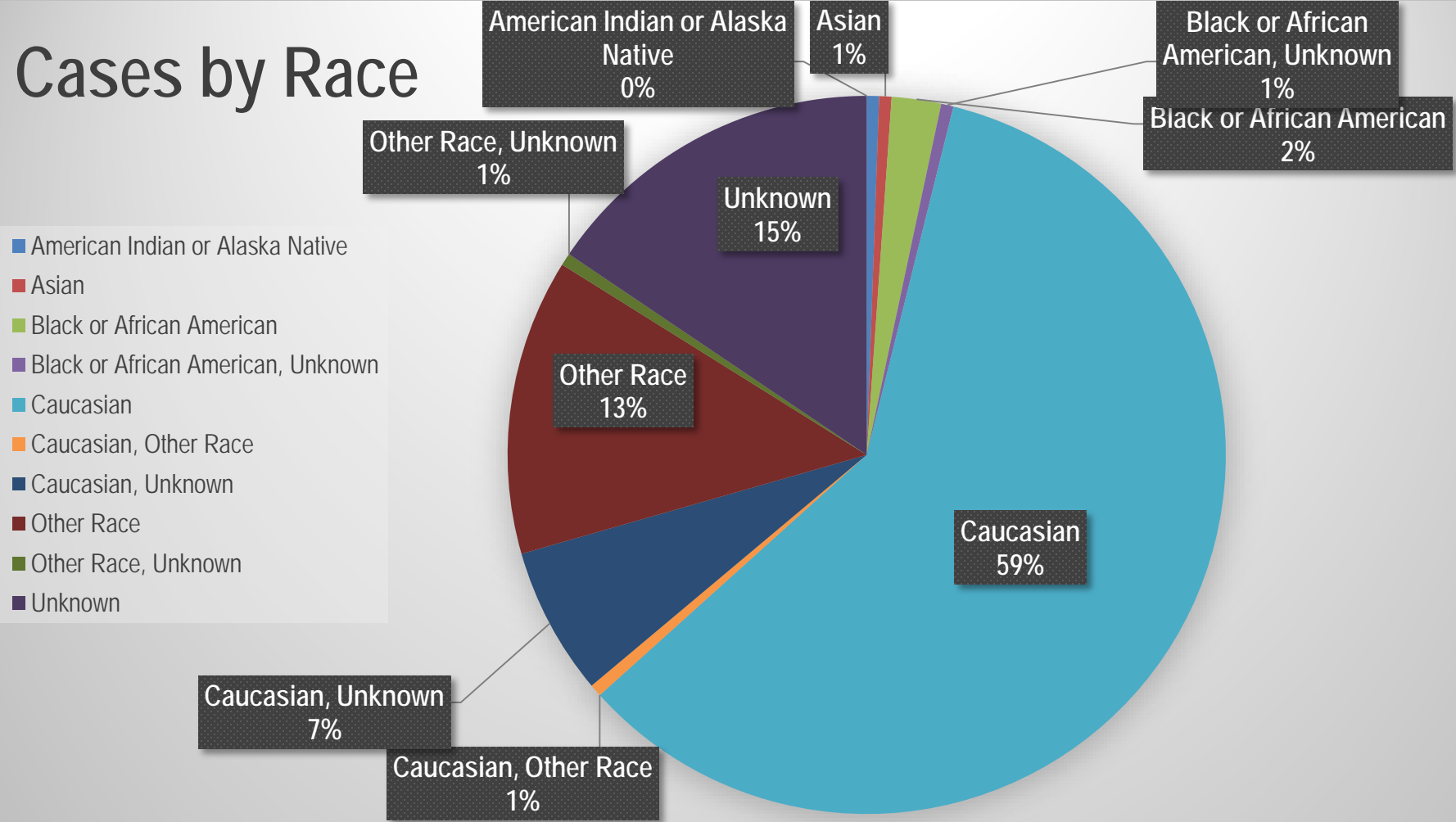


CASES BY AGE



Data as of 5/10/2020 at 1:30pm. Source: Michigan Data Surveillance System

Cases by Race

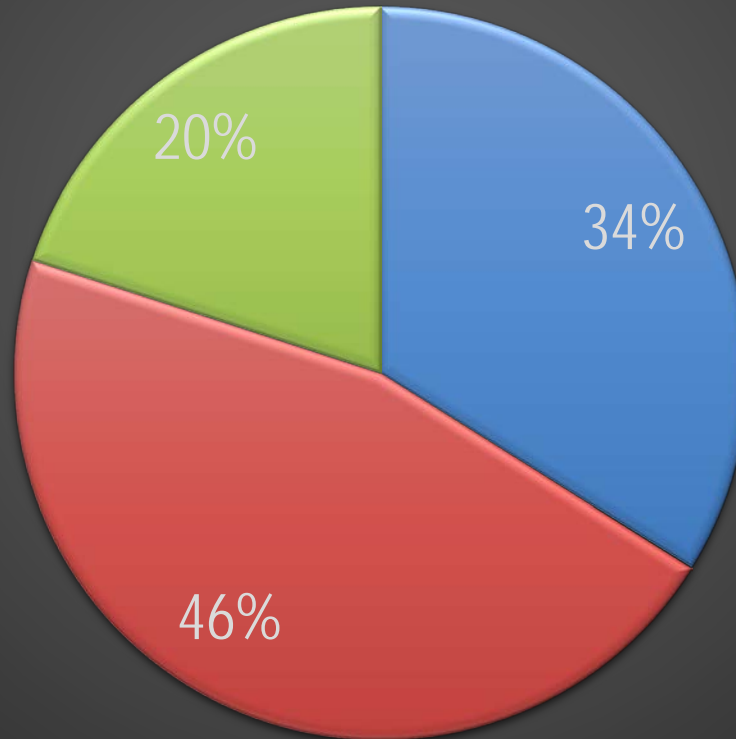


Cases by Ethnicity

■ Hispanic or Latino

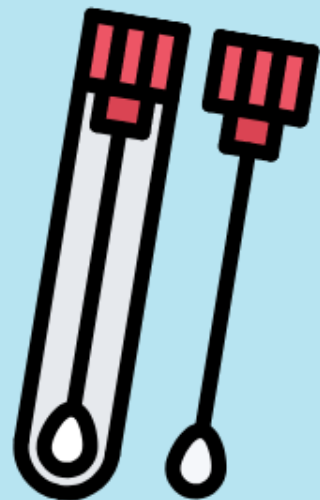
■ Not Hispanic or Latino

■ Unknown





COVID-19 DRIVE-THRU TESTING NOW AVAILABLE



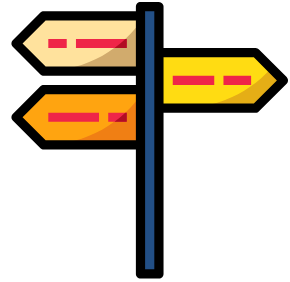
Call us at **269-686-4546**
to get screened

Limited appointments available for Thursdays

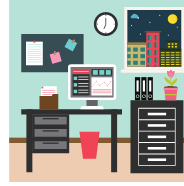


HEALTH
Department

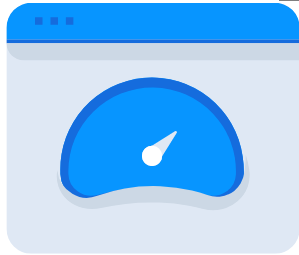
InterCare
Community Health Network



Industry Specific Reopening Guidance



Visit <https://www.blmcovid19.com/> for different sectors detailed guidance



Dashboards

Internal 

Deploying this week, will use in Thursday's EOC Update.

External 

Deploying this week. Working with our GIS Team on finalizing details



Business checklist to help evaluate Organization's Plans

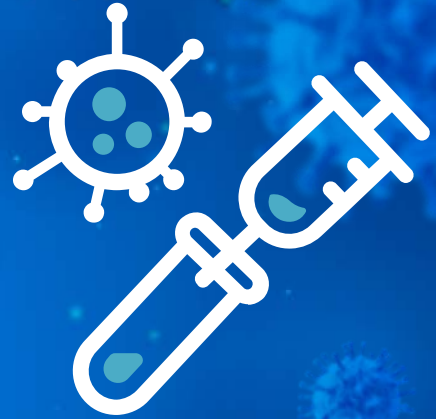
Contact **Randy Rapp**, Health Department Liaison for **COVID-19 Incident**, if you need to be added to the list, are requesting materials made, or have further questions.

rrapp@allegancounty.org
(269) 673-5411

ACHD Hotline: (269) 686-4546
Email: COVID-19@allegancounty.org

Questions/ Feedback?

What can we do to support you?



HEALTH
Department