



HEALTH
Department

COVID-19 Update

March 10, 2021



Allegan County COVID-19 Dashboard

Data as of 3/9/2021

<https://alleganco.maps.arcgis.com/apps/opsdashboard/index.html#/792287b41e3f485c97f968335b45ca6e>

Two Week Snapshot

Total Cases: 162

Monitoring: 319

Deaths: 2

Hospitalizations: 11

Positivity Rate: 4.1%

Date Range: 2/11/2021- 2/24/2021

Two Week Cases by Age

0-9: 7

10-19: 24

20-29: 21

30-39: 28

40-49: 16

50-59: 24

60-69: 24

70-79: 12

80+: 3

Unknown: 3

-19 Dashboard

Total
7,447
Cases

2/19: Upon further investigation, cases that were marked as probable were deemed not a case since they did not meet the criteria.
Last update: a few seconds ago

Total Cases

COVID-19
118
related deaths

Last update: a few seconds ago

Total
186
Hospitalizations

Total hospitalizations (since March 21): positive or probable COVID-19 diagnosed persons that have been hospitalized during their course of illness.
Last update: a few seconds ago

Last update: a few seconds ago

Total Tests
99,278

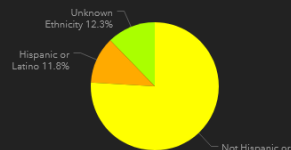
Last update: a few seconds ago

Recovered
6,989
per MDHHS definition

The number of persons with a confirmed COVID-19 diagnosis (either by lab or probable positive diagnosis) who are alive 30 days post-onset (or referral date if onset is not available).
Last update: a few seconds ago

Last update: a few seconds ago

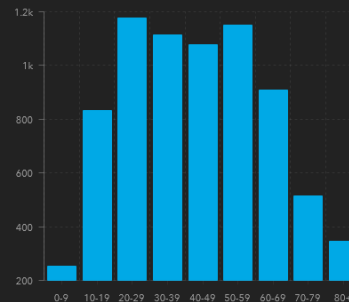
Percentage of Cases by Ethnicity



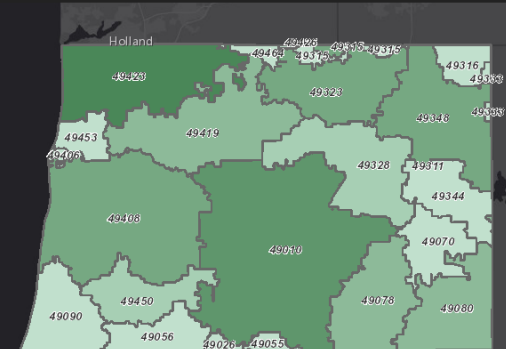
Last update: a few seconds ago

Cases by Gender Cases by Race Cases by Ethnicity

COVID-19 Number of Cases by Age



Cases by ZipCode



EaRI, HERE, NPS | EaRI, HERE, NPS

Seven Day Moving Average of New Cases per Day



Average number of cases over the past seven days based on date referred to the health department.

Last update: a few seconds ago

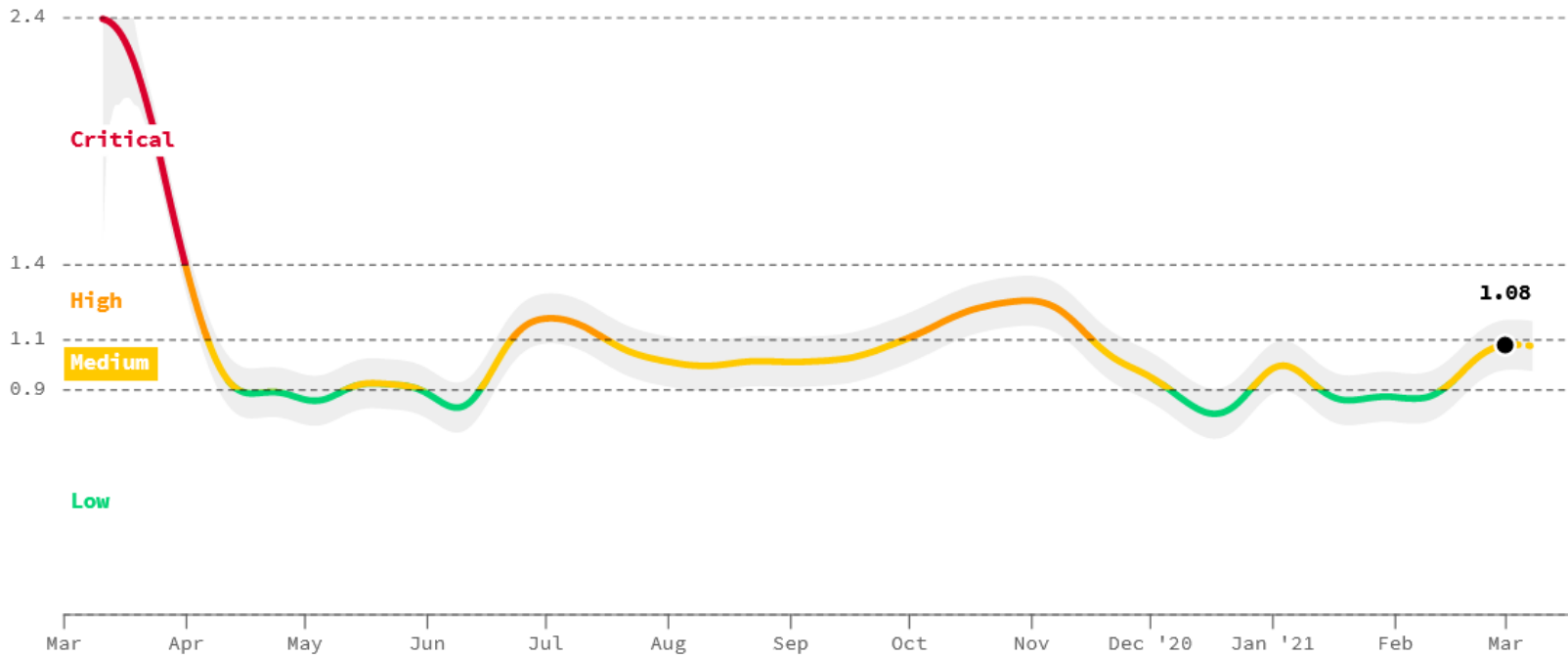
7-Day Moving Average of New Cases New Cases per Day Cumulative Cases and Deaths

Infection rate ⓘ

MICHIGAN

[Save](#) [Share](#)

On average, each person in Michigan with COVID is infecting 1.08 other people. Because this number is around 1.0, it means that COVID continues to spread, but in a slow and controlled fashion.



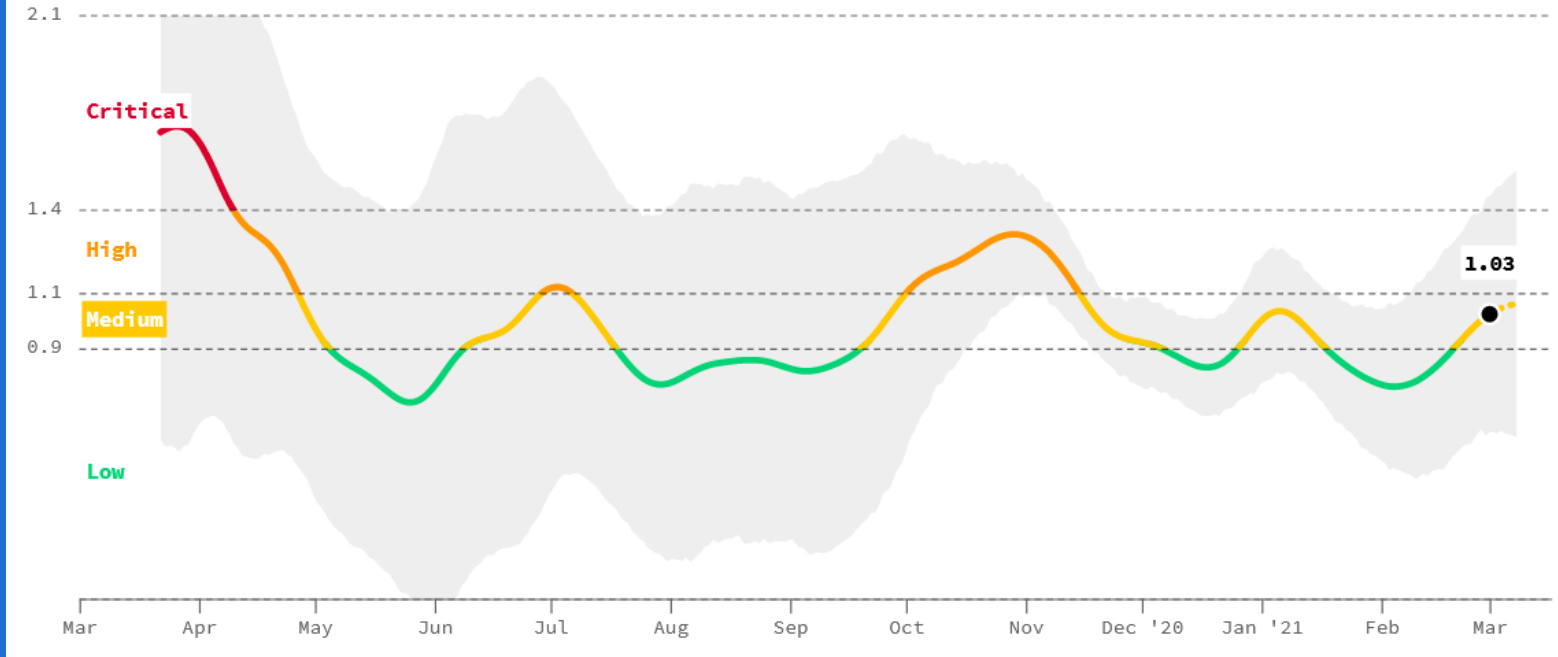
Updated 3/9/2021

Infection rate ⓘ

ALLEGAN COUNTY, MICHIGAN

Save Share

On average, each person in Allegan County, Michigan with COVID is infecting 1.03 other people. Because this number is around 1.0, it means that COVID continues to spread, but in a slow and controlled fashion.



Updated 3/9/2021

COVID-19 Mass Testing and Containment

MITIGATION ROADMAP



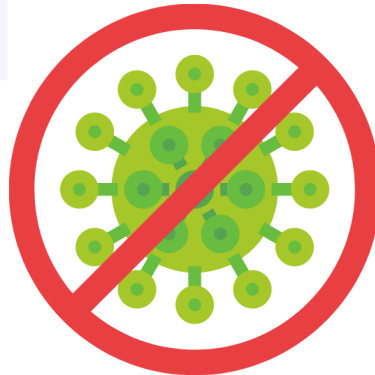
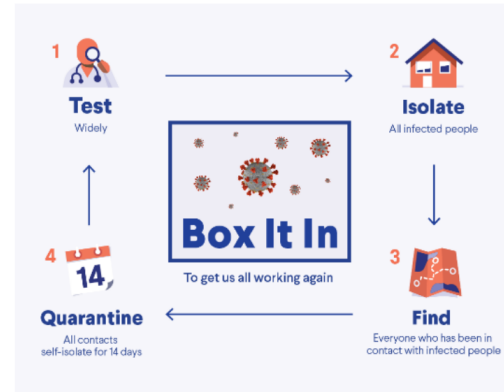
INCIDENT ACTION PLAN OBJECTIVES

1. Identify cases, isolate the sick, quarantine the exposed, and protect vulnerable populations
Provide information to the public, media, and County staff to increase public awareness, address misinformation, and protect the public and increase community resiliency
2. Prepare, mitigate, and recover from widespread transmission in Allegan County

STATE & LOCAL ORDERS

Michigan Public Health Code

EPIDEMIOLOGICAL MODEL



Enhanced Ability to Test, <https://mistartmap.info/>

Allegheny County, data as of 3/6/2021

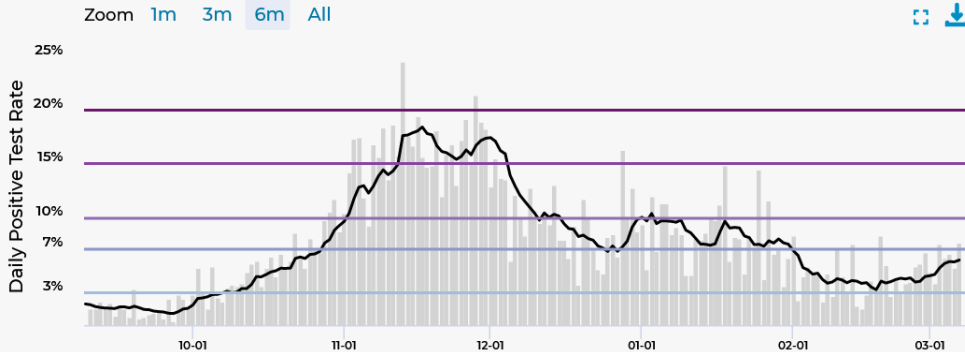
Test Results

5.8%
positive tests *

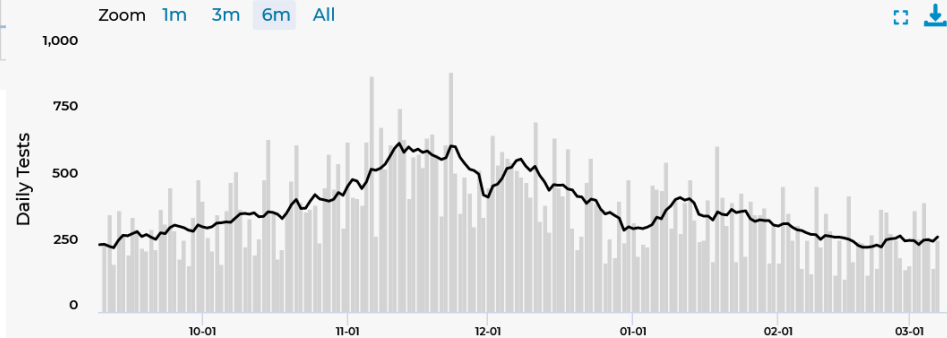
267
daily tests
administered *

2 weeks ⓘ
Feb 16 - Mar 02

Daily Positive Test Rate ALLEGANY COUNTY



Daily Tests ALLEGANY COUNTY



Test Thresholds
Percent Positive

Low: <3%

A: 3-7%

B: 7-10%

C: 10-15%

D: 15-20%

E: >=20%

New Cases, <https://mistartmap.info/>, Allegan County, data as of 3/6/2021

▼ **New Cases**

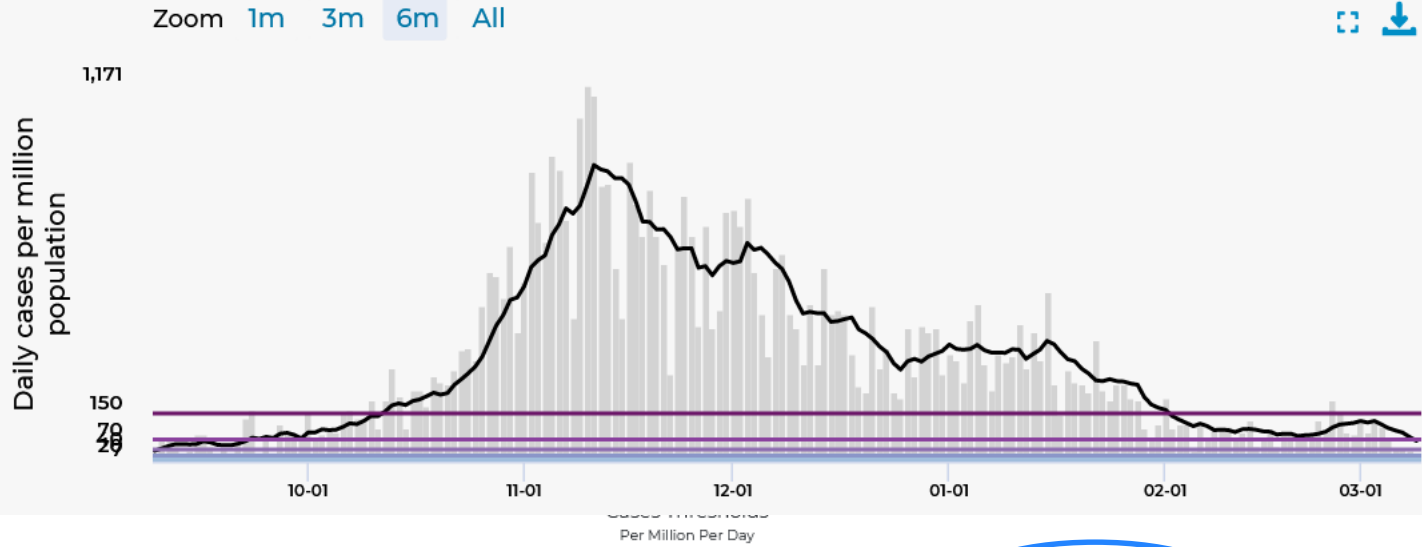
96.6
daily/million *

11.1
daily *

📉 **7 days** ⓘ
Feb 28 - Mar 06

Daily cases per million population

ALLEGAN COUNTY



Low: <7

A: 7-20

B: 20-40

C: 40-70

D: 70-150

E: >=150

Comparison with Neighboring Counties, <https://mistartmap.info/>

Allegan County, data as of 3/9/2021

AREA	REGION RISK LEVEL (FEB 20)	COUNTY RISK LEVEL (MAR 09)	DAILY CASES PER MIL. * (MAR 02)	CDC CASE TREND (MAR 09)	% POSITIVE TESTS * (MAR 07)	% POSITIVE WEEKLY TREND (MAR 02)	DAILY TESTS PER MIL. * (MAR 07)
Allegan		D	121.4		6.0%	2w	2,456.7
Barry		D	133.2	8d	3.8%	1w	2,673.6
Kalamazoo		D	127.7		6.0%	2w	2,928.9
Kent		D	113.2	59d	4.2%	1w	3,209.2
Ottawa		D	97.5	57d	3.9%	8w	2,808.5
Van Buren		D	94.8		6.4%	1w	3,078.3

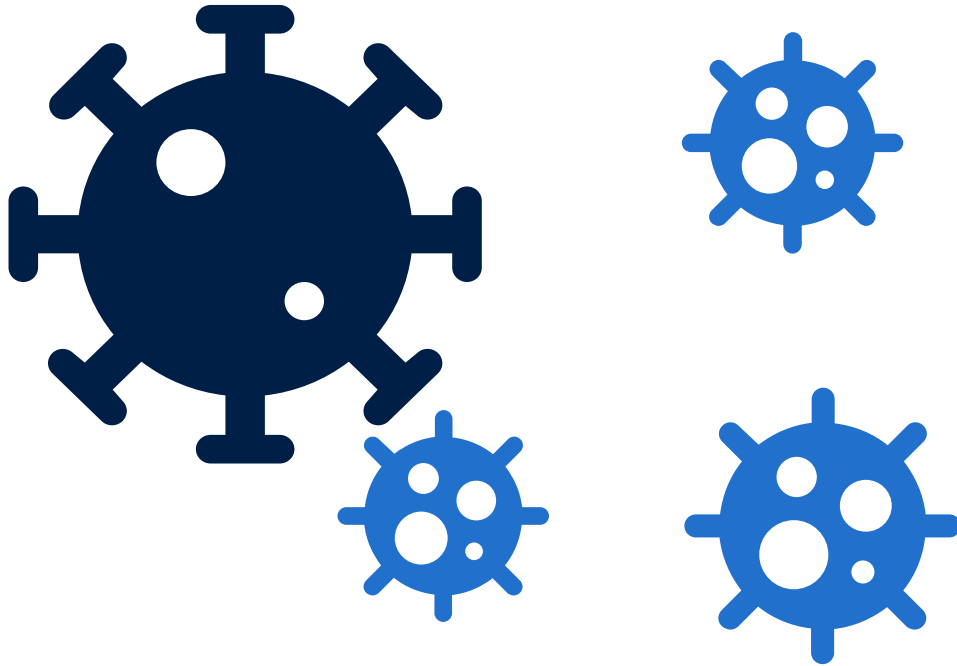
Epidemiologic Information, Allegan County

Overall	Percent
Healthcare Worker	7.6%
Live or work in high-risk/congregate facility	11.6%
First Responder	1.2%
Other Essential Worker/Critical Infrastructure	15.9%
Healthcare Contact to confirmed care	0.7%
Community Contact to confirmed case	10.6%
Household Contact to confirmed case	17.1%
Total Cases: 7,257	

Cases Reported in Past two weeks	Percent
In quarantine at time of onset/positive test	23.2%
Associated with known cluster/outbreak	1.9%
Any Contact to confirmed case	33.8%
Healthcare contact to confirmed case	0.5%
Community contact to confirmed case	10.1%
Household contact to confirmed case	23.2%
Attended Community Event/Mass Gathering	2.4%
Any Travel (international, domestic, in state)	10.6%
Source of Infection is unknown	36.7%
Number of cases reported in past 2 weeks: 207	

Clinical Information

Asymptomatic Cases: 14.5%



Symptoms	Percent
Fatigue/Lethargy/Weakness	68.6%
Cough	64.6%
Fever	47.5%
Chills	43.8%
Shortness of Breath	21.4%
Difficulty Breathing	14.4%
Muscle Aches (Myalgia)	55.3%
Headaches	66.9%
Runny Nose	48.3%
Nausea	22.6%
Congestion	58.8%
Sore Throat	39.9%
Diarrhea	24.1%
Loss of taste	42.8%
Loss of smell	42.8%

Data as of 3/9/2021

Source: Michigan Disease Surveillance System

Breakdown of Cases by School Age Categories

Total Case Count	7447
Number of Cases <18 years	849
% cases <18 years	11.4%

Data as of 3/9/2021.

Source: Michigan Disease Surveillance System

<u>Approximate Grade Level</u>	<u>Age</u>	<u>Case Count*</u>	<u>% total cases</u>	<u>% cases <18 years</u>
	0-2 years	65	0.9%	7.7%
Pre-K age	3-4 years	53	0.7%	6.2%
K-5th grade age	5-10 years	210	2.8%	24.7%
6-8th grade age	11-13 years	156	2.1%	18.4%
9-12th grade age	14-17 years	365	4.9%	43.0%

**Case counts are based on case ages, which have been grouped into approximate grade levels.*

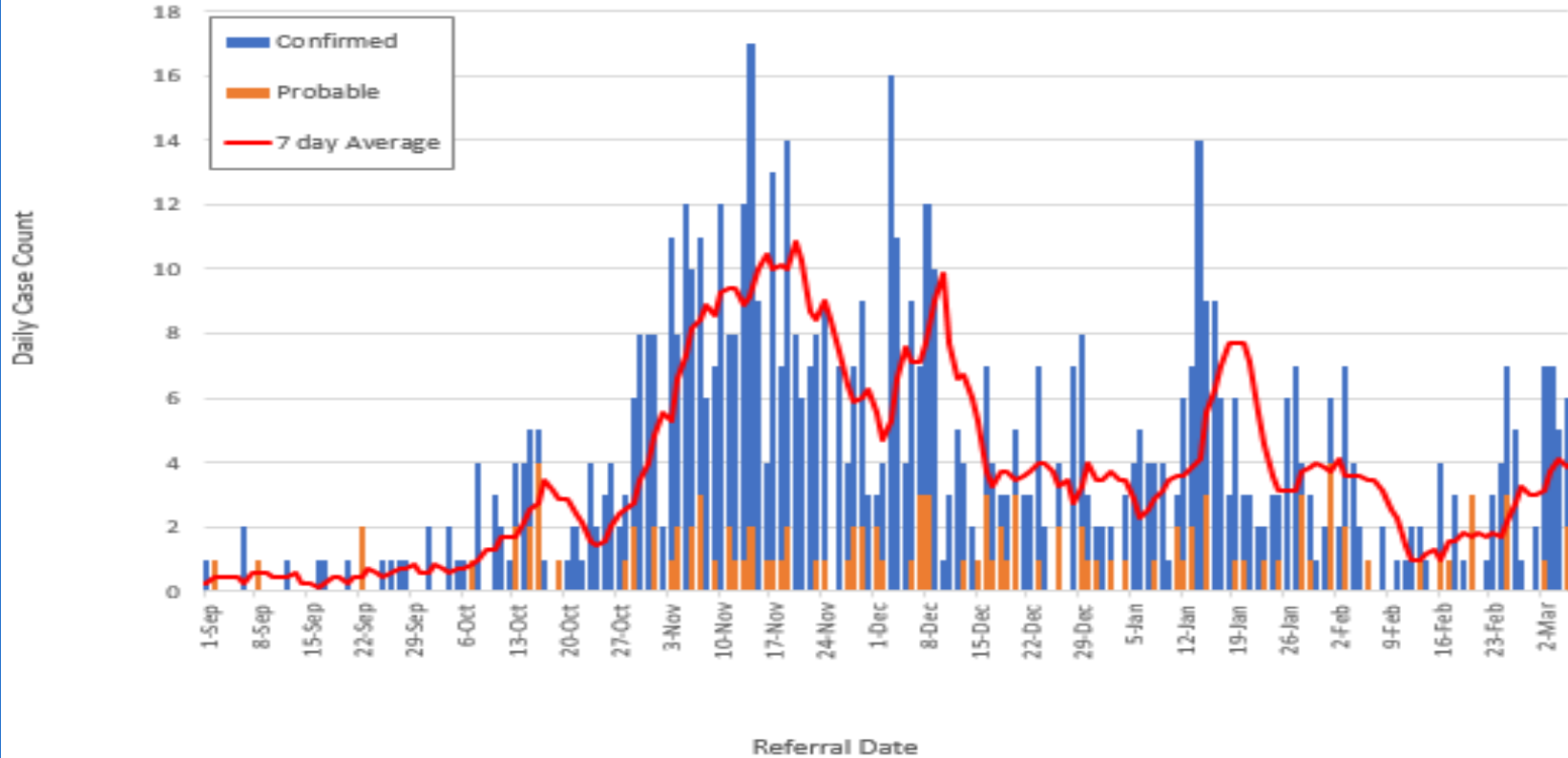
These counts may not reflect the actual grade level of cases.

To prevent double-counting of cases, the age brackets do not overlap.

Case count by age, data from 2/24/21-3/9/21 (2 weeks)

0-2 years	3-4 years	5-10 years	11-13 years	14-17 years
2	4	13	12	30

Allegan County School Aged COVID-19 Cases by Referral Date



Sufficient Health Care Capacity

Statewide Hospital Capacity Report for COVID-19* 03/08/2021**

	Hospital Beds	Adult Hospital Beds	Hospital Inpatient Beds	Hospital Inpatient Bed Occupancy	Adult Hospital Inpatient Beds	Adult Hospital Inpatient Bed Occupancy	ICU Beds	ICU Bed Occupancy	Adult ICU Beds	Adult ICU Bed Occupancy	Total Ventilators	Mechanical Ventilators in use
Region 5	1,648	1,579	1,368	948	1,346	928	187	117	148	114	326	55
Region 6	3,568	3,038	3,128	1,983	2,639	1,716	404	255	239	153	580	95

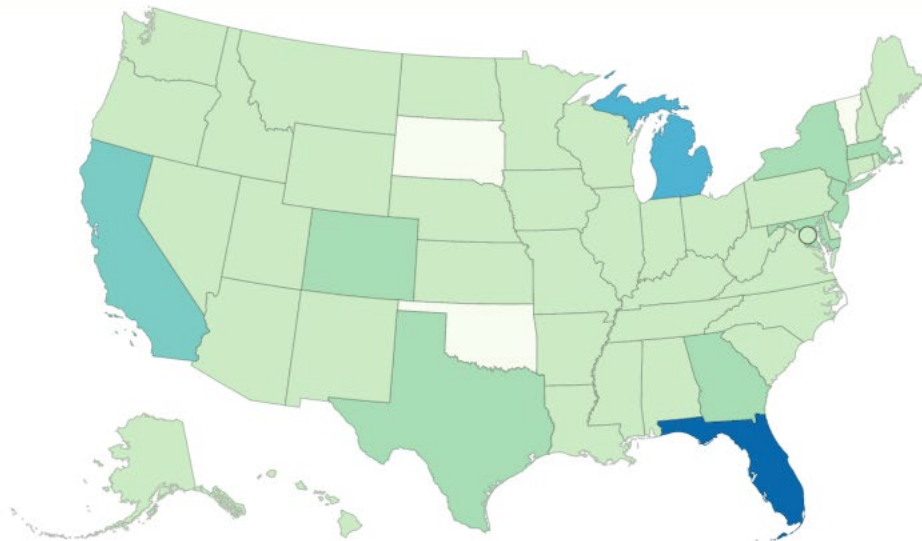
HCC Region	Region 5	Region 6
Total Hospitalized Adult Suspected/Confirmed	56	89
Adult Confirmed-Positive COVID	54	71
Hospitalized Peds Confirmed/Suspected	0	7
Hospitalized Ped Confirmed-Positive	0	7
Hospitalized and Ventilated COVID	6	7
Adult ICU Confirmed/Suspected COVID	20	23
ICU Adult Confirmed-Positive COVID	19	22
Prev Day COVID Related ED Visits	121	74

Region 5	Region 6
↓	↓
↓	↓
↓	↑
↔	↑
↓	↓
↓	↓
↓	↓
↑	↓

COVID-19 Metrics
3/8/21, by HCC Region

First known MI case of B.1.351 (South Africa) identified this week
MI Cases of B.1.1.7 (UK): 437
No known cases identified in Allegan County

Emerging Variant Cases in the United States**



Number of Cases

○ 0 to 0	● 1 to 100
● 101 to 200	● 201 to 300
● 401 to 500	● 601 to 700

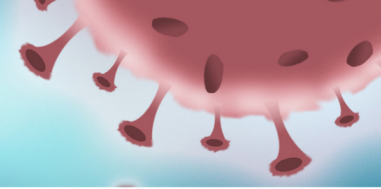
Filters

Variant B.1.1.7 ▾

Territories AS GU MH FM MP PW PR VI



REDUCE YOUR RISK ON THE COVID-19 VARIANTS



Viruses constantly change through mutation, and new variants of a virus are expected to occur over time. Sometimes new variants emerge and disappear. Other times, new variants emerge and persist.

Actions to take to reduce your risk

- Upgrade to a 2 to 3 layer mask

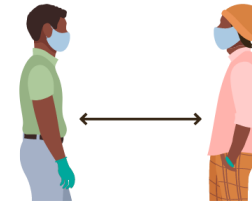


- Cut down your time in public places, including grocery stores



- Limit spending time indoors with people outside of your home

- Stay away from crowds and keep your distance



- Keep washing those hands!



[cdc.gov/coronavirus](https://www.cdc.gov/coronavirus)



HEALTH
Department

Travel Guidance



- ▶ Updated guidance sent 3/2/21 to community partners
- ▶ **Allegan County Health Department recommends** strong adherence to proper mitigation strategies during and after travel. Employee symptoms should be monitored for 14 days post-travel. **Businesses should consider remote work for employees 10 days after travel when individual employee circumstances allow.** Some travel destinations may have requirements or restrictions for travelers. [Check here](#) to plan accordingly. Ultimately, this is a business decision

CDC: Public Health Recommendations for vaccinated individuals (in residential settings)

- ▶ Fully vaccinated people can:
 - ▶ Visit with other fully vaccinated people indoors without wearing masks or physical distancing
 - ▶ Visit with unvaccinated people from a single household who are at low risk for severe COVID-19 disease indoors without wearing masks or physical distancing
 - ▶ Refrain from quarantine and testing following a known exposure if asymptomatic



CDC: Public Health Recommendations for vaccinated individuals

- ▶ For now, fully vaccinated people should continue to:
 - ▶ Take precautions in public like wearing a well-fitted mask and physical distancing
 - ▶ Wear masks, practice physical distancing, and adhere to other prevention measures when visiting with unvaccinated people who are at [increased risk for severe COVID-19](#) disease or who have an unvaccinated household member who is at increased risk for severe COVID-19 disease
 - ▶ Wear masks, maintain physical distance, and practice other prevention measures when visiting with unvaccinated people from multiple households
 - ▶ Avoid medium- and large-sized in-person gatherings
 - ▶ Get tested if experiencing [COVID-19 symptoms](#)
 - ▶ Follow guidance issued by individual employers
 - ▶ Follow CDC and health department travel requirements and recommendations

<https://www.cdc.gov/coronavirus/2019-ncov/vaccines/fully-vaccinated-guidance.html>

Key Points from CDC guidance

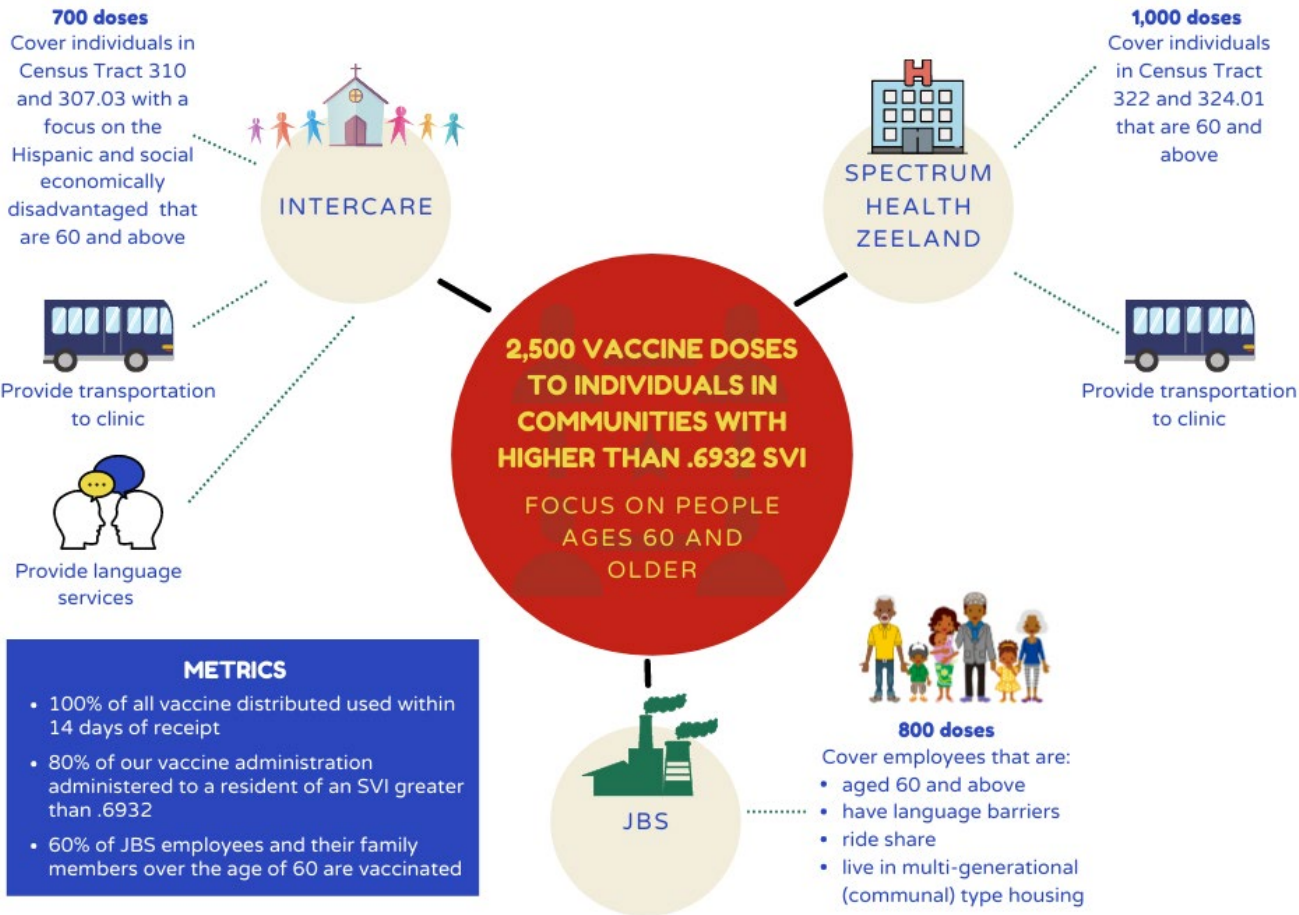
- ▶ This CDC guidance is specific to small gatherings on a household level.
- ▶ Fully vaccinated people engaging in social activities in **public settings (businesses, schools, etc.)** should continue to follow all [guidance for these settings](#) including wearing a well-fitted mask, maintaining physical distance (at least 6 feet), avoiding crowds, avoiding poorly ventilated spaces, covering coughs and sneezes, and washing hands frequently.
 - ▶ This would include workplaces

Vaccinated Individuals identified as close contacts

- ▶ **Business guidance:** continue to report close contacts in the business. If an individual is identified as a close contact and state they are vaccinated during the contact tracing, ACHD will need to verify they are fully vaccinated
- ▶ We will release them with a modified quarantine letter if they are fully vaccinated

Allegan County Health Department awarded 2,500 vaccines for Community Outreach 60 and Older Vaccine Project

ALLEGAN COUNTY HEALTH DEPARTMENT



METRICS

- 100% of all vaccine distributed used within 14 days of receipt
- 80% of our vaccine administration administered to a resident of an SVI greater than .6932
- 60% of JBS employees and their family members over the age of 60 are vaccinated

COVID-19 Vaccine Updates

5 VACCINE STRATEGIES



Get more people vaccinated

Expand capacity as much as possible, prioritizing those vulnerable to severe disease and exposure and ensuring equity throughout process



Build a robust network of vaccination sites

Ensure all Allegan County community has equitable access to vaccines



Promote efficiency in vaccine delivery and administration

Maximize MDHHS local allocation of vaccine while driving towards eliminating disparities in vaccine administration and maximizing operational efficiency



Mobilize personnel to maximize vaccination efforts

Leverage human resource capital and partnerships to support vaccination efforts



Empower people with information to gain confidence to get vaccinated

Build a targeted communication effort that aligns with MDHHS to assure Allegan County communities have access to timely, accurate, and understandable information on vaccines.

Allegan County COVID-19 Vaccine Plan

Estimated schedule for first doses administered															
Phase	People covered	Dec	Jan	Feb	March	April	May	June	July	Aug	Sept	Oct	Nov	Dec	
1A	Healthcare workers	[Green bar from Dec to Dec]													
	Long term care residents and staff	[White bar from Dec to Jan]	[Green bar from Jan to Dec]												
1B	75 years+ not covered above	[White bar from Dec to Jan]	[Green bar from Jan to Dec]												
	Prioritized frontline responders	[White bar from Dec to Jan]	[Green bar from Jan to Dec]												
	School and child care staff	[White bar from Dec to Jan]	[Green bar from Jan to Dec]												
	Corrections staff	[White bar from Dec to Jan]	[Green bar from Jan to Dec]												
	Agriculture/food processing workers	[White bar from Dec to Feb]	[Green bar from Feb to Dec]	March 1st											
	Other essential frontline workers	[White bar from Dec to April]	[Green bar from April to Dec]												
1C	65-74 years old	[White bar from Dec to Jan]	[Green bar from Jan to Dec]												
	50-64 with disabilities/pre-existing conditions	[White bar from Dec to March]	[Green bar from March to Dec]	March 8th											
	Caregivers of children with special health care needs	[White bar from Dec to March]	[Green bar from March to Dec]	March 8th											
	16-49 with disabilities/pre-existing conditions	[White bar from Dec to April]	[Green bar from April to Dec]												
	Remaining essential workers	[White bar from Dec to Dec]	[Green bar from Dec to Dec]												
2	50 to 64 years not covered above	[White bar from Dec to March]	[Green bar from March to Dec]	March 22nd											
	16 to 49 years not covered above	[White bar from Dec to Dec]	[Green bar from Dec to Dec]												

Allocation Process

MDHHS allocates to local jurisdictions
based on Social Vulnerability Index



Alleghen County Health Department



75% of ACHD's allocation goes
to those 50 years+

25% of ACHD's allocation goes to
other eligible groups

Vaccine Strategies for eligible groups

- ▶ **Homebound**
 - ▶ Working with Senior Services to identify homebound individuals in our County
- ▶ **Individuals who are transient or homeless**
 - ▶ Meeting with HARA and Homeless Solutions this week to plan how we'll get these individuals registered
- ▶ **Food processing and agricultural workers**
 - ▶ Multi-pronged approach with Intercare, JBS, and Spectrum Health Zeeland to vaccinate this group
 - ▶ Targeted communications to Allegan County Employers including packet in English and Spanish for vaccine education and registering information
- ▶ **Individuals 50 and older**
 - ▶ Calling individuals with no email
 - ▶ Partnering with Senior Services to reach 60 and above in Allegan County
- ▶ **Caregivers of children with special health care needs**
 - ▶ Sending information to CSHCS clients at this time

65 and Older Priority Group

- ▶ Allegan County Health Department has notified everyone in our registry that is 65 years or older about their vaccine appointment. If you have registered, are 65 years or older, and still have not gotten your COVID-19 vaccine, please email covidvaccine@allegancounty.org with the subject line "I am 65 years or older and still need my vaccine"
- ▶ If you know someone who has said they still have not gotten a vaccine and fits this description, please email covidvaccine@allegancounty.org on their behalf with a phone number we can call.

VACCINE UPDATE

ALLEGAN COUNTY STATISTICS

COMPLETED

February 28, 2021 to
March 6, 2021

Year to Date

- Doses distributed: 3,600
- Doses administered*: 3,259
- Doses distributed: 15,750
- Doses administered*: 24,260



*based on person's residence. Individuals who live in Allegan County may get their vaccine out of jurisdiction (through work or other opportunities). These numbers would reflect the distribution to other jurisdictions, but appear on doses administered for Allegan County. The vaccines allocated towards the Federal partnership with long-term care facilities (LTCF) do not count towards doses allocated to Allegan County, however they will appear on doses administered for Allegan County since the individuals at LTCF are residents of Allegan County.

retrieved from MDHHS Vaccine Dashboard, 3/8/21

PLANNED

March 7, 2021 to March 13, 2021

5
Clinics



3,088
First and
Second
doses

REGISTERED

21,490

eligible
individuals
registered



28,855

Individuals living or
working in Allegan
County registered
for vaccine



What we've done so far

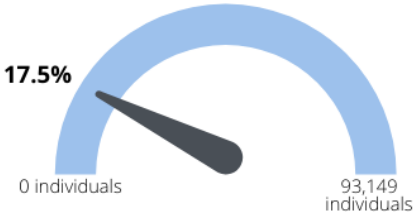
- ▶ ACHD is holding 4-5 clinics a week with current vaccine supply
 - ▶ Shout out to Allegan County Volunteers and MING for helping execute these clinics!
- ▶ Our allocation on 3/7/2021 was 4,300 first and second doses.
 - ▶ 2,500 of these are for the pilot program with Intercare, JBS, and Spectrum Health Zeeland





Allegan County VACCINE DATA

70% OF INDIVIDUALS 16
AND OLDER VACCINATED
BY END OF 2021



As of March 9, **16,299** people have been vaccinated*

↳ **9,336** people ages 65 and older vaccinated*



*Individuals given at least 1 dose of vaccine



over 1 in 12 Allegan County individuals are fully vaccinated.



Over 1 in 6 Allegan County individuals aged 65 and older are fully vaccinated.

COVID Vaccine Distribution

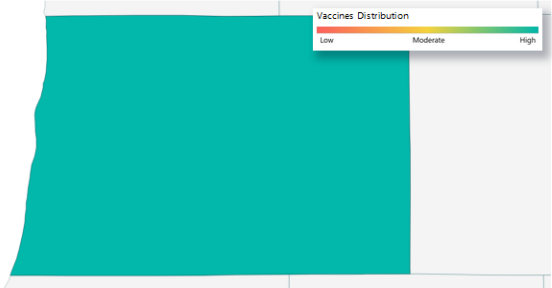
Dashboard updated: March 9, 2021. Date when the vaccine is shipped by the distributor, NOT the date of receipt by the provider. Includes first and second dose allotments. Doses are distributed to vaccine providers within the LHD jurisdiction.



Preparedness Region
Local Health Dept. Jurisdiction
Provider County
Data as of: 3/9/21

Distribution Date Range
Facility Type
Vaccine Type

COVID Vaccine Distribution by County



Microsoft Power BI

< 1 of 10 >

Region 5

Total Vaccines Distributed*

18,250

Pfizer 1,950
 Moderna 15,300
 J&J 1,000

*420,660 doses were transferred to Federal Programs

Doses Distributed by Preparedness Region

20K
15K
10K
5K
0K

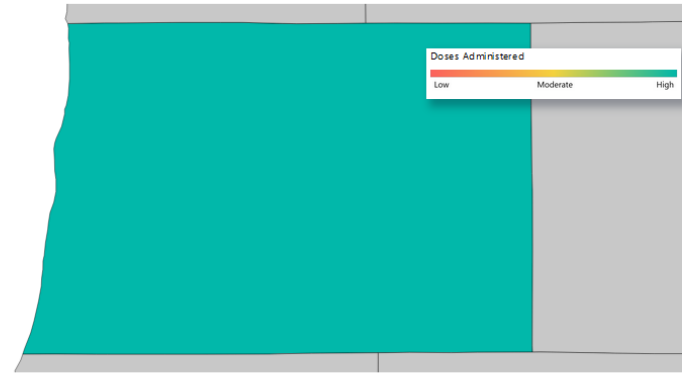
COVID Vaccine Doses Administered by Person's Residence

Dashboard Updated: March 9, 2021. Doses administered are reported according to where the patient lives and the date they were vaccinated. Providers have 24 hours to report vaccinations to MDHHS. MDHHS nulls the data each morning for cleaning and then posting to website by 3 pm, Monday through Friday.



Preparedness Region
Local Health Dept. Jurisdiction
County
Dose Number

COVID Doses Administered by County



Microsoft Power BI

< 3 of 10 >

Region 5

Data as of:
3/8/21

Week Ending Date

Sex

Age Group

Number of COVID
 Vaccine Doses
 Administered
24,260

Link to MI Vaccine Dashboard: https://www.michigan.gov/coronavirus/0,9753,7-406-98178_103214_103272-547150--,00.html

Do you want the COVID-19 Vaccine?

Sign up for COVID-19 Vaccine Notifications

Individuals **living** or **working** in Allegan County can complete the "I want the COVID-19 Vaccine" form found on

www.allegancounty.org/covid

If unable to complete the form online, call 211 or

ACHD's COVID-19 Hotline: 269-686-4546

Allegan County Health Department will notify you when you can make your COVID-19 vaccination appointment.

DISCLAIMER: Signing up for the COVID-19 Vaccine with Allegan County does not schedule your vaccine appointment. Allegan County Health Department is following the MDHHS Vaccination Prioritization Guidance and vaccine is available on a first come, first serve basis for the prioritization phases.

www.vaccinatewestmi.com

www.michigan.gov/COVIDvaccine



HEALTH
Department

¿Quieres la vacuna COVID-19? Inscríbese para recibir notificaciones sobre la vacuna COVID-19

Las personas que **viven** o **trabajan** en el condado de Allegan pueden completar el formulario "Quiero la vacuna COVID-19" que se encuentra en

www.allegancounty.org/covid

Si no puede completar el formulario en línea, llame al 211 o a nuestra línea directa COVID-19 al 269-686-4546

El Departamento de Salud del Condado de Allegan le notificará cuando puede hacer su cita para la vacunación COVID-19.

DESCARGO DE RESPONSABILIDAD: Inscribirse para la vacuna COVID-19 con el Condado de Allegan no programa su cita para la vacuna. El Departamento de Salud del Condado de Allegan está siguiendo la Guía de Priorización de Vacunación del MDHHS y la vacuna está disponible por orden de llegada para las fases de priorización.

www.vaccinatewestmi.com

www.michigan.gov/COVIDvaccine



HEALTH
Department

Hotline Updates

- ▶ Starting March 15, we are deactivating our ACHD COVID-19 Hotline. Individuals will be directed to call 2-1-1, connect with Senior Services if they are 60 years or older, or connected to another line if they have specific vaccine clinic or registry questions.
- ▶ Vaccine Related Questions: Please direct to covidvaccine@allegancounty.org
- ▶ If person does not have email access, it would be helpful to have your agency send covidvaccine@allegancounty.org with their name and number so we can connect with them.



Questions?