



HEALTH
Department

COVID-19 Update

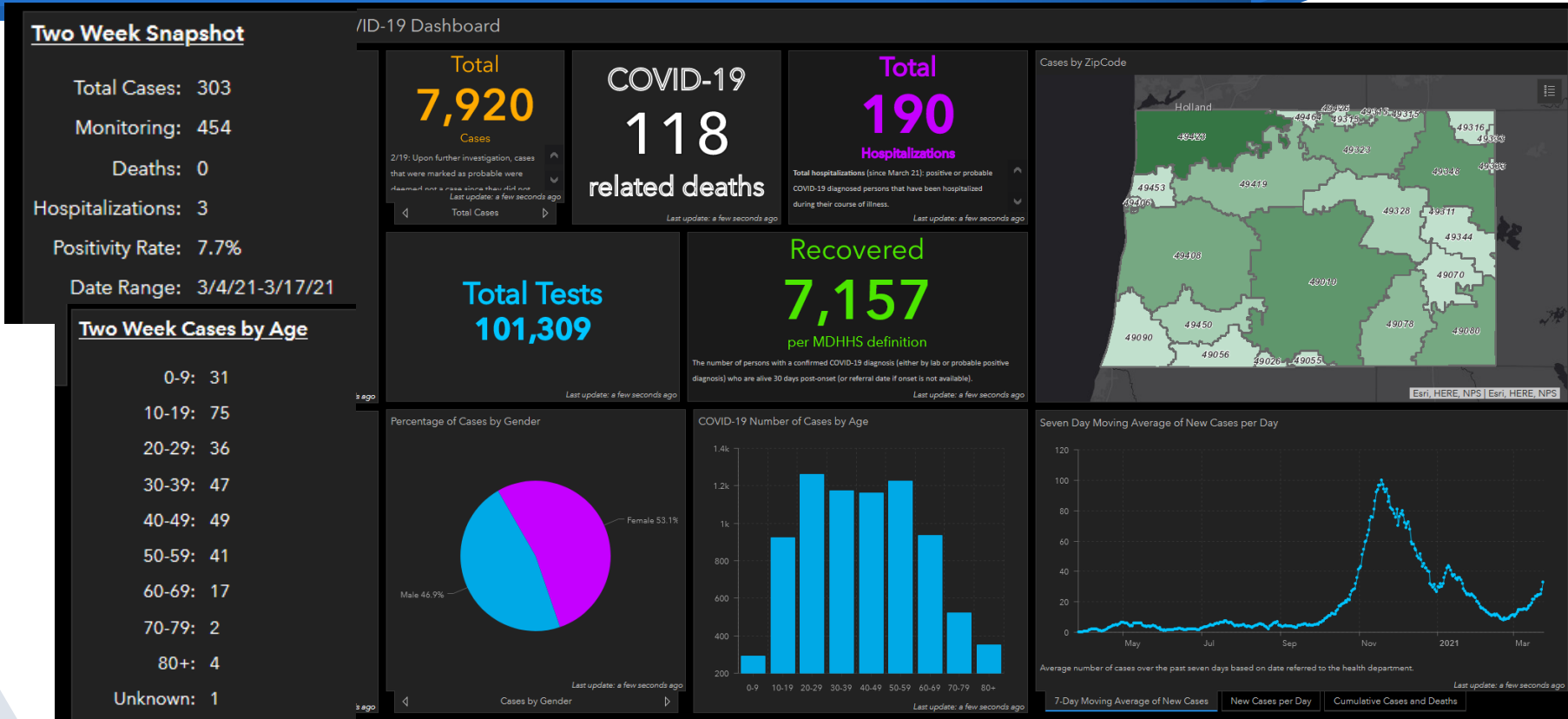
March 24, 2021



Allegan County COVID-19 Dashboard

Data as of 3/24/2021

<https://alleganco.maps.arcgis.com/apps/opsdashboard/index.html#/792287b41e3f485c97f968335b45c66>



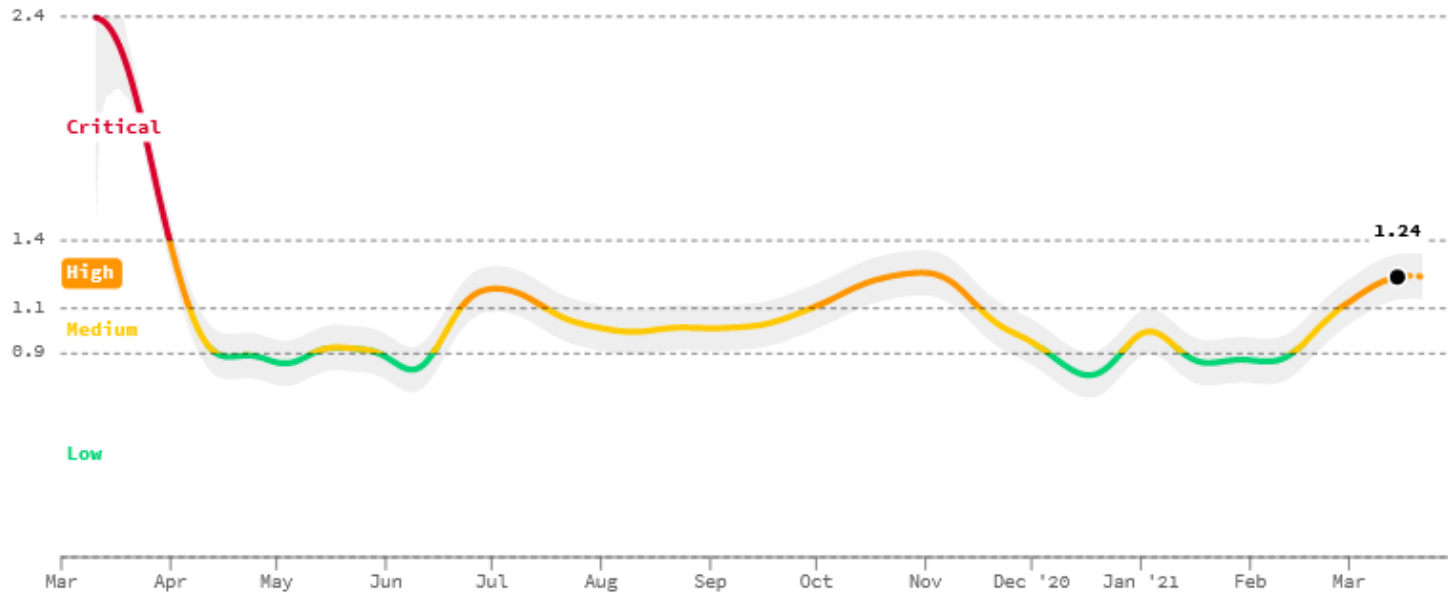
Infection rate ⓘ

MICHIGAN

Save

Share

On average, each person in Michigan with COVID is infecting 1.24 other people. As such, the total number of active cases in Michigan is growing at an unsustainable rate. If this trend continues, the hospital system may become overloaded. Caution is warranted.



Learn more about [where our data comes from](#) and [how we calculate our metrics](#).

Updated 3/23/2021

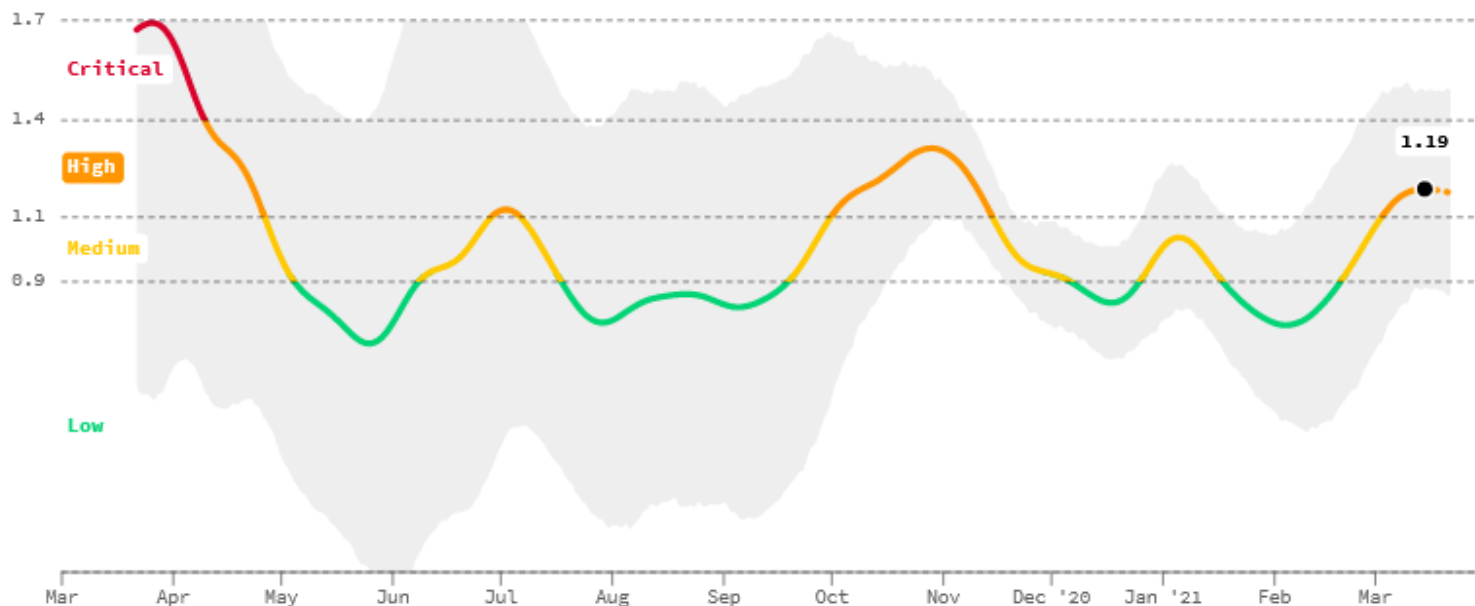
Infection rate ⓘ

ALLEGAN COUNTY, MICHIGAN

Save

Share

On average, each person in Allegan County, Michigan with COVID is infecting 1.19 other people. As such, the total number of active cases in Allegan County, Michigan is growing at an unsustainable rate. If this trend continues, the hospital system may become overloaded. Caution is warranted.



Learn more about [where our data comes from](#) and [how we calculate our metrics](#).

Updated 3/23/2021

COVID-19 Mass Testing and Containment

MITIGATION ROADMAP



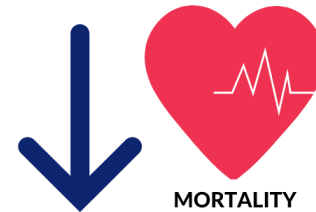
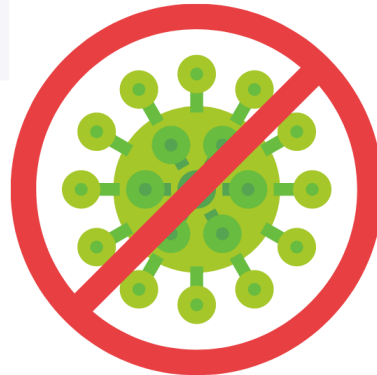
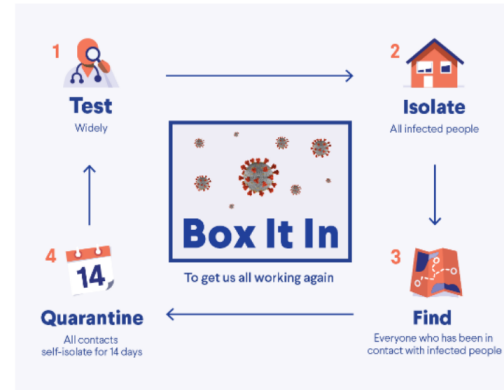
INCIDENT ACTION PLAN OBJECTIVES

1. Identify cases, isolate the sick, quarantine the exposed, and protect vulnerable populations
Provide information to the public, media, and County staff to increase public awareness, address misinformation, and protect the public and increase community resiliency
2. Prepare, mitigate, and recover from widespread transmission in Allegan County

STATE & LOCAL ORDERS

Michigan Public Health Code

EPIDEMIOLOGICAL MODEL



Enhanced Ability to Test, <https://mistartmap.info/>

Allegheny County, data as of 3/20/2021

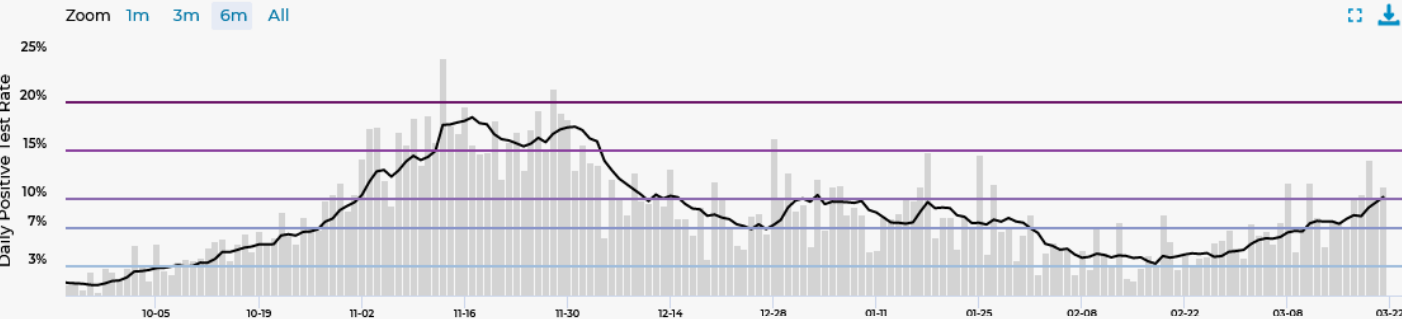
Test Results

9.6%
positive tests *

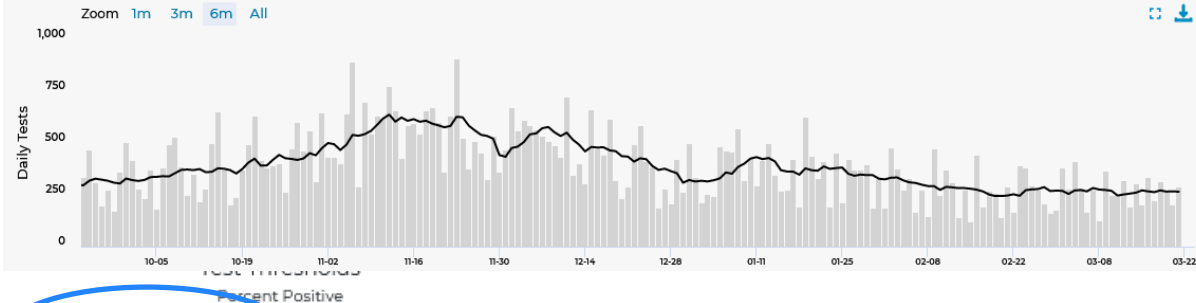
267
daily tests
administered *

4 weeks ⓘ
Feb 16 - Mar 16

Daily Positive Test Rate
ALLEGHENY COUNTY



Daily Tests
ALLEGHENY COUNTY



Low: <3%

A: 3-7%

B: 7-10%

C: 10-15%

D: 15-20%

E: >=20%

New Cases, <https://mistartmap.info/>, Allegan County, data as of 3/20/2021

▼ New Cases

208.2
daily/million *

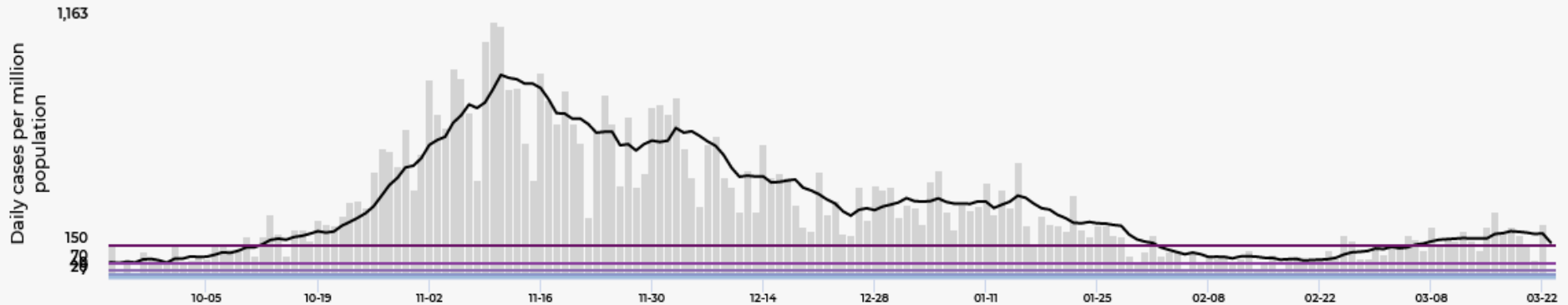
24
daily *



Daily cases per million population

ALLEGAN COUNTY

Zoom 1m 3m 6m All



Cases Thresholds
Per Million Per Day

Low: <7

A: 7-20

B: 20-40

C: 40-70

D: 70-150

E: >=150

Comparison with Neighboring Counties, <https://mi.startmap.info/>

Allegan County, data as of 3/23/2021

AREA	REGION RISK LEVEL (MAR 13)	COUNTY RISK LEVEL (TODAY)	DAILY CASES PER MIL. (MAR 16)	CDC CASE TREND (TODAY)	% POSITIVE TESTS (MAR 21)	% POSITIVE WEEKLY TREND (MAR 16)	DAILY TESTS PER MIL. (MAR 21)
Allegan		E	202.0		10.1%	4w	2,300.5
Barry		E	173.6		8.0%	1w	2,195.5
Kalamazoo		E	209.7		9.0%	4w	2,660.2
Kent		E	183.0		6.1%	1w	3,425.1
Ottawa		E	181.0		8.7%	2w	2,709.4
Van Buren		E	222.0		12.0%	1w	2,848.7

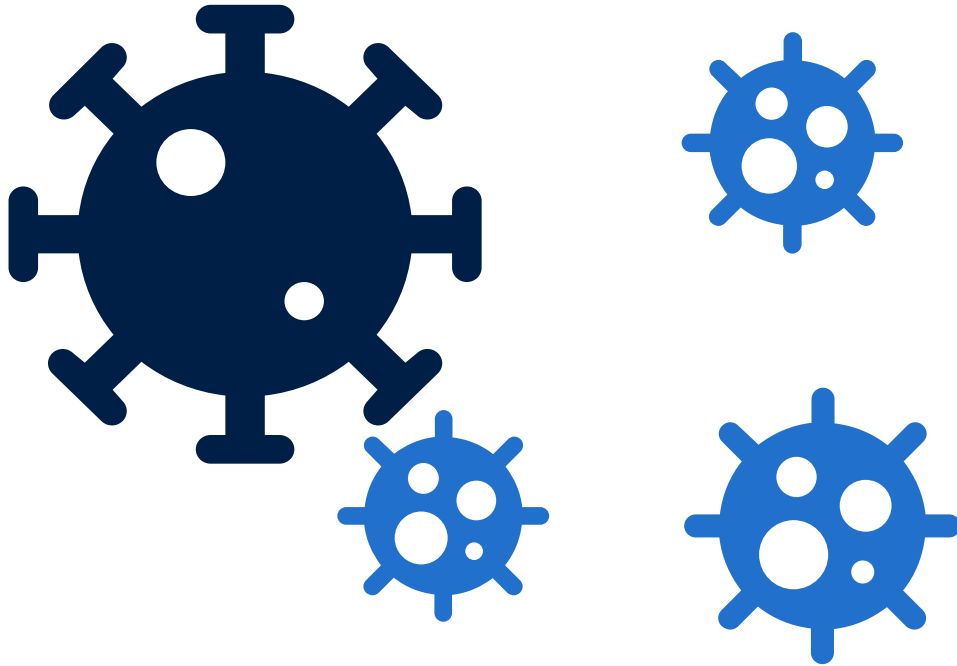
Epidemiologic Information, Allegan County

Overall	Percent
Healthcare Worker	7.1%
Live or work in high-risk/congregate facility	10.8%
First Responder	1.1%
Other Essential Worker/Critical Infrastructure	15.8%
Healthcare Contact to confirmed case	0.7%
Community Contact to confirmed case	10.5%
Household Contact to confirmed case	17.2%
Total Cases: 7,883	

Cases Reported in Past two weeks	Percent
In quarantine at time of onset/positive test	17.6%
Associated with known cluster/outbreak	0.7%
Any Contact to confirmed case	24.6%
Healthcare contact to confirmed case	0.0%
Community contact to confirmed case	8.8%
Household contact to confirmed case	16.0%
Attended Community Event/Mass Gathering	2.3%
Any Travel (international, domestic, in state)	6.8%
Source of Infection is unknown	30.9%
Number of cases reported in past 2 weeks: 443	

Clinical Information

Asymptomatic Cases: 14.1%



Symptoms	Percent
Fatigue/Lethargy/Weakness	68.7%
Cough	64.8%
Fever	48.0%
Chills	44.2%
Shortness of Breath	21.2%
Difficulty Breathing	14.5%
Muscle Aches (Myalgia)	55.4%
Headaches	66.9%
Runny Nose	48.3%
Nausea	22.8%
Congestion	59.2%
Sore Throat	40.4%
Diarrhea	24.3%
Loss of taste	42.7%
Loss of smell	42.6%

Data as of 3/23/2021

Source: Michigan Disease Surveillance System

Breakdown of Cases by School Age Categories

Total Case Count	7883
Number of Cases <18 years	956
% cases <18 years	12.1%

Data as of 3/23/2021.

Source: Michigan Disease Surveillance System

<u>Approximate Grade Level</u>	<u>Age</u>	<u>Case Count*</u>	<u>% total cases</u>	<u>% cases <18 years</u>
	0-2 years	73	0.9%	7.6%
Pre-K age	3-4 years	58	0.7%	6.1%
K-5th grade age	5-10 years	243	3.1%	25.4%
6-8th grade age	11-13 years	179	2.3%	18.7%
9-12th grade age	14-17 years	403	5.1%	42.2%

**Case counts are based on case ages, which have been grouped into approximate grade levels.*

These counts may not reflect the actual grade level of cases.

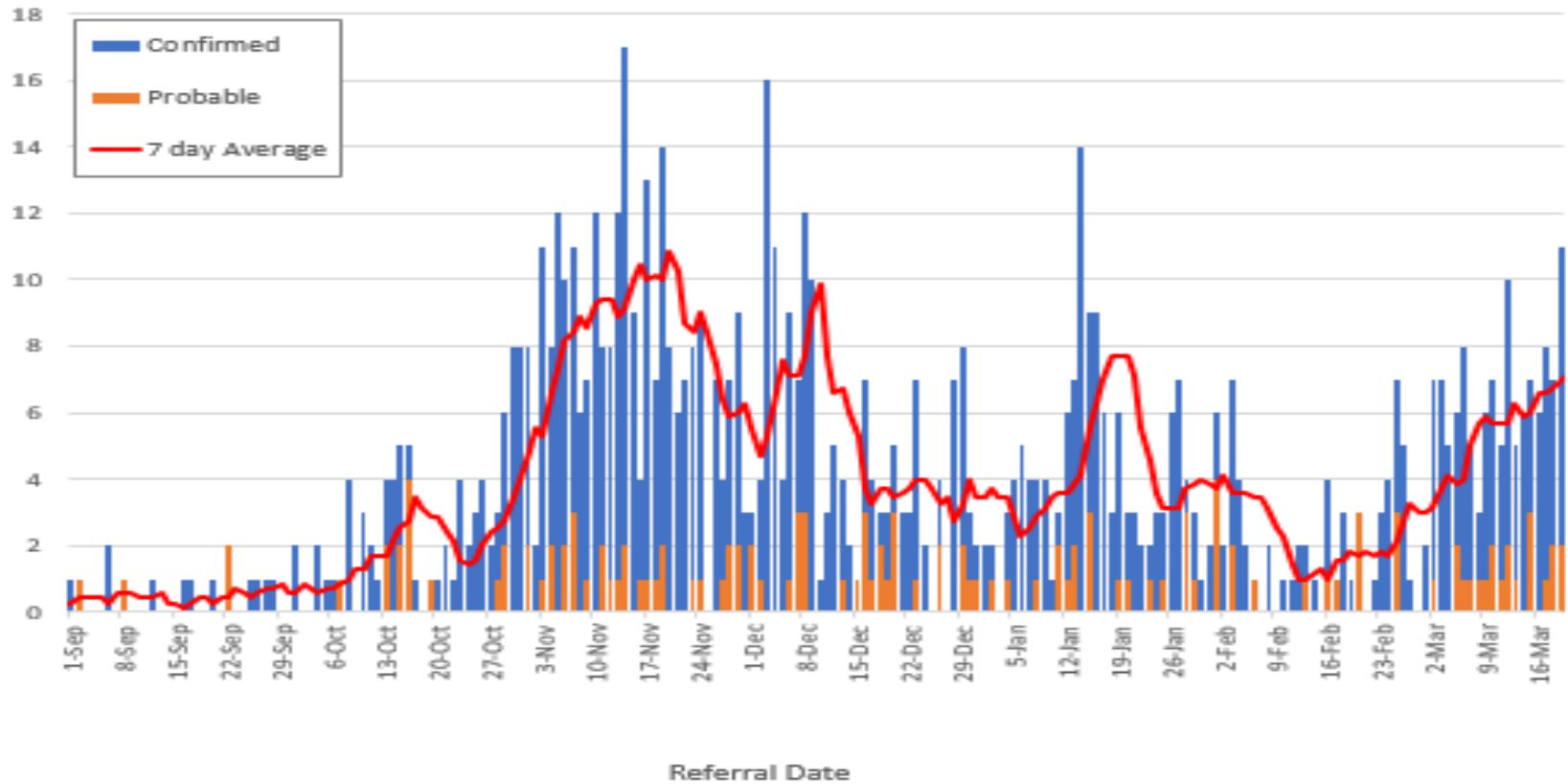
To prevent double-counting of cases, the age brackets do not overlap.

Case count by age, data from 3/9/21-3/23/21 (2 weeks)

0-2 years	3-4 years	5-10 years	11-13 years	14-17 years
8	5	33	23	38

Allegan County School Age COVID-19 Cases by Referral Date

Daily Case Count



Summary of the current COVID-19 wave

- In the last 31 days, Michigan cases per day have increased from ~1,000 to over 3,000
- As compared to the fall wave, this wave is ~5 days slower to reach the same growth (from 1,000 to 3,000)
- Also, this wave has come with ~300 fewer hospitalizations (at the same case rate of 2,500) and ~900 fewer over the same time (31 days), likely due to our age-based vaccination strategy which targets the most vulnerable
- While the state continues the vaccination roll-out, it will be critical to encourage our residents maintain strong disciplines and lower their risk of spreading the disease

Sufficient Health Care Capacity

Statewide Hospital Capacity Report for COVID-19* 03/22/2021**

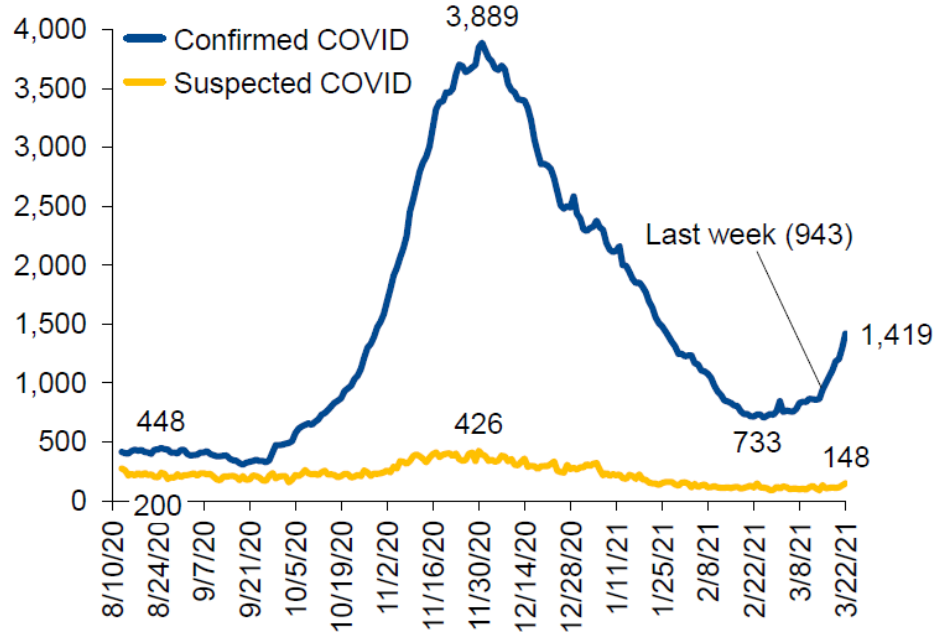
	Hospital Beds	Adult Hospital Beds	Hospital Inpatient Beds	Hospital Inpatient Bed Occupancy	Adult Hospital Inpatient Beds	Adult Hospital Inpatient Bed Occupancy	ICU Beds	ICU Bed Occupancy	Adult ICU Beds	Adult ICU Bed Occupancy	Total Ventilators	Mechanical Ventilators in use
Region 5	1,647	1,581	1,367	977	1,348	963	182	113	140	108	326	38
Region 6	3,459	3,038	3,131	2,019	2,632	1,739	398	276	240	158	580	97

HCC Region	Region 5	Region 6	Region 5	Region 6
Total Hospitalized Adult Suspected/Confirmed	104	118	↑	↑
Adult Confirmed-Positive COVID	100	106	↑	↑
Hospitalized Peds Confirmed/Suspected	0	4	↔	↓
Hospitalized Ped Confirmed-Positive	0	3	↔	↓
Hospitalized and Ventilated COVID	6	19	↔	↑
Adult ICU Confirmed/Suspected COVID	27	32	↑	↑
ICU Adult Confirmed-Positive COVID	26	31	↑	↑
Prev Day COVID Related ED Visits	117	96	↓	↑

COVID-19 Metrics
3/23/21, by HCC Region

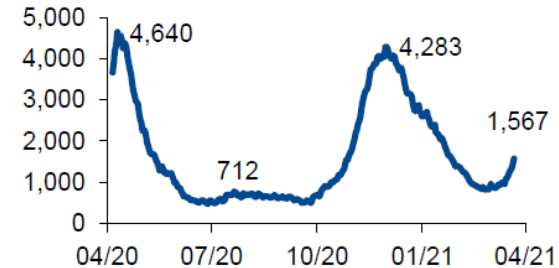
Hospitalizations have also begun to increase rapidly – up 50% or ~500 hospitalizations week-over-week

Hospitalization Trends 8/13/2020 – 3/22/2021



- Hospitals have seen younger patients requiring hospitalization

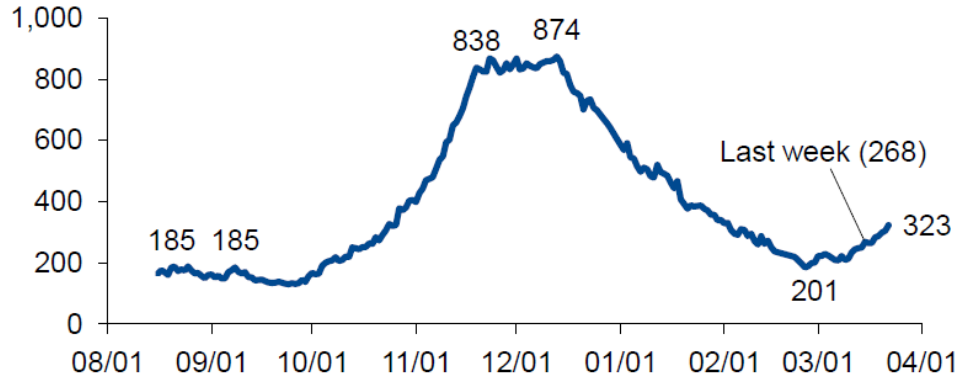
Hospitalized COVID¹ Historical Trend (beginning March)



1. This graph includes both confirmed and suspected cases
 2. Source MHA

The number of COVID-19 patients in the ICU has risen by 20% or ~60 patients week-over-week

Hospitalization Trends 8/16/2020 – 3/22/2020
COVID patients in ICUs



- Statewide, ~11% of ICU beds are occupied by COVID patients

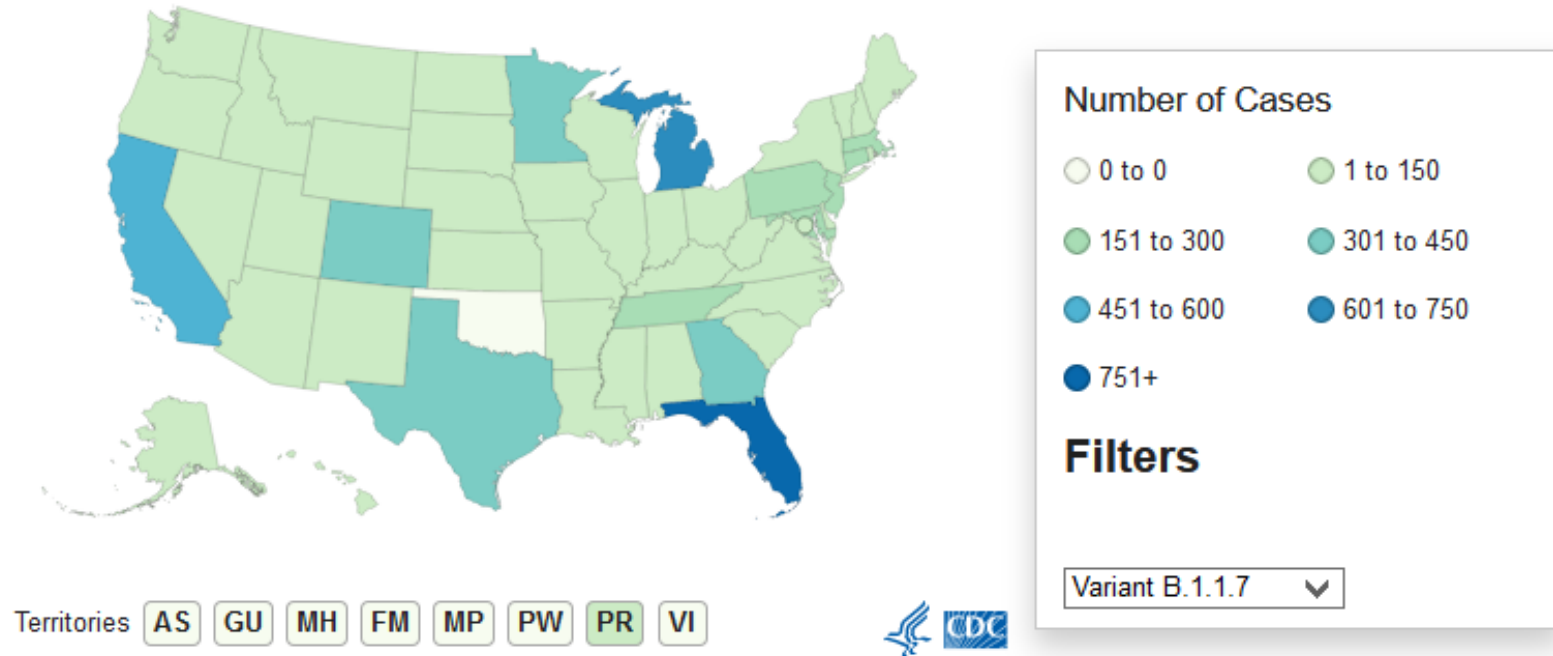
	North Detroit	South Detroit	Grand Rapids	Kalamazoo	Saginaw	Lansing & Jackson	Traverse	UP
ICU Occupancy	77%	83%	68%	78%	92%	78%	56%	41%
% of ICU beds COVID	12%	9%	11%	13%	12%	8%	4%	0%

Allegheny County Cases of B.1.1.7: 1

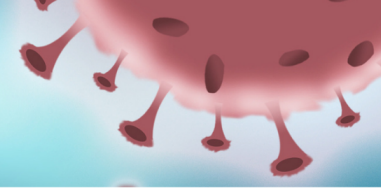
MI Cases of B.1.351 (South Africa): 1

MI Cases of B.1.1.7 (UK): 616

Cases of Variants of Concern in the United States*†



REDUCE YOUR RISK ON THE COVID-19 VARIANTS



Viruses constantly change through mutation, and new variants of a virus are expected to occur over time. Sometimes new variants emerge and disappear. Other times, new variants emerge and persist.

Actions to take to reduce your risk

- Upgrade to a 2 to 3 layer mask

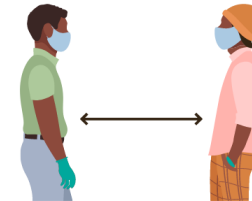


- Cut down your time in public places, including grocery stores



- Limit spending time indoors with people outside of your home

- Stay away from crowds and keep your distance



- Keep washing those hands!



[cdc.gov/coronavirus](https://www.cdc.gov/coronavirus)



HEALTH
Department

Travel Guidance



- ▶ **Allegan County Health Department recommends** strong adherence to proper mitigation strategies during and after travel. Employee symptoms should be monitored for 14 days post-travel. **Businesses should consider remote work for employees 10 days after travel when individual employee circumstances allow.** Some travel destinations may have requirements or restrictions for travelers. [Check here](#) to plan accordingly. Ultimately, this is a business decision
- ▶ [MDHHS Travel Guidance](#)



MDHHS Updates

Starting March 22

MDHHS is moving forward with vaccination of:

50+ Everyone 50 years or older



People aged 16 and up who have disabilities and/or medical conditions and their caregiver family members and guardians

Starting April 5:

16+

All people aged 16 and up who were not previously eligible

Vaccinations are ongoing for the previous groups.

Even with COVID-19 vaccinations, MDHHS urges everyone to continue to practice preventative measures such as properly wearing masks, social distancing and frequent handwashing to reduce the spread of the virus.

For further information regarding priorities and scheduling a vaccine appointment, visit: [Michigan.gov/COVIDvaccine](https://www.Michigan.gov/COVIDvaccine).

MI Safe Schools Testing Program

- Free antigen testing for PreK-12 educators, staff & students in Michigan schools. The new program is called the MI Safe Schools Testing Program, and over 400 schools and 12,000 educators are signed up for this free, weekly testing.
- MDHHS provides all the virtual training and technical assistance with setting the program up. School administrators can go to www.Michigan.gov/schoolCOVIDtesting to find out more, get trained, and enroll their schools.
- People can go to www.Michigan.gov/covidantigen to learn all about the free resources for testing available from MDHHS.

STATE OF MICHIGAN

COVID-19 VACCINE TOWN HALL FOR OLDER ADULTS

A CONVERSATION WITH HEALTH & ADULT SERVICES LEADERS

Zaneta Adams
Michigan Veterans Affairs Agency

Dr. Brenda Surae Eaton
Protect Michigan Commission Seniors Workgroup

Mark Hornbeck
AARP Michigan

Rev. Horace Sheffield
Detroit's New Destiny Christian Fellowship

Dr. Herbert Smitherman
Detroit Receiving Hospital

Maureen Taylor
Michigan Welfare Rights Organization

Dr. Alexis Travis
Michigan Aging and Adult Services Agency



THURSDAY, MARCH 25 AT 4 P.M.

[FACEBOOK.COM/MICHIGANHHS](https://www.facebook.com/michiganhhs)

MDHHS EPIDEMIC ORDER

EFFECTIVE MARCH 22 THROUGH APRIL 19



Recreation and entertainment

- The following recreation and entertainment venues are open for enjoyment by individuals or groups of up to 25 persons: auditoriums; arenas; cinemas; concert halls; performance venues; sporting venues; stadiums; theaters; archery ranges; amusement parks; arcades; bingo halls; bowling alleys; gun ranges; laser tag; and trampoline parks.
- Indoor Facilities: must not exceed 50% of the limits established by the fire marshal, and must not exceed an overall total of 300 people.
- Outdoor Facilities: must not exceed 50% of the limits established by the fire marshal (if applicable), and must not exceed an overall total of 1000 people.
- Everyone must wear a face mask at all times, unless eating or drinking while seated in a designated area.
- Consumption of food or beverages is permitted only while seated in a designated area with a group of no more than 6 people.
- Groups must be spaced 6 feet apart.
- Large Indoor Stadiums/Arenas: up to 375 patrons for large venues with a seating capacity up to 10,000 seats, and up to 750 patrons for large venues with a seating capacity greater than 10,000 seats.

Outdoor stadiums or arenas

- Gatherings may be permitted up to 20% capacity in an OUTDOOR stadium or arena, if they do all of the following:
 - "Stadiums and arenas" are venues with fixed seating for at least 5,000 spectators.
 - Establish and abide by an infection control plan that complies with the protocols included in MDHHS's Enhanced Outdoor Stadium and Arena Guidance.
 - Post their plan publicly.
 - Infection control plans must be made available to the local health department and MDHHS at least seven days before scheduled events.
 - Outdoor stadiums and arenas that do not establish and abide by an infection control plan in accordance with MDHHS's Enhanced Outdoor Stadium and Arena Guidance must not exceed an overall total of 1000 people.
 - Sports organizers of events occurring at outdoor stadiums must administer a testing program as specified in MDHHS's Interim Guidance for Athletics all players.

Food service

- Indoor and outdoor dining is only allowed until 11 p.m. and in designated dining areas where patrons are seated, groups of patrons do not exceed 6 people at a table, and each table is separated by at least 6 feet. See the [Outdoor Seating Infographic](#) for more details.
- Indoor dining at restaurants and bars is permitted up to 50% normal seating capacity or 100 persons, whichever is less.
- Outdoor dining is permitted at 100% capacity.
- Food service for takeout and delivery is permitted.
- Dining in an igloo, hut, or small tent is permitted so long as there is only one group inside.



Limits on attendance at residential gatherings.

- Face masks are required at all times, unless eating or drinking. Fully vaccinated individuals (persons for who at least two weeks has passed after receiving the final dose of a FDA-approved or authorized COVID-19 vaccine) may remove their mask as long as not exhibiting symptoms of COVID-19.
- Residents should follow MDHHS [guidelines for safe social gatherings](#) and are encouraged to form a "pod" of people to socialize with consistently.

INDOORS: UP TO 15 PERSONS FROM 3 HOUSEHOLDS

OUTDOORS: UP TO 50 PERSONS

Limits on attendance at non-residential gatherings.

- Everyone must wear a face mask at all times, unless eating or drinking while seated in a designated area.
- Consumption of food or beverages is permitted only while seated in a designated area with a group of no more than 6 people.
- While eating or drinking, each group must be at least 6 feet apart and may not intermingle.

INDOORS: UP TO 25 PERSONS

OUTDOORS: UP TO 300 PERSONS

"Gathering" means any occurrence where two or more persons from more than one household are present in a shared space. Incidental gatherings (where people do not mingle with others outside their group) are exempted. For more information on gathering rules, please see the FAQs.

Face masks are still required.

Businesses, government offices, schools, child care organizations, operators of public transit, and all other gathering organizers must not allow indoor or outdoor gatherings of any kind unless they require individuals to wear a face mask. These entities may not assume that someone who enters the business without a face mask falls in one of the exceptions; but may accept an individual's verbal representation that they are not wearing a face mask because they fall within a specified exception.

Retail and personal services

- Gatherings at a retail setting, library or museum, may not exceed 50% of total occupancy limits established by the fire marshal. Spaces for indoor dining, including food courts, must comply with the requirements for food service establishments.
- Gatherings to receive personal care services, including hair, nail, tanning, massage, spa, tattoo, body art, and piercing services are permitted by appointment. Masks must be worn at all times except if a customer is receiving a medical or personal care service for which the removal of the face mask is necessary.

Additional Resources:

- [Gathering and Face Mask Order](#)
- [Enhanced Outdoor Stadium and Arena Guidance](#)
- [Dining Guide](#)
- [Epidemic Order FAQ](#)





Exercise, fitness, and sports

- **Exercise facilities:** Gatherings are permitted both indoors and outdoors for individual exercise, group classes, and individual and group instruction. Exercise facilities include gymnasiums; fitness centers; exercise studios; tracks; sports complexes, pools, yoga, dance, gymnastics, and cycling studios; ice rinks; roller rinks; and trampoline parks.
 - Attendance must not exceed 30% of the total occupancy limits.
 - There must be at least 6 feet of distance between each occupied workout station
 - Spaces and activities must be set up to maintain 6 feet between all persons at all times.
 - Masks are required, except for swimming.
- Capacity limits for ice and roller rinks must not exceed 10 persons per 1,000 square feet (approximately 175 people at once on a typically sized rink).
- **Youth Sports** Beginning April 2nd, athletes ages 13 – 19 are required to be tested consistent with the testing protocol specified in MDHHS Interim Guidance for Athletics. A mask must be worn unless a sports organizer has deemed a type of sport to be unsafe to play while masked and a more frequent testing protocol is followed. All participants across the entire organization must be tested consistent with the testing protocol specified in MDHHS Interim Guidance for Athletics.
- For more information on sports and athletics: [Coronavirus - Sports and Athletics \(michigan.gov\)](https://www.michigan.gov/coronavirus/0,9753,7-406-98178_105410_105423_105477---,00.html).

- All individuals ages 13 – 19 participating in contact and non-contact athletic activities must test for COVID-19 on a weekly basis.
- This is for all school sponsored and non-school sponsored youth athletics effective April 2, 2021.
- For non-school sponsored athletics, any athlete who is or becomes 13 years old while participating in the sport must follow this guidance.

https://www.michigan.gov/coronavirus/0,9753,7-406-98178_105410_105423_105477---,00.html

COVID-19 Vaccine Updates

5 VACCINE STRATEGIES



Get more people vaccinated

Expand capacity as much as possible, prioritizing those vulnerable to severe disease and exposure and ensuring equity throughout process



Build a robust network of vaccination sites

Ensure all Allegan County community has equitable access to vaccines



Promote efficiency in vaccine delivery and administration

Maximize MDHHS local allocation of vaccine while driving towards eliminating disparities in vaccine administration and maximizing operational efficiency



Mobilize personnel to maximize vaccination efforts

Leverage human resource capital and partnerships to support vaccination efforts



Empower people with information to gain confidence to get vaccinated

Build a targeted communication effort that aligns with MDHHS to assure Allegan County communities have access to timely, accurate, and understandable information on vaccines.

Allegan County COVID-19 Vaccine Plan

Estimated schedule for first doses administered

Phase	People covered	Dec	Jan	Feb	March	April	May	June	July	Aug	Sept	Oct	Nov	Dec	
1A	Healthcare workers	[Green bar]													
	Long term care residents and staff	[Green bar]	[Green bar]												
1B	75 years+ not covered above	[Green bar]													
	Prioritized frontline responders	[Green bar]													
	School and child care staff	[Green bar]													
	Corrections staff and detained individuals	[Green bar]													
	Agriculture/food processing workers	[Green bar]													
	Other essential frontline workers	[Green bar]													
1C	65-74 years old	[Green bar]													
	50-64 with disabilities/pre-existing conditions	[Green bar]													
	Caregivers of children with special health care needs	[Green bar]													
	16-49 with disabilities/pre-existing conditions	[Green bar]													
	Remaining essential workers	[Green bar]													
2	50 to 64 years not covered above	[Green bar]													
	16 to 49 years not covered above	[Green bar]													

Allocation Process

MDHHS allocates to local jurisdictions
based on Social Vulnerability Index



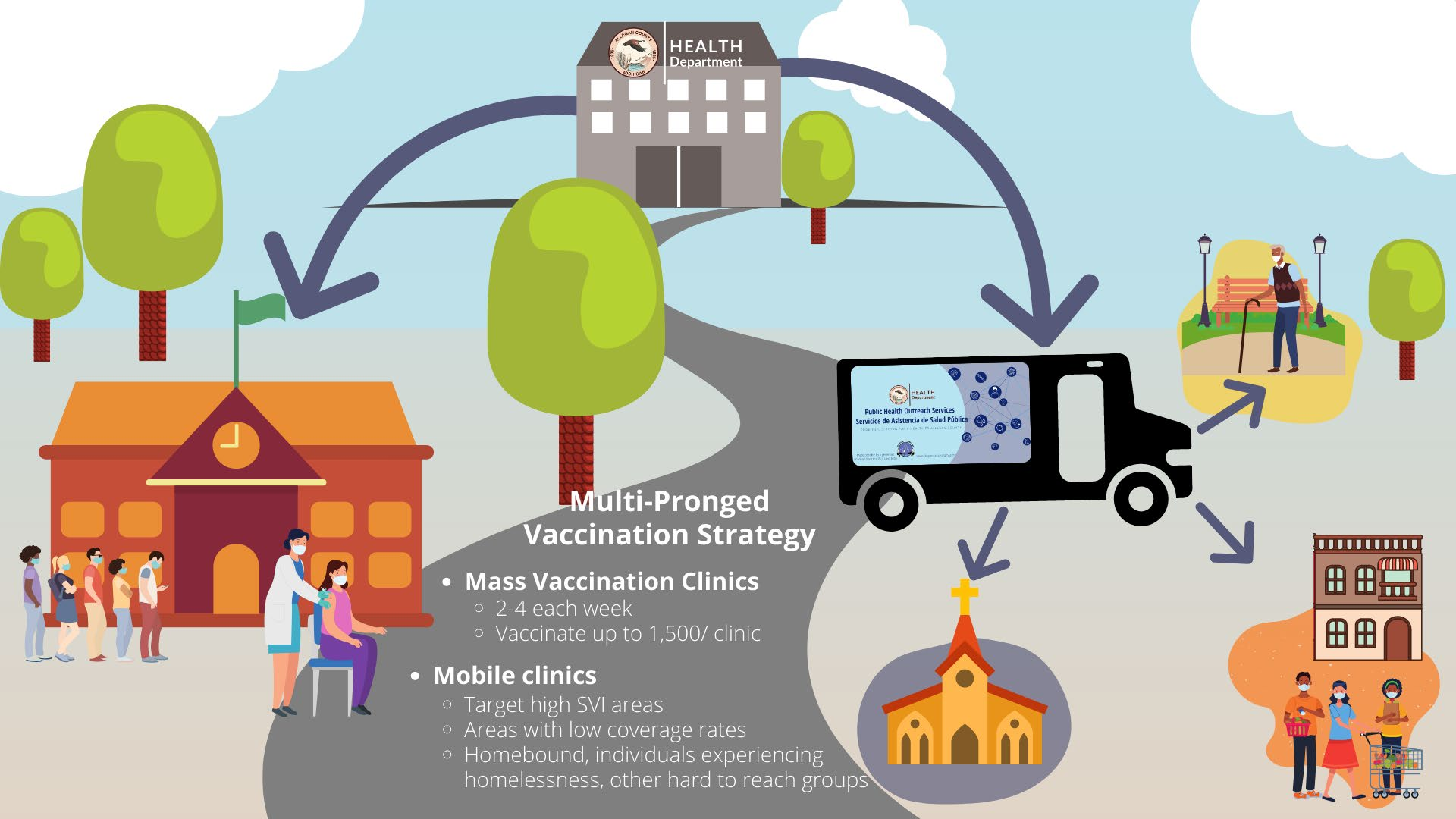
Allegan County Health Department



75% of ACHD's allocation goes
to those 50 years+



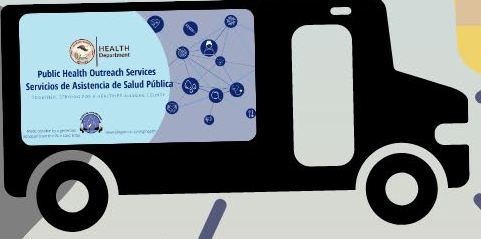
25% of ACHD's allocation goes to
other eligible groups



HEALTH
Department

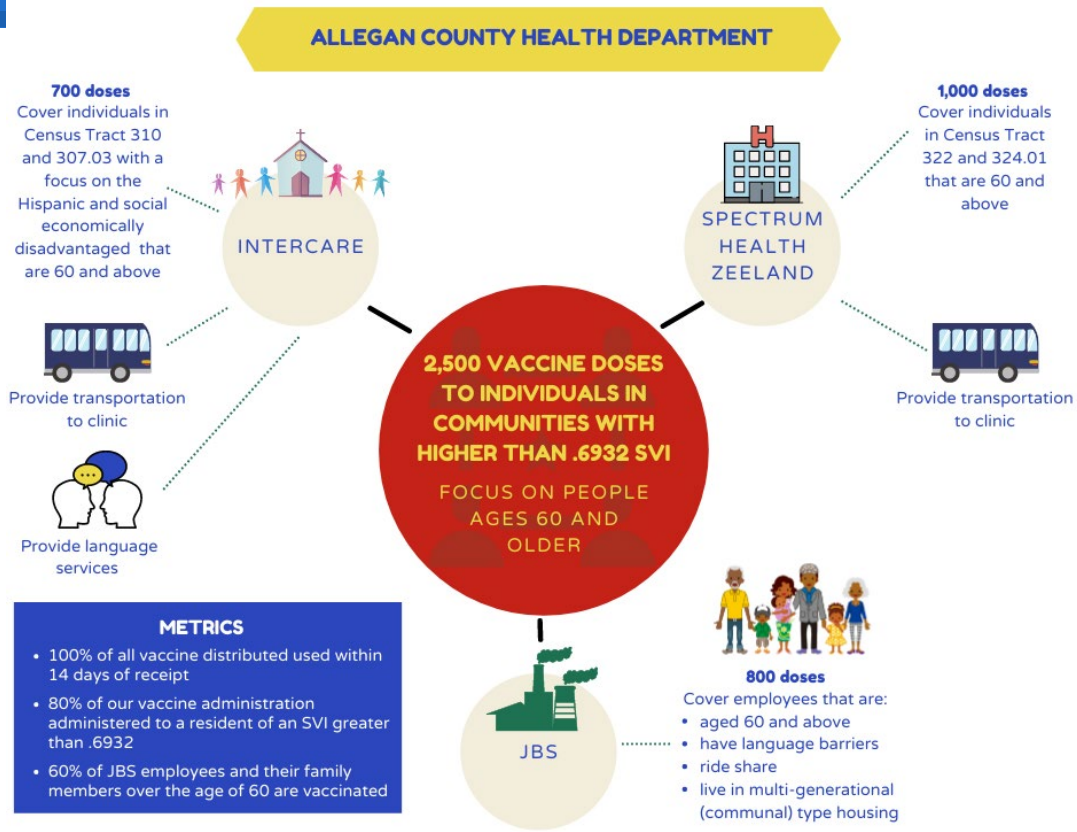
Multi-Pronged Vaccination Strategy

- **Mass Vaccination Clinics**
 - 2-4 each week
 - Vaccinate up to 1,500/ clinic
- **Mobile clinics**
 - Target high SVI areas
 - Areas with low coverage rates
 - Homebound, individuals experiencing homelessness, other hard to reach groups



Community Outreach 60 and Older Vaccine Project

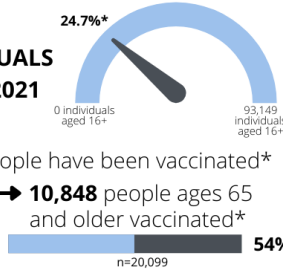
- ▶ Redistributed 1,250 doses to partners (Intercare and Spectrum Health Zeeland)
- ▶ Vaccinated 874 individuals at JBS
- ▶ Received another 500 doses this week from state towards project
- ▶ Building trust and educating on vaccine helps address vaccine hesitancy



Allegan County VACCINE DATA

70% OF ELIGIBLE INDIVIDUALS VACCINATED BY END OF 2021

As of March 21, **23,041** people have been vaccinated*



*Individuals given at least 1 dose of vaccine

Over 1 in 8 Allegan County individuals are fully vaccinated.

Over 3 in 10 Allegan County individuals aged 65 and older are fully vaccinated.

Fully Vaccinated: Individuals receiving 2 doses of Pfizer or Moderna or 1 dose of J&J

Total Doses Distributed*

22,990

*Includes 1st and 2nd doses. The total number of vaccine doses the jurisdiction has been allocated. Based on allocation process established by MDHHS.

Total Doses Administered*

34,201

*Includes 1st and 2nd doses and based on person's residence. Individuals who live in Allegan County may get their vaccine out of jurisdiction. These numbers would reflect the distribution to other jurisdictions, but appear on doses administered for Allegan County. The vaccines allocated towards the Federal partnership with long-term care facilities (LTCF) do not count towards doses allocated to Allegan County, however they will appear on doses administered for Allegan County since the individuals at LTCF are residents of Allegan County.

PLANNED CLINICS March 21, 2021 to March 27, 2021

4 Clinics

2,954 First and second doses

Updated 3/23/21

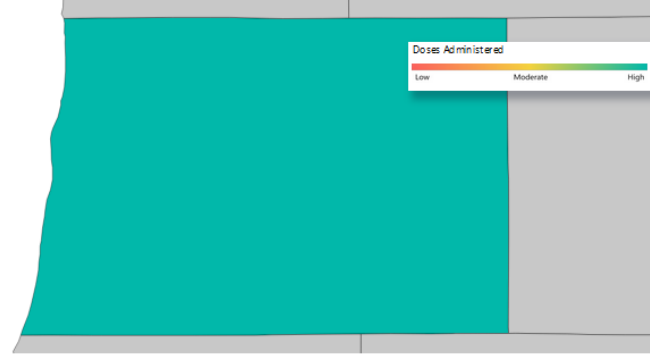


COVID Vaccine Doses Administered by Person's Residence

Dashboard Updated: March 23, 2021. Doses administered are reported according to where the patient lives and the date they were vaccinated. Non-Michigan residents vaccinated in Michigan can be found by selecting "Non-Michigan Resident" in the County drop-down.

Preparedness Region: All | Local Health Dept. Jurisdiction: Allegan County Health Depart... | County: All | Provider Type: All | Dose Number: All

COVID Doses Administered by County



Region 5

Data as of: 3/22/21

Week Ending Date

12/19/2020 | 3/27/2021

Sex

All

Age Group

All

Number of COVID Vaccine Doses Administered

34,759

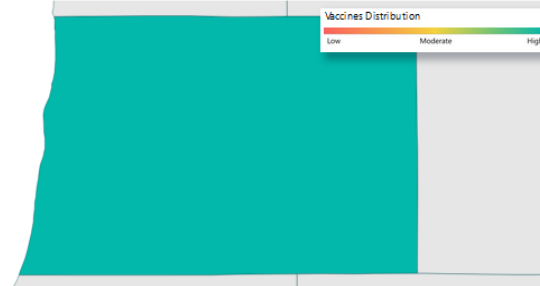
COVID Vaccine Distribution

Dashboard updated: March 23, 2021. Includes 1st and 2nd dose allotments. Dates refer to when an allotment was shipped by the distributor. NOT received by the provider. Doses are distributed to vaccine providers within the LHD jurisdiction.

Preparedness Region: All | Local Health Dept. Jurisdiction: Allegan County Health Department | Provider County: All | Data as of: 3/21/21

Distribution Date Range: 12/14/2020 | 3/22/2021 | Provider Type: All | Vaccine Type: All

COVID Vaccine Distribution by County



Region 5

Total Vaccines Distributed*

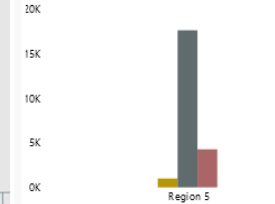
22,990

*425,260 doses were transferred to Federal Programs

Pfizer 4,290
Moderna 17,700
J&J 1,000

Doses Distributed by Preparedness Region (M = Million)

Vaccine Type ● J&J ● Moderna ● Pfizer



Do you want the COVID-19 Vaccine?

Sign up for COVID-19 Vaccine Notifications

Individuals **living** or **working** in Allegan County can complete the "I want the COVID-19 Vaccine" form found on

www.allegancounty.org/covid

If unable to complete the form online, call 211 or

ACHD's COVID-19 Hotline: 269-686-4546

Allegan County Health Department will notify you when you can make your COVID-19 vaccination appointment.

DISCLAIMER: Signing up for the COVID-19 Vaccine with Allegan County does not schedule your vaccine appointment. Allegan County Health Department is following the MDHHS Vaccination Prioritization Guidance and vaccine is available on a first come, first serve basis for the prioritization phases.

www.vaccinatewestmi.com

www.michigan.gov/COVIDvaccine



HEALTH
Department

¿Quieres la vacuna COVID-19? Inscríbese para recibir notificaciones sobre la vacuna COVID-19

Las personas que **viven** o **trabajan** en el condado de Allegan pueden completar el formulario "Quiero la vacuna COVID-19" que se encuentra en

www.allegancounty.org/covid

Si no puede completar el formulario en línea, llame al 211 o a nuestra línea directa COVID-19 al 269-686-4546

El Departamento de Salud del Condado de Allegan le notificará cuando puede hacer su cita para la vacunación COVID-19.


DESCARGO DE RESPONSABILIDAD: Inscribirse para la vacuna COVID-19 con el Condado de Allegan no programa su cita para la vacuna. El Departamento de Salud del Condado de Allegan está siguiendo la Guía de Priorización de Vacunación del MDHHS y la vacuna está disponible por orden de llegada para las fases de priorización.

www.vaccinatewestmi.com

www.michigan.gov/COVIDvaccine



HEALTH
Department

- 
- ▶ Vaccine Related Questions: Please direct to covidvaccine@allegancounty.org
 - ▶ If person does not have email access, it would be helpful to have your agency send covidvaccine@allegancounty.org with their name and number so we can connect with them.



Questions?