



**HEALTH**  
Department

# COVID-19 Update

April 7, 2021



# Allegan County COVID-19 Dashboard

Data as of 4/7/2021

<https://alleganco.maps.arcgis.com/apps/opsdashboard/index.html#/792287b41e3f485c97f968335b45ca6a>

## Two Week Snapshot

Total Cases: 654

Monitoring: 475

Deaths: 0

Hospitalizations: 10

Positivity Rate: 14.0%

Date Range: 3/18/21-3/31/21

## Two Week Cases by Age

0-9: 24

10-19: 118

20-29: 111

30-39: 83

40-49: 114

50-59: 98

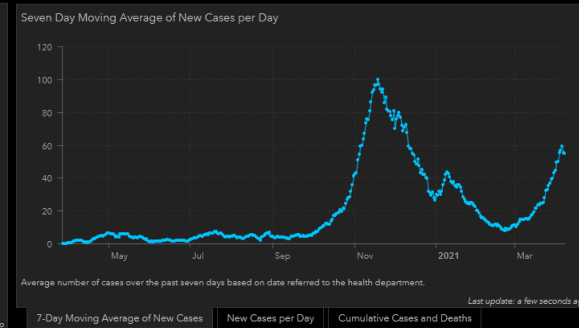
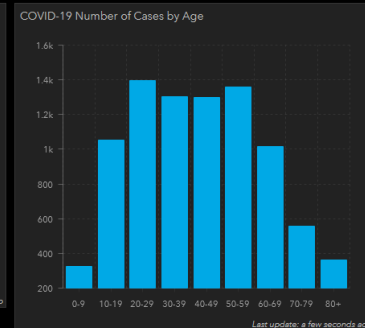
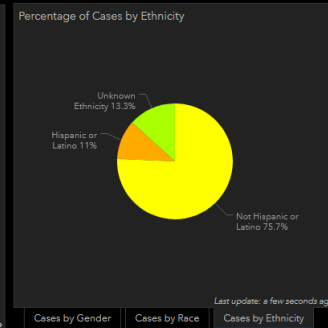
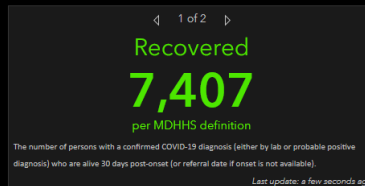
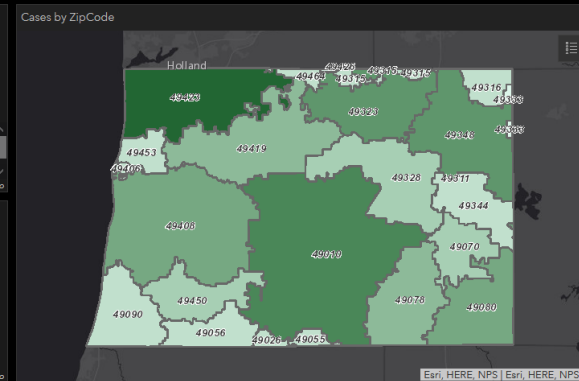
60-69: 69

70-79: 28

80+: 8

Unknown: 1

COVID-19 Dashboard



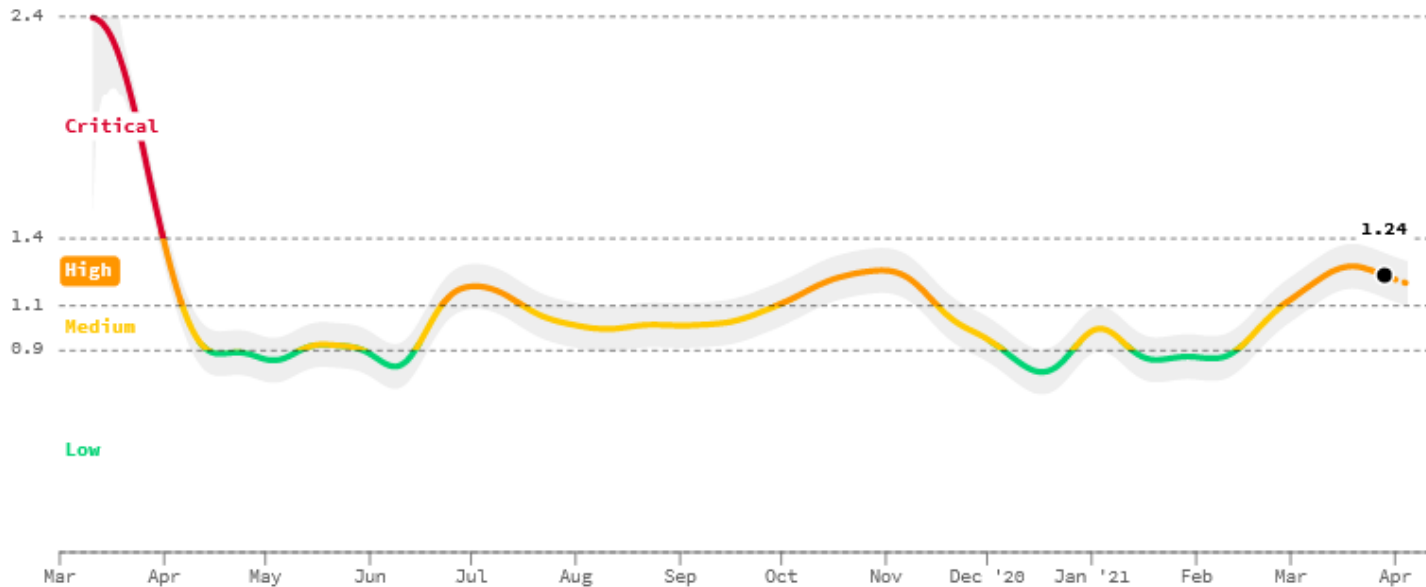
# Infection rate <sup>①</sup>

MICHIGAN

Save

Share

On average, each person in Michigan with COVID is infecting 1.24 other people. As such, the total number of active cases in Michigan is growing at an unsustainable rate. If this trend continues, the hospital system may become overloaded. Caution is warranted.



[Learn more about where our data comes from and how we calculate our metrics.](#)

Updated 4/6/2021



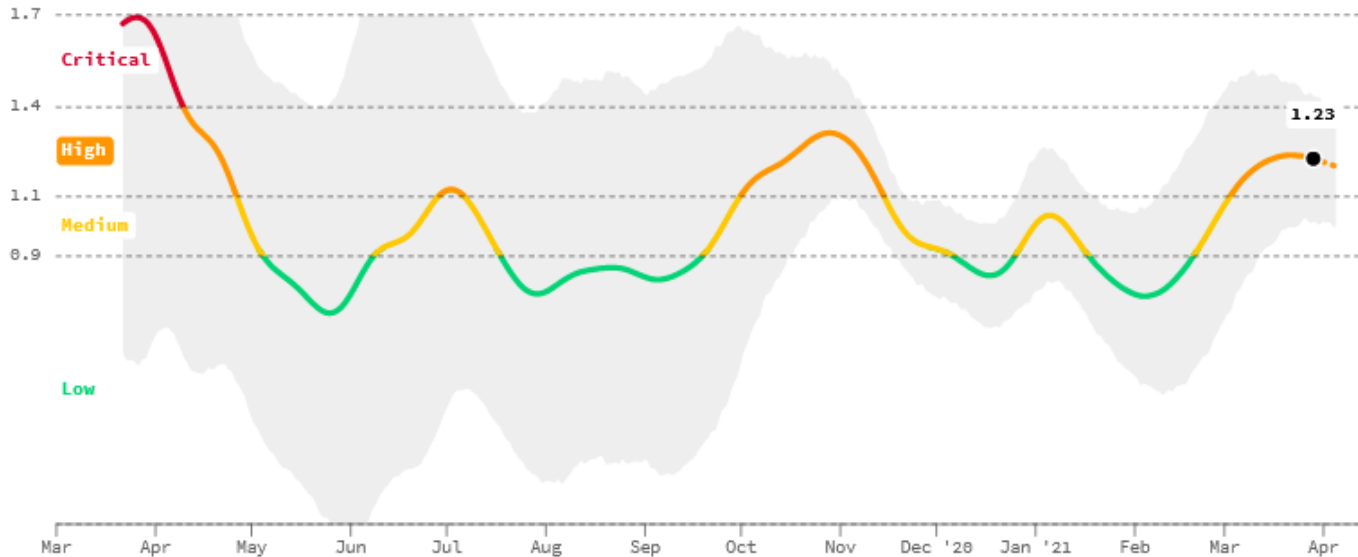
## Infection rate ⓘ

ALLEGAN COUNTY, MICHIGAN

Save

Share

On average, each person in Allegan County, Michigan with COVID is infecting 1.23 other people. As such, the total number of active cases in Allegan County, Michigan is growing at an unsustainable rate. If this trend continues, the hospital system may become overloaded. Caution is warranted.



Learn more about [where our data comes from](#) and [how we calculate our metrics](#).

Updated 4/6/2021

# COVID-19 Mass Testing and Containment

## MITIGATION ROADMAP



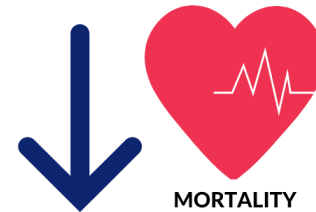
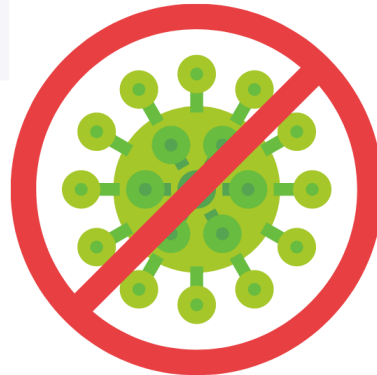
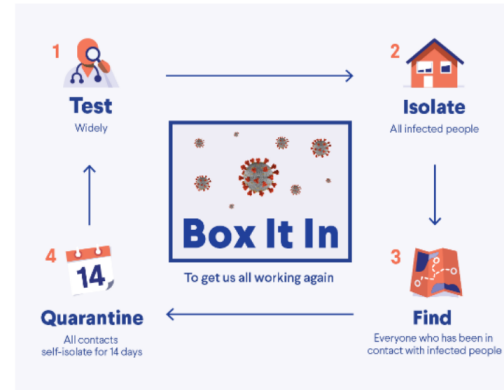
## INCIDENT ACTION PLAN OBJECTIVES

1. Identify cases, isolate the sick, quarantine the exposed, and protect vulnerable populations  
Provide information to the public, media, and County staff to increase public awareness, address misinformation, and protect the public and increase community resiliency
2. Prepare, mitigate, and recover from widespread transmission in Allegan County

## STATE & LOCAL ORDERS

Michigan Public Health Code

## EPIDEMIOLOGICAL MODEL



# Enhanced Ability to Test, <https://mistartmap.info/>

Allegheny County, data as of 4/2/2021

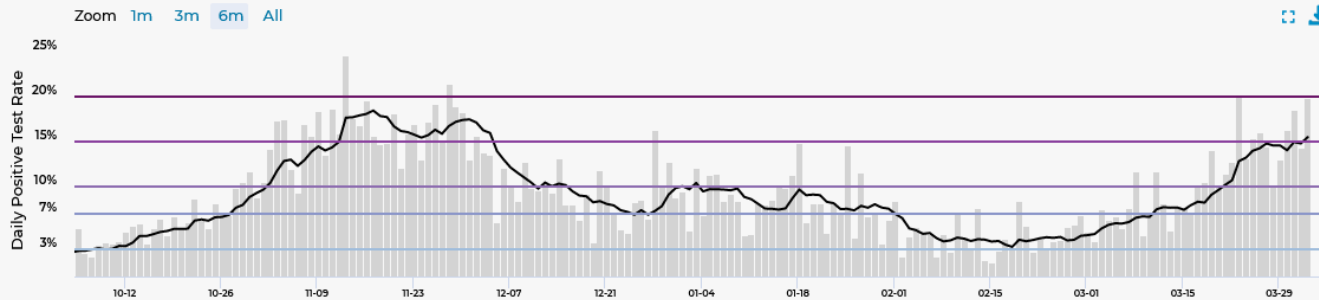
## Test Results

15.4%  
positive tests \*

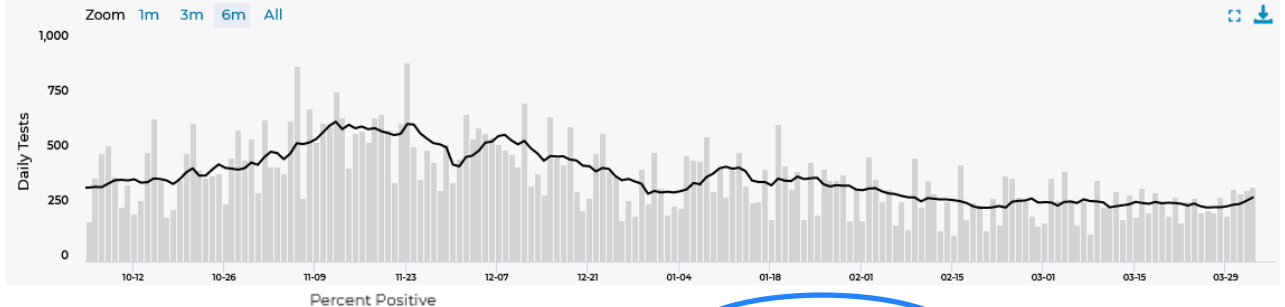
291.5  
daily tests  
administered \*

6 weeks ⓘ  
Feb 16 - Mar 30

Daily Positive Test Rate  
ALLEGHENY COUNTY



Daily Tests  
ALLEGHENY COUNTY



Low: <3%

A: 3-7%

B: 7-10%

C: 10-15%

D: 15-20%

E: >=20%

# New Cases, <https://mistartmap.info/>, Allegan County, data as of 4/2/2021

✓ New Cases

391.6  
daily/million \*

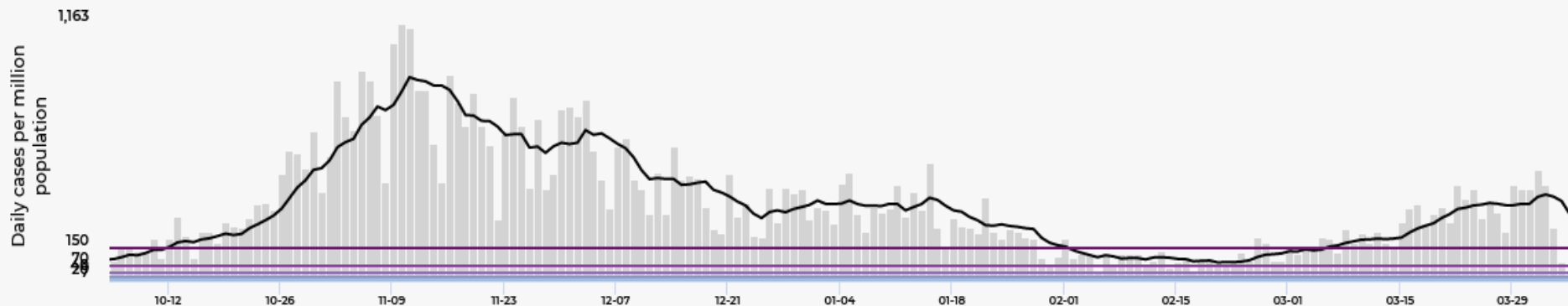
45.1  
daily \*



### Daily cases per million population

ALLEGAN COUNTY

Zoom 1m 3m 6m All



Cases Thresholds  
Per Million Per Day

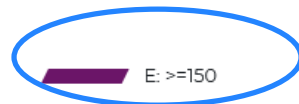
Low: <7

A: 7-20

B: 20-40

C: 40-70

D: 70-150



E: >=150

# Comparison with Neighboring Counties, <https://mi.startmap.info/>

Allegan County, data as of 4/5/2021

AREA	REGION RISK LEVEL (APR 03)	COUNTY RISK LEVEL (APR 05)	DAILY CASES PER MIL. (MAR 29)	CDC CASE TREND (APR 05)	% POSITIVE TESTS (APR 02)	% POSITIVE WEEKLY TREND (MAR 30)	DAILY TESTS PER MIL. (APR 02)
<a href="#">Allegan</a>		E	343.3		15.4%	6w	2,529.9
<a href="#">Barry</a>		E	385.3		15.7%	2w	2,533.3
<a href="#">Kalamazoo</a>		E	373.5		16.2%	6w	3,128.8
<a href="#">Kent</a>		E	373.3		13.1%	3w	4,130.6
<a href="#">Ottawa</a>		E	423.9		15.3%	4w	3,837.0
<a href="#">Van Buren</a>		E	309.3		18.6%	2w	3,220.7



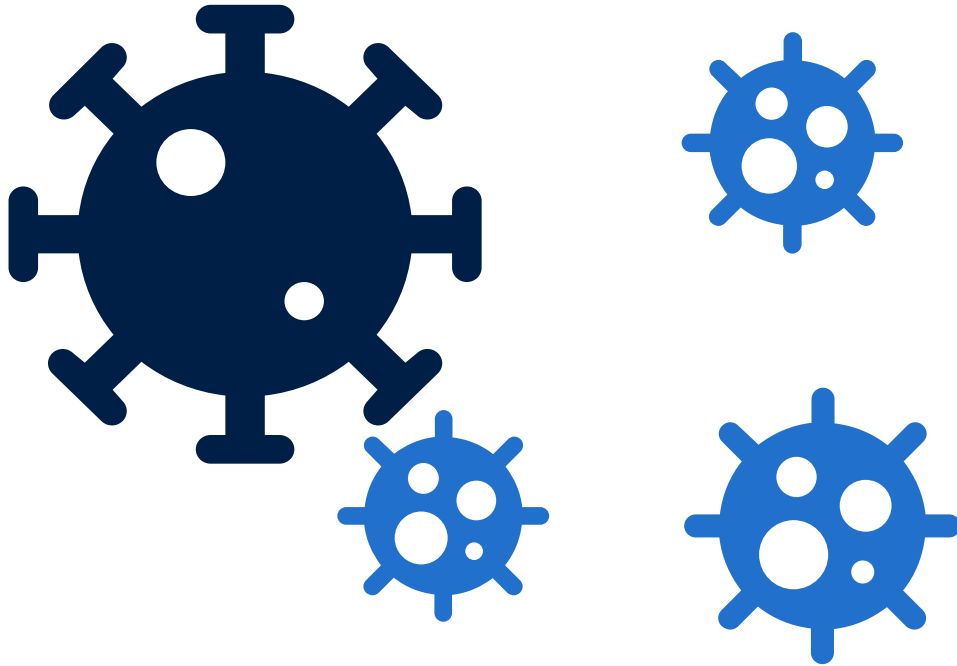
# Epidemiologic Information, Allegan County

Overall	Percent
Healthcare Worker	6.9%
Live or work in high-risk/congregate facility	10.4%
First Responder	1.1%
Other Essential Worker/Critical Infrastructure	15.8%
Healthcare Contact to confirmed care	0.7%
Community Contact to confirmed case	10.5%
Household Contact to confirmed case	16.8%
<b>Total Cases: 8,652</b>	

Cases Reported in Past two weeks	Percent
In quarantine at time of onset/positive test	15.2%
Associated with known cluster/outbreak	2.6%
Any Contact to confirmed case	18.0%
Healthcare contact to confirmed case	0.2%
Community contact to confirmed case	8.8%
Household contact to confirmed case	10.3%
Attended Community Event/Mass Gathering	1.4%
Any Travel (international, domestic, in state)	2.6%
Source of Infection is unknown	15.7%
<b>Number of cases reported in past 2 weeks: 804</b>	

# Clinical Information

Asymptomatic Cases: 13.8%



Symptoms	Percent
Fatigue/Lethargy/Weakness	69.3%
Cough	65.3%
Fever	48.8%
Chills	45.1%
Shortness of Breath	21.4%
Difficulty Breathing	14.7%
Muscle Aches (Myalgia)	56.0%
Headaches	67.4%
Runny Nose	48.9%
Nausea	23.2%
Congestion	59.5%
Sore Throat	40.8%
Diarrhea	24.6%
Loss of taste	42.5%
Loss of smell	42.3%

Data as of 4/6/2021

Source: Michigan Disease Surveillance System

## Breakdown of Cases by School Age Categories

Total Case Count	8652
Number of Cases <18 years	1085
% cases <18 years	12.5%

Data as of 4/6/2021.

Source: Michigan Disease Surveillance System

<u>Approximate Grade Level</u>	<u>Age</u>	<u>Case Count*</u>	<u>% total cases</u>	<u>% cases &lt;18 years</u>
	0-2 years	81	0.9%	7.5%
Pre-K age	3-4 years	63	0.7%	5.8%
K-5th grade age	5-10 years	276	3.2%	25.4%
6-8th grade age	11-13 years	205	2.4%	18.9%
9-12th grade age	14-17 years	460	5.3%	42.4%

*\*Case counts are based on case ages, which have been grouped into approximate grade levels.*

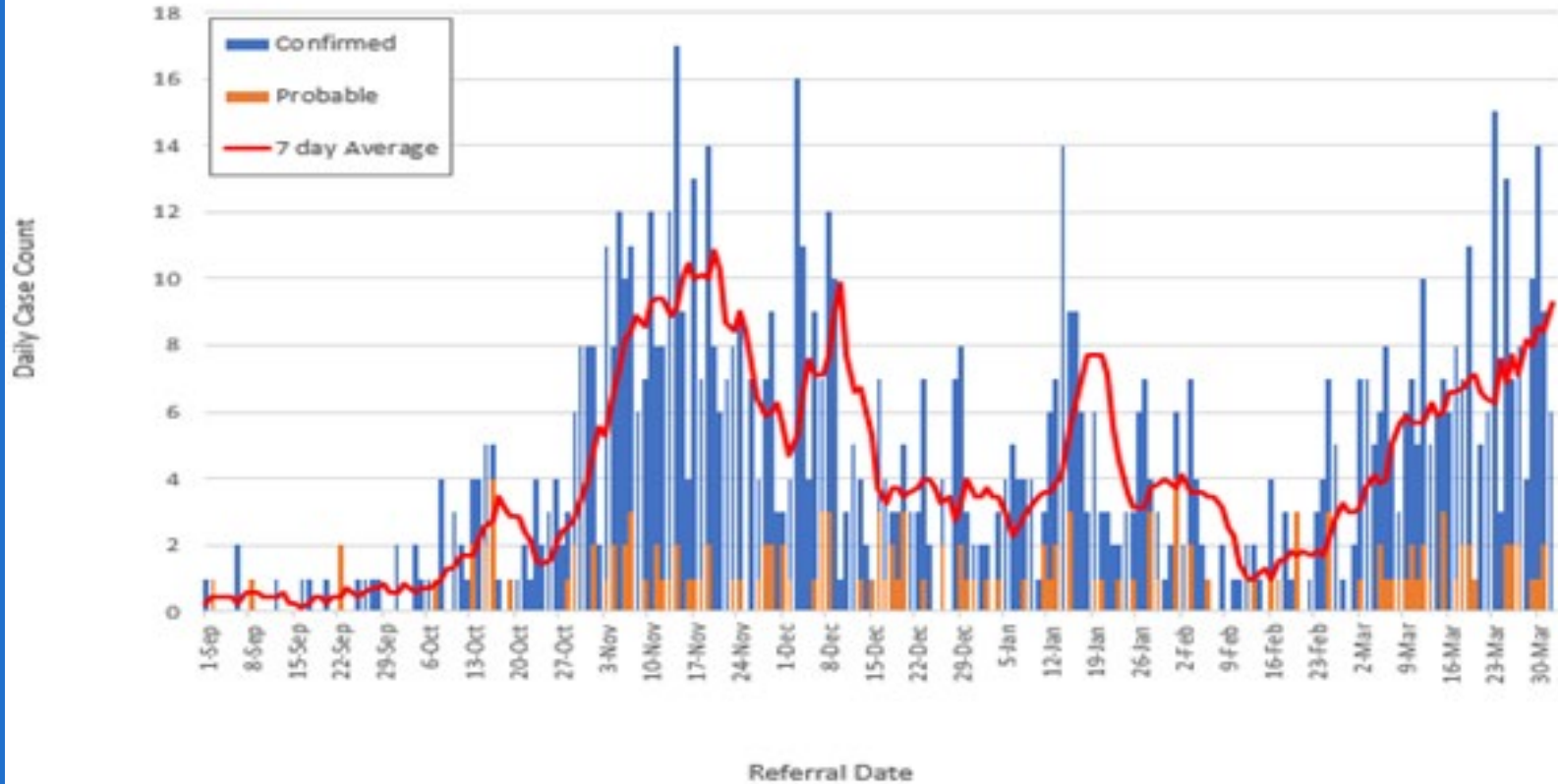
*These counts may not reflect the actual grade level of cases.*

*To prevent double-counting of cases, the age brackets do not overlap.*

### Case count by age, data from 3/23/21-4/6/21 (2 weeks)

0-2 years	3-4 years	5-10 years	11-13 years	14-17 years
8	5	33	26	57

Alleghan County School Age COVID-19 Cases by Referral Date



# Sufficient Health Care Capacity

Statewide Hospital Capacity Report for COVID-19\* 04/06/2021\*\*

	Hospital Beds	Adult Hospital Beds	Hospital Inpatient Beds	Hospital Inpatient Bed Occupancy	Adult Hospital Inpatient Beds	Adult Hospital Inpatient Bed Occupancy	ICU Beds	ICU Bed Occupancy	Adult ICU Beds	Adult ICU Bed Occupancy	Total Ventilators	Mechanical Ventilators in use
<b>Region 5</b>	1672	1602	1386	1078	1369	1055	197	140	162	135	326	70
<b>Region 6</b>	3,455	2872	3091	2295	2,667	2020	404	329	250	202	580	118

HCC Region	Region 5	Region 6
Total Hospitalized Adult Suspected/Confirmed	178	309
Adult Confirmed-Positive COVID	170	284
Hospitalized Peds Confirmed/Suspected	0	4
Hospitalized Ped Confirmed-Positive	0	2
Hospitalized and Ventilated COVID	7	36
Adult ICU Confirmed/Suspected COVID	42	85
ICU Adult Confirmed-Positive COVID	41	84
Prev Day COVID Related ED Visits	162	239

Region 5	Region 6
↑	↑
↑	↑
↔	↔
↔	↓
↑	↑
↑	↑
↑	↑
↑	↑

**COVID-19 Metrics**  
04/6/21, by HCC Region

# Contact Tracing and Case Investigation Updates

- ▶ Due high case rate, there may be a delay in contacting individuals who tests positive for the virus or have been in close contact to someone who has COVID-19.
- ▶ You may receive a call or a text message to get your case investigation details. If you receive a text message, it will ask for your name and date of birth. Please also be sure to answer your phone, even if it's from an unknown number, since it could be MDHHS or ACHD calling to complete your case investigation.

# Continue to Take Action

- ▶ If you receive a positive COVID-19 test result, [isolate](#) for a minimum of 10 days from the start of your symptom(s) or your positive test date if you didn't have symptoms.
- ▶ Notify your close contacts that they may have been exposed and encourage them to [quarantine](#) for 14 days from their last date of contact with you.
- ▶ If you know you are a close contact, start self-quarantine.
- ▶ If you need a letter to return to work if you have been under isolation or quarantine, please complete the self-reporting form found on [www.allegancounty.org/covid](http://www.allegancounty.org/covid)

# Quarantine Guidance

- ▶ Due to COVID-19 variant spread across Michigan, ACHD is following MDHHS guidance on reinstating a standard 14-day quarantine for close contacts of COVID-19 cases.
- ▶ This removes the option of a 10-day quarantine for non-variant cases.
- ▶ ACHD does not support individuals to test out of quarantine or use the 7 day quarantine with testing option.
- ▶ Exceptions to quarantine: people who have had COVID-19 within the last 90 days or who are fully vaccinated





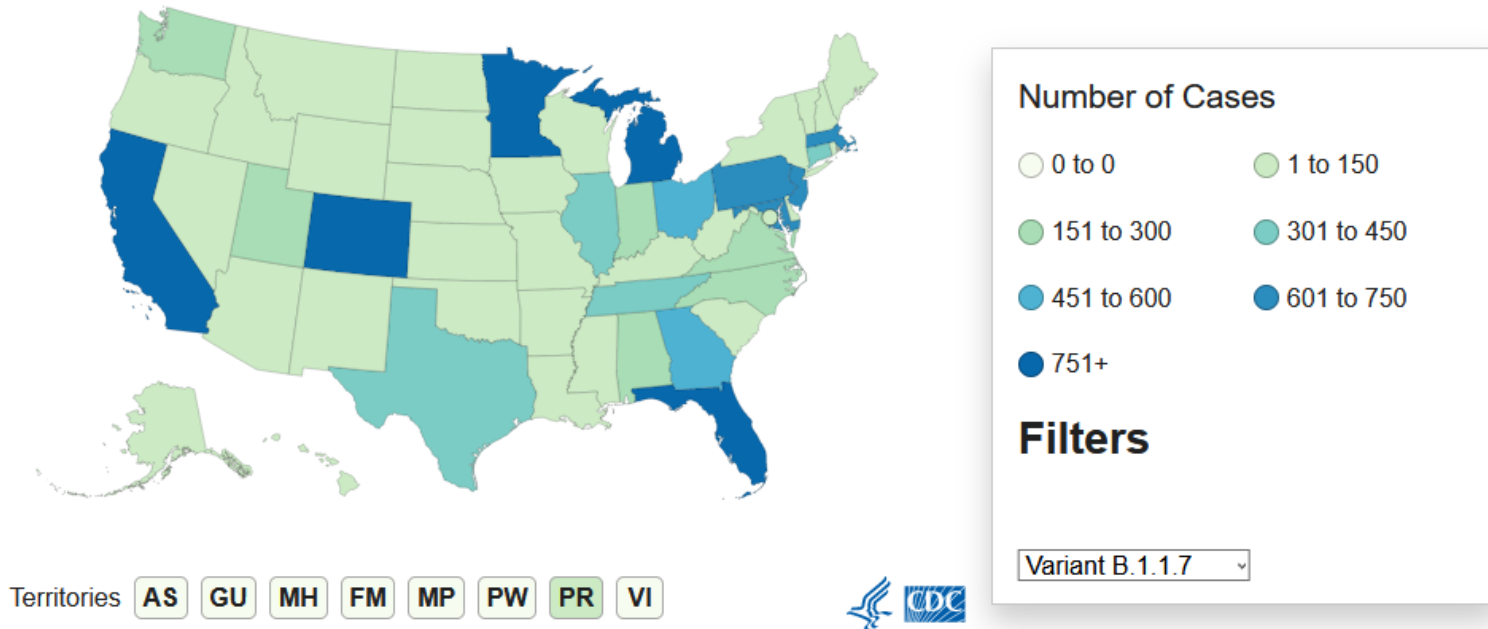
## Allegheny County Cases of B.1.1.7: 3

MI Cases of B.1.351 (South Africa): 7

MI Cases of B.1.1.7 (UK): 1,649

MI Cases of P.1 Variant (Brazil): 1

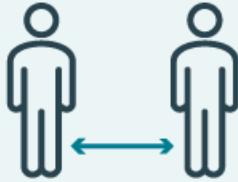
### Cases of Variants of Concern in the United States\*†



# With the variants and virus still present in our community, remember to



WEAR A MASK



STAY 6 FEET APART



AVOID CROWDS



GET A VACCINE

# CDC Updates Travel Guidance for Fully Vaccinated Individuals

## International Travel

RECOMMENDATIONS AND REQUIREMENTS

Not Vaccinated

Fully Vaccinated

Get tested 1-3 days before traveling out of the US



Mandatory test required before flying to US



Get tested 3-5 days after travel



Self-quarantine after travel for 7 days with a negative test or 10 days without test



Self-monitor for symptoms



Wear a mask and take other precautions during travel



## Domestic Travel

RECOMMENDATIONS AND REQUIREMENTS

Not Vaccinated

Fully Vaccinated

Get tested 1-3 days before travel



Get tested 3-5 days after travel and self-quarantine for 7 days. Self-quarantine for 10 days if you don't get tested.



Self-monitor for symptoms



Wear a mask and take other precautions during travel



# MDHHS Updates

## MI Safe Schools Testing Program

- Free antigen testing for PreK-12 educators, staff & students in Michigan schools. The new program is called the MI Safe Schools Testing Program, and over 400 schools and 12,000 educators are signed up for this free, weekly testing.
- MDHHS provides all the virtual training and technical assistance with setting the program up. School administrators can go to [www.Michigan.gov/schoolCOVIDtesting](http://www.Michigan.gov/schoolCOVIDtesting) to find out more, get trained, and enroll their schools.
- People can go to [www.Michigan.gov/covidantigen](http://www.Michigan.gov/covidantigen) to learn all about the free resources for testing available from MDHHS.



## MDHHS Epidemic Order in effect until April 19:

- [Gathering and Face Mask Order](#)
- [Enhanced Outdoor Stadium and Arena Guidance](#)
- [Dining Guide](#)
- [Epidemic Order FAQ](#)

# COVID-19 Vaccine Updates

# 5 VACCINE STRATEGIES



## Get more people vaccinated

Expand capacity as much as possible, prioritizing those vulnerable to severe disease and exposure and ensuring equity throughout process



## Build a robust network of vaccination sites

Ensure all Allegan County community has equitable access to vaccines



## Promote efficiency in vaccine delivery and administration

Maximize MDHHS local allocation of vaccine while driving towards eliminating disparities in vaccine administration and maximizing operational efficiency



## Mobilize personnel to maximize vaccination efforts

Leverage human resource capital and partnerships to support vaccination efforts



## Empower people with information to gain confidence to get vaccinated

Build a targeted communication effort that aligns with MDHHS to assure Allegan County communities have access to timely, accurate, and understandable information on vaccines.

# Allegan County COVID-19 Vaccine Plan

Estimated schedule for first doses administered

Phase	People covered	Dec	Jan	Feb	March	April	May	June	July	Aug	Sept	Oct	Nov	Dec		
1A	Healthcare workers	[Green bar from Dec to Dec]														
	Long term care residents and staff	[Green bar from Jan to Dec]														
1B	75 years+ not covered above	[Green bar from Jan to Dec]														
	Prioritized frontline responders	[Green bar from Jan to Dec]														
	School and child care staff	[Green bar from Jan to Dec]														
	Corrections staff and detained individuals	[Green bar from Jan to Dec]														
	Agriculture/food processing workers	[Green bar from March 1st to Dec]														
	Other essential frontline workers	[Green bar from Jan to Dec]														
1C	65-74 years old	[Green bar from Jan to Dec]														
	50-64 with disabilities/pre-existing conditions	[Green bar from March 8th to Dec]														
	Caregivers of children with special health care needs	[Green bar from March 8th to Dec]														
	16-49 with disabilities/pre-existing conditions	[Green bar from March 22nd to Dec]														
	Remaining essential workers	[Green bar from Jan to Dec]														
2	50 to 64 years not covered above	[Green bar from March 22nd to Dec]														
	16 to 49 years not covered above	[Green bar from April 5th to Dec]														

# Allocation Process

MDHHS allocates to local jurisdictions  
based on Social Vulnerability Index



Alleghan County Health Department

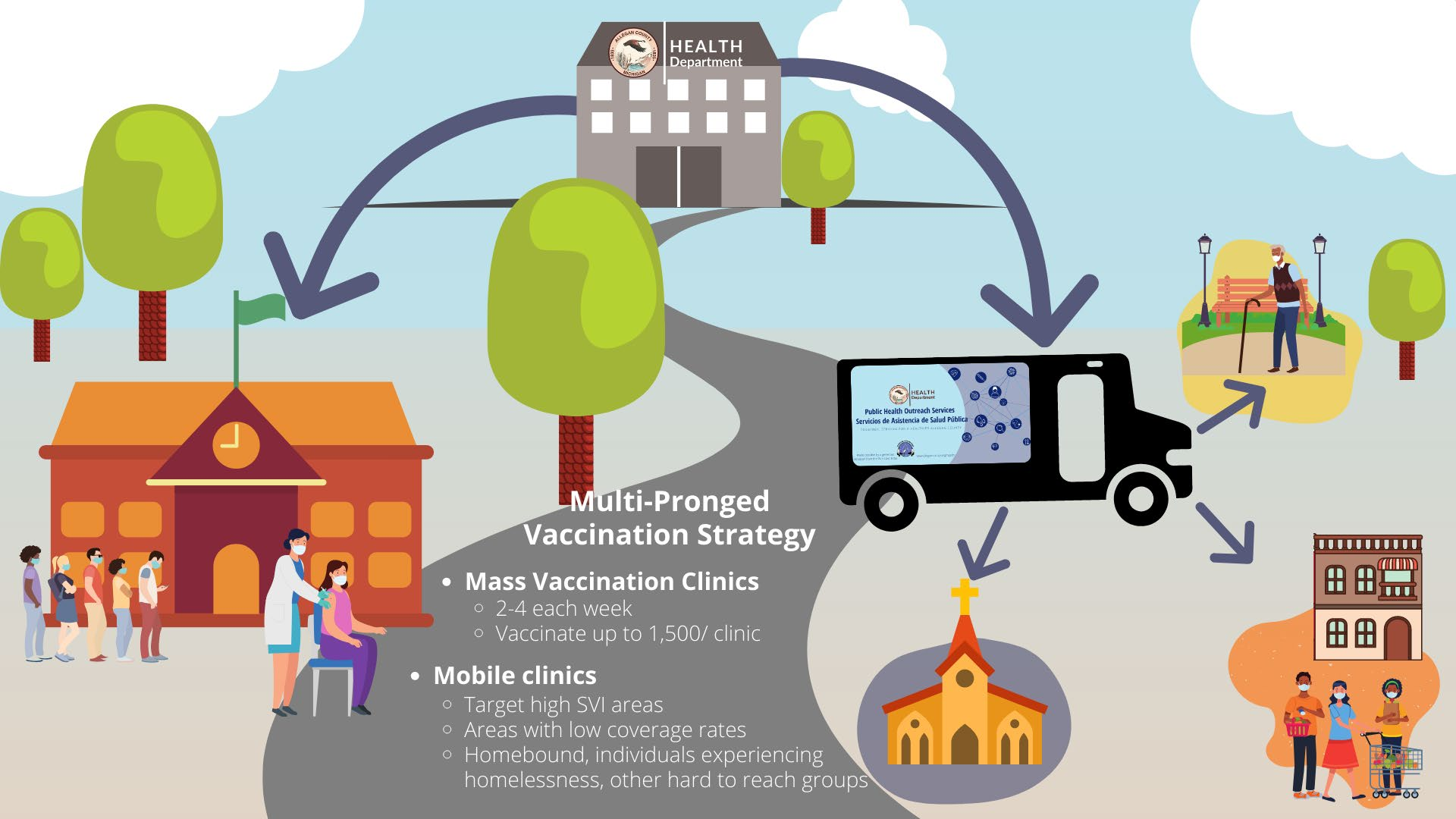


75% of ACHD's allocation goes  
to those 50 years+



25% of ACHD's allocation goes to  
other eligible groups

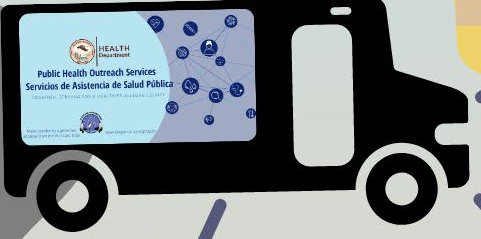




HEALTH Department

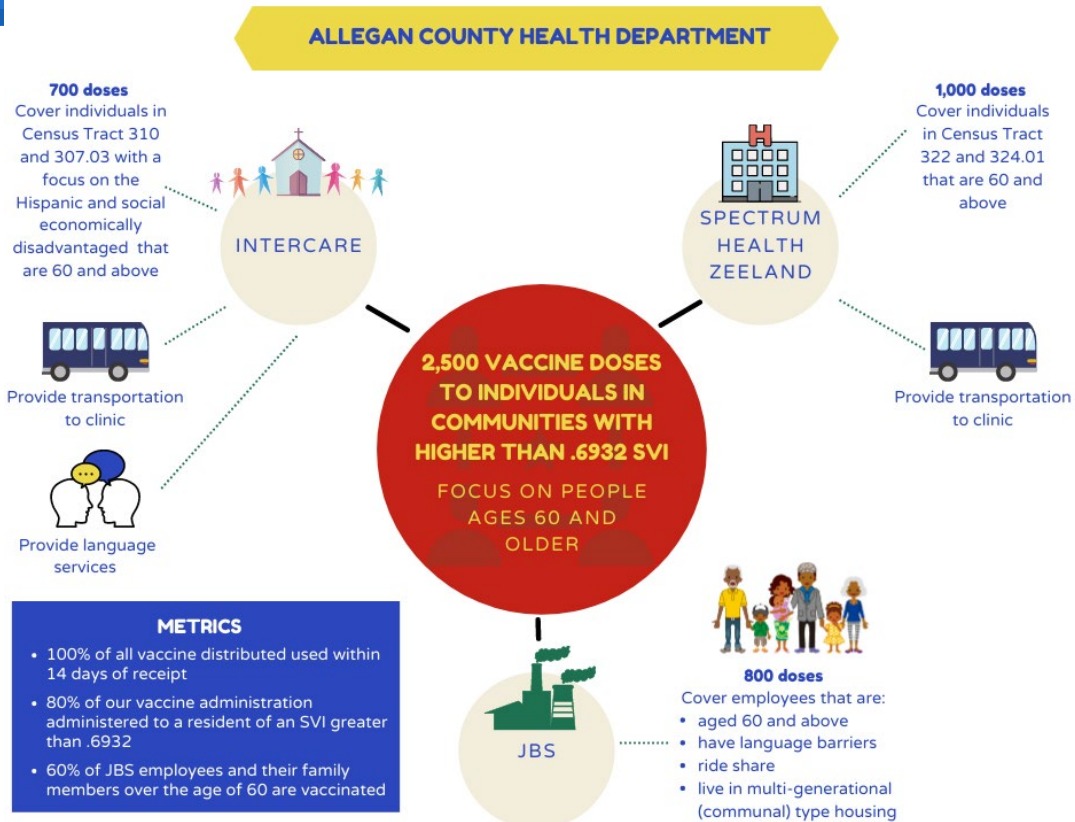
## Multi-Pronged Vaccination Strategy

- **Mass Vaccination Clinics**
  - 2-4 each week
  - Vaccinate up to 1,500/ clinic
- **Mobile clinics**
  - Target high SVI areas
  - Areas with low coverage rates
  - Homebound, individuals experiencing homelessness, other hard to reach groups



# Community Outreach 60 and Older Vaccine Project

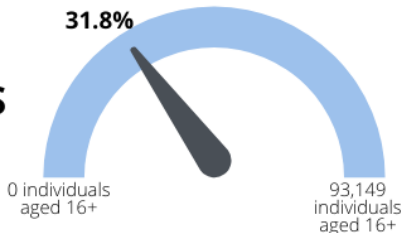
- ▶ 2<sup>nd</sup> doses are coming up with this project and wrapping up by end of next week.
- ▶ Offering another opportunity to get vaccinated for food processing workers





# Allegan County VACCINE DATA

## 70% OF ELIGIBLE INDIVIDUALS VACCINATED BY END OF 2021



As of April 4, **29,582** people have been vaccinated\*

→ **11,578** people ages 65 and older vaccinated\*



\*Individuals given at least 1 dose of vaccine

 **Over 2 in 11** Allegan County individuals are fully vaccinated.

→ **About 5 in 11** Allegan County individuals aged 65 and older are fully vaccinated.

**Fully Vaccinated:** Individuals receiving 2 doses of Pfizer or Moderna or 1 dose of J&J.

Total Doses Distributed\*

# 35,270

\*includes 1st and 2nd doses. The total number of vaccine doses the jurisdiction has been allocated. Based on allocation process established by MDHHS.

Total Doses Administered\*

# 45,929

\*includes 1st and 2nd doses and based on person's residence. Individuals who live in Allegan County may get their vaccine out of jurisdiction. These numbers would reflect the distribution to other jurisdictions, but appear on doses administered for Allegan County. The vaccines allocated towards the Federal partnership with long-term care facilities (LTCF) do not count towards doses allocated to Allegan County, however they will appear on doses administered for Allegan County since the individuals at LTCF are residents of Allegan County.

## PLANNED CLINICS

April 4, 2021 to April 10, 2021

**5**  
Clinics



**3,062**  
First and second doses

Updated 4/6/21



HEALTH  
Department

# COVID-19 VACCINE

*What to expect when registering for the vaccine*

1

Fill out the "**I Want the COVID-19 Vaccine**" form at [www.allegancounty.org/covid](http://www.allegancounty.org/covid).

2

You will receive a confirmation email when it is your priority group. It can take **72 hours** for eligible individuals to be contacted for an appointment.

3

Once a vaccine is available for you, **we will send an email with an online link to schedule your appointment.** Those who do not have email will receive a phone call.

4

You will receive a confirmation email after registering for your vaccine appointment.

[www.vaccinatewestmi.com](http://www.vaccinatewestmi.com)

[www.michigan.gov/COVIDvaccine](http://www.michigan.gov/COVIDvaccine)



HEALTH  
Department



Questions?