



HEALTH
Department

COVID-19 Update

June 30, 2021



Allegan County COVID-19 Dashboard

Moving to updating weekly on Fridays at 3pm.

- ▶ <https://alleganco.maps.arcgis.com/apps/opsdashboard/index.html#/792287b41e3f485c97f968335b45ca6c>
- ▶ Allegan County's COVID-19 data is still updated Monday-Friday on the MDHHS COVID-19 website. Find the state's dashboard for COVID-19 cases and trends by visiting www.michigan.gov/coronavirus.

COVID-19 Cases by County

Confirmed cases include individuals with a positive NAAT/RT-PCR test for COVID-19. Probable cases include individuals with either a positive rapid antigen detection test [OR](#) COVID-19 symptoms and an epidemiologic link to a confirmed COVID-19 case, but no diagnostic test.

Cases by County

● 3212-11259



Allegan

Monday, June 28, 2021

Michigan (Statewide) Case Fatality Rate

2.2%

Current Totals

Case Status	Cases	Deaths
Confirmed	10,026	136
Probable	1,160	24
Total	11,186	160

Laboratory Testing

Test Type	Tests Performed
Diagnostic	125,129
Serology	3,135
Total	128,264

Cases

DAILY NEW CASES

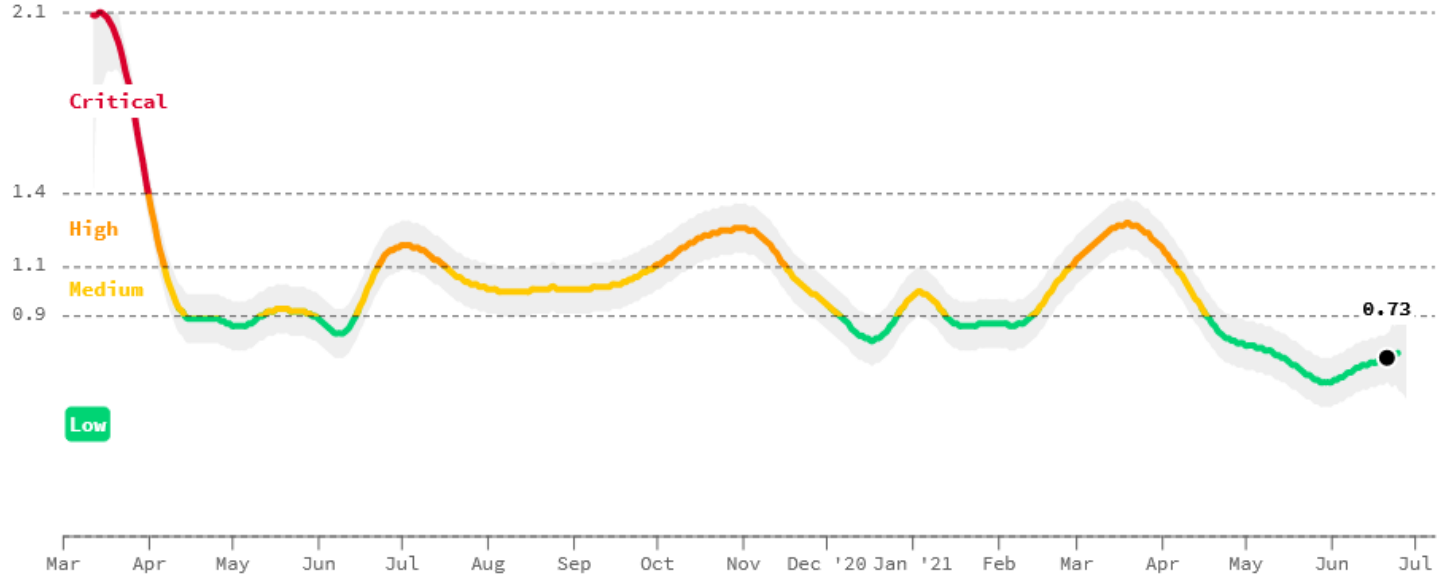
● **1.6** PER 100K

INFECTION RATE

● **0.73**

POSITIVE TEST RATE

● **1.1%**



On average, each person in Michigan with COVID is infecting 0.73 other people. Because each person is infecting fewer than one other person, the total number of current cases in Michigan is shrinking.

[About this data](#)

Share

Updated 6/29/2021

Cases

DAILY NEW CASES

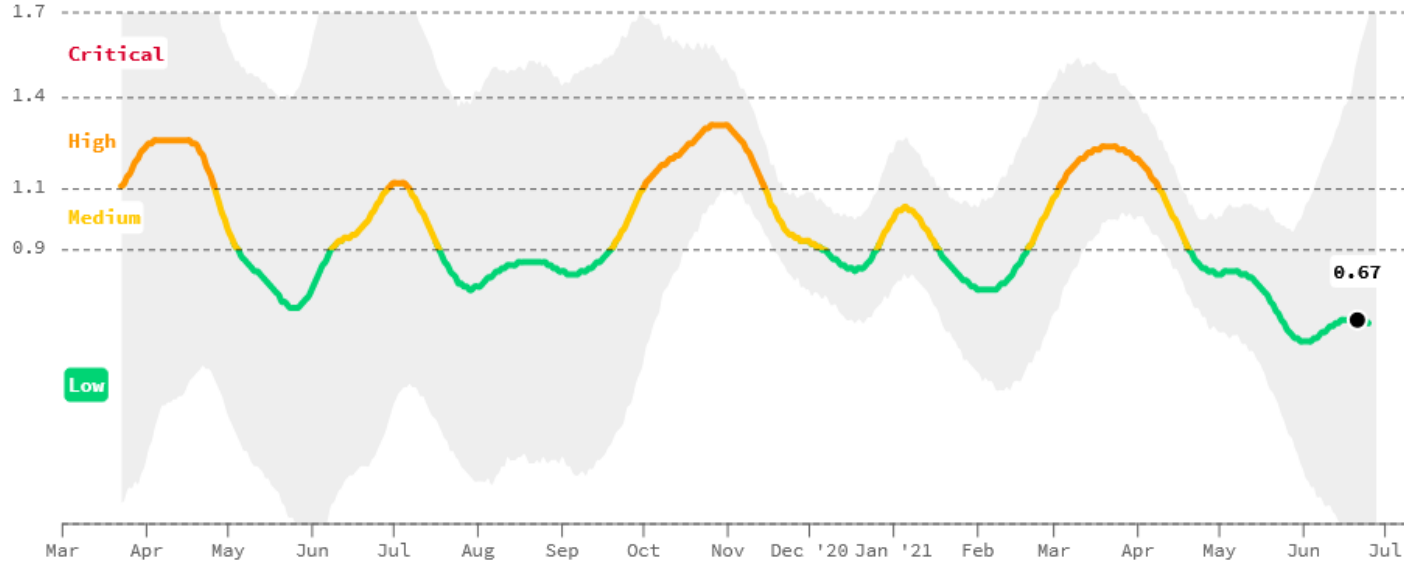
● **1.7** PER 100K

INFECTION RATE

● **0.67**

POSITIVE TEST RATE

● **3.0%**



On average, each person in Allegan County, Michigan with COVID is infecting 0.67 other people. Because each person is infecting fewer than one other person, the total number of current cases in Allegan County, Michigan is shrinking. [About this data](#)

Share

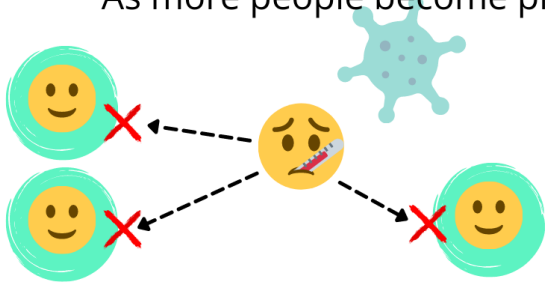
Updated 6/29/2021

COVID-19 Mass Testing and Containment

MITIGATION ROADMAP



As more people become protected, less virus is able to circulate



$$70\% \text{ community vaccinated} + \sim 10\% \text{ natural immunity} + \sim 20\text{-}30\% \text{ unknown infection}$$



HERD IMMUNITY



Keep in mind...

- ▶ Broad public health mandates were lifted 6/22/21, but COVID-19 is still present
- ▶ We want to prevent a 3rd surge, so practicing mitigation strategies is important
- ▶ As more virus transmission in community, there is more chance for variants to develop that have a higher morbidity/mortality rate and/or are vaccine resistant.



TOOLS THAT HELP PREVENT COVID-19 IN SCHOOLS/BUSINESSES



What we are trying to do is to get the virus transmission level so low in the community that it can't continue to spread.

- These tools by themselves are helpful, but when paired together, we can get to our intended outcome (low to no virus transmission) quicker.
 - As community transmission increases, we need more tools to help provide protection
 - As vaccination rate within a community increases, fewer tools need to be practiced since there is a layer of protection

Workplace and School Guidance has been updated

- ▶ Providing recommendations to help businesses make informed decisions about policies and practices regarding mitigation strategies

This guidance assists employers in providing a safe environment for employees and customers.

COVID-19 Workplace Toolkit

Updated June 23, 2021

2021-2022 COVID-19 School Guidance

Updated June 29, 2021

Enhanced Ability to Test, <https://mistartmap.info/>

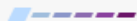
Alleghen County, data as of 6/26/2021

Test Results
Jun 18 - Jun 25

2.5%
positive tests *

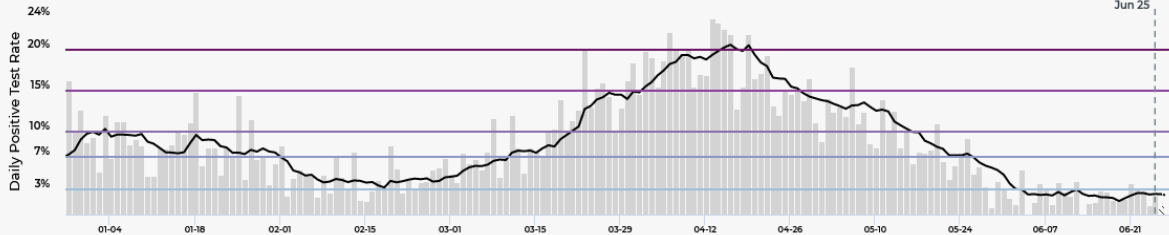
119.5
daily tests
administered *

2 weeks ⓘ
Jun 08 - Jun 22



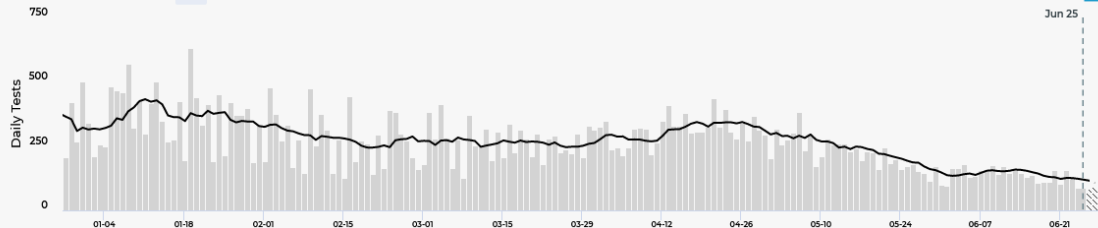
Daily Positive Test Rate
ALLEGHEN COUNTY

Zoom 1m 3m 6m All



Daily Tests
ALLEGHEN COUNTY

Zoom 1m 3m 6m All



Test Thresholds
Percent Positive

Low: <3%

A: 3-7%

B: 7-10%

C: 10-15%

D: 15-20%

E: >=20%

New Cases, <https://mistartmap.info/>, Allegan County, data as of 6/26/2021

New Cases
Jun 18 - Jun 25

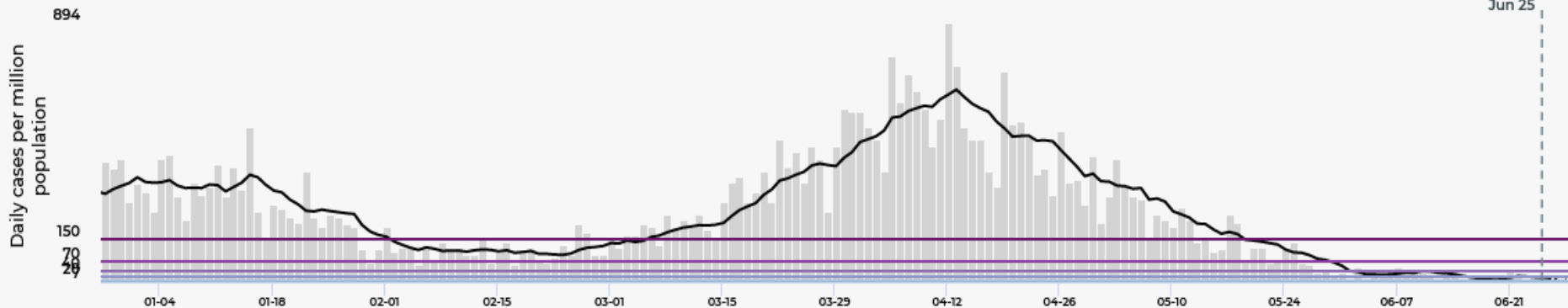
17.3
daily cases per million

2
daily cases

76 days ⓘ
Apr 11 - Jun 25

Daily cases per million population ALLEGAN COUNTY

Zoom 1m 3m 6m All



Risk Thresholds (Cases per Million)

Low: <7

A: 7-20

B: 20-40

C: 40-70

D: 70-150

E: >=150

Comparison with Neighboring Counties, <https://mistartmap.info/>

Allegan County, data as of 6/16/2021

AREA	REGION RISK LEVEL (JUN 12)	COUNTY RISK LEVEL (JUN 25)	DAILY CASES PER MIL. * (JUN 21)	CDC CASE TREND (JUN 21)	% POSITIVE TESTS * (JUN 25)	% POSITIVE WEEKLY TREND (JUN 22)	DAILY TESTS PER MIL. * (JUN 25)
Allegan	C	B	16.1	72d ↘	2.5%	2w ↗	1,037.4
Barry	C	A	9.5	69d ↘	1.3%	1w ↘	1,044.2
Kalamazoo	C	B	21.2	75d ↘	1.6%	1w ↗	1,226.6
Kent	C	B	19.7	72d ↘	1.8%	10w ↘	1,464.9
Ottawa	C	A	12.5	74d ↘	1.8%	10w ↘	1,230.7
Van Buren	C	A	11.3	72d ↘	1.8%	7w ↘	1,125.4

Epidemiologic Information, Allegan County

Overall	Percent
Healthcare Worker	6.3%
Live or work in high-risk/congregate facility	9.0%
First Responder	0.9%
Other Essential Worker/Critical Infrastructure	15.9%
Healthcare Contact to confirmed care	0.6%
Community Contact to confirmed case	10.1%
Household Contact to confirmed case	17.0%
Total Cases: 11,186	Asymptomatic Cases: 13.2%

Cases Reported in Past two weeks	Percent
In quarantine at time of onset/positive test	16.7%
Associated with known cluster/outbreak	3.3%
Any Contact to confirmed case	10.0%
Healthcare contact to confirmed case	0.0%
Community contact to confirmed case	0.0%
Household contact to confirmed case	10.0%
Attended Community Event/Mass Gathering	3.3%
Any Travel (international, domestic, in state)	0.0%
Source of Infection is unknown	60.0%
Number of cases reported in past 2 weeks: 30	

Breakdown of Cases by School Age Categories

Total Case Count	11186	Data as of 6/29/2021.
Number of Cases <18 years	1621	Source: Michigan Disease Surveillance System
% cases <18 years	14.5%	

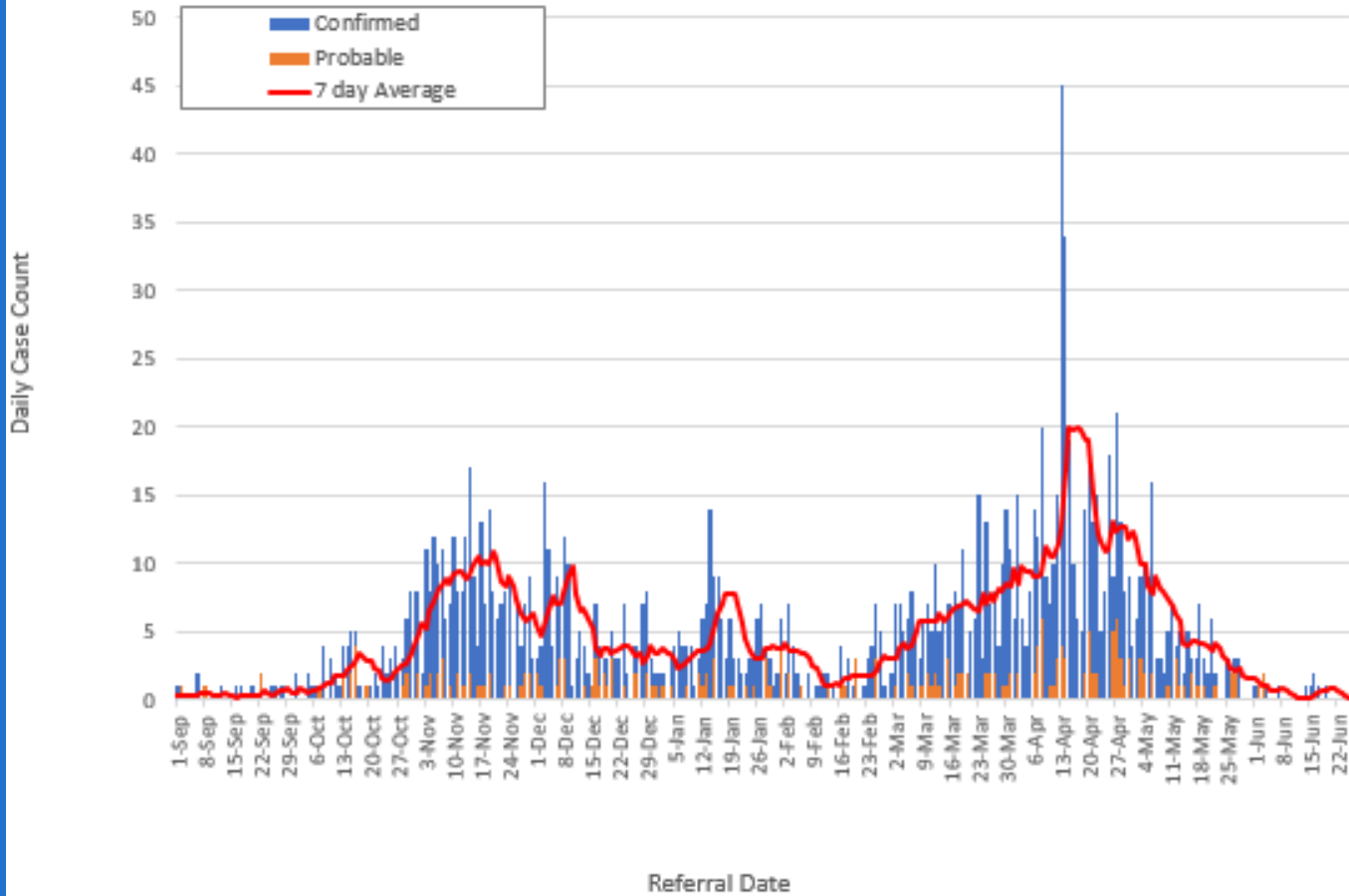
<u>Approximate Grade Level</u>	<u>Age</u>	<u>Case Count*</u>	<u>% total cases</u>	<u>% cases <18 years</u>
	0-2 years	124	1.1%	7.6%
Pre-K age	3-4 years	82	0.7%	5.1%
K-5th grade age	5-10 years	419	3.7%	25.8%
6-8th grade age	11-13 years	307	2.7%	18.9%
9-12th grade age	14-17 years	689	6.2%	42.5%

**Case counts are based on case ages, which have been grouped into approximate grade levels. These counts may not reflect the actual grade level of cases. To prevent double-counting of cases, the age brackets do not overlap.*

Case count by age, data from 6/16/21-6/29/21 (2 weeks)

0-2 years	3-4 years	5-10 years	11-13 years	14-17 years
1	2	2	1	1

Allegan County School Age Cases by Referral Date



Sufficient Health Care Capacity

Statewide Hospital Capacity Report for COVID-19* 06/28/2021**

	All Hospital Beds	Adult Hospital Beds	Hospital Inpatient Beds	Hospital Inpatient Bed Occupancy	Adult Hospital Inpatient Beds	Adult Hospital Inpatient Bed Occupancy	ICU Beds	ICU Bed Occupancy	Adult ICU Beds	Adult ICU Bed Occupancy	Total Ventilators	Mechanical Ventilators in use
Region 5	1684	1667	1430	1092	1390	1073	216	122	168	116	312	48
Region 6	3232	2796	2920	2224	2458	1946	384	272	230	176	578	129

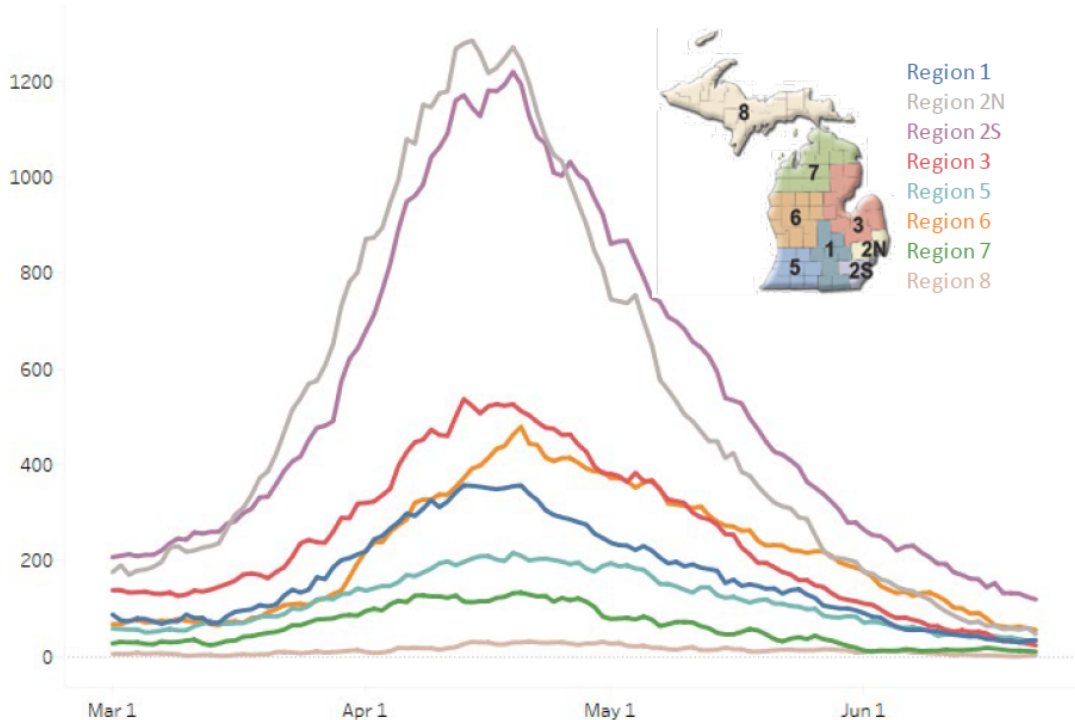
HCC Region	Region 5	Region 6
Total Hospitalized Adult Suspected/Confirmed	30	59
Adult Confirmed-Positive COVID	25	51
Hospitalized Beds Confirmed/Suspected	1	2
Hospitalized Bed Confirmed-Positive	1	1
Hospitalized and Ventilated COVID	0	4
Adult ICU Confirmed/Suspected COVID	8	12
ICU Adult Confirmed-Positive COVID	8	11
Prev Day COVID Related ED Visits	88	29

Region 5	Region 6
↓	↓
↓	↓
↔	↔
↔	↔
↓	↓
↓	↓
↓	↓
↑	↓

COVID-19 Metrics
6/29/21, by HCC Region

Statewide Hospitalization Trends: Regional COVID+ Census

Hospitalization Trends 3/1/2021 – 6/22/2021
Confirmed Positive by Region



All regions show decreasing hospitalization trends this week.

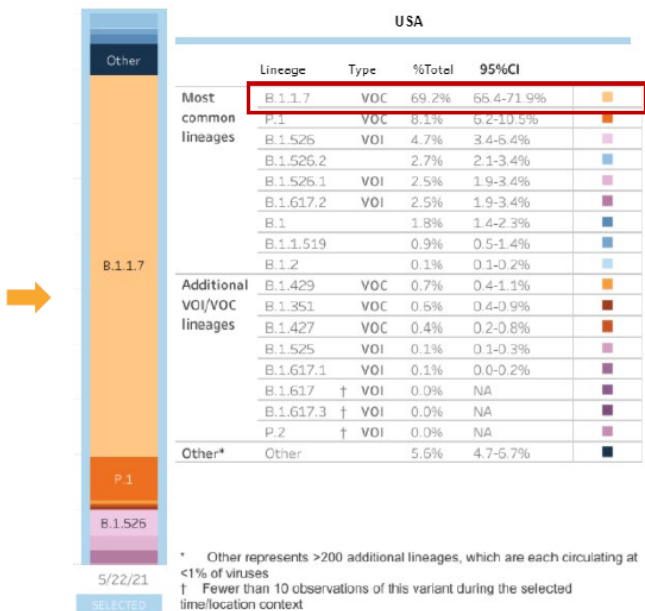
Region	COVID+ Hospitalizations (% Δ from last week)	COVID+ Hospitalizations / MM
Region 1	34 (-21%)	31/M
Region 2N	47 (-33%)	21/M
Region 2S	119 (-27%)	53/M
Region 3	23 (-55%)	20/M
Region 5	32 (-20%)	34/M
Region 6	55 (-38%)	37/M
Region 7	10 (-29%)	20/M
Region 8	2 (-33%)	6/M

Vaccine Works

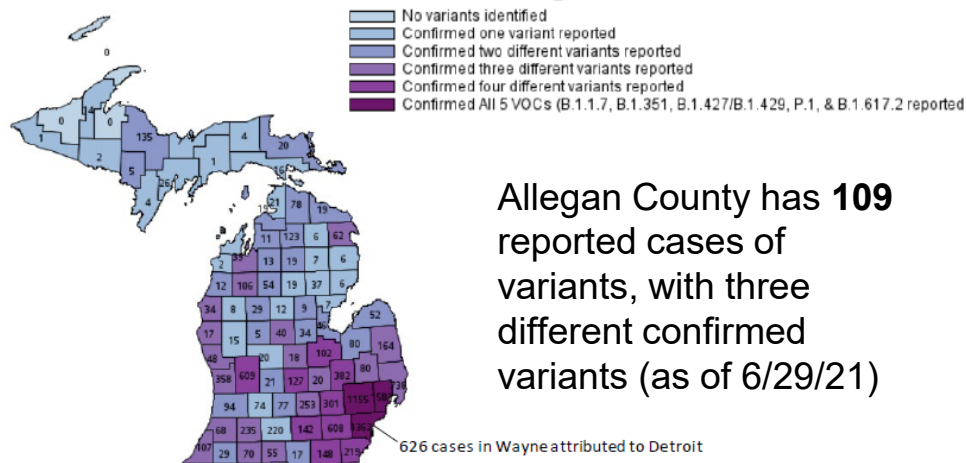
- ▶ Majority of those hospitalized are not vaccinated
- ▶ Since January—
 - ▶ There have been 117 total hospitalizations
 - ▶ Less than 5 fully vaccinated individuals were hospitalized
 - ▶ There's been 1 death in Allegan County from a fully vaccinated individual

Identified COVID-19 Cases Caused by All Variants of Concern (VOC) in US and Michigan

SARS-CoV-2 Variants Circulating in the United States, May 9 – May 22



Variants of Concern in Michigan, Jun 22



Variant	MI Reported Cases [†]	# of Counties	CDC est. prevalence
B.1.1.7 (alpha)	11,783*	80	81.5%
B.1.351 (beta)	72	22	0.5%
B.1.427/B.1.429 (epsilon)	306	43	1.0%
P.1 (gamma)	265	29	3.0%
B.1.617.2 (delta)	32	8	0.2%

* 533 cases within MDOC; [†] 155 cases with county not yet determined

Variants, transmissibility, severity, and vaccine effectiveness

Strain	New WHO nomenclature	Transmissibility	Immune Invasiveness	Increased Severity	Vaccine effective at disease reduction?
Ancestral		-	-	-	✓
B.1.1.7	Alpha	~50% increased transmission	-	Increased hospitalizations and death	✓
B.1.351	Beta	~50% increased transmission	Reduced susceptibility to antibody treatment	-	✓
P.1	Gamma	-	Reduced susceptibility to antibody treatment	-	✓
B.1.427/B.1.429	Epsilon	~20% increased transmissibility	Modest decrease in susceptibility to monoclonal antibody treatment	-	✓
B.1.617.2	Delta	> 50% increased transmission	Reduced susceptibility to antibody treatment	Increased hospitalizations and death	✓

Source: CDC https://www.cdc.gov/coronavirus/2019-ncov/variants/variant-info.html?CDC_AA_refVal=https%3A%2F%2Fwww.cdc.gov%2Fcoronavirus%2F2019-ncov%2Fcases-updates%2Fvariant-surveillance%2Fvariant-info.html World Health Organization, accessed June 8, 2021. <https://www.who.int/en/activities/tracking-SARS-CoV-2-variants/>

Delta Variant (B. 1.617.2)

- ▶ Confirmed cases in West Michigan— no confirmed cases in Allegan County with the Delta Variant currently.
- ▶ With the high rate of transmission, it is important to consider all mitigation strategies.
- ▶ Those that are currently unvaccinated are encouraged to get the COVID-19 vaccine.

COVID-19 Vaccine Updates

5 VACCINE STRATEGIES



Get more people vaccinated

Expand capacity as much as possible, prioritizing those vulnerable to severe disease and exposure and ensuring equity throughout process



Build a robust network of vaccination sites

Ensure all Allegan County community has equitable access to vaccines



Promote efficiency in vaccine delivery and administration

Maximize MDHHS local allocation of vaccine while driving towards eliminating disparities in vaccine administration and maximizing operational efficiency



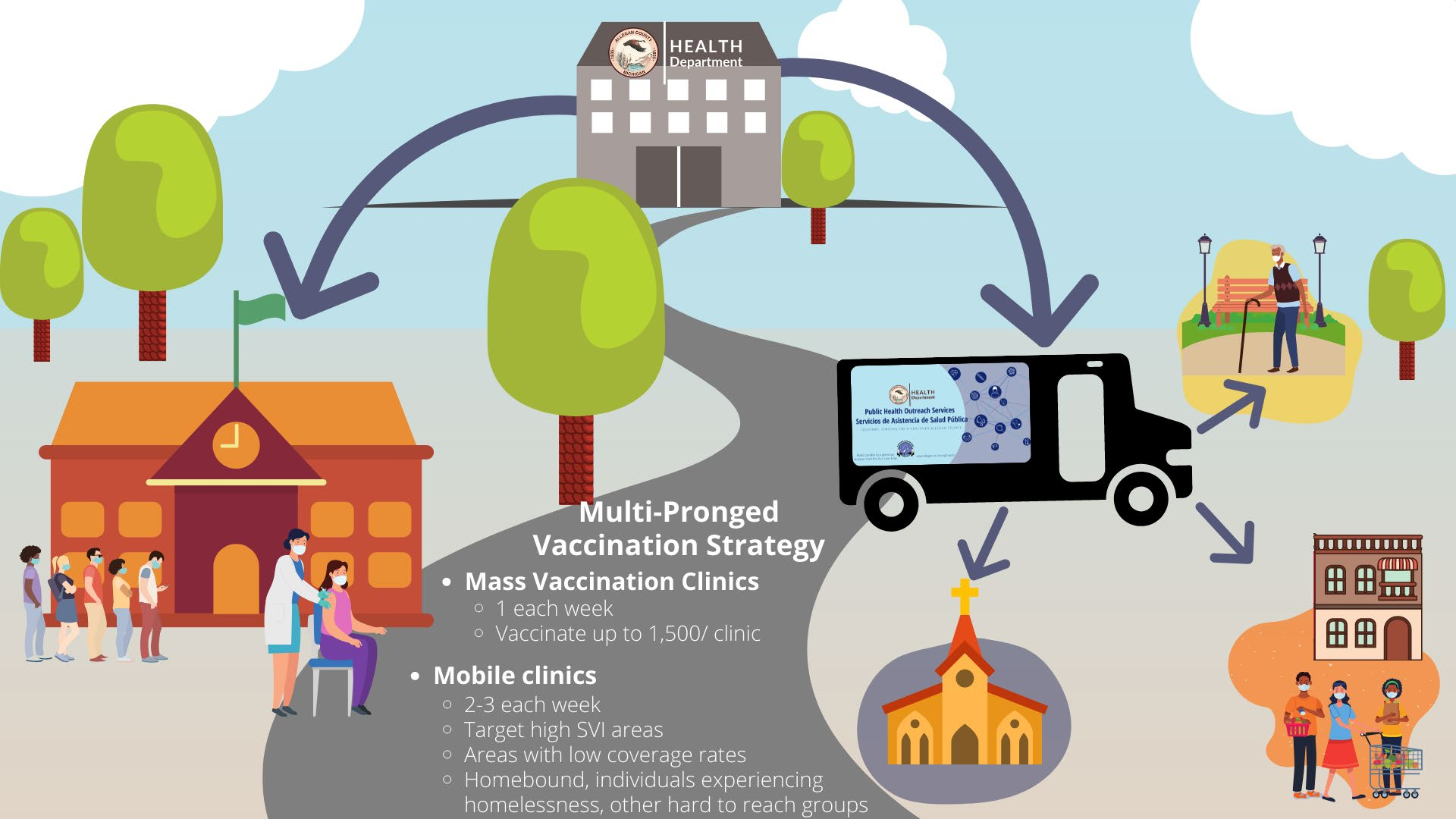
Mobilize personnel to maximize vaccination efforts

Leverage human resource capital and partnerships to support vaccination efforts

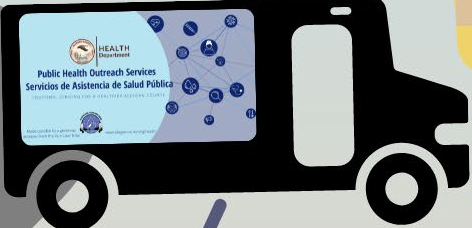


Empower people with information to gain confidence to get vaccinated

Build a targeted communication effort that aligns with MDHHS to assure Allegan County communities have access to timely, accurate, and understandable information on vaccines.



HEALTH Department



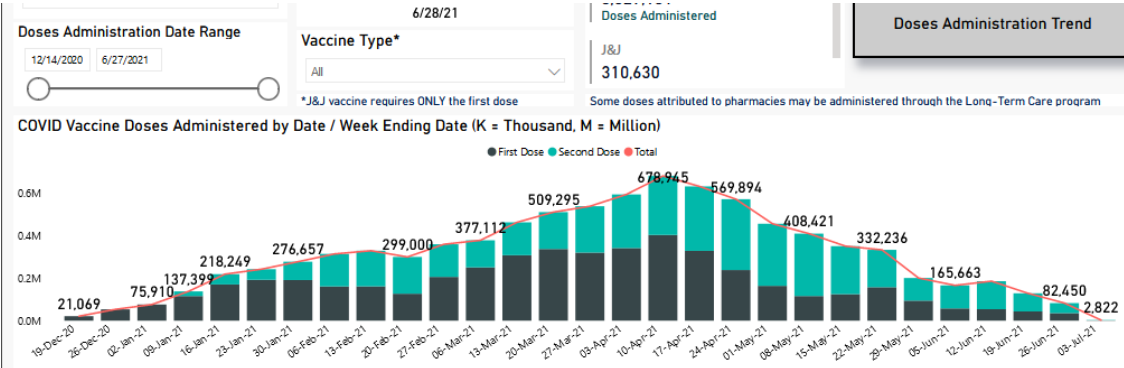
Multi-Pronged Vaccination Strategy

- **Mass Vaccination Clinics**
 - 1 each week
 - Vaccinate up to 1,500/ clinic
- **Mobile clinics**
 - 2-3 each week
 - Target high SVI areas
 - Areas with low coverage rates
 - Homebound, individuals experiencing homelessness, other hard to reach groups



Demand for Vaccine has decreased

- ▶ Allegan County is focusing on **Vaccine Convenient** using Mobile Clinic. For interested organizations, complete this [interest form](#).



Vaccine Breakthrough Cases

- ▶ Vaccine breakthrough cases are expected. COVID-19 vaccines are effective and are a critical tool to bring the pandemic under control. However, no vaccines are 100% effective at preventing illness in vaccinated people.
- ▶ There will be a small percentage of fully vaccinated people who still get sick, are hospitalized, or die from COVID-19.
 - ▶ As of June 22, there are 0.12% (60/51,498) reported vaccine breakthrough cases in Allegan County.
- ▶ There is some evidence that vaccination may make illness less severe for those who are vaccinated and still get sick.
- ▶ To date, no unexpected patterns have been identified in the case demographics or vaccine characteristics among people with reported vaccine breakthrough infections.



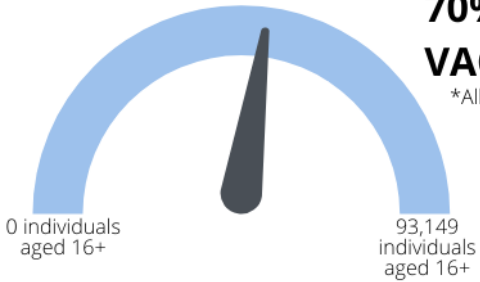
Allegan County VACCINE DATA

Updated 6/29/21
Data as of 6/28/21

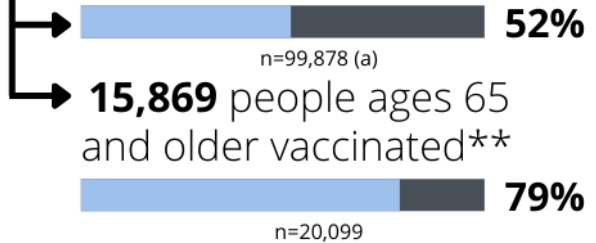
54.2%

70% OF ELIGIBLE INDIVIDUALS* VACCINATED BY END OF 2021

*Allegan County residents age 16+



As of June 28, **51,983** people have been vaccinated**



**Individuals given at least 1 dose of vaccine. On 5/18, we began including the population 12 years and older.
a: 2019 American Community Survey (ACS) population estimates for 12+ in Allegan County



About **1 in 2** Allegan County individuals are fully vaccinated (48.4%).



Over **3 in 4** Allegan County individuals aged 65 and older are fully vaccinated (75.5%).

Fully Vaccinated: Individuals (12 years and older) receiving 2 doses of Pfizer or Moderna or 1 dose of J&J.

Total Doses Distributed*

78,720

*includes 1st and 2nd doses. Based on allocation process established by MDHHS to each county.

Total Doses Administered*

95,858

*includes 1st and 2nd doses and based on person's residence.

PLANNED CLINICS

2 Clinics

June 27, 2021 to July 3, 2021

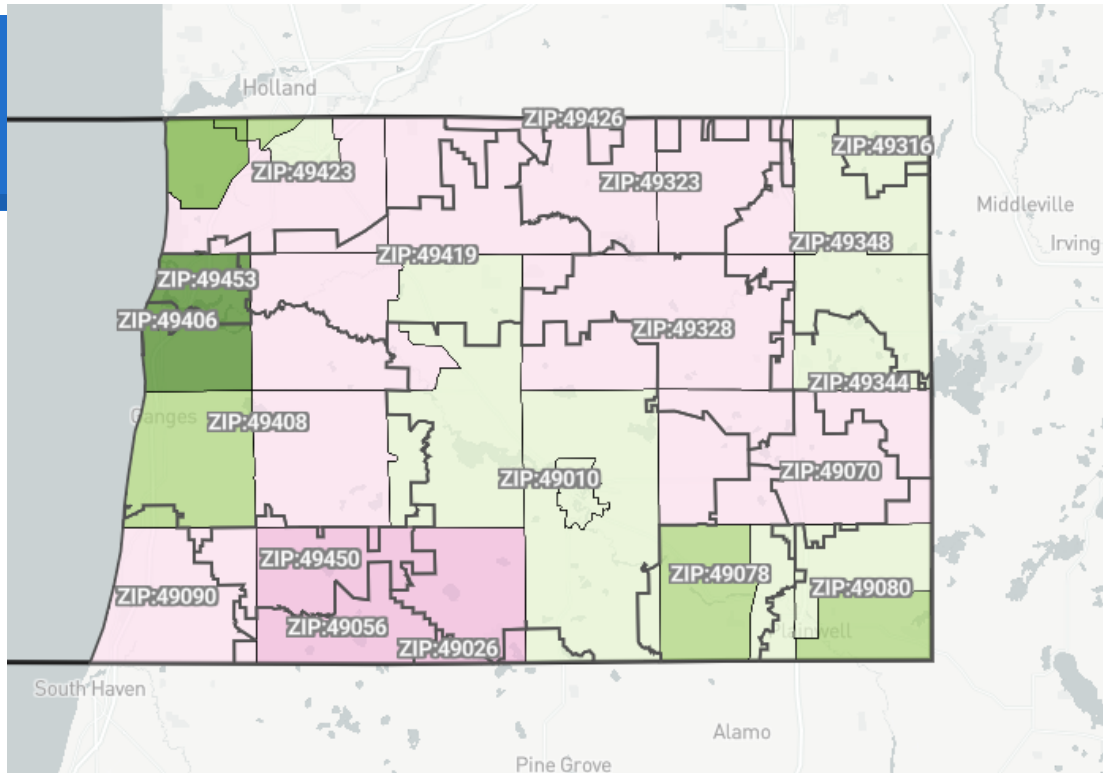
100 First and second doses

Note: Our goal of vaccinating 70% of the population accounted for the 16 and older population. With increasing the eligibility population, our vaccine coverage decreased. We are continuing to strive towards our goal of vaccinating 70% of residents 16 and older, which will reflect on the gauge at the top of this graphic.

6/1/2021 Update: Previous vaccine graphics included 96,451 as the population of Allegan County residents 12 years and older. After further review, 99,878 is a more accurate population estimation.



HEALTH Department



Color coded by: Received 1 or More Dose (% Ages 16+)

0-9% 10-19% 20-29% 30-39% 40-49% 50-59% 60-69% 70-79% 80-89% >90% <150 Population



SHARE: Upcoming COVID-19 Vaccine Clinics * for anyone 12 years and older:

July Mobile Clinics

Thursday, July 1 from 4:00pm-7:00pm | Lincoln Estates, 1139 Lincoln Ave, Holland

Wednesday, July 7 from 1:00pm-4:00pm | Project Hope, 1808 143rd Ave., Dorr

Friday, July 9 from 3:00pm-6:00pm | Ladders of Hope, 717 E. Main St., Fennville

Saturday, July 10 from 9:00am-12:00pm | Allegan High School

Tuesday, July 13 from 3:00pm-6:00pm | Maplewood Church, 133 E. 34th St., Holland

Thursday, July 15 from 2:00pm-5:00pm | The Bridge, 247 N. Main St., Allegan

Saturday, July 17 from 9:00am-12:00pm | Allegan High School

Thursday, July 22 from 2:00pm-5:00pm | Christian Neighbors, 282 12th St., Plainwell

Saturday, July 24 from 9:00am-12:00pm | Allegan High School

Friday, July 30 from 11:00am-3:00pm | Love INC, 943 56th St., Pullman

Saturday, July 31 from 9:00am-12:00pm | Allegan High School

*Minors ages 12-17 will need a parent or legal guardian to accompany them to their appointment or be available by phone in order to provide consent to receive the COVID-19 vaccine. For those 18 and older the vaccine offered depends on supply.

People can make an appointment ahead of time by visiting www.allegancounty.org/covid





Public Health Prevention

4 Summer Tips to Stay Healthy



Fight the Bite

- Use mosquito repellent
- Wear protective clothing
- Install and repair screens
- Keep mosquitos from laying eggs near you



Be Tick Smart

- Look for ticks on your body
- Take a shower after coming indoors
- Put your clothes in the dryer on high heat for 1 hour to kill any remaining ticks.



Wash your hands, and use personal protective equipment as needed

- When cleaning rodent or poultry droppings
- After switching to a new activity
- After eating or drinking
- After water activities



Protect your family & pets from rabies

- Have your dogs and cats vaccinated against rabies
- Stay away from and report strange acting animals
- Report all animal bites
- Seek medical attention if bitten by an animal

**ACHD COVID-19 Updates
will be held on the 4th
Wednesday of every
month.**



Questions?