



HEALTH
Department

COVID-19 Update

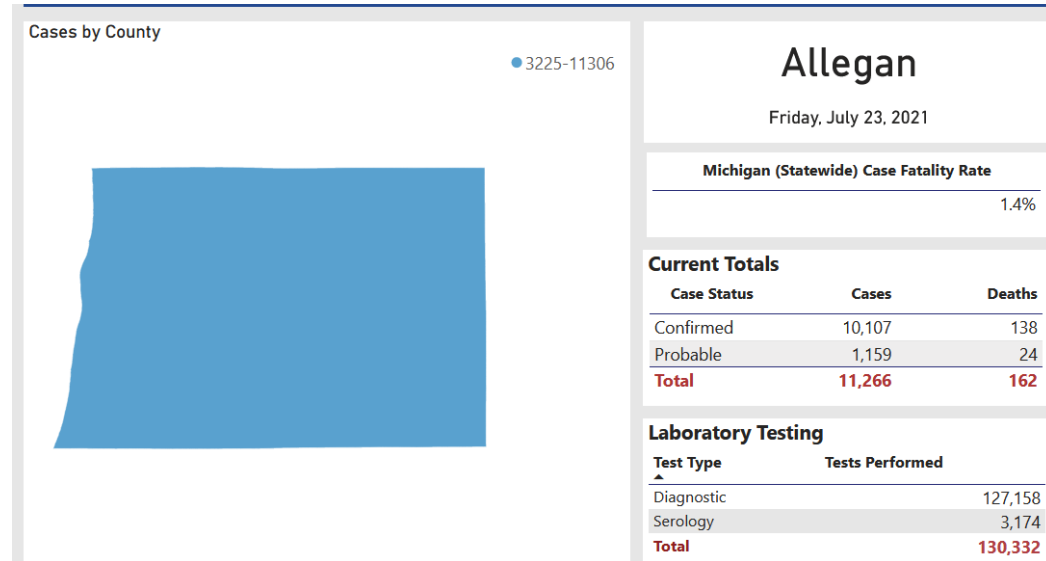
July 28, 2021



Allegan County COVID-19 Dashboard

Moving to updating weekly on Fridays at 3pm.

- ▶ <https://alleganco.maps.arcgis.com/apps/opsdashboard/index.html#/792287b41e3f485c97f968335b45ca6c>
- ▶ Allegan County's COVID-19 data is still updated Tuesdays and Fridays on the MDHHS COVID-19 website. Find the state's dashboard for COVID-19 cases and trends by visiting www.michigan.gov/coronavirus.



Cases

DAILY NEW CASES

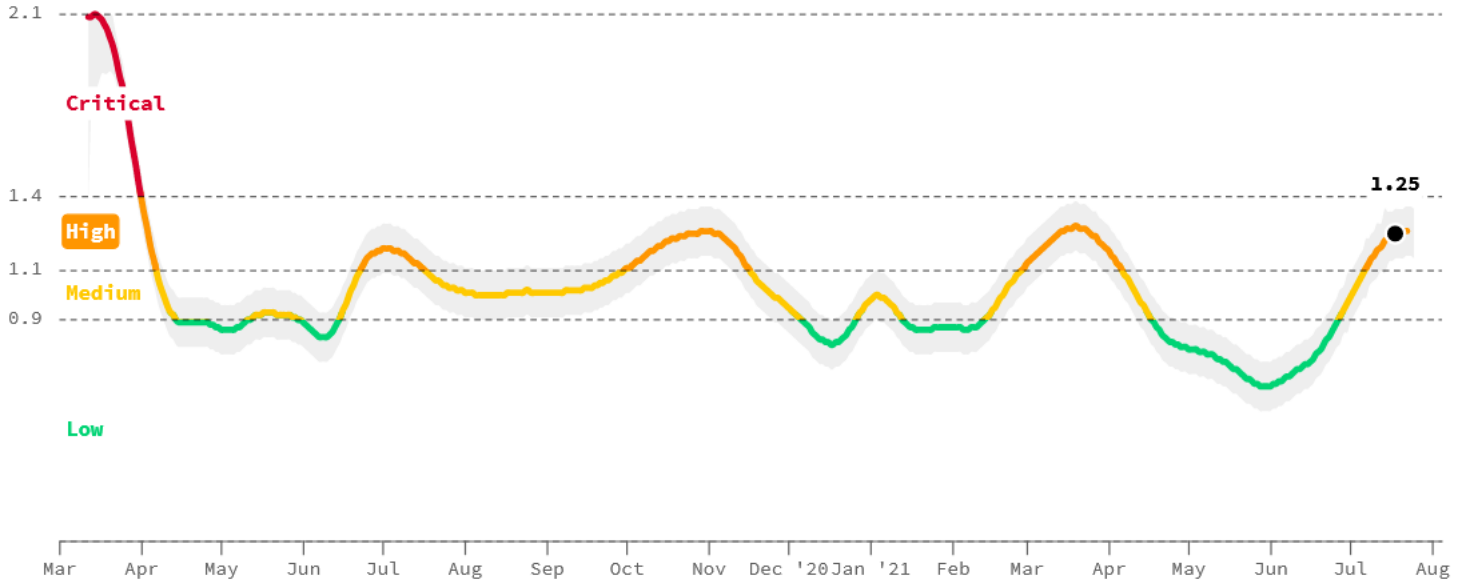
● 4.2 PER 100K

INFECTION RATE

● 1.25

POSITIVE TEST RATE

● 3.5%



On average, each person in Michigan with COVID is infecting 1.25 other people. As such, the total number of active cases in Michigan is growing. [About this data](#)

Share

Updated 7/26/2021

Cases

DAILY NEW CASES

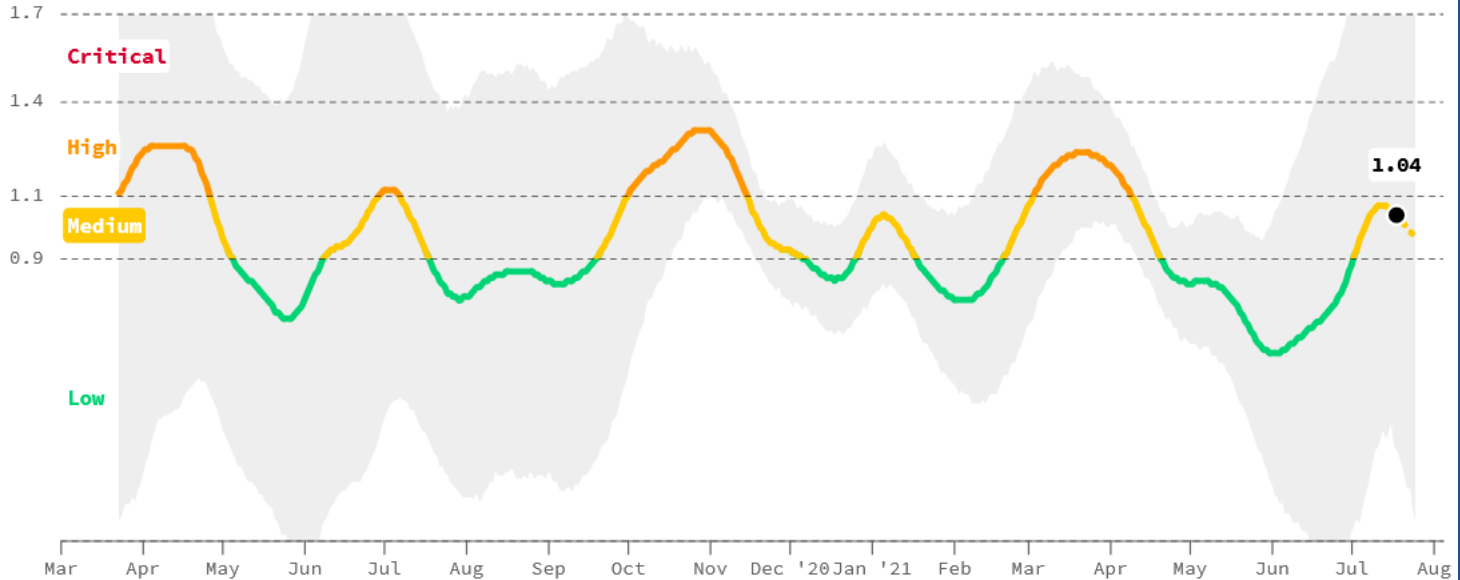
● **3.9** PER 100K

INFECTION RATE

● **1.04**

POSITIVE TEST RATE

● **2.6%**



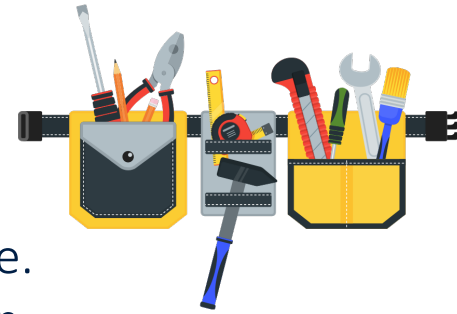
On average, each person in Allegan County, Michigan with COVID is infecting 1.04 other people. Because this number is around 1.0, it means that COVID continues to spread at about a constant rate. [About this data](#)

Share 

Updated 7/26/2021

Keep in mind...

- ▶ All broad public health mandates were lifted 6/22/21. This means there are no requirements in place that any of us have to follow.
- ▶ HOWEVER—COVID-19 did not go away. The responsibility lies on each individual to continue to get the virus transmission level so low that it cannot continue to circulate.
 - ▶ We want to prevent a 3rd surge, so practicing mitigation strategies is important
 - ▶ As more virus transmission in community, there is more chance for variants to develop that have a higher morbidity/mortality rate and/or are vaccine resistant.



TOOLS THAT HELP PREVENT COVID-19 IN SCHOOLS/BUSINESSES



What we are trying to do is to get the virus transmission level so low in the community that it can't continue to spread.

- These tools by themselves are helpful, but when paired together, we can get to our intended outcome (low to no virus transmission) quicker.
 - As community transmission increases, we need more tools to help provide protection
 - As vaccination rate within a community increases, fewer tools need to be practiced since there is a layer of protection

Public Health and ARPA Funding

- ▶ At the [July 8 Board of Commissioners](#) meeting, the Board reviewed projects for the American Rescue Plan Act (ARPA) Funding that the County has received.
- ▶ ARPA provides support to the public health response and lays the foundation for a strong and equitable economic recovery.
- ▶ Allegan County Public Health has estimated \$9 million over the next 3 years for our COVID-19 efforts and response.
- ▶ If we don't receive ARPA funding or an alternative funding source, we may have to pulling back resources to focus on case investigation and contact tracing. We wont be able to provide support like in the past for businesses and schools, and community

Executive Summary

- ▶ Three scenarios (low, moderate and high) have been analyzed to estimate the resources needed to maintain an adequate COVID-19 response.
 - ▶ Based on the knowledge gained throughout the pandemic and the level of uncertainty which still exists, it is understood that resource needs can change quickly. Achieving a high percentage of residents fully vaccinated combined with good mitigation strategies can result in a lower need for resources. Conversely, low percentage of residents vaccinated, the lack of mitigation strategies, or the presence of a variant that is vaccine resistant and has a high mortality/fatality rate can result in a higher need for resources.
- ▶ **Planning for the moderate approach balances demands, while allowing flexibility to increase or decrease resources if/when appropriate.**
- ▶ Funding for the moderate resource level is based on full contracting for additional personnel requests. In the event contracting cannot meet all needs, direct employment may be pursued on a temporary basis. **The proposed staffing level will allow the Health Department to: reallocate internal staff back to core public health needs; decrease/eliminate mandated overtime; and create a specific and separate COVID-19 response team. If a significant increase in COVID-19 cases occurs, resulting in a need for a high resource level, internal staff will likely be reprioritized back to the pandemic response.** In our funding model, we have not included any other funds that may be allocated to the County from the state or any other sources.

Enhanced Ability to Test, <https://mistartmap.info/>

Allegheny County, data as of 7/22/2021

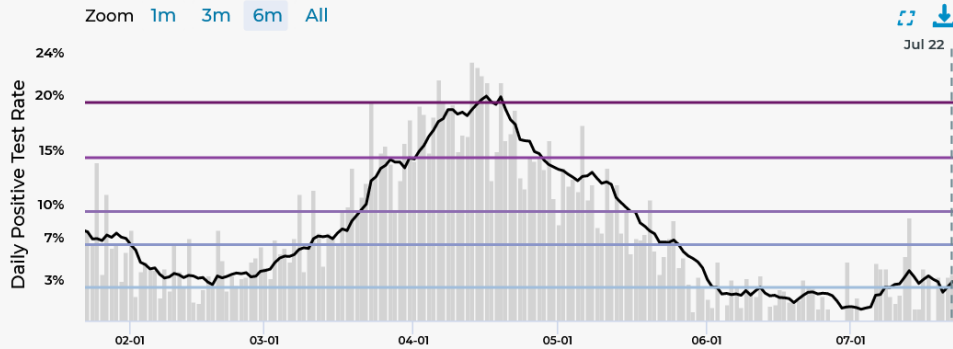
✓ **Test Results**
Jul 10 - Jul 17

3.5%
positive tests *

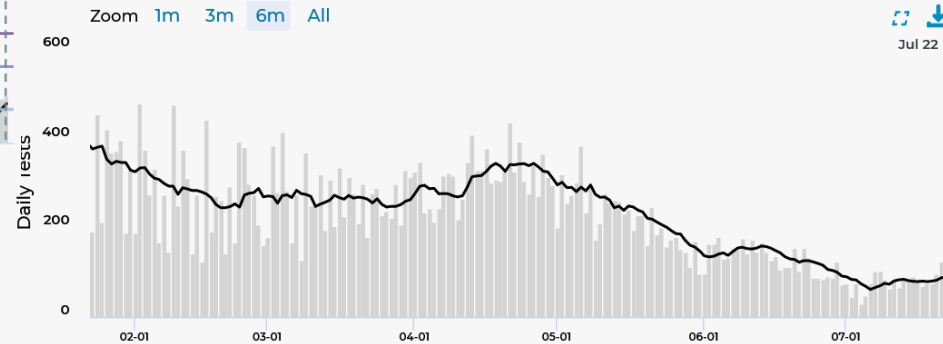
88.2
daily tests
administered *

📉 **1 week** ⓘ
Jul 13 - Jul 20

Daily Positive Test Rate
ALLEGAN COUNTY



Daily Tests
ALLEGAN COUNTY



Test Thresholds
Percent Positive

Low: <3%

A: 3-7%

B: 7-10%

C: 10-15%

D: 15-20%

E: >=20%

✓ **New Cases**
Jul 09 - Jul 16

29.7
daily cases per million

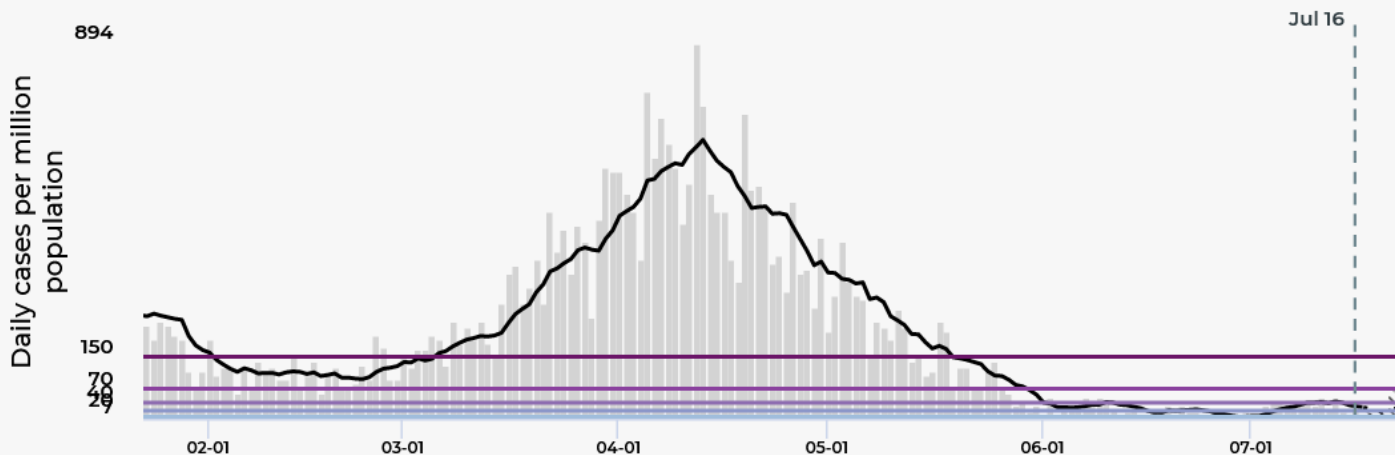
3.4
daily cases



Daily cases per million population

ALLEGAN COUNTY

Zoom 1m 3m 6m All



Risk Thresholds (Cases per Million)



Low: <7



A: 7-20



B: 20-40



C: 40-70



D: 70-150



E: >=150

Comparison with Neighboring Counties, <https://mistartmap.info/>

Allegan County, data as of 7/16/2021

AREA	REGION RISK LEVEL (JUL 13)	COUNTY RISK LEVEL (JUL 16)	DAILY CASES PER MIL.* (JUL 16)	CDC CASE TREND (JUL 16)	% POSITIVE TESTS* (JUL 16)	% POSITIVE WEEKLY TREND (JUL 13)	DAILY TESTS PER MIL.* (JUL 16)
Allegan	A	B	29.7	→	3.7%	2w ↗	687.9
Barry	A	A	21.4	↗	2.4%	2w ↗	677.9
Kalamazoo	A	A	22.3	→	2.6%	2w ↗	976.5
Kent	A	B	25.3	→	2.4%	2w ↗	1,147.7
Ottawa	A	A	16.0	→	2.4%	1w ↘	931.9
Van Buren	A	A	20.8	↗	2.1%	2w ↗	892.0

MI Safe Start Map Results

CDC Indicator Results

Overall Risk Levels:	■ Risk Level B	■ Moderate
Cases Daily Cases per Million Population (7-Day Average) <input type="text" value="29.7"/> Weekly Cases per 100,000 Population <input type="text" value="27"/>	■ Risk Level B 20 - 40 average daily cases per million	■ Moderate 10 - 49 new cases per 100,000 over last 7 days
Test Positivity Percent Positive Tests <input type="text" value="3.5"/> %	■ Risk Level A 3 - 7% positive of last 7 days of tests	■ Low < 5% positive of last 7 days of tests

Epidemiologic Information, Allegan County

Overall	Percent
Healthcare Worker	6.3%
Live or work in high-risk/congregate facility	8.9%
First Responder	0.9%
Other Essential Worker/Critical Infrastructure	15.8%
Healthcare Contact to confirmed care	0.6%
Community Contact to confirmed case	10.1%
Household Contact to confirmed case	17.0%
Total Cases: 11,268	Asymptomatic Cases: 13.1%

Cases Reported in Past two weeks	Percent
In quarantine at time of onset/positive test	16.4%
Associated with known cluster/outbreak	4.9%
Any Contact to confirmed case	32.8%
Healthcare contact to confirmed case	0.0%
Community contact to confirmed case	14.8%
Household contact to confirmed case	21.3%
Attended Community Event/Mass Gathering	6.6%
Any Travel (international, domestic, in state)	18.0%
Source of Infection is unknown	29.5%
Number of cases reported in past 2 weeks: 61	

Breakdown of Cases by School Age Categories

Total Case Count	11268
Number of Cases <18 years	1640
% cases <18 years	14.6%

Data as of 7/23/2021.

Source: Michigan Disease Surveillance System

<u>Approximate Grade Level</u>	<u>Age</u>	<u>Case Count*</u>	<u>% total cases</u>	<u>% cases <18 years</u>
	0-2 years	126	1.1%	7.7%
Pre-K age	3-4 years	82	0.7%	5.0%
K-5th grade age	5-10 years	424	3.8%	25.9%
6-8th grade age	11-13 years	314	2.8%	19.1%
9-12th grade age	14-17 years	694	6.2%	42.3%

**Case counts are based on case ages, which have been grouped into approximate grade levels.*

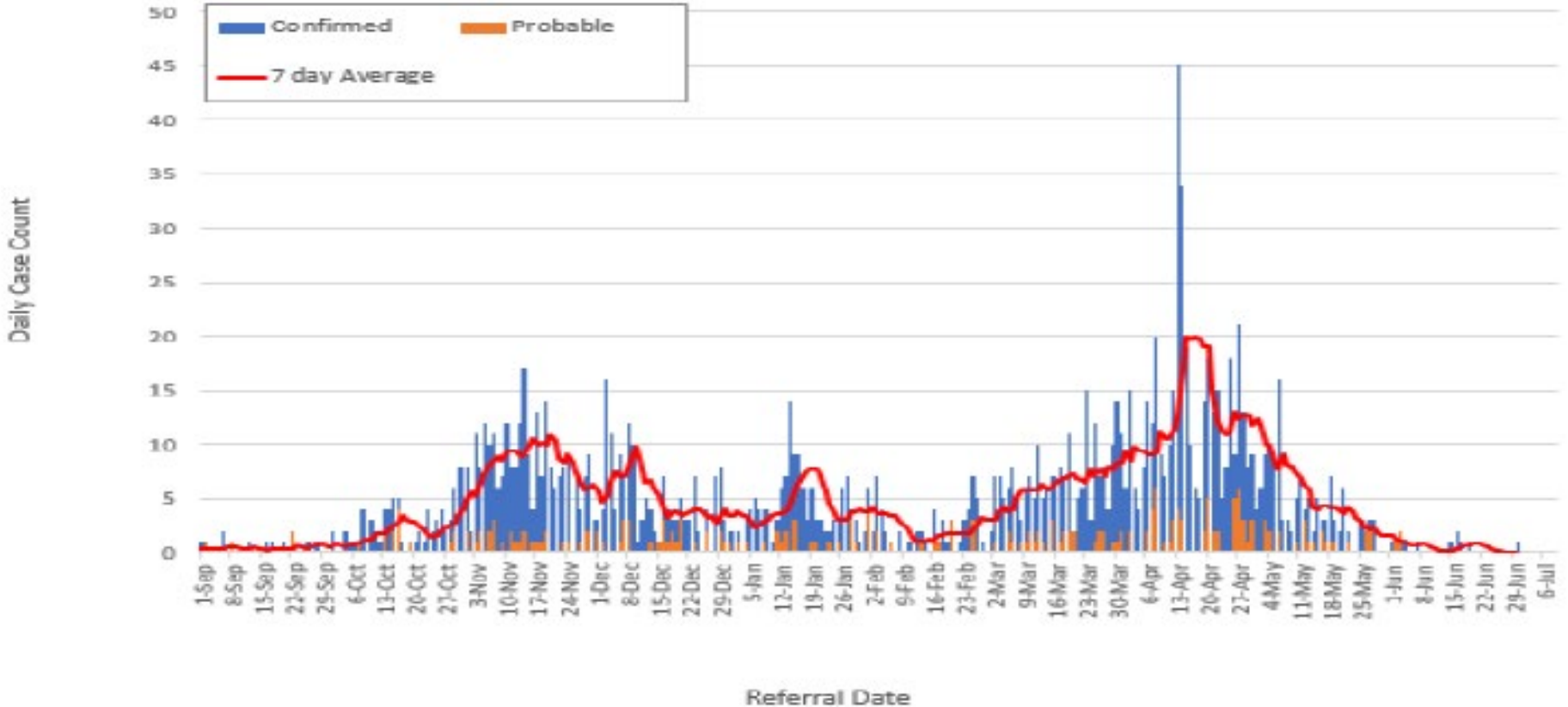
These counts may not reflect the actual grade level of cases.

To prevent double-counting of cases, the age brackets do not overlap.

Case count by age, data from 7/10/21-7/23/21 (2 weeks)

0-2 years	3-4 years	5-10 years	11-13 years	14-17 years
1	0	1	3	5

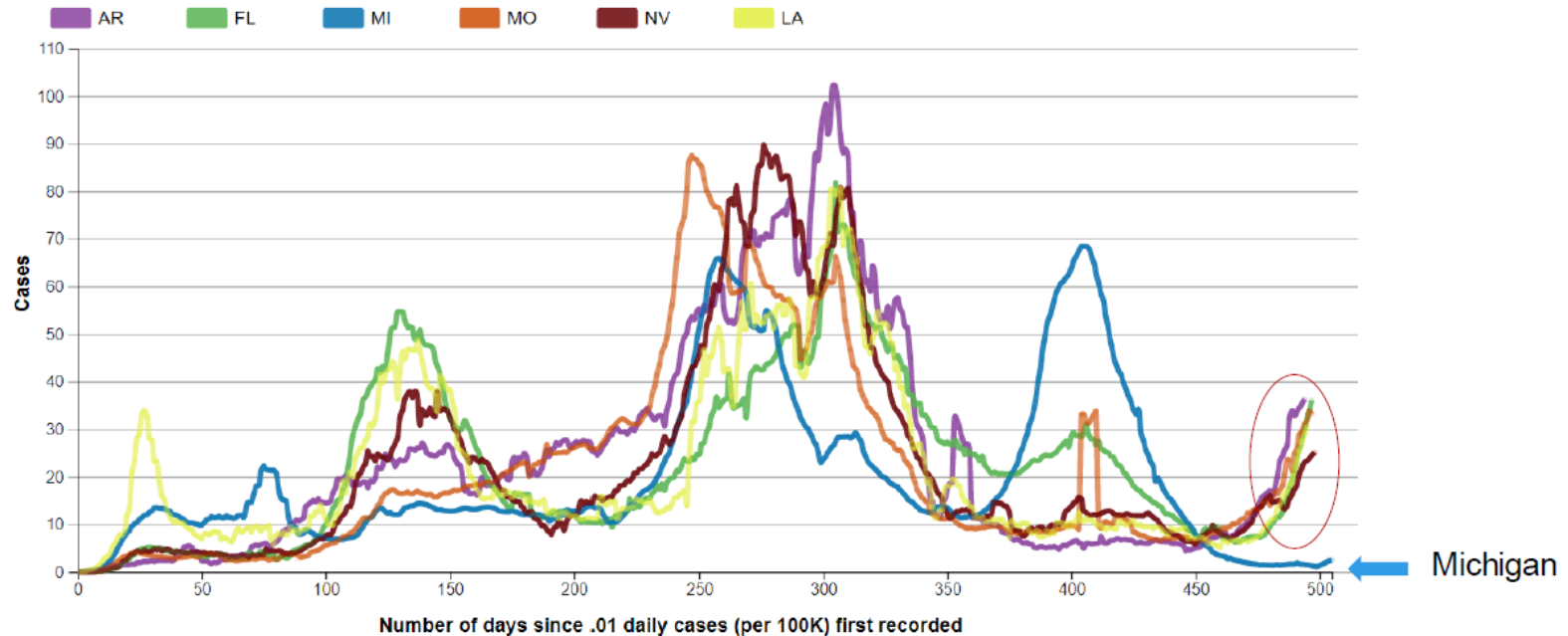
Allegan County School Age COVID-19 Cases by Referral Date



Cumulative COVID-19 Case Rates: States with high Delta Comparison

New cases of Covid-19, reported to CDC, in AR, FL, MI, MO, NV, and LA

Seven-day moving average of new cases (per 100K), by number of days since .01 average daily cases (per 100K) first recorded.



- Average daily incidence per 100,000 cases in Michigan is currently lower than other states experiencing a surge in delta cases

Source: [CDC COVID Data Tracker – State Trend Comparison](#)

Sufficient Health Care Capacity

Statewide Hospital Capacity Report for COVID-19* 07/23/2021**

	All Hospital Beds	Adult Hospital Beds	Hospital Inpatient Beds	Hospital Inpatient Bed Occupancy	Adult Hospital Inpatient Beds	Adult Hospital Inpatient Bed Occupancy	ICU Beds	ICU Bed Occupancy	Adult ICU Beds	Adult ICU Bed Occupancy	Total Ventilators	Mechanical Ventilators in use
Region 5	1,680	1,663	1,426	1,070	1,386	1,037	221	127	186	120	1,680	1,663
Region 6	3,239	2,811	2,927	2,310	2,499	2,010	390	301	237	187	3,239	2,811

HCC Region	Region 5	Region 6
Total Hospitalized Adult Suspected/Confirmed	22	35
Adult Confirmed-Positive COVID	17	30
Hospitalized Beds Confirmed/Suspected	2	1
Hospitalized Bed Confirmed-Positive	1	1
Hospitalized and Ventilated COVID	0	6
Adult ICU Confirmed/Suspected COVID	5	8
ICU Adult Confirmed-Positive COVID	5	7
Prev Day COVID Related ED Visits	76	26

Region 5	Region 6
↓	↓
↓	↓
↑	↓
↔	↔
↔	↑
↓	↓
↓	↓
↓	↓

COVID-19 Metrics
7/23/21, by HCC Region

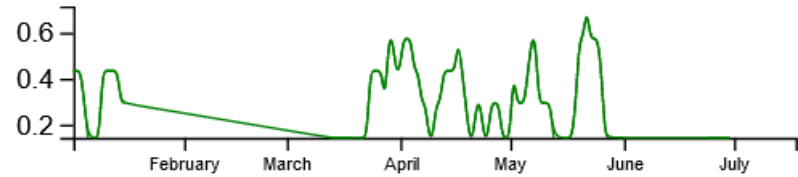
- ▶ <https://covid.cdc.gov/covid-data-tracker/#county-view>

New Hospital Admissions
(COVID)

0

(0 per 100 beds)

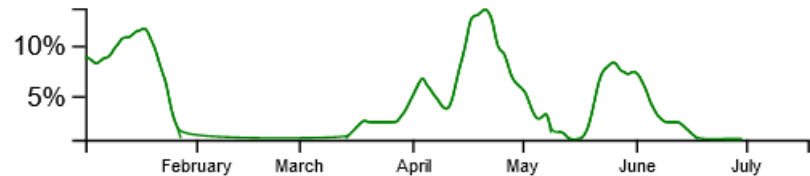
0.00 % change



Percent Beds Used
(COVID)

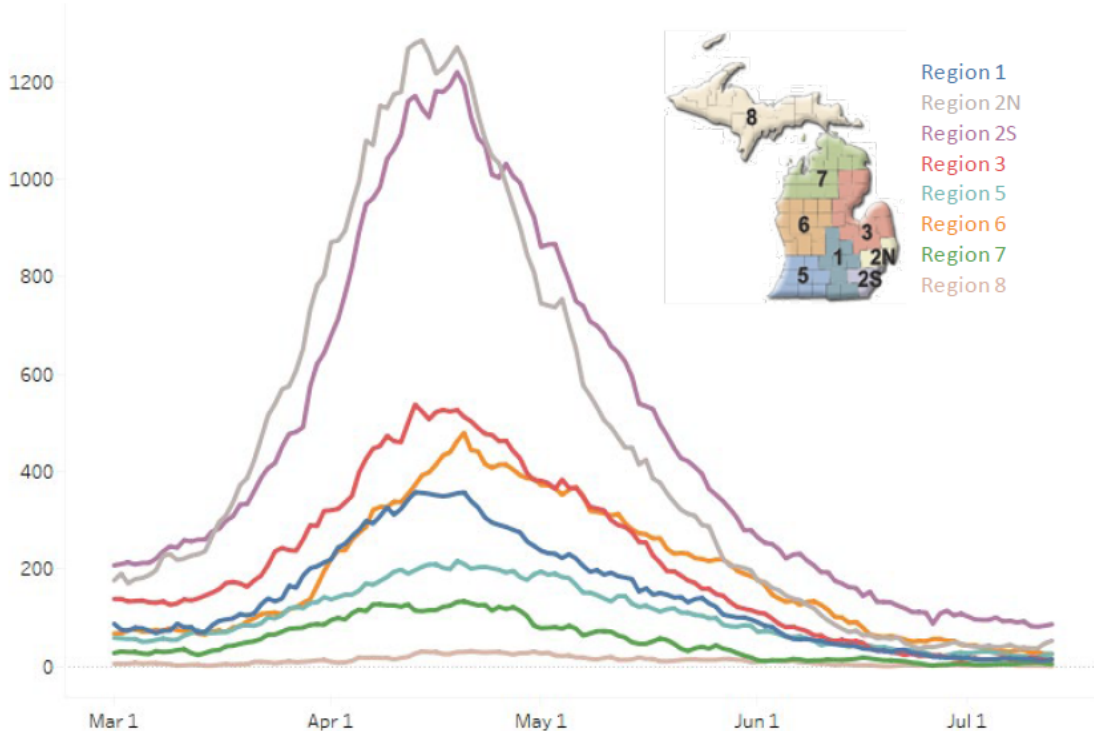
0.00 %

0.00 % change



Statewide Hospitalization Trends: Regional COVID+ Census

Hospitalization Trends 3/1/2021 – 7/20/2021
Confirmed Positive by Region

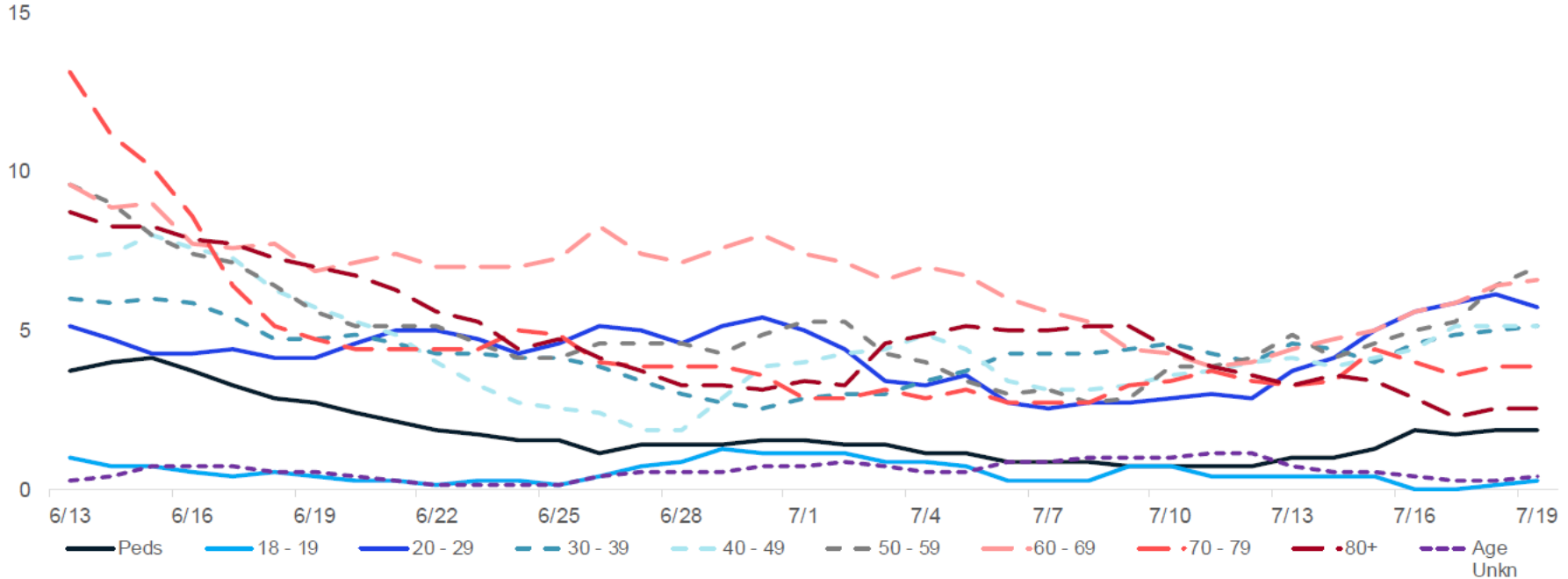


6 of 8 regions show increasing hospitalization trends this week with largest absolute increases in Regions 2N and 6.

All regions remain at or below 40/M hospitalized.

Region	COVID+ Hospitalizations (% Δ from last week)	COVID+ Hospitalizations / MM
Region 1	17 (21%)	16/M
Region 2N	66 (27%)	30/M
Region 2S	89 (3%)	40/M
Region 3	14 (0%)	12/M
Region 5	20 (-20%)	21/M
Region 6	34 (36%)	23/M
Region 7	6 (20%)	12/M
Region 8	4 (400%)	13/M

Average Hospital Admissions by Age



Source: CHECC & EM Resource

- Trends for daily average hospital admissions have increased 36% since last week (vs. 4% increase prior week)
- Trends within all age groups < 80 are plateaued or are increasing
- Over the past week, those 50-59 years have seen the highest number of avg. daily hospital admissions (7 admissions)

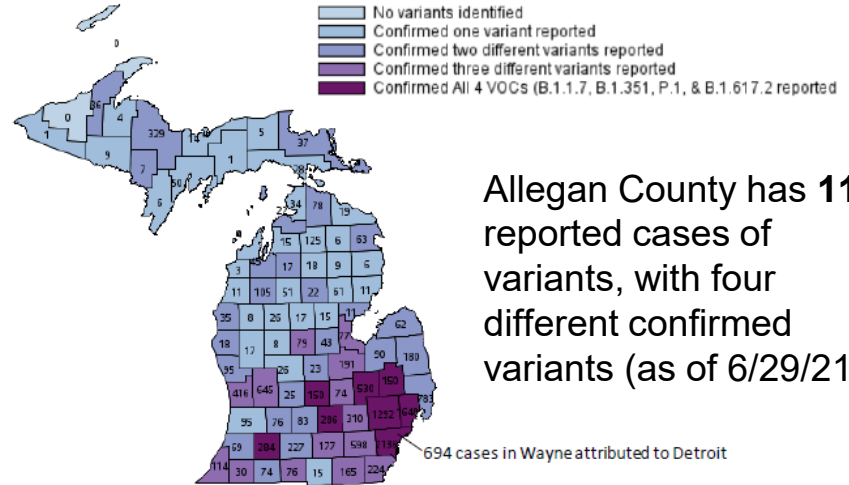
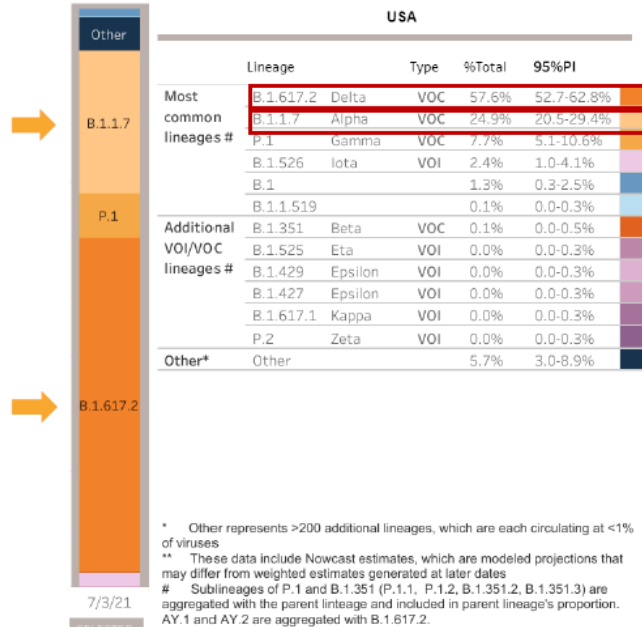
Vaccine Works

- ▶ Majority of those hospitalized are not vaccinated
- ▶ There will be a small percentage of fully vaccinated people who still get sick, are hospitalized, or die from COVID-19.
 - ▶ As of July 20, there are 0.14% (**67/49,005**) reported vaccine breakthrough cases in Allegan County.
- ▶ Since January—
 - ▶ There have been 126 total hospitalizations
 - ▶ 5 fully vaccinated individuals were hospitalized
 - ▶ There's been 1 death in Allegan County from a fully vaccinated individual

Identified COVID-19 Cases Caused by All Variants of Concern (VOC) in US and Michigan

SARS-CoV-2 Variants Circulating in the United States, Jun 20 – Jul 3 (NOWCAST)

Variants of Concern in Michigan, Jul 20



Allegan County has 110 reported cases of variants, with four different confirmed variants (as of 6/29/21)

Variant	MI Reported Cases [†]	# of Counties	CDC est. prevalence for MI
B.1.1.7 (alpha)	13,301*	81	NA
B.1.351 (beta)	82	23	NA
P.1 (gamma)	318	35	NA
B.1.617.2 (delta)	71	21 (↑5)	NA

* 533 cases within MDOC; † 189 cases with county not yet determined

Data last updated July 20, 2021
 Source: <https://covid.cdc.gov/covid-data-tracker/#/variant-proportions> and MDSS

Variants, transmissibility, severity, and vaccine effectiveness

Strain	New WHO nomenclature	Transmissibility	Immune Invasiveness	Increased Severity	Vaccine effective at disease reduction?
Ancestral		-	-	-	✓
B.1.1.7	Alpha	~50% increased transmission	-	Increased hospitalizations and death	✓
B.1.351	Beta	~50% increased transmission	Reduced susceptibility to antibody treatment	-	✓
P.1	Gamma	-	Reduced susceptibility to antibody treatment	-	✓
B.1.427/B.1.429	Epsilon	~20% increased transmissibility	Modest decrease in susceptibility to monoclonal antibody treatment	-	✓
B.1.617.2	Delta	> 50% increased transmission	Reduced susceptibility to antibody treatment	Increased hospitalizations and death	✓

Source: CDC https://www.cdc.gov/coronavirus/2019-ncov/variants/variant-info.html?CDC_AA_refVal=https%3A%2F%2Fwww.cdc.gov%2Fcoronavirus%2F2019-ncov%2Fcases-updates%2Fvariant-surveillance%2Fvariant-info.html World Health Organization, accessed June 8, 2021. <https://www.who.int/en/activities/tracking-SARS-CoV-2-variants/>

Delta Variant (B. 1.617.2) – first identified in India

- ▶ Delta is 200% more transmissible than original strain
- ▶ Delta also has a 1000% higher viral load, so more shedding of virus will happen
- ▶ Confirmed cases in West Michigan– 3 confirmed cases in Allegan County with the Delta Variant.
- ▶ With the high rate of transmission, it is important to consider all mitigation strategies.
- ▶ Those that are currently unvaccinated are encouraged to get the COVID-19 vaccine.

CDC Updated Recommendations for Fully Vaccinated People

- ▶ To maximize protection from the Delta variant and prevent possibly spreading it to others, wear a mask indoors in public if you are in an area of substantial or high transmission.
- ▶ CDC recommends universal indoor masking for all teachers, staff, students, and visitors to schools, regardless of vaccination status.
- ▶ Fully vaccinated people who have a known exposure to someone with suspected or confirmed COVID-19 to be tested 3-5 days after exposure, and to wear a mask in public indoor settings for 14 days or until they receive a negative test result.

COVID-19 Vaccine Updates

5 VACCINE STRATEGIES



Get more people vaccinated

Expand capacity as much as possible, prioritizing those vulnerable to severe disease and exposure and ensuring equity throughout process



Build a robust network of vaccination sites

Ensure all Allegan County community has equitable access to vaccines



Promote efficiency in vaccine delivery and administration

Maximize MDHHS local allocation of vaccine while driving towards eliminating disparities in vaccine administration and maximizing operational efficiency



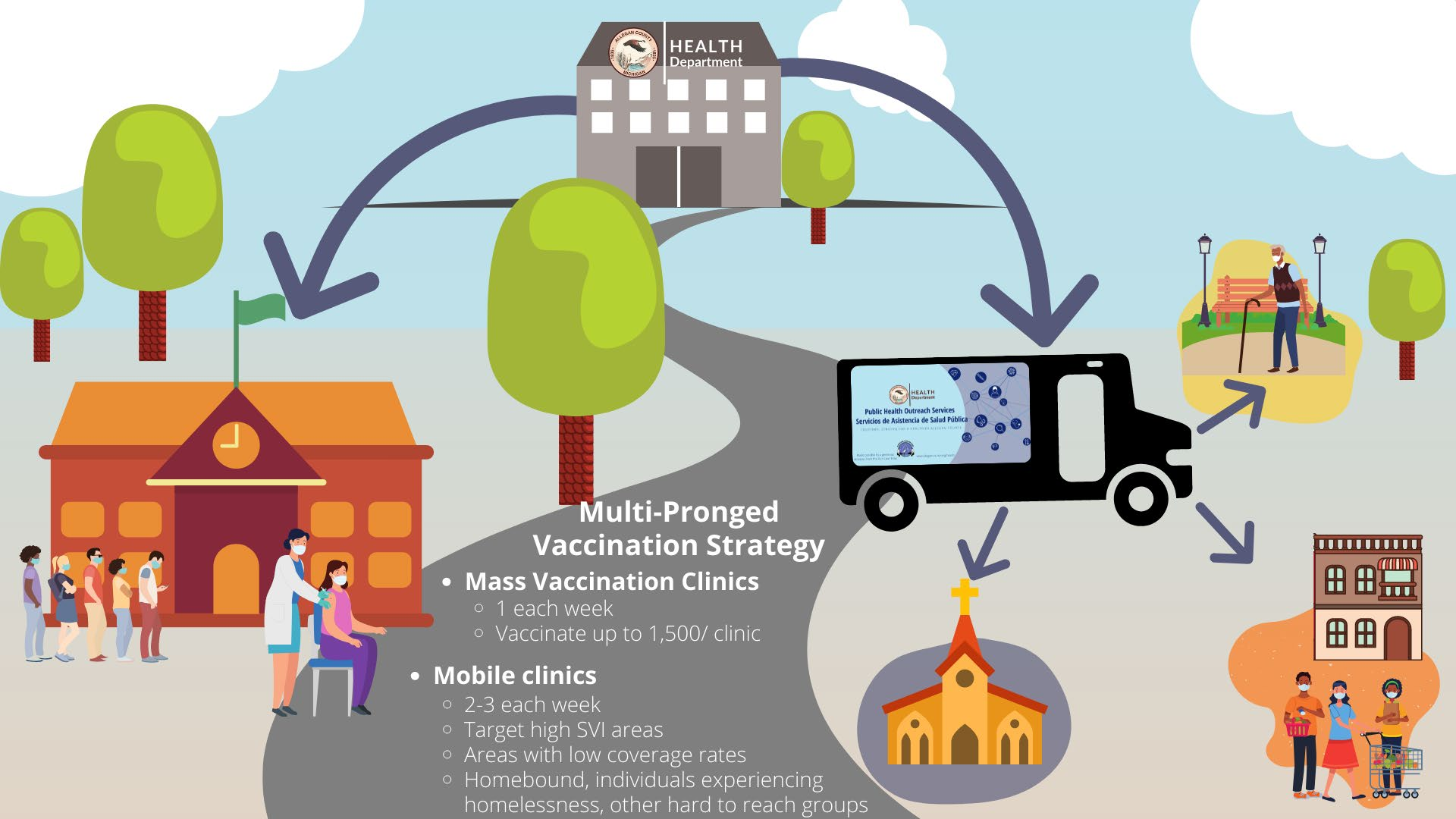
Mobilize personnel to maximize vaccination efforts

Leverage human resource capital and partnerships to support vaccination efforts



Empower people with information to gain confidence to get vaccinated

Build a targeted communication effort that aligns with MDHHS to assure Allegan County communities have access to timely, accurate, and understandable information on vaccines.



Multi-Pronged Vaccination Strategy

- **Mass Vaccination Clinics**
 - 1 each week
 - Vaccinate up to 1,500/ clinic
- **Mobile clinics**
 - 2-3 each week
 - Target high SVI areas
 - Areas with low coverage rates
 - Homebound, individuals experiencing homelessness, other hard to reach groups

Demand for Vaccine has decreased

- ▶ Allegan County is focusing on **Vaccine Convenient** using Mobile Clinic. For interested organizations, complete this [interest form](#).



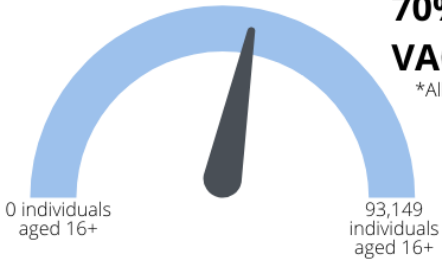
Allegan County VACCINE DATA

Updated 7/26/21
Data as of 7/23/21

55.5%

**70% OF ELIGIBLE INDIVIDUALS*
VACCINATED BY END OF 2021**

*Allegan County residents age 16+



As of July 23, **53,350** people have been vaccinated**



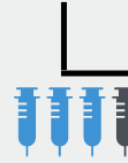
16,045 people ages 65 and older have been vaccinated**



**Individuals given at least 1 dose of vaccine. On 5/18, we began including the population 12 years and older.
a): 2019 American Community Survey (ACS) population estimates for 12+ in Allegan County



1 in 2 individuals are fully vaccinated (50.1%).



Over 3 in 4 individuals aged 65 and older are fully vaccinated (76.6%).

Fully Vaccinated: Individuals (12 years and older) receiving 2 doses of Pfizer or Moderna or 1 dose of J&J.

Total Doses Distributed*

81,100

*includes 1st and 2nd doses. Based on allocation process established by MDHHS to each county.

Total Doses Administered*

98,515

*includes 1st and 2nd doses and based on person's residence.

PLANNED CLINICS

4
Clinics

July 25, 2021 to July 31, 2021

100
First and second doses

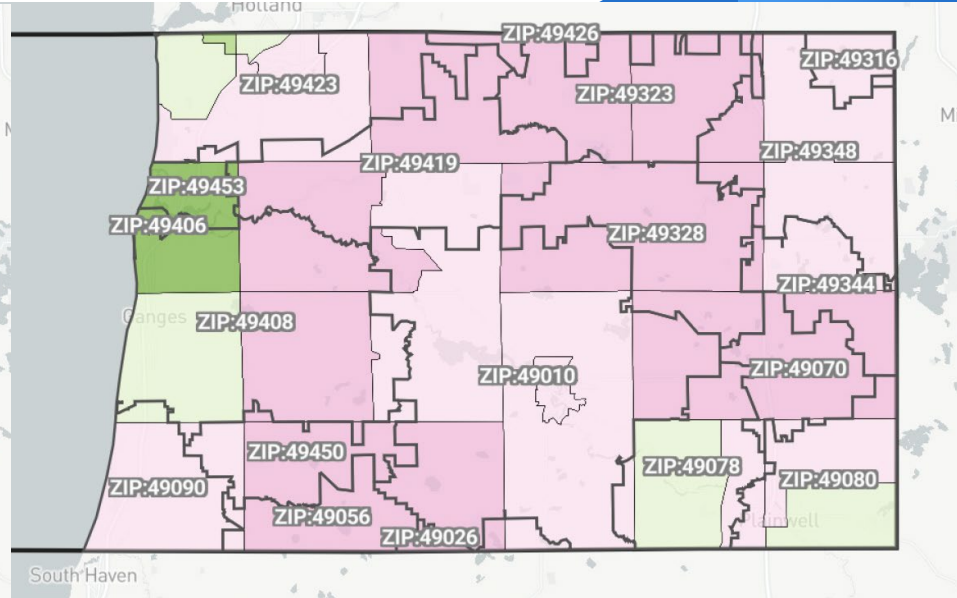
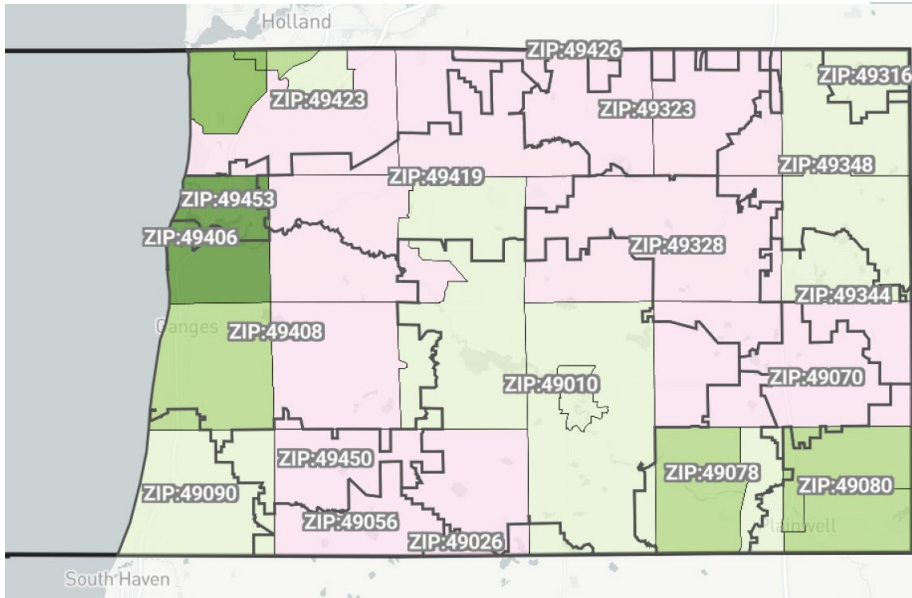
Note: Our goal of vaccinating 70% of the population accounted for the 16 and older population. With increasing the eligibility population, our vaccine coverage decreased. We are continuing to strive towards our goal of vaccinating 70% of residents 16 and older, which will reflect on the gauge at the top of this graphic.

6/1/2021 Update: Previous vaccine graphics included 96,451 as the population of Allegan County residents 12 years and older. After further review, 99,878 is a more accurate population estimation.

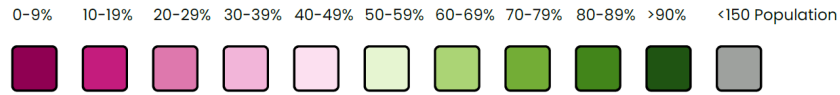


HEALTH Department

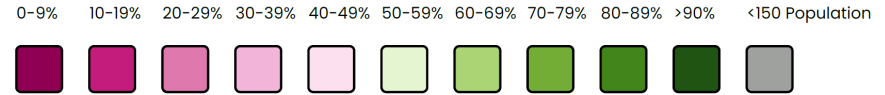
Data as of 7/22/21



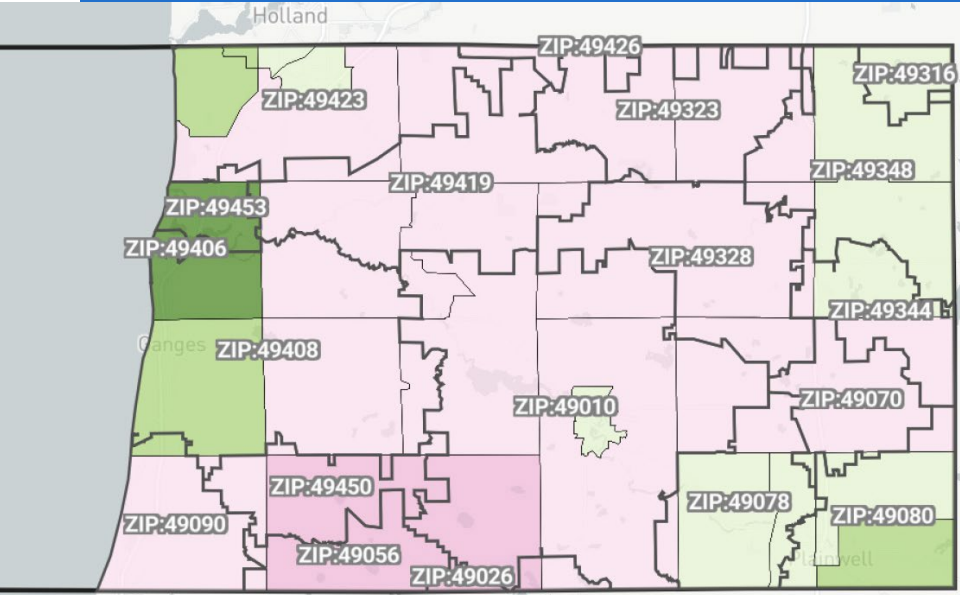
Color coded by: Received 1 or More Dose (% Ages 16+)



Color coded by: Received 1 or More Dose (% Population)

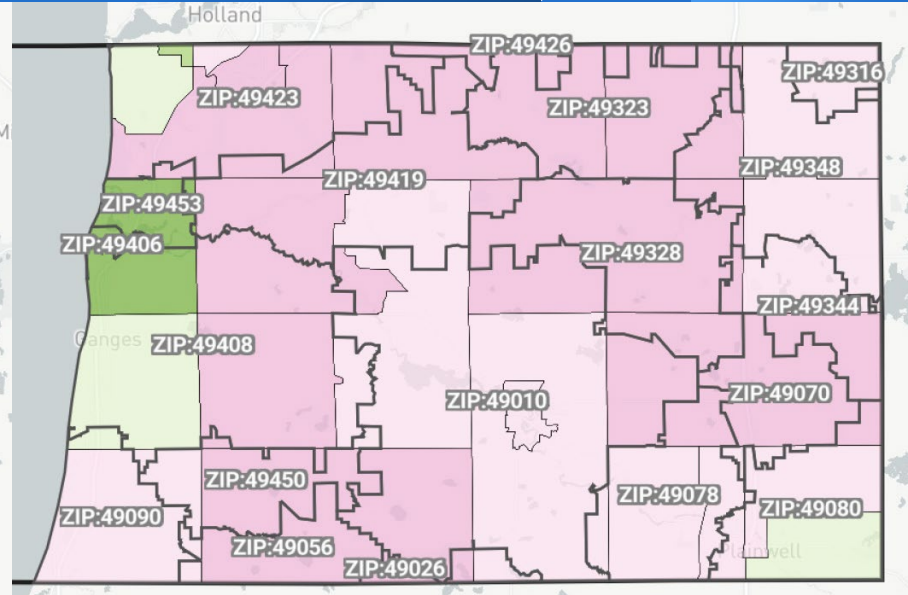


Data as of 7/22/21



Color coded by: Fully Vaccinated (% Ages 16+)

0-9% 10-19% 20-29% 30-39% 40-49% 50-59% 60-69% 70-79% 80-89% >90% <150 Population



Color coded by: Fully Vaccinated (% Population)

0-9% 10-19% 20-29% 30-39% 40-49% 50-59% 60-69% 70-79% 80-89% >90% <150 Population



Upcoming COVID-19 Vaccine Clinics* for anyone 12 years and older



AUGUST VACCINE CLINICS



Make an appointment ahead of time by visiting www.allegancounty.org/covid

Wednesday, August 4 | 12:00pm–4:00pm

Otsego VFW, 124 Farmers St., Otsego (mobile)

Thursday, August 5 | 8:00am–2:00pm

Allegan Farmers Market (mobile)

Friday, August 6 | 12:00pm–3:00pm

Wayland Union Schools (mobile)

Saturday, August 7 | 9:00am–12:00pm

Allegan High School

Friday, August 13 | 3:00pm–6:00pm

Ladders of Hope, 717 E. Main St., Fennville (mobile)

Saturday, August 14 | 9:00am–12:00pm

Allegan High School

Tuesday, August 17 | 10:00am–2:00pm

Saugatuck High School (mobile)

Wednesday, August 18 | 10:00am–1:00pm

Saugatuck Center for the Arts (mobile)

Wednesday, August 18 | 4:30pm–6:30pm

Martin High School (mobile)

Friday, August 20 | 6:00pm–9:00pm

1 Riverfront Plaza Allegan (mobile)

Saturday, August 21 | 9:00am–12:00pm

Allegan High School

Thursday, August 26 | 5:30pm–7:00pm

ACATEC, 2891 116th St., Allegan (mobile)

Friday, August 27 | 11:00am–3:00pm

Love INC Pullman, 943 56th St. (mobile)

Saturday, August 28 | 9:00am–12:00pm

Allegan High School

People can make an appointment ahead of time by visiting www.allegancounty.org/covid



**HEALTH
Department**

*Minors ages 12 to 17 will need a parent or legal guardian to accompany them to their appointment in order to provide consent to receive the COVID-19 vaccine.

Public Health Prevention



HELP KEEP OUR BEACHES SAFE, CLEAN & FUN!


Practice safe swimming & prevent water illnesses

- Do not feed the birds
- Keep pets off the beach
- Use the restroom before swimming
- Do not swallow lake water
- Wash your hands with soap and water before eating
- Do not swim in water that smells foul
- Shower when you return home
- Avoid swimming immediately after heavy rainfall

Be healthy when visiting the
beach and have fun



HEALTH
Department



**ACHD COVID-19 Updates
are held on the 4th
Wednesday of every
month.**



Questions?