



THE NCSTM
The National Community SurveyTM

Allegan County, MI

Technical Appendices

2019



2955 Valmont Road Suite 300
Boulder, Colorado 80301
n-r-c.com • 303-444-7863



Leaders at the Core of Better Communities

777 North Capitol Street NE Suite 500
Washington, DC 20002
icma.org • 800-745-8780

Contents

Appendix A: Complete Survey Responses 1
Appendix B: Benchmark Comparisons 21
Appendix C: Detailed Survey Methods 30
Appendix D: Survey Materials 35



The National Community Survey™
© 2001-2019 National Research Center, Inc.

The NCS™ is presented by NRC in collaboration with ICMA.

NRC is a charter member of the AAPOR Transparency Initiative, providing clear disclosure of our sound and ethical survey research practices.

Appendix A: Complete Survey Responses

Responses excluding “don’t know”

The following pages contain a complete set of responses to each question on the survey, excluding the “don’t know” responses. The percent of respondents giving a particular response is shown followed by the number of respondents (denoted with “N=”).

Table 1: Question 1

Please rate each of the following aspects of quality of life in Allegan County:	Excellent		Good		Fair		Poor		Total	
	%	N	%	N	%	N	%	N	%	N
Allegan County as a place to live	24%	N=69	53%	N=154	20%	N=58	4%	N=11	100%	N=293
Your neighborhood as a place to live	38%	N=112	45%	N=131	12%	N=36	5%	N=14	100%	N=293
Allegan County as a place to raise children	29%	N=77	47%	N=124	20%	N=52	4%	N=11	100%	N=265
Allegan County as a place to work	13%	N=30	38%	N=90	34%	N=81	16%	N=38	100%	N=239
Allegan County as a place to visit	17%	N=47	45%	N=128	28%	N=81	11%	N=30	100%	N=285
Allegan County as a place to retire	22%	N=58	38%	N=101	24%	N=65	17%	N=44	100%	N=269
The overall quality of life in Allegan County	18%	N=54	59%	N=171	19%	N=56	4%	N=11	100%	N=291

Table 2: Question 2

Please rate each of the following characteristics as they relate to Allegan County as a whole:	Excellent		Good		Fair		Poor		Total	
	%	N	%	N	%	N	%	N	%	N
Overall feeling of safety in Allegan County	23%	N=68	55%	N=161	17%	N=50	4%	N=12	100%	N=291
Overall ease of getting to the places you usually have to visit	27%	N=78	52%	N=154	17%	N=50	4%	N=12	100%	N=293
Quality of overall natural environment in Allegan County	29%	N=83	50%	N=141	17%	N=48	4%	N=12	100%	N=284
Overall “built environment” of Allegan County (including overall design, buildings, parks and transportation systems)	10%	N=28	41%	N=113	41%	N=114	8%	N=21	100%	N=277
Health and wellness opportunities in Allegan County	7%	N=19	35%	N=89	41%	N=105	16%	N=42	100%	N=255
Overall opportunities for education and enrichment	8%	N=21	34%	N=85	42%	N=107	15%	N=39	100%	N=252
Overall economic health of Allegan County	9%	N=23	32%	N=84	43%	N=112	16%	N=41	100%	N=260
Sense of community	8%	N=23	51%	N=143	31%	N=87	10%	N=27	100%	N=280
Overall image or reputation of Allegan County	6%	N=17	38%	N=108	38%	N=107	19%	N=54	100%	N=286

Table 3: Question 3

Please indicate how likely or unlikely you are to do each of the following:	Very likely		Somewhat likely		Somewhat unlikely		Very unlikely		Total	
	%	N	%	N	%	N	%	N	%	N
Recommend living in Allegan County to someone who asks	37%	N=106	45%	N=129	8%	N=23	10%	N=29	100%	N=288
Remain in Allegan County for the next five years	66%	N=185	21%	N=60	8%	N=22	5%	N=15	100%	N=281

Table 4: Question 4

Please rate how safe or unsafe you feel:	Very safe		Somewhat safe		Neither safe nor unsafe		Somewhat unsafe		Very unsafe		Total	
	%	N	%	N	%	N	%	N	%	N	%	N
In your neighborhood during the day	73%	N=214	20%	N=60	3%	N=10	2%	N=6	1%	N=3	100%	N=293
In Allegan County's downtown/commercial areas during the day	59%	N=149	33%	N=84	6%	N=16	1%	N=3	0%	N=1	100%	N=253
In your neighborhood at night	47%	N=136	36%	N=102	11%	N=32	3%	N=10	2%	N=7	100%	N=286
In Allegan County's downtown/commercial areas at night	33%	N=77	38%	N=88	21%	N=49	6%	N=14	3%	N=6	100%	N=234

The National Community Survey™

Table 5: Question 5

Please rate each of the following characteristics as they relate to Allegan County as a whole:	Excellent		Good		Fair		Poor		Total	
Traffic flow on major streets	19%	N=56	55%	N=159	18%	N=53	7%	N=20	100%	N=288
Ease of public parking	20%	N=54	50%	N=133	22%	N=60	8%	N=22	100%	N=268
Ease of travel by car in Allegan County	24%	N=71	58%	N=170	16%	N=46	1%	N=3	100%	N=290
Ease of travel by public transportation in Allegan County	9%	N=15	18%	N=31	36%	N=59	37%	N=61	100%	N=166
Ease of travel by bicycle in Allegan County	11%	N=20	35%	N=66	37%	N=68	18%	N=33	100%	N=187
Ease of walking in Allegan County	19%	N=46	37%	N=91	34%	N=85	10%	N=25	100%	N=246
Availability of paths and walking trails	13%	N=29	34%	N=78	36%	N=83	17%	N=38	100%	N=228
Air quality	19%	N=53	58%	N=158	17%	N=46	6%	N=16	100%	N=273
Cleanliness of Allegan County	10%	N=29	55%	N=159	28%	N=81	6%	N=18	100%	N=287
Overall appearance of Allegan County	11%	N=30	54%	N=154	28%	N=82	7%	N=21	100%	N=288
Public places where people want to spend time	9%	N=24	40%	N=109	39%	N=105	12%	N=32	100%	N=269
Variety of housing options	11%	N=26	31%	N=77	37%	N=90	21%	N=51	100%	N=245
Availability of affordable quality housing	6%	N=14	29%	N=70	36%	N=84	29%	N=69	100%	N=236
Fitness opportunities (including exercise classes and paths or trails, etc.)	7%	N=17	24%	N=60	48%	N=118	21%	N=50	100%	N=246
Recreational opportunities	12%	N=32	41%	N=108	35%	N=94	12%	N=31	100%	N=264
Availability of affordable quality food	11%	N=30	45%	N=128	30%	N=85	14%	N=41	100%	N=283
Availability of affordable quality health care	6%	N=16	34%	N=88	39%	N=99	21%	N=53	100%	N=255
Availability of preventive health services	6%	N=14	30%	N=68	43%	N=99	21%	N=47	100%	N=228
Availability of affordable quality mental health care	5%	N=10	23%	N=45	32%	N=63	39%	N=76	100%	N=195

Table 6: Question 6

Please rate each of the following characteristics as they relate to Allegan County as a whole:	Excellent		Good		Fair		Poor		Total	
Availability of affordable quality child care/preschool	6%	N=9	37%	N=51	30%	N=41	27%	N=38	100%	N=140
K-12 education	15%	N=33	49%	N=108	27%	N=60	8%	N=17	100%	N=218
Adult educational opportunities	6%	N=9	35%	N=54	43%	N=67	16%	N=25	100%	N=155
Opportunities to attend cultural/arts/music activities	5%	N=10	32%	N=71	45%	N=99	18%	N=40	100%	N=220
Opportunities to participate in religious or spiritual events and activities	25%	N=56	45%	N=102	27%	N=60	3%	N=6	100%	N=224
Employment opportunities	10%	N=23	25%	N=61	43%	N=104	22%	N=52	100%	N=239
Shopping opportunities	8%	N=22	27%	N=76	42%	N=116	23%	N=65	100%	N=278
Cost of living in Allegan County	12%	N=35	37%	N=102	35%	N=97	16%	N=44	100%	N=277
Overall quality of business and service establishments in Allegan County	7%	N=19	47%	N=128	37%	N=102	9%	N=24	100%	N=273
Vibrant downtown/commercial areas	5%	N=12	33%	N=85	47%	N=120	15%	N=40	100%	N=257
Overall quality of new development in Allegan County	8%	N=18	39%	N=89	42%	N=97	11%	N=26	100%	N=229
Opportunities to participate in social events and activities	6%	N=13	34%	N=79	50%	N=117	10%	N=23	100%	N=232
Opportunities to volunteer	13%	N=27	43%	N=88	36%	N=74	8%	N=16	100%	N=205
Opportunities to participate in community matters	7%	N=14	43%	N=91	38%	N=81	13%	N=28	100%	N=215
Openness and acceptance of the community toward people of diverse backgrounds	10%	N=22	41%	N=94	31%	N=70	18%	N=42	100%	N=229
Neighborliness of residents in Allegan County	13%	N=36	40%	N=107	38%	N=100	9%	N=23	100%	N=267

The National Community Survey™

Table 7: Question 7

Please indicate whether or not you have done each of the following in the last 12 months.	No		Yes		Total	
	%	N	%	N	%	N
Made efforts to conserve water	28%	N=82	72%	N=210	100%	N=293
Made efforts to make your home more energy efficient	16%	N=47	84%	N=244	100%	N=292
Observed a code violation or other hazard in Allegan County (weeds, abandoned buildings, etc.)	64%	N=185	36%	N=104	100%	N=288
Household member was a victim of a crime in Allegan County	87%	N=253	13%	N=37	100%	N=290
Reported a crime to law enforcement in Allegan County	81%	N=235	19%	N=55	100%	N=291
Stocked supplies in preparation for an emergency	67%	N=195	33%	N=96	100%	N=292
Campaigned or advocated for an issue, cause or candidate	85%	N=248	15%	N=44	100%	N=292
Contacted the County of Allegan County (in-person, phone, email or web) for help or information	68%	N=200	32%	N=92	100%	N=293
Contacted Allegan County elected officials (in-person, phone, email or web) to express your opinion	87%	N=253	13%	N=38	100%	N=292

Table 8: Question 8

In the last 12 months, about how many times, if at all, have you or other household members done each of the following in Allegan County?	2 times a week or more		2-4 times a month		Once a month or less		Not at all		Total	
	%	N	%	N	%	N	%	N	%	N
Used Allegan County recreation centers or their services	3%	N=9	6%	N=18	34%	N=98	57%	N=165	100%	N=290
Visited a neighborhood park or County park	5%	N=13	23%	N=66	48%	N=138	25%	N=73	100%	N=290
Used Allegan County public libraries or their services	9%	N=25	16%	N=46	30%	N=89	45%	N=132	100%	N=292
Participated in religious or spiritual activities in Allegan County	11%	N=33	16%	N=47	16%	N=48	56%	N=164	100%	N=292
Attended a County-sponsored event	0%	N=0	2%	N=6	32%	N=93	66%	N=192	100%	N=291
Used bus, rail, subway or other public transportation instead of driving	0%	N=0	1%	N=3	3%	N=9	96%	N=280	100%	N=292
Carpooled with other adults or children instead of driving alone	8%	N=23	10%	N=30	21%	N=62	61%	N=176	100%	N=291
Walked or biked instead of driving	3%	N=10	9%	N=27	21%	N=60	67%	N=192	100%	N=288
Volunteered your time to some group/activity in Allegan County	5%	N=15	7%	N=21	17%	N=50	71%	N=205	100%	N=291
Participated in a club	3%	N=10	12%	N=36	8%	N=23	76%	N=223	100%	N=291
Talked to or visited with your immediate neighbors	24%	N=69	35%	N=104	30%	N=88	11%	N=31	100%	N=292
Done a favor for a neighbor	11%	N=33	32%	N=93	37%	N=109	20%	N=59	100%	N=293

Table 9: Question 9

Thinking about local public meetings (of local elected officials like County Council or County Commissioners, advisory boards, town halls, HOA, neighborhood watch, etc.), in the last 12 months, about how many times, if at all, have you or other household members attended or watched a local public meeting?	2 times a week or more		2-4 times a month		Once a month or less		Not at all		Total	
	%	N	%	N	%	N	%	N	%	N
Attended a local public meeting	0%	N=1	2%	N=5	18%	N=51	80%	N=232	100%	N=290
Watched (online or on television) a local public meeting	0%	N=1	1%	N=2	8%	N=22	91%	N=264	100%	N=288

Table 10: Question 10

Please rate the quality of each of the following services provided in your community, keeping in mind that services may not be provided by Allegan County government:	Excellent		Good		Fair		Poor		Total	
	%	N	%	N	%	N	%	N	%	N
Sheriff services	29%	N=71	48%	N=119	16%	N=39	8%	N=21	100%	N=251
Fire services	41%	N=95	46%	N=106	11%	N=27	2%	N=6	100%	N=233
Ambulance or emergency medical services	36%	N=81	49%	N=112	13%	N=30	2%	N=6	100%	N=229
Crime prevention	20%	N=41	52%	N=105	23%	N=46	5%	N=10	100%	N=202
Fire prevention and fire education	27%	N=52	45%	N=86	26%	N=50	2%	N=3	100%	N=190

The National Community Survey™

Please rate the quality of each of the following services provided in your community, keeping in mind that services may not be provided by Allegan County government:	Excellent		Good		Fair		Poor		Total	
	%	N	%	N	%	N	%	N	%	N
Traffic enforcement	19%	N=47	39%	N=95	33%	N=80	8%	N=21	100%	N=243
Street repair	4%	N=11	24%	N=66	37%	N=100	35%	N=97	100%	N=273
Street lighting	6%	N=14	39%	N=100	39%	N=100	17%	N=45	100%	N=260
Snow removal	14%	N=39	36%	N=99	32%	N=89	17%	N=48	100%	N=275
Traffic signal timing	12%	N=29	48%	N=115	28%	N=68	12%	N=28	100%	N=241
Bus or transit services	13%	N=11	22%	N=20	32%	N=29	33%	N=30	100%	N=90
Garbage collection	28%	N=69	51%	N=126	17%	N=42	5%	N=12	100%	N=249
Recycling	25%	N=58	43%	N=98	16%	N=36	16%	N=37	100%	N=229
Storm drainage	15%	N=31	42%	N=89	27%	N=58	16%	N=35	100%	N=213
Drinking water	21%	N=50	43%	N=100	21%	N=49	15%	N=35	100%	N=234
Sewer services	24%	N=33	46%	N=65	24%	N=34	6%	N=9	100%	N=141
Power (electric and/or gas) utility	21%	N=56	47%	N=127	23%	N=62	9%	N=25	100%	N=270
Utility billing	18%	N=45	50%	N=130	24%	N=62	8%	N=20	100%	N=257
County parks	15%	N=36	59%	N=137	23%	N=53	3%	N=6	100%	N=233
Recreation programs or classes	9%	N=11	45%	N=53	34%	N=41	12%	N=14	100%	N=119
Recreation centers or facilities	7%	N=11	46%	N=70	32%	N=48	15%	N=22	100%	N=150
Land use, planning and zoning	6%	N=10	43%	N=75	34%	N=58	17%	N=30	100%	N=172
Code enforcement (weeds, abandoned buildings, etc.)	5%	N=9	31%	N=59	42%	N=81	22%	N=42	100%	N=192
Animal control	6%	N=11	49%	N=93	35%	N=66	10%	N=19	100%	N=189
Economic development	4%	N=7	34%	N=61	42%	N=75	19%	N=34	100%	N=177
Health services	6%	N=12	39%	N=80	35%	N=71	21%	N=43	100%	N=206
Public library services	33%	N=75	49%	N=111	16%	N=37	2%	N=4	100%	N=226
Public information services	9%	N=16	44%	N=80	36%	N=66	11%	N=19	100%	N=180
Cable television	7%	N=15	31%	N=61	23%	N=45	39%	N=77	100%	N=197
Emergency preparedness (services that prepare the community for natural disasters or other emergency situations)	12%	N=19	30%	N=47	33%	N=51	24%	N=38	100%	N=154
Preservation of natural areas such as open space, farmlands and greenbelts	14%	N=28	44%	N=88	33%	N=67	9%	N=18	100%	N=202
Allegan County open space	20%	N=38	47%	N=92	23%	N=45	11%	N=21	100%	N=196
Overall customer service by Allegan County employees (Sheriff, receptionists, planners, etc.)	20%	N=43	50%	N=107	22%	N=48	8%	N=18	100%	N=215
Internet/broadband services	7%	N=17	22%	N=52	25%	N=59	45%	N=105	100%	N=233
Mental health and addiction services	5%	N=6	25%	N=34	42%	N=57	28%	N=39	100%	N=137
Allegan County Public Health (e.g. well/septic permits, immunizations)	5%	N=8	42%	N=68	39%	N=63	14%	N=23	100%	N=162
Supportive services for seniors	12%	N=15	33%	N=41	38%	N=48	18%	N=23	100%	N=127
Recreational programs for youth (under age 18)	10%	N=11	31%	N=36	39%	N=46	20%	N=23	100%	N=116
Recreational programs for adults (ages 18-59)	6%	N=7	20%	N=23	42%	N=48	32%	N=37	100%	N=115
Recreational programs for older adults (ages 60 and older)	6%	N=6	24%	N=23	36%	N=35	34%	N=33	100%	N=97

The National Community Survey™

Table 11: Question 11

Based on your understanding of the services provided by each of the following entities, how would you rate the quality of the services provided by:	Excellent		Good		Fair		Poor		Total	
	%	N	%	N	%	N	%	N	%	N
Your local government (City or Township)	15%	N=39	48%	N=126	26%	N=70	11%	N=30	100%	N=264
Allegan County	7%	N=19	52%	N=132	31%	N=79	10%	N=24	100%	N=254
The Federal Government	4%	N=10	27%	N=66	40%	N=97	30%	N=73	100%	N=246

Table 12: Question 12

Please rate the following categories of Allegan County government performance:	Excellent		Good		Fair		Poor		Total	
	%	N	%	N	%	N	%	N	%	N
The value of services for the taxes paid to Allegan County	6%	N=17	36%	N=91	45%	N=116	13%	N=32	100%	N=256
The overall direction that Allegan County is taking	6%	N=14	45%	N=103	36%	N=82	13%	N=29	100%	N=227
The job Allegan County government does at welcoming resident involvement	6%	N=11	34%	N=61	38%	N=68	22%	N=40	100%	N=180
Overall confidence in Allegan County government	7%	N=17	39%	N=92	35%	N=82	19%	N=44	100%	N=235
Generally acting in the best interest of the community	10%	N=23	41%	N=95	35%	N=81	15%	N=36	100%	N=235
Being honest	11%	N=24	36%	N=79	37%	N=80	16%	N=34	100%	N=216
Treating all residents fairly	12%	N=26	34%	N=78	39%	N=88	15%	N=35	100%	N=228

Table 13: Question 13

Please rate how important, if at all, you think it is for the Allegan County community to focus on each of the following in the coming two years:	Essential		Very important		Somewhat important		Not at all important		Total	
	%	N	%	N	%	N	%	N	%	N
Overall feeling of safety in Allegan County	43%	N=123	43%	N=125	12%	N=34	2%	N=6	100%	N=288
Overall ease of getting to the places you usually have to visit	20%	N=57	50%	N=143	26%	N=75	4%	N=11	100%	N=286
Quality of overall natural environment in Allegan County	33%	N=93	43%	N=125	23%	N=65	1%	N=4	100%	N=286
Overall "built environment" of Allegan County (including overall design, buildings, parks and transportation systems)	16%	N=45	41%	N=120	37%	N=107	6%	N=17	100%	N=288
Health and wellness opportunities in Allegan County	31%	N=91	40%	N=116	24%	N=70	4%	N=13	100%	N=289
Overall opportunities for education and enrichment	29%	N=84	47%	N=136	19%	N=54	5%	N=13	100%	N=287
Overall economic health of Allegan County	35%	N=101	49%	N=142	15%	N=42	1%	N=3	100%	N=288
Sense of community	23%	N=65	46%	N=133	28%	N=81	3%	N=9	100%	N=288

Table 14: Question 14

In 1965, Allegan County voters established a tax limitation of 5.7 mills for County services. Due to State tax formulas, in 2019 the limitation has been reduced to 4.54 mills. Please indicate whether you would support or oppose restoring the tax limitation to 5.7 mills if the County were to use the additional funds to maintain or expand public services and reduce public debt? (The additional yearly cost to taxpayers would be up to \$57.97 for a home with market value of \$100,000).	Percent	Number
	Strongly support	18%
Somewhat support	42%	N=104
Somewhat oppose	19%	N=48
Strongly oppose	20%	N=50
Total	100%	N=247

The National Community Survey™

Table 15: Question 15

If you support restoring the tax limitation to 5.7 mills, please indicate how you would prioritize the use of the additional funds:	High priority		Medium priority		Low priority		Total	
	%	N	%	N	%	N	%	N
Improve public safety (add Deputies)	45%	N=90	29%	N=58	25%	N=50	100%	N=197
Restore/expand bus transportation	25%	N=45	30%	N=55	46%	N=84	100%	N=184
Maintain service levels at the County medical care facility for older adults (Dumont complex)	32%	N=63	44%	N=85	24%	N=46	100%	N=195
Reduce public employee pension debt	13%	N=23	34%	N=57	53%	N=91	100%	N=171

Table 16: Question 16

How much of a problem, if at all, do you think these issues are in Allegan County?	Major problem		Moderate problem		Minor problem		Not a problem		Total	
	%	N	%	N	%	N	%	N	%	N
Animal problems (animals running at large, barking dogs)	7%	N=20	14%	N=39	32%	N=88	46%	N=126	100%	N=273
Traffic problems (e.g., residential speeding, aggressive drivers)	10%	N=26	27%	N=73	38%	N=103	26%	N=71	100%	N=274
School safety (e.g., bullying, fighting, or weapons)	16%	N=34	36%	N=74	36%	N=75	12%	N=25	100%	N=208
Child abuse and child sexual assault	19%	N=34	39%	N=71	28%	N=50	15%	N=27	100%	N=182
Domestic violence (adult)	18%	N=34	37%	N=69	36%	N=67	10%	N=18	100%	N=189
Sexual assault/rape (adult)	15%	N=24	30%	N=50	37%	N=63	18%	N=31	100%	N=168
Elder abuse and financial crimes against the elderly	14%	N=24	25%	N=44	40%	N=71	21%	N=36	100%	N=175
Driving under the influence (i.e., alcohol or drugs)	25%	N=63	43%	N=107	23%	N=57	10%	N=24	100%	N=251
Underage drinking	25%	N=58	42%	N=96	21%	N=47	12%	N=27	100%	N=229
Drug abuse (e.g., manufacture, sale, or use of illegal/prescription drugs)	42%	N=100	43%	N=102	10%	N=25	6%	N=13	100%	N=240

Table 17: Question 17

Please rate each of the following aspects of child care in Allegan County:	Excellent		Good		Fair		Poor		Total	
	%	N	%	N	%	N	%	N	%	N
High quality, affordable infant care	5%	N=5	18%	N=19	43%	N=43	34%	N=35	100%	N=102
High quality, affordable toddler/preschool care	5%	N=5	25%	N=27	42%	N=46	28%	N=30	100%	N=108
Child care that meets my regular scheduling needs	5%	N=4	27%	N=24	29%	N=25	39%	N=34	100%	N=87
Child care that meets my irregular scheduling needs (e.g., during school breaks or evenings/weekends)	7%	N=6	13%	N=11	28%	N=23	52%	N=43	100%	N=83
Resources to support families with young children (prenatal-5 years old)	5%	N=5	22%	N=20	36%	N=32	37%	N=33	100%	N=90

Table 18: Question 18

Please indicate how much of a source, if at all, you consider each of the following to be for obtaining information about the County government and its activities, events and services:	Major source		Minor source		Not a source		Total	
	%	N	%	N	%	N	%	N
County communications via U.S. mail	48%	N=132	28%	N=78	24%	N=66	100%	N=276
Local newspapers	27%	N=74	37%	N=104	36%	N=101	100%	N=280
County website (allegancounty.org)	33%	N=90	38%	N=104	29%	N=81	100%	N=276
County email notifications	26%	N=71	32%	N=89	42%	N=116	100%	N=276
Social media (e.g., Facebook, Twitter)	29%	N=79	31%	N=85	40%	N=112	100%	N=276
Talking with County officials or County staff, or attending public meetings	14%	N=37	45%	N=125	41%	N=113	100%	N=275
Word of mouth	32%	N=90	44%	N=122	24%	N=67	100%	N=279

The National Community Survey™

Table 19: Question D1

How often, if at all, do you do each of the following, considering all of the times you could?	Never		Rarely		Sometimes		Usually		Always		Total	
Recycle at home	12%	N=35	8%	N=24	21%	N=61	13%	N=38	46%	N=134	100%	N=291
Purchase goods or services from a business located in Allegan County	1%	N=4	6%	N=16	32%	N=93	46%	N=134	15%	N=43	100%	N=290
Eat at least 5 portions of fruits and vegetables a day	3%	N=8	23%	N=68	37%	N=108	26%	N=74	11%	N=32	100%	N=289
Participate in moderate or vigorous physical activity	5%	N=15	19%	N=56	34%	N=98	28%	N=81	14%	N=40	100%	N=290
Read or watch local news (via television, paper, computer, etc.)	7%	N=19	14%	N=41	19%	N=53	30%	N=86	31%	N=89	100%	N=288
Vote in local elections	8%	N=24	3%	N=10	12%	N=36	24%	N=69	52%	N=153	100%	N=291

Table 20: Question D2

Would you say that in general your health is:	Percent	Number
Excellent	17%	N=50
Very good	37%	N=109
Good	35%	N=101
Fair	8%	N=23
Poor	3%	N=8
Total	100%	N=290

Table 21: Question D3

What impact, if any, do you think the economy will have on your family income in the next 6 months? Do you think the impact will be:	Percent	Number
Very positive	14%	N=40
Somewhat positive	17%	N=50
Neutral	52%	N=152
Somewhat negative	12%	N=36
Very negative	4%	N=11
Total	100%	N=289

Table 22: Question D4

What is your employment status?	Percent	Number
Working full time for pay	55%	N=160
Working part time for pay	10%	N=28
Unemployed, looking for paid work	2%	N=6
Unemployed, not looking for paid work	6%	N=17
Fully retired	27%	N=77
Total	100%	N=288

Table 23: Question D5

Do you work inside the boundaries of Allegan County?	Percent	Number
Yes, outside the home	33%	N=93
Yes, from home	10%	N=27
No	57%	N=158
Total	100%	N=278

The National Community Survey™

Table 24: Question D6

How many years have you lived in Allegan County?	Percent	Number
Less than 2 years	7%	N=19
2 to 5 years	14%	N=40
6 to 10 years	12%	N=36
11 to 20 years	14%	N=41
More than 20 years	53%	N=153
Total	100%	N=290

Table 25: Question D7

Which best describes the building you live in?	Percent	Number
One family house detached from any other houses	83%	N=240
Building with two or more homes (duplex, townhome, apartment or condominium)	11%	N=32
Mobile home	5%	N=15
Other	1%	N=3
Total	100%	N=290

Table 26: Question D8

Is this house, apartment or mobile home...	Percent	Number
Rented	16%	N=46
Owned	84%	N=243
Total	100%	N=289

Table 27: Question D9

About how much is your monthly housing cost for the place you live (including rent, mortgage payment, property tax, property insurance and homeowners' association (HOA) fees)?	Percent	Number
Less than \$300 per month	7%	N=19
\$300 to \$599 per month	19%	N=53
\$600 to \$999 per month	29%	N=78
\$1,000 to \$1,499 per month	25%	N=69
\$1,500 to \$2,499 per month	16%	N=43
\$2,500 or more per month	4%	N=11
Total	100%	N=274

The National Community Survey™

Table 28: Question D10

Please indicate how many people in each age range live in your household Average number of each per household	Mean	Count
Number of children age 0-5	.25	N=293
Number of children age 6-17	.56	N=293
Number of adults age 18 or older	1.91	N=293
Total persons in household	2.72	N=293

Table 29: Question D11

Are you or any other members of your household aged 65 or older?	Percent	Number
No	69%	N=199
Yes	31%	N=90
Total	100%	N=289

Table 30: Question D12

How much do you anticipate your household's total income before taxes will be for the current year? (Please include in your total income money from all sources for all persons living in your household.)	Percent	Number
Less than \$25,000	13%	N=34
\$25,000 to \$37,499	13%	N=34
\$37,500 to \$49,999	9%	N=23
\$50,000 to \$61,999	16%	N=42
\$62,000 to \$99,999	25%	N=66
\$100,000 to \$149,999	16%	N=43
\$150,000 or more	8%	N=22
Total	100%	N=263

Table 31: Question D13

Are you Spanish, Hispanic or Latino?	Percent	Number
No, not Spanish, Hispanic or Latino	98%	N=282
Yes, I consider myself to be Spanish, Hispanic or Latino	2%	N=6
Total	100%	N=287

Table 32: Question D14

What is your race? (Mark one or more races to indicate what race(s) you consider yourself to be.)	Percent	Number
American Indian or Alaskan Native	2%	N=6
Asian, Asian Indian or Pacific Islander	0%	N=0
Black or African American	0%	N=0
White	95%	N=270
Other	5%	N=14

Total may exceed 100% as respondents could select more than one option.

The National Community Survey™

Table 33: Question D15

In which category is your age?	Percent	Number
18-24 years	5%	N=14
25-34 years	17%	N=50
35-44 years	14%	N=41
45-54 years	21%	N=61
55-59 years	7%	N=21
60-64 years	12%	N=34
65-74 years	14%	N=41
75 years or older	9%	N=27
Total	100%	N=288

Table 34: Question D16

What is your sex?	Percent	Number
Female	49%	N=140
Male	51%	N=144
Total	100%	N=284

Table 35: Question D17

Do you consider a cell phone or landline your primary telephone number?	Percent	Number
Cell	74%	N=213
Land line	16%	N=47
Both	10%	N=30
Total	100%	N=289

Table 36: Question D18

What is the highest grade of school or year of college that you have completed?	Percent	Number
Grade school	1%	N=4
High school degree or GED	31%	N=89
Some college/Associate's degree	40%	N=115
Bachelor's degree	18%	N=52
Post-bachelor's degree/Graduate degree	10%	N=29
Total	100%	N=288

The National Community Survey™

Responses including “don’t know”

The following pages contain a complete set of responses to each question on the survey, including the “don’t know” responses. The percent of respondents giving a particular response is shown followed by the number of respondents (denoted with “N=”).

Table 37: Question 1

Please rate each of the following aspects of quality of life in Allegan County:	Excellent		Good		Fair		Poor		Don't know		Total	
	%	N	%	N	%	N	%	N	%	N	%	N
Allegan County as a place to live	24%	N=69	52%	N=154	20%	N=58	4%	N=11	0%	N=0	100%	N=293
Your neighborhood as a place to live	38%	N=112	45%	N=131	12%	N=36	5%	N=14	0%	N=0	100%	N=293
Allegan County as a place to raise children	27%	N=77	43%	N=124	18%	N=52	4%	N=11	9%	N=26	100%	N=291
Allegan County as a place to work	10%	N=30	31%	N=90	28%	N=81	13%	N=38	18%	N=52	100%	N=291
Allegan County as a place to visit	16%	N=47	44%	N=128	28%	N=81	10%	N=30	2%	N=7	100%	N=293
Allegan County as a place to retire	20%	N=58	35%	N=101	22%	N=65	15%	N=44	8%	N=23	100%	N=291
The overall quality of life in Allegan County	18%	N=54	58%	N=171	19%	N=56	4%	N=11	1%	N=2	100%	N=293

Table 38: Question 2

Please rate each of the following characteristics as they relate to Allegan County as a whole:	Excellent		Good		Fair		Poor		Don't know		Total	
	%	N	%	N	%	N	%	N	%	N	%	N
Overall feeling of safety in Allegan County	23%	N=68	55%	N=161	17%	N=50	4%	N=12	1%	N=2	100%	N=293
Overall ease of getting to the places you usually have to visit	27%	N=78	52%	N=154	17%	N=50	4%	N=12	0%	N=0	100%	N=293
Quality of overall natural environment in Allegan County	29%	N=83	48%	N=141	16%	N=48	4%	N=12	2%	N=7	100%	N=291
Overall "built environment" of Allegan County (including overall design, buildings, parks and transportation systems)	10%	N=28	39%	N=113	39%	N=114	7%	N=21	5%	N=14	100%	N=291
Health and wellness opportunities in Allegan County	6%	N=19	30%	N=89	36%	N=105	14%	N=42	13%	N=39	100%	N=293
Overall opportunities for education and enrichment	7%	N=21	30%	N=85	37%	N=107	13%	N=39	13%	N=37	100%	N=289
Overall economic health of Allegan County	8%	N=23	29%	N=84	38%	N=112	14%	N=41	11%	N=32	100%	N=292
Sense of community	8%	N=23	49%	N=143	30%	N=87	9%	N=27	4%	N=13	100%	N=293
Overall image or reputation of Allegan County	6%	N=17	37%	N=108	37%	N=107	18%	N=54	2%	N=7	100%	N=293

Table 39: Question 3

Please indicate how likely or unlikely you are to do each of the following:	Very likely		Somewhat likely		Somewhat unlikely		Very unlikely		Don't know		Total	
	%	N	%	N	%	N	%	N	%	N	%	N
Recommend living in Allegan County to someone who asks	36%	N=106	44%	N=129	8%	N=23	10%	N=29	2%	N=5	100%	N=293
Remain in Allegan County for the next five years	63%	N=185	20%	N=60	8%	N=22	5%	N=15	4%	N=11	100%	N=292

Table 40: Question 4

Please rate how safe or unsafe you feel:	Very safe		Somewhat safe		Neither safe nor unsafe		Somewhat unsafe		Very unsafe		Don't know		Total	
	%	N	%	N	%	N	%	N	%	N	%	N	%	N
In your neighborhood during the day	73%	N=214	20%	N=60	3%	N=10	2%	N=6	1%	N=3	0%	N=0	100%	N=293
In Allegan County's downtown/commercial areas during the day	51%	N=149	29%	N=84	6%	N=16	1%	N=3	0%	N=1	13%	N=39	100%	N=292
In your neighborhood at night	47%	N=136	35%	N=102	11%	N=32	3%	N=10	2%	N=7	2%	N=4	100%	N=291
In Allegan County's downtown/commercial areas at night	26%	N=77	30%	N=88	17%	N=49	5%	N=14	2%	N=6	20%	N=58	100%	N=292

The National Community Survey™

Table 41: Question 5

Please rate each of the following characteristics as they relate to Allegan County as a whole:	Excellent		Good		Fair		Poor		Don't know		Total	
	%	N	%	N	%	N	%	N	%	N	%	N
Traffic flow on major streets	19%	N=56	54%	N=159	18%	N=53	7%	N=20	2%	N=6	100%	N=293
Ease of public parking	18%	N=54	46%	N=133	21%	N=60	7%	N=22	8%	N=24	100%	N=292
Ease of travel by car in Allegan County	24%	N=71	58%	N=170	16%	N=46	1%	N=3	1%	N=3	100%	N=293
Ease of travel by public transportation in Allegan County	5%	N=15	11%	N=31	20%	N=59	21%	N=61	43%	N=125	100%	N=291
Ease of travel by bicycle in Allegan County	7%	N=20	23%	N=66	24%	N=68	11%	N=33	35%	N=102	100%	N=289
Ease of walking in Allegan County	16%	N=46	31%	N=91	29%	N=85	8%	N=25	16%	N=47	100%	N=293
Availability of paths and walking trails	10%	N=29	27%	N=78	28%	N=83	13%	N=38	22%	N=64	100%	N=291
Air quality	18%	N=53	54%	N=158	16%	N=46	6%	N=16	7%	N=20	100%	N=293
Cleanliness of Allegan County	10%	N=29	54%	N=159	27%	N=81	6%	N=18	2%	N=6	100%	N=293
Overall appearance of Allegan County	10%	N=30	53%	N=154	28%	N=82	7%	N=21	1%	N=4	100%	N=292
Public places where people want to spend time	8%	N=24	37%	N=109	36%	N=105	11%	N=32	8%	N=23	100%	N=292
Variety of housing options	9%	N=26	26%	N=77	31%	N=90	17%	N=51	17%	N=49	100%	N=293
Availability of affordable quality housing	5%	N=14	24%	N=70	29%	N=84	24%	N=69	18%	N=53	100%	N=289
Fitness opportunities (including exercise classes and paths or trails, etc.)	6%	N=17	21%	N=60	41%	N=118	17%	N=50	15%	N=43	100%	N=288
Recreational opportunities	11%	N=32	37%	N=108	32%	N=94	11%	N=31	9%	N=27	100%	N=292
Availability of affordable quality food	10%	N=30	44%	N=128	29%	N=85	14%	N=41	3%	N=8	100%	N=291
Availability of affordable quality health care	5%	N=16	30%	N=88	34%	N=99	18%	N=53	13%	N=38	100%	N=293
Availability of preventive health services	5%	N=14	23%	N=68	34%	N=99	16%	N=47	22%	N=65	100%	N=293
Availability of affordable quality mental health care	4%	N=10	15%	N=45	22%	N=63	26%	N=76	33%	N=98	100%	N=293

Table 42: Question 6

Please rate each of the following characteristics as they relate to Allegan County as a whole:	Excellent		Good		Fair		Poor		Don't know		Total	
	%	N	%	N	%	N	%	N	%	N	%	N
Availability of affordable quality child care/preschool	3%	N=9	18%	N=51	14%	N=41	13%	N=38	52%	N=152	100%	N=292
K-12 education	12%	N=33	37%	N=108	21%	N=60	6%	N=17	25%	N=72	100%	N=290
Adult educational opportunities	3%	N=9	19%	N=54	23%	N=67	9%	N=25	46%	N=131	100%	N=286
Opportunities to attend cultural/arts/music activities	4%	N=10	25%	N=71	35%	N=99	14%	N=40	23%	N=66	100%	N=286
Opportunities to participate in religious or spiritual events and activities	20%	N=56	36%	N=102	21%	N=60	2%	N=6	21%	N=61	100%	N=285
Employment opportunities	8%	N=23	21%	N=61	36%	N=104	18%	N=52	17%	N=48	100%	N=287
Shopping opportunities	8%	N=22	26%	N=76	40%	N=116	22%	N=65	3%	N=9	100%	N=287
Cost of living in Allegan County	12%	N=35	35%	N=102	34%	N=97	15%	N=44	4%	N=12	100%	N=289
Overall quality of business and service establishments in Allegan County	7%	N=19	44%	N=128	36%	N=102	8%	N=24	5%	N=15	100%	N=288
Vibrant downtown/commercial areas	4%	N=12	29%	N=85	41%	N=120	14%	N=40	12%	N=34	100%	N=290
Overall quality of new development in Allegan County	6%	N=18	31%	N=89	33%	N=97	9%	N=26	21%	N=61	100%	N=290
Opportunities to participate in social events and activities	5%	N=13	27%	N=79	40%	N=117	8%	N=23	20%	N=59	100%	N=291
Opportunities to volunteer	9%	N=27	30%	N=88	25%	N=74	5%	N=16	30%	N=87	100%	N=293
Opportunities to participate in community matters	5%	N=14	32%	N=91	28%	N=81	10%	N=28	25%	N=72	100%	N=287
Openness and acceptance of the community toward people of diverse backgrounds	8%	N=22	32%	N=94	24%	N=70	14%	N=42	21%	N=63	100%	N=291
Neighborliness of residents in Allegan County	12%	N=36	37%	N=107	34%	N=100	8%	N=23	9%	N=25	100%	N=292

The National Community Survey™

Table 43: Question 7

Please indicate whether or not you have done each of the following in the last 12 months.	No		Yes		Total	
	%	N	%	N	%	N
Made efforts to conserve water	28%	N=82	72%	N=210	100%	N=293
Made efforts to make your home more energy efficient	16%	N=47	84%	N=244	100%	N=292
Observed a code violation or other hazard in Allegan County (weeds, abandoned buildings, etc.)	64%	N=185	36%	N=104	100%	N=288
Household member was a victim of a crime in Allegan County	87%	N=253	13%	N=37	100%	N=290
Reported a crime to law enforcement in Allegan County	81%	N=235	19%	N=55	100%	N=291
Stocked supplies in preparation for an emergency	67%	N=195	33%	N=96	100%	N=292
Campaigned or advocated for an issue, cause or candidate	85%	N=248	15%	N=44	100%	N=292
Contacted the County of Allegan County (in-person, phone, email or web) for help or information	68%	N=200	32%	N=92	100%	N=293
Contacted Allegan County elected officials (in-person, phone, email or web) to express your opinion	87%	N=253	13%	N=38	100%	N=292

Table 44: Question 8

In the last 12 months, about how many times, if at all, have you or other household members done each of the following in Allegan County?	2 times a week or more		2-4 times a month		Once a month or less		Not at all		Total	
	%	N	%	N	%	N	%	N	%	N
Used Allegan County recreation centers or their services	3%	N=9	6%	N=18	34%	N=98	57%	N=165	100%	N=290
Visited a neighborhood park or County park	5%	N=13	23%	N=66	48%	N=138	25%	N=73	100%	N=290
Used Allegan County public libraries or their services	9%	N=25	16%	N=46	30%	N=89	45%	N=132	100%	N=292
Participated in religious or spiritual activities in Allegan County	11%	N=33	16%	N=47	16%	N=48	56%	N=164	100%	N=292
Attended a County-sponsored event	0%	N=0	2%	N=6	32%	N=93	66%	N=192	100%	N=291
Used bus, rail, subway or other public transportation instead of driving	0%	N=0	1%	N=3	3%	N=9	96%	N=280	100%	N=292
Carpooled with other adults or children instead of driving alone	8%	N=23	10%	N=30	21%	N=62	61%	N=176	100%	N=291
Walked or biked instead of driving	3%	N=10	9%	N=27	21%	N=60	67%	N=192	100%	N=288
Volunteered your time to some group/activity in Allegan County	5%	N=15	7%	N=21	17%	N=50	71%	N=205	100%	N=291
Participated in a club	3%	N=10	12%	N=36	8%	N=23	76%	N=223	100%	N=291
Talked to or visited with your immediate neighbors	24%	N=69	35%	N=104	30%	N=88	11%	N=31	100%	N=292
Done a favor for a neighbor	11%	N=33	32%	N=93	37%	N=109	20%	N=59	100%	N=293

Table 45: Question 9

Thinking about local public meetings (of local elected officials like County Council or County Commissioners, advisory boards, town halls, HOA, neighborhood watch, etc.), in the last 12 months, about how many times, if at all, have you or other household members attended or watched a local public meeting?	2 times a week or more		2-4 times a month		Once a month or less		Not at all		Total	
	%	N	%	N	%	N	%	N	%	N
Attended a local public meeting	0%	N=1	2%	N=5	18%	N=51	80%	N=232	100%	N=290
Watched (online or on television) a local public meeting	0%	N=1	1%	N=2	8%	N=22	91%	N=264	100%	N=288

Table 46: Question 10

Please rate the quality of each of the following services provided in your community, keeping in mind that services may not be provided by Allegan County government:	Excellent		Good		Fair		Poor		Don't know		Total	
	%	N	%	N	%	N	%	N	%	N	%	N
Sheriff services	26%	N=71	43%	N=119	14%	N=39	7%	N=21	10%	N=29	100%	N=280
Fire services	34%	N=95	38%	N=106	9%	N=27	2%	N=6	17%	N=48	100%	N=281
Ambulance or emergency medical services	29%	N=81	40%	N=112	11%	N=30	2%	N=6	18%	N=52	100%	N=281
Crime prevention	15%	N=41	38%	N=105	17%	N=46	3%	N=10	27%	N=76	100%	N=278

The National Community Survey™

Please rate the quality of each of the following services provided in your community, keeping in mind that services may not be provided by Allegan County government:	Excellent		Good		Fair		Poor		Don't know		Total	
	%	N	%	N	%	N	%	N	%	N	%	N
Fire prevention and fire education	19%	N=52	31%	N=86	18%	N=50	1%	N=3	31%	N=87	100%	N=278
Traffic enforcement	17%	N=47	34%	N=95	29%	N=80	7%	N=21	13%	N=35	100%	N=278
Street repair	4%	N=11	24%	N=66	36%	N=100	35%	N=97	2%	N=6	100%	N=279
Street lighting	5%	N=14	36%	N=100	36%	N=100	16%	N=45	6%	N=16	100%	N=276
Snow removal	14%	N=39	36%	N=99	32%	N=89	17%	N=48	1%	N=4	100%	N=279
Traffic signal timing	10%	N=29	41%	N=115	25%	N=68	10%	N=28	13%	N=37	100%	N=277
Bus or transit services	4%	N=11	7%	N=20	11%	N=29	11%	N=30	67%	N=185	100%	N=276
Garbage collection	25%	N=69	45%	N=126	15%	N=42	4%	N=12	10%	N=28	100%	N=278
Recycling	21%	N=58	35%	N=98	13%	N=36	13%	N=37	19%	N=53	100%	N=281
Storm drainage	11%	N=31	32%	N=89	21%	N=58	13%	N=35	23%	N=64	100%	N=276
Drinking water	18%	N=50	36%	N=100	18%	N=49	12%	N=35	16%	N=45	100%	N=278
Sewer services	12%	N=33	24%	N=65	13%	N=34	3%	N=9	48%	N=128	100%	N=268
Power (electric and/or gas) utility	20%	N=56	45%	N=127	22%	N=62	9%	N=25	4%	N=10	100%	N=280
Utility billing	16%	N=45	47%	N=130	22%	N=62	7%	N=20	8%	N=22	100%	N=279
County parks	13%	N=36	49%	N=137	19%	N=53	2%	N=6	16%	N=46	100%	N=278
Recreation programs or classes	4%	N=11	19%	N=53	15%	N=41	5%	N=14	57%	N=160	100%	N=279
Recreation centers or facilities	4%	N=11	25%	N=70	17%	N=48	8%	N=22	46%	N=129	100%	N=279
Land use, planning and zoning	4%	N=10	27%	N=75	21%	N=58	11%	N=30	38%	N=104	100%	N=276
Code enforcement (weeds, abandoned buildings, etc.)	3%	N=9	21%	N=59	29%	N=81	15%	N=42	32%	N=88	100%	N=280
Animal control	4%	N=11	33%	N=93	24%	N=66	7%	N=19	32%	N=90	100%	N=279
Economic development	2%	N=7	22%	N=61	27%	N=75	12%	N=34	37%	N=104	100%	N=281
Health services	4%	N=12	29%	N=80	26%	N=71	15%	N=43	26%	N=71	100%	N=277
Public library services	26%	N=75	39%	N=111	13%	N=37	2%	N=4	20%	N=56	100%	N=283
Public information services	6%	N=16	29%	N=80	24%	N=66	7%	N=19	34%	N=95	100%	N=275
Cable television	5%	N=15	22%	N=61	16%	N=45	28%	N=77	29%	N=82	100%	N=279
Emergency preparedness (services that prepare the community for natural disasters or other emergency situations)	7%	N=19	17%	N=47	19%	N=51	14%	N=38	44%	N=120	100%	N=274
Preservation of natural areas such as open space, farmlands and greenbelts	10%	N=28	32%	N=88	25%	N=67	7%	N=18	26%	N=70	100%	N=272
Allegan County open space	14%	N=38	33%	N=92	16%	N=45	8%	N=21	29%	N=79	100%	N=275
Overall customer service by Allegan County employees (Sheriff, receptionists, planners, etc.)	15%	N=43	39%	N=107	17%	N=48	6%	N=18	23%	N=64	100%	N=279
Internet/broadband services	6%	N=17	19%	N=52	21%	N=59	37%	N=105	17%	N=47	100%	N=280
Mental health and addiction services	2%	N=6	13%	N=34	21%	N=57	14%	N=39	50%	N=139	100%	N=276
Allegan County Public Health (e.g. well/septic permits, immunizations)	3%	N=8	25%	N=68	23%	N=63	8%	N=23	41%	N=112	100%	N=274
Supportive services for seniors	6%	N=15	15%	N=41	17%	N=48	8%	N=23	54%	N=150	100%	N=277
Recreational programs for youth (under age 18)	4%	N=11	13%	N=36	16%	N=46	8%	N=23	59%	N=164	100%	N=280
Recreational programs for adults (ages 18-59)	2%	N=7	8%	N=23	17%	N=48	13%	N=37	59%	N=165	100%	N=280
Recreational programs for older adults (ages 60 and older)	2%	N=6	8%	N=23	12%	N=35	12%	N=33	65%	N=183	100%	N=280

The National Community Survey™

Table 47: Question 11

Based on your understanding of the services provided by each of the following entities, how would you rate the quality of the services provided by:	Excellent		Good		Fair		Poor		Don't know		Total	
	%	N	%	N	%	N	%	N	%	N	%	N
Your local government (City or Township)	14%	N=39	44%	N=126	24%	N=70	11%	N=30	7%	N=21	100%	N=285
Allegan County	7%	N=19	46%	N=132	28%	N=79	9%	N=24	10%	N=30	100%	N=284
The Federal Government	3%	N=10	23%	N=66	34%	N=97	26%	N=73	14%	N=39	100%	N=285

Table 48: Question 12

Please rate the following categories of Allegan County government performance:	Excellent		Good		Fair		Poor		Don't know		Total	
	%	N	%	N	%	N	%	N	%	N	%	N
The value of services for the taxes paid to Allegan County	6%	N=17	32%	N=91	41%	N=116	11%	N=32	10%	N=29	100%	N=285
The overall direction that Allegan County is taking	5%	N=14	36%	N=103	29%	N=82	10%	N=29	20%	N=58	100%	N=286
The job Allegan County government does at welcoming resident involvement	4%	N=11	21%	N=61	24%	N=68	14%	N=40	37%	N=106	100%	N=286
Overall confidence in Allegan County government	6%	N=17	32%	N=92	29%	N=82	15%	N=44	18%	N=51	100%	N=286
Generally acting in the best interest of the community	8%	N=23	33%	N=95	28%	N=81	12%	N=36	18%	N=50	100%	N=285
Being honest	8%	N=24	28%	N=79	28%	N=80	12%	N=34	23%	N=65	100%	N=281
Treating all residents fairly	9%	N=26	27%	N=78	31%	N=88	12%	N=35	20%	N=58	100%	N=286

Table 49: Question 13

Please rate how important, if at all, you think it is for the Allegan County community to focus on each of the following in the coming two years:	Essential		Very important		Somewhat important		Not at all important		Total	
	%	N	%	N	%	N	%	N	%	N
Overall feeling of safety in Allegan County	43%	N=123	43%	N=125	12%	N=34	2%	N=6	100%	N=288
Overall ease of getting to the places you usually have to visit	20%	N=57	50%	N=143	26%	N=75	4%	N=11	100%	N=286
Quality of overall natural environment in Allegan County	33%	N=93	43%	N=125	23%	N=65	1%	N=4	100%	N=286
Overall "built environment" of Allegan County (including overall design, buildings, parks and transportation systems)	16%	N=45	41%	N=120	37%	N=107	6%	N=17	100%	N=288
Health and wellness opportunities in Allegan County	31%	N=91	40%	N=116	24%	N=70	4%	N=13	100%	N=289
Overall opportunities for education and enrichment	29%	N=84	47%	N=136	19%	N=54	5%	N=13	100%	N=287
Overall economic health of Allegan County	35%	N=101	49%	N=142	15%	N=42	1%	N=3	100%	N=288
Sense of community	23%	N=65	46%	N=133	28%	N=81	3%	N=9	100%	N=288

Table 50: Question 14

In 1965, Allegan County voters established a tax limitation of 5.7 mills for County services. Due to State tax formulas, in 2019 the limitation has been reduced to 4.54 mills. Please indicate whether you would support or oppose restoring the tax limitation to 5.7 mills if the County were to use the additional funds to maintain or expand public services and reduce public debt? (The additional yearly cost to taxpayers would be up to \$57.97 for a home with market value of \$100,000).	Percent	Number
	Strongly support	16%
Somewhat support	36%	N=104
Somewhat oppose	17%	N=48
Strongly oppose	17%	N=50
Don't know	14%	N=41
Total	100%	N=288

The National Community Survey™

Table 51: Question 15

If you support restoring the tax limitation to 5.7 mills, please indicate how you would prioritize the use of the additional funds:	High priority		Medium priority		Low priority		Don't know		Total	
	%	N	%	N	%	N	%	N	%	N
Improve public safety (add Deputies): If you support restoring the tax limitation to 5.7 mills, please indicate how you would prioritize the use of the additional funds:	42%	N=90	27%	N=58	23%	N=50	8%	N=18	100%	N=214
Restore/expand bus transportation	21%	N=45	26%	N=55	40%	N=84	13%	N=28	100%	N=212
Maintain service levels at the County medical care facility for older adults (Dumont complex)	29%	N=63	39%	N=85	21%	N=46	11%	N=25	100%	N=219
Reduce public employee pension debt	11%	N=23	27%	N=57	43%	N=91	20%	N=42	100%	N=213

Table 52: Question 16

How much of a problem, if at all, do you think these issues are in Allegan County?	Major problem		Moderate problem		Minor problem		Not a problem		Don't know		Total	
	%	N	%	N	%	N	%	N	%	N	%	N
Animal problems (animals running at large, barking dogs)	7%	N=20	14%	N=39	31%	N=88	44%	N=126	5%	N=14	100%	N=287
Traffic problems (e.g., residential speeding, aggressive drivers)	9%	N=26	26%	N=73	36%	N=103	25%	N=71	4%	N=11	100%	N=284
School safety (e.g., bullying, fighting, or weapons)	12%	N=34	26%	N=74	26%	N=75	9%	N=25	28%	N=80	100%	N=287
Child abuse and child sexual assault	12%	N=34	25%	N=71	17%	N=50	9%	N=27	37%	N=105	100%	N=288
Domestic violence (adult)	12%	N=34	24%	N=69	23%	N=67	6%	N=18	34%	N=99	100%	N=289
Sexual assault/rape (adult)	8%	N=24	17%	N=50	22%	N=63	11%	N=31	42%	N=121	100%	N=289
Elder abuse and financial crimes against the elderly	8%	N=24	15%	N=44	24%	N=71	12%	N=36	39%	N=114	100%	N=289
Driving under the influence (i.e., alcohol or drugs)	22%	N=63	37%	N=107	20%	N=57	8%	N=24	13%	N=39	100%	N=289
Underage drinking	20%	N=58	33%	N=96	16%	N=47	10%	N=27	20%	N=59	100%	N=287
Drug abuse (e.g., manufacture, sale, or use of illegal/prescription drugs)	35%	N=100	35%	N=102	9%	N=25	5%	N=13	17%	N=48	100%	N=289

Table 53: Question 17

Please rate each of the following aspects of child care in Allegan County:	Excellent		Good		Fair		Poor		Don't know		Total	
	%	N	%	N	%	N	%	N	%	N	%	N
High quality, affordable infant care	2%	N=5	7%	N=19	15%	N=43	12%	N=35	64%	N=180	100%	N=281
High quality, affordable toddler/preschool care	2%	N=5	10%	N=27	16%	N=46	11%	N=30	62%	N=173	100%	N=281
Child care that meets my regular scheduling needs	2%	N=4	8%	N=24	9%	N=25	12%	N=34	69%	N=193	100%	N=280
Child care that meets my irregular scheduling needs (e.g., during school breaks or evenings/weekends)	2%	N=6	4%	N=11	8%	N=23	15%	N=43	70%	N=197	100%	N=280
Resources to support families with young children (prenatal-5 years old)	2%	N=5	7%	N=20	11%	N=32	12%	N=33	68%	N=190	100%	N=280

Table 54: Question 18

Please indicate how much of a source, if at all, you consider each of the following to be for obtaining information about the County government and its activities, events and services:	Major source		Minor source		Not a source		Total	
	%	N	%	N	%	N	%	N
County communications via U.S. mail	48%	N=132	28%	N=78	24%	N=66	100%	N=276
Local newspapers	27%	N=74	37%	N=104	36%	N=101	100%	N=280
County website (allegancounty.org)	33%	N=90	38%	N=104	29%	N=81	100%	N=276
County email notifications	26%	N=71	32%	N=89	42%	N=116	100%	N=276
Social media (e.g., Facebook, Twitter)	29%	N=79	31%	N=85	40%	N=112	100%	N=276
Talking with County officials or County staff, or attending public meetings	14%	N=37	45%	N=125	41%	N=113	100%	N=275
Word of mouth	32%	N=90	44%	N=122	24%	N=67	100%	N=279

The National Community Survey™

Table 55: Question D1

How often, if at all, do you do each of the following, considering all of the times you could?	Never		Rarely		Sometimes		Usually		Always		Total	
Recycle at home	12%	N=35	8%	N=24	21%	N=61	13%	N=38	46%	N=134	100%	N=291
Purchase goods or services from a business located in Allegan County	1%	N=4	6%	N=16	32%	N=93	46%	N=134	15%	N=43	100%	N=290
Eat at least 5 portions of fruits and vegetables a day	3%	N=8	23%	N=68	37%	N=108	26%	N=74	11%	N=32	100%	N=289
Participate in moderate or vigorous physical activity	5%	N=15	19%	N=56	34%	N=98	28%	N=81	14%	N=40	100%	N=290
Read or watch local news (via television, paper, computer, etc.)	7%	N=19	14%	N=41	19%	N=53	30%	N=86	31%	N=89	100%	N=288
Vote in local elections	8%	N=24	3%	N=10	12%	N=36	24%	N=69	52%	N=153	100%	N=291

Table 56: Question D2

Would you say that in general your health is:	Percent	Number
Excellent	17%	N=50
Very good	37%	N=109
Good	35%	N=101
Fair	8%	N=23
Poor	3%	N=8
Total	100%	N=290

Table 57: Question D3

What impact, if any, do you think the economy will have on your family income in the next 6 months? Do you think the impact will be:	Percent	Number
Very positive	14%	N=40
Somewhat positive	17%	N=50
Neutral	52%	N=152
Somewhat negative	12%	N=36
Very negative	4%	N=11
Total	100%	N=289

Table 58: Question D4

What is your employment status?	Percent	Number
Working full time for pay	55%	N=160
Working part time for pay	10%	N=28
Unemployed, looking for paid work	2%	N=6
Unemployed, not looking for paid work	6%	N=17
Fully retired	27%	N=77
Total	100%	N=288

Table 59: Question D5

Do you work inside the boundaries of Allegan County?	Percent	Number
Yes, outside the home	33%	N=93
Yes, from home	10%	N=27
No	57%	N=158
Total	100%	N=278

The National Community Survey™

Table 60: Question D6

How many years have you lived in Allegan County?	Percent	Number
Less than 2 years	7%	N=19
2 to 5 years	14%	N=40
6 to 10 years	12%	N=36
11 to 20 years	14%	N=41
More than 20 years	53%	N=153
Total	100%	N=290

Table 61: Question D7

Which best describes the building you live in?	Percent	Number
One family house detached from any other houses	83%	N=240
Building with two or more homes (duplex, townhome, apartment or condominium)	11%	N=32
Mobile home	5%	N=15
Other	1%	N=3
Total	100%	N=290

Table 62: Question D8

Is this house, apartment or mobile home...	Percent	Number
Rented	16%	N=46
Owned	84%	N=243
Total	100%	N=289

Table 63: Question D9

About how much is your monthly housing cost for the place you live (including rent, mortgage payment, property tax, property insurance and homeowners' association (HOA) fees)?	Percent	Number
Less than \$300 per month	7%	N=19
\$300 to \$599 per month	19%	N=53
\$600 to \$999 per month	29%	N=78
\$1,000 to \$1,499 per month	25%	N=69
\$1,500 to \$2,499 per month	16%	N=43
\$2,500 or more per month	4%	N=11
Total	100%	N=274

Table 64: Question D10

Please indicate how many people in each age range live in your household	Mean	Count
Average number of each per household		
Number of children age 0-5	.25	N=293
Number of children age 6-17	.56	N=293
Number of adults age 18 or older	1.91	N=293
Total persons in household	2.72	N=293

The National Community Survey™

Table 65: Question D11

Are you or any other members of your household aged 65 or older?	Percent	Number
No	69%	N=199
Yes	31%	N=90
Total	100%	N=289

Table 66: Question D12

How much do you anticipate your household's total income before taxes will be for the current year? (Please include in your total income money from all sources for all persons living in your household.)	Percent	Number
Less than \$25,000	13%	N=34
\$25,000 to \$37,499	13%	N=34
\$37,500 to \$49,999	9%	N=23
\$50,000 to \$61,999	16%	N=42
\$62,000 to \$99,999	25%	N=66
\$100,000 to \$149,999	16%	N=43
\$150,000 or more	8%	N=22
Total	100%	N=263

Table 67: Question D13

Are you Spanish, Hispanic or Latino?	Percent	Number
No, not Spanish, Hispanic or Latino	98%	N=282
Yes, I consider myself to be Spanish, Hispanic or Latino	2%	N=6
Total	100%	N=287

Table 68: Question D14

What is your race? (Mark one or more races to indicate what race(s) you consider yourself to be.)	Percent	Number
American Indian or Alaskan Native	2%	N=6
Asian, Asian Indian or Pacific Islander	0%	N=0
Black or African American	0%	N=0
White	95%	N=270
Other	5%	N=14

Total may exceed 100% as respondents could select more than one option.

Table 69: Question D15

In which category is your age?	Percent	Number
18-24 years	5%	N=14
25-34 years	17%	N=50
35-44 years	14%	N=41
45-54 years	21%	N=61
55-59 years	7%	N=21
60-64 years	12%	N=34
65-74 years	14%	N=41
75 years or older	9%	N=27
Total	100%	N=288

The National Community Survey™

Table 70: Question D16

What is your sex?	Percent	Number
Female	49%	N=140
Male	51%	N=144
Total	100%	N=284

Table 71: Question D17

Do you consider a cell phone or landline your primary telephone number?	Percent	Number
Cell	74%	N=213
Land line	16%	N=47
Both	10%	N=30
Total	100%	N=289

Table 72: Question D18

What is the highest grade of school or year of college that you have completed?	Percent	Number
Grade school	1%	N=4
High school degree or GED	31%	N=89
Some college/Associate's degree	40%	N=115
Bachelor's degree	18%	N=52
Post-bachelor's degree/Graduate degree	10%	N=29
Total	100%	N=288

Appendix B: Benchmark Comparisons

Comparison Data

NRC’s database of comparative resident opinion is comprised of resident perspectives gathered in surveys from over 600 communities whose residents evaluated the same kinds of topics on The National Community Survey. The comparison evaluations are from the most recent survey completed in each community; most communities conduct surveys every year or in alternating years. NRC adds the latest results quickly upon survey completion, keeping the benchmark data fresh and relevant. The communities in the database represent a wide geographic and population range. Allegan County chose to have comparisons made to the entire database.

Interpreting the Results

Ratings are compared when there are at least five communities in which a similar question was asked. Where comparisons are available, four columns are provided in the table. The first column is Allegan County’s “percent positive.” The percent positive is the combination of the top two most positive response options (i.e., “excellent” and “good,” “very safe” and “somewhat safe,” etc.), or, in the case of resident behaviors/participation, the percent positive represents the proportion of respondents indicating “yes” or participating in an activity at least once a month. The second column is the rank assigned to Allegan County’s rating among communities where a similar question was asked. The third column is the number of communities that asked a similar question. The final column shows the comparison of Allegan County’s rating to the benchmark.

In that final column, Allegan County’s results are noted as being “higher” than the benchmark, “lower” than the benchmark or “similar” to the benchmark, meaning that the average rating given by Allegan County residents is statistically similar to or different (greater or lesser) than the benchmark. Being rated as “higher” or “lower” than the benchmark means that Allegan County’s average rating for a particular item was more than 10 points different than the benchmark. If a rating was “much higher” or “much lower,” then Allegan County’s average rating was more than 20 points different when compared to the benchmark.

Benchmark Database Characteristics	
Region	Percent
New England	3%
Middle Atlantic	5%
East North Central	15%
West North Central	13%
South Atlantic	22%
East South Central	3%
West South Central	7%
Mountain	16%
Pacific	16%
Population	Percent
Less than 10,000	10%
10,000 to 24,999	22%
25,000 to 49,999	23%
50,000 to 99,999	22%
100,000 or more	23%

National Benchmark Comparisons

Table 73: Community Characteristics General

	Percent positive	Rank	Number of communities in comparison	Comparison to benchmark
The overall quality of life in Allegan County	77%	297	434	Similar
Overall image or reputation of Allegan County	44%	300	342	Lower
Allegan County as a place to live	76%	292	379	Similar
Your neighborhood as a place to live	83%	166	310	Similar
Allegan County as a place to raise children	76%	225	370	Similar
Allegan County as a place to retire	59%	230	350	Similar
Overall appearance of Allegan County	64%	247	341	Similar

Table 74: Community Characteristics by Facet

		Percent positive	Rank	Number of communities in comparison	Comparison to benchmark	
Safety	Overall feeling of safety in Allegan County	79%	232	351	Similar	
	In your neighborhood during the day	93%	169	348	Similar	
	In Allegan County's downtown/commercial areas during the day	92%	149	316	Similar	
Mobility	Overall ease of getting to the places you usually have to visit	79%	121	275	Similar	
	Availability of paths and walking trails	47%	251	311	Lower	
	Ease of walking in Allegan County	56%	189	305	Similar	
	Ease of travel by bicycle in Allegan County	46%	186	304	Similar	
	Ease of travel by public transportation in Allegan County	28%	159	238	Similar	
	Ease of travel by car in Allegan County	83%	43	303	Higher	
	Ease of public parking	70%	44	233	Higher	
	Traffic flow on major streets	75%	20	331	Higher	
	Natural Environment	Quality of overall natural environment in Allegan County	79%	146	277	Similar
Cleanliness of Allegan County		66%	206	284	Similar	
Air quality		77%	159	246	Similar	
Built Environment	Overall "built environment" of Allegan County (including overall design, buildings, parks and transportation systems)	51%	185	266	Similar	
	Overall quality of new development in Allegan County	46%	205	291	Similar	
	Availability of affordable quality housing	35%	177	300	Similar	
	Variety of housing options	42%	201	279	Similar	
	Public places where people want to spend time	49%	215	260	Lower	
	Overall economic health of Allegan County	41%	221	272	Lower	
	Vibrant downtown/commercial areas	38%	166	249	Similar	
	Overall quality of business and service establishments in Allegan County	54%	205	274	Similar	
	Cost of living in Allegan County	49%	102	268	Similar	
Economy	Shopping opportunities	35%	232	292	Lower	
	Employment opportunities	35%	181	309	Similar	
	Allegan County as a place to visit	61%	173	287	Similar	
	Allegan County as a place to work	50%	258	354	Similar	
	Recreation and Wellness	Health and wellness opportunities in Allegan County	42%	252	267	Lower
		Availability of affordable quality mental health care	29%	201	236	Lower
Availability of preventive health services		36%	221	240	Lower	
Availability of affordable quality health care		41%	231	259	Lower	
Availability of affordable quality food		56%	203	246	Similar	

The National Community Survey™

		Percent positive	Rank	Number of communities in comparison	Comparison to benchmark
	Recreational opportunities	53%	236	292	Similar
	Fitness opportunities (including exercise classes and paths or trails, etc.)	31%	254	258	Much lower
Education and Enrichment	Overall opportunities for education and enrichment	42%	244	269	Lower
	Opportunities to participate in religious or spiritual events and activities	70%	151	207	Similar
	Opportunities to attend cultural/arts/music activities	37%	254	289	Lower
	Adult educational opportunities	41%	200	246	Similar
	K-12 education	65%	187	270	Similar
	Availability of affordable quality child care/preschool	43%	202	259	Similar
Community Engagement	Opportunities to participate in social events and activities	40%	238	265	Lower
	Neighborhoodliness of Allegan County	54%	191	261	Similar
	Openness and acceptance of the community toward people of diverse backgrounds	51%	249	292	Similar
	Opportunities to participate in community matters	49%	249	275	Lower
	Opportunities to volunteer	56%	231	266	Similar

Table 75: Governance General

	Percent positive	Rank	Number of communities in comparison	Comparison to benchmark
Services provided by the County of Allegan County	59%	350	404	Lower
Overall customer service by Allegan County employees (police, receptionists, planners, etc.)	70%	263	370	Similar
Value of services for the taxes paid to Allegan County	42%	266	388	Similar
Overall direction that Allegan County is taking	51%	222	313	Similar
Job Allegan County government does at welcoming resident involvement	40%	266	316	Similar
Overall confidence in Allegan County government	46%	196	273	Similar
Generally acting in the best interest of the community	50%	182	273	Similar
Being honest	47%	187	264	Similar
Treating all residents fairly	46%	185	270	Similar
Services provided by the Federal Government	31%	235	253	Similar

Table 76: Governance by Facet

	Percent positive	Rank	Number of communities in comparison	Comparison to benchmark	
Safety	Sheriff services	76%	298	429	Similar
	Fire services	86%	256	367	Similar
	Ambulance or emergency medical services	84%	239	329	Similar
	Crime prevention	73%	163	352	Similar
	Fire prevention and fire education	72%	179	284	Similar
	Animal control	55%	240	320	Similar
	Emergency preparedness (services that prepare the community for natural disasters or other emergency situations)	42%	260	278	Lower
Mobility	Traffic enforcement	58%	194	356	Similar
	Street repair	28%	299	361	Lower
	Street lighting	44%	275	318	Lower
	Snow removal	50%	213	268	Similar
	Traffic signal timing	60%	70	263	Similar
Natural Environment	Bus or transit services	35%	176	232	Similar
Natural Environment	Garbage collection	78%	254	335	Similar
	Recycling	68%	285	343	Similar

The National Community Survey™

		Percent positive	Rank	Number of communities in comparison	Comparison to benchmark
	Drinking water	64%	206	300	Similar
	Preservation of natural areas such as open space, farmlands and greenbelts	58%	145	255	Similar
	Allegan County open space	66%	100	242	Similar
	Storm drainage	57%	235	334	Similar
	Sewer services	70%	205	306	Similar
	Power (electric and/or gas) utility	68%	156	188	Similar
	Utility billing	68%	139	235	Similar
	Land use, planning and zoning	49%	156	297	Similar
Built Environment	Code enforcement (weeds, abandoned buildings, etc.)	36%	287	375	Similar
	Cable television	38%	187	202	Lower
Economy	Economic development	38%	224	283	Similar
	County parks	74%	239	313	Similar
Recreation and Wellness	Recreation programs or classes	54%	269	314	Lower
	Recreation centers or facilities	54%	242	277	Lower
	Health services	45%	204	223	Lower
Education and Enrichment	Public library services	82%	205	323	Similar
Community Engagement	Public information services	53%	251	286	Similar

Table 77: Participation General

	Percent positive	Rank	Number of communities in comparison	Comparison to benchmark
Sense of community	59%	218	304	Similar
Recommend living in Allegan County to someone who asks	82%	203	284	Similar
Remain in Allegan County for the next five years	87%	99	278	Similar
Contacted Allegan County (in-person, phone, email or web) for help or information	32%	296	321	Lower

Table 78: Participation by Facet

		Percent positive	Rank	Number of communities in comparison	Comparison to benchmark
	Stocked supplies in preparation for an emergency	33%	123	237	Similar
	Did NOT report a crime to law enforcement	81%	136	265	Similar
Safety	Household member was NOT a victim of a crime	87%	191	273	Similar
	Used bus, rail, subway or other public transportation instead of driving	4%	203	218	Much lower
	Carpooled with other adults or children instead of driving alone	39%	161	252	Similar
Mobility	Walked or biked instead of driving	33%	243	261	Much lower
	Made efforts to conserve water	72%	221	246	Similar
	Made efforts to make your home more energy efficient	84%	15	248	Similar
Natural Environment	Recycle at home	80%	204	260	Similar
Built Environment	Did NOT observe a code violation or other hazard in Allegan County	64%	54	255	Higher
	NOT experiencing housing costs stress	77%	51	259	Similar
	Purchase goods or services from a business located in Allegan County	93%	230	258	Similar
	Economy will have positive impact on income	31%	142	260	Similar
Economy	Work inside boundaries of Allegan County	43%	98	259	Similar

The National Community Survey™

		Percent positive	Rank	Number of communities in comparison	Comparison to benchmark
Recreation and Wellness	Used Allegan County recreation centers or their services	43%	222	240	Lower
	Visited a neighborhood park or County park	75%	231	269	Similar
	Eat at least 5 portions of fruits and vegetables a day	74%	238	249	Similar
	Participate in moderate or vigorous physical activity	76%	243	254	Similar
	In very good to excellent health	55%	204	254	Similar
Education and Enrichment	Used Allegan County public libraries or their services	55%	194	249	Similar
	Participated in religious or spiritual activities in Allegan County	44%	101	206	Similar
	Attended County-sponsored event	34%	253	263	Much lower
Community Engagement	Campaigned or advocated for an issue, cause or candidate	15%	219	242	Similar
	Contacted Allegan County elected officials (in-person, phone, email or web) to express your opinion	13%	200	256	Similar
	Volunteered your time to some group/activity in Allegan County	29%	203	266	Similar
	Participated in a club	24%	144	246	Similar
	Talked to or visited with your immediate neighbors	89%	171	256	Similar
	Done a favor for a neighbor	80%	153	251	Similar
	Attended a local public meeting	20%	145	265	Similar
	Watched (online or on television) a local public meeting	9%	228	235	Lower
	Read or watch local news (via television, paper, computer, etc.)	79%	203	259	Similar
	Vote in local elections	88%	65	261	Similar

Communities included in national comparisons

The communities included in Allegan County’s comparisons are listed on the following pages along with their population according to the American Community Survey (ACS) 2017 5-year estimates.

Adams County, CO	487,850	Avondale city, AZ	81,590
Airway Heights city, WA	8,017	Azusa city, CA	49,029
Albany city, OR	52,007	Bainbridge Island city, WA	23,689
Albemarle County, VA	105,105	Baltimore city, MD	619,796
Albert Lea city, MN	17,716	Baltimore County, MD	828,637
Alexandria city, VA	154,710	Battle Creek city, MI	51,505
Allegan County, MI	114,145	Bay Village city, OH	15,426
American Canyon city, CA	20,341	Baytown city, TX	76,205
Ames city, IA	65,005	Bedford city, TX	49,082
Ankeny city, IA	56,237	Bedford town, MA	14,105
Ann Arbor city, MI	119,303	Bellevue city, WA	139,014
Apache Junction city, AZ	38,452	Bellingham city, WA	85,388
Arapahoe County, CO	626,612	Bend city, OR	87,167
Arlington city, TX	388,225	Bethlehem township, PA	23,800
Arvada city, CO	115,320	Bettendorf city, IA	35,293
Asheville city, NC	89,318	Billings city, MT	109,082
Ashland city, OR	20,733	Bloomington city, IN	83,636
Ashland town, MA	17,478	Bloomington city, MN	85,417
Ashland town, VA	7,554	Boise City city, ID	220,859
Aspen city, CO	7,097	Bonner Springs city, KS	7,644
Athens-Clarke County unified government (balance),	122,292	Boulder city, CO	106,271
Auburn city, AL	61,462	Bowling Green city, KY	64,302
Augusta CCD, GA	136,103	Bozeman city, MT	43,132
Aurora city, CO	357,323	Brentwood city, TN	41,524
Austin city, TX	916,906	Brighton city, CO	38,016
Avon town, CO	6,503	Brookline CDP, MA	59,246
Avon town, IN	16,479	Brooklyn Center city, MN	30,885

The National Community Survey™

Brooklyn city, OH	10,891	Dearborn city, MI	95,295
Broomfield city, CO	64,283	Decatur city, GA	22,022
Brownsburg town, IN	24,625	Del Mar city, CA	4,338
Buffalo Grove village, IL	41,551	DeLand city, FL	30,315
Burlingame city, CA	30,401	Delaware city, OH	38,193
Cabarrus County, NC	196,716	Denison city, TX	23,342
Cambridge city, MA	110,893	Denton city, TX	131,097
Canandaigua city, NY	10,402	Denver city, CO	678,467
Cannon Beach city, OR	1,517	Des Moines city, IA	214,778
Cañon City city, CO	16,298	Des Peres city, MO	8,536
Canton city, SD	3,352	Destin city, FL	13,421
Cape Coral city, FL	173,679	Dover city, NH	30,901
Carlsbad city, CA	113,147	Dublin city, CA	57,022
Carroll city, IA	9,937	Dublin city, OH	44,442
Cartersville city, GA	20,235	Duluth city, MN	86,066
Cary town, NC	159,715	Durham city, NC	257,232
Castle Rock town, CO	57,274	Durham County, NC	300,865
Cedar Hill city, TX	48,149	Dyer town, IN	16,077
Cedar Park city, TX	70,010	Eagan city, MN	66,102
Cedar Rapids city, IA	130,330	Eagle Mountain city, UT	27,773
Celina city, TX	7,910	Eau Claire city, WI	67,945
Centennial city, CO	108,448	Eden Prairie city, MN	63,660
Chandler city, AZ	245,160	Eden town, VT	1,254
Chandler city, TX	2,896	Edgewater city, CO	5,299
Chanhassen city, MN	25,108	Edina city, MN	50,603
Chapel Hill town, NC	59,234	Edmond city, OK	89,769
Chardon city, OH	5,166	Edmonds city, WA	41,309
Charles County, MD	156,021	El Cerrito city, CA	24,982
Charlotte County, FL	173,236	El Paso de Robles (Paso Robles) city, CA	31,409
Charlottesville city, VA	46,487	Elk Grove city, CA	166,228
Chattanooga city, TN	176,291	Elmhurst city, IL	46,139
Chautauqua town, NY	4,362	Englewood city, CO	33,155
Chesterfield County, VA	335,594	Erie town, CO	22,019
Clackamas County, OR	399,962	Estes Park town, CO	6,248
Clayton city, MO	16,214	Euclid city, OH	47,698
Clearwater city, FL	112,794	Fairview town, TX	8,473
Cleveland Heights city, OH	45,024	Farmers Branch city, TX	33,808
Clinton city, SC	8,538	Farmersville city, TX	3,440
Clive city, IA	17,134	Farmington Hills city, MI	81,235
Clovis city, CA	104,411	Farmington town, CT	25,596
College Park city, MD	32,186	Fate city, TX	10,339
College Station city, TX	107,445	Fayetteville city, GA	17,069
Colleyville city, TX	25,557	Fayetteville city, NC	210,324
Collinsville city, IL	24,767	Ferguson township, PA	18,837
Columbia city, MO	118,620	Fernandina Beach city, FL	11,957
Columbia city, SC	132,236	Flower Mound town, TX	71,575
Columbia Falls city, MT	5,054	Forest Grove city, OR	23,554
Commerce City city, CO	52,905	Fort Collins city, CO	159,150
Concord city, CA	128,160	Franklin city, TN	72,990
Concord town, MA	19,357	Frederick town, CO	11,397
Conshohocken borough, PA	7,985	Fremont city, CA	230,964
Coolidge city, AZ	12,221	Fruita city, CO	13,039
Coon Rapids city, MN	62,342	Gahanna city, OH	34,691
Coral Springs city, FL	130,110	Gaithersburg city, MD	67,417
Coronado city, CA	24,053	Galveston city, TX	49,706
Corvallis city, OR	56,224	Gardner city, KS	21,059
Cottonwood Heights city, UT	34,214	Germantown city, TN	39,230
Coventry Lake CDP, CT	2,932	Gilbert town, AZ	232,176
Creve Coeur city, MO	18,259	Gillette city, WY	31,783
Cupertino city, CA	60,687	Glen Ellyn village, IL	27,983
Dacono city, CO	4,929	Glendora city, CA	51,891
Dakota County, MN	414,655	Glenview village, IL	47,066
Dallas city, OR	15,413	Golden city, CO	20,365
Dallas city, TX	1,300,122	Golden Valley city, MN	21,208
Danville city, KY	16,657	Goodyear city, AZ	74,953
Darien city, IL	22,206	Grafton village, WI	11,576
Davenport city, FL	3,665	Grand Blanc city, MI	7,964
Davidson town, NC	12,325	Grand Rapids city, MI	195,355
Dayton city, OH	140,939	Grants Pass city, OR	36,687
Dayton town, WY	815	Grass Valley city, CA	12,893

The National Community Survey™

Greeley city, CO.....	100,760	Lawrence city, KS.....	93,954
Greenville city, NC.....	90,347	Lawrenceville city, GA	29,287
Greenwich town, CT.....	62,782	Lehi city, UT	58,351
Greenwood Village city, CO.....	15,397	Lenexa city, KS	52,030
Greer city, SC	28,587	Lewisville city, TX.....	103,638
Gunnison County, CO	16,215	Lewisville town, NC	13,516
Haltom City city, TX	44,059	Libertyville village, IL.....	20,504
Hamilton city, OH.....	62,216	Lincolnwood village, IL	12,637
Hamilton town, MA	7,991	Lindsborg city, KS	3,313
Hampton city, VA	136,255	Little Chute village, WI	11,006
Hanover County, VA	103,218	Littleton city, CO	45,848
Harrisburg city, SD	5,429	Livermore city, CA.....	88,232
Harrisonburg city, VA	53,064	Lombard village, IL	43,776
Harrisonville city, MO	10,025	Lone Tree city, CO	13,430
Hastings city, MN	22,620	Long Grove village, IL	7,980
Henderson city, NV	284,817	Longmont city, CO	91,730
Herndon town, VA.....	24,545	Lonsdale city, MN.....	3,850
High Point city, NC.....	109,849	Los Alamos County, NM.....	18,031
Highland Park city, IL	29,796	Los Altos Hills town, CA	8,490
Highlands Ranch CDP, CO	105,264	Loudoun County, VA	374,558
Homer Glen village, IL.....	24,403	Louisville city, CO.....	20,319
Honolulu County, HI	990,060	Lower Merion township, PA	58,500
Hoquiam city, WA	8,416	Lynchburg city, VA	79,237
Horry County, SC	310,186	Lynnwood city, WA	37,242
Hudson town, CO.....	1,709	Manassas city, VA	41,379
Huntley village, IL	26,265	Manhattan Beach city, CA	35,698
Huntsville city, TX	40,727	Manhattan city, KS	55,427
Hutchinson city, MN	13,836	Mankato city, MN	41,241
Hutto city, TX	22,644	Maple Grove city, MN	68,362
Independence city, MO.....	117,369	Maplewood city, MN.....	40,127
Indio city, CA	86,867	Maricopa County, AZ	4,155,501
Iowa City city, IA	73,415	Marin County, CA	260,814
Irving city, TX	235,648	Marion city, IA	38,014
Issaquah city, WA	35,629	Mariposa County, CA	17,658
Jackson city, MO	14,690	Marshfield city, WI	18,326
Jackson County, MI	158,989	Martinez city, CA	37,902
James City County, VA	73,028	Marysville city, WA	66,178
Jefferson County, NY.....	116,567	Maui County, HI.....	164,094
Jefferson Parish, LA	437,038	McKinney city, TX.....	164,760
Jerome city, ID	11,306	McMinnville city, OR	33,211
Johnson City city, TN.....	65,598	Mecklenburg County, NC	1,034,290
Johnston city, IA	20,172	Menlo Park city, CA	33,661
Jupiter town, FL.....	62,373	Menomonee Falls village, WI	36,411
Kalamazoo city, MI.....	75,833	Mercer Island city, WA	24,768
Kansas City city, KS.....	151,042	Meridian charter township, MI	41,903
Kansas City city, MO.....	476,974	Meridian city, ID	91,917
Keizer city, OR	37,910	Merriam city, KS.....	11,259
Kent city, WA	126,561	Mesa city, AZ	479,317
Kerrville city, TX.....	22,931	Miami Beach city, FL	92,187
Key West city, FL	25,316	Miami city, FL	443,007
King City city, CA	13,721	Middleton city, WI	18,951
Kingman city, AZ	28,855	Middletown town, RI	16,100
Kirkland city, WA	86,772	Midland city, MI	41,958
Kirkwood city, MO	27,659	Milford city, DE	10,645
Knoxville city, IA	7,202	Milton city, GA	37,556
La Plata town, MD.....	9,160	Minneapolis city, MN	411,452
La Vista city, NE.....	17,062	Minnetrista city, MN	7,187
Laguna Niguel city, CA	65,429	Missouri City city, TX	72,688
Lake Forest city, IL	18,931	Moline city, IL	42,644
Lake in the Hills village, IL.....	28,908	Monroe city, MI.....	20,128
Lake Zurich village, IL	19,983	Montgomery city, MN	2,921
Lakeville city, MN	61,056	Montgomery County, MD.....	1,039,198
Lakewood city, CO	151,411	Monticello city, UT	2,599
Lakewood city, WA	59,102	Montrose city, CO	18,918
Lancaster County, SC	86,544	Moraga town, CA	17,231
Lansing city, MI	115,222	Morristown city, TN.....	29,446
Laramie city, WY.....	32,104	Morrisville town, NC	23,873
Larimer County, CO.....	330,976	Morro Bay city, CA	10,568
Las Cruces city, NM.....	101,014	Mountlake Terrace city, WA	20,922
Las Vegas city, NM.....	13,445	Murphy city, TX	20,361

The National Community Survey™

Naperville city, IL	146,431	Prince William County, VA.....	450,763
Napoleon city, OH.....	8,646	Prior Lake city, MN.....	25,452
Nederland city, TX	17,284	Pueblo city, CO	109,122
Needham CDP, MA.....	30,429	Purcellville town, VA.....	9,217
Nevada City city, CA.....	3,112	Queen Creek town, AZ	33,298
Nevada County, CA.....	98,838	Raleigh city, NC	449,477
New Braunfels city, TX.....	70,317	Ramsey city, MN.....	25,853
New Brighton city, MN.....	22,440	Raymond town, ME.....	4,497
New Concord village, OH.....	2,561	Raymore city, MO	20,358
New Hope city, MN	20,909	Redmond city, OR.....	28,492
New Orleans city, LA.....	388,182	Redmond city, WA	60,712
New Ulm city, MN	13,249	Redwood City city, CA	84,368
Newport city, RI.....	24,745	Reno city, NV.....	239,732
Newport News city, VA.....	180,775	Richland city, WA.....	53,991
Newton city, IA.....	15,085	Richmond city, CA.....	108,853
Niles village, IL	29,823	Richmond Heights city, MO.....	8,466
Noblesville city, IN	59,807	Rio Rancho city, NM.....	93,317
Norcross city, GA	16,474	River Falls city, WI	15,256
Norfolk city, NE.....	24,352	Riverside city, CA	321,570
Norfolk city, VA.....	245,752	Roanoke city, VA.....	99,572
North Mankato city, MN.....	13,583	Roanoke County, VA	93,419
North Port city, FL.....	62,542	Rochester city, NY.....	209,463
North Yarmouth town, ME.....	3,714	Rock Hill city, SC.....	70,764
Northglenn city, CO.....	38,473	Rockville city, MD.....	66,420
Novato city, CA.....	55,378	Roeland Park city, KS	6,810
Novi city, MI	58,835	Rohnert Park city, CA	42,305
O'Fallon city, IL.....	29,095	Rolla city, MO	20,013
Oak Park village, IL	52,229	Rosemount city, MN.....	23,474
Oakley city, CA	39,950	Rosenberg city, TX.....	35,867
Oklahoma City city, OK.....	629,191	Roseville city, MN.....	35,624
Olmsted County, MN	151,685	Round Rock city, TX.....	116,369
Olympia city, WA	49,928	Royal Palm Beach village, FL.....	37,665
Orange village, OH.....	3,280	Sacramento city, CA	489,650
Orland Park village, IL.....	59,161	Sahuarita town, AZ	28,257
Orleans Parish, LA.....	388,182	Sammamish city, WA	62,877
Oshkosh city, WI.....	66,649	San Diego city, CA	1,390,966
Oswego village, IL.....	33,759	San Jose city, CA	1,023,031
Ottawa County, MI.....	280,243	San Marcos city, CA	93,493
Overland Park city, KS.....	186,147	San Marcos city, TX.....	59,935
Paducah city, KY	24,879	Sangamon County, IL.....	198,134
Palm Beach Gardens city, FL.....	53,119	Santa Fe city, NM.....	82,980
Palm Coast city, FL.....	82,356	Santa Fe County, NM	147,514
Palo Alto city, CA	67,082	Sarasota County, FL.....	404,839
Palos Verdes Estates city, CA.....	13,591	Savage city, MN.....	30,011
Papillion city, NE	19,478	Schaumburg village, IL.....	74,427
Paradise Valley town, AZ	13,961	Schertz city, TX.....	38,199
Park City city, UT	8,167	Scott County, MN.....	141,463
Parker town, CO	51,125	Scottsdale city, AZ	239,283
Parkland city, FL	28,901	Sedona city, AZ.....	10,246
Pasco city, WA.....	70,607	Sevierville city, TN	16,387
Pasco County, FL	498,136	Shakopee city, MN.....	40,024
Payette city, ID.....	7,366	Sharonville city, OH.....	13,974
Pearland city, TX.....	113,693	Shawnee city, KS	64,840
Peoria city, IL	115,424	Shawnee city, OK.....	30,974
Pflugerville city, TX	58,013	Sherborn town, MA	4,302
Pinehurst village, NC	15,580	Shoreline city, WA	55,431
Piqua city, OH.....	20,793	Shoreview city, MN.....	26,432
Pitkin County, CO.....	17,747	Shorewood village, IL.....	16,809
Plano city, TX	281,566	Sierra Vista city, AZ.....	43,585
Platte City city, MO.....	4,867	Silverton city, OR	9,757
Pleasant Hill city, IA	9,608	Sioux Falls city, SD.....	170,401
Pleasanton city, CA	79,341	Skokie village, IL.....	64,773
Plymouth city, MN.....	76,258	Snoqualmie city, WA	12,944
Polk County, IA.....	467,235	Snowmass Village town, CO.....	2,827
Pompano Beach city, FL	107,542	Somerset town, MA.....	18,257
Port Orange city, FL	60,315	South Jordan city, UT	65,523
Port St. Lucie city, FL	178,778	Southlake city, TX	30,090
Portland city, OR.....	630,331	Spearfish city, SD.....	11,300
Powell city, OH	12,658	Springfield city, MO.....	165,785
Powhatan County, VA.....	28,364	Springville city, UT	32,319

The National Community Survey™

St. Augustine city, FL	13,952	Vienna town, VA	16,474
St. Charles city, IL	32,730	Virginia Beach city, VA	450,057
St. Joseph city, MO	76,819	Walnut Creek city, CA	68,516
St. Louis County, MN	200,294	Warrensburg city, MO	19,890
St. Lucie County, FL	298,763	Washington County, MN	250,979
State College borough, PA	42,224	Washoe County, NV	445,551
Steamboat Springs city, CO	12,520	Washougal city, WA	15,241
Sugar Land city, TX	86,886	Wauwatosa city, WI	47,687
Suisun City city, CA	29,280	Wentzville city, MO	35,768
Summit County, UT	39,731	West Carrollton city, OH	12,963
Sunnyvale city, CA	151,565	West Chester township, OH	62,804
Surprise city, AZ	129,534	Western Springs village, IL	13,187
Suwanee city, GA	18,655	Westerville city, OH	38,604
Tacoma city, WA	207,280	Westlake town, TX	1,006
Takoma Park city, MD	17,643	Westminster city, CO	111,895
Temecula city, CA	110,722	Westminster city, MD	18,557
Tempe city, AZ	178,339	Wheat Ridge city, CO	31,162
Temple city, TX	71,795	White House city, TN	11,107
Texarkana city, TX	37,222	Wichita city, KS	389,054
The Woodlands CDP, TX	109,608	Williamsburg city, VA	14,817
Tigard city, OR	51,355	Willowbrook village, IL	8,598
Tinley Park village, IL	57,107	Wilmington city, NC	115,261
Tracy city, CA	87,613	Wilsonville city, OR	22,789
Trinidad CCD, CO	10,819	Windsor town, CO	23,386
Tualatin city, OR	27,135	Windsor town, CT	29,037
Tulsa city, OK	401,352	Winnetka village, IL	12,504
Tustin city, CA	80,007	Winter Garden city, FL	40,799
Twin Falls city, ID	47,340	Woodbury city, MN	67,648
Unalaska city, AK	4,809	Woodinville city, WA	11,675
University Heights city, OH	13,201	Wyandotte County, KS	163,227
University Park city, TX	24,692	Yakima city, WA	93,182
Urbandale city, IA	42,222	York County, VA	67,196
Vail town, CO	5,425	Yorktown town, IN	11,200
Ventura CCD, CA	115,218	Yorkville city, IL	18,691
Vernon Hills village, IL	26,084	Yountville city, CA	2,978
Vestavia Hills city, AL	34,003		
Victoria city, MN	8,679		

Appendix C: Detailed Survey Methods

The National Community Survey™ (The NCS™), conducted by National Research Center, Inc., was developed to provide communities an accurate, affordable and easy way to assess and interpret resident opinion about important local topics. Standardization of common questions and survey methods provide the rigor to assure valid results, and each community has enough flexibility to construct a customized version of The NCS.

Results offer insight into residents' perspectives about the community as a whole, including local amenities, services, public trust, resident participation and other aspects of the community in order to support budgeting, land use and strategic planning and communication with residents. Resident demographic characteristics permit comparison to the Census as well as comparison of results for different subgroups of residents. The County of Allegan County funded this research. Please contact Allegan County Executive Director of Services Dan Wedge at DWedge@allegancounty.org if you have any questions about the survey.

Survey Validity

The question of survey validity has two parts: 1) how can a community be confident that the results from those who completed the questionnaire are representative of the results that would have been obtained had the survey been administered to the entire population? and 2) how closely do the perspectives recorded on the survey reflect what residents really believe or do?

To answer the first question, the best survey research practices were used for the resources spent to ensure that the results from the survey respondents reflect the opinions of residents in the entire community. These practices include:

- Using a mail-out/mail-back methodology, which typically gets a higher response rate than phone for the same dollars spent. A higher response rate lessens the worry that those who did not respond are different than those who did respond.
- Selecting households at random within the community to receive the survey to ensure that the households selected to receive the survey are representative of the larger community.
- Over-sampling multi-family housing units to improve response from hard-to-reach, lower income or younger apartment dwellers.
- Selecting the respondent within the household using an unbiased sampling procedure; in this case, the "birthday method." The cover letter included an instruction requesting that the respondent in the household be the adult (18 years old or older) who most recently had a birthday, irrespective of year of birth.
- Contacting potential respondents three times to encourage response from people who may have different opinions or habits than those who would respond with only a single prompt.
- Inviting response in a compelling manner (using appropriate letterhead/logos and a signature of a visible leader) to appeal to recipients' sense of civic responsibility.
- Providing a pre-addressed, postage-paid return envelope.
- Offering the survey in Spanish or other language when requested by a given community.
- Weighting the results to reflect the demographics of the population.

The answer to the second question about how closely the perspectives recorded on the survey reflect what residents really believe or do is more complex. Resident responses to surveys are influenced by a variety of factors. For questions about service quality, residents' expectations for service quality play a role as well as the "objective" quality of the service provided, the way the resident perceives the entire community (that is, the context in which the service is provided), the scale on which the resident is asked to record his or her opinion and, of course, the opinion, itself, that a resident holds about the service. Similarly a resident's report of certain behaviors is colored by what he or she believes is the socially desirable response (e.g., reporting tolerant behaviors toward "oppressed groups," likelihood of voting for a tax increase for services to poor people, use of alternative modes of travel to work besides the single occupancy vehicle), his or her memory of the actual behavior (if it is not a question speculating about future actions, like a vote), his or her confidence that he or she can be honest without suffering any negative consequences (thus the need for anonymity) as well as the actual behavior itself.

How closely survey results come to recording the way a person really feels or behaves often is measured by the coincidence of reported behavior with observed current behavior (e.g., driving habits), reported intentions to behave with observed future behavior (e.g., voting choices) or reported opinions about current community quality

with objective characteristics of the community (e.g., feelings of safety correlated with rates of crime). There is a body of scientific literature that has investigated the relationship between reported behaviors and actual behaviors. Well-conducted surveys, by and large, do capture true respondent behaviors or intentions to act with great accuracy. Predictions of voting outcomes tend to be quite accurate using survey research, as do reported behaviors that are not about highly sensitive issues (e.g., family abuse or other illegal or morally sanctioned activities). For self-reports about highly sensitive issues, statistical adjustments can be made to correct for the respondents' tendency to report what they think the "correct" response should be.

Research on the correlation of resident opinion about service quality and "objective" ratings of service quality vary, with some showing stronger relationships than others. NRC's own research has demonstrated that residents who report the lowest ratings of street repair live in communities with objectively worse street conditions than those who report high ratings of street repair (based on road quality, delay in street repair, number of road repair employees). Similarly, the lowest rated fire services appear to be "objectively" worse than the highest rated fire services (expenditures per capita, response time, "professional" status of firefighters, breadth of services and training provided). Resident opinion commonly reflects objective performance data but is an important measure on its own. NRC principals have written, "If you collect trash three times a day but residents think that your trash haul is lousy, you still have a problem."

Selecting Survey Recipients

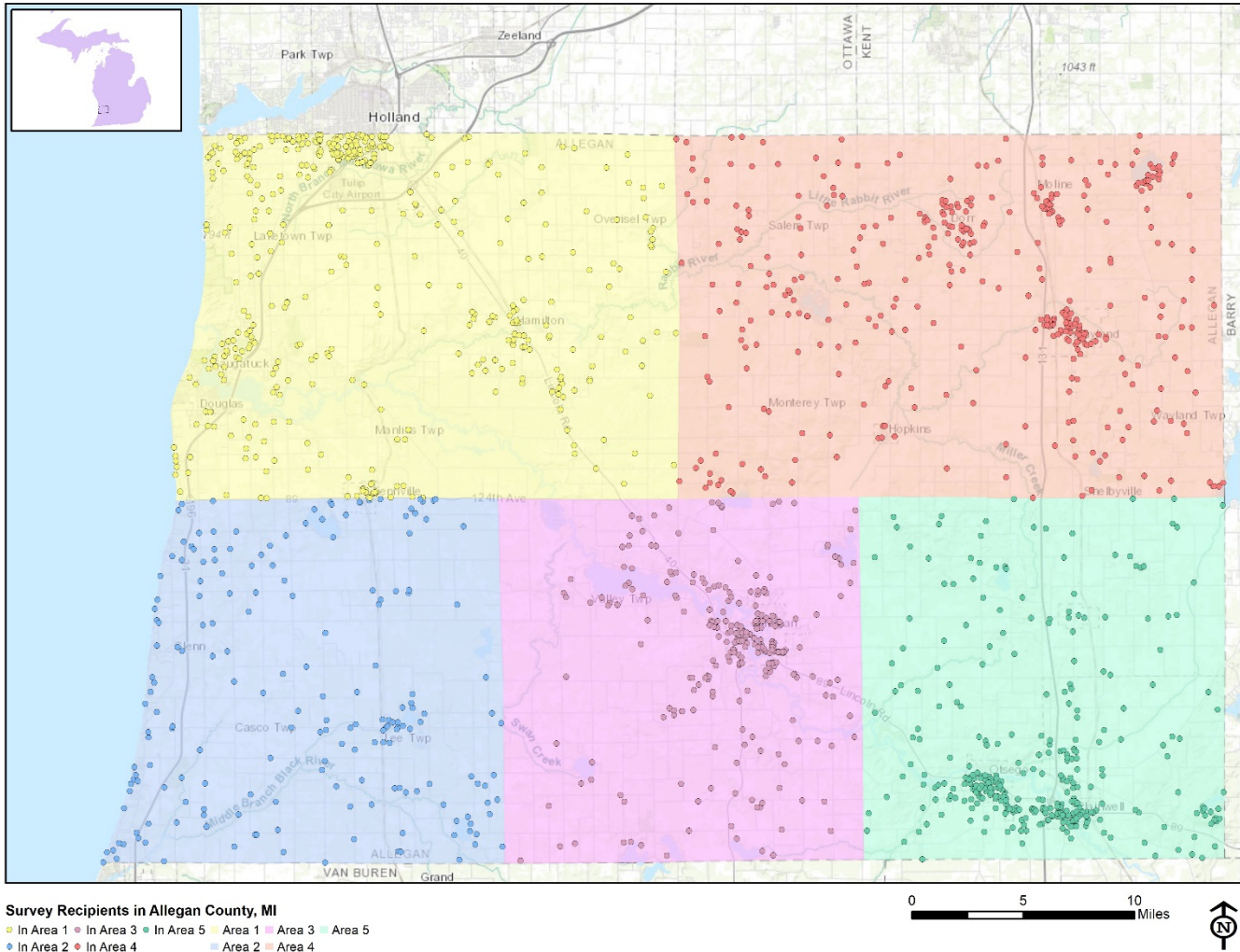
"Sampling" refers to the method by which households were chosen to receive the survey. All households within Allegan County were eligible to participate in the survey. A list of all households within the zip codes serving Allegan County was purchased from Go-Dog Direct based on updated listings from the United States Postal Service. Since some of the zip codes that serve County households may also serve addresses that lie outside of the community, the exact geographic location of each housing unit was compared to community boundaries using the most current municipal boundary file (updated on a quarterly basis) and addresses located outside of Allegan County boundaries were removed from consideration. Each address identified as being within County boundaries was further identified as being within one of the five geographic subareas.

To choose the 1,700 survey recipients, a systematic sampling method was applied to the list of households previously screened for geographic location. Systematic sampling is a procedure whereby a complete list of all possible households is culled, selecting every *N*th one, giving each eligible household a known probability of selection, until the appropriate number of households is selected. Multi-family housing units were selected at a higher rate as residents of this type of housing typically respond at lower rates to surveys than do those in single-family housing units. Figure 1 displays a map of the households selected to receive the survey. In general, because of the random sampling techniques used, the displayed sampling density will closely mirror the overall housing unit density (which may be different from the population density). While the theory of probability assumes no bias in selection, there may be some minor variations in practice (meaning, an area with only 15% of the housing units might be selected at an actual rate that is slightly above or below that).

An individual within each household was selected using the birthday method. The birthday method selects a person within the household by asking the "person whose birthday has most recently passed" to complete the questionnaire. The underlying assumption in this method is that day of birth has no relationship to the way people respond to surveys. This instruction was contained in the cover letter accompanying the questionnaire.

In addition to the scientific, random selection of households, a link to an online "opt-in" survey was publicized and posted to the Allegan County website. This opt-in survey was identical to the scientific survey and open to all County residents. (The data presented in this report exclude the opt-in survey data. These data can be found in the *Supplemental Online Survey Results* provided under separate cover.)

Figure 1: Location of Survey Recipients



Survey Administration and Response

Selected households received three mailings, one week apart, beginning on November 20, 2019. The first mailing was a prenotification postcard announcing the upcoming survey. The next mailing contained a letter from the Board Chairperson inviting the household to participate, a questionnaire and a postage-paid return envelope. The final mailing contained a reminder letter, another survey and a postage-paid return envelope. The second cover letter asked those who had not completed the survey to do so and those who had already done so to refrain from turning in another survey. The survey was available in English. Both cover letters included a URL through which the residents selected for the mail survey could choose to respond online rather than by mail. Allegan County chose to augment their administration of The NCS with several additional services, including demographic and geographic subgroup comparisons. The results of these additional services have been provided under separate cover. Completed surveys were collected over the following seven weeks. The online “opt-in” survey became available to all residents on December 20, 2019 and remained open for three weeks.

About 5% of the 1,700 surveys mailed were returned because the housing unit was vacant or the postal service was unable to deliver the survey as addressed. Of the remaining 1,619 households that received the survey, 293 completed the survey, providing an overall response rate of 18%. Of the 293 completed surveys, 24 were completed online. Additionally, responses were tracked by geographic subarea; response rates by area ranged from 11% to 21%. The response rates were calculated using AAPOR’s response rate #2¹ for mailed surveys of unnamed persons. Additionally, 532 residents completed the online opt-in survey; results of the opt-in survey can be found in the *Supplemental Online Survey Results* report provided under separate cover.

¹ See AAPOR’s Standard Definitions here: [http://www.aapor.org/Standards-Ethics/Standard-Definitions-\(1\).aspx](http://www.aapor.org/Standards-Ethics/Standard-Definitions-(1).aspx) for more information

Table 79: Survey Response Rates by Area

	Area 1	Area2	Area 3	Area 4	Area 5	Overall
Total sample used	463	188	277	408	364	1,700
I=Complete Interviews	83	20	55	63	71	292
P=Partial Interviews	0	0	1	0	0	1
R=Refusal and break off	0	0	0	0	0	0
NC=Non Contact	0	0	0	0	0	0
O=Other	0	0	0	0	0	0
UH=Unknown household	0	0	0	0	0	0
UO=Unknown other	360	157	212	320	277	1,326
NE=Not eligible	20	11	9	25	16	81
Response rate: (I+P)/(I+P) + (R+NC+O) + (UH+UO)	19%	11%	21%	16%	20%	18%

Confidence Intervals

It is customary to describe the precision of estimates made from surveys by a “level of confidence” and accompanying “confidence interval” (or margin of error). A traditional level of confidence, and the one used here, is 95%. The 95% confidence interval can be any size and quantifies the sampling error or imprecision of the survey results because some residents’ opinions are relied on to estimate all residents’ opinions.²

The margin of error for the Allegan County survey is no greater than plus or minus six percentage points around any given percent reported for all respondents (293 completed surveys).

For subgroups of responses, the margin of error increases because the number of respondents for the subgroup is smaller.

Survey Processing (Data Entry)

Upon receipt, completed surveys were assigned a unique identification number. Additionally, each survey was reviewed and “cleaned” as necessary. For example, a question may have asked a respondent to pick two items out of a list of five, but the respondent checked three; in this case, NRC would use protocols to randomly choose two of the three selected items for inclusion in the dataset.

All surveys then were entered twice into an electronic dataset; any discrepancies were resolved in comparison to the original survey form. Range checks as well as other forms of quality control were also performed.

NRC used SurveyGizmo, a web-based survey and analytics platform, to collect the online survey data. Use of an online system means all collected data are entered into the dataset when the respondents submit the surveys. Skip patterns are programmed into the system so respondents are automatically “skipped” to the appropriate question based on the individual responses being given. Online programming also allows for more rigid control of the data format, making extensive data cleaning unnecessary.

A series of quality control checks were also performed in order to ensure the integrity of the web data. Steps may include and not be limited to reviewing the data for clusters of repeat IP addresses and time stamps (indicating duplicate responses) and removing empty submissions (questionnaires submitted with no questions answered).

Survey Data Weighting

Upon completion of data collection for both the scientific (probability) and nonscientific open participation online opt-in (non-probability) surveys, the demographics of each dataset were separately compared to those found in the 2010 Census and 2017 American Community Survey estimates for adults in Allegan County. The primary objective of weighting survey data is to make the survey respondents reflective of the larger population of the

² A 95% confidence interval indicates that for every 100 random samples of this many residents, 95 of the confidence intervals created will include the “true” population response. This theory is applied in practice to mean that the “true” perspective of the target population lies within the confidence interval created for a single survey. For example, if 75% of residents rate a service as “excellent” or “good,” then the 4% margin of error (for the 95% confidence interval) indicates that the range of likely responses for the entire community is between 71% and 79%. This source of uncertainty is called sampling error. In addition to sampling error, other sources of error may affect any survey, including the non-response of residents with opinions different from survey responders. Though standardized on The NCS, on other surveys, differences in question wording, order, translation and data entry, as examples, can lead to somewhat varying results.

community. Both survey datasets were weighted independently to best match the Census. The characteristics used for weighting were housing tenure (rent or own), housing unit type (attached or detached), sex and age, and area. No adjustments were made for design effects. Results for the opt-in survey have been provided under separate cover.

The results of the weighting scheme for the scientific (probability) survey are presented in the following table.

Table 80: Allegan County, MI 2019 Weighting Table

Characteristic	Population Norm	Unweighted Data	Weighted Data
Housing			
Rent home	18%	8%	16%
Own home	82%	92%	84%
Detached unit*	88%	89%	88%
Attached unit*	12%	11%	12%
Race and Ethnicity			
White	95%	96%	93%
Not white	5%	4%	7%
Not Hispanic	94%	98%	98%
Hispanic	6%	2%	2%
Sex and Age			
Female	51%	50%	49%
Male	49%	50%	51%
18-34 years of age	26%	7%	22%
35-54 years of age	35%	25%	35%
55+ years of age	39%	68%	42%
Females 18-34	13%	4%	11%
Females 35-54	17%	14%	18%
Females 55+	20%	31%	21%
Males 18-34	13%	2%	12%
Males 35-54	18%	11%	19%
Males 55+	19%	37%	21%
Area			
Area 1	28%	28%	29%
Area 2	11%	7%	8%
Area 3	16%	19%	16%
Area 4	25%	22%	25%
Area 5	21%	24%	21%

* U.S. Census Bureau ACS 2017 5-year estimates

Survey Data Analysis and Reporting

The survey dataset was analyzed using the Statistical Package for the Social Sciences (SPSS). For the most part, the percentages presented in the reports represent the “percent positive.” The percent positive is the combination of the top two most positive response options (i.e., “excellent” and “good,” “very safe” and “somewhat safe,” “essential” and “very important,” etc.), or, in the case of resident behaviors/participation, the percent positive represents the proportion of respondents indicating “yes” or participating in an activity at least once a month.

On many of the questions in the survey respondents may answer “don’t know.” The proportion of respondents giving this reply is shown in the full set of responses included in Appendix A. However, these responses have been removed from the analyses presented in the reports. In other words, the tables and graphs display the responses from respondents who had an opinion about a specific item. When a table for a question that only permitted a single response does not total to exactly 100%, it is due to the common practice of percentages being rounded to the nearest whole number.

The data for the opt-in survey are presented separately in the report titled *Supplemental Online Survey Results*.

Appendix D: Survey Materials

Dear Allegan County Resident,

It won't take much of your time to make a big difference!

Your household has been randomly selected to participate in a survey about your community. Your survey will arrive in a few days.

Thank you for helping create a better County!

Sincerely,



Jim Storey, Board Chairman
Allegan County Board of Commissioners

Dear Allegan County Resident,

It won't take much of your time to make a big difference!

Your household has been randomly selected to participate in a survey about your community. Your survey will arrive in a few days.

Thank you for helping create a better County!

Sincerely,



Jim Storey, Board Chairman
Allegan County Board of Commissioners

Dear Allegan County Resident,

It won't take much of your time to make a big difference!

Your household has been randomly selected to participate in a survey about your community. Your survey will arrive in a few days.

Thank you for helping create a better County!

Sincerely,



Jim Storey, Board Chairman
Allegan County Board of Commissioners

Dear Allegan County Resident,

It won't take much of your time to make a big difference!

Your household has been randomly selected to participate in a survey about your community. Your survey will arrive in a few days.

Thank you for helping create a better County!

Sincerely,



Jim Storey, Board Chairman
Allegan County Board of Commissioners



County Services Building
3283 – 122nd Avenue
Allegan, MI 49010

Presorted
First Class Mail
US Postage
PAID
Boulder, CO
Permit NO. 94



County Services Building
3283 – 122nd Avenue
Allegan, MI 49010

Presorted
First Class Mail
US Postage
PAID
Boulder, CO
Permit NO. 94



County Services Building
3283 – 122nd Avenue
Allegan, MI 49010

Presorted
First Class Mail
US Postage
PAID
Boulder, CO
Permit NO. 94



County Services Building
3283 – 122nd Avenue
Allegan, MI 49010

Presorted
First Class Mail
US Postage
PAID
Boulder, CO
Permit NO. 94



County Services Building
3283 – 122nd Avenue
Allegan, MI 49010

Presorted
First Class Mail
US Postage
PAID
Boulder, CO
Permit NO.94

Allegan County Board of Commissioners

Jim Storey, Chairperson

Dean Kapenga, District #1
Jim Storey, District #2
Max R. Thiele, District #3
Mark DeYoung, District #4



Gale Dugan, Vice Chairperson

Tom Jessup, District #5
Gale Dugan, District #6
Rick Cain, District #7

November 2019

Dear Allegan County Resident:

Allegan County wants to know what you think. Working with county non-profit, service organizations, the enclosed survey that you have been randomly selected to receive, is designed to provide that opportunity. The purpose in asking of your time and thoughts is to find out which future services the county and the non-profits should undertake.

In the classic children's tale, Alice in Wonderland, Alice's travels bring her to a fork in the road where she talks with the famous Cheshire cat.

"Would you tell me, please, which way I ought to go from here?"

"That depends a good deal on where you want to get to," said the Cat.

"I don't much care where—" said Alice.

"Then it doesn't matter which way you go," said the Cat

As we prepare to enter the third decade of the 21st Century, which way should Allegan County go? The questions on this survey are aimed at helping county government and the non-profits know the direction you and fellow residents are interested in pursuing.

A few things to remember:

- **Your responses are completely anonymous.**
- In order to hear from a diverse group of residents, the adult 18 years or older in your household who most recently had a birthday should complete this survey.
- **You may return the survey by mail in the enclosed postage-paid envelope, or you can complete the survey online at:**

<http://bit.ly/xxplaceholder>

Please do not share your survey link. This survey is for randomly selected households only. The County will conduct a separate survey that is open to all residents just a few weeks from now. Thank you for your time and participation! If you have any questions about the survey, please call 269-686-5150.

Sincerely,


Jim Storey, Board Chairperson

Allegan County Board of Commissioners

Jim Storey, Chairperson

Dean Kapenga, District #1
Jim Storey, District #2
Max R. Thiele, District #3
Mark DeYoung, District #4



Gale Dugan, Vice Chairperson

Tom Jessup, District #5
Gale Dugan, District #6
Rick Cain, District #7

November 2019

Dear Allegan County Resident:

Allegan County wants to know what you think. Here's a second chance if you haven't already responded to the 2019 Allegan County Community Survey. **(If you completed it and sent it back, we thank you for your time and ask you to recycle this survey. Please do not respond twice.)**

Allegan County wants to know what you think. Working with county non-profit, service organizations, the enclosed survey that you have been randomly selected to receive, is designed to provide that opportunity. The purpose in asking of your time and thoughts is to find out which future services the county and the non-profits should undertake.

In the classic children's tale, Alice in Wonderland, Alice's travels bring her to a fork in the road where she talks with the famous Cheshire cat.

"Would you tell me, please, which way I ought to go from here?"

"That depends a good deal on where you want to get to," said the Cat.

"I don't much care where—" said Alice.

"Then it doesn't matter which way you go," said the Cat

As we prepare to enter the third decade of the 21st Century, which way should Allegan County go? The questions on this survey are aimed at helping county government and the non-profits know the direction you and fellow residents are interested in pursuing.

A few things to remember:

- **Your responses are completely anonymous.**
- In order to hear from a diverse group of residents, the adult 18 years or older in your household who most recently had a birthday should complete this survey.
- **You may return the survey by mail in the enclosed postage-paid envelope, or you can complete the survey online at:**

<http://bit.ly/xxplaceholder>

Please do not share your survey link. This survey is for randomly selected households only. The County will conduct a separate survey that is open to all residents just a few weeks from now. Thank you for your time and participation! If you have any questions about the survey, please call 269-686-5150.

Sincerely,

Jim Storey,
Jim Storey, Board Chairperson

County Services Building 3283 – 122nd Avenue Allegan, MI 49010
269-673-0239 Main Office 269-686-5331 Main Fax

Allegheny County 2019 Community Survey

Please complete this questionnaire if you are the adult (age 18 or older) in the household who most recently had a birthday. The adult's year of birth does not matter. Please select the response (by circling the number or checking the box) that most closely represents your opinion for each question. Your responses are anonymous and will be reported in group form only.

1. Please rate each of the following aspects of quality of life in Allegheny County:

	<i>Excellent</i>	<i>Good</i>	<i>Fair</i>	<i>Poor</i>	<i>Don't know</i>
Allegheny County as a place to live	1	2	3	4	5
Your neighborhood as a place to live.....	1	2	3	4	5
Allegheny County as a place to raise children	1	2	3	4	5
Allegheny County as a place to work.....	1	2	3	4	5
Allegheny County as a place to visit	1	2	3	4	5
Allegheny County as a place to retire	1	2	3	4	5
The overall quality of life in Allegheny County.....	1	2	3	4	5

2. Please rate each of the following characteristics as they relate to Allegheny County as a whole:

	<i>Excellent</i>	<i>Good</i>	<i>Fair</i>	<i>Poor</i>	<i>Don't know</i>
Overall feeling of safety in Allegheny County	1	2	3	4	5
Overall ease of getting to the places you usually have to visit	1	2	3	4	5
Quality of overall natural environment in Allegheny County	1	2	3	4	5
Overall "built environment" of Allegheny County (including overall design, buildings, parks and transportation systems)	1	2	3	4	5
Health and wellness opportunities in Allegheny County	1	2	3	4	5
Overall opportunities for education and enrichment.....	1	2	3	4	5
Overall economic health of Allegheny County.....	1	2	3	4	5
Sense of community.....	1	2	3	4	5
Overall image or reputation of Allegheny County	1	2	3	4	5

3. Please indicate how likely or unlikely you are to do each of the following:

	<i>Very likely</i>	<i>Somewhat likely</i>	<i>Somewhat unlikely</i>	<i>Very unlikely</i>	<i>Don't know</i>
Recommend living in Allegheny County to someone who asks	1	2	3	4	5
Remain in Allegheny County for the next five years	1	2	3	4	5

4. Please rate how safe or unsafe you feel:

	<i>Very safe</i>	<i>Somewhat safe</i>	<i>Neither safe nor unsafe</i>	<i>Somewhat unsafe</i>	<i>Very unsafe</i>	<i>Don't know</i>
In your neighborhood during the day.....	1	2	3	4	5	6
In Allegheny County's downtown/commercial areas during the day...	1	2	3	4	5	6
In your neighborhood at night.....	1	2	3	4	5	6
In Allegheny County's downtown/commercial areas at night	1	2	3	4	5	6

5. Please rate each of the following characteristics as they relate to Allegheny County as a whole:

	<i>Excellent</i>	<i>Good</i>	<i>Fair</i>	<i>Poor</i>	<i>Don't know</i>
Traffic flow on major streets	1	2	3	4	5
Ease of public parking.....	1	2	3	4	5
Ease of travel by car in Allegheny County.....	1	2	3	4	5
Ease of travel by public transportation in Allegheny County	1	2	3	4	5
Ease of travel by bicycle in Allegheny County.....	1	2	3	4	5
Ease of walking in Allegheny County	1	2	3	4	5
Availability of paths and walking trails	1	2	3	4	5
Air quality	1	2	3	4	5
Cleanliness of Allegheny County	1	2	3	4	5
Overall appearance of Allegheny County	1	2	3	4	5
Public places where people want to spend time	1	2	3	4	5
Variety of housing options	1	2	3	4	5
Availability of affordable quality housing	1	2	3	4	5
Fitness opportunities (including exercise classes and paths or trails, etc.)	1	2	3	4	5
Recreational opportunities.....	1	2	3	4	5
Availability of affordable quality food.....	1	2	3	4	5
Availability of affordable quality health care	1	2	3	4	5
Availability of preventive health services	1	2	3	4	5
Availability of affordable quality mental health care	1	2	3	4	5

6. Please rate each of the following characteristics as they relate to Allegan County as a whole:

	<i>Excellent</i>	<i>Good</i>	<i>Fair</i>	<i>Poor</i>	<i>Don't know</i>
Availability of affordable quality child care/preschool	1	2	3	4	5
K-12 education	1	2	3	4	5
Adult educational opportunities.....	1	2	3	4	5
Opportunities to attend cultural/arts/music activities	1	2	3	4	5
Opportunities to participate in religious or spiritual events and activities	1	2	3	4	5
Employment opportunities	1	2	3	4	5
Shopping opportunities.....	1	2	3	4	5
Cost of living in Allegan County.....	1	2	3	4	5
Overall quality of business and service establishments in Allegan County	1	2	3	4	5
Vibrant downtown/commercial areas.....	1	2	3	4	5
Overall quality of new development in Allegan County.....	1	2	3	4	5
Opportunities to participate in social events and activities	1	2	3	4	5
Opportunities to volunteer.....	1	2	3	4	5
Opportunities to participate in community matters	1	2	3	4	5
Openness and acceptance of the community toward people of diverse backgrounds	1	2	3	4	5
Neighborliness of residents in Allegan County	1	2	3	4	5

7. Please indicate whether or not you have done each of the following in the last 12 months.

	<i>No</i>	<i>Yes</i>
Made efforts to conserve water	1	2
Made efforts to make your home more energy efficient	1	2
Observed a code violation or other hazard in Allegan County (weeds, abandoned buildings, etc.).....	1	2
Household member was a victim of a crime in Allegan County.....	1	2
Reported a crime to law enforcement in Allegan County	1	2
Stocked supplies in preparation for an emergency	1	2
Campaigned or advocated for an issue, cause or candidate	1	2
Contacted Allegan County (in-person, phone, email or web) for help or information	1	2
Contacted Allegan County elected officials (in-person, phone, email or web) to express your opinion.....	1	2

8. In the last 12 months, about how many times, if at all, have you or other household members done each of the following in Allegan County?

	<i>2 times a week or more</i>	<i>2-4 times a month</i>	<i>Once a month or less</i>	<i>Not at all</i>
Used Allegan County recreation centers or their services.....	1	2	3	4
Visited a neighborhood park or County park.....	1	2	3	4
Used Allegan County public libraries or their services	1	2	3	4
Participated in religious or spiritual activities in Allegan County	1	2	3	4
Attended a County-sponsored event.....	1	2	3	4
Used bus, rail, subway or other public transportation instead of driving.....	1	2	3	4
Carpooled with other adults or children instead of driving alone.....	1	2	3	4
Walked or biked instead of driving	1	2	3	4
Volunteered your time to some group/activity in Allegan County	1	2	3	4
Participated in a club	1	2	3	4
Talked to or visited with your immediate neighbors	1	2	3	4
Done a favor for a neighbor.....	1	2	3	4

9. Thinking about local public meetings (of local elected officials like City Council or County Commissioners, advisory boards, town halls, HOA, neighborhood watch, etc.), in the last 12 months, about how many times, if at all, have you or other household members attended or watched a local public meeting?

	<i>2 times a week or more</i>	<i>2-4 times a month</i>	<i>Once a month or less</i>	<i>Not at all</i>
Attended a local public meeting	1	2	3	4
Watched (online or on television) a local public meeting.....	1	2	3	4

Allegan County 2019 Community Survey

10. Please rate the quality of each of the following services provided in your community, keeping in mind that services may not be provided by Allegan County government:

	<i>Excellent</i>	<i>Good</i>	<i>Fair</i>	<i>Poor</i>	<i>Don't know</i>
Sheriff services	1	2	3	4	5
Fire services.....	1	2	3	4	5
Ambulance or emergency medical services	1	2	3	4	5
Crime prevention.....	1	2	3	4	5
Fire prevention and fire education.....	1	2	3	4	5
Traffic enforcement	1	2	3	4	5
Street repair	1	2	3	4	5
Street lighting.....	1	2	3	4	5
Snow removal	1	2	3	4	5
Traffic signal timing.....	1	2	3	4	5
Bus or transit services.....	1	2	3	4	5
Garbage collection	1	2	3	4	5
Recycling	1	2	3	4	5
Storm drainage	1	2	3	4	5
Drinking water	1	2	3	4	5
Sewer services	1	2	3	4	5
Power (electric and/or gas) utility	1	2	3	4	5
Utility billing	1	2	3	4	5
County parks.....	1	2	3	4	5
Recreation programs or classes.....	1	2	3	4	5
Recreation centers or facilities	1	2	3	4	5
Land use, planning and zoning.....	1	2	3	4	5
Code enforcement (weeds, abandoned buildings, etc.)	1	2	3	4	5
Animal control	1	2	3	4	5
Economic development	1	2	3	4	5
Health services	1	2	3	4	5
Public library services	1	2	3	4	5
Public information services	1	2	3	4	5
Cable television.....	1	2	3	4	5
Emergency preparedness (services that prepare the community for natural disasters or other emergency situations).....	1	2	3	4	5
Preservation of natural areas such as open space, farmlands and greenbelts.....	1	2	3	4	5
Allegan County open space	1	2	3	4	5
Overall customer service by Allegan County employees (Sheriff, receptionists, planners, etc.)	1	2	3	4	5
Internet/broadband services.....	1	2	3	4	5
Mental health and addiction services.....	1	2	3	4	5
Allegan County Public Health (e.g. well/septic permits, immunizations)	1	2	3	4	5
Supportive services for seniors	1	2	3	4	5
Recreational programs for youth (under age 18)	1	2	3	4	5
Recreational programs for adults (ages 18-59).....	1	2	3	4	5
Recreational programs for older adults (ages 60 and older).....	1	2	3	4	5

11. Based on your understanding of the services provided by each of the following entities, how would you rate the quality of the services provided by:

	<i>Excellent</i>	<i>Good</i>	<i>Fair</i>	<i>Poor</i>	<i>Don't know</i>
Your local government (City or Township)	1	2	3	4	5
Allegan County.....	1	2	3	4	5
The Federal Government	1	2	3	4	5

12. Please rate the following categories of Allegan County government performance:

	<i>Excellent</i>	<i>Good</i>	<i>Fair</i>	<i>Poor</i>	<i>Don't know</i>
The value of services for the taxes paid to Allegan County	1	2	3	4	5
The overall direction that Allegan County is taking	1	2	3	4	5
The job Allegan County government does at welcoming resident involvement	1	2	3	4	5
Overall confidence in Allegan County government	1	2	3	4	5
Generally acting in the best interest of the community	1	2	3	4	5
Being honest.....	1	2	3	4	5
Treating all residents fairly	1	2	3	4	5

13. Please rate how important, if at all, you think it is for the Allegan County community to focus on each of the following in the coming two years:

	<i>Essential</i>	<i>Very important</i>	<i>Somewhat important</i>	<i>Not at all important</i>
Overall feeling of safety in Allegan County	1	2	3	4
Overall ease of getting to the places you usually have to visit.....	1	2	3	4
Quality of overall natural environment in Allegan County	1	2	3	4
Overall “built environment” of Allegan County (including overall design, buildings, parks and transportation systems)	1	2	3	4
Health and wellness opportunities in Allegan County	1	2	3	4
Overall opportunities for education and enrichment.....	1	2	3	4
Overall economic health of Allegan County.....	1	2	3	4
Sense of community.....	1	2	3	4

14. In 1965, Allegan County voters established a tax limitation of 5.7 mills for County services. Due to State tax formulas, in 2019 the limitation has been reduced to 4.54 mills. Please indicate whether you would support or oppose restoring the tax limitation to 5.7 mills if the County were to use the additional funds to maintain or expand public services and reduce public debt? (The additional yearly cost to taxpayers would be up to \$57.97 for a home with market value of \$100,000).

- Strongly support Somewhat support Somewhat oppose Strongly oppose Don't know

15. If you support restoring the tax limitation to 5.7 mills, please indicate how you would prioritize the use of the additional funds:

	<i>High priority</i>	<i>Medium priority</i>	<i>Low priority</i>	<i>Don't know</i>
Improve public safety (add Deputies).....	1	2	3	4
Restore/expand bus transportation.....	1	2	3	4
Maintain service levels at the County medical care facility for older adults (Dumont complex)....	1	2	3	4
Reduce public employee pension debt.....	1	2	3	4

16. How much of a problem, if at all, do you think these issues are in Allegan County?

	<i>Major problem</i>	<i>Moderate problem</i>	<i>Minor problem</i>	<i>Not a problem</i>	<i>Don't know</i>
Animal problems (animals running at large, barking dogs)	1	2	3	4	5
Traffic problems (e.g., residential speeding, aggressive drivers).....	1	2	3	4	5
School safety (e.g., bullying, fighting, or weapons)	1	2	3	4	5
Child abuse and child sexual assault.....	1	2	3	4	5
Domestic violence (adult).....	1	2	3	4	5
Sexual assault/rape (adult).....	1	2	3	4	5
Elder abuse and financial crimes against the elderly	1	2	3	4	5
Driving under the influence (i.e., alcohol or drugs).....	1	2	3	4	5
Underage drinking.....	1	2	3	4	5
Drug abuse (e.g., manufacture, sale, or use of illegal/prescription drugs)	1	2	3	4	5

17. Please rate each of the following aspects of child care in Allegan County:

	<i>Excellent</i>	<i>Good</i>	<i>Fair</i>	<i>Poor</i>	<i>Don't know</i>
High quality, affordable infant care.....	1	2	3	4	5
High quality, affordable toddler/preschool care	1	2	3	4	5
Child care that meets my regular scheduling needs.....	1	2	3	4	5
Child care that meets my irregular scheduling needs (e.g., during school breaks or evenings/weekends).....	1	2	3	4	5
Resources to support families with young children (prenatal-5 years old)	1	2	3	4	5

18. Please indicate how much of a source, if at all, you consider each of the following to be for obtaining information about the County government and its activities, events and services:

	<i>Major source</i>	<i>Minor source</i>	<i>Not a source</i>
County communications via U.S. mail.....	1	2	3
Local newspapers.....	1	2	3
County website (allegancounty.org)	1	2	3
County email notifications	1	2	3
Social media (e.g., Facebook, Twitter).....	1	2	3
Talking with County officials or County staff, or attending public meetings.....	1	2	3
Word of mouth	1	2	3

Allegan County 2019 Community Survey

Our last questions are about you and your household. Again, all of your responses to this survey are completely anonymous and will be reported in group form only.

D1. How often, if at all, do you do each of the following, considering all of the times you could?

	<i>Never</i>	<i>Rarely</i>	<i>Sometimes</i>	<i>Usually</i>	<i>Always</i>
Recycle at home.....	1	2	3	4	5
Purchase goods or services from a business located in Allegan County.....	1	2	3	4	5
Eat at least 5 portions of fruits and vegetables a day.....	1	2	3	4	5
Participate in moderate or vigorous physical activity.....	1	2	3	4	5
Read or watch local news (via television, paper, computer, etc.).....	1	2	3	4	5
Vote in local elections.....	1	2	3	4	5

D2. Would you say that in general your health is:

- Excellent Very good Good Fair Poor

D3. What impact, if any, do you think the economy will have on your family income in the next 6 months? Do you think the impact will be:

- Very positive Somewhat positive Neutral Somewhat negative Very negative

D4. What is your employment status?

- Working full time for pay
 Working part time for pay
 Unemployed, looking for paid work
 Unemployed, not looking for paid work
 Fully retired

D5. Do you work inside the boundaries of Allegan County?

- Yes, outside the home
 Yes, from home
 No

D6. How many years have you lived in Allegan County?

- Less than 2 years 11-20 years
 2-5 years More than 20 years
 6-10 years

D7. Which best describes the building you live in?

- One family house detached from any other houses
 Building with two or more homes (duplex, townhome, apartment or condominium)
 Mobile home
 Other

D8. Is this house, apartment or mobile home...

- Rented
 Owned

D9. About how much is your monthly housing cost for the place you live (including rent, mortgage payment, property tax, property insurance and homeowners' association (HOA) fees)?

- Less than \$300/month \$1,000 to \$1,499/month
 \$300 to \$599/month \$1,500 to \$2,499/month
 \$600 to \$999/month \$2,500 or more/month

D10. Please indicate how many people in each age range live in your household:

D10a. Number of children age 0-5: _____

D10b. Number of children age 6-17: _____

D10c. Number of adults age 18 or older: _____

D11. Are you or any other members of your household aged 65 or older?

- No Yes

D12. How much do you anticipate your household's total income before taxes will be for the current year? (Please include in your total income money from all sources for all persons living in your household.)

- Less than \$25,000 \$62,000 to \$99,999
 \$25,000 to \$37,499 \$100,000 to \$149,999
 \$37,500 to \$49,999 \$150,000 or more
 \$50,000 to \$61,999

Please respond to both questions D13 and D14:

D13. Are you Spanish, Hispanic or Latino?

- No, not Spanish, Hispanic or Latino
 Yes, I consider myself to be Spanish, Hispanic or Latino

D14. What is your race? (Mark one or more races to indicate what race you consider yourself to be.)

- American Indian or Alaskan Native
 Asian, Asian Indian or Pacific Islander
 Black or African American
 White
 Other

D15. In which category is your age?

- 18-24 years 55-59 years
 25-34 years 60-64 years
 35-44 years 65-74 years
 45-54 years 75 years or older

D16. What is your sex?

- Female Male

D17. Do you consider a cell phone or land line your primary telephone number?

- Cell Land line Both

D18. What is the highest grade of school or year of college that you have completed?

- Grade school
 High school degree or GED
 Some college/Associate's degree
 Bachelor's degree
 Post-bachelor's degree/Graduate degree

Thank you for completing this survey. Please return the completed survey to: National Research Center, Inc., PO Box 549, Belle Mead, NJ 08502