

# PUBLIC HEALTH QUARTERLY UPDATE

- **Angelique Joynes**, Health Officer, MPH, RN
- **Randy Rapp**, Environmental Health Services Manager, RS
- **Lisa Letts**, Personal Health Services Manager, BSN, RN
- **Lindsay Maunz**, Planning and Preparedness Manager, MPH
- **Rosemary Graham**, Resource Recovery Coordinator







## ADMINISTRATION

- Supports the department as a whole
- Issues Advisories, Cease and Desist letters, etc.
- Collect and evaluate data needed to support efficient public health service delivery and share data with the community

## RESOURCE RECOVERY

- Coordinate Resource Recovery Program for participating LUG's
- Facilitate Solid Waste Planning Committee

## PERSONAL HEALTH

- Provides services such as STI/HIV, Immunizations, Lead, Hearing and Vision, Communicable Disease, and Children's Special Health Care Services (CSHCS)
- Provides education, in-services, and on-site inspections for medical providers who participate in Vaccine for Children (VFC) and Adult Vaccine Program (AVP)
  - Safe storage and handling
  - Inventory management
  - Patient education

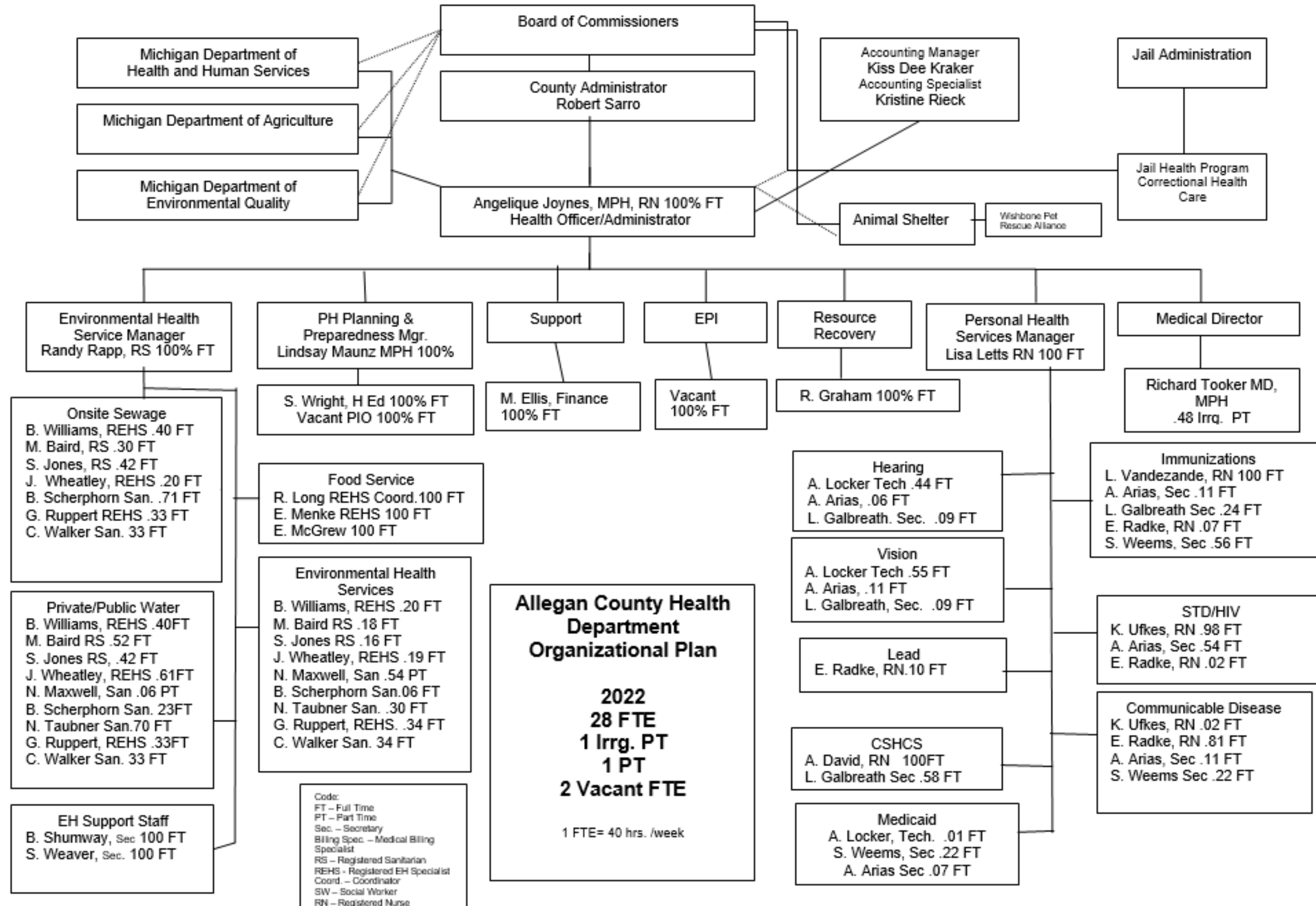
## ENVIRONMENTAL HEALTH

- Provides services such as well and septic permits, soil erosion permits, restaurant inspections, ground water contamination surveillance, beach sampling, etc.
- Identifies opportunities for environmental health education and work with Planning and Preparedness to develop materials

## PLANNING AND PREPAREDNESS

- Provides services such as community health needs assessment and community health improvement plans, emergency preparedness, and other planning and health education services that improve community health and quality of life in Allegan County.
- Interacts with the community through social media and media interviews.





## 3 P's of Public Health

- Promote
- Protect
- Prevent

## About the Essential Public Health Services (EPHS)

- The framework was originally released in 1994 and more recently updated in 2020. The revised version is intended to bring the framework in line with current and future public health practice.

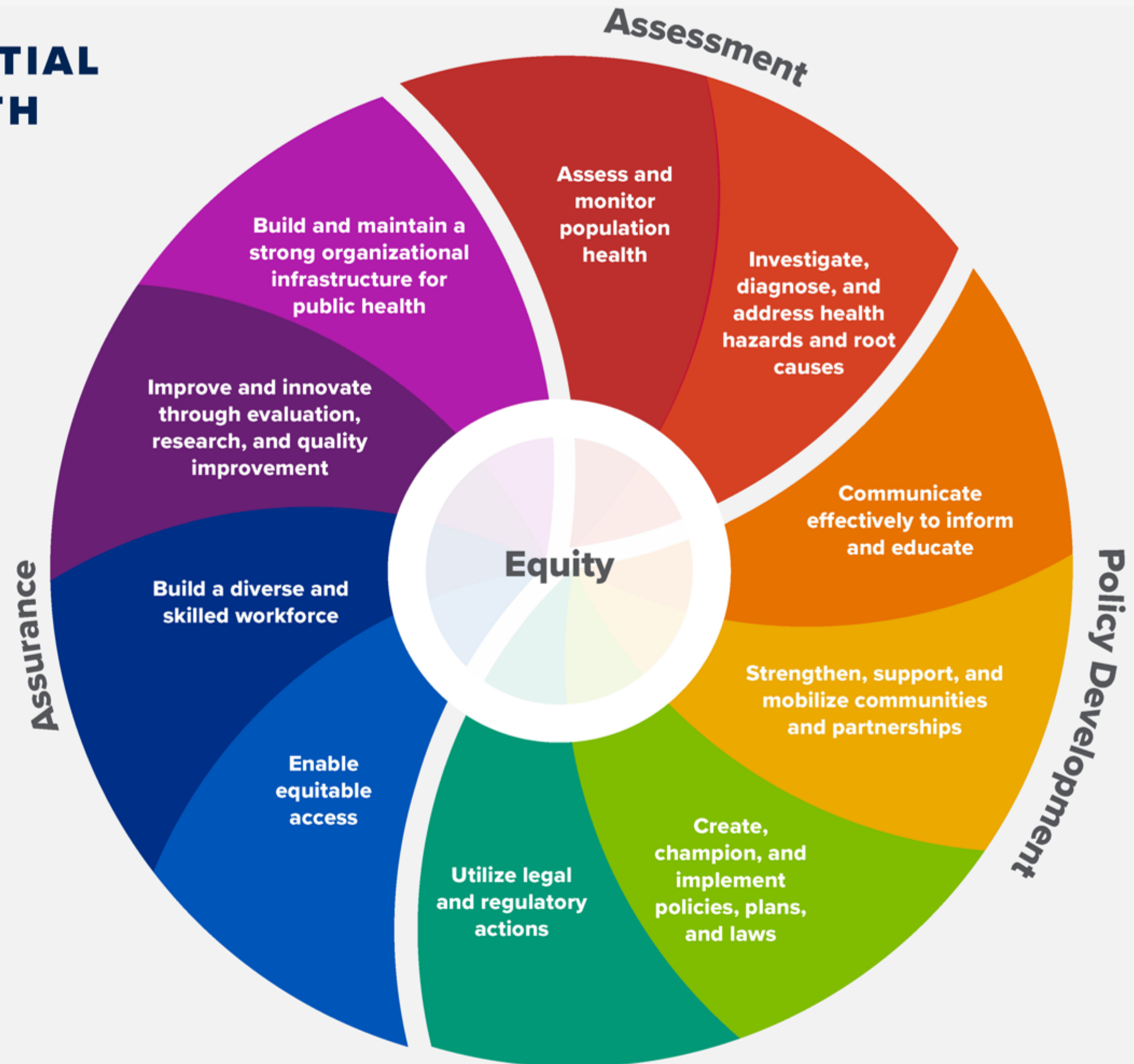
## Core Functions

- Assessment
- Policy Development
- Assurance

## THE 10 ESSENTIAL PUBLIC HEALTH SERVICES

*To protect and promote the health of all people in all communities*

The 10 Essential Public Health Services provide a framework for public health to protect and promote the health of all people in all communities. To achieve optimal health for all, the Essential Public Health Services actively promote policies, systems, and services that enable good health and seek to remove obstacles and systemic and structural barriers, such as poverty, racism, gender discrimination, and other forms of oppression, that have resulted in health inequities. Everyone should have a fair and just opportunity to achieve good health and well-being.



# The 10 Essential Public Health Services (National Framework)

The 10 Essential Public Health Services provide a framework for public health to protect and promote the health of *all people in all communities*.

## Essential Public Health Service #1

Assess and monitor population health status, factors that influence health, and community needs and assets

## Essential Public Health Service #2

Investigate, diagnose, and address health problems and hazards affecting the population

## Essential Public Health Service #3

Communicate effectively to inform and educate people about health, factors that influence it, and how to improve it

## Essential Public Health Service #4

Strengthen, support, and mobilize communities and partnerships to improve health

## Essential Public Health Service #5

Create, champion, and implement policies, plans, and laws that impact health

## Essential Public Health Service #6

Utilize legal and regulatory actions designed to improve and protect the public's health

## Essential Public Health Service #7

Assure an effective system that enables equitable access to the individual services and care needed to be healthy

## Essential Public Health Service #8

Build and support a diverse and skilled public health workforce

## Essential Public Health Service #9

Improve and innovate public health functions through ongoing evaluation, research, and continuous quality improvement

## Essential Public Health Service #10

Build and maintain a strong organizational infrastructure for public health



# Matrix of Services of Local Public Health for Michigan

## Mandated Services

Services	Rule or Statutory Citation	Required	Basic	Mandated	LPHO
Immunizations	PA 349 of 2004 - Sec. 218 and 904; MCL 333.9203, R325.176	X	X	X	X
Infectious/Communicable Disease Control	MCL 333.2433; Parts 51 and 52; PA 349 of 2004 - Sec. 218 and 904; R325.171 et seq.	X	X	X	X
STD Control	PA 329 of 2004 - Sec. 218 and 904; R325.177	X	X	X	X
TB Control	PA 329 of 2004 - Sec. 218	X	X	X	
Emergency Management - Community Health Annex	PA 329 of 2004 - Sec. 218; MCL 30.410	X	X	X	
Prenatal Care	PA 329 of 2004 - Sec. 218	X	X	X	
Family planning for indigent women	MCL 333.9131; R325.151 et seq.	X		X	
Health Education	MCL 333.2433	X		X	
Nutrition Services	MCL 333.2433	X		X	
HIV/AIDS Services; reporting, counseling, and partner notification	MCL 333.5114a; MCL 333.5923; MCL 333.5114	X		X	
Care of individuals with serious Communicable disease or infection	MCL 333.5117; Part 53; R325.177	X		X	
Hearing and Vision Screening	MCL 333.9301; PA 349 of 2004 - Sec. 904; R325.3271 et seq. R325.13091 et seq.	X		X	X
Public Swimming Pool Inspections	MCL 333.12524; R325.2111 et seq.	X		X	
Campground Inspection	MCL 333.12510; R325.1551 et. seq	X		X	

# Matrix of Services of Local Public Health for Michigan, continued

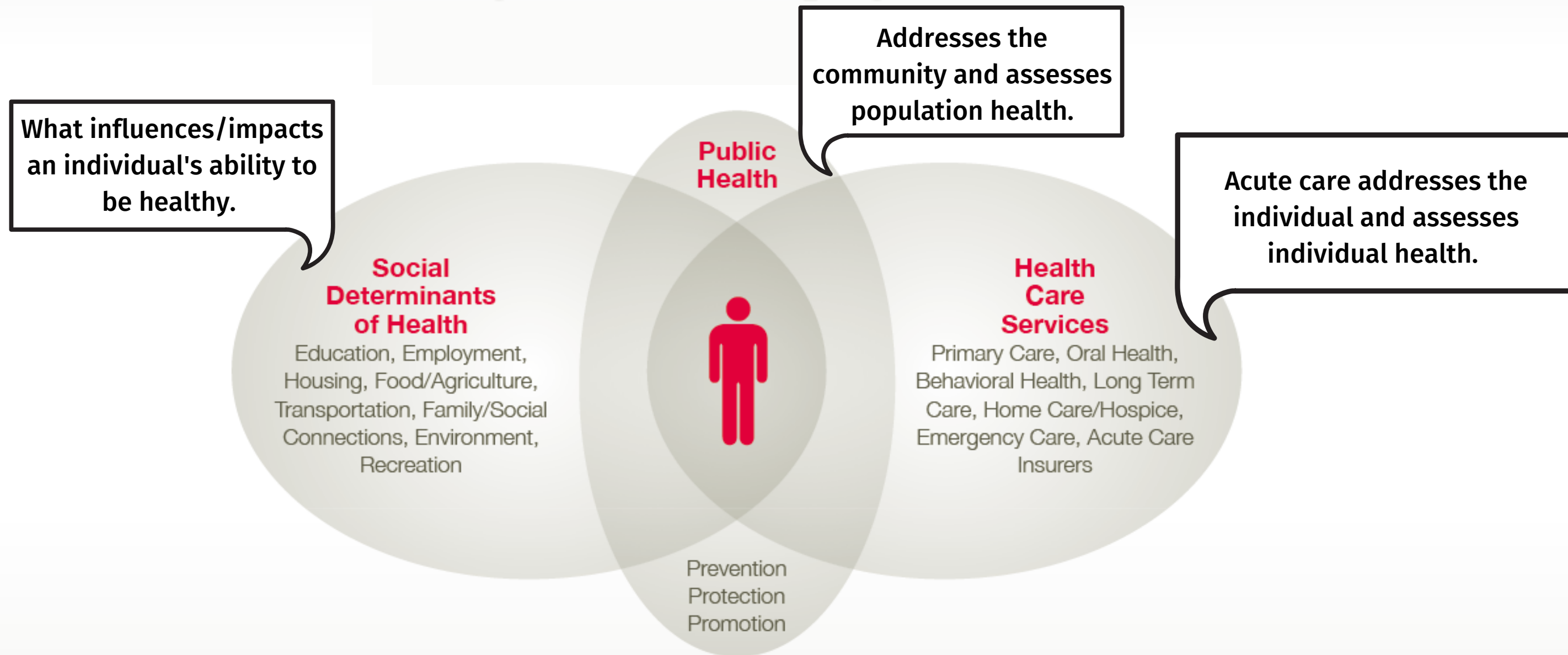
Services	Rule or Statutory Citation	Required	Basic	Mandated	LPHO
Public/Private On-site Wastewater	MCL 333.12751 to MCL 333.12757 et seq., R323.2210; R323.2211	X		x	
Food Protection	PA 92 of 2000 MCL 289.3105; PA 349 of 2004 - Sec. 904	X		x	
Pregnancy Test related to informed consent to abortion	MCL 333.17015(18)	X		x	
Public/Private Water Supply	MCL 333.1270 to MCL 333.12715; R325.1601 et seq., MCL 325.1001 to MCL 325.1023; R325.10101 et seq.	X			X

Name	Citation	Description
Required Service	MCL 333.2321 (2); MCL 333.2408; R325.13053	(A) a basic service designated for delivery through Local Public Health Department (LPH), (B) local public health service specifically required pursuant to Part 24 or specifically required elsewhere in state law, or (C) services designated under LPHO
Basic Service	MCL 333.2311; MCL 333.2321	A service identified under Part 23 that is funded by appropriations to MDCH or that is made available through other arrangements approved by the legislature. Defined by the current Appropriations Act and could change annually.
Mandated Service	MCL 333.2408	The portion of required services that are not basic services, but are "required pursuant to this part [24] or specifically required elsewhere in state law.
LPHO	PA 349 of 2004 - Sec. 904	Funds appropriated in part 1 of the MDCH Appropriations Act that are to be prospectively allocated to LPH to support immunizations, infectious disease control, STD control and prevention, hearing screening, vision services, food protection, public water supply, private groundwater supply, and on-site sewage management.



# Acute Care vs. Public Health

## Total Population Health:

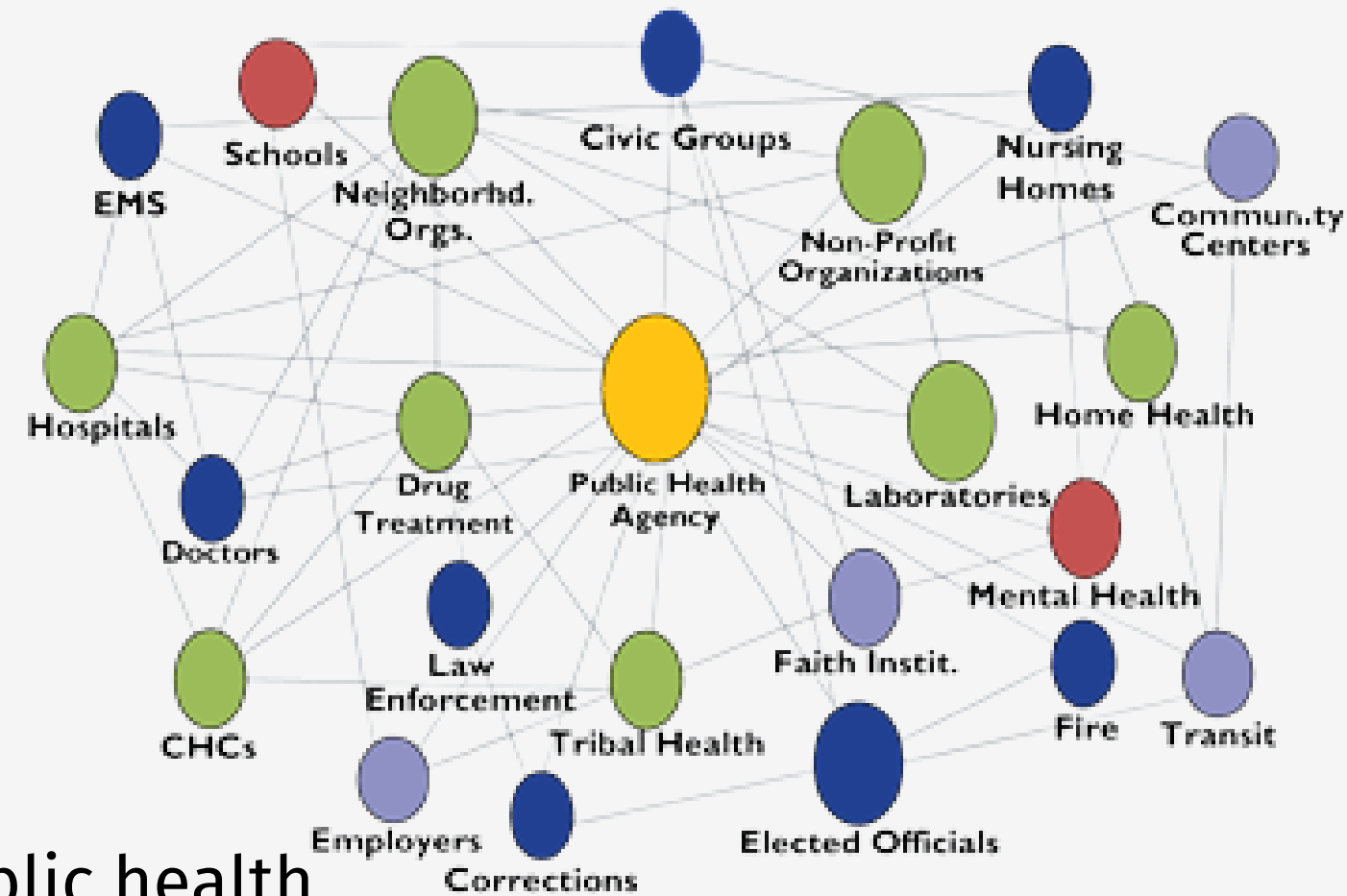


*advancing equity for all*

# Public Health vs. Individual Health

"Public Health": the health of the population as a whole

- Pursuant to MCL 333.2433
  - A local health department shall continually and diligently endeavor to prevent disease, prolong life, and promote the public health through organized programs, including prevention and control of environmental health hazards; prevention and control of diseases; prevention and control of health problems of particularly vulnerable population groups; development of health care facilities and health services delivery systems; and regulation of health care facilities and health services delivery systems to the extent provided by law.



"Health": the state of being free from illness or injury.

- While a doctor treats people who are sick, public health professionals try to prevent people from getting sick or injured in the first place. They also promote wellness by encouraging healthy behaviors. (APHA)

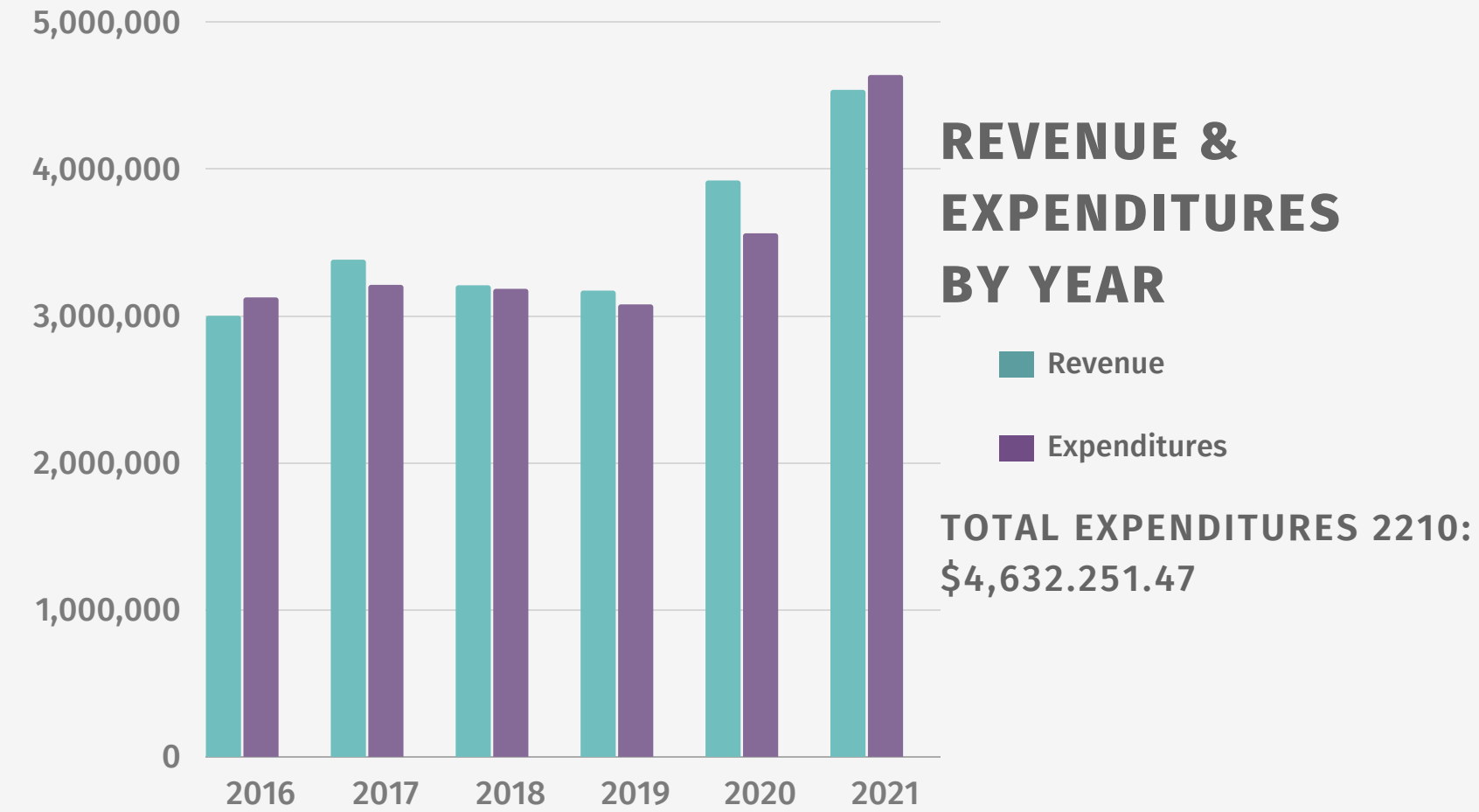
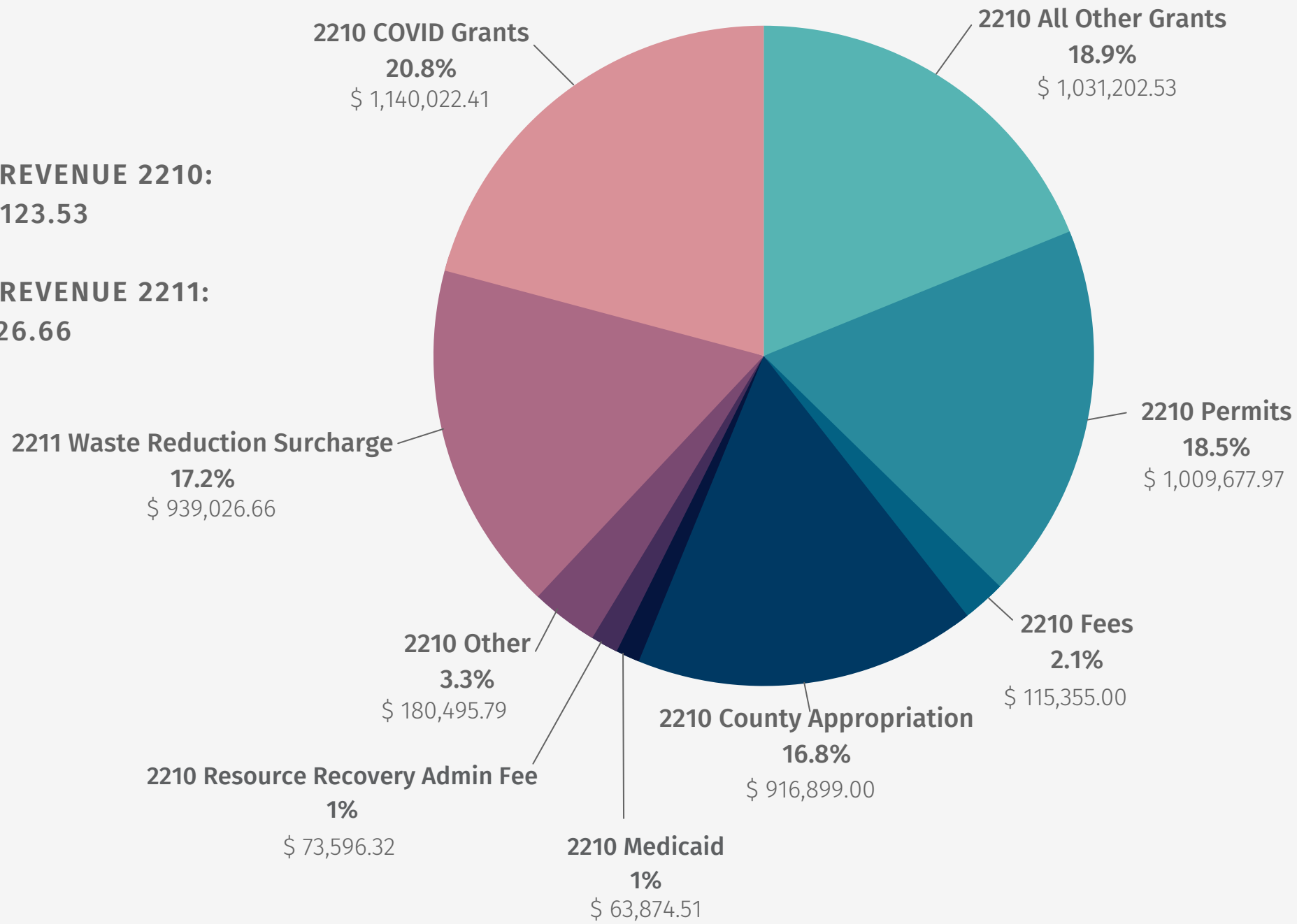


# Finance: 2021 Activities

## 2021 REVENUE

**TOTAL REVENUE 2210:**  
\$4,531,123.53

**TOTAL REVENUE 2211:**  
\$939,026.66





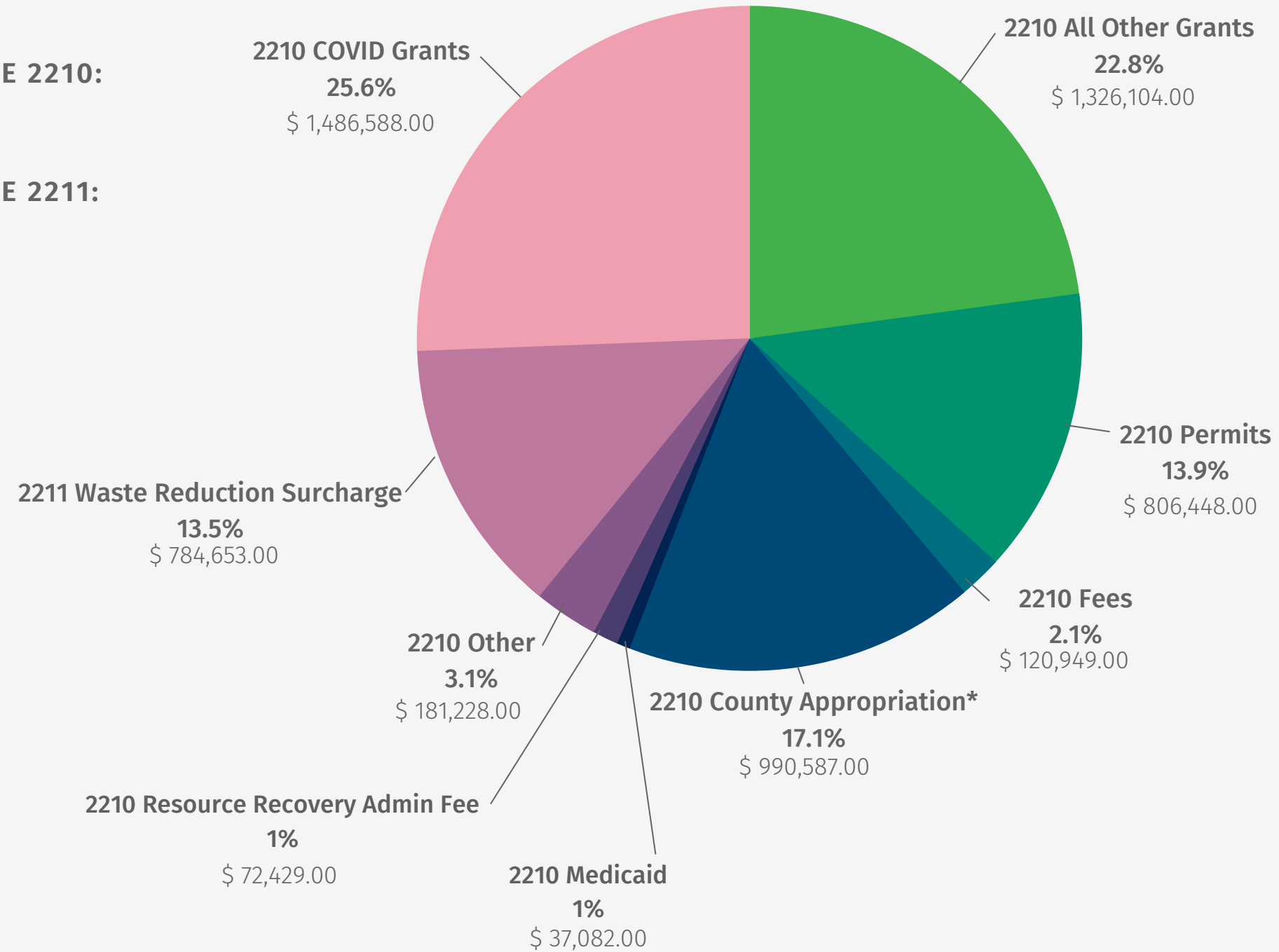


# Finance: 2022 Activities

## 2022 BUDGETED REVENUE

**TOTAL BUDGETED REVENUE 2210:**  
**\$5,021,415.00**

**TOTAL BUDGETED REVENUE 2211:**  
**\$784,653.00**



# A YEAR IN REVIEW

## 2021 ACCOMPLISHMENTS



HEALTH  
Department

### ADMINISTRATION



Participated in COVID Court Planning Task force for public health expertise and guidance



Met weekly with Superintendents for school discussions

**33,190**

recommendations and advisories issued



Updated plans & worked with MPHI on developing a strategic plan visual



Implemented the mobile health clinic with donation from Gun Lake Tribe

**223**

Customer Satisfaction Surveys received

**93**

Inquiries received

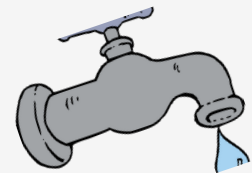
### ENVIRONMENTAL HEALTH

**2**

Sanitarians became Registered Environmental Health Specialists (REHS)



Provided a total of 8,998 services, a 1.4% increase from 2020



Worked with Hydrosimulatics to complete a comprehensive Ground Water Study of Allegan County



Field team met the 14 business day turn-around time 96.2% of the time while assisting with COVID-19 response

**1,500+**

Tons of comingled recycling collected through 11 curbside recycling routes, 3 township drop-sites, and 3 regional collection sites



Scrap tire collection events, 4,298 tires collected total

**3**

Household hazardous waste and electronics collection events



Implemented a new social media campaign promoting recycling education

### PERSONAL HEALTH



Despite focus on COVID-19, essential services like TB, HIV/STI, immunizations, hearing and vision, communicable disease investigation, and CSHCS continued



Implemented email newsletter for provider and long-term care facility updates, sent 11 newsletters to 46 emails



Improved STI/HIV case management with new database

**5,565**

Hearing and Vision screenings conducted



Built community relationships through vaccine and testing events, health updates, and community involvement

### PUBLIC HEALTH PLANNING & PREPAREDNESS

Community Health Survey developed for 2022 data collection



Implemented an email Newsletter to update the community on public health news, sent 30 public health updates to over 27,000 emails



**172,055**

Individuals reached on Facebook



# Administration: 2022 Activities (Quarter 1)

## CUSTOMERS

### Community Health Needs Assessment and Community Health Improvement Plan (CHNA/CHIP)

- Community Health Survey sent out January 25, 2022
  - Closes March 1, 2022
  - Ascension Borgess Allegan and United Way collaboration
- Data compiled and shared with stakeholders by March 4, 2022
- CHNA Report to be shared to Ascension Borgess Allegan's Board, United Way's, and Board of Commissioners by June 30, 2022
- CHIP timeline developed by June 30, 2022

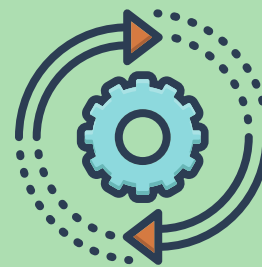
TAKE SURVEY



## FINANCIAL STABILITY

### Transition to Mandated Services

- Using other resources, such as CDC Foundation staffing to supplement COVID-19 response



### Optimize Grant Funding to Minimize County funding

- Reviewing Financial Statement Reports (FSRs) on a regular basis
- Reallocation of essential local public health services funding as needed to maximize utilization of all grant funding

## ENGAGED WORKFORCE

### Workforce Development Plan

- Updated 2022 Workforce Development Plan
- Ensuring staff are getting updated on training and requirements to provide their public health services

### Supporting Employees with Pandemic and Compassion Fatigue

- Assessing individual concerns in L&G sessions
- Continue to promote and bring opportunities that promote employee wellness



## IMPROVED PROCESSES

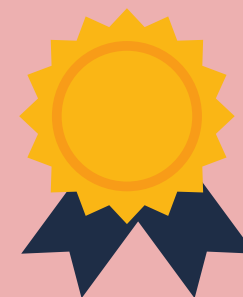
### CI Project: Contracts/Agreements

- Public Health has over 150 agreements (MOUs, Contracts, etc.) to manage with Project Management. Working collaboratively on identifying efficiencies for each type of agreement.
  - Activities include:
    - Compile list of all types of agreements
    - Review current process of each agreement
    - Meet with Project Management on process and template alignment



### Accreditation Readiness

- Assessing accreditation readiness for local public health accreditation and determining gaps





# Potential Emerging Public Health Concerns

## ADMINISTRATION

- Communicable diseases/Emerging illnesses, and being able to respond to other public health concerns with limited resources
- Limited access, delay of care related to COVID-19 and impact on chronic diseases and health outcomes for residents
  - Tele-health
  - Utilization of Community Health Workers
  - Working with other sectors to develop Community Health Hubs
- Social Determinants of Health and Equity and impact on health outcomes
- Working with communities as a Chief Public Health Strategist in a national, state, and local environment where communities are currently divided.

PERFORMANCE MEASURES: WHERE WE'RE AT  WHERE WE WANT TO BE

	 2019	 2021	 MI 2021	 U.S. Top Performers 2021
PRIMARY CARE PHYSICIANS	3,850:1	4,510:1	1,270:1	1,030:1
DENTISTS	3,420:1	2,880:1	1,310:1	1,210:1
MENTAL HEALTH PROVIDERS	1,270:1	1,080:1	360:1	270:1





# Resource Recovery: 2022 Activities (Quarter 1)

## CUSTOMERS

### Online Reporting Tools

- Expanding online reporting tools for residents to request curbside recycling service and to report missed recycling collection

### Supporting Local Units of Government (LUG)

- Supporting local municipalities interested in participating in the Recycling Surcharge election

### Materials Management County Engagement

- Reviewing data collected by West Michigan Sustainable Business Forum through the Materials Management County Engagement Grant

## FINANCIAL STABILITY

### Tire Collection Funding

- Identified agriculture tire collection funding source.
  - Outlining service delivery options with VBDSP grant coordinator

## IMPROVED PROCESSES

### Exploring Online Scheduling Solutions

- Coordinating with IS to explore online scheduling solutions for household hazardous waste and sharps appointments

### Website Improvements

- Improving Recycling website through on-going creation of a recycling guide for difficult to recycle items

## EMERGING RESOURCE RECOVERY CONCERNS

- Legislation requiring updating plans in county. Our current resources in program are not able to accommodate this revision
- Rising transportation and labor costs resulting in increased recycling and household hazardous waste collection costs.
- Lack of countywide recycling and household hazardous waste collection options for residents.
- Lack of available Health Department employees, volunteers, and trustees to support recycling and scrap tire collections.



# Environmental Health: 2022 Activities (Quarter 1)

## CUSTOMERS

### Filebound

- **Project outcome:** customers will have access to files on the internet. This project is funded through an MDHHS grant
  - Activities for this Quarter include:
    - Purchase and install technology equipment
    - Interview, hire, and on-board a Robert Half employee
    - Purge existing files
    - Scan files into PDF documents

### Ground Water Ad Hoc Committee

- **Project outcome:** Have a community driven work group around the Ground Water study
  - Activities for this Quarter Include
    - Send email and schedule the 1st meeting for work group
    - Develop Committee Charter

## FINANCIAL STABILITY

### Michigan Department of Environment, Great Lakes, and Energy (EGLE) Financial Statement Reporting

- New for 2022

## IMPROVED PROCESSES

### Standard of Work for Ground Water Laboratory Results (PFAS, etc.)

- Activities for this quarter include:
  - Procedures on ground water site laboratory results
  - Tracking MDHHS registered sites to ensure filter replacements, etc. are not missed

### Type II Water Supply Rules/Regulation Changes

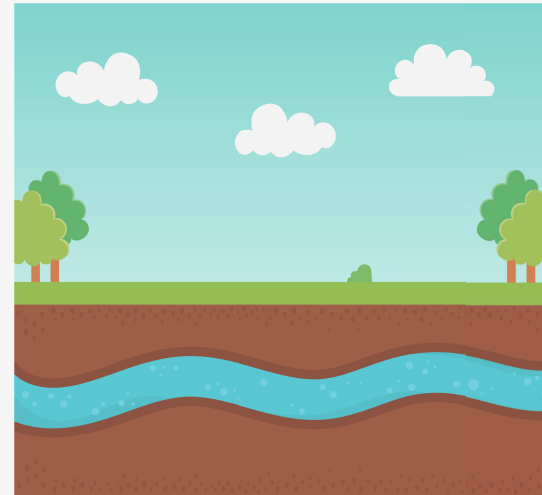
- 2016 Coliform rules change increasing testing, with no additional funding.
  - This creates a challenge for local health department Type II or Non-community Water Supply Coordinators' to meet the requirements



# Potential Emerging Environmental Issues

## Ground Water Contamination

- Current Sites of PFAS Interest: KAVCO, Otsego, DeYoung Landfill (sites in Allegan County on Michigan PFAS Action Response Team's website)
- Ground Water Monitoring Program:
  - Sampled 34 residences in Allegan County for ground water contamination (quarterly, semi-annual, or annual)
  - This program is not part of the PFAs investigations



## Vector-borne Diseases, including EEE

- Mosquito/Tick Surveillance program: working with Resource Recovery and Public Health for agriculture tire collection. Updates will be shared in future BOC updates
- Longer, warmer summer season, or milder winter weather may contribute to the incidences of EEE.
  - Educating individuals of the vector borne disease risks in early fall, where temperatures are more mild, but the vectors are still active



## Harmful Algal Blooms (HABs)

- Longer, warmer summer season may contribute to incidences and duration of HABs
  - Waters staying warmer can create increased risk of toxic algae blooms
    - This can cause potential impacts to tourism and places of recreation

## Beach Testing Surveillance and Monitoring

- Monitor presence of E.coli, soil erosion, other debris that can impact our lakes
  - This can cause potential impacts to tourism and places of recreation
- Educate beach-goers on healthy water habits
  - Work with Parks and Local Units of Government (LUGs) to get signage re-established for Spring at Allegan County bodies of water





# Personal Health: 2022 Activities (Quarter 1)

## CUSTOMERS

### Lead Testing

- **Program goal:** Increase the number of children <6 years old testing for Lead to help prevent lifelong negative health impacts
  - Activities for this Quarter include:
    - Provide education and follow-up on Venous confirmation of EBL to parents of children with elevated blood lead levels greater than 4.5µg/dL
    - Educate the public and health care providers about childhood lead poisoning and other housing-related health hazards.



### CSHCS Transition Toolkit Development

- **Program goal:** Increase the percentage of adolescents, with and without special healthcare needs, who receive services necessary to make transitions to adult health care.
  - Activities for this Quarter include:
    - Create local transition toolkit for young adults
    - Offer care plan development regarding transition of care to CSHC clients aged 12 and provide CSHC clients aging out assistance regarding accessing adult care and linking to resources

## CUSTOMERS

### Immunizations

- **Program goal:** Increase vaccine coverage rates for vaccine preventable disease in Allegan County for all population with a priority on those 19 and under, as well as vulnerable population



- Activities for this Quarter include:
  - Adopt a community-based approach to the provision of immunization services working with community partners
  - Provide a recall for individuals that are not up to date
  - Working to make vaccine available in non-traditional settings
  - Education the public on vaccine preventable diseases

## FINANCIAL STABILITY

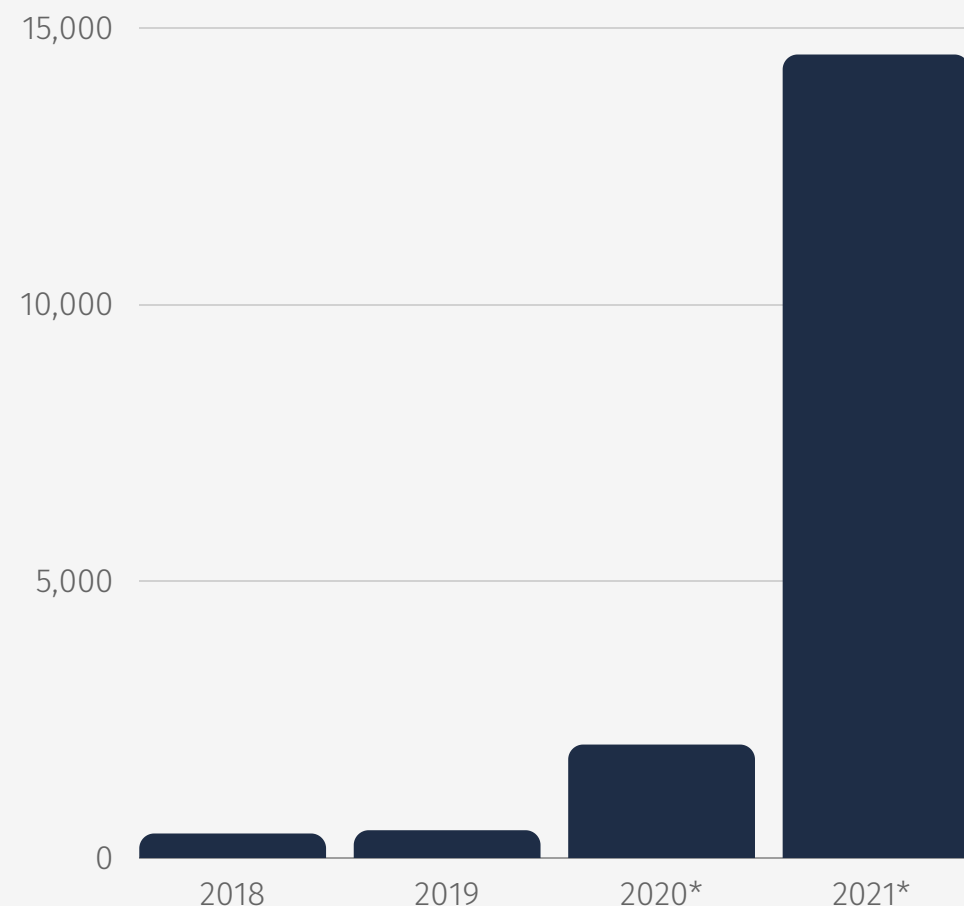
- Evaluating immunization fees
- Determining what resources are needed to provide mandated communicable disease investigation with the influx of communicable disease cases

## IMPROVED PROCESSES

- Ensuring all QA activities are being done and identifying opportunities for improvement

# Potential Emerging Personal Health Issues

Number of Communicable Disease cases reported in MDSS, Allegan County, 2018-2021



\*COVID-19 case investigations had to be prioritized, this is an under-reported number due to capacity.

## Communicable Diseases vs. Resources Available

- Unfortunately, COVID-19 is most likely not going away and we need to be able to manage COVID-19 along to other communicable diseases. We need to plan and prepare to quickly respond to potential outbreaks to minimize impact on community.
- The graph to the left shows the number of Communicable Disease cases reported in MDSS for Allegan County over the last 4 years. We have seen a significant increase in numbers from COVID-19.
  - Our current FTEs cannot keep up with this increase.

## Lead Levels

- The CDC has determined that the new reference value (NHANES study) is 3.5 mcg/dl.
- There is no guidance on what we are supposed to do, however we are working with all of the entities involved to see if children would qualify for NCM services (Medicaid) and the Lead Safe Home program (HUD and CHIP funds) for remediation.
  - This change will result in additional need for testing, serial follow up, case management, home visiting and resource referral.
- **Legislation:** HB 5417 (Lead Reporting Requirements), HB 5418 (Automatic CSHCS Enrollment), and HB 5423 (Referral Related to Lead for Minors) have all been introduced to the house





# Planning and Preparedness: 2022 Activities (Quarter 1)

## CUSTOMERS

### Community Inclusion Plan (Requirement in PHEP Workplan)

- **Requirement:** Enhance public health preparedness and awareness through outreach to community partners, including groups representing at-risk populations, and continue to implement a multi-year strategy to ensure greater integration of vulnerable/functional needs populations into local plans, planning and exercises.
  - Activities for this Quarter include:
    - Update Whole Community Inclusion Plan to reflect identified vulnerable populations for the COVID-19 After Action Report

### Communication Plan

- Update plan to include Health Education, Outreach, and Mobile Clinic objectives and activities:
  - Include at least 4 community outreaches for 2022
  - Incorporate national public health observances in monthly newsletter
  - Collaborate with other agencies to improve marketing of community events (MACC, Schools, Businesses, Health Care)

### Planning for Vaccine Resistant COVID-19 Variant

- Identifying Resources needed and Activities in the event that there is a vaccine resistant COVID-19 Variant with higher mortality rates

## FINANCIAL STABILITY

### Grant and Technical Assistance Opportunities

- Assessing 10 EPHS and National Public Health Accreditation Readiness
  - Seek grant opportunities and/or Technical Assistance from Michigan Public Health Institute (MPHI) to bridge gaps

## IMPROVED PROCESSES

### COVID-19 After Action Report (similar to Otsego and EEE)

- Develop survey instrument to measure strengths, weaknesses, threats and opportunities for improvement from the COVID-19 response
- Deploy the survey tool to community partners, community members, businesses, schools, LUG's by March 2022.

### COVID-19 Quarterly Action Plan Update

- Submit COVID-19 Quarterly Action Plan to MDHHS by March 31, 2022

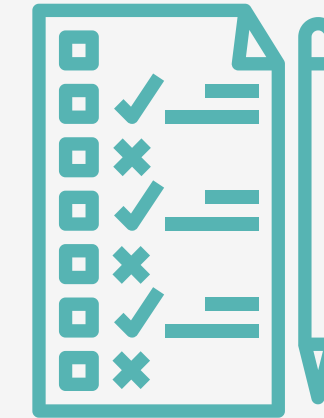


# Potential Emerging Public Health Concerns

## PLANNING AND PREPAREDNESS

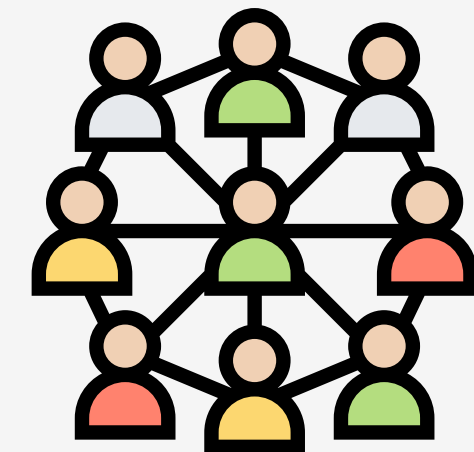
Improve our ability to prepare for, respond to, and recover from public health emergencies with limited resources

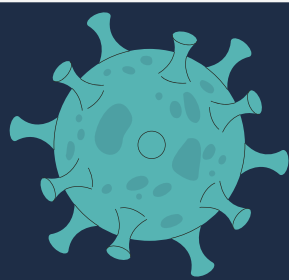
- Historically: ground water contamination, EEE, and COVID-19.
- Assuring enough cache of PPE and other supplies needed for public health emergencies
- We need to be prepared to rapidly respond to vaccine resistant COVID-19 variant or other communicable diseases with high mortality rates
- Ability to deploy mass vaccination and/or medical countermeasure clinics with partnership emergency management and recruit/activate over 200 volunteers.
  - Moving forward, many of these volunteers are back at work
- Work with Emergency Management and EOC Annexes to identify gaps and improve all hazard emergency responses



Working with sectors to align resources and collaboration related to Community Health Needs Assessment and Community Health Improvement Plan

- Ensuring resources are aligned and reduce duplication of efforts in planning and implementation
- Connecting organizations to maximize collective impact in our community





# Living with COVID-19

Adaptation to COVID-19 is important with no clear end in sight to this over two-year pandemic.

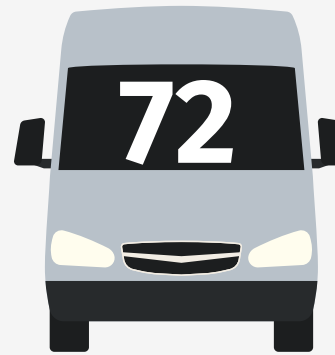
- ACHD is updating procedures to manage COVID-19 like other communicable diseases while we are in this post-surge recovery period.
- Quarantine will only be required if there is an outbreak or ongoing spread in the facility.
- We will continue to promote to use layers of protection to keep yourself and your loved ones healthy. Additional surges are possible; please be prepared to take measures in the future to protect yourself, your loved ones, and your community.
- It is important to understand that based on the risk of COVID-19, vaccine effectiveness, and impact on deaths and hospitalizations, mitigation strategies will need to increase to strengthen and protect public health when those metrics increase.



# COVID-19 RESPONSE 2021 AT A GLANCE



HEALTH  
Department



mobile  
vaccination  
clinics held

providing mitigation  
assessments and  
technical assistance to  
**376 businesses**



vaccination  
clinics held

connected with **35** care  
facilities on Monoclonal  
Antibody Therapies (MAB)  
toolkit, and influenced to  
adopt MAB protocols



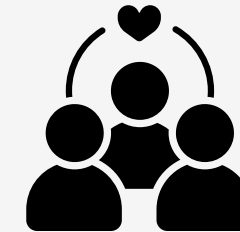
vaccines administered at  
ACHD vaccination events

**30**

vaccinations given to  
homebound individuals



testing events held,  
with collaboration  
from HONU and MING



**118**

vaccine reallocations

## IN 2021 THERE WERE:

**13,819**  
total COVID-19 cases

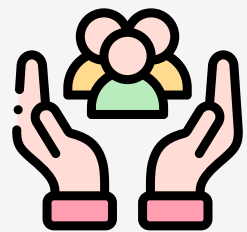
**7,445** total COVID-19  
close contacts

**319** total COVID-19  
hospitalizations

**171** total COVID-19  
related deaths

**52** Weekly Situational  
Reports submitted

**26**  
COVID-19 vaccine  
providers approved



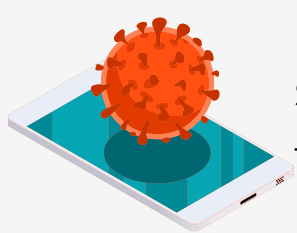
Assessed local communities for gaps  
in needs, and barriers to resources.  
Deployed/connected to resources.

**29**  
Community Leader  
Updates Provided

**over 250** individuals vetted completely  
through Allegan County's volunteer  
process for COVID-19 vaccine



Implemented **scheduling tool** for vaccination  
appointments



Deployed **PEG** (technology  
system) to reach individuals  
for contact tracing and case  
investigation

Coordinated a local  
Communications  
task force for  
vaccine



Deployed a business reporting form  
for **case investigation** and  
management



Implemented Sign-up  
Genius for **volunteer**  
deployment



# COVID-19 VACCINE TIMELINE

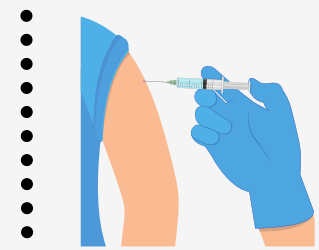
# LARGEST VACCINATION DEPLOYMENT IN HISTORY



HEALTH Department

## JANUARY 2021

- Assisted Meijer in providing their first dose of COVID vaccine
- **8,758** residents received first doses of vaccine to eligible priority phase groups



## MARCH 2021

- ACHD holds first JBS vaccination clinic (vulnerable population)
- ACHD unveils **Mobile Health Clinic** to help with vaccination efforts across the County, from donation by the Gun Lake Tribe
- **March 29** provided Perrigo technical assistance and logistic support to become provider as closed pod and reallocated vaccine



## FEBRUARY 2021

- ACHD holding 2-3 mass vaccination clinics each week
- **16,363** residents have received at least one dose of vaccine.



## APRIL 2021

- ACHD holding 3-4 mass vaccination clinics each week
- **42,364** residents have received at least one dose of vaccine

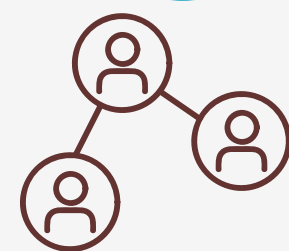


## MAY 2021

- Individuals **12 years and older** eligible to receive Pfizer vaccine

## JUNE 2021

- Demand for vaccine has decreased in clinic locations. ACHD shifts focus to **mobile vaccination clinics** to reach more people and ensure accessibility
- Provided technical assistance to Allegan County Correctional Facility as a vaccine provider

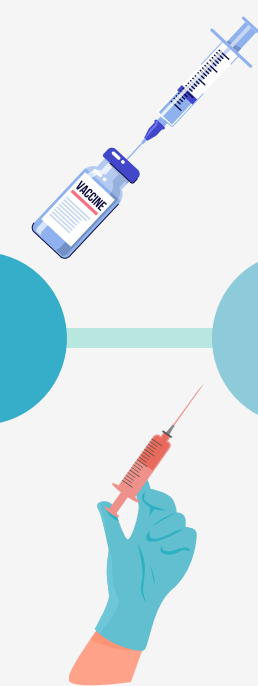


## JULY 2021

- **53,530** residents **12 years and older** vaccinated with at least one dose of vaccine

## AUGUST 2021

- ACHD providing third doses to **immunocompromised** individuals
- Attended **4** School Open House events for vaccine administration



## SEPTEMBER 2021

- COVID-19 **booster** doses available for those **18** years and older
- Provided vaccine at Senior's Day and Ladies Day during Allegan County Fair

## OCTOBER 2021

- **59,627** residents **12 years and older** have received at least one dose of vaccine
- Provided vaccine at Veteran's Stand Down event

## NOVEMBER 2021

- **5-11 year olds** now eligible to receive COVID-19 vaccine



## DECEMBER 2021

- COVID-19 **booster** doses available for those **16 years and older**
- **64.7%** of residents aged **16** years and older have received at least one dose of vaccine

# Intersection of Public Health Outcomes and Economic Prosperity

Under the Trump Administration, Surgeon General Jerome Adams published the "Community Health and Economic Prosperity" in 2021. The goal: to **improve the health of Americans and help foster a more sustainable and equitable prosperity**. The multi-pronged approach includes:

- Engaging businesses to be community change-makers and forces for health in their communities
- Implementing solutions to help improve and sustain the health of communities, such as comprehensive smoke-free policies and affordable housing
- Strengthening communities to be places of opportunity for health and prosperity for all

## In 2021

- Allegan County Health Department worked with Lakeshore Advantage on deploying a survey to identify PPE needs and vaccine needs. This data was shared weekly, which was used to connect businesses with resources, including ACHD providing on-site vaccine clinics.
- Worked with Spectrum Health and InterCare on redeployment of vaccine and staff to maximize the amount of residents that could be vaccinated in the shortest amount of time.

Watch the video here: <https://youtu.be/E1XAUkVBz28>



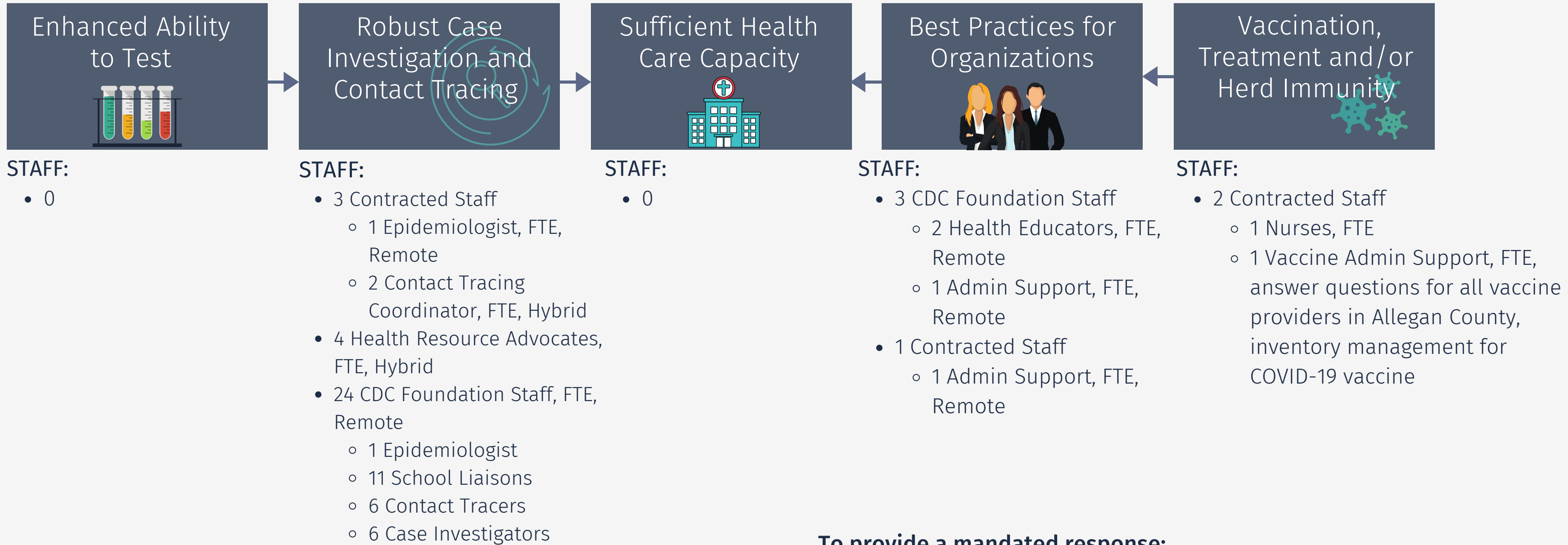




HEALTH Department

# Allegan County Health Department: Organization Chart, Staff for COVID Response

## COVID-19 MITIGATION COMPONENTS



### To provide a mandated response:

- 6 Contracted Staff
- 4 School Health Resource Advocates (specific activities)
- 27 CDC Foundation staff (specific activities)

**All CDC Foundation staff are provided at no cost to Allegan County. Currently available until July 31, 2022.**

- Helps ACHD provide a mandated response for a longer period of time
- Majority onboarded in January 2022

# Ongoing response to COVID-19 cycle



## Readiness (Pre-Surge)

A surge is expected due to a new variant, local outbreak, seasonal changes.

Expect increased illness severity and overwhelmed hospital capacity.

- Educate public regarding new risks.
- Ensure enough supplies of tests, masks and medications.

## Response (Surge)

A surge means rapid response by local and state public health.

- Increased supplies for testing, masking and medications.
- Increased masking, testing and social distancing efforts.



Visit [Michigan.gov/Coronavirus](https://Michigan.gov/Coronavirus) for current COVID-19 information.

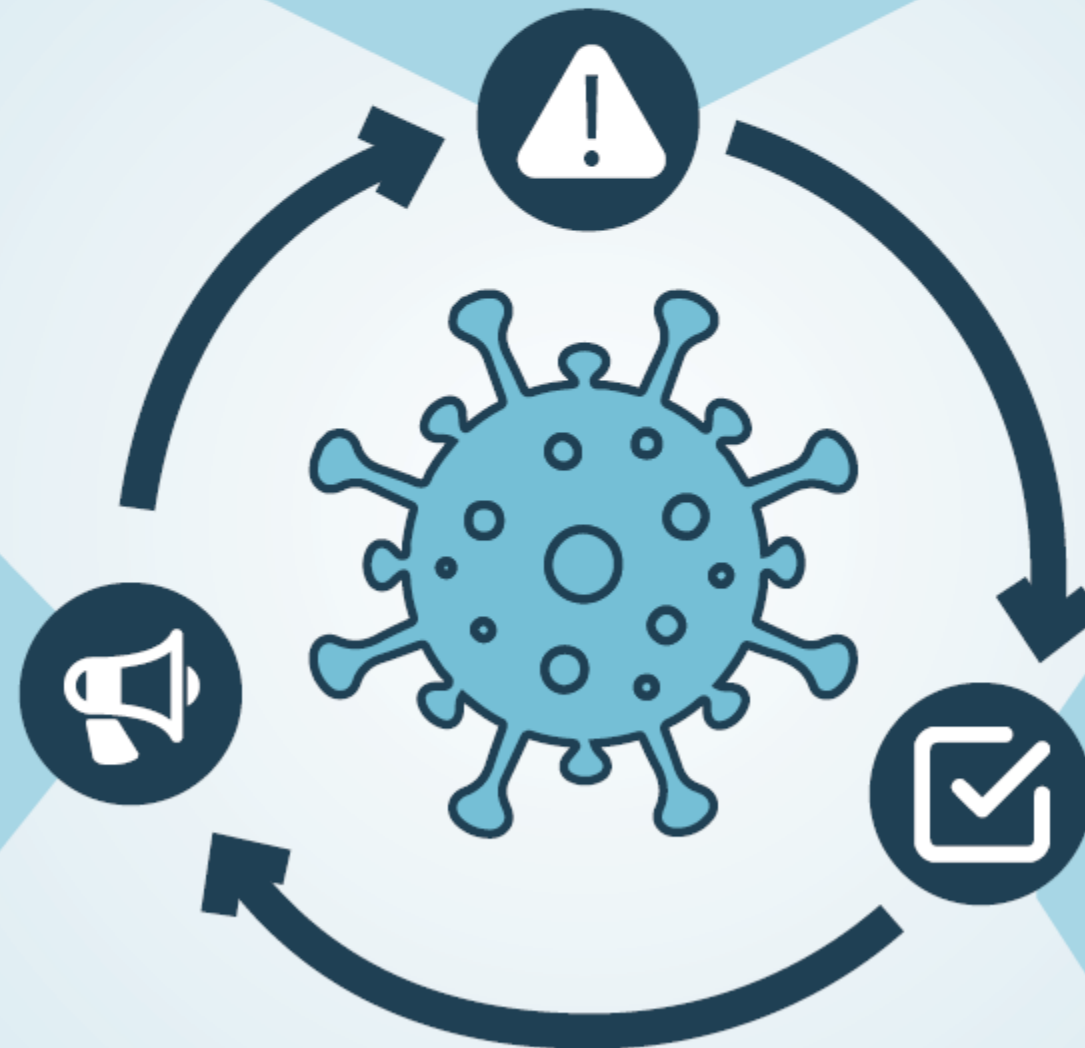


## Recovery (Post-Surge)

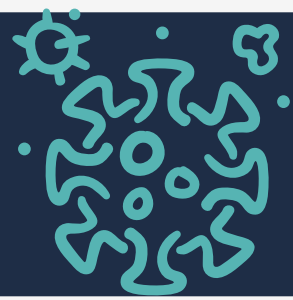
Expect to remain in this phase for longer periods as COVID-19 evolves.

Monitor conditions that may lead to surges, such as a new variant.

- Encourage vaccines to decrease COVID-19 risks.
- Strengthen community support with local stakeholders.
- Empower community members to make best choices for individual situations.







# COVID-19 Response: 2022 Activities (Quarter 1)

## CUSTOMERS

### Health Resource Advocates and School Liaisons

- Deploy 4 Regional Health Resource Advocates and 11 School Liaisons to local school districts

### Website Improvements

- Update COVID-19 Webpage to improve navigation on various COVID-19 topics
- Provide source for local Health Education resources

### Providing Health Education

- Creating educational materials for social media to include mitigation strategies, latest research, timely news
- Updating guidance documents as the situation changes

### Access to Mitigation Tools

- Deploy adult and child KN95 masks to LUG's and Libraries for community members (ensuring adequate masking for personal protection for those at risk)

## ENGAGED WORKFORCE

### Staffing Changes

- Onboard CDC Foundation staff members for contact tracing, case investigation, health education, school liaison, epidemiology

## FINANCIAL STABILITY

### Staffing Changes

- Using CDC Foundation resources to help maintain mandated services

## IMPROVED PROCESSES

### Recovery Phase, Managing Close Contacts similar to other Communicable Diseases

- Providing exposure notices in school settings
- Quarantine used in outbreak/clusters, and other specialized circumstances such as high risk settings

### Accessible Testing

- Identified LUGs and Libraries to distribute rapid antigen testing kits and waiting on supplies to re-distribute to them.
- Share information via email newsletter and social media

**Questions?**



**Are there any items that you'd like to see included in the next BOC Quarterly Meeting?**