



COVID-19 BOARD OF COMMISSIONER UPDATE

FEBRUARY 22, 2022

DATA AS OF FEBRUARY 22, 2022

EXECUTIVE SUMMARY

The following report contains COVID-19 related data from February 5, 2022 to February 18, 2022 on the 5 mitigation components Allegan County Health Department (ACHD) previously identified. Test positivity and new weekly cases have been decreasing since January 25, 2022 in Allegan County. Current reports suggest Allegan County is entering the post-surge phase for the Omicron surge.

We continue to feel encouraged about the improvement in positivity, case rates, and hospitalizations for COVID-19 in Allegan County. Across the state and nation, similar trends are being observed.

The data continues to support vaccination, particularly a full series and a booster for those eligible, to reduce the risk of symptomatic infection, hospitalization, and death.

Although we continue to feel optimistic about the current metrics in our County, please remember that COVID-19 is still present, is unpredictable and will be part of our lives for a while, perhaps even indefinitely. Continue to use layers of protection to keep yourself and your loved ones healthy. Additional surges are possible; please be prepared to take measures in the future to protect yourself, your loved ones, and your community.

The percentages of inpatient beds that are COVID-19 positive for both Grand Rapids Region and Kalamazoo Region are continuing to decrease; indicating an increase in hospital capacity. As the County moves into the post-surge recovery phase, ACHD has begun using this time to plan with community partners for our next surge with a particular focus on it being a vaccine resistant variant with higher mortality rates.

As of February 11, the [FDA](#) has postponed the review of the Pfizer COVID-19 vaccine for children 6 months through 4 years of age. Scientists will continue gathering data on third doses before they decide to move forward with the review for this age group. MDHHS previously arranged to have vaccine orders shipped on President's Day, pending authorization of this vaccine. Those shipments are on hold due to this postponement. On February 11, the Centers for Disease Control and Prevention issued important [updates](#) for administering vaccines to [moderately or severely immunocompromised](#) people who have completed their vaccine series. Those vaccinated with the Pfizer-BioNTech or Moderna vaccine should receive four doses – a three dose primary series and an additional booster. Those vaccinated with the Johnson & Johnson vaccine should receive three doses – a two dose primary series and an additional booster.

MDHHS released updated [guidance](#) around masking, in which ACHD guidance aligns with. While we are moving into the post-surge recovery, many in Allegan County have antibodies (whether vaccine or infection acquired) that provide our community with protection (although it is unclear exactly how long antibodies protect us). Individuals should assess their family and personal risk. If they choose to wear a mask then they need should wear a mask that provides better personal protection. Currently, ACHD has a limited supply of KN95 masks for adults. We are awaiting another shipment and will re-distribute to our local units of government and libraries who have decided to participate. Those locations are shared in our newsletter and social media posts. ACHD will also be requesting child KN95 masks from MDHHS to redistribute to the same locations as adult KN95 masks. It has not been determined at this time when ACHD will receive these resources.

Adaptation to COVID-19 is important with no clear end in sight to this over two-year pandemic. ACHD is updating procedures to manage COVID-19 like other communicable diseases while we are in this post-surge recovery period. Quarantine will only be required if there is an outbreak or ongoing spread in the facility. It is important to understand that based on the risk of COVID-19,

DATA AS OF FEBRUARY 22, 2021

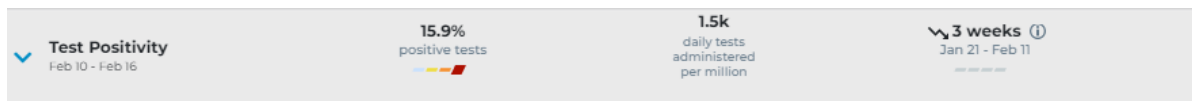
vaccine effectiveness, and impact on deaths and hospitalizations, then mitigation strategies will need to strengthen to protect public health when those metrics increase.

COVID-19 MITIGATION COMPONENTS

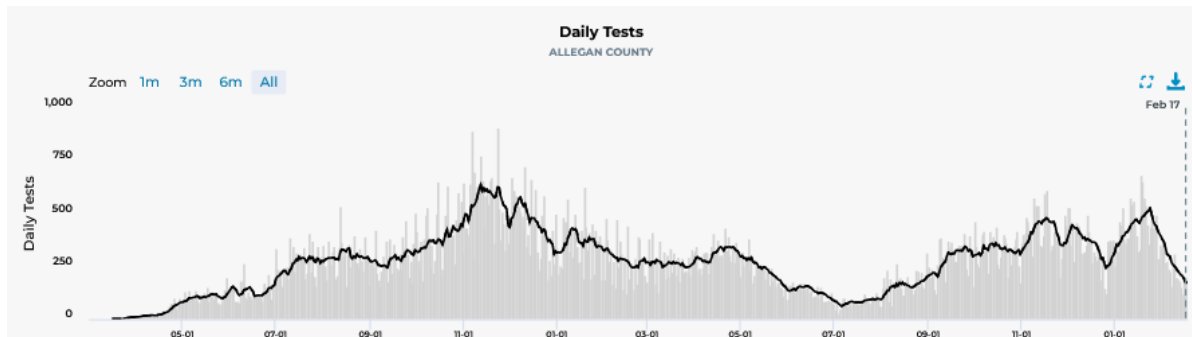
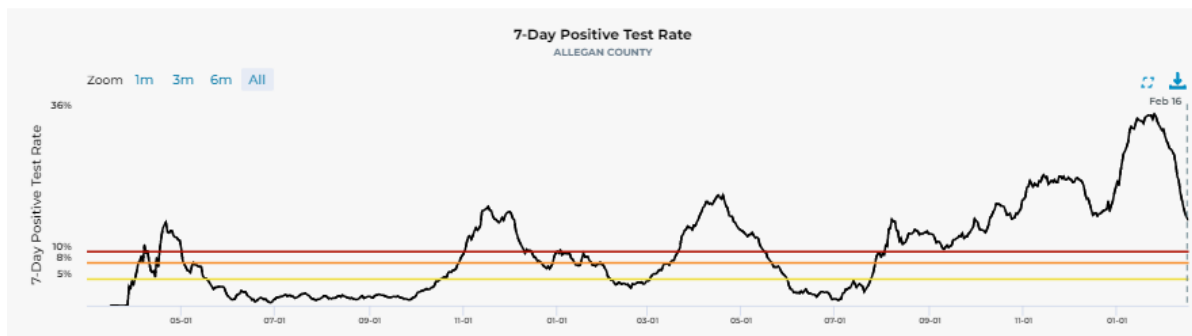


ENHANCED ABILITY TO TEST

COUNTY LEVEL DATA



The Test Positivity Rate has decreased by almost 50% in the last week in Allegheny County. Allegheny County is currently at 15.9% 7-day positivity, with 1.5 k daily administered tests per million.



TEST AVAILABILITY

On January 19, 2022, the Federal Government launched [covidtests.gov](https://www.covidtests.gov), where each household could get four free At-Home test kits. As of January 15, 2022, private health insurers are required to cover up to eight At-Home COVID-19 diagnostic tests per month for each person covered by a health plan. More information related to insurance coverage of COVID-19 At-Home test kits found [here](#). Another way individuals can order free COVID-19 tests per household is through Project ACT. To check zip code eligibility, visit [AccessCovidTests.org](https://www.AccessCovidTests.org), call 888-535-6136 or contact 211. Qualifying zip codes will receive one free kit per household, containing five tests in a kit. Zip codes are routinely being added to the eligibility list. Testing resources ebb and flow locally with demand in testing. When more virus is in the community, it is harder to get appointments locally related to demand is greater than supply/resources.

Testing resources ebb and flow locally with demand in testing. When more virus is in the community, it is harder to get appointments locally related to demand is greater than supply/resources.

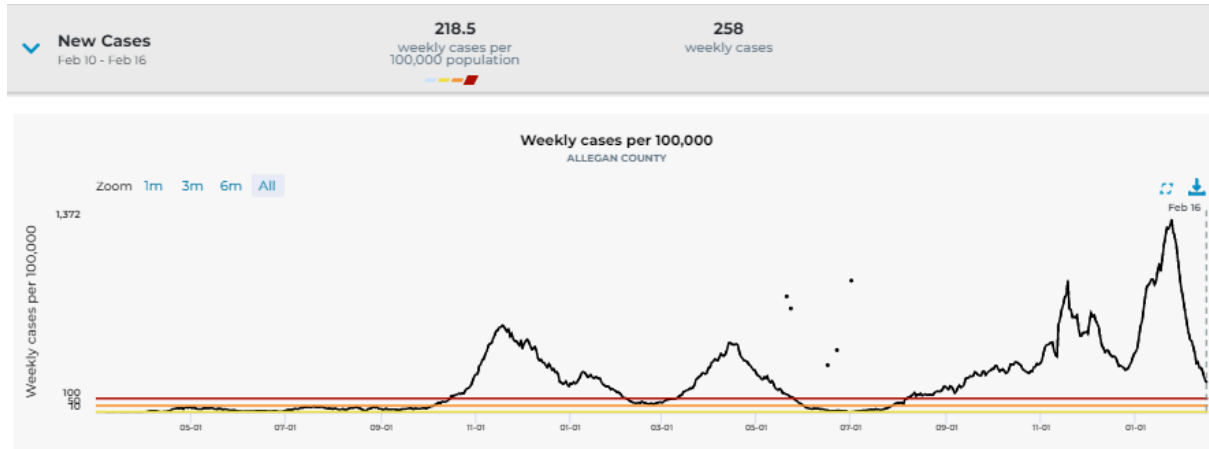
DATA AS OF FEBRUARY 22, 2022

If residents are struggling to find accessible testing, they can call ACHD at 269-673-5411 option 2 and we can help them navigate the systems.

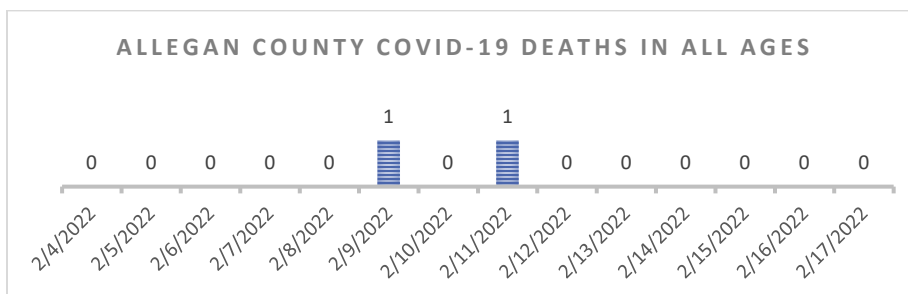
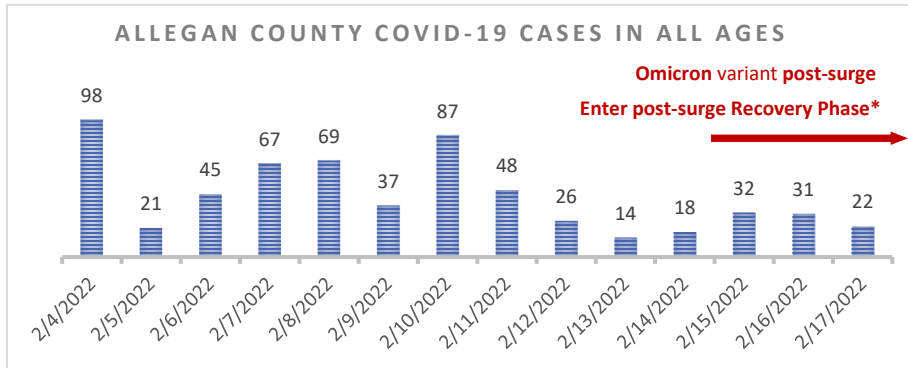
ROBUST CASE INVESTIGATION AND CONTACT TRACING

ALLEGAN COUNTY COMMUNITY TRANSMISSION LEVEL: HIGH

Allegan County has been in a high level of community transmission since early August 2021. **We have seen a significant decrease in actual cases in the last two weeks.** During the period 2/4/2022-2/16/2022, Allegan County's new case rate was 218.5 per 100,000. More than 50% decrease from the two weeks prior.



OVERVIEW OF COVID-19 CASES AND DEATHS IN THE LAST TWO WEEKS



During 02/04/2022 to 02/17/2022:

615 total cases reported via the Michigan Disease Surveillance System (MDSS) for Allegan County

The highest number of cases were reported in 30 to 39 years of age.

Youngest inpatient admission was reported in 20 to 29 years of age.

All COVID-19 deaths were reported in 80+ years of age.

Positivity rate is 35.1% from 2/3/2022 to 2/16/2022

*As of 2/16/2022, MDHHS has released an update stating that Michigan is transitioning into a post-surge recovery phase.

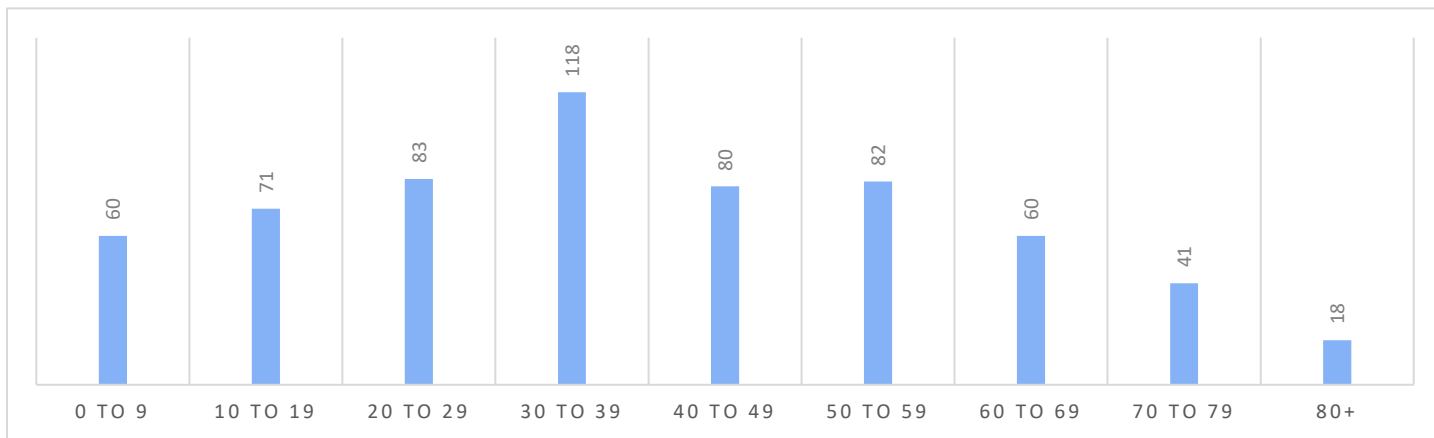
CASE INVESTIGATION

DATA AS OF FEBRUARY 22, 2022

With transmission levels and the number of cases reported in a week are decreasing, ACHD will shift its focus to investigating cases at schools and other high-risk settings. ACHD currently investigates only the following groups of individuals:

- Schools
- Long term care facilities
- Jails

CASES IN THE LAST TWO WEEKS, BY AGE GROUP (2/4/2022 – 2/17/2022)



From 2/4/2022 to 2/17/2022, Allegan County had a reported **9.1% of investigated cases were household close contacts** – meaning they lived with someone who tested positive and later tested positive themselves. Notifying close contacts helps individuals know about an exposure and allows close contacts to make decisions that are more informed on their day-to-day lives. Individual case letters being sent ended 2/1/22 unless requested by an individual.

615 cases reported in the MDSS from 2/4/2022 to 2/17/2022

LETTERS AND CLOSE CONTACTS

ACHD sends letters of exposure to individuals identified as close contacts (from prioritized cases) during the case investigation process. These letters include quarantine expectations, how long to stay at home, actions to take, and phone numbers to call if individuals have additional questions, or need further assistance. Close contact letters are no longer being mailed unless requested. Email notification is still being sent to school age children and household contacts.

WHY SHOULD PEOPLE QUARANTINE IF THEY WERE EXPOSED?

Quarantine separates and restricts the movement of people who were exposed to a contagious disease to see if they become sick. This helps people from unknowingly exposing or infecting others.

678 close contacts currently being monitored as of 2/22/2022

SCHOOLS

In October 2021, ACHD began publishing biweekly school reports to help parents, educators, and leaders make informed decisions. Due to funding levels decreasing, these reports will no longer be published after February 8, 2022.

View school report here:

- [February 8th Report](#)

SUFFICIENT HEALTH CARE CAPACITY

HOSPITALIZATIONS

Allegan County falls in the Region 5 Health Care Coalition. Given the location of the county, some community members will access hospitals in the Region 6 Health Care Coalition (Grand Rapids-Holland Region). The chart below lists the hospitals that Allegan County community members may access for COVID and non-COVID related health needs and their current capacity levels.

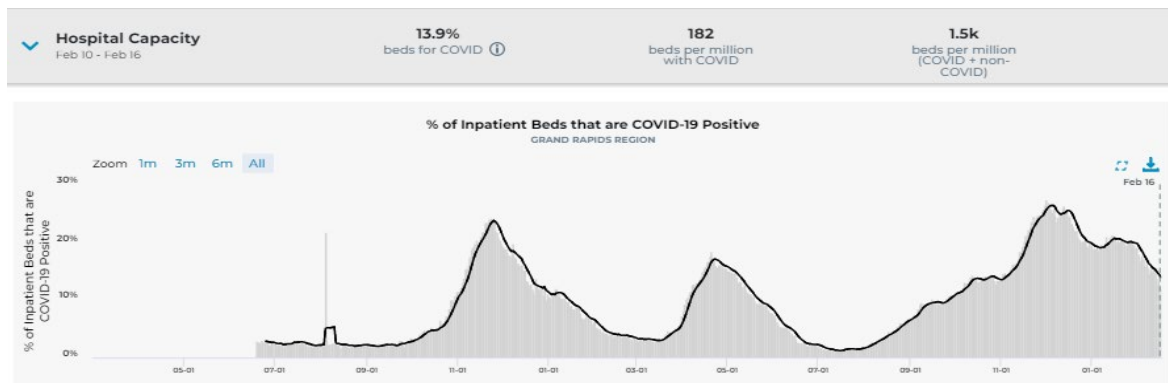
The following figures show the current percentage of inpatient beds treating COVID-19 patients, for the Grand Rapids Region (Region 6), and Kalamazoo Region (Region 5). The Grand Rapids Region has 13.9% of inpatient beds that are COVID-19 positive, and the Kalamazoo Region has 17.1% of inpatient beds that are COVID-19 positive, as of February 16, 2022.

HOSPITALS IN THE ALLEGAN COUNTY AREA

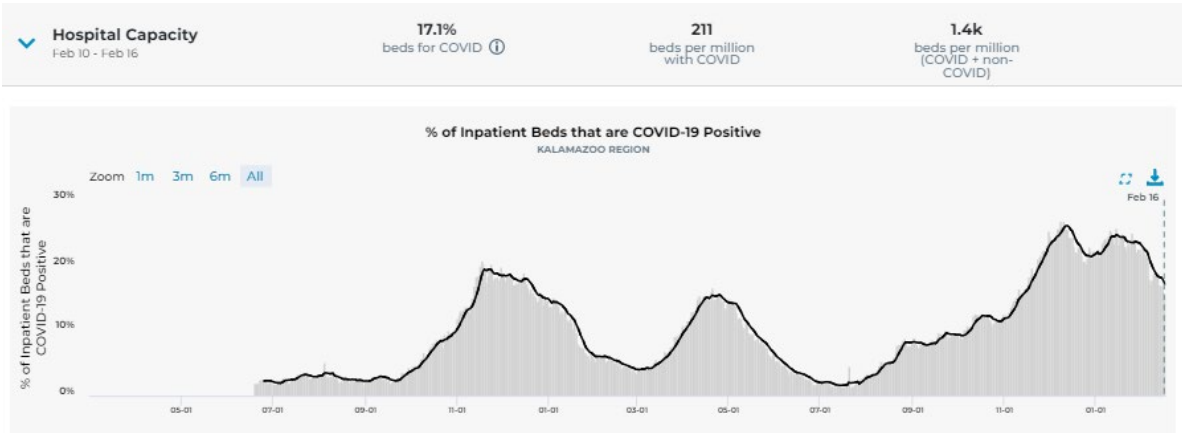
Note: Some smaller hospitals might not have ICU beds for COVID or non-COVID patients

As of 2/7/2022

Hospital	COVID-19 Patients	COVID-19 Patients in ICU	Bed Occupancy %
Ascension Borgess Allegan Hospital	1	0	16%
Ascension Borgess Hospital	30	8	73%
Ascension Borgess-Pipp Hospital	0	0	71%
Bronson Methodist Hospital	72	9	86%
Bronson South Haven	1	0	50%
Holland Community Hospital	16	1	78%
Mercy Health Mercy Campus	57	18	80%
Mercy Health St. Mary's Main Campus	40	1	94%
Metro Health Hospital	24	5	71%
Spectrum Health - Blodgett Hospital	75	11	91%
Spectrum Health - Butterworth Hospital	96	26	86%
Spectrum Health Zeeland Hospital	13	2	56%
Spectrum Helen DeVos Children's Hospital	22	0	68%

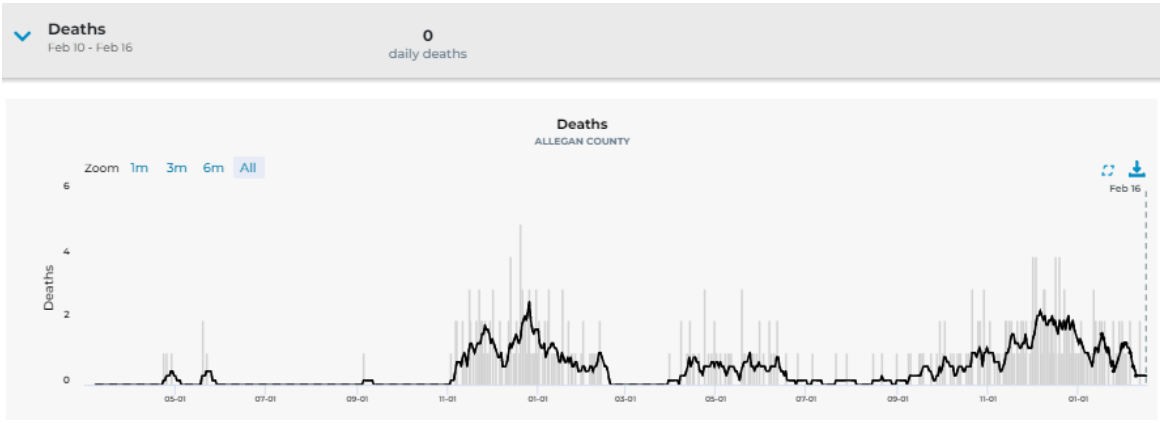


DATA AS OF FEBRUARY 22, 2022



Vaccinations are effective at reducing hospitalizations from COVID-19. In Allegan County, 82.5% of the hospitalizations from 1/1/21 to 1/28/22 have been in those that are unvaccinated.

DEATHS



Similarly, vaccinations are effective at preventing deaths from COVID-19 in Allegan County. From 1/1/21 to 1/28/22, 85.7% of COVID-19 deaths have been in unvaccinated individuals.

BEST PRACTICES

SCHOOLS

ACHD meets biweekly with School Superintendents to discuss COVID-19 updates and provide technical assistance on public health related items for schools.

Since the beginning of the school year, ACHD has identified **14 outbreaks or clusters in schools** (as of 2/18/22). No new school outbreaks have been identified since 2/3/22.

School Quarantine Guidance can be found [here](#). ACHD posted new School Quarantine Guidance on 1/12/2022 to align with new isolation and quarantine guidance from CDC.

On February 16, Michigan statewide masking policies lifted. Some districts may continue to require masking in schools.

BUSINESSES

Since the start of the pandemic, ACHD has designated an individual to work with all businesses in Allegan County to provide technical assistance as needed when cases are identified in the workplace. As we transition to mandated services, ACHD will only be able to offer assistance when there is a cluster or outbreak. When a business calls, our front desk support staff will ensure they are connected with the CDC, MDHHS, or local health education information.

Worked with 7 Local Businesses from 2/5/22 – 2/18/22 on technical assistance including case investigation and contact tracing

COMMUNICATIONS

COVID Health Education has been a prioritized effort in this response. There is a lot of information out there related to this response, including misinformation that is a challenge for Public Health to combat.

The following are metrics related to communication efforts from 2/7/2022 – 2/18/2022

- 7 social media posts
- 1 community update
- 1 school report
- 1 newsletter

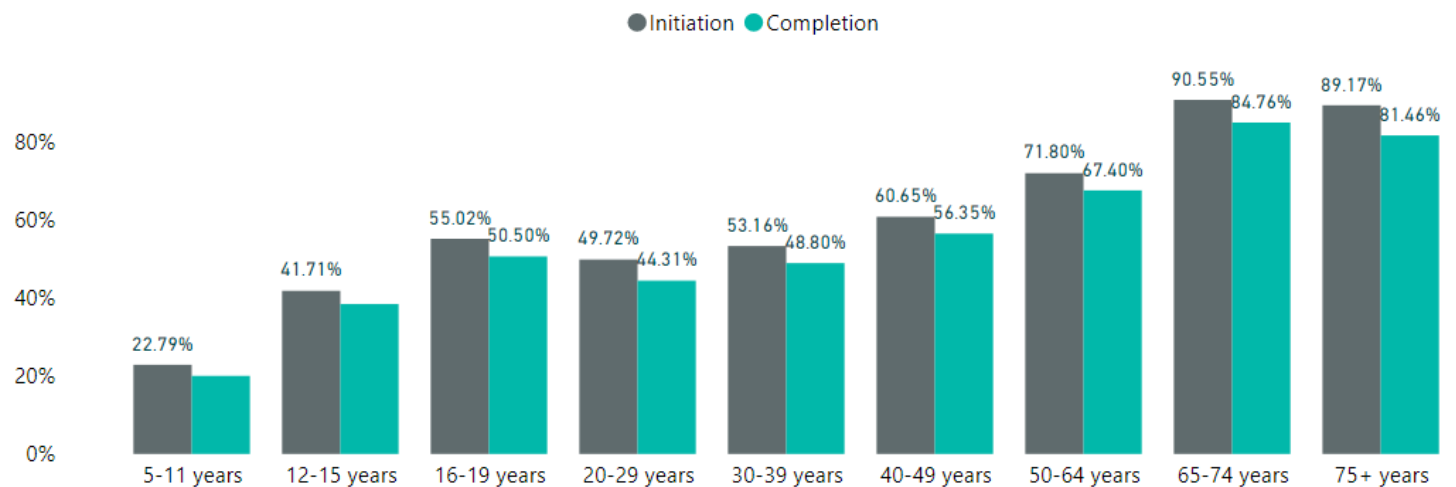
COMMUNITY VACCINATION/HERD IMMUNITY/TREATMENT

COVERAGE

Due to the emergence of new variants, immunity from prior infection is more unpredictable and wanes faster than immunity from vaccination. It is important to get boosters if you are eligible.

COVID-19 VACCINE COVERAGE BY AGE GROUP

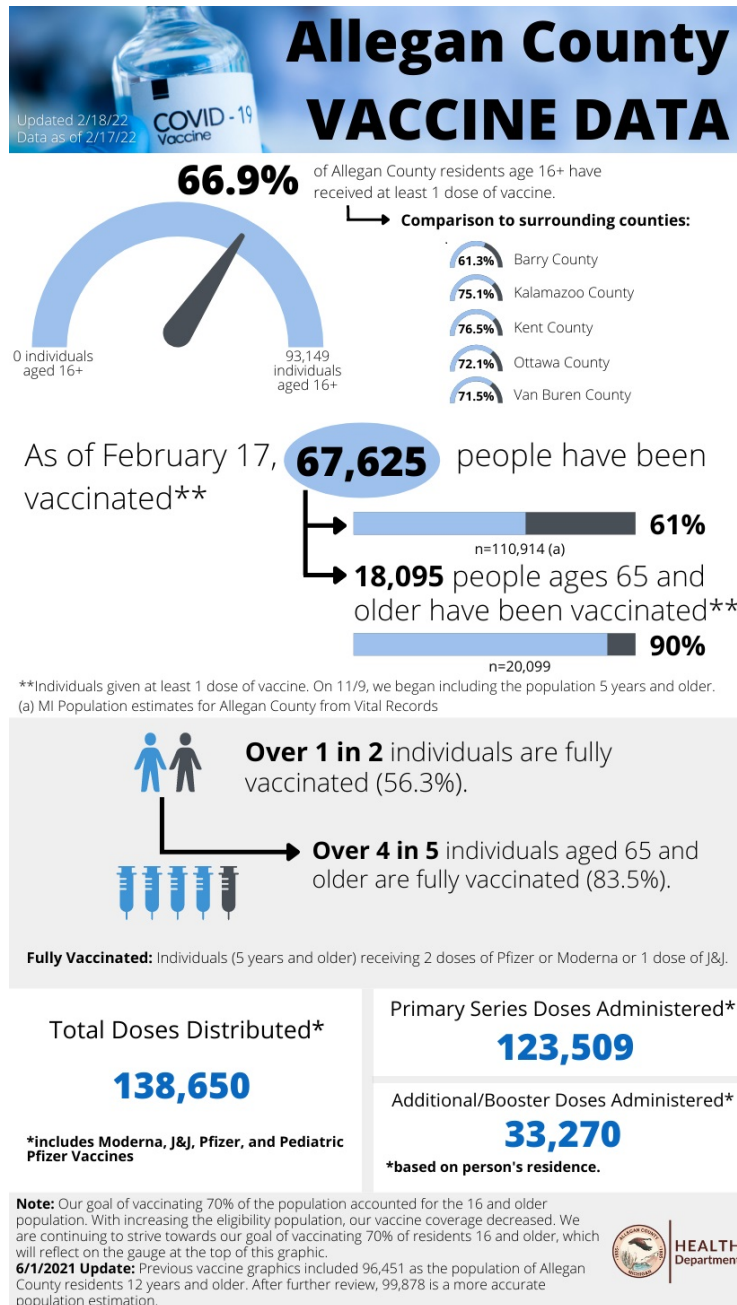
As of 2/17/2022



VACCINE AVAILABILITY

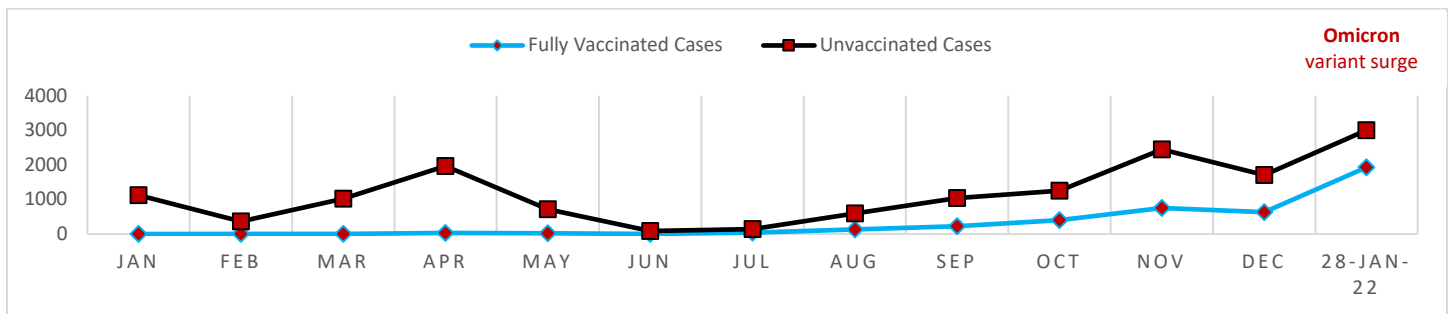
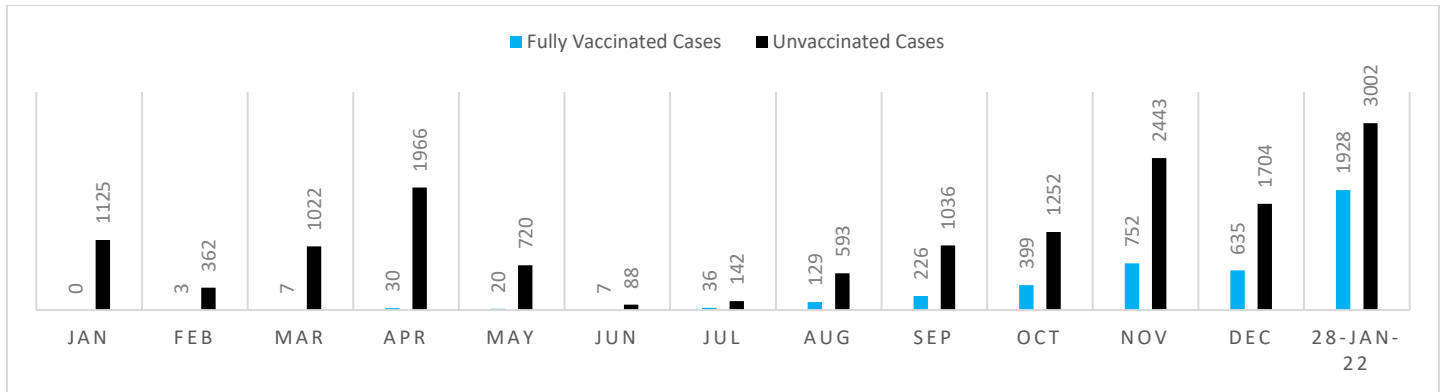
DATA AS OF FEBRUARY 22, 2022

Vaccine availability remains high as pharmacies, doctor’s offices, and health care systems are administering vaccines. ACHD will have vaccine appointments available for vulnerable populations or children in the Vaccine for Children program.



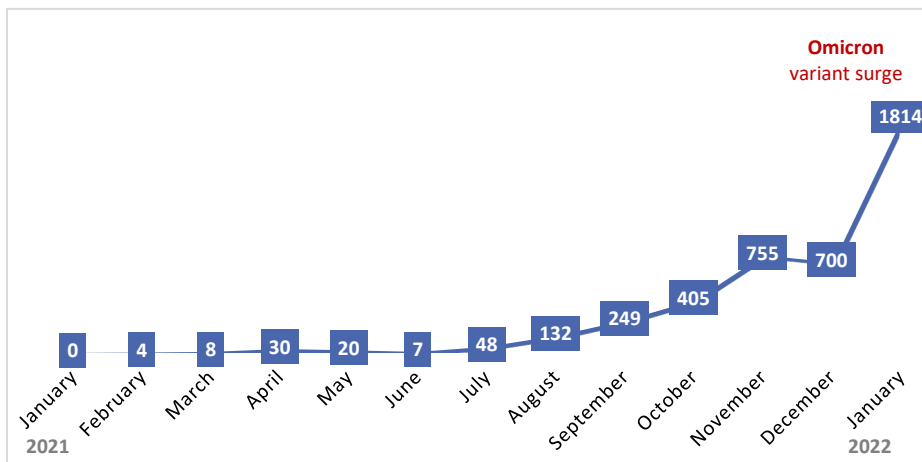
EFFECTIVENESS

Alleghen County Fully Vaccinated and Unvaccinated COVID-19 Cases by Referral Dates 01/01/2021 to 01/28/2022. Note: Latest breakthrough data update was as of 1/28/22, which was included in the previous school community presentation.



When comparing fully vaccinated cases to unvaccinated cases, unvaccinated cases are more likely to occur, even though fully vaccinated cases have increased since July 2021. As you can see in the charts, the unvaccinated (black line) have more cases compared to the fully vaccinated (blue line).

OVERVIEW OF ALLEGAN COUNTY COVID-19 BREAKTHROUGH CASES AS OF JANUARY 28, 2022



As of January 28, 2022:
 There were 21.3% fully vaccinated cases reported in MDSS by referral, onset, diagnosis, or specimen collection dates.
 All pediatric breakthrough cases were reported in ages 5 and over.
 Youngest fully vaccinated inpatient admission was reported in the 20 to 29 age group.
 Youngest fully vaccinated death was reported in the 50 to 59 age group.

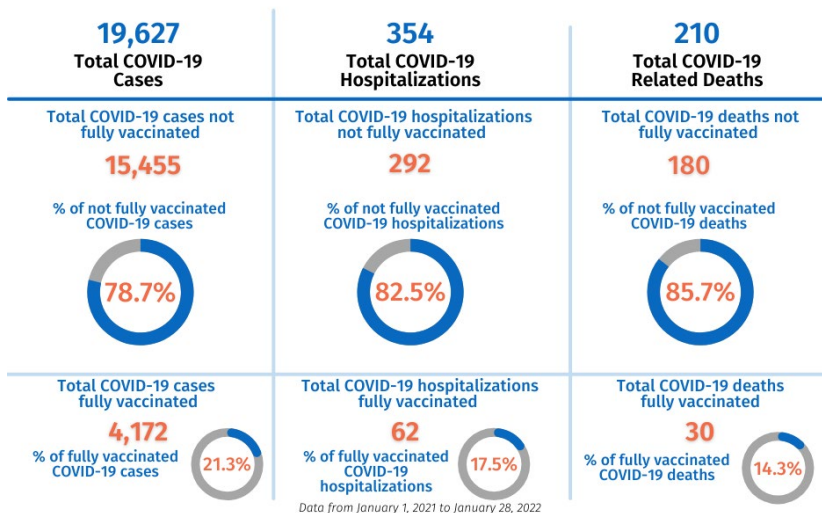
UNDERSTANDING BREAKTHROUGH CASES

Breakthrough cases are those persons who contract COVID-19 despite being fully vaccinated for the disease. They are more likely to occur in those who are older, those who have compromised immune systems, and those who are more exposed to COVID-19 (such as at work or school). It is important to understand that the chances that an unvaccinated person and a vaccinated person catching COVID-19 from an exposure are not the same. Vaccinated people are less likely to contract the disease, and are less infectious if they do contract it. Among breakthrough cases, vaccines ensure less infectious viral particles for a shorter period.

DATA AS OF FEBRUARY 22, 2022



Since January 2021, there have been:



SOURCES

- <https://mistartmap.info/cdc-indicators>
- HONU Allegan County Testing Reports
- Allegan County Health Department Facebook page
- www.michigan.gov/covidvaccine
- Michigan Disease Surveillance System (MDSS)
- [FDA](https://www.fda.gov/)
- Michigan Department of Health and Human Services (MDHHS) Breakthrough Cases Data File
- CDC