



HEALTH Department

QUARTERLY UPDATE

- Angelique Joynes, Health Officer, MPH, RN
- Randy Rapp, Environmental Health Services Manager, RS
- Lisa Letts, Personal Health Services Manager, BSN, RN
- Lindsay Maunz, Planning and Preparedness Manager, MPH
- Rosemary Graham, Resource Recovery Coordinator

Quarter 2 Presentation
May 26, 2022

Today's Takeaways:

1. Discuss 2022 County Health Rankings and Michigan Association for Local Public Health (MALPH) sponsored Annual Meeting with elected representatives
2. Update on ACHD Division's Priority Activities and Emerging Concerns for 2022
3. Release of 2021 Annual Report
4. Answer questions and elicit feedback from the Board of Commissioners



HEALTH
Department



ADMINISTRATION

- Supports the department as a whole
- Issues Advisories, Cease and Desist letters, etc.
- Collect and evaluate data needed to support efficient public health service delivery and share data with the community

RESOURCE RECOVERY

- Coordinate Resource Recovery Program for participating LUG's
- Facilitate Solid Waste Planning Committee

PERSONAL HEALTH

- Provides services such as STI/HIV, Immunizations, Lead, Hearing and Vision, Communicable Disease, and Children's Special Health Care Services (CSHCS)
- Provides education, in-services, and on-site inspections for medical providers who participate in Vaccine for Children (VFC) and Adult Vaccine Program (AVP)
 - Safe storage and handling
 - Inventory management
 - Patient education

ENVIRONMENTAL HEALTH

- Provides services such as well and septic permits, soil erosion permits, restaurant inspections, ground water contamination surveillance, beach sampling, etc.
- Identifies opportunities for environmental health education and work with Planning and Preparedness to develop materials

PLANNING AND PREPAREDNESS

- Provides services such as community health needs assessment and community health improvement plans, emergency preparedness, and other planning and health education services that improve community health and quality of life in Allegan County.
- Interacts with the community through social media and media interviews.



HEALTH Department

Allegan County Health Department: Organization Chart

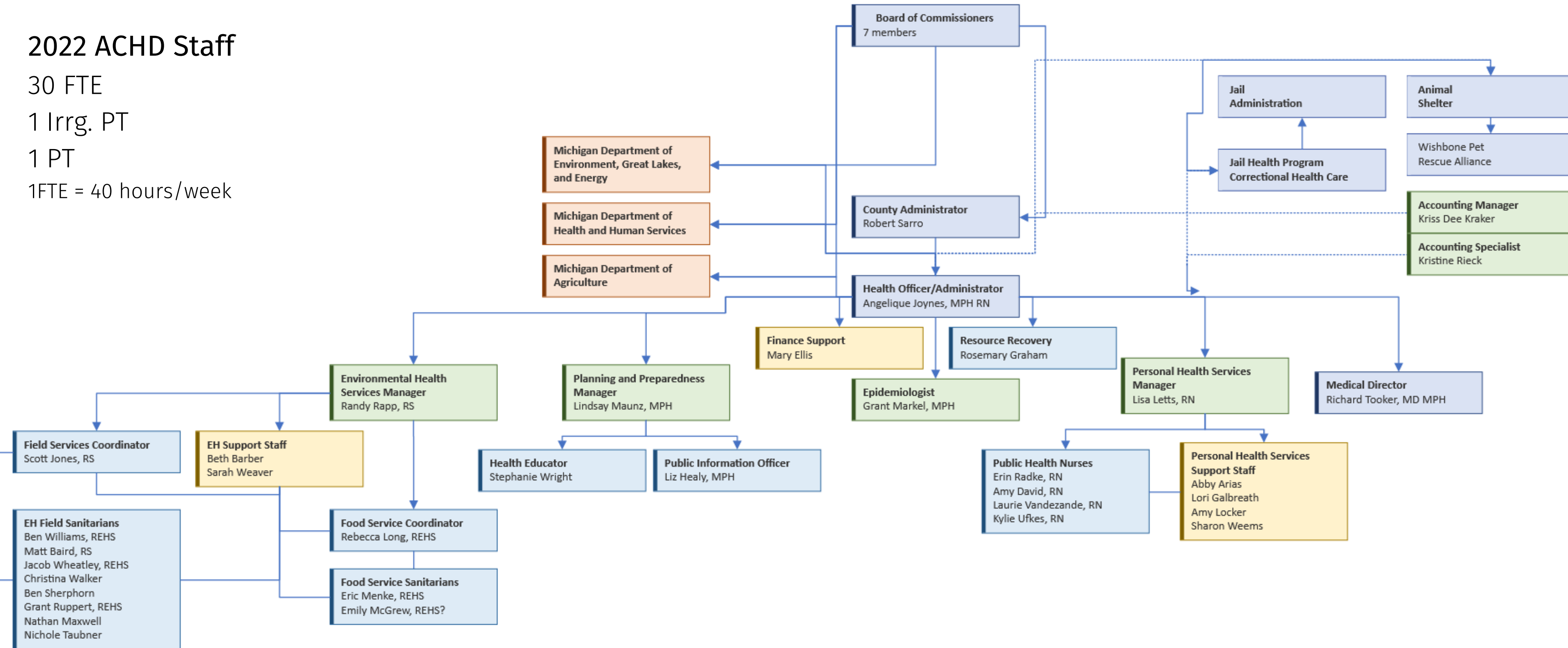
2022 ACHD Staff

30 FTE

1 Irrg. PT

1 PT

1FTE = 40 hours/week





Finance: 2023 Budget Narrative



HEALTH
Department

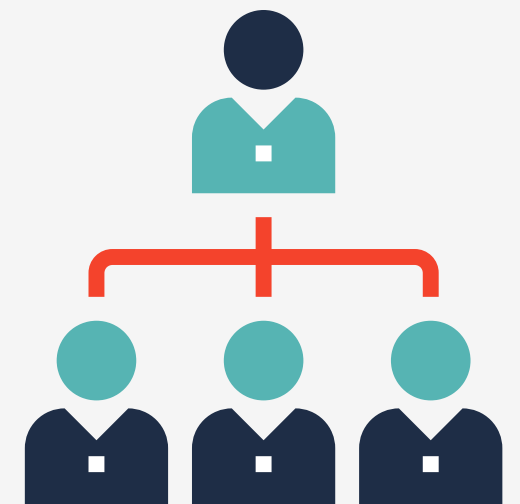
Changes in the 2023 Budget:

- Seeking a Personal Health Coordinator position similar to what EH has for field and food
 - When evaluating resources needed for reportable communicable disease investigations, we currently have CDCF staff who fill this gap and will be a part of the Communicable Disease team, until July 2023
- Anticipate more communicable disease staff for 2024, unless COVID-19 becomes endemic and/or is no longer a reportable communicable disease
- More team members traveling and attending trainings as we move out of COVID-19 (expenditures for 2023 will more accurately align with what has been previously budgeted in those line items)



Expenditure increases related to inflation:

- Gas (travel)
- Maintenance and subscription tools



Revenue changes:

- Immunization fees
- Anticipate a potential drop in real estate (less building development)
 - Will influence the revenue collected from fees



Finance: 2022 Activities



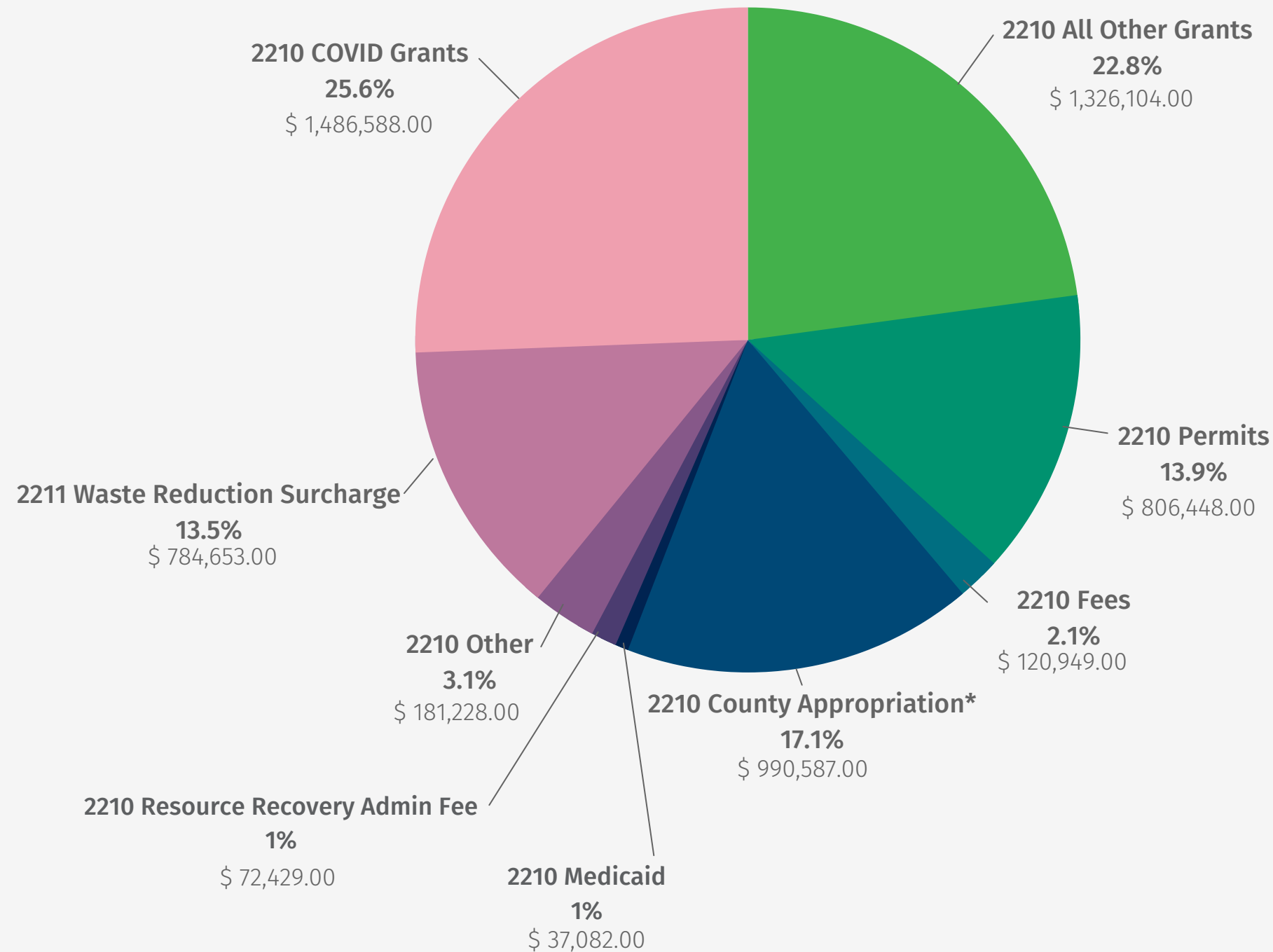
HEALTH
Department



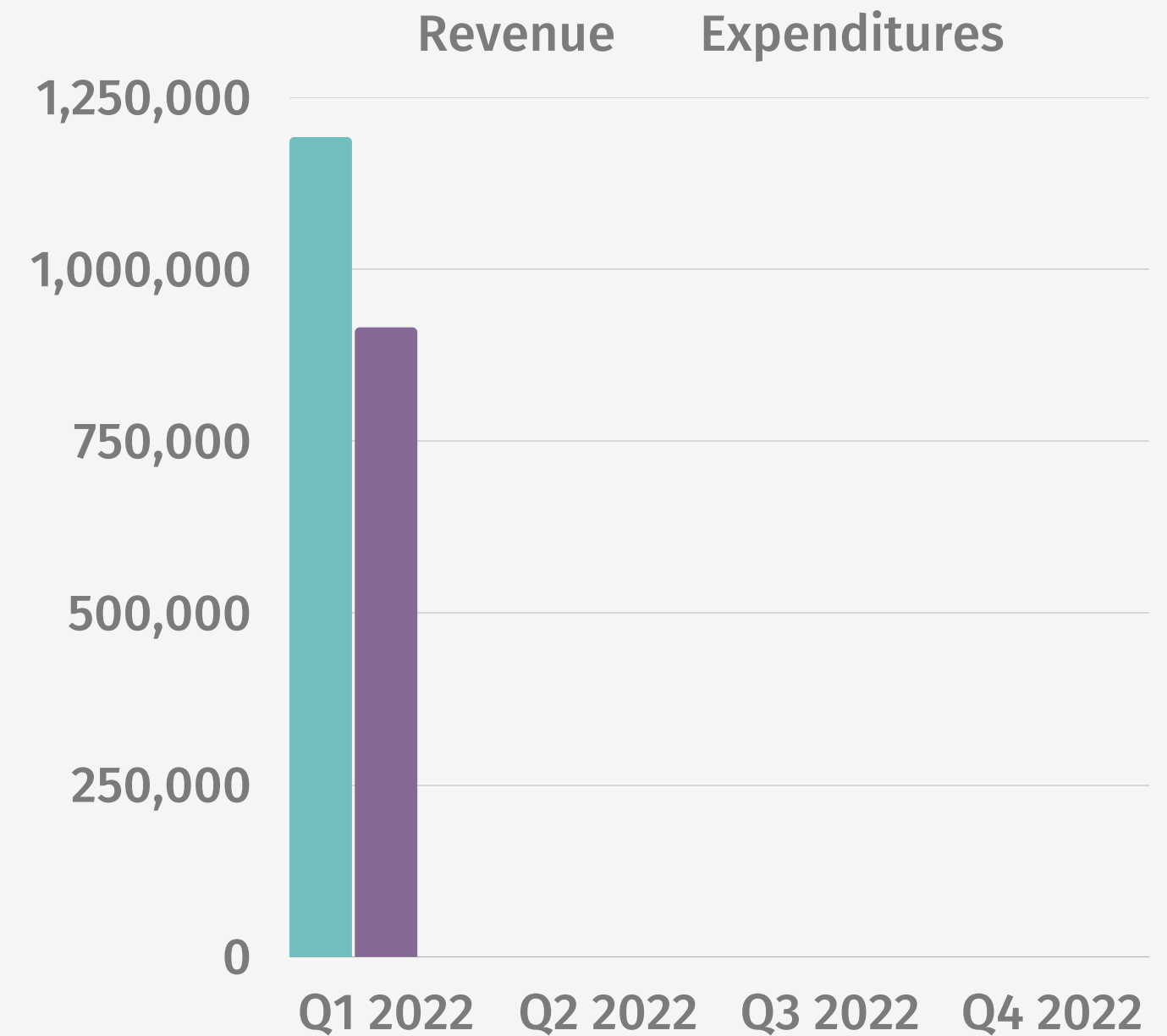
2022 BUDGETED REVENUE

TOTAL BUDGETED
REVENUE 2210:
\$5,021,415.00

TOTAL BUDGETED
REVENUE 2211:
\$784,653.00



REVENUE & EXPENDITURES BY QUARTER





2021 Annual Report



HEALTH
Department

The year 2021 proved to be a challenging yet rewarding time for Public Health

- Focus on community partnership and cooperation carried into 2021 with COVID-19 mitigation
- Rolled out the largest deployment of a vaccine in our history
- Continued to respond to a pandemic, despite a divided community on what a proper response should be

Challenges

- Spread of misinformation
- Rapid change of information, and guidance, which was difficult to keep up with
- At the beginning of the vaccine deployment, our demand was high, but the supply of vaccines was low

Public Health Wins

- Public Safety, Emergency Management, and Allegan County Volunteers provided resources for the historic vaccine deployment events in the community. Together, we were able to fully vaccinate 54.2% of our population

Looking ahead

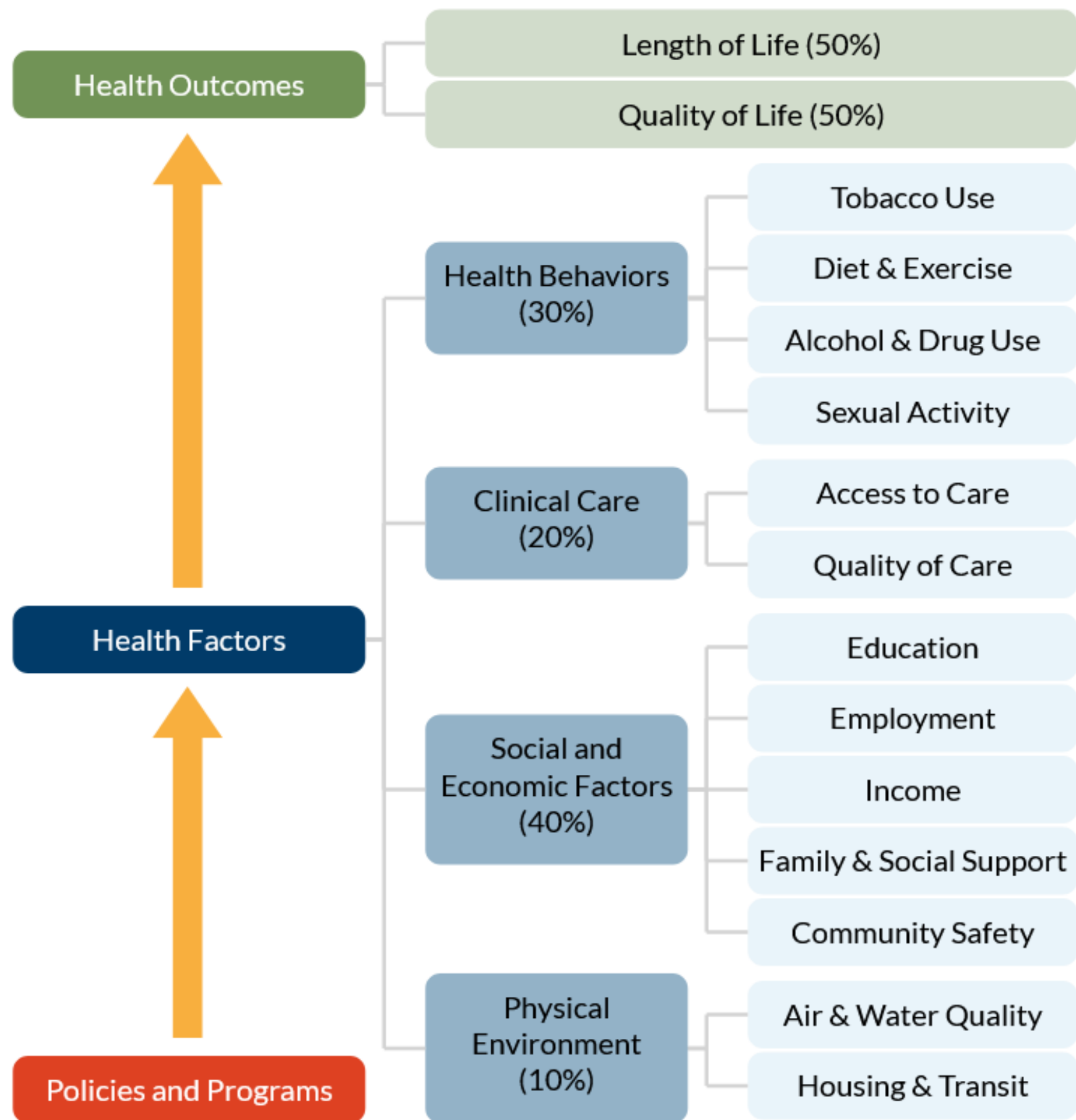
- Work together respectfully to build resilience within our community
- Maintain communication and collaboration with the partnerships formed during the pandemic

The 2021 Annual Report will be publicly released after this meeting on our website and sent out to our newsletter subscribers. Printed copies are available upon request.





Allegan County Health Rankings: 2022 Data Released








- The County Health Rankings are based on a model of community health that emphasizes the many factors that influence how long and how well we live.
- The Rankings use more than 30 measures that help communities understand how healthy their residents are today (health outcomes) and what will impact their health in the future (health factors).
- Learn more about the model by visiting <https://bit.ly/3Na8jW1>





Allegan County Health Rankings: 2022 Data Released



PERFORMANCE MEASURES FOR CLINICAL CARE: WHERE WE'RE AT

	 2019	 2022	 MI 2022	 2022
 PRIMARY CARE PHYSICIANS	3,850:1	4,540:1	1,250:1	1,010:1
DENTISTS	3,420:1	2,970:1	1,290:1	1,210:1
MENTAL HEALTH PROVIDERS	1,270:1	1,050:1	330:1	250:1
PREVENTABLE HOSPITAL STAYS	3,570	3,149	4,357	2,233
UNINSURED	6%	7%	7%	6%



Uninsured

- **Data source:** 2021 data from the U.S. Census Bureau’s Small Area Health Insurance Estimates
- **What measure means:** Percentage of the population under age 65 without health insurance
- **Allegan County:** Increased from 6% in 2019, to 7% (1% increase) 
 - Equal when compared to the overall number in Michigan 



Preventable Hospital Stays

- **Data source:** 2019 data from the Centers for Medicare & Medicaid Services Office of Minority Health’s Mapping Medicare Disparities Tool (MMD)
- **What measure means:** Rate of hospital stays for ambulatory-care sensitive conditions per 100,00 Medicare enrollees
- **Allegan County:** Decreased from 3,570 in 2019, to 3,149 in 2022 (decreased 421) 
 - Lower when compared to the overall state number of 4,357 (1,208 less) 

Mental Health Providers

- **Data source:** 2021 data from the CMS, National Provider Identification (NPI)
- **What measure means:** This is the ratio of the population to mental health providers per 100,000
- **Allegan County:** Decreased from 1,270:1 in 2019, to 1,050:1 in 2022 
 - Higher than the overall number for Michigan which is 330:1 

Primary Care Providers

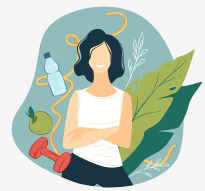
- **Data source:** 2019 data from the Area Health Resource File/American Medical Association
- **What measure means:** This is a ratio of the population to primary care physicians per 100,000
- **Allegan County:** Increased from 3,850:1 in 2019 to 4,540:1 in 2022 
 - Higher than the overall number for Michigan which is 1,270:1 



HEALTH Department

Allegan County Health Rankings: 2022 Data Released

PERFORMANCE MEASURES FOR HEALTH BEHAVIORS: WHERE WE'RE AT



2019
18%



2022
19%



MI 2022
20%



2022
15%

ADULT SMOKING

ADULT OBESITY

31%*

36%

36%

30%

PHYSICAL INACTIVITY

20%*

28%

25%

23%

ACCESS TO EXERCISE OPPORTUNITIES

73%



46%

77%



86%

*: Data should not be compared to 2022



Adult Smoking

- Data source: 2019 data from the Behavioral Risk Factor Surveillance System
- What measure means: Percentage of adults who are current smokers (age-adjusted)
- Allegan County: Increased from 18% in 2019 to 19% in 2022 
 - Lower than the overall average for Michigan of 20% 



Adult Obesity

- Data source: 2019 data from the BRFSS
- What measure means: Percentage of the adult population that reports a BMI greater than or equal to 30 kg/m2 (age-adjusted)
- Allegan County: Increased from 31% in 2019, to 36% this year 
 - Equal when compared to the overall number in Michigan 

Physical Inactivity

- Data source: 2019 data from the BRFSS
- What measure means: Percentage of adults reporting no leisure-time activities (age-adjusted)
- Allegan County: Increased from 20% in 2019, to 28% in 2022 
 - 3% higher than the Michigan overall of 25% 

Access to Exercise Opportunities

- Data source: 2010 and 2021 data used from ArcGIS which is a combined data file from Business Analyst, ESRI, YMCA, & US Census Tigerline Files
- What measure means: Percentage of population with adequate access to locations for physical activity
- Allegan County: Decreased from 73% in 2019, to 46% in 2022 
 - Below the state average of 77% 



HEALTH Department

Allegan County Health Rankings: 2022 Data Released

PERFORMANCE MEASURES FOR QUALITY OF LIFE: WHERE WE'RE AT



2019



2022



MI 2022



2022

POOR OR FAIR HEALTH

15%

18%

18%

15%

POOR MENTAL HEALTH DAYS

3.9

5.1

5.2

4.0

DIABETES PREVALENCE

10%

9%

10%

8%

Poor Or Fair Health

- Data source: 2019 data from the BRFSS
- What measure means: Percentage of adults reporting fair or poor health (age-adjusted)
- Allegan County: Increased from 15% in 2019 to 18% in 2022
- Equal to the state average (18%)

Poor Mental Health Days

- Data source: 2019 data from the BRFSS
- What measure means: Average number of mentally unhealthy days reported in past 30 days (age-adjusted)
- Allegan County: Increased from 3.9 in 2019, to 5.1 in 2022
- Lower than the state average of 5.2



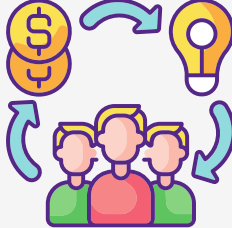
Diabetes Prevalence

- Data source: 2017 data from United States Diabetes Surveillance System (BRFSS and US Census Bureau's Population Estimates Program)
- What measure means: Percentage of adults aged 20 and above diagnosed with diabetes
- Allegan County: Decreased from 10% in 2019, to 9% in 2022
- Lower than the state's overall average of 10%





Allegan County Health Rankings: 2022 Data Released



PERFORMANCE MEASURES FOR SOCIAL & ECONOMIC FACTORS: WHERE WE'RE AT

	 2019	 2022	 MI 2022	 2022
 HIGH SCHOOL GRADUATION	87%	91%	91%	94%
SOME COLLEGE	57%	59%	69%	74%
UNEMPLOYMENT	3.9%	7.3%	9.9%	4%
CHILDREN IN POVERTY	13%	8%	17%	9%



High School Graduation/Completion

- **Data source:** 2016-2020 (5-year average) data from the American Community Survey
- **What measure means:** Percentage of population ages 25 and older that completed high school
- **Allegan County:** Increased from 87% in 2019, to 91% in 2022 
 - Equal to the state average (91%) 

Some College

- **Data source:** 2016-2020 (5-year average) data from the American Community Survey
- **What measure means:** Percentage of adults ages 25-44 with some post-secondary education
- **Allegan County:** Increased from 57% in 2019, to 59% in 2022 
 - Below the state average of 69% 

Unemployment

- **Data source:** 2020 data from the Bureau of Labor Statistics
- **What measure means:** Percentage of population 16 and older unemployed but seeking work
- **Allegan County:** We increased from 3.9% in 2019, to 7.3% in 2022 
 - Below the state average of 9.9% 

Children in Poverty

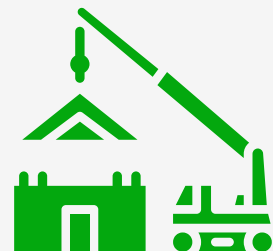
- **Data source:** 2020 data from the Small Area Income and Poverty Estimates
- **What measure means:** Percentage of population under age 18 in poverty
- **Allegan County:** Decreased from 13% in 2019, to 8% in 2022 
 - Below the state average of 17% 



Allegan County Health Rankings: 2022 Data Released

PERFORMANCE MEASURES FOR PHYSICAL ENVIRONMENT:

WHERE WE'RE AT



2019



2022



MI 2022



2022

AIR POLLUTION

11.0

7.6

7.4

5.9

DRINKING WATER VIOLATIONS

YES

YES

-

-

SEVERE HOUSING PROBLEMS

12%

11%

14%

9%

SEVERE HOUSING COST BURDEN

9%

7%

12%

7%

BROADBAND ACCESS

N/A

85%


84%

88%



Air Pollution

- Data source: 2018 Environmental Public Health Tracking Network
- What measure means: Average daily density of fine particulate matter in micrograms per cubic meter (PM2.5)
- Allegan County: Decreased from 11.0 in 2012 to 7.6 in 2022 
 - Higher than Michigan overall 



Drinking-Water Violations

- Data source: 2020 data from Safe Drinking Water Information System (SDWIS)
- What measure means: "Yes" or "No" indicating if there was the presence of a violation
- Allegan County: "Yes for both years" 


Severe Housing Problems

- Data source: 2014-2018 data from Comprehensive Housing Affordability Strategy (CHAS)
- What measure means: Percentage of households with at least 1 of 4 housing problems (overcrowding, high housing costs, lack of kitchen facilities, lack of plumbing facilities)
- Allegan County: Decreased from 12% in 2019, to 11% in 2022. 
 - Below the state average of 14% 

Severe Housing Cost Burden

- Data source: 2016-2020 data (5-year estimate) from American Community Survey
- What measure means: Percentage of households that spend 50% or more of their household income on housing
- Allegan County: Decreased from 9% in 2019, to 7% in 2022 
 - Below the state average of 12% 

Broadband Access

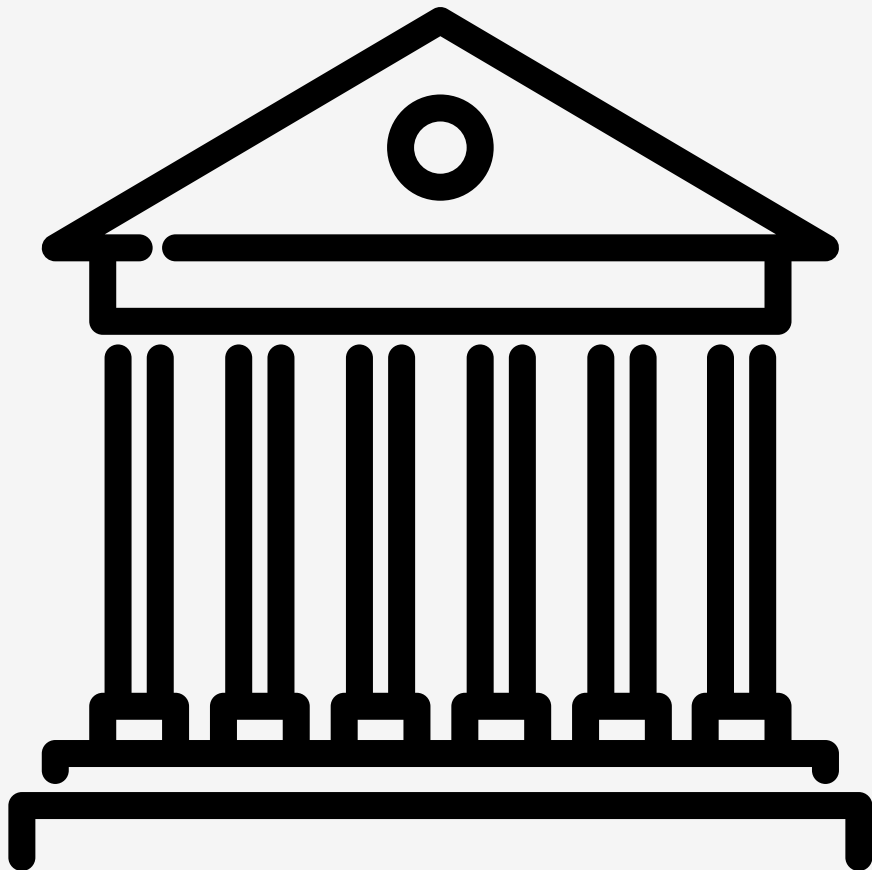
- Data source: 2016-2020 data (5-year estimate) from American Community Survey
- What measure means: Percentage of households with broadband internet
- Allegan County: Data for 2019 is unavailable
 - Slightly above the state average (84%) 



HEALTH
Department

Michigan Association for Local Public Health (MALPH) sponsored Annual Meeting with elected representatives (April 13, 2022)

- The Personal Health Services Manager, on behalf of the Health Officer (due to medical leave), met with the three Allegan County elected representatives in Lansing.
 - The Quarter 1 Public Health Update (from the February 24 BOC meeting) was shared
 - Provided high-level information on access to care, communicable diseases/emerging illnesses, environmental health emerging issues, and public health planning and preparedness
 - Encouraged them to provide us with direct feedback on concerns or feedback they may have as our local legislators



ADMINISTRATION

39,214

Total Public Health Services Provided (excluding jail health, MCDC, and animal shelter)



Advisories & Recommendations issued (quarantine, isolation, water advisory, exposure letters)



Inquiries responded to



of those who filled out the Customer Satisfaction survey for ACHD services responded "Agree or Strongly Agree" to being satisfied with the services they received (n=38)



28

Learning and Growth meetings with team members completed

164.5

Hours spent on Professional Development by team members

30

Full time team members

1

Irregular part time employee

1

Part time team member

1,410

Hours pf PTO taken by team members

10

Contracted team members

- Hours spent on Jail Health per service area: **0**
- Hours spent on Animal Shelter per service area: **14.5**
- Hours spent on CHNA and CHIP, HACC: **40**
- Hours spent on Learning and Growth: **41.5**
- Travel time (hours): **271.5**
- Team meetings (hours): **175.25**
- Emergency Preparedness Activities (hours): **33**
- Hours spent in Strategic planning (WIO) activities: **155.25**
- Quality Assurance Activities (hours): **29**
- Continuous Improvement Activities (hours): **40**
- Hours spent on Policies and Procedures (SOW): **9**
- Percentage of field services meeting 14 business day turnaround goal: **99%**
- Percentage of field services meeting 5 day communication benchmark: **99%**



Administration: 2022 Activities (Quarter 1)

CUSTOMERS

Community Health Needs Assessment and Community Health Improvement Plan (CHNA/CHIP)

- MET: Community Health Survey sent out January 25, 2022
 - Closes March 1, 2022
 - Ascension Borgess Allegan and United Way collaboration
- MET: Data compiled and shared with stakeholders by March 4, 2022
- ONGOING: CHNA Report to be shared with Ascension Borgess Allegan's Board, United Way's, and Board of Commissioners by June 30, 2022
- ONGOING: CHIP timeline developed by June 30, 2022

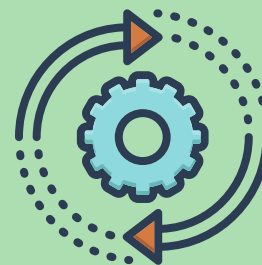
TAKE SURVEY



FINANCIAL STABILITY

Transition to Mandated Services

- MET: Using other resources, such as CDC Foundation staffing to supplement COVID-19 response



Optimize Grant Funding to Minimize County funding

- ONGOING: Reviewing Financial Statement Reports (FSRs) on a regular basis
- ONGOING: Reallocation of essential local public health services funding as needed to maximize utilization of all grant funding

ENGAGED WORKFORCE

Workforce Development Plan

- MET: Updated 2022 Workforce Development Plan
- MET: Ensuring staff are getting updated on training and requirements to provide their public health services

Supporting Employees with Pandemic and Compassion Fatigue -- Continuous work, Met

- ONGOING: Assessing individual concerns in L&G sessions
- ONGOING: Continue to promote and bring opportunities that promote employee wellness



IMPROVED PROCESSES

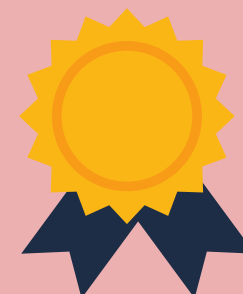
CI Project: Contracts/Agreements

- Public Health has over 150 agreements (MOUs, Contracts, etc.) to manage with Project Management. Working collaboratively on identifying efficiencies for each type of agreement.
 - MET: Activities include:
 - Compile list of all types of agreements
 - Review current process of each agreement
 - Meet with Project Management on process and template alignment



Accreditation Readiness

- ONGOING: Assessing accreditation readiness for local public health accreditation and determining gaps



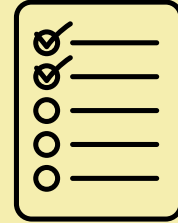


Administration: 2022 Activities

CUSTOMERS

Community Health Needs Assessment and Community Health Improvement Plan (CHNA/CHIP)

- Q2 Activities include:
 - Community Health Survey Report: <https://bit.ly/38yaUdT>
 - CHNA Report to be shared with Ascension Borgess Allegan's Board, United Way's, and Board of Commissioners by June 30, 2022
 - CHIP timeline developed by June 30, 2022



FINANCIAL STABILITY

Explore Grant Funding Opportunities Aligning with County-wide Efforts

- Michigan Rural Health Grant for 2 Community Health Workers
- Extension of funding for HRA and CDC Foundation

Optimize Grant Funding to Minimize County funding

- Continue reviewing Financial Statement Reports (FSRs) regularly
- Reallocation of essential local public health services funding as needed to maximize utilization of all grant funding

Additional State Funding: HB5523

- Workforce Development Grant: ACHD received approximately \$115,000. The award letter was received on April 22, 2022. Funds must be spent by September 30, 2022. Funds must be specific to COVID-19 workforce activities. We are working with finance to use these funds in place of any general funds related to COVID-19 activities

ENGAGED WORKFORCE

Workforce Development Plan

- Continue ensuring staff get updated on training and requirements to provide public health services (Training Plans & Learning and Growth's)

Training Opportunities Identified

- Microsoft Excel
- Funding for Compassion Fatigue training
- Implicit bias training is required for sanitarians, nurses, etc. Rule 338.7001(c) for 1 hour/recertification year



IMPROVED PROCESSES

CI Project: Contracts/Agreements

- Over 150 agreements (MOUs, Contracts, etc.) to manage with Project Management. Working collaboratively on identifying efficiencies for each type of agreement process
 - Q2 Activity include:
 - Meeting with Project Management to establish process that meets the goal of this CI project

ACHD Strategic Plan Overview

- Technical Assistance provided by MPHI to develop handout for various plans Public Health has in place and how it relates to the County Organization Strategic Goals
- Sharing in Quarter 3 Public Health Update

Community Health Survey: Executive Summary

Community Health Needs Assessment done every 3 years (Sections 330(k)(2) and 330(k)(3)(J) of the Public Health Service Act and MCL 333.2211)

Identified as a step from 2019 CHIP to gain community perspective



HEALTH Department



GOAL: To gather the perceptions, thoughts, opinions, and concerns of the community regarding health outcomes, health behaviors, social determinants of health, and clinical care for Allegan County. To gain the community voice for effective planning.

January 2022 to March 2022 collection period

631 Survey Participants

38 Questions

Paper & Electronic Distribution

HIGHLIGHTS

Parks/Green Space



TOP STRENGTHS:

Community Safety



Education

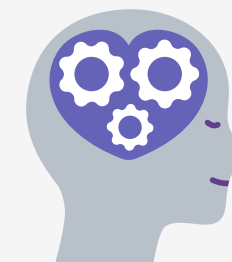


Limitations:

- Sample Size
- Sample Representation
- Income Levels
- Age Distribution

GREATEST HEALTH CONCERNS:

Mental & Behavioral Health



Alcohol & Drug Use



Obesity



Potential Emerging Public Health Concerns

ADMINISTRATION

- Communicable diseases/Emerging illnesses, and being able to respond to other public health concerns with limited resources
- Limited access, delay of care related to COVID-19, and impact on chronic diseases and health outcomes for residents
 - **Update:** received grant funding from Michigan Rural Health Center (approximately \$289,000), until May 2023
 - Identified 2 Community Health Workers to hire, the contract has been executed, awaiting funds
 - Attending training provided by Michigan Community Health Worker Association and using their curriculum
 - Establishing a referral process and meeting with other county departments, such as Senior/Veterans, Public Defenders, Corrections, as well as MACC to educate on the referral process and this available resource
- Social Determinants of Health and Equity and impact on health outcomes
- Working with communities as a Chief Public Health Strategist in a national, state, and local environment where communities are currently divided to focus on using respectful civil conversations





Resource Recovery: 2022 Activities (Quarter 1)

CUSTOMERS

Online Reporting Tools

- **MET:** Expanding online reporting tools for residents to request curbside recycling service and to report missed recycling collection
 - Curbside and missed recycling tools added to the county website

Supporting Local Units of Government (LUG)

- **ONGOING:** Supporting local municipalities interested in participating in the Recycling Surcharge election

Materials Management County Engagement

- **MET:** Reviewing data collected by West Michigan Sustainable Business Forum through the Materials Management County Engagement Grant

FINANCIAL STABILITY

Tire Collection Funding

- **MET:** Identified agriculture tire collection funding source.
 - Outlining service delivery options with VBDSP grant coordinator

IMPROVED PROCESSES

Exploring Online Scheduling Solutions

- **MET:** Coordinating with IS to explore online scheduling solutions for household hazardous waste and sharps appointments
 - Household hazardous waste appointment tool is in development

Website Improvements

- **ONGOING:** Improving Recycling website through on-going creation of a recycling guide for difficult to recycle items

EMERGING RESOURCE RECOVERY CONCERNS

- Legislation requiring updating plans in county. Our current resources in program are not able to accommodate this revision
- Rising transportation and labor costs resulting in increased recycling and household hazardous waste collection costs.
- Lack of countywide recycling and household hazardous waste collection options for residents.
- Lack of available Health Department employees, volunteers, and trustees to support recycling and scrap tire collections.

RESOURCE RECOVERY



18 LGU Participating in the Recycling Program, with 2 notices received for voter renewal of funding, and 2 additional seeking voter approval for funding to join



Increased collection of single stream recycling by 3.9%, scrap tires by 69%, household hazardous waste by 15%, and depot site visits by 8.4%



Launched an online recycling guide and added management instructions for 15 materials



Recycling Social Media Posts in Q1



Implemented an online submission form for residents to request curbside recycling services and report missed recycling collection.



Partnered with West Michigan Sustainable Business Forum and seven other W. Michigan counties to complete the Materials Management County Engagement Grant.



Resource Recovery: 2022 Activities

CUSTOMERS

Online Reporting Tools

- Q2 Activities include:
 - Development of Household Hazardous Waste appointment tool

Supporting Local Units of Government (LUG)

- Continue supporting local municipalities interested in participating in the Recycling Surcharge election

Materials Management County Engagement

- Continue review of data collected by West Michigan Sustainable Business Forum through the Materials Management County Engagement Grant
- Attending EGLE-sponsored events to learn more about the planning process to update the County's Materials Management Plan.

FINANCIAL STABILITY

Tire Collection Funding

- Pairing the Scrap Tire Collection grant with the VBDSP grant to begin a limited collection of oversized and agricultural tires.

IMPROVED PROCESSES

P2B

- Collaborating with team to ensure all service areas have an identified and trained back-up

Website Improvements

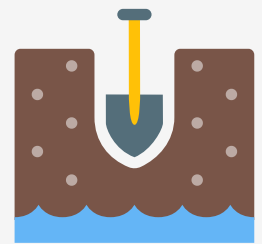
- Improving Recycling website through on-going creation of a recycling guide for difficult to recycle items

EMERGING RESOURCE RECOVERY CONCERNS

- No Update for Q2, continuing to monitor



ENVIRONMENTAL HEALTH



125

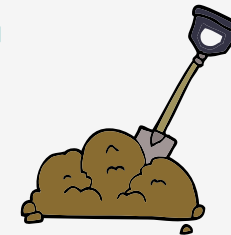
Residential Well Permits Issued

2

Type II Well Permits Issues

67

Abandoned Wells Plugged



141



On-Site Sewage Disposal Permits Issued

14

Type II Well Sanitary Surveys Conducted

39

SESC inspections Completed

8

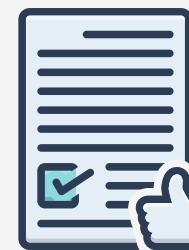
Failed Septic System Evaluations Conducted

65

On-Site Sewage Disposal Final Inspections Completed

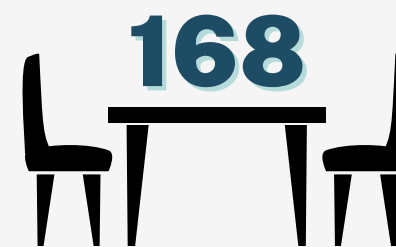
201

Residential Well Final Inspections Completed



102

SESC Permits Issued



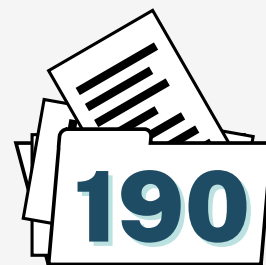
168

Fixed Food Establishments Inspected



9

Complaints/Food Borne Investigations



190

EH Records Requests Processed

2

Body Art Facilities Inspected

3,479

Facility Files Scanned

1

Temporary Food Inspection completed



9

plan reviews received

7

plan reviews approved

Out of season services not conducted during Quarter 1:

- Beach Sampling
- Vector Borne Surveillance
- Campground Inspections
- Pool Inspections
- Septage Truck Inspections

0

Well Construction & On-Site Sewage Disposal System Construction Violation Notices/Correction Orders Issued

25

Loan Evaluations Conducted

0

Groundwater monitoring letters sent



111

Vacant Parcels Evaluated for Septic Systems



Environmental Health: 2022 Activities (Quarter 1)

CUSTOMERS

Filebound

- **Project outcome:** customers will have access to files on the internet. This project is funded through an MDHHS grant
 - **MET:** Activities for this Quarter include:
 - Purchase and install technology equipment
 - Interview, hire, and on-board a Robert Half employee
 - Purge existing files
 - Scan files into PDF documents 3,479 files ready

Ground Water Ad Hoc Committee

- **Project outcome:** Have a community-driven workgroup around the Ground Water study
 - **MET:** Activities for this Quarter Include
 - Send an email and schedule the 1st meeting for the workgroup
 - in-person and virtual meeting options
 - Develop Committee Charter

FINANCIAL STABILITY

Michigan Department of Environment, Great Lakes, and Energy (EGLE) Financial Statement Reporting

- **MET:** New for 2022
 - Submitted the report to EGLE through the Department of Finance

IMPROVED PROCESSES

Standard of Work for Ground Water Laboratory Results (PFAS, etc.)

- **MET:** Activities for this quarter include:
 - Procedures on groundwater site laboratory results
 - Tracking MDHHS registered sites to ensure filter replacements, etc. are not missed
 - Groundwater Specialist and Manager developed a procedure with guidance from Health Officer
 - Developed a procedure and budget for the maintenance of existing filters

Type II Water Supply Rules/Regulation Changes

- **UPDATE:** 2016 Coliform rules change increasing testing, with no additional funding.
 - This creates a challenge for local health department Type II or Non-community Water Supply Coordinators' to meet the requirements
 - Developed a Corrective Plan of Action for EGLE to address the deficiencies in the administration of the program



Environmental Health: 2022 Activities

CUSTOMERS

Filebound

- **Project outcome:** customers will have access to files on the internet. This project is funded through an MDHHS grant
 - Activities for this Quarter include:
 - On-boarded new 2 Robert Half employees
 - Continue purging existing files
 - 4,602 files ready for Filebound

Ground Water Ad Hoc Committee

- **Project outcome:** Have a community-driven workgroup around the Ground Water study
 - Activities for this Quarter include:
 - Elect a Chair and Vice-chair
 - Hydrosimulatics, Inc. proposed a next step for the Work Group
 - Ottawa County and Lakeshore Advantage are presenting to the Work Group

ENGAGED WORKFORCE

- 2 Sanitarians attended FEMA funded Environmental Health Training in Emergency (ETHER) in Alabama
- The Ground Water Specialist received Harmful Algal Bloom (HAB) training
- A Sanitarian will be attending Vector-Borne training the week of May 16th. Part of P2B.

IMPROVED PROCESSES

Standard of Work for Ground Water Laboratory Results (PFAS, etc.)

- Activities for this quarter include:
 - The Ground Water Specialist and EH Services Manager meet with the Health Officer to review the process

Type II Water Supply Rules/Regulation Changes

- Multiple agencies (MALEHA, EGLE, and MDHHS) working with Lawmakers to locate additional funding for the program
- Working with EGLE on this process

Status of Gravel Pit Activity

- ARTICLE V - Earth Change Permit Requirements
 - Section 501. Activities Requiring an Earth Change Permit (see Section 324.9116 and R 323.1704)
- Invoices were mailed on April 18, 2022
- As of May 11th, 8 have paid and permits issued
 - Following up with the remainder

FINANCIAL STABILITY

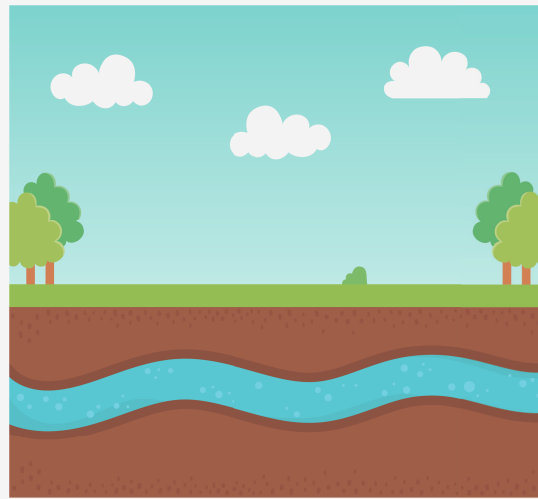
Michigan Department of Environment, Great Lakes, and Energy (EGLE) Financial Statement Reporting

- Submitted the Report to EGLE

Potential Emerging Environmental Issues

Ground Water Contamination

- Current Sites of PFAS Interest: KAVCO, Otsego, DeYoung Landfill (sites in Allegan County on Michigan PFAS Action Response Team's website)
- Ground Water Monitoring Program:
 - **UPDATE:** Sampled 15 wells from DeYoung landfill for groundwater contamination
 - **UPDATE:** POU PFAS Filters were recommended at 2 sites with exceedances



Harmful Algal Blooms (HABs)

- Longer, warmer summer season may contribute to incidences and duration of HABs
 - ACHD has joined EGLE and MDHHS on additional training in the detection of HABs

Vector-borne Diseases, including EEE

- Mosquito/Tick Surveillance program: working with Resource Recovery and Public Health for agriculture tire collection. Updates will be shared in future BOC updates
- Training an additional Sanitarian for P2B to assist with the administration of the program
- Education and promotion to be shared through ACHD communication channels as we enter the season
- Working with Parks, Recreation, and Tourism to put signage on tick prevention up in highly trafficked areas.



Beach Testing Surveillance and Monitoring

- **UPDATE:** Beach sampling and surveillance beginning after Memorial Day
- Working with Parks, Recreation, and Tourism to put signage on beach water safety up in highly trafficked areas.



Climate Change

- The EH Services Manager participated in a webinar about climate change, its effect on the groundwater, and how it will determine the design and installation of septic systems.
- Refreshing sanitarians of water tightness on the septic tanks in high water table areas and to pay attention to the seasonal high water table when performing the soil evaluations.



PERSONAL HEALTH



679 CSHCS Total Clients

33 CSHCS New Client Enrollment

33

Level 1 Plan of Care CSHCS

13

Level 2 Care Coordination CSHCS

0

CSHCS Case Management Services

10

CSHCS Transition Plan of Care

57/54

CSHCS Transition contact assists/mailings

25

redistributions of vaccine inventory (covid and non-covid)

3,811

Overall Medicaid Outreach Units



28

Homebound immunizations given

251

Immunizations Provided

39

Waivers Provided



48

STD/HIV Clinic Visits



16,650

Wear One Kits Distributed



4,912

Hearing and Vision screenings conducted

325

Close contacts monitored for COVID-19

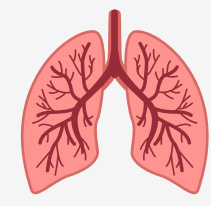
7,296

Communicable Disease Investigations conducted (MDSS)



1

Active TB (DOTs)



7

TB Skin Tests placed



6

TB latent infections

STD/HIV Case Follow-Up

131

12

Lead Testing Follow up clients



11

Rabies Evaluations



30

Animal Bite Follow-Ups



Personal Health: 2022 Activities (Quarter 1)

CUSTOMERS

Lead Testing

- **MET:** Activities for this Quarter include:
 - Provide education and follow-up on Venous confirmation of EBL to parents of children with elevated blood lead levels greater than 4.5µg/dL
 - Ordered new education materials from the State related to the new reference ranges
 - Educate the public and health care providers about childhood lead poisoning and other housing-related health hazards
 - MDHHS go live with materials and updated changes to the database scheduled for 5/2/2022

CSHCS Transition Toolkit Development

- **MET:** Activities for this Quarter include:
 - Create a local transition toolkit for young adults
 - Offer care plan development regarding the transition of care to CSHC clients aged 12 and provide CSHC clients aging out assistance regarding accessing adult care and linking to resources

CUSTOMERS

Immunizations

- **MET:** Activities for this Quarter include:
 - Adopt a community-based approach to the provision of immunization services by working with community partners
 - Provide a recall for individuals that are not up to date
 - 1,442 Recall notices were sent to Allegan County youth with robust education, vaccine schedules, and resources
 - Working to make vaccines available in non-traditional settings
 - vaccinated 28 homebound individuals
 - Educate the public on vaccine-preventable diseases
 - Mailings, social media posts, and website content



FINANCIAL STABILITY

- **MET:** Evaluating immunization fees
- **MET:** Determining what resources are needed to provide mandated communicable disease investigation with the influx of communicable disease cases

IMPROVED PROCESSES

- **MET:** Ensuring all QA activities are being done and identifying opportunities for improvement



Personal Health: 2022 Activities

CUSTOMERS

Lead Testing

- **Program goal:** Increase the number of children <6 years old testing for Lead to help prevent lifelong negative health impacts
 - Activities for Q2 include:
 - Introduce new resources to local providers with an updated letter from ACHD Medical Director
 - Update website materials and hyperlinks as they become available on MDHHS website
 - Collaborate with GSC and Head Start Advisory on education, provider resources, and referrals

CSHCS Transition Toolkit Development

- **Program goal:** Increase the percentage of adolescents, with and without special healthcare needs, who receive services necessary to make transitions to adult health care.
 - Activities for Q2 include:
 - Print the first run of the local transition resource guide

IMPROVED PROCESSES

- Audit of 340B program- review feedback informing next steps if indicated
- MDHHS Technician Assessment Program (TAP) review of Vision Tech – receive feedback and develop next steps as needed

CUSTOMERS

Immunizations

- **Program goal:** Increase vaccine coverage rates for vaccine-preventable disease in Allegan County for all populations with a priority on those 19 and under, as well as vulnerable population



- Activities for Q2 include:
 - Continue to collaborate with redistribution to local providers, assisting additional entities to become approved providers.
 - Provide 3 nontraditional opportunities for targeted vaccine distribution
 - Collaborate with CSHCS team to distribute recall notices to CSHCS enrolled clients, including education and resources related to nontraditional vaccination resources

FINANCIAL STABILITY

- Submit budget documents requesting additional resources, as well as the 5-year forecasted needs
 - Increasing rabies bite investigation funds related to previous year trends
- Reevaluation of distribution of duties across the Personal Health Team

Potential Emerging Personal Health Issues

ONGOING: Communicable Diseases vs. Resources Available

- Identified a Gap related to needs/demands versus resources (current FTEs) related to personal health services, specifically communicable diseases.
 - PH requesting position and providing recommendations in our budget development and submission for 2020-2028.
 - Requesting coordinator position similar to field and food coordinators to help PH Service Manager to help coordinate all programs

UPDATE: Lead Levels

- Expanded eligibility and potential demand for services related to Lead
- MDHHS has identified approximately \$800 of funding to reimburse LHDs for non-Medicaid recipients to receive home-based assessments creating a potential impact on ACHD and team capacity.

NEW: Children with Hepatitis of Unknown Cause

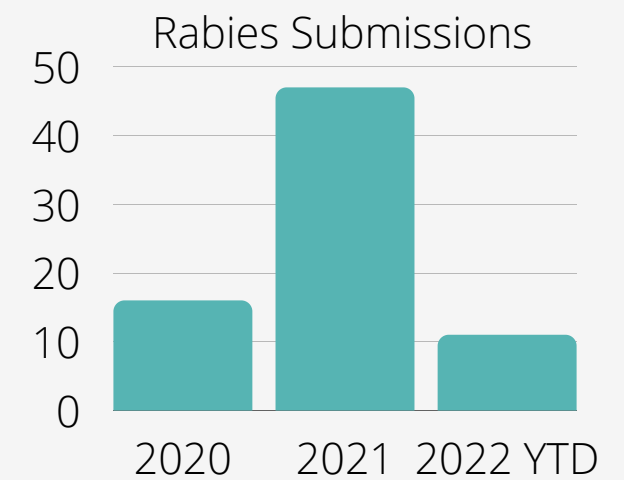
- CDC is currently working with health departments across the country to identify children with hepatitis of unknown cause. Investigators are examining a possible relationship to adenovirus type 41 infection.
- Cause and prevalence (number of cases) currently not known
- ACHD is providing education on testing and vaccinations

NEW: Oral Health Legislation

- Under the legislation, MCL333.9316, Screenings are required for those entering kindergarten
- Looking to expand our partnership with My Community Dental Clinics (MCDC)

NEW: Rabies Submissions

- Allegan County Health Department coordinates the rabies submissions, education, and referral for treatment related to animal bites and exposures.
- The MDHHS Bureau of Laboratories is the only lab in the state that tests animals for rabies.



NEW: Syphilis

- Rates of primary and secondary (PS) syphilis in women have increased substantially across the United States; 21% from 2019-2020 and 147% between 2016-2020. Michigan is following these trends with 21% of PS syphilis cases reported in 2021 occurring among women of childbearing age.
- Between March 15 and April 26, 2022, 3 individuals with manifestations of early ocular, otic, or neurosyphilis were diagnosed in Kalamazoo County. 2 cases were in women. Ocular and otic syphilis can lead to permanent visual or hearing loss.
- ACHD attending a training related to Syphilis specifically for Public Health Providers in Michigan on June 3.
- Syphilis cases in AC 2018 8 2019 16 2020 11 2021 14 .

PUBLIC HEALTH PLANNING & PREPAREDNESS

42 Health Education
Materials Created



Newsletters sent out



Press Releases
sent out

0 Outreach Events

0 PHEP Drills

0 Other County Emergency
Preparedness Drills



6,870

Followers on Facebook



301

Followers on Twitter

63

Facebook posts on
public health items in Q1

45

Twitter posts in Q1



Planning and Preparedness: 2022 Activities (Quarter 1)

CUSTOMERS

Community Inclusion Plan

- **Requirement:** Enhance public health preparedness and awareness through outreach to community partners, including groups representing at-risk populations, and continue to implement a multi-year strategy to ensure greater integration of vulnerable/functional needs populations into local plans, planning, and exercises.
 - **UNMET:** Activities for this Quarter include:
 - Update Whole Community Inclusion Plan to reflect identified vulnerable populations for the COVID-19 After Action Report
 - We need to have the data from the After Action Report to effectively update the WCI plan.
 - **CORRECTIVE ACTION:** Have this activity completed by June 30, 2022.

Communication Plan

- **MET:** Update plan to include Health Education, Outreach, and Mobile Clinic objectives and activities:
 - Include at least 4 community outreaches for 2022
 - Listed 13 potential outreach events for ACHD to attend
 - Incorporate national public health observances in our monthly newsletter
 - See past newsletters: <https://bit.ly/3yb2wuU>
 - Collaborate with other agencies to improve the marketing of community events (MACC, Schools, Businesses, Health Care)
 - Continuous work. Included information from Great Start Collaborative in March newsletter.

Planning for Vaccine Resistant COVID-19 Variant

- **MET:** Identifying Resources needed and Activities in the event that there is a vaccine-resistant COVID-19 Variant with higher mortality rates
 - Action steps to be included in Q2 Incident Action Plan (IAP)

FINANCIAL STABILITY

Grant and Technical Assistance Opportunities

- **ONGOING:** Assessing 10 EPHS and National Public Health Accreditation Readiness
 - Seek grant opportunities and/or Technical Assistance from Michigan Public Health Institute (MPHI) to bridge gaps

IMPROVED PROCESSES

COVID-19 After Action Report (similar to Otsego and EEE)

- Develop survey instrument to measure strengths, weaknesses, threats and opportunities for improvement from the COVID-19 response
- Deploy the survey tool to community partners, community members, businesses, schools, LUG's by March 2022.

COVID-19 Quarterly Action Plan Update

- Submit COVID-19 Quarterly Action Plan to MDHHS by March 31, 2022



Planning and Preparedness: 2022 Activities

CUSTOMERS

Community Inclusion Plan

- Update Whole Community Inclusion Plan to reflect identified vulnerable populations for the COVID-19 After Action Report by June 30, 2022.

Outreach at Douglas Community Pride and Bridgefest

- Attend 2 Outreach events, promoting health department services, providing access to immunizations, STI/HIV Testing, education on vector-borne diseases, etc.

Planning for Vaccine Resistant COVID-19 Variant

- Create templated communication and education for a swift response based on COVID-19 landscape

FINANCIAL STABILITY

Grant and Technical Assistance Opportunities

- Continue assessing 10 EPHS and National Public Health Accreditation Readiness
 - Public Health Accreditation Board (PHAB released 2022 accreditation guidelines that changed due to the 10 EPHS changing in 2020.
 - Will be building into our plans to review these changes and update/create action steps to align.

IMPROVED PROCESSES

COVID-19 After Action Report

- Required report to submit to MDHHS by June 30, 2022
- Deployed the survey in April 2022, closed on April 19, 2022
 - 363 individuals responded to the survey, with over 60% reporting as a Community Member
 - **Areas identified for improvement** include consistent, direct communication, mental health services, consistent contact tracing, delay of care
 - **Areas identified as strengths** include social media and access to testing and vaccine clinics, which continued to improve over the phases
- Activities for Q2 include:
 - Analyzing results from the survey
 - Host focus groups for a "deeper dive" into areas identified for improvement and areas identified as strengths for more knowledge on tangible improvements we can make locally.
 - EOC Annexes to assist with prioritization for AAR
 - Submit a report to MDHHS, due June 30, 2022
 - Will be sent to BOC prior to submission



Potential Emerging Public Health Concerns: Planning and Preparedness

Improve our ability to prepare for, respond to, and recover from public health emergencies with limited resources

- Continue to work with local providers and encourage new providers to enroll in being a vaccine provider
 - There are limited partners that can administer to those under 3.
 - Provide updates to local pediatricians on eligibility and recommendations.
- Work with Emergency Management and EOC Annexes to identify gaps and improve all-hazard emergency responses
 - **UPDATE:** Use data from the After Action Survey to help with improvements

2022 Monkeypox

- Monkeypox is a viral zoonosis (a virus transmitted to humans from animals) with symptoms similar to those seen in the past in smallpox patients, although it is clinically less severe
- Monitoring national and state news:
 - National:
 - Since May 14, 2022, clusters of monkeypox cases, have been reported in several countries that don't normally have monkeypox.
 - On May 18, the Centers for Disease Control and Prevention (CDC) confirmed a case of monkeypox in the United States in a patient from Massachusetts. Cases of monkeypox have previously been identified in travelers from, or residents of, West African or Central African countries where monkeypox is considered to be endemic.
 - The CDC is urging healthcare providers in the U.S. to be alert for patients who have rash illnesses consistent with monkeypox, regardless of whether they have travel or specific risk factors for monkeypox and regardless of gender or sexual orientation.
 - State:
 - Currently, there are no confirmed cases of Monkeypox in Michigan.
 - MDHHS has sent guidance related to case investigation which can be viewed [here](#).

2022 Highly Pathogenic Avian Influenza (Bird Flu)

- Monitoring national and state news.
 - National:
 - A person tested positive for Avian Influenza A (H5) virus in Colorado on April 28, 2022. The case occurred in a person who had direct exposure to poultry and was involved in the culling (depopulating) of poultry with presumptive H5N1 bird flu.
 - State:
 - Highly Pathogenic Avian Influenza has been detected in backyard flocks in Branch County, Kalamazoo County, Livingston County, Macomb County, Menominee County, Muskegon County, Oakland County, Saginaw County, Washtenaw County, and Wexford County.
 - On May 11, 2022, MDARD and the Michigan State University Veterinary Diagnostic Laboratory detected HPAI in a commercial poultry facility in Muskegon County. This is the first detection of HPAI in a commercial poultry operation in Michigan.
 - Allegan:
 - On May 24, 2022, MDHHS notified ACHD of a recent detection of HPAI in a wild bird found within Allegan County.
- **Critical for bird owners to practice biosecurity measures. Learn more and subscribe to MDARD updates at www.michigan.gov/birdflu**



Funding

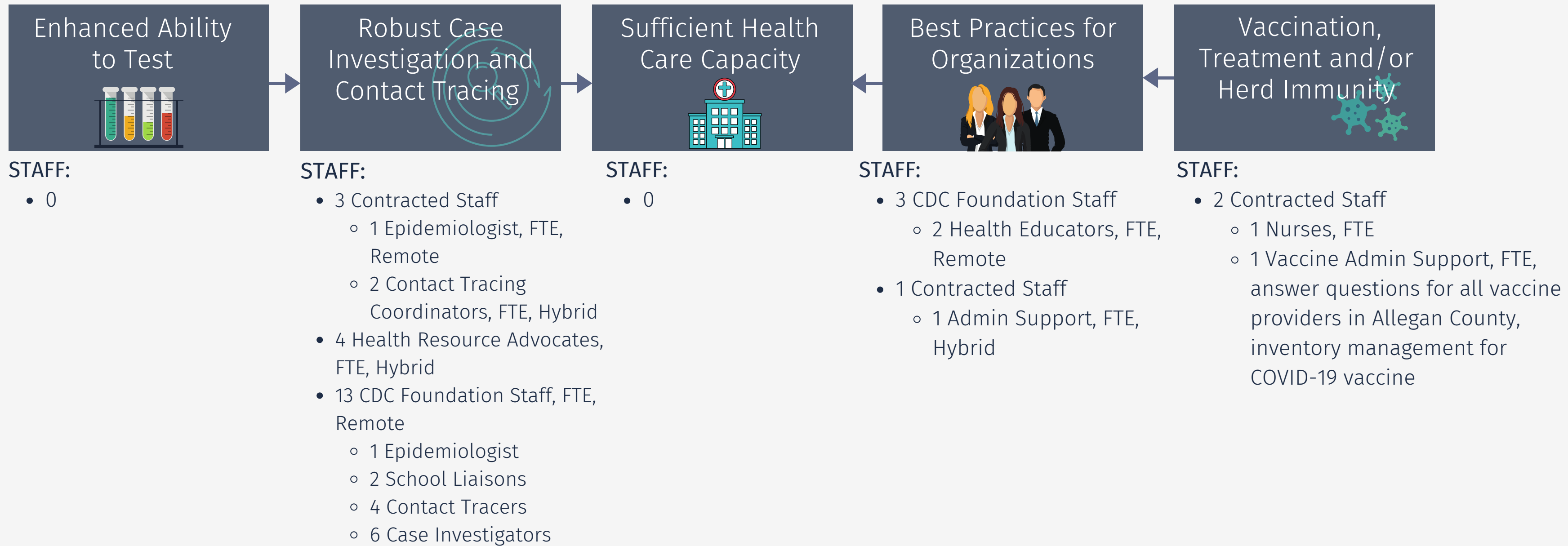
- The anticipated funding ACHD will receive for Public Health Emergency Preparedness will not be able to completely cover the continued COVID-19 response.
- Also seeing cost increases for equipment and tools for preparedness activities



HEALTH Department

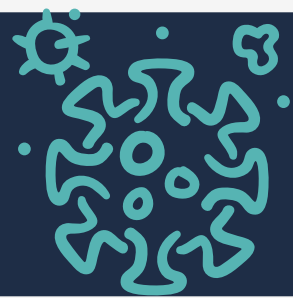
Allegan County Health Department: Organization Chart, Staff for COVID Response

COVID-19 MITIGATION COMPONENTS



11 CDCF Staff leaving by end of Q2

ACHD team believes we can continue to provide a mandated response and manage potential surges with prioritized cases, with the resources noted above



COVID-19 Response: 2022 Activities (Quarter 1)

CUSTOMERS

Health Resource Advocates and School Liaisons

- **MET:** Deploy 4 Regional Health Resource Advocates and 11 School Liaisons to local school districts

Website Improvements

- **MET:** Update COVID-19 Webpage to improve navigation on various COVID-19 topics
- **MET/ONGOING:** Provide sources for local Health Education resources

Providing Health Education

- **MET:** Creating educational materials for social media to include mitigation strategies, latest research, timely news
 - 26 materials
- **MET:** Updating guidance documents as the situation changes
 - Updated School Guidance Documents and Workplace Toolkit

Access to Mitigation Tools

- **MET:** Deploy adult and child KN95 masks to LUG's and Libraries for community members (ensuring adequate masking for personal protection for those at risk)
 - 14,120 adult KN95 masks distributed, 530 child KN95 masks distributed

ENGAGED WORKFORCE

Staffing Changes

- Onboard CDC Foundation staff members for contact tracing, case investigation, health education, school liaison, epidemiology

FINANCIAL STABILITY

Staffing Changes

- Using CDC Foundation resources to help maintain mandated services

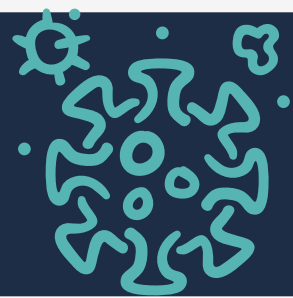
IMPROVED PROCESSES

Recovery Phase, Managing Close Contacts similar to other Communicable Diseases

- **MET:** Providing exposure notices in school settings
 - 398 exposure notices sent in Q1
- Quarantine used in outbreak/clusters, and other specialized circumstances such as high risk settings

Accessible Testing

- **MET:** Identified LUGs and Libraries to distribute rapid antigen testing kits and waiting on supplies to re-distribute to them.
 - Individuals can access at home testing kits at 2 libraries (Allegan and Fennville) through MDHHS program
- **MET:** Share information via email newsletter and social media



COVID-19 Response: 2022 Activities

CUSTOMERS

Assess Treatment Access with Providers

- Continue to work with providers to understand barriers to offering treatment in their practice
- Developing Standard Operating Procedures with our medical director in the event ACHD needs to provide Anti-viral treatments

Providing Health Education

- Regularly create educational materials for social media to include mitigation strategies, latest research, timely news
- Continue to update local guidance documents as new information/guidance emerges

Access to Mitigation Tools

- Continue to deploy adult and child KN95 masks to LUG's and Libraries for community members (ensuring adequate masking for personal protection for those at risk). Preparing for a resurgence by getting a cache of PPE and rapid home tests to get to our community partners to deploy when we have a resurgence.

ENGAGED WORKFORCE

Staffing Changes

- Offboarding 11 CDC Foundation staff members and realigning team related to Communicable Disease
- Onboard 2 Community Health Workers (grant-funded), 1 HRA and 1 Admin Support

FINANCIAL STABILITY

Staffing Changes

- Continue using CDC Foundation resources to help maintain mandated services based on response levels for future surges for as long as resources are available
- Working with Finance Department to maximize COVID-19 funding

Billing insurances for COVID-19 related services

- Exploring billing codes related to COVID-19 related services, such as anti-virals

IMPROVED PROCESSES

Recovery Phase, Managing similar to other Communicable Diseases

- Continuing to monitor, but incorporating to roll response into our Communicable Disease Program (Personal Health)

Communicable Disease Plan for Schools

- Provide school leadership a templated individual communicable disease plans to use their Emergency Operation Plans since illness/outbreaks are an identified risk

Questions?



Are there any items that you'd like to see included in the next BOC Quarterly Meeting?