

# Allegan County

## 2022 Community Health Needs Assessment Allegan County, Michigan

Conducted: July 1, 2021 – June 30, 2022

Hospital Tax Year: 2021



**HEALTH**  
Department



**Ascension**  
**Borgess Allegan**



United Way of Ottawa  
and Allegan Counties

## **Allegan County 2022 CHNA**

The goal of this report is to offer a meaningful understanding of the most significant health needs across Allegan County, as well as to inform planning efforts to address those needs. Special attention has been given to the needs of individuals and communities who are more vulnerable, unmet health needs or gaps in services, and input gathered from the community. Findings from this report can be used to identify, develop, and focus hospital, health system, and community initiatives and programming to better serve the health and wellness needs of the community. The three organizations cited below formed the Allegan Community Health Needs Assessment (CHNA) Collaborative to create one comprehensive county-wide CHNA report.

Ascension Borgess Allegan Hospital  
555 Linn Street, Allegan, MI

Allegan County Health Department  
3255 122nd Ave., Allegan, MI

United Way of of Ottawa and Allegan Counties  
650 Grand Street, Allegan, MI

The 2022 report was approved by the Ascension Borgess Allegan Hospital Board of Trustees on June 28, 2022, Tax Year 2021, and applies to the following three-year cycle: July 2022 - June 2025 (FY 2023 - FY 2025.) This report, as well as the previous report, can be found at the Ascension Borgess Allegan Hospital website: [Ascension Borgess Allegan Hospital](#)

In addition, the report is also provided on the Allegan County Health Department website [www.allegancounty.org/health/data-and-reports](http://www.allegancounty.org/health/data-and-reports) and the United Way of Ottawa and Allegan Counties website <https://www.oaunitedway.org/>. We value the community's voice and welcome your feedback on this report. Please visit [Community Health Needs Assessments | Ascension](#) to submit your comments.

# Allegan County 2022 CHNA

## Table of Contents

<b>Table of Contents</b>	<b>3</b>
<b>Acknowledgements / Executive Statement</b>	<b>5</b>
<b>Executive Summary</b>	<b>6</b>
<b>About Allegan CHNA Collaborative</b>	<b>8</b>
Ascension	8
Ascension Borgess Allegan Hospital	8
Allegan County Health Department	9
United Way of Ottawa and Allegan Counties	9
<b>About the Community Health Needs Assessment</b>	<b>10</b>
Purpose of the CHNA	10
IRS 501(r)(3) and Form 990, Schedule H Compliance	10
<b>Community Served and Demographics</b>	<b>11</b>
Community Served	11
Demographic Data	12
<b>Process and Methods Used</b>	<b>13</b>
Collaborators and/or Consultants	13
Data Collection Methodology	14
<b>Community Needs</b>	<b>21</b>
Identified Needs	21
Significant Needs	21
Prioritized Needs	33
<b>Summary of Impact from the Previous CHNA Implementation Strategy</b>	<b>34</b>
<b>Approvals of Plan</b>	<b>35</b>
<b>Conclusion</b>	<b>36</b>
<b>Appendices</b>	<b>37</b>
Table of Contents	37
Appendix A: Definitions and Terms	38

## **Allegan County 2022 CHNA**

Appendix B: Community Demographic Data and Sources	40
Appendix C: Community Input Data and Sources	43
Appendix D: Secondary Data and Sources	44
Appendix E: Health Care Facilities and Community Resources	51
Appendix F: Evaluation of Impact from the Previous CHNA Implementation Strategy	56

# Allegan County 2022 CHNA

## Executive Statements

The 2022 CHNA represents a true collaborative effort in order to gain a meaningful understanding of the most pressing health needs across Allegan County. The Allegan CHNA Collaborative, composed of members from Allegan County Health Department, United Way of Ottawa and Allegan Counties, and Ascension Borgess Allegan Hospital, are exceedingly thankful to the many community organizations and individuals who shared their views, knowledge, expertise, and skills with us. A complete description of community partner contributions is included in this report. We look forward to our continued collaborative work to make this a better, healthier place for all people.

We would also like to thank you for reading this report, and your interest and commitment to improving the health of Allegan County.

### Ascension Borgess Allegan Hospital

Rob Mach, FACHE, Administrator

*"Ascension Borgess Allegan Hospital is proud to be partnering with the Allegan County Health Department and United Way of Ottawa and Allegan Counties on this CHNA process. The information gathered during this process from the community is extremely vital to us in developing strategies to address the health related issues that the community prioritizes."*



### Allegan County Health Department

Angelique Joynes, MPH, RN, Health Officer, Allegan County Health Department

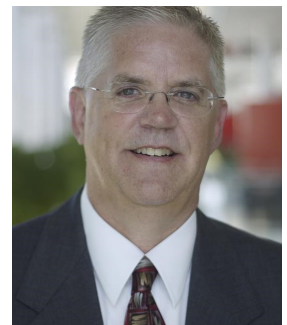
*"For a productive and thriving community, we need our community to be healthy. To achieve a healthy community, it is important to look locally at what diseases are affecting our community members, listen to local voices identifying what barriers they are facing to be healthy, and gather different perspectives from local stakeholders on what they believe are barriers. Then collectively, our community can work towards reducing identified barriers and improve health outcomes for all."*



### United Way of Ottawa and Allegan Counties

Randy Kortering, Interim President, United Way of Ottawa and Allegan Counties

*"United Way is proud to support this critical community survey. The data collected will help determine where government, businesses, and other local service providers focus their efforts over the next few years to improve the health, education and financial stability of the people in Allegan County. By using our collective resources to break down barriers, we can build stronger communities in which people have more opportunities to achieve their full potential."*



# Allegan County 2022 CHNA

## Executive Summary

The goal of the 2022 CHNA report is to offer a meaningful understanding of the most significant health needs across Allegan County. Findings from this report can be used to identify, develop, and focus hospital, health system, and community initiatives and programming to better serve the health and wellness needs of the community.

### Purpose of the CHNA

As part of the Patient Protection and Affordable Care Act of 2010, all not-for-profit hospitals are required to conduct a CHNA and adopt an implementation strategy every three years. The purpose of the CHNA is to understand the health needs and priorities of those who live and/or work in the communities served by the hospital, with the goal of addressing those needs through the development of an implementation strategy plan.

In addition, Sections 330(k)(2) and 330(k)(3)(J) of the Public Health Service Act require that health centers assess the unmet need of health services in the areas they serve “at least once every three years for the purposes of informing and improving the delivery of health center services.”

### Community Served

Although Ascension Borgess Allegan Hospital serves Allegan County and surrounding areas, Ascension Borgess Allegan Hospital, the Allegan County Health Department and the United Way of Ottawa and Allegan Counties have defined its community as Allegan County for the 2022 CHNA. Allegan County was selected as our community because it is our primary service area as well as our partners' primary service area. Additionally, community health data is readily available at the county level.

### Data Analysis Methodology

The 2022 CHNA was conducted from July 2021 to March 2022, and utilized a process which incorporated quantitative and qualitative data from both primary and secondary sources. Primary data sources included information provided by groups/individuals, e.g., community residents, health care consumers, health care professionals, community stakeholders, and multi-sector representatives. Special attention was given to the needs of individuals and communities who are more vulnerable, and to unmet health needs or gaps in services. During the assessment process, a core team composed of representatives from the three primary partners developed a community survey. The survey tool was shared with the Allegan County Multi-Agency Collaborative Council (MACC) for wide dissemination through multiple community networks. A total of 631 surveys were collected. Secondary data was compiled and reviewed to understand the health status of the community. Measures reviewed included chronic disease, social and economic factors, and healthcare access and utilization trends in the community and were gathered from reputable and reliable sources.

## Allegan County 2022 CHNA

### Community Needs

The Allegan CHNA Collaborative, with contracted assistance from Mary Kushion Consulting, LLC, analyzed secondary data of over 50 indicators and gathered community input through a community survey to identify the needs in Allegan County. In collaboration with community partners, the Allegan CHNA Collaborative used a phased prioritization approach to determine the most crucial needs for community stakeholders to address. The significant needs are as follows:

- **Mental and Behavioral Health**, including substance use disorder, addiction
- **Housing**
- **Lack of Healthcare Providers & Services**, including access to prenatal/perinatal care, broadband internet, availability of appointments, etc.
- **Health Behaviors/Preventative Health**, including Physical Activity
- **Food Security**, including access and availability of fresh foods
- **High Cost of Healthcare**, including insurance limitations
- **Income**, including poverty, inequality/ household income
- **Transportation Services**

Of the identified significant needs, the Allegan CHNA Collaborative selected the following as our prioritized needs for implementation strategy development of the community health improvement plan.

- Mental and Behavioral Health, including substance use and addiction
- Housing
- Food Security
- Lack of Healthcare Providers & Services

## Allegan County 2022 CHNA

### About Allegan CHNA Collaborative

#### Ascension

Ascension is a faith-based healthcare organization dedicated to transformation through innovation across the continuum of care. The national health system operates more than 2,600 sites of care – including 145 hospitals and more than 40 senior living facilities – in 19 states and the District of Columbia, while providing a variety of services including clinical and network services, venture capital investing, investment management, biomedical engineering, facilities management, risk management and contracting through Ascension’s own group purchasing organization.

Ascension’s Mission provides a strong framework and guidance for the work done to meet the needs of communities across the U.S. It is foundational to transform healthcare and express priorities when providing care and services, particularly to those most in need.

**Mission:** Rooted in the loving ministry of Jesus as healer, we commit ourselves to serving all persons with special attention to those who are poor and vulnerable. Our Catholic health ministry is dedicated to spiritually-centered, holistic care which sustains and improves the health of individuals and communities. We are advocates for a compassionate and just society through our actions and our words.

For more information about Ascension, visit <https://www.ascension.org/>.

#### Ascension Borgess Allegan Hospital

As a Ministry of the Catholic Church, Ascension Borgess Allegan Hospital is a non-profit hospital governed by a local board of trustees represented by residents, medical staff, and sister sponsorship's, and has been providing medical care to Allegan County. Ascension Borgess Allegan Hospital is a full-service, critical access hospital with 24/7 emergency care and a Level IV Trauma Center. Ascension Borgess Allegan Hospital offers specialty care including cancer care, surgical services, primary care, laboratory, physical rehabilitation, radiology, sleep center and behavioral health. It also provides inpatient and outpatient medical services, health screenings, and education programs. For more information about Ascension Borgess Allegan Hospital, visit [Ascension Borgess Allegan Hospital](#).



## **Allegan County 2022 CHNA**

### **Allegan County Health Department**

Under the Allegan County government, the Allegan County Health Department is the local public health agency that provides services as established by federal, state, and local guidelines under the guidance of the Allegan County Board of Commissioners. The department contains four divisions – Administration, Environmental Health, Personal Health, and Planning and Preparedness that serve the Allegan County jurisdiction. The department follows its purpose: “Together; striving for a healthier Allegan County,” with a vision to “provide our citizens superior and innovative services, be judicious and efficient in the expenditure of resources and promote a safe, clean, and healthy environment in which to live, work, and play.” For more information, visit [www.allegancounty.org/health](http://www.allegancounty.org/health).

### **United Way of Ottawa and Allegan Counties**

United Way of Ottawa and Allegan Counties supports, develops and implements a range of impact solutions that improve lives and create stronger communities. United Way works with organizations, community partners and supporters to create the building blocks of a better life for all by focusing on education, health and financial stability. For more information, visit <https://www.oaunitedway.org/>.

## **Allegan County 2022 CHNA**

### **About the CHNA**

A CHNA is essential for community building and health improvement efforts, and directing resources where they are most needed. CHNAs can be powerful tools that have the potential to be catalysts for immense community change.

### **Purpose of the CHNA**

A CHNA is “a systematic process involving the community to identify and analyze community health needs and assets in order to prioritize, plan, and act upon unmet community health needs.” The process serves as a foundation for promoting the health and well-being of the community by identifying the most pressing needs, leveraging existing assets and resources, developing strategic plans, and mobilizing hospital programs and community partners to work together. This community-driven approach aligns with the Allegan CHNA Collaborative’s commitment to offer programs designed to address the health needs of a community, with special attention to persons who are underserved and vulnerable.

### **IRS 501(r)(3) and Form 990, Schedule H Compliance**

The CHNA also serves to satisfy certain requirements of tax reporting, pursuant to provisions of the Patient Protection and Affordable Care Act of 2010, more commonly known as the Affordable Care Act (ACA). As part of the ACA, all not-for-profit hospitals are required to conduct a CHNA and adopt an implementation strategy every three years. Requirements for 501(c)(3) Hospitals Under the Affordable Care Act are described in Code Section 501(r)(3), and include making the CHNA report (current and previous) widely available to the public. In accordance with this requirement, electronic reports of both the CHNA and the implementation strategy can be found at <https://healthcare.ascension.org/CHNA> and paper versions can be requested at Ascension Borgess Allegan Hospital administrative offices upon request. The Allegan County Health Department also has the CHNA posted on their website at [Data and Reports | Allegan County, MI](#).

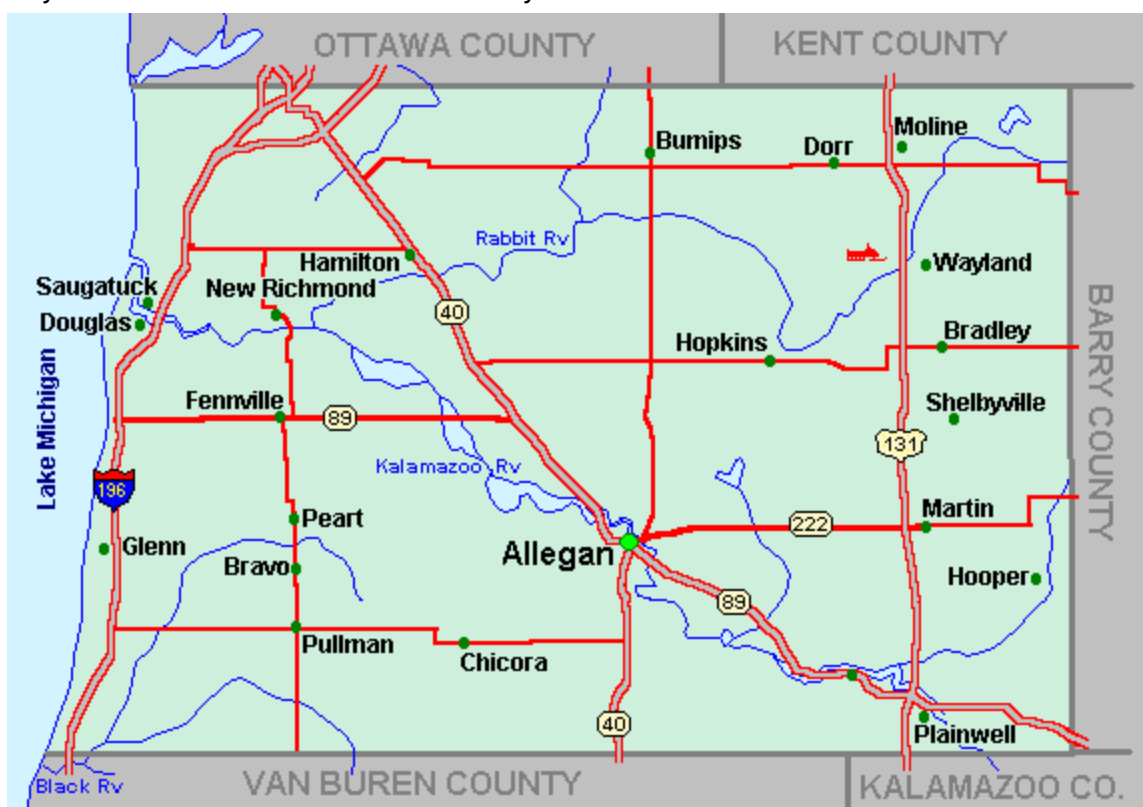
## Allegan County 2022 CHNA

### Community Served and Demographics

A first step in the assessment process is clarifying the geography within which the assessment occurs and understanding the community demographics.

#### Community Served

For the purpose of the 2022 CHNA, the Allegan CHNA Collaborative has defined its community served as Allegan County. Although the Ascension CHNA Collaborative serves Allegan County and surrounding areas, the “community served” was defined as such because (a) most of our service area is in each county; (b) most of our assessment partners define their service area at the county level; and (c) most community health data is available at the county level.



*Image 1: Community Service Area, Allegan County, Michigan*

Allegan County is located in Southwest Michigan along the Lake Michigan shoreline. It is a mix of farms, forests, shorelines, towns, orchards, and industrial parks. The county has several lakes, rivers, snowmobile trails, hiking and horseback riding trails, a large motorsports park, golf courses, arts and culture, and the only agri-tourism trail in Southwest Michigan. The City of Allegan is the county seat. Allegan County experienced a population increase of 8% from 2010 to 2020 from industrial growth.

## Allegan County 2022 CHNA

### Demographic Data

Located in West Michigan, along the Lake Michigan coast, Allegan County has a population of 120,502 people living in the 825.25 square mile report area defined for this assessment according to the U.S. Census Bureau American Community Survey 2015-19, 5-year estimates. The population density for this area, estimated at 140.74 persons per square mile, is greater than the national average population density of 91.93 persons per square mile. Table 1 contains the demographic data highlights for Allegan County:

**Table 1: Description of the Community**

Demographic Highlights		
Indicator	Allegan County	Michigan
<b>Population</b>		
% Living in rural communities	64.5%	25%
% below 18 years of age	23.8%	21.5%
% 65 and older	17%	17.7%
% Hispanic	7.5%	5.3%
%Black or African American	1.6%	14.1%
% Asian	0.9%	3.4%
% Non-Hispanic White	92%	74.7%
Population Increase (2010-2020)	8%	2%
<b>Social and Community Context</b>		
Indicator	Allegan County	Michigan
Proportion of community members that speak English "less than well"	.7%	1.5%
Median Household Income	\$62,965.00	\$57,144.00
Percent of Persons in Poverty	7.3%	12.6%
Percent of Uninsured under 65 years of age	7.1%	6.9%
Percent of adults ages 25 and over with a high school diploma or equivalent.	90.9%	91%
Percent of population ages 16 and older unemployed but seeking work	4.2%(January 2022)	Unavailable at time of report

To view Community Demographic Data in its entirety, see Appendix B (page 40).

# Allegan County 2022 CHNA

## Process and Methods Used

The Allegan CHNA Collaborative is committed to using national best practices in conducting the CHNA. Health needs and assets for Allegan County were determined using a combination of data collection and analysis for both secondary and primary data, as well as community input on the identified and significant needs.

The Allegan CHNA Collaborative relies on the model developed by the County Health Rankings and Roadmaps and the Robert Wood Johnson Foundation, utilizing the determinants of health model as the model for community health improvement.

## Collaborators and/or Consultants

With the contracted assistance of Mary Kushion Consulting, LLC, Ascension Borgess Allegan Hospital reached out to the following organizations to form the Allegan CHNA Collaborative to complete the 2022 CHNA:

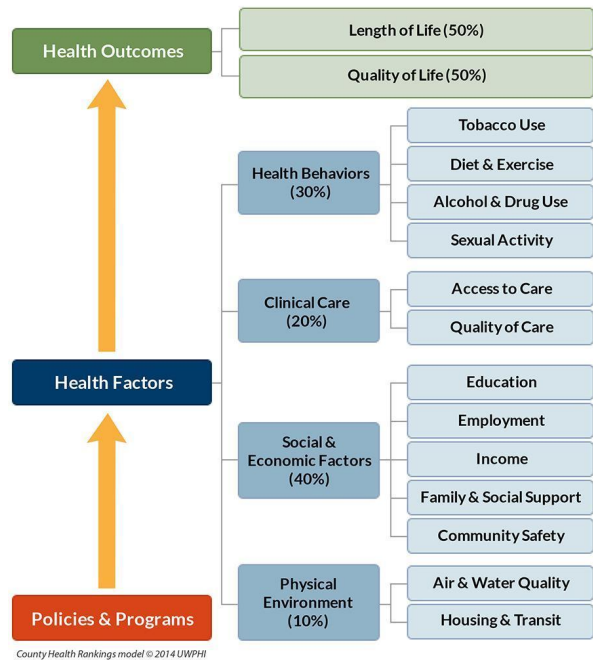
- Allegan County Health Department
- United Way of Ottawa and Allegan Counties
- Allegan County Multi-Agency County Council

The Allegan County Health Department facilitated the development, dissemination and analysis of the Allegan County Community Survey.

The United Way of Ottawa and Allegan Counties provided staff support and participation during the data collection and survey development.

The Allegan County MACC sponsored the virtual stakeholder forum, and its members were instrumental in disseminating the community survey to county residents and their networks. The MACC's mission is, "Through nonprofit capacity building and ecosystem strengthening, the Allegan County MACC works to promote effective collaboration and coordination among health and human service agencies, to enrich the lives of Allegan County residents."

There are approximately 65 active members of the MACC, representing the social service, non-profit, education, county government, law enforcement, and health sectors. The Allegan County MACC aims to strengthen the ecosystem of health and human services, enhance the capacity of its members, reduce or eliminate all barriers to service accessibility and service delivery, recognize and respect the diversity of the community, foster the healthy development of individuals and families in Allegan County through identification and reduction of risk factors and the enhancement or strengthening of healthy factors, and provide consistent monitoring of the health status of the community.



# **Allegan County 2022 CHNA**

## **Data Collection Methodology**

In collaboration with various community partners, the Allegan CHNA Collaborative collected and analyzed primary and secondary data for Allegan County. The following sections describe in detail the data collection efforts.

### **Summary of Community Input**

Recognizing its vital importance in understanding the health needs and assets of the community, the Allegan CHNA Collaborative consulted with a range of public health and social service providers that represent the broad interests of Allegan County. A concerted effort was made to ensure that the individuals and organizations represented the needs and perspectives of: 1) public health practice and research; 2) individuals who are medically underserved, are low-income, or considered among the minority populations served by the hospital; and 3) the broader community at large and those who represent the broad interests and needs of the community served.

Multiple methods were used to gather community input, including a community survey and meetings with the Allegan County MACC. These methods provided additional perspectives on how to select and address top health issues facing Allegan County. A summary of the process and results is outlined below.

### **Stakeholder Forum**

One large community stakeholder forum was sponsored by the Allegan County MACC and facilitated by consultant Mary Kushion to gather feedback from community members on the health needs and assets of Allegan County. Fourteen community stakeholders participated in the forum, held on March 23, 2022. Populations represented by participants included those with mental health challenges, infants, children and adolescents, the faith-based community, low-income, those seeking employment and job skill educational opportunities and victims of domestic violence. In addition, health, employers, public schools, non-profits, and the faith-based community sectors were represented at the forum.

## Allegan County 2022 CHNA

Stakeholder Forum	
Key Summary Points	
<ul style="list-style-type: none"> <li>● <b>2022 Community Health Needs Assessment Report is a collaborative effort to produce one report for Allegan County</b></li> <li>● <b>The COVID-19 pandemic has delayed many health improvement activities</b></li> <li>● <b>Availability of attainable housing within the county is a major issue</b></li> <li>● <b>Patient to provider ratios are too high</b></li> </ul>	
Populations/Sectors Represented	Common Themes
<ul style="list-style-type: none"> <li>● Allegan County Community Mental Health</li> <li>● Allegan County Great Start Collaborative</li> <li>● Allegan County Health Department</li> <li>● Allegan County Prevention Services</li> <li>● Allegan and Barry West Michigan Works!</li> <li>● Allegan County United Way</li> <li>● Arbor Circle Prevention Services</li> <li>● Community Action of Allegan County</li> <li>● Ascension Borgess Allegan Hospital</li> <li>● Ascension Michigan</li> <li>● Christian Neighbors</li> <li>● Lakeshore Habitat for Humanity</li> <li>● Michigan Rehabilitation Services</li> <li>● Plainwell Community Schools</li> <li>● Sylvia's Place</li> </ul>	<ul style="list-style-type: none"> <li>● County population has increased, but so has the cost of housing which is making it unattainable for many who work and reside in Allegan County</li> <li>● Access to health services is difficult and expensive</li> <li>● Need for mental and behavioral health services are increasing in demand</li> <li>● Need for additional shelters (both for the homeless and for victims of domestic violence)</li> <li>● Transportation is an issue related to distracted driving</li> </ul>
Meaningful Quotes	
<ul style="list-style-type: none"> <li>● <i>"So glad you're all here doing this-this is incredible information for Allegan County -thank you"</i></li> <li>● <i>"Attainable housing/homelessness is absolutely a 'look downstream' topic- glad we are looking at it"</i></li> <li>● <i>"I think the power will come from the collaboration and unity of the agencies within Allegan County"</i></li> </ul>	

### Surveys

In a coordinated effort of the Allegan CHNA Collaborative, a community survey was conducted by the Allegan County Health Department and disseminated by the health department and the MACC members and their networks to gather the perceptions, thoughts, opinions, and concerns of the

## Allegan County 2022 CHNA

community regarding health outcomes, health behaviors, social determinants of health, and clinical care for Allegan County. A total of 631 individuals participated in the survey, held between January 2022 and March 2022. The data gathered and analyzed provides valuable insight into the issues of importance to the community. The survey contained 39 questions and was distributed to Allegan County residents through both paper and electronic survey distribution methods.

Surveys	
Key Summary Points	
<ul style="list-style-type: none"> <li>● <b>Mental health impacts</b></li> <li>● <b>People going out of county for health services</b></li> <li>● <b>COVID-19 impacts</b></li> </ul>	
Populations/Sectors Represented	Common Themes
<ul style="list-style-type: none"> <li>● Allegan County Community Members</li> <li>● Allegan County Community Mental Health</li> <li>● Allegan County Great Start Collaborative</li> <li>● Allegan County Government</li> <li>● Allegan County Health Department</li> <li>● Allegan County Prevention Services</li> <li>● Allegan and Barry West Michigan Works!</li> <li>● Allegan County United Way</li> <li>● Arbor Circle Prevention Services</li> <li>● Community Action of Allegan County</li> <li>● Ascension Borgess Allegan Hospital</li> <li>● Christian Neighbors</li> <li>● Lakeshore Habitat for Humanity</li> <li>● Michigan Rehabilitation Services</li> <li>● Plainwell Community Schools</li> <li>● Sylvia's Place</li> </ul>	<ul style="list-style-type: none"> <li>● Top three factors influencing individual/household health and wellness:                             <ul style="list-style-type: none"> <li>○ Affordability of fresh foods</li> <li>○ Walk ability and bikeability</li> <li>○ Access to grocery stores that sell fresh foods</li> </ul> </li> <li>● Top three health concerns in community:                             <ul style="list-style-type: none"> <li>○ Mental and behavioral health</li> <li>○ Alcohol and drug use</li> <li>○ Obesity</li> </ul> </li> <li>● Top three community strengths:                             <ul style="list-style-type: none"> <li>○ Parks/green space</li> <li>○ Community safety</li> <li>○ Education</li> </ul> </li> </ul>
Meaningful Quotes	
<ul style="list-style-type: none"> <li>● Limited Doctors/ Limited Care</li> </ul>	



## Allegan County 2022 CHNA

- *"I've had trouble keeping a doctor for years now. They move and quit and go on leave. I never know who I'm going to get when I call."*
- *"A doctor that isn't too far away who treats me with respect and really listens to me. Kindness. Respect. Non-judgmental. Good listener. Know when to refer/not afraid to refer to another specialty or doctor. That is the kind of doctors we need in Allegan county." (this one was listed as a barrier to living a healthier lifestyle)*
- *"Lack of quality health care and services in our area."*
- *"It's difficult to find affordable services or coverage."*
- Access to grocery stores
  - *"With only one grocery store in Allegan, food supplies are limited."*
- COVID-19 impacts:
  - *"I avoid areas where people, I do not know, are not wearing masks or social distancing."*

Prior to the finalization of the CHNA report, a draft was shared and discussed with the MACC and a short, five-question survey was sent to the membership. During the meeting, the members expressed the desire to have additional populations of focus included in future CHNA survey processes such as those of Latino, Spanish and Tribal cultures. On-Pointe, the primary mental health services provider in the county, offered to partner with Ascension Borgess Allegan Hospital to develop and implement a coordinated action plan for the mental and behavioral health prioritized need.

A total of two survey responses were received and offered the following insights:

- 90% of pregnant mothers leave the county for prenatal services and 74% of children receive well child visits outside of Allegan County, according to survey results. This shows we lack enough providers for medical, dental, and mental health services.
- 44% of Allegan County children receive free/reduced lunches.
- No Wrong Door approach: We need to break down silos between agencies. Agencies should be collaborating with one another and referring families to the correct agency during their time of need. This prevents families from falling through the cracks within our complicated resource system.
- Better communications between agencies. Clearly established goals that motivate each of us to attend the meetings and fully participate in them. Intentional commitment and engagement.
- It seems every year that the same significant issues rise to the top as the most important. Ask the survey, "So What?" If an issue is important, how do we fix it? Do you put together an action plan after the results are published? Find more funding resources to accomplish goals. Engage the County Government and Chamber of Commerce to attract more doctors, dentists and clinics to Allegan County (not just businesses). Are there people who can advocate with Local and State legislatures to understand the needs of Allegan County?

To view community input data please go to [Data and Reports | Allegan County, MI](#). Community input received related to the CHNA is found in Appendix C (page 43).

## **Allegan County 2022 CHNA**

### **Summary of Secondary Data**

Secondary data is data that has already been collected and published by another party. Both governmental and non-governmental agencies routinely collect secondary data reflective of the health status of the population at the state and county level through surveys and surveillance systems. Secondary data was compiled from various reputable and reliable sources including: the County Health Rankings and Roadmaps (CHHR,) State of Michigan Vital Statistics, U.S. Census, Michigan Kids Count, and the Michigan Profile for Healthy Youth. It is also recognized that the County Health Rankings utilize most, if not all of the same data sources. As such, because the County Health Rankings are presented as a county-specific data set, the Allegan CHNA Collaborative is using the CHHR as its primary secondary data source. When an indicator was not present in the CHHR but important to the assessment, the specific data source is referenced.

The Allegan CHNA Collaborative's secondary data approach relies on the model developed by the CHHR and the Robert Wood Johnson Foundation, utilizing the determinants of health model as the model for community health improvement. Health indicators in the following categories were reviewed:

- Health Behaviors
- Clinical Care
- Social and Economic Factors
- Physical Environment

Overall, Allegan County is ranked among the healthiest counties in Michigan (Highest 75%-100%) for Health Outcomes and Health Factors.

The secondary data collected and analyzed through this assessment is referenced and highlighted in the significant needs tables in the Community Needs Section of this report. To view secondary data and sources in its entirety, see Appendix D (*page 44*).

### **Summary of COVID-19 Impact on Allegan County**

The COVID-19 pandemic has had an impact on communities world-wide. In the United States, urban communities took the hardest hit for both COVID cases and death. Profound disparities emerged as the pandemic grew. Older Americans have the highest risk of death from COVID than any other age group with 81% of deaths from COVID in people over 65 years of age. There are significant disparities by race and ethnicity as well. Americans of color have higher risk of exposure, infection and death compared to non-Hispanic White Americans.

Significant COVID-19 disparities include:

- Hispanic Persons at 2.3 times the risk of death
- non-Hispanic Black persons at 1.9 times the risk of death
- American Indian or Alaska Native at 2.4 times the risk of death

Some reasons for these differences include:

## Allegan County 2022 CHNA

- Multigenerational families
- Living in crowded housing with close physical contact
- Working in environments in which social distancing is not possible
- Inadequate access to health care
- Higher rates of underlying conditions

COVID-19 Impact on Allegan County (as of April 27, 2022)			
Indicator	Allegan	Michigan	Description
Confirmed Cases	24,170	2,111,375	
Total Deaths	295	33,126	
Case Fatality Percentage	1%	2%	Percent of total confirmed cases of individuals who died of COVID-19

Source: MDHHS <https://www.michigan.gov/Coronavirus>

### Community Input on Previous CHNA and Implementation Strategy

Ascension Borgess Allegan Hospital’s previous CHNA and implementation strategy were made available to the public and open for public comment via the website: [Community Health Needs Assessments | Ascension](#).

At the time of publication of this report, there were no public comments related to the 2019 CHNA reports produced by both Ascension Borgess Allegan Hospital and the Allegan County Health Department.

### Data Limitations and Information Gaps

Although it is quite comprehensive, this assessment cannot measure all possible aspects of health and cannot represent every possible population within Allegan County. This constraint limits the ability to fully assess all the community’s needs.

For this assessment, three types of limitations were identified:

- Some groups of individuals may not have been adequately represented through the community input process. Those groups, for example, may include individuals who are transient, who speak a language other than English, or who are members of the lesbian/gay/bisexual/transgender/queer+ community.
- Secondary data is limited in a number of ways, including timeliness, reach and descriptive ability with groups as identified above.
- An acute community concern may significantly impact a community’s ability to conduct portions of the CHNA assessment. An acute community concern is defined by Ascension as “an event or situation which may be severe and sudden in onset or newly affects a community”. These events may impact the ability to collect community input, may not be captured in secondary

## **Allegan County 2022 CHNA**

data, and/or can present in the middle of the three-year CHNA cycle. For the 2022 CHNA, the following acute community concerns were identified:

- COVID-19
- Inability to conduct assessment meetings in person due to social distancing
- Technology challenges which limited the type and number of survey participants given that it was a web-based survey rather than wide distribution of paper (hard-copy) surveys

Despite the data limitations, the Allegan CHNA Collaborative is confident of the overarching themes and health needs represented through the assessment data. This is based on the fact that the data collection included multiple methods, both qualitative and quantitative, and engaged the hospital as well as participants from the community.

## Allegan County 2022 CHNA

### Community Needs

The Allegan CHNA Collaborative, with contracted assistance from Mary Kushion Consulting, LLC., analyzed secondary data of over 50 indicators and gathered community input through community surveys and forums to identify the needs in Allegan County. The Collaborative used a phased prioritization approach to identify the needs. The first step was to determine the broader set of **identified needs**. Identified needs were then narrowed to a set of **significant needs** which were determined to be most crucial for community stakeholders to address.

Following the completion of the CHNA assessment, the Allegan CHNA Collaborative selected a subset of the significant needs as the hospital's, health department's and United Way's **prioritized needs** to develop a three-year implementation strategy. Although the Collaborative and their community partners such as the Healthy Allegan County Coalition (HACC) and MACC may address many needs, the prioritized needs will be at the center of a formal CHNA implementation strategy and corresponding tracking and reporting. Image 3 also describes the relationship between the needs categories.

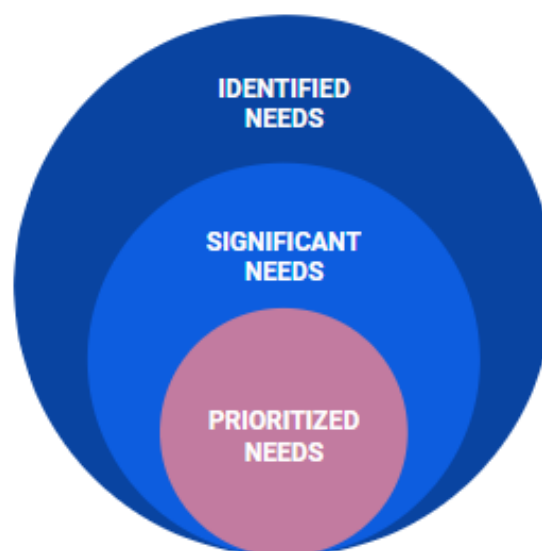


Image 3: Ascension Category of Community Needs

#### Identified Needs

Identified needs are defined as the health outcomes or related conditions (e.g., social determinants of health) impacting the health status of Allegan County. The identified needs were categorized into groups such as health behaviors, social determinants of health, length of life, quality of life, clinical care, and systemic issues in order to better develop measures and evidence-based interventions that respond to the determined condition.

#### Significant Needs

In collaboration with various community partners, the Collaborative utilized a three step approach to prioritize which of the identified needs were most significant. The community forum provided the participants the opportunity to brainstorm and present three issues that needed to be addressed in Allegan County. The Ascension staff member utilized an affinity diagramming process to group the brain-stormed issues into themes. The themes were presented to the forum participants who then, through a virtual nominal group process, ranked each of the themes to identify the significant needs. Significant needs are defined as the identified needs which have been deemed most significant to address based on established criteria and/or prioritization methods. The criteria used to identify the significant needs were:

## **Allegan County 2022 CHNA**

- Community Identified as Issue/Need to be Addressed
- Community Impact if Issue/Need is Addressed
- Urgency to Address the Issue/ Need

Through the prioritization process for the 2022 CHNA, the significant needs are as follows:

- **Mental and Behavioral Health**, including substance use disorder, addiction
- **Housing**
- **Lack of Healthcare Providers & Services**, including access to prenatal/perinatal care, broadband internet, availability of appointments, etc.
- **Health Behaviors/Preventative Health**, including Physical Activity
- **Food Security**, including access and availability of fresh foods
- **High Cost of Healthcare**, including insurance limitations
- **Income**, including poverty, inequality/ household income
- **Transportation Services**

To view the community assets and resources available to address the significant needs, please see Appendix E (page 51).

Descriptions (including data highlights, community challenges and perceptions, and local assets and resources) of the significant needs are on the following pages.

## Allegan County 2022 CHNA

<b>Mental and Behavioral Health, including substance use disorder/addiction</b>	
<b>Why is it Important?</b>	<b>Data Highlights</b>
<p>According to the World Health Organization, “Mental health is a state of well-being in which an individual realizes his or her own abilities, can cope with the normal stresses of life, can work productively and is able to make a contribution to his or her community.... Mental health is fundamental to our collective and individual ability as humans to think, emote, interact with each other, earn a living and enjoy life”. Source: <i>World Health Organization</i></p>	<ul style="list-style-type: none"> <li>● 17% of adults report having frequent mental distress as described by 4-or-more days of poor mental health per month (Source: <a href="#">Allegan County Michigan   County Health Rankings &amp; Roadmaps</a> 2022)</li> <li>● 17 people died of a drug overdose (Source: <a href="#">Michigan Substance Use Disorder Data Repository</a>, 2020)</li> <li>● 13 people died of opioid overdose (Source: <a href="#">Michigan Substance Use Disorder Data Repository</a>, 2020)</li> <li>● Adults report having 5.1 mentally unhealthy days reported in past 30-days (Source: <a href="#">Allegan County, Michigan   County Health Rankings &amp; Roadmaps</a> 2022)</li> <li>● Mental and Behavioral health was listed as the greatest health concern in the community survey (Source: <a href="#">Community Health Survey</a>)</li> <li>● 40.5% of survey participants considered their mental health worse than before the pandemic (Source: <a href="#">Community Health Survey</a>)</li> </ul>
<b>Local Assets &amp; Resources</b>	
<ul style="list-style-type: none"> <li>● Allegan County Community Mental Health (OnPoint)</li> <li>● The Red Project</li> <li>● Reach for Recovery</li> <li>● Arbor Circle Allegan Services</li> <li>● The ARC</li> <li>● People Helping People/Linking Center</li> <li>● Gryphon Place/2-1-1</li> <li>● Renewed Hope Health Clinic</li> <li>● Catholic Charities Diocese of Kalamazoo</li> <li>● Safe Harbor Children’s Advocacy Center</li> <li>● Reach for Recovery</li> <li>● Bethany Christian Services</li> <li>● Michigan Rehabilitation Services</li> </ul>	
<b>Individuals Who Are More Vulnerable</b>	<b>Community Challenges &amp; Perceptions</b>
<ul style="list-style-type: none"> <li>● All county residents are vulnerable</li> </ul>	<p>Stress and mental health problems were two of the most commonly listed general health issues that community members were currently dealing with.</p>

## Allegan County 2022 CHNA

Housing	
Why is it Important?	Data Highlights
<p>“Our homes, and those of our neighbors, play a critical role in shaping our health and the health of the whole community. Housing is related to health through several pathways. First, the safety and quality of our homes are correlated with health. Exposure to lead from pipes and paint can irreversibly harm brain and nervous system development. Improper insulation can expose occupants to extreme temperatures associated with increased mortality, especially among the very young, old, or sick. Asthma can be exacerbated by indoor allergens such as mold and dust and residential crowding has been linked to both physical illness (e.g., infectious disease) and psychological distress.” Source: <a href="#">County Health Rankings</a></p>	<ul style="list-style-type: none"> <li>● \$154,900.00 is the median value of owner-occupied housing units (Source: <a href="#">U.S. Census, April 2020 Estimates</a>)</li> <li>● 21% of households are Asset-Limited Income Constrained Employed (ALICE) (Source: <a href="#">United For Alice, 2019</a>)</li> <li>● 11% of households have at least 1-of-4 of the following severe housing problems: overcrowding, high housing costs, lack of kitchen facilities, or lack of plumbing facilities (Source: <a href="#">Allegan County, Michigan I County Health Rankings &amp; Roadmaps 2022</a>)</li> <li>● 7% of households spend 50% or more of their household income on housing causing severe cost burdens (Source: <a href="#">Allegan County, Michigan I County Health Rankings &amp; Roadmaps 2022</a>)</li> <li>● \$871.00 is the median gross rent (Source: <a href="#">U.S. Census, April 2020 Estimates</a>)</li> <li>● 3.1% of individuals surveyed said that a lack of housing options available has been a challenge as a result of the COVID-19 pandemic (Source: <a href="#">Community Health Survey</a>)</li> </ul>
Local Assets & Resources	
<ul style="list-style-type: none"> <li>● Community Action Allegan County</li> <li>● Habitat for Humanity</li> <li>● OnPoint</li> <li>● Gryphon Place/2-1-1</li> <li>● Allegan County Housing Assessment &amp; Resource Agency and Allegan County Local Planning Body</li> <li>● Lakeshore Habitat for Humanity</li> <li>● Catholic Charities Diocese of Kalamazoo</li> <li>● Sylvania's Place</li> <li>● MSU Extension</li> <li>● Community Action of Allegan County</li> <li>● Allegan Homeless Solutions</li> <li>● Volunteers of America</li> <li>● Salvation Army</li> <li>● Community Housing Advocates</li> </ul>	
Individuals Who Are More Vulnerable	Community Challenges & Perceptions
<ul style="list-style-type: none"> <li>● Persons without homes</li> <li>● Low income households</li> </ul>	<p>Lack of housing options available / Access to attainable housing needed.</p>



## Allegan County 2022 CHNA

<b>Access to Care (Healthcare Providers &amp; Services)</b>	
<b>Why is it Important?</b>	<b>Data Highlights</b>
<p>“Access to health services affects a person’s health and well-being. Regular and reliable access to health services can:</p> <ul style="list-style-type: none"> <li>● Prevent disease and disability</li> <li>● Detect and treat illnesses or other health conditions</li> <li>● Increase quality of life</li> <li>● Reduce the likelihood of premature (early) death</li> <li>● Increase life expectancy”</li> </ul> <p>Source: <a href="#">CDC Healthy People</a></p>	<ul style="list-style-type: none"> <li>● 4,540:1 is the Patient-to-Primary Care Provider Ratio (Source: <a href="#">Allegan County, Michigan I County Health Rankings &amp; Roadmaps</a> 2022)</li> <li>● 2,970:1 is the Patient-to-Dentists Ratio (Source: <a href="#">Allegan County, Michigan I County Health Rankings &amp; Roadmaps</a> 2022)</li> <li>● 1,050:1 is the Patient-to-Mental Health Provider Ratio (Source: <a href="#">Allegan County, Michigan I County Health Rankings &amp; Roadmaps</a> 2022)</li> <li>● 7% of the population under age 65 is uninsured (Source: <a href="#">Allegan County, Michigan I County Health Rankings &amp; Roadmaps</a> 2022)</li> <li>● 90.2% of applicable survey participants went out of Allegan County for prenatal services (Source: <a href="#">Community Health Survey</a>)</li> <li>● 74% of applicable survey participants went out of Allegan County for well-child visits. (Source: <a href="#">Community Health Survey</a>)</li> </ul>
<b>Local Assets &amp; Resources</b>	
<ul style="list-style-type: none"> <li>● Renewed Hope Health Clinic</li> <li>● Gun Lake Tribal Health</li> <li>● Intercare Community (FQHC)</li> <li>● BeWell Health</li> <li>● Holland Pediatric Associates</li> <li>● Ascension Borgess</li> <li>● UofM Health West- Wayland Family Practice</li> <li>● Holland Hospital Family Medicine</li> <li>● Perrigo Medical Center</li> <li>● JBS Occ. Health</li> <li>● Haworth Occ. Health</li> <li>● Allegan County Health Department</li> <li>● Macatawa Family Medicine</li> <li>● WellNow Urgent Care, Plainwell</li> <li>● Plainwell Urgent Care &amp; Telemedicine &amp; Rapid Testing</li> <li>● OnPoint</li> <li>● Gryphon Place 2-1-1</li> <li>● Renewed Hope Health Clinic</li> <li>● Association for Blind and Visually Impaired</li> <li>● Wings Home</li> <li>● Wings of Hope Hospice &amp; Palliative Care</li> </ul>	
<b>Individuals Who Are More Vulnerable</b>	<b>Community Challenges &amp; Perception</b>
<ul style="list-style-type: none"> <li>● Persons with no insurance</li> <li>● Low/no income persons</li> <li>● Persons with chronic conditions</li> </ul>	<ul style="list-style-type: none"> <li>● Quality of healthcare services available was one of the top three barriers to accessing healthcare for residents of Allegan County.</li> <li>● 90% of pregnant mothers leave the county for prenatal services and 74% of children receive well child visits outside of Allegan County, according to survey results. This shows we lack enough providers for medical, dental, and mental health services.</li> </ul>

## Allegan County 2022 CHNA

<b>Health Behaviors/Preventive Health</b>	
<b>Why is it Important?</b>	<b>Data Highlights</b>
<p>“Obesity can lead to type 2 diabetes, heart disease, and some cancers. A healthy diet and regular physical activity help people achieve and maintain a healthy weight starting at an early age and continuing throughout life.”            Source: <a href="#">CDC’s Healthy Communities Program - Preventing Chronic Diseases and Reducing Health Risk Factors</a></p> <p>“Alcohol intoxication is linked to injury, violence, and traffic crashes and chronic alcohol use increases the risk of liver damage and various cancers among other health harms.”            Source: <a href="#">National Institute on Alcohol Abuse and Alcoholism</a></p> <p>People who suffer from chronic diseases such as heart disease, stroke, diabetes, cancer, obesity, and arthritis experience limitations in function, health, activity, and work, affecting the quality of their lives as well as the lives of their families. Underlying these diseases and conditions are significant health risk factors such as tobacco use and exposure, physical inactivity, and poor nutrition.            Source: <a href="#">Centers for Disease Control and Prevention - How We Prevent Chronic Diseases and Promote Health</a></p>	<ul style="list-style-type: none"> <li>36% of adults are considered obese (Source: <a href="#">Allegan County, Michigan I County Health Rankings &amp; Roadmaps</a> 2022)</li> <li>28% are considered physically inactive due to lack of leisure time physical activities (Source: <a href="#">Allegan County, Michigan I County Health Rankings &amp; Roadmaps</a> 2022)</li> <li>5% of those living in Allegan County have limited access to healthy foods (Source: <a href="#">Allegan County, Michigan I County Health Rankings &amp; Roadmaps</a> 2022)</li> <li>46% have access to exercise opportunities (Source: <a href="#">Allegan County, Michigan I County Health Rankings &amp; Roadmaps</a> 2022)</li> <li>21% of adults engage in excessive drinking (Source: <a href="#">Allegan County, Michigan I County Health Rankings &amp; Roadmaps</a> 2022)</li> <li>19% of adults are current smokers (Source: <a href="#">Allegan County, Michigan I County Health Rankings &amp; Roadmaps</a> 2022)</li> <li>Survey participants' four highest general health issues consisted of being overweight, back or joint pain, stress, and mental health problems (depression/anxiety) (Source: <a href="#">Community Health Survey</a>)</li> <li>50.2% of residents surveyed said that they delayed getting care or annual screenings due to the COVID-19 pandemic (Source: <a href="#">Community Health Survey</a>)</li> <li>13.8% of surveyed individuals said they are currently overweight (Source: <a href="#">Community Health Survey</a>)</li> <li>30.4% of individuals surveyed said they have had 6 or more days in the last 30 days of bad physical health. (Source: <a href="#">Community Health Survey</a>)</li> </ul>
<b>Local Assets &amp; Resources</b>	
<ul style="list-style-type: none"> <li>Allegan County Health Department</li> <li>OnPoint</li> <li>Gryphon Place 2-1-1</li> <li>Renewed Hope Health Clinic</li> <li>Help Me Grow Allegan</li> <li>Great Start Collaborative</li> <li>Big Brothers/Big Sisters</li> <li>Forever Curious Children’s Museum</li> <li>Assoc. for Blind and Visually Impaired</li> <li>Arbor Circle</li> <li>Safe Harbor Children’s Advocacy Center</li> <li>Reach for Recovery</li> <li>People Helping People/Linking Center</li> </ul>	

## Allegan County 2022 CHNA

<ul style="list-style-type: none"> <li>• Community Action of Allegan County</li> <li>• Michigan Rehabilitation Services</li> </ul>	
<b>Individuals Who Are More Vulnerable</b>	<b>Community Challenges &amp; Perceptions</b>
<ul style="list-style-type: none"> <li>• Persons with limited mobility</li> <li>• Persons on limited/no income and ability to access healthy foods</li> <li>• Persons with addictive behaviors</li> </ul>	<p>“Waited until hospitals or doctor offices were less busy.” - resident who delayed seeking preventative health care during the COVID-19 pandemic.</p>

## Allegan County 2022 CHNA

Food Security	
Why is it Important?	Data Highlights
<p>“There is strong evidence that food deserts are correlated with high prevalence of overweight, obesity, and premature death as supermarkets traditionally provide healthier options than convenience stores or smaller grocery stores.] Additionally, those with low income may face barriers to accessing a consistent source of healthy food.</p> <p>Lacking consistent access to food is related to negative health outcomes such as weight gain, premature mortality, asthma, and activity limitations, as well as increased health care costs.” <a href="#">County Health Rankings and Roadmaps 2021</a></p>	<ul style="list-style-type: none"> <li>● Low-Income Allegan County Residents With Limited Access to a Grocery Store: 10% (Source: <a href="#">Allegan County Michigan I County Health Rankings &amp; Roadmaps 2022</a>)</li> <li>● All Allegan County Residents: 5% lack adequate access to food (Source: <a href="#">Allegan County Michigan I County Health Rankings &amp; Roadmaps 2022</a>)</li> <li>● Children Eligible for Free/Reduced Lunch: 44% (Source: <a href="#">Allegan County Michigan I County Health Rankings &amp; Roadmaps 2022</a>)</li> <li>● Affordability of fresh food was listed as the top factor that impacts the health and wellness of “you and your household” on the Community Health Survey (21.9%) (Source: <a href="#">Community Health Survey</a>)</li> <li>● Access to grocery stores that sell fresh foods was the third highest factor that impacted the health and wellness of “you and your household” on the Community Health Survey. (Source: <a href="#">Community Health Survey</a>)</li> </ul>
Local Assets & Resources	
<ul style="list-style-type: none"> <li>● Christian Neighbors</li> <li>● People Helping People Pullman</li> <li>● Allegan County Food Pantry Collaborative</li> <li>● Community Based Meals through local churches</li> <li>● School Backpack Food Programs</li> <li>● Gryphon Place 2-1-1</li> <li>● Community Action Agency of Allegan</li> <li>● Catholic Charities Diocese of Kalamazoo</li> <li>● Ladders of Hope Food Pantry</li> <li>● Project Hope</li> <li>● Hungry for Christ</li> </ul>	
Individuals Who Are More Vulnerable	Community Challenges & Perceptions
<ul style="list-style-type: none"> <li>● Low income/no income households</li> <li>● Persons without a household vehicle</li> </ul>	<ul style="list-style-type: none"> <li>● Need for affordable grocery stores with healthy food options was identified from comments left in the Community Health Survey</li> <li>● 44% of Allegan County children receive free/reduced lunches.</li> </ul>

## Allegan County 2022 CHNA

High Cost of Health Care	
<b>Why is it Important?</b>	<b>Data Highlights</b>
Healthcare costs can directly impact those who need the services. If the cost rises, more will be left without, or will not seek out needed treatments or medication.	<ul style="list-style-type: none"> <li>● Note: Quantitative data at the county level is not available.</li> <li>● Nearly 3 in 5 (57%) Michigan adults experienced healthcare affordability burdens in the past year (Source: <a href="#">Altarum, 2022</a>)</li> <li>● Nearly 4 in 5 (78%) Michigan adults worry about affording healthcare in the future (Source: <a href="#">Altarum, 2022</a>)</li> <li>● Half (51%) of Michigan adults reported delaying or foregoing healthcare during the prior 12 months due to cost</li> <li>● Of those that responded to the <a href="#">Community Health Survey</a> and were dissatisfied with the healthcare system overall, the majority of responses were due to the cost of insurance and cost of healthcare being too expensive (39.7%)</li> </ul>
<b>Local Assets &amp; Resources</b>	
<ul style="list-style-type: none"> <li>● Gryphon Place/2-1-1</li> <li>● Renewed Hope Health Clinic</li> </ul>	
<b>Individuals Who Are More Vulnerable</b>	<b>Community Challenges &amp; Perceptions</b>
<ul style="list-style-type: none"> <li>● Persons without health insurance</li> <li>● Persons with lower household income</li> <li>● Unemployed persons</li> </ul>	<ul style="list-style-type: none"> <li>● Insurance limitations, health care too expensive or inability to pay, and quality of health care services available were the top three barriers to accessing healthcare for residents in Allegan County.</li> </ul>

## Allegan County 2022 CHNA

Income	
Why is it Important?	Data Highlights
<p>People living in poverty are less likely to have access to health care, healthy food, stable housing, and opportunities for physical activity. These disparities mean people living in poverty are more likely to die from preventable diseases. Source: <a href="#">Healthy People 2030</a></p> <p>“Most adults spend nearly half their waking hours at work. Working in a safe environment with fair compensation often provides not only income, but also benefits such as health insurance, paid sick leave, and workplace wellness programs that, together, support opportunities for healthy choices. Those who are unemployed face even greater challenges to health and well-being, including lost income and, often, health insurance. Unemployed individuals are 54% more likely to be in poor or fair health than individuals who are employed, and are more likely to suffer from increased stress, high blood pressure, heart disease, and depression.” Source: <a href="#">County Health Rankings</a></p>	<ul style="list-style-type: none"> <li>● The median household income is below the state median income (\$65,071 for Allegan County and \$57,144 for Michigan) (Source: <a href="#">U.S. Census</a>, April 2020 Estimates)</li> <li>● 21% of households are Asset-Limited Income Constrained Employed (ALICE) households. (Source: <a href="#">United for Alice</a>, 2019)</li> <li>● 15.4% have a mortgage payment that is more than 35% of their income; 32% of those who rent have a monthly rental cost that is 35% more than their income (Source: <a href="#">U.S. Census Data</a>, April 2020 Estimates)</li> <li>● The percent of all ages of people in poverty was lower to the state (7.3% for Allegan County and 12.6% for Michigan) (Source: <a href="#">U.S. Census</a>, April 2020 Estimates)</li> <li>● The uninsured rate for Allegan County is the same as the state at 7% (Source: <a href="#">Allegan County, Michigan   County Health Rankings &amp; Roadmaps</a> 2022)</li> <li>● 8% of people under age 18 (children) are living in poverty. (Source: <a href="#">Allegan County, Michigan   County Health Rankings &amp; Roadmaps</a> 2022)</li> <li>● 4.1% of households do not have a vehicle (Source: <a href="#">U.S. Census Data</a>, April 2020 Estimates)</li> </ul>
Local Assets & Resources	
<ul style="list-style-type: none"> <li>● West Michigan Works!</li> <li>● Gryphon Place/2-1-1</li> <li>● Christian Neighbors</li> <li>● Project Hope</li> </ul>	
Individuals Who Are More Vulnerable	Community Challenges & Perceptions
<ul style="list-style-type: none"> <li>● Persons without HS Diploma</li> <li>● Teen parents</li> <li>● Persons without a vehicle</li> </ul>	<p>High costs of healthcare and high cost of living have created challenges for some residents with lower income expressed in the Community Health Survey.</p>

## Allegan County 2022 CHNA

Transportation	
Why is it Important?	Data Highlights
<p>“Because transportation touches many aspects of a person’s life, adequate and reliable transportation services are fundamental to healthy communities. Transportation issues can affect a person’s access to health care services. These issues may result in missed or delayed health care appointments, increased health expenditures and overall poorer health outcomes. Transportation also can be a vehicle for wellness. Developing affordable and appropriate transportation options, walkable communities, bike lanes, bike-share programs and other healthy transit options can help boost health.” Source: <a href="#">American Hospital Association</a></p>	<ul style="list-style-type: none"> <li>● 4.1% of households do not have a vehicle (Source: <a href="#">U.S. Census Data</a>, April 2020 Estimates)</li> <li>● Percent of employed who drive alone to work: 84% (Source: <a href="#">Allegan County Michigan I County Health Rankings &amp; Roadmaps 2022</a>)</li> <li>● Percent of employed who have a 30 minute or more commute to work: 34% (Source: <a href="#">Allegan County Michigan I County Health Rankings &amp; Roadmaps 2022</a>)</li> <li>● 24% of all driving deaths involved alcohol. (Source: <a href="#">Allegan County Michigan I County Health Rankings &amp; Roadmaps 2022</a>)</li> <li>● 22.08% of residents surveyed said that they experience transportation barriers at least a few times a year or more. (Source: <a href="#">Community Health Survey</a>)</li> </ul>
Local Assets & Resources	
<ul style="list-style-type: none"> <li>● Allegan County Transportation (ACT)</li> <li>● Gryphon Place/2-1-1</li> <li>● Community Action Of Allegan County</li> </ul>	
Individuals Who Are More Vulnerable	Community Challenges and Perceptions
<ul style="list-style-type: none"> <li>● Persons without access to a vehicle</li> <li>● Persons who live in areas with no transportation</li> <li>● Persons who travel for work</li> <li>● Persons who have limited income for gas/vehicle maintenance</li> </ul>	<p>When asked for their top community strengths, transportation was the lowest ranked of all options in the community health survey.</p>

## Allegan County 2022 CHNA

### Prioritized Needs

Following the completion of the community health assessment, the Allegan CHNA Collaborative has selected the prioritized needs outlined below for its 2022 CHNA (2021 Ascension Tax Year) implementation strategy. The Collaborative chose these needs using urgency, community stakeholder identification and potential for impact as the selection criteria. Prioritized needs are defined as the significant needs which have been prioritized by the Collaborative to address through the three-year CHNA implementation strategy:

- **Mental and Behavioral Health** - This need was selected because “mental health is essential to a person’s well-being, healthy family and interpersonal relationships, and the ability to live a full and productive life. People, including children and adolescents, with untreated mental health disorders are at high risk for many unhealthy and unsafe behaviors, including alcohol or drug abuse, violent or self-destructive behavior, and suicide. Mental health disorders also have a serious impact on physical health and are associated with the prevalence, progression, and outcome of some of today’s most pressing chronic diseases.”<sup>1</sup>
- **Housing** - This need was selected because people’s homes can have a major impact on their health and well-being. Some people struggle to pay for their homes or rental housing. This is linked to worse mental health and an increased risk of disease.<sup>2</sup> Housing instability encompasses a number of challenges, such as having trouble paying rent, overcrowding, moving frequently, staying with relatives, or spending the bulk of household income on housing. These experiences may negatively affect physical health and make it harder to access health care.<sup>3</sup>
- **Food Security** - This need was selected because adults who are food insecure may be at an increased risk for a variety of negative health outcomes and health disparities. Food-insecure children may also be at-risk for a variety of negative health outcomes, including obesity. In addition, reduced frequency, quality, variety, and quantity of consumed foods may have a negative effect on children’s mental health.<sup>4</sup>
- **Access to Care (Healthcare Providers and Services)** - This need was selected because this need ranked high in the process and criteria used to determine the most urgent and appropriate priority needs for the community. Access to preventive health care can prevent both disease and early death. Interventions to increase access to health care are one of many Healthy People 2030 objectives.

The Allegan CHNA Collaborative understands the importance of all the health needs of the community and is committed to playing an active role in improving the health of the people in the communities it

---

<sup>1</sup> <https://www.healthypeople.gov/2020/leading-health-indicators/2020-lhi-topics/Mental-Health>

<sup>2</sup> Keene, D.E., Cowan, S.K., & Castro Baker, A. (2015). “When You’re in a Crisis Like That, You Don’t Want People to Know”: Mortgage Strain, Stigma, and Mental Health. *American Journal of Public Health*, 205(5), 1008-1012.

<sup>3</sup> Kushel MB, Gupta R, Gee L, Haas JS. Housing instability and food insecurity as barriers to health care among low-income Americans. *J Gen Intern Med*. 2006;21(1):71-7. doi: 10.1111/j.1525-1497.2005.00278.x.

<sup>4</sup> [Food Insecurity - Healthy People 2030 | health.gov](#)



## **Allegan County 2022 CHNA**

serves. For the purposes of this CHNA, the Collaborative has chosen to focus its efforts on the priorities listed above.

The significant needs not selected as priority needs during this CHNA cycle are:

- **Health Behaviors/Preventative Health**, including Physical Activity
- **High Cost of Healthcare**, including insurance limitations
- **Income**, including poverty, inequality/ household income
- **Transportation Services**

While the four remaining significant needs were not selected as prioritized needs, it is recognized that within Allegan County initiatives are underway to promote healthy behaviors and physical activity and increased access to transportation services.

Both High Cost of Healthcare and Income were discussed, but determined by the Collaborative to be issues that could not be resolved within the networks and resources available within the county and were larger statewide issues needing attention and focus.

## Allegan County 2022 CHNA

### Summary of Impact from the Previous Ascension Borgess Allegan CHNA Implementation Strategy

An important piece of the three-year CHNA cycle is revisiting the progress made on priority needs set forth in the preceding CHNA. By reviewing the actions taken to address the significant needs and evaluating the impact those actions have made in the community, it is possible to better target resources and efforts during the next CHNA cycle.

Highlights from the Ascension Borgess Allegan's previous implementation strategy include:

- Access to Mental Health Services: New Licensed Medical Social Worker joined the Ascension Borgess Allegan Hospital Behavioral Health staff - Dec. 2020; two additional virtual platforms implemented for virtual behavioral health appointments; relationship building with Allegan County Community Mental Health (ACCMH) to explore use of Ascension Medical Group providers in ACCMH.
- Alcohol and Drug Use: Rural Health Clinic providers are working with care management to utilize local resources via the new "findhelp.org" platform, which allows real-time location of patient resources; in partnership with Allegan County Health Department to ensure appropriate referrals. Coordinating with Mary Free Bed & MSU Extension for education opportunities; creation of Ascension standard controlled substance policies and orders.
- Transportation: Numerous meetings took place to educate management on the Ascension Borgess Allegan Foundation resources, as well as published newsletter articles for associates; over 2K invested by the Foundation for transportation needs; data gathering for transportation needs for patients is being utilized by Allegan County for their expanded transportation infrastructure project.

A full evaluation of our efforts to address the significant health needs identified in the 2019 CHNA can be found in Appendix F (page 56). There was no community input received for the 2019 CHNA.

## **Allegan County 2022 CHNA**

### **Approval by Ascension Borgess Allegan Board of Trustees**

To ensure the Ascension Borgess Allegan Hospital's efforts meet the needs of the community and have a lasting and meaningful impact, the 2022 CHNA was presented to the Ascension Borgess Allegan Hospital Board of Trustees for approval and adoption on June 28, 2022. Although an authorized body of the hospital must adopt the CHNA and implementation strategy reports to be compliant with the provisions in the Affordable Care Act, adoption of the CHNA also demonstrates that the board is aware of the findings from the community health needs assessment, endorses the priorities identified, and supports the strategy that has been developed to address prioritized needs.

### **Approval by Allegan County Board of Commissioners**

To ensure the Allegan County Health Department's efforts meet the needs of Allegan County and have a lasting and meaningful impact, the 2022 CHNA was presented to the Allegan County Board of Commissioners on June 23, 2022. The presentation of the CHNA demonstrates that the board is aware of the findings from the community health needs assessment, the priorities identified and the strategy that has been developed to address prioritized needs.

## Allegan County 2022 CHNA

### Conclusion

The purpose of the CHNA process is to develop and document key information on the health and wellbeing of the communities Ascension Borgess Allegan Hospital, Allegan County Health Department and the United Way of Ottawa and Allegan Counties serve. This report will be used by internal stakeholders, non-profit organizations, government agencies, and other community partners of Ascension Borgess Allegan to guide the implementation strategies and community health improvement efforts as required by the Affordable Care Act. The 2022 CHNA will also be made available to the broader community as a useful resource for further health improvement efforts.

The Allegan CHNA Collaborative hopes this report offers a meaningful and comprehensive understanding of the most significant needs for residents of Allegan County.

As a Catholic health ministry, Ascension Borgess Allegan Hospital is dedicated to spiritually centered, holistic care that sustains and improves the health of not only individuals, but the communities it serves. With special attention to those who are poor and vulnerable, we are advocates for a compassionate and just society through our actions and words. Ascension Borgess Allegan Hospital is dedicated to serving patients with compassionate care and medical excellence, making a difference in every life we touch.

United Way of Ottawa and Allegan Counties envisions a community in which every individual is able to achieve their full human potential and strives to improve the lives of Allegan County residents in the areas of education, health, and financial stability. Data drives our collaborative efforts to develop and implement impactful solutions and engage the community in this work. We know that change doesn't happen alone and that to live better, we must Live United. We are proud to partner with Ascension Borgess Allegan Hospital and the Allegan County Health Department to create the Allegan County Community Health Needs Assessment, a vital tool in helping to identify the community's most pressing needs and guide the allocation of resources and mobilization of volunteer efforts.

Allegan County Health Department (ACHD) is committed to its purpose statement: together; striving for a healthier Allegan County. ACHD will continue its efforts in partnering with agencies across the community to address barriers and social determinants of health. ACHD continues to promote a safe, clean and healthy environment in which to live, work, and play for all community members within Allegan County.

# Allegan County 2022 CHNA

## Appendices

### Table of Contents

Appendix A: Definitions and Terms

Appendix B: Community Demographic Data and Sources

Appendix C: Community Input Data and Sources

Appendix D: Secondary Data and Sources

Appendix E: Health Care Facilities and Community Resources

Appendix F: Evaluation of Impact From Previous CHNA Implementation Strategy

# Allegan County 2022 CHNA

## Appendix A: Definitions and Terms

### **Acute Community Concern**

An event or situation which may be severe and sudden in onset, or newly affects a community. This could describe anything from a health crisis (e.g., COVID-19, water poisoning) or environmental events (e.g. hurricane, flood) or other event that suddenly impacts a community. The framework is a defined set of procedures to provide guidance on the impact (current or potential) of an acute community concern. Source: Ascension Acute Community Concern Assessment Framework

### **Collaborators**

Third-party, external community partners who are working with the hospital to complete the assessment. Collaborators might help shape the process, identify key informants, set the timeline, contribute funds, etc.

### **Stakeholder/Community Forums**

Meetings that provide opportunities for community members/stakeholders to provide their thoughts on community problems and service needs. Community/stakeholder forums can be targeted towards priority populations. These forums require a skilled facilitator.

### **Community Served**

A hospital facility may take into account all the relevant facts and circumstances in defining the community it serves. This includes: The geographic area served by the hospital facility; Target populations served, such as children, women, or the aged; and Principal functions, such as a focus on a particular specialty area or targeted disease.

### **Consultants**

Third-party, external entities paid to complete specific deliverables on behalf of the hospital (or coalition/collaborators); alternatively referred to as vendors.

### **Demographics**

Population characteristics of your community. Sources of information may include population size, age structure, racial and ethnic composition, population growth, and density.

Source: CHA Assessing and Addressing Community Need, 2015 Edition II

### **Identified Need**

Health outcomes or related conditions (e.g., social determinants of health) impacting the health status of the community served

### **Medically Underserved Populations**

Medically Underserved Populations include populations experiencing health disparities or that are at risk of not receiving adequate medical care because of being uninsured or underinsured, or due to geographic, language, financial, or other barriers. Populations with language barriers include those with limited English proficiency.

Medically underserved populations also include those living within a hospital facility's service area but not receiving adequate medical care from the facility because of cost, transportation difficulties, stigma, or other barriers.

Source:

<https://www.irs.gov/charities-non-profits/community-health-needs-assessment-for-charitable-hospitalorganizations-section-501r3>

### **Prioritized Need**

Significant needs which have been selected by the hospital to address through the CHNA implementation strategy

## **Allegan County 2022 CHNA**

### **Significant Need**

Identified needs which have been deemed most significant to address based on established criteria and/or prioritization methods

### **Surveys**

Used to collect information from community members, stakeholders, providers, and public health experts for the purpose of understanding community perception of needs. Surveys can be administered in person, over the telephone, or using a web-based program. Surveys can consist of both forced-choice and open-ended questions. Source: CHA Assessing and Addressing Community Need, 2015 Edition II

## Allegan County 2022 CHNA

### Appendix B: Community Demographic Data and Sources

The tables below provide a description of the community’s demographics. The descriptions of the importance of the data are largely drawn from the CHHR website and the U.S. Census data.

#### Population

Why it is important: The composition of a population, including related trends, is important for understanding the community context and informing community planning.

Population	Allegan County	Michigan	U.S.
Total	120,502	10,077,331	331,893,745
Male	50%	49.3%	49.2%
Female	50%	50.7%	50.8%

*Data source: U.S. Census; April 2020 Estimates*

#### Population by Race or Ethnicity

Why it is important: The race and ethnicity composition of a population is important in understanding the cultural context of a community. The information can also be used to better identify and understand health disparities.

Race or Ethnicity	Allegan County	Michigan	U.S.
Asian	0.9%	3.4%	5.9%
Black / African American	1.6%	14.1%	13.4%
Hispanic / Latino	7.5%	5.3%	18.5%
Native American	0.7%	0.7%	1.3%
White	94.9%	79.2%	76.3%

*Data source: U.S. Census; April 2020 Estimates*

#### Population by Age

Why it is important: The age structure of a population is important in planning for the future of a community, particularly for schools, community centers, healthcare and child care. A population with more youth will have greater education needs and child care needs, while an older population may have greater healthcare needs.

Age	Allegan County	Michigan	U.S.
-----	----------------	----------	------



## Allegan County 2022 CHNA

Median Age	39.8	39.7	38.1
Age 0-17	29.9%	27.2%	28.3%
Age 18-64	53.1%	55.1%	55.2%
Age 65+	17%	17.7%	16.5%
<i>Data source: &lt;U.S. Census; April 2020 Estimates &gt;;<a href="#">Data Commons</a></i>			

### Income

Why it is important: Median household income and the percentage of children living in poverty, which can compromise physical and mental health, are well-recognized indicators. People with higher incomes tend to live longer than people with lower incomes. In addition to affecting access to health insurance, income affects access to healthy choices, safe housing, safe neighborhoods and quality schools. Chronic stress related to not having enough money can have an impact on mental and physical health. ALICE, an acronym for Asset Limited, Income Constrained, Employed, are households that earn more than the U.S. poverty level, but less than the basic cost of living for the county. Combined, the number of poverty and ALICE households equals the total population struggling to afford basic needs.

Income	Allegan County	Michigan	U.S.
Median Household Income	\$62,965.00	\$57,144.00	\$62,843.00
Per Capita Income	\$29,215.00	\$31,713.00	\$34,103.00
People with incomes below the federal poverty guideline	7.3%	12.6%	11.4%
ALICE Households	21%	25%	29%
<i>Data source: U.S. Census; April 2020 Estimates; <a href="#">Unitedforalice.org</a></i>			

### Education

Why is it important: There is a strong relationship between health, lifespan and education. In general, as income increases, so does lifespan. The relationship between more schooling, higher income, job opportunities (e.g., pay, safe work environment) and social support, help create opportunities for healthier choices.

Education	Allegan County	Michigan	U.S.
High School grad or higher	90.9%	90.8%	88%

## Allegan County 2022 CHNA

Bachelor's degree or higher	22.6%	29.1%	32.1%
<i>Data source: &lt;U.S. Census; April 2020 Estimates &gt;</i>			

### Insured/Uninsured

Why it is important: Lack of health insurance can have serious health consequences due to lack of preventive care and delays in care that can lead to serious illness or other health problems.

Income	Allegan County	Michigan	U.S.
Uninsured	7.1%	6.9%	10.2%
Medicaid Eligible	16%	19%	*See note below
<i>Data source: U.S. Census; April 2020 Estimates</i> <a href="https://www.michigan.gov/2021-annual-report-total-eligible-recipients-by-program">2021 Annual Report Total Eligible Recipients by Program (michigan.gov)</a>			

**\*Due to the varying eligibility requirements and levels (Expanded versus Non-Expanded) at the state level, the U.S. does not calculate the percentage of Medicaid Eligible persons.**

## Allegan County 2022 CHNA

### Appendix C: Community Input Data and Sources

<b>What does the data tell you about the current issues in Allegan County? Tell us the Top 3 current issues you believe need to be addressed in Allegan County</b>	
<ul style="list-style-type: none"> <li>● Education (including high school and post-secondary education completion, and/or disconnected youth)</li> <li>● Food security, including access and availability of fresh foods</li> <li>● High cost of healthcare, including insurance limitations</li> <li>● Income, including poverty, inequality/household income</li> <li>● Housing</li> </ul>	<ul style="list-style-type: none"> <li>● Lack of healthcare providers and services including access to prenatal/perinatal care, broadband internet, availability of appointments</li> <li>● Transportation services</li> <li>● Mental and Behavioral health services, including substance use disorder, addiction</li> <li>● Health behaviors/Preventive health, including physical activity</li> </ul>
<b>Which Identified Needs are most important to address in Allegan County over the next 3-years? Rank each of the Identified Needs in order of most important (5) to least important (1) to address</b>	
<ol style="list-style-type: none"> <li>1. Housing (55)</li> <li>2. Mental and behavioral health, including substance use disorder (55)</li> <li>3. Lack of healthcare providers and services (30)</li> <li>4. Income, including poverty, inequality (30)</li> <li>5. Food security (25)</li> <li>6. Transportation (20)</li> <li>7. High cost of healthcare, including insurance limitations (15)</li> <li>8. Health behaviors/Preventative health, including physical activity (10)</li> <li>9. Education, including high school and post-secondary education completion (10)</li> </ol>	

## Allegan County 2022 CHNA

### Appendix D: Secondary Data and Sources

In a coordinated effort of the Allegan CHNA Collaborative, a community survey was conducted by the Allegan County Health Department and disseminated by the Allegan CHNA Collaborative members, health department and the MACC members and their networks to gather the perceptions, thoughts, opinions, and concerns of the community regarding health outcomes, health behaviors, social determinants of health, and clinical care for Allegan County. A total of 631 individuals participated in the survey, held between January 2022 and March 2022. The data gathered and analyzed provides valuable insight into the issues of importance to the community. The survey contained 39 questions and was distributed to Allegan County residents through both paper and electronic survey distribution methods. The survey results can be viewed at [Allegan County Community Health Survey Report](#)

The tables below are based on data vetted, compiled and made available on the CHRR website (<https://www.countyhealthrankings.org/>). The site is maintained by the University of Wisconsin Population Health Institute, School of Medicine and Public Health, with funding from the Robert Wood Johnson Foundation. CHRR obtains and cites data from other public sources that are reliable. CHRR also shares trending data on some indicators.

CHRR compiles new data every year and shares it with the public in April. The data below is from the 2022 publication. It is important to understand that reliable data is generally two to three years behind due to the importance of careful analysis. NOTE: Data in the charts does not reflect the effects that the COVID-19 pandemic has had on communities.

#### How To Read These Charts

**Why they are important:** Explains why we monitor and track these measures in a community and how it relates to health. The descriptions of 'why they are important' are largely drawn from the CHRR website as well.

**County vs. State:** Describes how the county's most recent data for the health issue compares to the state of Michigan.

**Trending:** CHRR provides a calculation for some measures to explain if a measure is worsening or improving.

- Red: The measure is worsening in this county.
- Green: The measure is improving in this county.
- Empty: There is no data trend to share or the measure has remained the same.

**Top US Counties:** The best 10 percent of counties in the country. It is important to compare data not just with Michigan but important to know how the best counties are doing and how Allegan county compares.

## Allegan County 2022 CHNA

**Description:** Explains what the indicator measures, how it is measured, and who is included in the measure.

**n/a:** Not available or not applicable. There may not be available data for the community on every measure. Some measures will not be comparable.

### Health Outcomes

Why they are important: Health outcomes reflect how healthy a county is right now. They reflect the physical and mental well-being of residents within a community.

Indicators	Trend	Allegan County	Michigan	Top US Counties	Description
<b>Length of Life</b>					
Premature Death		6,900	7,900	5,600	Years of potential life lost before age 75 per 100,000 population (age-adjusted)
Life Expectancy		78.2	77.5	80.6	How long the average person should live.
Infant Mortality		5	6	4	Number of all infant deaths (within 1 year) per 1,000 live births.
<b>Physical Health</b>					
Poor or Fair Health		18%	18%	15%	Percent of adults reporting fair or poor health.
Poor Physical Health Days		4.2	4.2	3.4	Average number of physically unhealthy days reported in past 30 days (age-adjusted).
Frequent Physical Distress		13%	13%	10%	Percent of adults 14 or more days of poor physical health per month.
Low Birth Weight		7%	9%	6%	Percent of babies born too small (less than 2,500 grams).
<b>Mental Health</b>					
Poor Mental Health Days		5.1	5.2	4.0	Average number of mentally unhealthy days reported in the past 30 days.
Frequent Mental Distress		17%	17%	13%	Percent of adults reporting 14 or more days of poor mental health per month.
Suicide		16	14	11	Number of deaths due to suicide per 100,000.
<b>Morbidity</b>					
Diabetes prevalence		9%	10%	8%	Percent of adults aged 20 and above with diagnosed diabetes.

## Allegan County 2022 CHNA

Communicable Disease					
HIV Prevalence		128	196	38	Number of people aged 13 years and over with a diagnosis of HIV per 100,000.
Sexually Transmitted Infections		341.3	501.7	161.8	Number of newly diagnosed chlamydia cases per 100,000.
<i>Source: <a href="#">Allegan County, Michigan   County Health Rankings &amp; Roadmaps</a> 2022</i>					

Healthcare Access					
Uninsured		7%	7%	6%	Percentage of population under age 65 without health insurance.
Uninsured Adults		8%	8%	7%	Percentage of adults under age 65 without health insurance.
Uninsured children		4%	3%	3%	Percentage of children under age 19 without health insurance.
Primary Care Physicians		4,540:1	1,250:1	1,010:1	Ratio of population to primary care physicians.
Other Primary Care Providers		2,770:1	800:1	580:1	Ratio of the population to primary care providers other than physicians.
Mental Health Providers		1,050:1	330:1	250:1	Ratio of the population to mental health providers.
Hospital Utilization					
Preventable Hospital Stays		3,149	4,357	2,233	Rate of hospital stays for ambulatory-care sensitive conditions per 100,000 Medicare enrollees.
Preventative Healthcare					
Flu Vaccinations		41%	47%	55%	Percentage of fee-for-service (FFS) Medicare enrollees that had an annual flu vaccination.
Mammography Screenings		41%	45%	52%	Percentage of female Medicare enrollees ages 65-74 that received an annual mammography screening.
<i>Source: <a href="#">Allegan County, Michigan   County Health Rankings &amp; Roadmaps</a> 2022)</i>					

### Social and Economic Factors

Why they are important: These factors have a significant effect on our health. They affect our ability to make healthy decisions, afford medical care, afford housing and food, manage stress and more.

## Allegan County 2022 CHNA

Indicators	Trend	Allegan County	Michigan	Top US Counties	Description
<b>Economic Stability</b>					
Median Household Income		\$63,700	\$61,400	\$75,100	Income where half of households in a county earn more and half of households earn less.
Unemployment		7.3%	9.9%	4.0%	Percentage of population ages 16 and older unemployed but seeking work.
Childhood Poverty		8%	17%	9%	Percentage of people under age 18 in poverty.
<b>Educational Attainment</b>					
High School Completion		91%	91%	94%	Percentage of ninth grade cohort that graduates in four years.
Some College		59%	69%	74%	Percentage of adults ages 25-44 with some post-secondary education.
<b>Social/Community</b>					
Children in single-parent homes		19%	26%	14%	Percentage of children that live in a household headed by a single parent.
Social Associations		10.4	9.7	18.1	Number of membership associations per 10,000 population.
Disconnected Youth		10%	7%	4%	Percentage of teens and young adults ages 16-19 who are neither working nor in school.
Juvenile Arrests		21	24	n/a	Rate of delinquency cases per 1,000 juveniles.
Violent Crime		246	443	63	Number of reported violent crime offenses per 100,000 population.
<b>Access to Healthy Foods</b>					
Food Environment Index		8.4	7.1	8.8	Index of factors that contribute to a healthy food environment, 0-worst 10-best.
Food Insecurity		10%	13%	9%	Percent of the population who lack adequate access to food.
Limited Access to Healthy Foods		5%	6%	2%	Percent of the population who are low-income and do not live close to a grocery store.
Source: <a href="#">Allegan County, Michigan   County Health Rankings &amp; Roadmaps</a> 2022)					

## Allegan County 2022 CHNA

### Physical Environment

Why it is important: The physical environment is where people live, learn, work, and play. The physical environment impacts our air, water, housing and transportation to work or school. Poor physical environment can affect our ability and that of our families and neighbors to live long and healthy lives.

Indicators	Trend	Allegan County	Michigan	Top US Counties	Description
<b>Physical Environment</b>					
Severe housing cost burden		7%	12%	7%	Percentage of households that spend 50% or more of their household income on housing.
Severe Housing Problems		11%	14%	9%	Percentage of households with at least 1 of 4 housing problems: overcrowding, high housing costs, lack of kitchen facilities, or lack of plumbing facilities.
Air Pollution - Particulate Matter		7.6	7.4	5.9	Average daily density of fine particulate matter in micrograms per cubic meter (PM2.5).
Homeownership		84%	72%	81%	Percentage of occupied housing units that are owned.
Source: <a href="#">Allegan County, Michigan   County Health Rankings &amp; Roadmaps</a> 2022)					

### Clinical Care

Why it is important: Access to affordable, quality care can help detect issues sooner and prevent disease. This can help individuals live longer and have healthier lives.

Indicators	Trend	Allegan County	Michigan	Top US Counties	Description
<b>Healthcare Access</b>					
Uninsured		7%	7%	6%	Percentage of population under age 65 without health insurance.
Uninsured Adults		8%	8%	7%	Percentage of adults under age 65 without health insurance.
Uninsured children		4%	3%	3%	Percentage of children under age 19 without health insurance.
Primary Care Physicians		4,540:1	1,250:1	1,010:1	Ratio of population to primary care physicians.
Other Primary Care Providers		2,770:1	800:1	580:1	Ratio of the population to primary care providers other than physicians.
Mental Health Providers		1,050:1	330:1	250:1	Ratio of the population to mental health providers.



## Allegan County 2022 CHNA

Hospital Utilization					
Preventable Hospital Stays		3,149	4,357	2,233	Rate of hospital stays for ambulatory-care sensitive conditions per 100,000 Medicare enrollees.
Preventative Healthcare					
Flu Vaccinations		41%	47%	55%	Percentage of fee-for-service (FFS) Medicare enrollees that had an annual flu vaccination.
Mammography Screenings		41%	45%	52%	Percentage of female Medicare enrollees ages 65-74 that received an annual mammography screening.
<i>Source: <a href="#">Allegan County, Michigan   County Health Rankings &amp; Roadmaps</a> 2022</i>					

### Health Behaviors

Why they are important: Health behaviors are actions individuals take that can affect their health. These actions can lead to positive health outcomes or they can increase someone’s risk of disease and premature death. It is important to understand that not all people have the same opportunities to engage in healthier behaviors.

Indicators	Trend	Allegan County	Michigan	Top US Counties	Description
Healthy Life					
Adult Obesity		36%	36%	30%	Percentage of the adult population (age 20 and older) that reports a body mass index (BMI) greater than or equal to 30 kg/m2.
Physical Inactivity		28%	25%	23%	Percentage of adults age 20 and over reporting no leisure-time physical activity.
Access to Exercise Opportunities		46%	77%	86%	Percentage of population with adequate access to locations for physical activity.
Insufficient Sleep		37%	40%	32%	Percentage of adults who report fewer than 7 hours of sleep on average.
Motor Vehicle Crash Deaths		14	10	9	Number of motor vehicle crash deaths per 100,000 population.
Substance Use and Misuse					
Adult Smoking		19%	20%	15%	Percentage of adults who are current smokers.
Excessive Drinking		21%	20%	15%	Percentage of adults reporting binge or heavy drinking.

## Allegan County 2022 CHNA

Alcohol-Impaired Driving Deaths		24%	29%	10%	Percent of Alcohol-impaired driving deaths.
<b>Sexual Health</b>					
Teen Births		17	17	11	Number of births per 1,000 female population ages 15-19.
Sexually Transmitted Infections		341.1	501.7	161.8	Number of newly diagnosed chlamydia cases per 100,000 population.
<b>Source:</b> <a href="#">Allegan County, Michigan   County Health Rankings &amp; Roadmaps</a> 2022					

## Allegan County 2022 CHNA

### Appendix E: Community Assets and Resources

As part of the CHNA process, the Allegan CHNA Collaborative has cataloged resources available in Allegan County that address the significant needs identified in this CHNA. Resources may include acute care facilities (hospitals), primary and specialty care clinics and practices, mental health providers, and other non-profit services.

The resources listed under each significant need heading are not intended to be exhaustive.

#### Mental and Behavioral Health

Organization Name	Phone	Website
On Point (Allegan County Community Mental Health)	269-686-5124	onpointallegan.org
Gryphon Place/2-1-1	269-381-1510	gryphon.org
Renewed Hope Health Clinic	269-355-3053	renewedhopehealth.org
Catholic Charities Diocese of Kalamazoo	269-381-9800	ccdok.org
Arbor Circle	269-673-1896	arborcircle.org
Safe Harbor Children's Advocacy Center	269-673-3791	safeharborcac.org
Reach for Recovery	616-396-5284	reachforrecovery.org
Red Project	616-456-9063	redproject.org
People Helping People/Linking Center	269-236-2001	phppullman.org
The Allegan County Resource Center	269-673-8841	arcalleagan.org
Bethany Christian Services	269-512-6300	bethany.org
Michigan Rehabilitation Services	616-395-8495	michigan.gov

## Allegan County 2022 CHNA

### Housing

Organization Name	Phone	Website
On Point	269-686-5124	onpointallegan.org
Gryphon Place/2-1-1	269-381-1510	gryphon.org
Allegan County Housing Assessment and Resource Agency and Allegan County Local Planning Body	269-686-4703	homelessshelterdirectory.org/shelter/mi_hara-allegan-mi
Lakeshore Habitat for Humanity	616-399-7006	lakeshorehabitat.org
Catholic Charities Diocese of Kalamazoo	269-381-9800	ccdok.org
Sylvia's Place	269-673-8700	sylviasplace.com
MSU Extension	269-673-0370	canr.msu.edu
Community Action of Allegan County	269-673-5472	communityactionallegan.org

### Access to Care (Healthcare Providers and Services)

Organization Name	Phone	Website
Ascension Borgess Allegan Hospital	269-673-8424	healthcare.ascension.org
On Point	269-686-5124	onpoint.org
Gryphon Place/2-1-1	269-381-1510	gryphon.org
Renewed Hope Health Clinic	269-355-3053	renewedhopehealth.org
Assoc. for Blind and Visually Impaired	616-458-1187	abvimichigan.org
Wings Home	269-686-9232	wingshome.org
Wings of Hope Hospice	269-686-8659	wingsofhopehospice.com
Gun Lake Tribal Health	269-397-1760	gunlaketribe-nsn.gov
BeWell Health	269-792-2263	be-wellhealth.net
Intercare Community (FQHC)	855-869-6900	intercare.org

## Allegan County 2022 CHNA

HollandPediatric Associates	616-393-0166	hollandpediatrics.com
U of M Health West- Wayland Family Practice	616-252-3400	uofmhealthwest.org
Holland Hospital Family Medicine	616-392-8035	hollandhospital.org
Perrigo Medical Center	269-673-9000	NA
JBS Occupational Health	269-685-6886	jbsfoodsgroup.com
Haworth Occupational Health	616-393-3000	haworth.com
Allegan County Health Department	269-673-5411	allegancounty.org/health
Macatawa Family Medicine	616-393-8100	NA
Wellnow Urgent Care, Plainwell	269-204-3025	wellnow.com
Plainwell Urgent Care and Telemedicine & Rapid Testing	269-680-3710	urgentcareplainwellmi.com

### Health Behaviors/Preventive Care

Organization Name	Phone	Website
Allegan County Health Dept	269-673-5411	allegancounty.org/health
OnPoint	269-686-5124	onpointallegan.org
Gryphon Place/ 2-1-1	269-381-1510	gryphon.org
Renewed Hope Health Clinic	269-355-3053	renewedhopehealth.org
Help Me Grow Allegan	269-512-7775	helpmegrowallegan.org
Great Start Collaborative	269-512-7700	alleganaesa.org
Big Brothers/Big Sisters	269-382-6800	bbbsmi.org
Forever Curious Children's Museum	269-561-8494	forevercuriousmuseum.org
Assoc. for Blind and Visually Impaired	616-458-1187	abvimichigan.org
Arbor Circle	269-673-1896	arborcircle.org
Safe Harbor Children's Advocacy	269-673-3791	safeharborcac.org

## Allegan County 2022 CHNA

Center		
Reach for Recovery	616-396-5284	reachforrecovery.org
People Helping People/Linking Center	269-236-2001	phppullman.org
Community Action of Allegan County	269-673-5472	communityactionallegan.org

### Food Security

Organization Name	Phone	Website
Gryphon Place/2-1-1	269-381-1510	<a href="http://gryphon.org">gryphon.org</a>
Christian Neighbors	269-685-4166	<a href="http://Christianneighbors.org">Christianneighbors.org</a>
People Helping People Pullman	269-236-2001	<a href="http://phppullman.org">phppullman.org</a>
Community Action Agency of Allegan	269-673-5472	<a href="http://communityactionallegan.org">communityactionallegan.org</a>
Catholic Charities Diocese of Kalamazoo	269-381-9800	<a href="http://ccdok.org">ccdok.org</a>
Ladders of Hope Food Pantry	269-455-9452	<a href="http://laddersofhopemi.org">laddersofhopemi.org</a>
Allegan County Food Pantry Collaborative	269-686-6369	<a href="http://allegancountyfoodpantry.org">allegancountyfoodpantry.org</a>
Project Hope	616-681-4673	<a href="http://projecthope-dorr.org">projecthope-dorr.org</a>
Hungry for Christ	269-264-1307	<a href="http://hungryforChrist.org">hungryforChrist.org</a>

### High Cost of Healthcare

Organization Name	Phone	Website
Gryphon Place 2-1-1	269-381-1510	<a href="http://gryphon.org">gryphon.org</a>
Renewed Hope Health Clinic	269-355-3053	<a href="http://renewedhopehealth.org">renewedhopehealth.org</a>

### Income

Organization Name	Phone	Website
-------------------	-------	---------

## Allegan County 2022 CHNA

Gryphon Place/2-1-1	269-381-1510	<a href="http://gryphon.org">gryphon.org</a>
Christian Neighbors	269-685-4166	<a href="http://Christianneighbors.org">Christianneighbors.org</a>
West Michigan Works!	269-686-5079	<a href="http://westmichiganworks.org">westmichiganworks.org</a>
Project Hope	616-681-4673	<a href="http://projecthope-dorr.org">projecthope-dorr.org</a>

### Transportation Services

Organization Name	Phone	Website
Allegan County Transportation (ACT)	(269) 673-4229	<a href="https://www.allegancounty.org/departments/transportation-services">https://www.allegancounty.org/departments/transportation-services</a>
Gryphon Place 2-1-1	269-381-1510	<a href="http://gryphon.org">gryphon.org</a>
Community Action of Allegan County	269-673-5472	<a href="http://communityactionallegan.org">communityactionallegan.org</a>

## Allegan County 2022 CHNA

### Appendix F: Evaluation of Impact from the Previous CHNA Implementation Strategy

Ascension Borgess Allegan Hospital’s previous CHNA implementation strategy was completed in July 2019, and addressed the following priority health needs: Access to Mental Health Services, Alcohol and Drug Abuse, Weight/Obesity, and Transportation.

The table below describes the actions taken during the 2019-2021 CHNA to address each priority need and indicators of improvement.

Note: At the time of the report publication (e.g., Spring), the third year of the cycle will not be complete. Individual ministries will accommodate that variable.

PRIORITY NEED	Access to Mental Health Services	
ACTIONS TAKEN	STATUS OF ACTIONS	RESULTS
Partner with Ascension Borgess Hospital DeLano Clinic to build capacity at Ascension Borgess Allegan Hospital Psychological Medicine to expand access to behavioral health services by adding additional practitioners and implementing a tele-behavioral health program	Complete	<ul style="list-style-type: none"> <li>● New Licensed Medical Social Worker joined the Ascension Borgess Allegan Hospital behavioral health staff in December 2020</li> <li>● Two additional virtual platforms implemented for virtual behavioral health appointments’</li> <li>● Relationship building with Allegan County Community Mental Health (ACCMH) to explore use of the Ascension Medical Group provider time for treating mental health patients while at ACCMH visits. ACCMH is working to build-out a central location and provide access to medical care for their patients across the street from Ascension Borgess Allegan Hospital.</li> </ul>

PRIORITY NEED	Alcohol and Drug Abuse	
ACTIONS TAKEN	STATUS OF ACTIONS	RESULTS
Work with primary care providers to better utilize resources available to assist patients with alcohol and drug addictions	Complete	<ul style="list-style-type: none"> <li>● Rural Health Clinic providers are working with care management to appropriately direct patients to local resources via a new platform “findhelp.org.” This platform allows for real-time location of patient</li> </ul>



## Allegan County 2022 CHNA

<p>Collaborate with Michigan State University (MSU) Extension Office to provide education related to opioid use in rural communities</p>		<p>resources near where the patient lives or works.</p> <ul style="list-style-type: none"> <li>● Partnership with Allegan County Health Department to ensure that patients have been referred for substance abuse counseling and services.</li> <li>● Coordinating with Mary Free Bed Rehabilitation Hospital for controlled substance patient treatment and recommendations.</li> <li>● Creation of Ascension standard controlled substance policies and order sets. There is now a workgroup addressing roll-out to the hospital's ambulatory areas.</li> <li>● New care manager at the four rural health clinics at Ascension Borgess Allegan, actively working with providers.</li> <li>● Allegan County Community Mental Health (ACCMH) made a presentation on January 19, 2021, during an Ascension Borgess Allegan Hospital provider meeting. The referral process for Allegan County patients for substance abuse and the process for screening, authorizing and contracting out (if needed) was discussed.</li> <li>● A part-time social worker, joined the Ascension Borgess Allegan Hospital Rural Health Clinics in the fall of 2020, assisting patients both virtually and in person.</li> </ul> <ul style="list-style-type: none"> <li>● A meeting was held in February 2021 with MSU Extension to discuss education opportunities.</li> <li>● Community seminars are still on hold due to the Covid-19 pandemic. Planning is on hold until larger "in-person" meetings can take place again per Ascension and MSU guidelines.</li> <li>● MSU Extension offered a statewide webinar for healthcare providers in April 2021 titled "Michigan Substance Use Prevention, Education, and Recovery." Ascension Borgess Allegan Hospital shared the information with staff throughout the organization and encouraged attendance.</li> </ul>
--	--	---

## Allegan County 2022 CHNA

PRIORITY NEED	Weight/Obesity	
ACTIONS TAKEN	STATUS OF ACTIONS	RESULTS
Collaborate with Healthy Allegan County Coalition (HACC) to increase access to weight reduction programs/services for individuals living with excess weight in Allegan County	In progress	<ul style="list-style-type: none"> <li>• HACC has not met due to the Covid-19 pandemic, and Ascension Borgess Allegan Hospital has reached out to the Allegan County Health Department and Allegan County Parks and Recreation, as well as the United Way to determine if there are existing or planned programs related to weight management/obesity that the hospital might adopt, offer to patients or become a partner</li> <li>• Ascension Borgess Allegan Hospital is working with the Allegan County Health Department to develop a household survey for distribution to Allegan County residents in January 2022 that will collect demographic questions and solicit information related to health, environment, human services, transportation, basic needs, etc.</li> </ul>

PRIORITY NEED	Transportation	
ACTIONS TAKEN	STATUS OF ACTIONS	RESULTS
Promote to Ascension Borgess Allegan Hospital associates the funding options available through the Ascension Borgess Allegan Foundation to assist patients with transportation needs.	Complete	<ul style="list-style-type: none"> <li>• Initial meetings took place between Ascension Borgess Allegan Hospital administration and Allegan County administration with standing meetings occurring monthly to address the transportation needs of patients and the community.</li> <li>• Data is being collected by the hospital and provided to Allegan County related to patient transportation needs, no call/no-shows for appointments, and barriers to care. The data will be utilized to design strategies for Allegan county as they invest in an expanded transportation infrastructure over the year</li> <li>• Hospital associates have been introduced to the Ascension Borgess Allegan Foundation patient funds available. Communication was shared through the internal associate newsletter, focused primarily on patient transportation needs and how to utilize Allegan Taxi for</li> </ul>

## Allegan County 2022 CHNA

		<p>emergency patient transport, as well as Allegan County Transportation (ACT) for scheduled visits.</p> <ul style="list-style-type: none"><li>• Over \$2,000 has been invested by the Ascension Borgess Allegan Foundation over the last two years for transportation needs.</li><li>• Jenifer Garcia, Foundation Executive Director, has met with Kelly Raymond, the new case manager for Allegan Rural Health Clinic, updating her on the transportation assistance available through the Foundation.</li><li>• Jenifer also has met with RestorixHealth staff, who recently took over management of the Wound &amp; Hyperbaric Center, to let them know about the transportation assistance available through the Foundation.</li><li>• Conversation with Dan Wedge, Executive Director for Allegan County Services to learn more on the impact of the 2020 county millage and Headly override.</li></ul>
--	--	---