



COVID-19 AND OTHER EMERGING PUBLIC HEALTH TOPICS

BOARD OF COMMISSIONER UPDATE

JULY 28, 2022

Data as of July 25, 2022

CONTENTS

EXECUTIVE SUMMARY	2
COVID-19 MITIGATION COMPONENTS	2
ENHANCED ABILITY TO TEST	3
COUNTY-LEVEL DATA AS OF JULY 18, 2022	3
TEST AVAILABILITY	3
NEW:	4
ROBUST CASE INVESTIGATION AND CONTACT TRACING	4
ALLEGAN COUNTY COVID-19 COMMUNITY LEVEL: LOW.....	4
OVERVIEW OF COVID-19 CASES AND DEATHS IN THE LAST TWO WEEKS (7/8/2022 to 7/21/22)	4
CASE INVESTIGATION.....	5
EXPOSURE LETTERS AND CLOSE CONTACTS	6
OUTBREAKS & CLUSTERS IN ALLEGAN COUNTY	6
LONG TERM CARE & OTHER CONGREGATE CARE FACILITIES	7
SUFFICIENT HEALTH CARE CAPACITY	7
HOSPITALIZATIONS	7
DEATHS (7-DAY AVERAGE).....	8
BEST PRACTICES	8
SCHOOLS	8
BUSINESSES.....	8
Monkeypox	8
COMMUNICATIONS	8
Monkeypox Prevention.....	8
FREE PRESCHOOL & KINDERGARTEN ENTRANCE HEARING & VISION SCREENINGS.....	9
COMMUNITY VACCINATION/HERD IMMUNITY/TREATMENT	9
NOVAVAX COVID-19 VACCINE: APPROVED	10
STAYING UP-TO-DATE ON COVID-19 VACCINATIONS	10
COVID-19 VACCINE COVERAGE.....	10
Vaccination Coverage by Age Group.....	10
Vaccination Coverage by Zip Code.....	11
VACCINE AVAILABILITY	11
VACCINE EFFECTIVENESS	11
Local Health Department Breakthrough Data Distribution	12
COVID-19 SURVEILLANCE	12
EPIDEMIOLOGIC SURVEILLANCE	15
SOURCES	18
APPENDICES	19

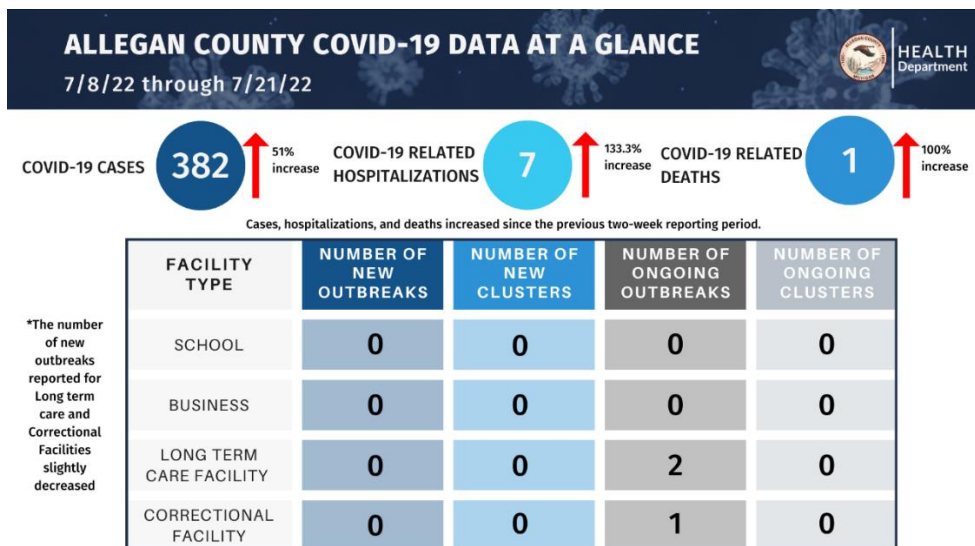
EXECUTIVE SUMMARY

The following report contains COVID-19 related data from **July 8, 2022, to July 21, 2022**, on the 5 mitigation components Allegan County Health Department (ACHD) previously identified. This report contains local COVID-19 data for Allegan County, information on the **now approved** Novavax vaccine, wastewater surveillance, emerging variant updates, and other resources regarding COVID-19 mitigation. This report also contains epidemiological surveillance and health education on other ongoing and emerging public health topics including monkeypox prevention and education, and other regional epidemiological topics at a quick glance. ACHD continues to monitor local, statewide, and global COVID-19 data, and continues to follow the Michigan Department of Health and Human Services (MDHHS) and the Centers for Disease Control and Prevention (CDC) recommendations.

WHAT'S NEW AT A GLANCE:

- Novavax COVID-19 Vaccine Approved
- Importance of staying up-to-date on vaccines during BA.5 variant
- Allegan County COVID-19 Test Positivity rate trending upward again after a 3-week downward trend
- Allegan County COVID-19 cases up 51% from the previous reporting period
- Allegan County remains in a low COVID-19 community level but surrounding counties may be in a medium or high community level and extra precautions are recommended
- [CDC updated Monkeypox Educational Resources](#) and MDHHS's new [Monkeypox Resource page](#)

An overview of COVID-19 data in Allegan County from **7/8/22 to 7/21/22** can be found in the graphic below:



Previous BOC reports that may include background information for some of the topics discussed in this current report can be found [here](#).

COVID-19 MITIGATION COMPONENTS



Allegan County currently is at a low community transmission level for COVID-19. **ACHD continues to recommend the following:**

- Staying up-to-date on your COVID-19 vaccines
- Getting tested if you have symptoms, before and after traveling, and before gathering with others.

Allegan County COVID-19 Community Level: Low

Allegan County Health Department recommends everyone to:

Stay up to date on your COVID-19 Vaccines

Get tested if you have symptoms

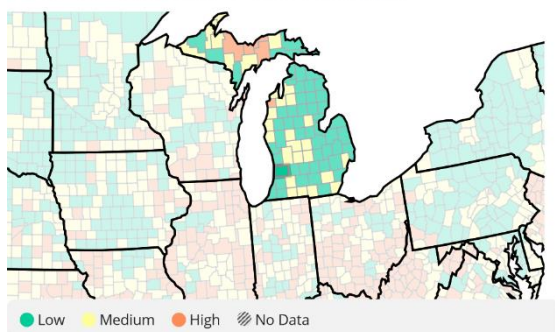
Actions including social distancing, frequent handwashing, wearing a well-fitted face mask, and isolation/quarantine help lessen the level of transmission

Learn more about CDC's COVID-19 Community Levels [here](#).

#DoYourPart

COVID-19 Community Levels are a tool to help communities decide what prevention steps to take based on the latest data. These Community Levels can be low, medium, or high and **are determined by looking at hospital bed utilization, hospital admissions, and the total number of new COVID-19 cases in an area.** Find more about COVID-19 Community Levels [here](#).

COVID-19 Community Levels in Michigan

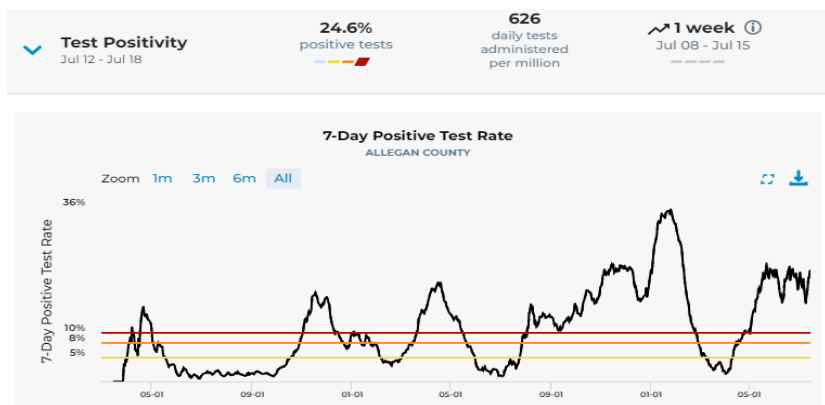


Note: Counties surrounding Allegan County may be in a medium or high COVID-19 Community Level. If you work or visit other counties often, make sure to take precautions to protect yourself and others such as wearing a mask, washing your hands often, staying home if you feel sick, and social distancing when possible.

Use the CDC's [COVID-19 County Check tool](#) to find out what community level the county you will be visiting is in.

ENHANCED ABILITY TO TEST

COUNTY-LEVEL DATA AS OF JULY 18, 2022



The Test Positivity Rate for Allegan County is now trending **upward** again after a 3-week downward trend. The new omicron variant, BA.5 appears to be driving positivity rates up. **The 7-day positivity rate for Allegan County as of July 18 was 24.6% with 626 daily tests administered per million. This indicates a 5% increase in the 7-day positivity compared to the 6/28/2022 to 7/4/2022 reporting period, which had 570.2 daily tests administered per million.**

TEST AVAILABILITY

Data as of July 25, 2022



At this time, at-home tests are not reported in the Michigan Disease Surveillance System (MDSS) and therefore, are not included in the test positivity rates or case counts. **See the Appendix for a list of testing resources available to community members.**

NEW:

Residents in qualifying zip codes can order a second round of free at-home COVID-19 test kits from Project ACT at AccessCovidTests.org. This is in addition to other free test

kits available from covidtests.gov, and [pick-up locations in Allegan County](#).

ROBUST CASE INVESTIGATION AND CONTACT TRACING

ALLEGAN COUNTY COVID-19 COMMUNITY LEVEL: LOW

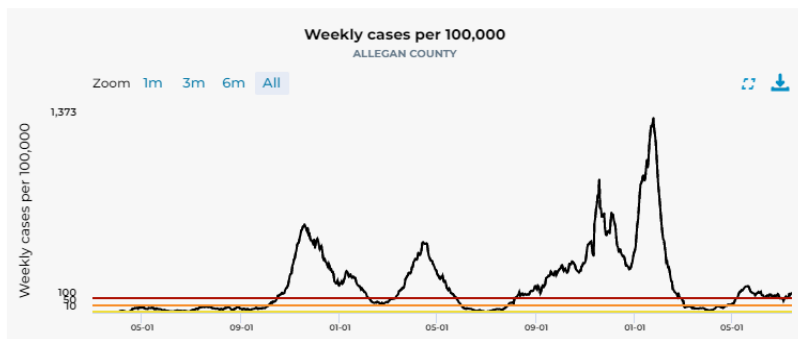
✓ **New Cases**
 Jul 12 - Jul 18

158.4
 weekly cases per 100,000 population

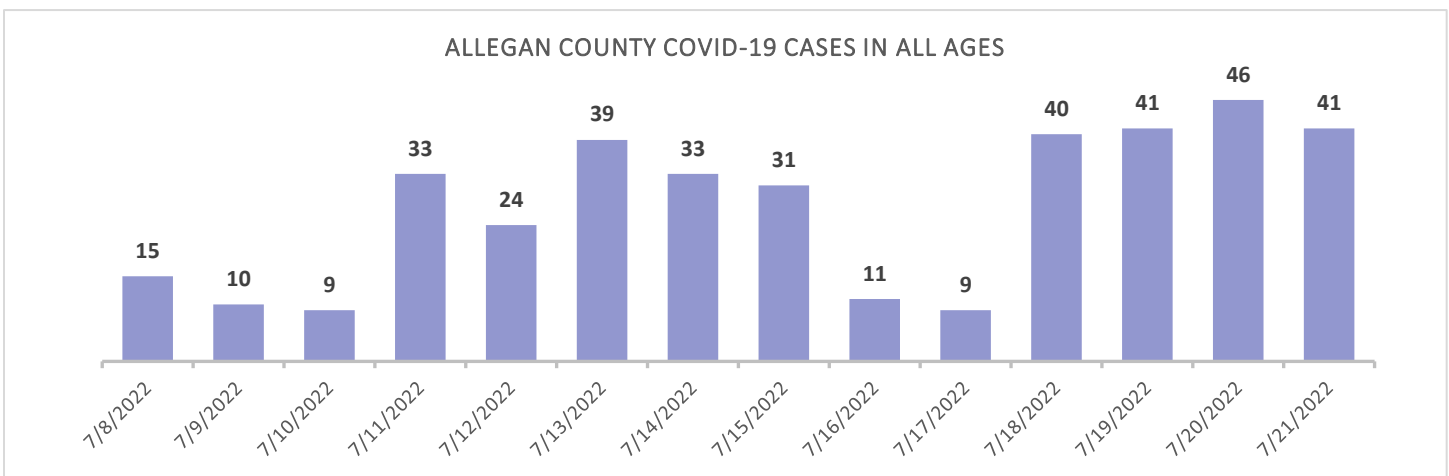
187
 weekly cases

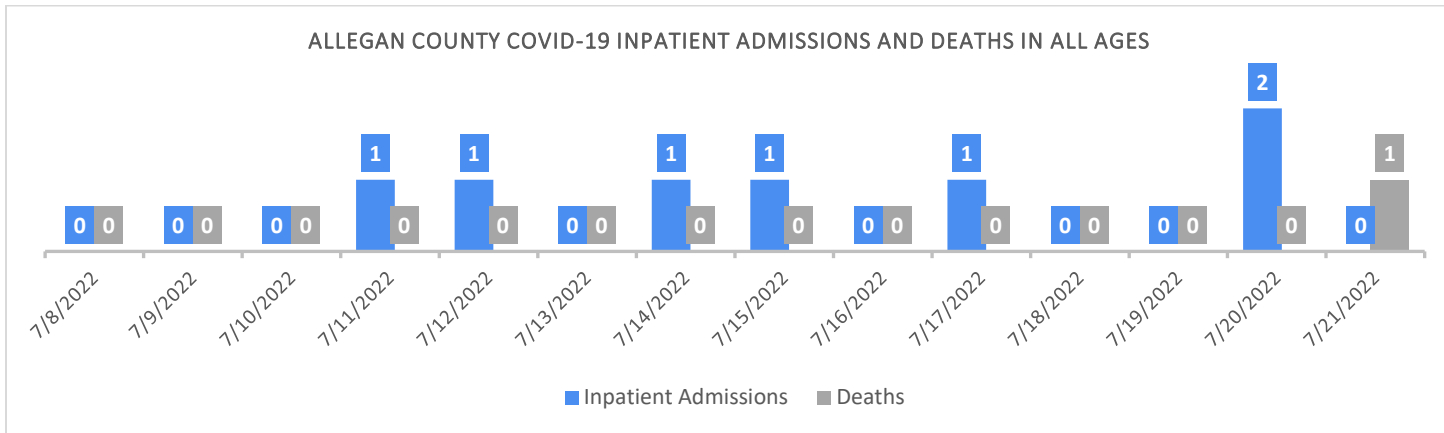
As of 7/18/2022, Allegan County remained at a low COVID-19 community level based on the CDC framework. **Models showed a significant increase in cases compared to the 6/28/2022 to 7/4/2022 reporting period. During the period 7/12/2022 to 7/18/2022, Allegan County's new weekly case rate was 158.4 per 100,000 population with 187 weekly cases.**

Weekly cases nearly doubled with a 46% increase since the 6/28/2022 to 7/4/2022 reporting period (84.7 per 100,000 - 100 weekly cases).



OVERVIEW OF COVID-19 CASES AND DEATHS IN THE LAST TWO WEEKS (7/8/2022 to 7/21/22)





DURING 7/8/2022 TO 7/21/2022 FOR ALLEGAN COUNTY:

- **382 total cases** were reported via the Michigan Disease Surveillance System (MDSS)
 - o 258 confirmed cases and 124 probable cases related to SARS-CoV2 infection as reported
- 16.8% of the cases were reported in the 40 to 49 age group, which had the highest number of cases during this timeframe
- **Seven reported hospitalizations** related to SARS-CoV-2 infection; majority of inpatient admissions were reported in individuals aged 70+ years
- **One reported death** related to SARS-CoV-2 infection
- 8.4% of the cases were reported to be related to international, domestic, and/or in-state travel
- From 7/7/2022 to 7/20/2022, **positivity rate¹** was a reported 23.79%
- Cases, hospitalizations, and deaths related to SARS-CoV-2 infection are currently showing increases, which is synonymous with statewide trends for COVID-19 metrics

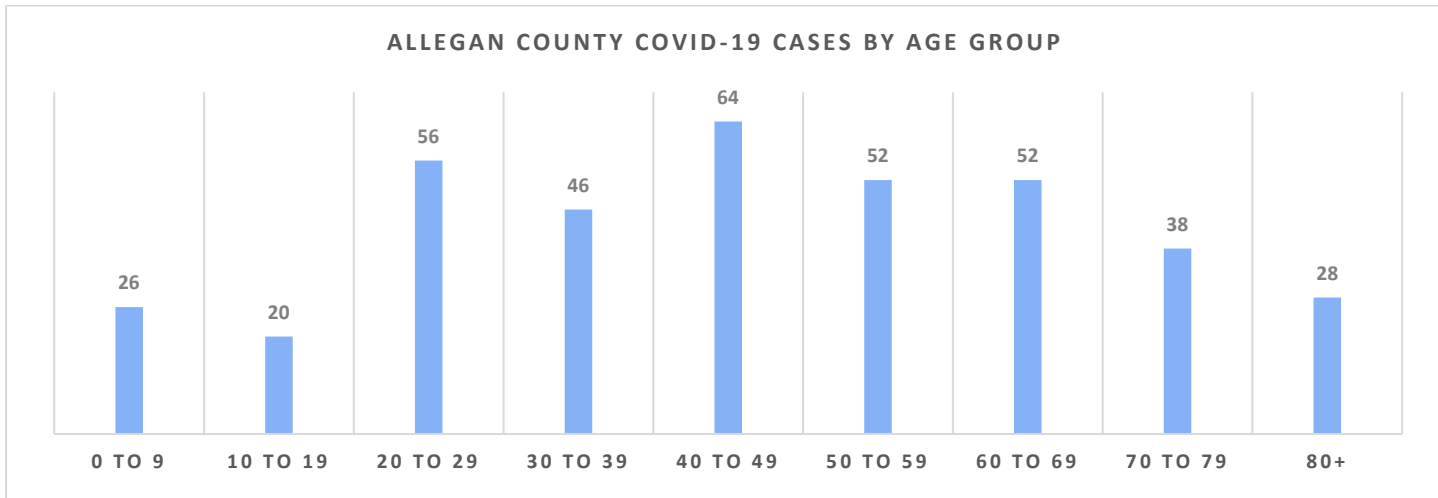
ACHD continues to monitor the COVID-19 metrics for hospitalizations and deaths as this can show the risk of a medically significant COVID-19 variant or healthcare system strain.

CASE INVESTIGATION²

ACHD is currently working to investigate all communicable disease cases. Prioritized groups for case investigation, when applicable, include individuals over the age of 65, school-aged individuals, and individuals that live or work in congregate care settings. During the case investigation process, ACHD works to ensure all basic needs are being met for individuals and their families. All cases receive a Patient Education Genius (PEG) notification that is provided via email or text messages for a case investigation form.

CASES IN THE LAST TWO WEEKS, BY AGE GROUP (7/8/2022 TO 7/21/2022)

¹ As reported in the MI-HAN Regional Data File; Positivity Rate is calculated for percent positive persons for day and county
² Case investigation consists of contacting the individual and asking standard questions related to the disease and identifying those who might have been exposed.



From 7/8/2022 to 7/21/2022, 3.7% of cases were reported as asymptomatic in the Michigan Disease Surveillance System (MDSS). In comparison to the previous reporting period (6/24/22 to 7/7/22), there has been an overall increase in cases across all age groups.

- 8.4% of cases were **in quarantine** at the time of symptom onset or positive test
- 17.3% of investigated cases were **household close contacts**³
- 0.5% of cases were reported as **community contacts**⁴
- 8.4% of cases were close contacts to those who work or live in a **high-risk/congregate facility**

Notifying close contacts helps individuals know about exposure and allows close contacts to make decisions based on their own risk assessment.

382 cases were reported in the MDSS from 7/8/2022 to 7/21/2022

EXPOSURE LETTERS AND CLOSE CONTACTS

ACHD sends potential Exposure Letters for COVID-19, similar to other communicable disease letters. Potential Exposure Letters are sent to school-aged individuals based on classroom and bus lists provided by schools. Quarantine might be required if there is an identified outbreak or ongoing spread in the facility. Recommendations regarding masking and quarantine may change as conditions evolve or if Allegan County moves to a high level of community transmission, based on the CDC framework.

13,632 exposure letters were sent from March 1, 2022 to July 25, 2022

0 close contacts are currently being monitored during this reporting period as of July 25, 2022

OUTBREAKS & CLUSTERS IN ALLEGAN COUNTY

The following table shows the number of outbreaks⁵ that ACHD has identified for high-risk settings as of July 21, 2022. **ACHD has identified 0 new outbreaks related to Long-Term Care Facilities⁶ and 0 new outbreaks related to other congregate-care facilities, since the last update.** No new outbreaks or clusters were identified for schools since the last report on May 24, 2022. ACHD has not identified any new outbreaks for businesses since February 17, 2022. ACHD reported **two** ongoing outbreaks to MDHHS as of July 21, 2022.

³ Household contact: person lived with someone who tested positive and later tested positive themselves.

⁴ Community contact: person who was identified as a close contact in a setting other than a household

⁵ Outbreak investigation codes are assigned by the first date of onset

⁶ Data from 10/21/2021

ACHD has developed COVID-19 Business Mitigation Strategies Survey for businesses, Long-Term Care Facilities, daycares and schools to provide us with information on the current mitigation strategies they have in place. The surveys are sent out when an outbreak has been identified at a location.

Type of Setting	Total Number of Outbreaks*
School	18
Business	8
Long Term Care ^β	27
Other Congregate Facilities ^α	3

*Includes clusters per requirement indicated in MDSS' outbreak investigation fields to assign an outbreak code for 'clusters'

^βIncludes Skilled Nursing Facilities (SNF), Adult Foster Care (AFC), Home For the Aged (HFA), Assisted Living, and Independent Living facilities

^αIncludes jails, correctional facilities, and shelters

LONG TERM CARE & OTHER CONGREGATE CARE FACILITIES

As of July 21, 2022, ACHD has connected **14** LTCFs in Allegan County with the iPRAT Team for additional mitigation assistance⁷.

In Michigan, the number of LTCFs reporting three or more cases in a single reporting period **increased** in Adult Foster Care (AFC)/Home for the Aged (HFA) from 7 to 16, but **decreased** in Skilled Nursing Facilities (SNF) from 22 to 20, since the last Michigan Data and Modeling update on July 12, 2022. According to statewide data⁸, the case counts reported for residents and staff in AFC/HFA have **increased** since the last update. Case counts reported for both residents and staff in SNF have also **increased**. Cases within LTCFs continue to be higher among staff than among residents, which has been the case throughout the Delta and Omicron surges.

ACHD plans to share forecasting wastewater readings with long-term care facilities in the August LTCF Newsletter to help inform their COVID-19 mitigation strategies.

515 resident cases and 54 resident deaths have been reported from January 1, 2020, to July 12, 2022⁹

832 staff cases have been reported from January 1, 2020, to July 12, 2022

Many of the LTCFs in Allegan County are experiencing staffing shortages. As of July 19, 2022, in Michigan 30% of SNF reported **nursing shortages**, and 31% of SNFs are reported **aide shortages**; these numbers have been about the same for the last nine weeks.

SUFFICIENT HEALTH CARE CAPACITY

HOSPITALIZATIONS

Allegan County falls in the Region 5 Health Care Coalition. Some community members will also access hospitals in the Region 6 Health Care Coalition (Grand Rapids-Holland Region). The chart below lists the hospitals that Allegan County community members may access for COVID-19 and non-COVID-19-related health needs and their current capacity levels.

The following figures show the current percentage of inpatient beds treating COVID-19 patients, for the Grand Rapids Region (Region 6), and Kalamazoo Region (Region 5). The **Grand Rapids Region** had **4.9%** of inpatient beds that are COVID-19 positive, as of July 18, 2022, which is **.7% higher** than the previous reporting period, June 28 to July 4. The **Kalamazoo Region** had **6.6%** of inpatient beds that are COVID-19 positive, as of July 18, 2022, which is **1.7% higher** than the previous reporting period.

⁷ An outbreak investigation is initiated when a resident at a Long-Term Care Facility (LTCF) is identified as a confirmed case of COVID-19. For correctional facilities, either a confirmed or a probable COVID-19 case will prompt an outbreak investigation. MDHHS offers further support for facilities via the Infection Prevention and Resource Assessment Team (iPRAT) when ACHD identifies facilities that are experiencing a large number of positive COVID-19 tests.

⁸ Weekly data reported by facilities with bed occupancy of at least 13 beds

⁹ The information above represents COVID-19 data reported directly to MDHHS by licensed and operating Skilled Nursing, Home for the Aged and Adult Foster Care facilities (licensed to serve 13 or more individuals) in Michigan from January 1, 2020, through July 12, 2022

HOSPITALS IN THE ALLEGAN COUNTY AREA

See [previous report from 7/12/22](#) for updates regarding hospital bed capacity.

Hospital bed capacity information can be found on the MDHHS website: [Statewide Available PPE and Bed Tracking \(Michigan.gov\)](#)

Note: Some smaller hospitals might not have ICU beds for COVID-19 or non-COVID-19 patients

DEATHS (7 DAY AVERAGE)

The 7-day average for daily deaths has been less than 1 for the last 4 months, and is refelected as 0 on the Michigan Safe Start Map. For a complete view of the 7-day average daily deaths for Allegan and other counties over the course of the pandemic visit, [Dashboard | CDC | MI Start Map](#)

BEST PRACTICES

SCHOOLS

There are no COVID-19 updates for this section. Please refer back to the [previous report from 7/12/2022](#).

BUSINESSES

There are no COVID-19 updates for this section. Please refer back to the [previous report from 7/12/2022](#).

MONKEYPOX

Since Monkeypox has been identified in Michigan, it is important for businesses, especially those of high-risk settings, to practice strong mitigation strategies, such as cleaning and disinfecting, proper PPE, and frequent handwashing.

CDC HAS THE FOLLOWING MONKEYPOX RESOURCES, AVAILABLE TO DOWNLOAD AND POST IN AREAS:

- [Guidance for Social Gatherings and Safer Sex](#)
- [Preventing Monkeypox in Congregate Settings](#)
- [Monkeypox FAQs](#)

COMMUNICATIONS

COVID-19 Health Education has been a mandated service in this response. The following are metrics related to COVID communication efforts from 7/8/2022 – 7/21/2022:

- 5 Social media posts
- 9 Education materials created/updated
- 1 Community Update sent out
- 1 Provider Update sent out

MONKEYPOX PREVENTION

It's important to be aware of the signs and symptoms of monkeypox, how to prevent monkeypox, and what to do if you or someone you know develops symptoms.

- Individuals experiencing monkeypox symptoms should contact their health care provider.
- Individuals who are sick with monkeypox should isolate at home. If they have an active rash or other symptoms, they should be in a separate room or area from other family members and pets when possible.

Monkeypox is contagious when a rash is present up until scabs have fallen off. Symptoms generally appear one to two weeks after exposure and infection, and the rash often lasts two to four weeks.

For more information on monkeypox visit: www.cdc.gov/poxvirus/monkeypox or the [MDHHS Monkeypox page](#). See [previous BOC reports](#) for background information on monkeypox.

FREE PRESCHOOL & KINDERGARTEN ENTRANCE HEARING & VISION SCREENINGS

The next preschool and kindergarten entrance hearing and vision screenings ACHD will be holding are on August 9, 10, and 11.

Parents or guardians can call 269-673-5411 to schedule an appointment at ACHD.

MONKEYPOX: What to Know



How it spreads:

- Direct contact with the infectious rash, scabs, or body fluids
- Respiratory secretions during prolonged, face-to-face contact, or during intimate physical contact, such as kissing, cuddling, or sex
- Touching items (such as clothing or linens) that previously touched the infectious rash or body fluids
- Pregnant people can spread the virus to their fetus through the placenta

The illness typically lasts 2-4 weeks. People who do not have monkeypox symptoms cannot spread the virus to others.



Symptoms:

- Fever
- Headache
- Muscle aches and backaches
- Chills
- Exhaustion
- Swollen lymph nodes
- A rash that can look like pimples or blisters

Prevention:

- Avoid close, skin-to-skin contact with people who have a rash that looks like monkeypox.
- Do not touch the rash or scabs of a person with monkeypox.
- Do not kiss, hug, cuddle or have sex with someone with monkeypox.
- Do not share eating utensils or cups with a person with monkeypox.
- Do not handle or touch the bedding, towels, or clothing of a person with monkeypox.
- Wash your hands often with soap and water or use an alcohol-based hand sanitizer



If you feel sick or have symptoms, do not attend any gathering, and contact your healthcare provider.

FREE PRESCHOOL & KINDERGARTEN ENTRANCE HEARING & VISION SCREENINGS
By appointment only.

Upcoming Clinic Dates:

- August 9, 10 & 11
- August 24, 25 & 26
- September 2
- October 7

To Schedule An Appointment, Please Call:
269-673-5411

Allegan County Health Department
3255 122nd Avenue, Suite 200
Allegan, MI 49010

EXÁMENES DE VISIÓN Y AUDICIÓN DE ENTRANCE PARA PRESCOLAR Y JARDÍN DE INFANTES
Solo por cita

Próximas clínicas de verano:

- 9, 10 y 11 de Agosto
- 24, 25 y 26 de Agosto
- 2 de Septiembre
- 7 de Octubre

Para programar una cita, por favor llame:
269-673-5411

Departamento de Salud del Condado de Allegan
3255 122nd Avenue, Suite 200
Allegan, MI 49010

COMMUNITY VACCINATION/HERD IMMUNITY/TREATMENT

Data as of July 25, 2022

NOVAVAX COVID-19 VACCINE: APPROVED

On July 19, 2022, the Centers for Disease Control and Prevention (CDC) updated its COVID-19 vaccine recommendations, approving the Novavax vaccine for emergency use authorization for adults 18 years and older. Novavax is a two-dose, protein-based COVID-19 vaccine given 3-8 weeks apart, different from an mRNA vaccination like Pfizer or Moderna. For more information on Novavax visit the [CDC Novavax page](#).

Novavax is another option for unvaccinated Americans who have not received their primary series of Pfizer or Moderna mRNA vaccines or the Johnson & Johnson vaccine, and was created using a more traditional protein-based technology. The U.S. has secured 3.2 million doses of Novavax, and the vaccine will be available in the coming weeks. ACHD will notify the public when Novavax becomes available at ACHD.

Those in need of a COVID-19 vaccine can visit www.vaccinatewestmi.com or www.vaccines.gov to find local vaccination clinics. COVID-19 vaccines are also available by appointment only at ACHD. Individuals can call 269-673-5411 to schedule an appointment.

STAYING UP-TO-DATE ON COVID-19 VACCINATIONS

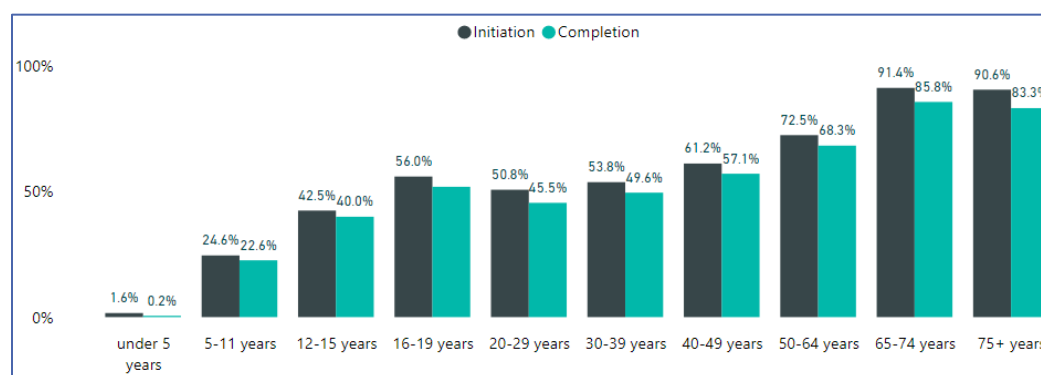
Omicron BA.5 cases have been rising across the country and throughout Michigan. As the Omicron BA.5 variant seems to infect vaccinated individuals more than previous strains, it is important to make sure individuals stay up-to date on their COVID-19 vaccinations so that if you do get infected, you are more protected from severe infection, hospitalization, and death. The CDC recommends COVID-19 primary series vaccines for everyone ages 6 months and older, and COVID-19 boosters for everyone ages 5 years and older, if eligible.

COVID-19 vaccination and boosters are an important tool we can use to help protect ourselves and loved ones from COVID-19 infection to stay healthy and safe throughout the rest of the summer and back-to-school time this fall.

- Individuals can use [this Interactive Tool from the CDC](#) to find out when they are eligible for a COVID-19 Booster.
- Parents: Why vaccinate your child? View this factsheet on [how COVID-19 vaccination is a helpful tool for protecting your child](#).

COVID-19 VACCINE COVERAGE

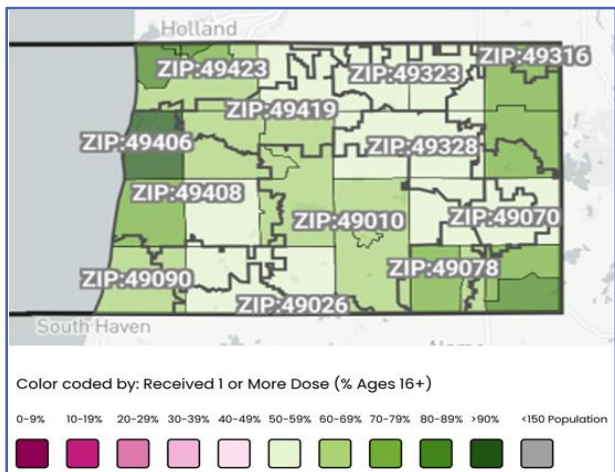
VACCINATION COVERAGE BY AGE GROUP



As of 7/22/2022

The adjacent map displays vaccine coverage for Allegan County. Vaccine rates for the age group 65+ are higher than overall state vaccine rates. See Previous Reports for updates on Vaccine Coverage [here](#).

Data as of July 25, 2022



VACCINATION COVERAGE BY ZIP CODE

The adjacent map on the left shows the vaccination rates for residents aged 16 and older who received at least one dose of vaccine. The data is at the census tract¹⁰-level (colored sections) with an overlay of Alleghen zip codes. This map gives more context for the parts community to focus on when organizing potential vaccination campaigns. Areas in the center of the county, with lower population counts, appear to have the lowest vaccination rates, while perimeter areas on the East and West sides of the county have higher vaccination rates overall. This data is based on a total population count of 115,250 as recorded in the 2018 US Census.

VACCINE AVAILABILITY

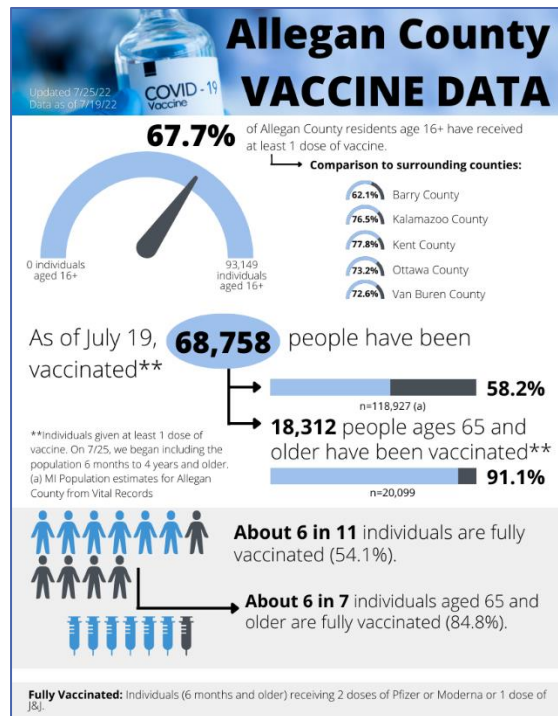
Vaccine availability remains high as pharmacies, doctor’s offices, and health care systems are administering vaccines. ACHD has vaccine appointments available on Thursdays each week for vulnerable populations or children in the Vaccine for Children program.

Now that children under the age of 5 are eligible for COVID-19 vaccines, parents can call ACHD to schedule an appointment for their child.

Residents are encouraged to visit www.vaccinefinder.org and www.vaccinatewestmi.com to find vaccination clinics near them, or call ACHD at 269-673-5411 to schedule an appointment.

ACHD works with businesses and organizations offering support and/or vaccination clinics if there is an outbreak detected and assistance needed.

Note: On 7/25 Vaccine data for individuals 6 months to 4 years of age group has been included. Population estimates for Alleghen County has also changed from 110,914 to 118,927 from MI Vital Records.



VACCINE EFFECTIVENESS

COVID-19 vaccines continue to be an **important layer in reducing the severity of illness, and the burden of hospitalizations and deaths** in children, adolescents, and adults, even with the emergence of the BA.5 variant.

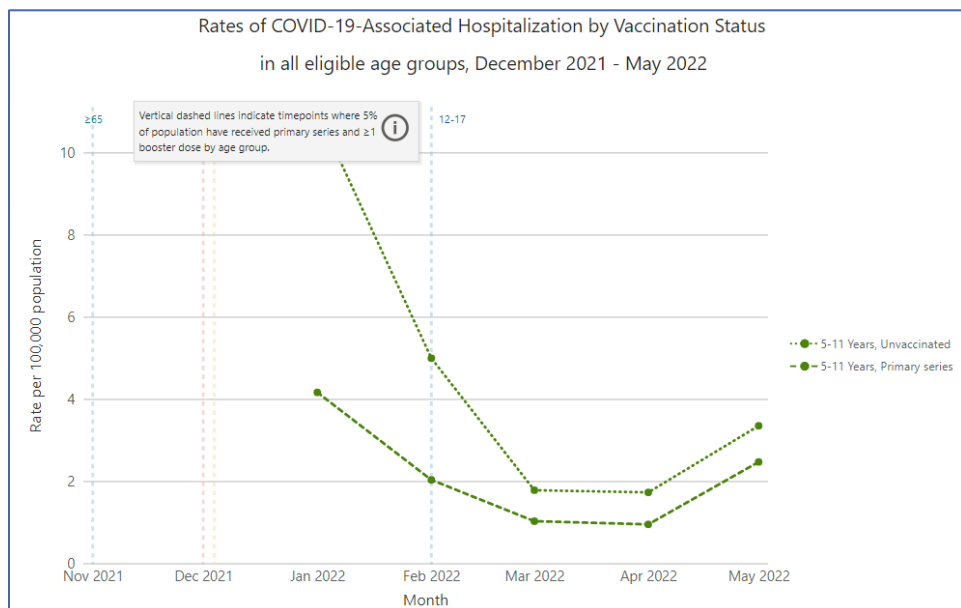
The CDC and additional partners conduct an ongoing collaborative study of COVID-19 vaccine effectiveness (VE) on a monthly basis, and note that “VE estimates are not expected to change from month to month unless circulating variants significantly change.” The [latest monthly study](#) focused on COVID-19 VE among children and adolescents and was published on July 14, 2022. This study reinforces the **importance of COVID-19 vaccination during pregnancy**. Data evaluations show that there is a **reduced risk of hospitalizations related to the SARS-CoV-2 infection** in children younger than 6 years of age by 80% during the Delta wave¹¹ and by 40% during the Omicron wave¹².

¹⁰ Census tracts are geographic entities within counties with similar characteristics such as population traits, school enrollment, poverty level, median household income, housing vacancy, etc.

¹¹ Delta wave period occurred from July 1 through December 18, 2021

¹² Omicron wave period occurred from December 19,2021 through March 8, 2022

The VE estimates for March-June 2022 can be found [here](#) in a data table sorted by variables such as outcome and age group; these data are organized by the most recent date of study publication. Being [up to date](#) on COVID-19 vaccines is crucial in reducing the burden of hospitalizations; data observed in April 2022 showed that nationally, **unvaccinated adults had 3.6 times the risk of hospitalizations** associated with COVID-19.



The adjacent chart shows the rates of COVID-19 associated hospitalizations by vaccination status. Data is from CDC's COVID-NET¹³ surveillance unit for individuals 5 to 11 years of age, and reflect hospitalizations through May 2022.

As shown in the chart, hospitalizations in unvaccinated children in the 5-11 age group (dotted green line) were significantly higher during the Omicron wave compared to those who had received a primary series¹⁴ (dashed green line). For additional information on specific data coverages, visit [COVID-NET](#).

Similar to COVID-19 hospitalizations,

COVID-19 vaccines are effective in reducing the burden of deaths. According to the July 19 [data and modeling, in Michigan](#), **unvaccinated individuals had 33 times the risk of dying** from COVID-19 in April 2022 compared to those who were [up to date](#) on the COVID-19 vaccination schedule. Based on the cumulative total incidence of death rates, **COVID-19 is the leading cause of death among infectious diseases** for people **ages 0 to 19**.

BREAKTHROUGH SURVEILLANCE DATA: For more information and the latest data on the rates of COVID-19 breakthrough cases, hospitalizations, and deaths, please refer to [CDC COVID Data Tracker: Rates of COVID-19 Cases and Deaths by Vaccination Status](#).

LOCAL HEALTH DEPARTMENT (LHD) BREAKTHROUGH DATA DISTRIBUTION

Refer to the [previous report from 6/21/22](#) for updates regarding breakthrough data distribution.

COVID-19 SURVEILLANCE

7-DAY METRICS	STATEWIDE	NATIONWIDE ¹⁵	GLOBAL ¹⁶
Cases	16,445	125,827	6,722,000
Hospital Admissions	127.57	6,180	No data available ¹⁷
Deaths	149	347	14,362
Percent Population Fully Vaccinated	64.4%	67.2%	66.8% ¹⁸

¹³ COVID-NET (CDC) is a population-based surveillance system of data collection on hospitalizations associated with laboratory-confirmed COVID-19 cases in children and adults

¹⁴ Primary series is defined as "vaccine administered as the first dose for 1-dose series and second dose for 2-dose series."

¹⁵ Data as of 7/20/2022; [COVID Data Tracker Weekly Review | CDC](#)

¹⁶ Data as of 7/17/2022; [COVID-19 Map - Johns Hopkins Coronavirus Resource Center \(jhu.edu\)](#)

¹⁷ Hospital data collection is challenging to achieve for some countries

¹⁸ Data as of 7/21/2022; [Coronavirus \(COVID-19\) Vaccinations - Our World in Data](#)

Percent Positivity	15-19.9%	17.3% ¹⁹	No data available
--------------------	----------	---------------------	-------------------

STATEWIDE (MICHIGAN)

- As of **July 19, 2022**, [Michigan Coronavirus Data](#) reports a total of **2,652,659 cases** and **37,291 deaths** related to the SARS-CoV-2 infection.
- In the July 19, 2022 MDHHS [data and modeling update](#), it is reported that the Rt²⁰ for Michigan is increasing above 1, thus, indicating the COVID spread is increasing. Currently, there are 49 counties showing increases and 14 counties are at elevated incidence plateaus. Of note, this is the largest shift observed during the period of over a month.
 - 46% of Michigan counties are at Medium or High COVID-19 Community Levels, which is higher than the prior week of July 10, 2022; 54% of Michigan counties are classified as Low this week per CDC's community levels, which represents 52% of the Michigan population as of July 14, 2022.
 - Cases:** Case rates by age, race, and ethnicity are increasing; currently case counts are highest for the 80+ age group, followed by 30 to 39 and the 20 to 29 age groups.
 - Hospitalizations:** Regions 1, 2N, 2S, 5, 6, and 7 have shown an increase in COVID-19 hospitalizations this week; Regions 3 and 8 have decreased or plateaued. Through July 18, there were an average of 118.3 COVID-19 hospital admissions per day (a modest increase from last week). As of July 19, 2022, the overall statewide COVID+ census in hospitals is 852 patients. ICU occupancy is below 85% across all regions.
 - Deaths:** Based on data in the past 30 days, both confirmed and probable COVID-19 deaths are reported to be fewer than 15 under the age group of 50.

NATIONWIDE (UNITED STATES)

- Total **cases** nationwide as of July 21, 2022, is **89,824,190 (up 1,276,308 from July 7, 2022)**. **1,021,048 total deaths (up 232 from July 7, 2022)** have been reported as of July 21, 2022; which accounts for more than 15% of total deaths worldwide.
- According to the CDC, as of July 22, 2022, COVID-19 cases, deaths, and hospitalizations are on the rise in the United States, driving COVID-19 Community Levels up to medium or high for 75% of counties.
 - Omicron BA.5 is now the predominant variant, causing an estimated 78% of new cases
- In the U.S., case rates increased 16% over the past week (as of 7/19/2022)
 - Case rate is 266 cases/100,000 in last 7 days (last week: 223 cases per/100,000)
- Midwestern states (Region 5) are once again increasing
- Nationally, unvaccinated adults had 3.6 times the risk of hospitalizations from COVID-19 in April compared to people up to date on their vaccination
- Booster vaccination rates vary widely across the U.S. In the Northeast and parts of the Midwest, 50% to 70% of eligible people have gotten their first booster in almost every county. However, for much of the Southeast and Southwest, only 30% to 40% of eligible people have gotten their first booster.
- In the U.S., over 60% of MIS-C cases under the age of 5 have been reported among Non-Hispanic Blacks and Hispanic/Latino cases

GLOBAL

- Globally, as of **July 22, 2022**, the World Health Organization (WHO) reports **565,207,160 confirmed cases (up 13,980,862 from July 8, 2022)** and **6,373,739 deaths (up 28,144 from July 8, 2022)** related to the SARS-CoV-2 infection.
- According to WHO's weekly Epidemiological Situation Report as of July 20, 2022:
 - Nearly 6.3 million cases were reported globally during the week of July 11 to July 17 of 2022, and the number of cases showed a plateaued trend during this timeframe

¹⁹ The 7-day average number of tests reported for July 8-14

²⁰ Rt is a unit of epidemiological unit of measurement to indicate the reproduction number of a virus over a particular time

- The number of **new weekly deaths is reportedly increasing** with 11,100 fatalities reported; at a regional level, increases were observed in South-East Asia Region (+20%), the Eastern Mediterranean Region (+15%), and the Region of Americas (+7%)
- The highest number of new weekly cases and increases were reported in the U.S. (+18%), France (-15%), Italy (+9%), Germany (-3%), and Japan (+107%)
- Among the sequencing of Omicron sublineages, all sub-variants have shown a decline with the exception of BA.5, which has reportedly been on the rise globally. The global proportion of BA.5 sequencing is 53.59% with associated cases surges being reported in over 100 countries as of July 18, 2022
- WHO is currently monitoring an Omicron subvariant known as BA.2.75, which has nine additional mutations in the spike compared to BA.2 and has had 250 sequences reported from 15 countries as of July 18, 2022.

WASTEWATER SURVEILLANCE

See the most recent [MDHHS data and modeling update](#) for the Michigan SWEEP Sentinel Wastewater Summary

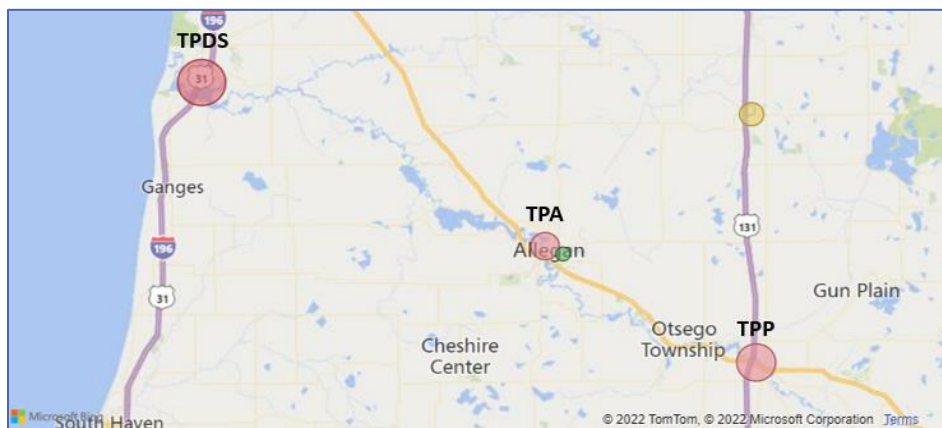
Hope College has collaborated with ACHD to produce a dashboard, which displays the most recent wastewater readings and case counts. The colored circles of differing sizes represent the concentration of COVID-19 in the wastewater as of July 21, 2022 (TPA²¹, TPP²², TPDS²³), which have existing data points for the most recent nine calendar days (7/12/2022 – 7/21/2022).

The red circles represent higher COVID-19 concentration levels, yellow circles represent lower concentration levels and green circles indicate virtually no COVID-19 detection in the sample. The areas with red circles (higher concentrations of COVID-19), correlate with the increase in cases at LTCFs and other congregate care facilities during this reporting period. With this dashboard, ACHD has been able to forecast a rise in cases for certain areas, which has improved mitigation responses. Over the last two weeks, approximately four facilities around these treatment sites have reported 2+ COVID-19 cases.

The following three sites have the most current and accurate data readings:

Allegan Sewershed Sites	Trend Dates		Current Trend Patterns
TPA	7/19/2022		Increasing
TPP	7/20/2022		Increasing
TPDS	7/21/2022		Significant Increase

The adjacent map shows current wastewater sewer shed sites that Hope College is monitoring in Allegan County



Wastewater surveillance is rapidly increasing in the U.S. There are 1,134 wastewater-sampling sites in the US as of July 19, 2022; an increase of 31 sites from July 3, 2022.

Read more on the [method of using wastewater surveillance data](#) to monitor case patterns at individual and population levels as it relates to the SARS-CoV-2 infection

EMERGING VARIANT UPDATES

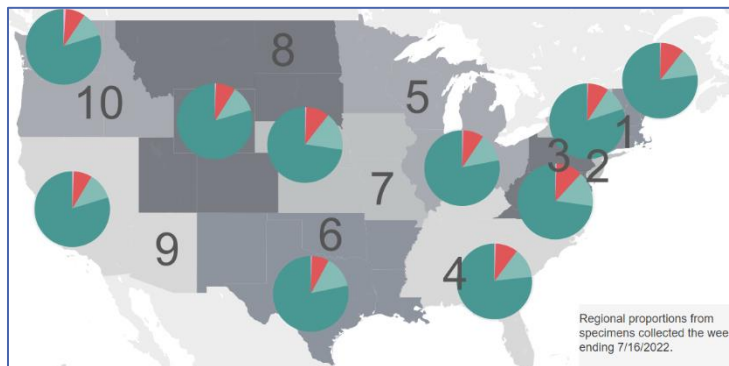
²¹ Allegan Water Resource Recovery Facility

²² Plainwell Wastewater Treatment Plant

²³ Douglas/Saugatuck WWTP

Data as of July 25, 2022

- Omicron continues to be the predominant variant of concern (VOC) with several sub-lineages, including BA.4, BA.5, BA.2.12.1, and recombinants²⁴ of these.
- Global and national trends are currently showing resurgences occurring from the BA.4 and BA.5 variants. As of the [data and modeling update](#) of July 19, 2022, case rates in the U.S. have increased 16% over the previous week of July 11, 2022.
- The [CDC Nowcast Projections](#) estimate that the predominant Omicron sublineage BA.5 is projected at 65.0%, and the combined national proportion of all Omicron lineages continues to be at 100% for the week ending July 9, 2022.
- The adjacent chart shows the U.S. regional proportions from specimens collected the week ending July 16, 2022. As can be seen, a majority of the specimens sequenced are BA.5 (green), followed by BA.4 (light green), and BA 12.2.1 (orange).
- **Michigan:** [updates](#) on current Variant of Concern (VOC) distribution
 - Since June 1, there have been 836 VOC specimens sequenced of which 100% are of the lineage designated as Omicron
 - 70.5% of the specimens sequenced were associated with the Omicron sublineage BA.5, as of July 3, 2022
 - The total number of specimens sequenced and reported remains low (n=44)
- **United States:** [updates](#) from the SARS-CoV-2 circulating variants, May 15-July 9, 2022
 - 77.9% were associated with the BA.5 Omicron sublineage; 12.8% were of the BA.4 sublineage
 - The Omicron subvariant BA.2.12.1 which was the predominant variant surge in April 2022, is currently projected to be 17.3%
- **New Studies on BA.5:**
 - The Omicron sublineage BA.5 is highly transmissible; scientists are still studying to understand the approximate rate of transmission with the newer Omicron subvariants
 - It has been theorized by an Australian statistician that, “each person who gets BA.5 could spread it to 18 others, which would put BA.5 on par with the infectiousness of measles.”
- ACHD continues to monitor all Omicron sub-lineages and deploy response measures accordingly.



EPIDEMIOLOGIC SURVEILLANCE

MONKEYPOX (MPV)

For background information on MPV and previous information discussed, please refer to the [6/21/22 report](#)

UPDATES: As of July 21, 2022, the CDC’s MPV Situation Summary has released the following data via [CDC US Map](#):

- Michigan:
 - 19 total MPV cases identified
- United States:
 - 2,593 total MPV/orthopoxvirus cases in 46 states (transmission has increased in 10 more states compared to the last report)
 - New York has the largest number of cases (n=830) followed by California (n=356), and Illinois (n=230)
- Global:
 - 15,848 cases in 72 countries (66 of these countries have not historically reported MPV cases)

²⁴ Recombinant occurs in “a process in which the genomes of two SARS-CoV2 variants (that have infected a person at the same time) combine during the viral replication process to form a new variant that is different from both parent lineages.”

- Spain has the largest number of cases (n=3125) followed the y United States (n=2592), Germany (n=2191), and United Kingdom (n=2137)
- For a detailed list of the outbreaks reported in non-endemic countries, refer to: [Multi-country monkeypox outbreak in non-endemic countries \(who.int\)](#)
- On July 18, 2022, MDHHS released a webpage for MPV-related education and information for public view that can be accessed [here](#)

HIGHLY PATHOGENIC AVIAN INFLUENZA (HPAI)

Read [previous BOC updates on HPAI](#).

Wild Bird Reporting

- Complete [Eyes in the Field app](#). Choose the “Diseased Wildlife” option among the selections for “Observation Forms.”
- Calling the DNR Wildlife Disease Laboratory at 517-336-5030.

Domestic Bird Reporting

- Contact MDARD **immediately** at 800-292-3939 (daytime) or 517-373-0440 (after-hours).

RESOURCE: [Biosecurity tips and resources for flock owners](#)

ADENOVIRUS AND ACUTE HEPATITIS

Updates according to the most recent WHO Disease Outbreak Report:

- As of July 8, 2022, 35 countries have reported 1,010 probable cases of severe acute hepatitis of unknown etiology in children, according to WHO case²⁵ definition, with 22 deaths
- 90 new probable cases and four additional deaths have been reported to WHO, since the previous Disease Outbreak News published on June 24, 2022
- Two new countries - Luxembourg and Costa Rica, have reported probable cases.
- The US has the highest number of probable cases, with a total of 334.

The World Health Organization has declared a moderate risk level for acute pediatric hepatitis. See the [previous BOC report from 7/12/22](#) and the [WHO Disease Outbreak News \(DONs\)](#) for updates on Adenovirus and Acute Hepatitis.

RECENT EMERGING HEALTH THREATS: AT A QUICK GLANCE

Arboviruses

See the [previous BOC report from 7/12/22](#) for updates on Arbovirus

[Candida auris](#)

- Read [previous BOC update](#) from July 12, 2022

[Rabies](#)

- Rabies-positive animals in Michigan, as of July 15, 2022: 22 bats from Alcona (1), Allegan (1), Bay (1), Delta (1), Huron (2), Kalamazoo (1), Kent (4), Oakland (2), Ottawa (2), Newaygo (1), Tuscola (2), Washtenaw (4)

[Salmonella Outbreaks Linked to Backyard Poultry](#)

- As of July 13, 2022: 572 cases from 48 states (5 in Michigan)
- 92 hospitalizations, 2 deaths

²⁵ World Health Organization probable case definition: acute hepatitis (non hep A–E) with serum transaminase >500 IU/L (AST or ALT) in a person aged ≤16 years, since October 1, 2021

- Illness onset dates range: February 3, 2022 to June 22, 2022; the median age range for individuals that became ill is 32 years of age and 130 cases were reported in children younger than 5 years of age
- Epidemiologic data show that contact with backyard poultry is making a majority of the people sick


SOURCES

- [Allegan County Health Department Facebook page](#)
- [American Academy of Pediatrics: Hepatitis Cases Possibly Associated with Adenoviral Infection](#)
- [American Community Survey 5-Year Data \(2009-2020\) \(census.gov\)](#)
- [Centers for Disease Control and Prevention](#)
- [CDC COVID-19 Booster Interactive Tool](#)
- [CDC COVID-19 Data Tracker](#)
- [CDC COVID-19 Travel Guidance](#)
- [CDC Frequently Asked COVID-19 Questions for K-12 Settings and ECE](#)
- [CDC Health Alert Network](#)
- [CDC Monkeypox Fact Sheet](#)
- [CDC Monkeypox Signs and Symptoms](#)
- [CDC Monkeypox Transmission](#)
- [CDC Provisional COVID-19 Deaths: Focus on Ages 0-18 Years](#)
- [CDC Stay Up-to-date on Vaccinations](#)
- [COVID Data Tracker Weekly Review](#)
- [COVID-19 Vaccine Dashboard](#)
- CHN Associates, Student, and Family Assistance Program Monthly Report
- [Division of Vector-Borne Diseases \(DVBD\) | Division of Vector-Borne Diseases | NCEZID | CDC](#)
- [FDA: Investigations of Foodborne Illness Outbreaks](#)
- [Find a COVID-19 Vaccine Near You](#)
- HONU
- [Is the pediatric hepatitis outbreak real? A top WHO physician weighs in | Science | AAAS](#)
- [Lighthouse \(mi-lighthouse.org\)](#)
- [Long Term Care Data](#)
- [MDHHS Monkeypox Page](#)
- [MDHHS School Outbreak Reporting](#)
- [MDHHS: School Age Case Data Dashboard](#)
- [MDHHS: Why Vaccinate Your Child](#)
- [MI Bridges](#)
- [MI COVID response Data and Modeling](#)
- [Michigan Coronavirus: COVID-19 Vaccine](#)
- [Michigan COVID-19 Wastewater Testing and SWEEP Dashboard](#)
- [Michigan Coronavirus Data](#)
- Michigan Department of Health and Human Services (MDHHS) Breakthrough Cases Data File
- Michigan Disease Surveillance System (MDSS)
- [Michigan DNR Eyes in the Field](#)
- Michigan Health Alert Network (MIHAN)
- [MI Safe Start Map and CDC Indicators](#)
- [New COVID-19 Cases Worldwide - Johns Hopkins Coronavirus Resource Center \(jhu.edu\)](#)
- [Office of International Health and Biodefense - United States Department of State](#)
- [Our World in Data - Coronavirus \(COVID-19\) Hospitalizations](#)
- [Sewer Coronavirus Alert Network \(SCAN\) \(wastewaterscan.org\)](#)
- [Technical Report: Acute Hepatitis of Unknown Cause | CDC](#)
- [US Food and Drug Administration](#)
- [US Department of Health and Human Services: Find Formula During Infant Formula Shortage website](#)
- [Vaccinate West Michigan](#)
- [World Health Organization Coronavirus Dashboard](#)
- <https://www.who.int/emergencies/diseases/novel-coronavirus-who> Coronavirus disease (COVID-19) Weekly Epidemiological Update and Weekly Operational Update2019/situation-reports


APPENDICES

Allegan County COVID-19 Community Level: LOW

Allegan County Health Department recommends everyone to:




Stay up to date on your COVID-19 Vaccines



Get tested if you have symptoms, before and after traveling, and before gathering with others.

Actions including social distancing, frequent handwashing, wearing a well-fitted face mask, and isolation/quarantine help lessen the level of transmission. People may choose to mask at any time.

People with symptoms, a positive test, or exposure to someone with COVID-19 should wear a mask.



Learn more about CDC's COVID-19 Community Levels by visiting www.covid.cdc.gov

#DoYourPart

Allegan County COVID-19 Community Level: LOW

Pick-up Free Masks

- Monday-Friday 8:30am to 4:30pm at the Allegan County Health Department (3255 122nd Ave, Allegan)
- At select local units of government and libraries.
 - Visit allegancounty.org/covid to view the list of agencies under our Mask Information page.


Get Tested:

- Order free at-home test kits online at:
 - www.covidtests.gov
 - www.accesscovidtests.org
- Pick-up test kits locally:
 - Visit www.allegancounty.org/covid to view pick-up locations under our Testing page.
- Find a community testing site near you at:
 - Allegan County Transportation Building (750 Airway Dr, Allegan) on Wednesdays and Fridays from 12 pm to 5 pm.
 - Visit www.solvehealth.com for more locations near you.

Find COVID-19 Treatments

- Find information and options near you: michigan.gov/covid19therapy
- View a test to treat location near you: aspr.hhs.gov/TestToTreat
- Talk to your doctor about treatment options if you test positive for COVID-19.

Follow CDC's isolation and quarantine guidelines and stay home if you develop symptoms or test positive.



#DoYourPart

Stay up-to-date on COVID-19 Vaccines

- Find vaccine clinics near you at:
 - vaccinatewestmi.com
 - vaccines.gov
- Or call ACHD at 269-673-5411 to schedule an appointment

COVID-19 VACCINE FOR KIDS <5

Top 6 parental concerns answered

June 2022

- For children **under 5 years old**, parents have two options for a COVID-19 vaccine:
 - **Moderna:** 2-dose series taken 4 weeks apart. Each dose is 25 µg, which is 1/4 the dosage of the adult vaccine.
 - **Pfizer:** 3-dose series. Dose 2 is 3 weeks after Dose 1. Dose 3 is 8 weeks after Dose 2. Each dose is 3 µg.

The vaccines are effective

- Moderna's** clinical trial included 6,300 children.
- Antibodies after Dose 2 were the same or exceeded those in adults.
 - Efficacy against infection was 51% for 6–23 month olds and 37% for 2–5 year olds.
 - Efficacy was consistent with vaccine effectiveness for adults during Omicron.
 - A booster will likely be needed. Studies are underway and results are expected at end of summer.
- Pfizer's** clinical trial included 1,400 children.
- Antibodies after Dose 3 exceeded adults.
 - Efficacy against infection after Dose 3 was 75% for 6–23 month olds and 82% for 2-4 year olds.
 - There were extremely few cases during the trial, so there is significant uncertainty around these efficacy numbers.
 - Note: Efficacy for these two vaccines cannot be directly compared due to varying length of follow-up, months the study was conducted (and thus, circulating virus), and different number of doses.
 - Vaccines can prevent infection and transmission, especially in the first few months. Unfortunately, as the virus continues to mutate, this timeline can be shortened. The **vaccines' primary purpose is to prevent severe disease and death.** Both vaccines are expected to decrease hospitalizations and ICU stays among this age group.

The vaccines are safe

- During both clinical trials:
- Temporary pain at injection site was common.
 - Fevers were more common after vaccine than placebo.
 - Fatigue and headache was most common in children ages 2–5 years; irritability and sleepiness was more common in children ages 6–23 months.
 - Side effects were more common with Moderna compared to Pfizer.
 - Serious adverse events were rare. No deaths occurred.
 - A child in each trial had a high fever which led to seizure or hospitalization.

Myocarditis is rare

- Myocarditis (heart inflammation) has been linked to mRNA vaccines in *adolescents*, but remains rare. Risk of myocarditis after mRNA COVID-19 vaccination, if any, in young children is unknown.
- No cases of myocarditis were reported in clinical trials. But the clinical trials were not large enough to capture such rare events.
 - Based on the epidemiology of classic myocarditis and safety monitoring in children ages 5–11 years, myocarditis after mRNA COVID-19 vaccination in young children is expected to be rare due to smaller doses and myocarditis being fundamentally different in young children.
 - Kids can get myocarditis from the virus, and it can be more severe.

There is a need

- COVID-19 disease in kids can range from asymptomatic to severe illness.
- The majority of children have mild-to-moderate disease.
 - COVID-19 can cause severe disease, even among healthy children.
 - **Deaths:** Since 2020, 442 children aged 0–4 years old have died from COVID-19. While this is lower than adults, COVID-19 is a top 10 leading cause of death for kids.
 - **Hospitalizations:** During the first Omicron wave, COVID-19 hospitalization among kids under 5 were higher than for any other child age group.
 - 86% of hospitalizations were *for* COVID-19 (as opposed to *with* COVID-19)
 - Hospitalizations passed previous flu peaks and previous COVID-19 peaks.
 - Of toddlers hospitalized for COVID-19, 1 in 4 went to the ICU.
 - 30–50% of hospitalized children had **no** underlying medical condition
 - Long COVID-19 occurs among kids. Vaccines reduce the risk of long COVID-19.

Previously recovered still need the vaccine

- As of February 2022, 75% of children had been infected with SARS-CoV-2 in the U.S.
- Getting a vaccine, even for people who have already recovered from COVID-19, strengthens their immune response. CDC states vaccinations **can** be delayed up to 3 months after infection.
 - Protection from infections can be effective, but a recent study showed some children *failed* to make antibodies after infection (the immune system's first line of defense) and had mediocre T-cell responses (the immune system's second line of defense).
 - Reinfection should be expected. SARS-CoV-2 is changing quickly.
 - Omicron infections do not elicit antibodies against *other* variants of concern. While Omicron may be the dominant variant right now, this could change in the future.

Long-term side effects, like infertility, are highly unlikely

- We do not know the long-term effects of mRNA COVID19 vaccines. However, based on our knowledge of mRNA and the human body, we do not expect them:
- It's biologically impossible for mRNA to alter DNA.
 - Previous research on other mRNA vaccines show no long term effects. mRNA research started in 1961. The first clinical trial with mRNA was in 2001.
 - Vaccine ingredients are cleared from the body very quickly. mRNA is very fragile and degrades within 72 hours of injection. Fat bubbles that carry the mRNA degrade within 4 days. Ingredients do not linger in the body.
 - mRNA vaccines are not made of the actual pathogen. This means that they don't contain weakened, dead, or noninfectious parts of a virus.
 - In the history of vaccines, serious adverse side effects only occur within the first 2 months of rollout. We have more than 24 months of vaccine follow-up data by now.
 - Thousands of people have gotten pregnant after vaccination.
 - There are reports that menstrual cycles change after a COVID19 vaccine. The body is mounting an immune response, and this is likely a temporary side effect, like a fever.

FREE AT-HOME TEST KITS TO ORDER ONLINE:

- www.Covidtests.gov - order 3 sets of 4 free at-home test kits from the federal government. (If you already ordered your first set, order a second or third today)
 - If you have health insurance through an employer or Marketplace, your insurance will pay you back for 8 at-home tests each month for each person on your plan. View more information [here](#).
- www.AccessCovidtests.org - order free at-home test kits through Project ACT (enter zip code to check eligibility)

FREE AT-HOME TEST KITS FROM MDHHS AVAILABLE AT 2 LIBRARIES IN ALLEGAN COUNTY:

- Allegan District Library (331 Hubbard St, Allegan)
- Fennville District Library (400 W Main St, Fennville)

FREE COMMUNITY TESTING EVENTS ARE HELD EVERY WEDNESDAY AND FRIDAY AT THE ALLEGAN COUNTY TRANSPORTATION BUILDING FROM 12 PM – 5 PM. THESE EVENTS OFFER PCR AND RAPID TESTING OPTIONS.

VISIT THE [MDHHS COMMUNITY BASED POP-UP TESTING PAGE](#) TO SIGN UP FOR THE TESTING EVENTS AT ALLEGAN TRANSPORTATION BUILDING AND TO FIND OTHER TESTING SITES NEAR YOU.

Visit <https://www.solvehealth.com/covid-testing> to find additional COVID-19 sites near you.

COVID-19 testing location finder: [Coronavirus - Test](#)