



# COVID-19 AND OTHER EMERGING PUBLIC HEALTH TOPICS

## BOARD OF COMMISSIONER UPDATE

SEPTEMBER 22, 2022

Data as of September 19, 2022

### CONTENTS

<b>EXECUTIVE SUMMARY</b> .....	<b>2</b>
<b>COVID-19 MITIGATION COMPONENTS</b> .....	<b>2</b>
<b>ENHANCED ABILITY TO TEST</b> .....	<b>3</b>
COUNTY-LEVEL DATA AS OF SEPTEMBER 12, 2022.....	3
<b>CASE INVESTIGATION AND CONTACT TRACING</b> .....	<b>3</b>
ALLEGAN COUNTY COVID-19 COMMUNITY LEVEL: LOW.....	3
OVERVIEW OF COVID-19 CASES AND DEATHS IN THE LAST TWO WEEKS (9/2/2022 to 9/15/22) .....	4
CASE INVESTIGATION.....	4
EXPOSURE LETTERS AND CLOSE CONTACTS IN SCHOOL SETTINGS .....	5
OUTBREAKS & CLUSTERS IN ALLEGAN COUNTY .....	5
LONG TERM CARE & OTHER CONGREGATE CARE FACILITIES .....	6
<b>SUFFICIENT HEALTH CARE CAPACITY</b> .....	<b>6</b>
HOSPITALIZATIONS .....	6
DEATHS (7 DAY AVERAGE) .....	6
<b>BEST PRACTICES</b> .....	<b>6</b>
SCHOOLS .....	6
BUSINESSES.....	7
COMMUNICATIONS .....	7
FIRST HUMAN CASE OF SWINE FLU (INFLUENZA A - H1N2) IN MICHIGAN, WHAT TO KNOW.....	7
PREPARING FOR FLU SEASON .....	8
MPV: WHAT TO DO IF YOU ARE EXPOSED AND WHERE TO GET VACCINATED .....	8
<b>COMMUNITY VACCINATION/HERD IMMUNITY/TREATMENT</b> .....	<b>8</b>
STAYING UP-TO-DATE ON COVID-19 VACCINATIONS AND BOOSTERS.....	8
COVID-19 VACCINE COVERAGE.....	9
VACCINATION COVERAGE BY AGE GROUP .....	9
VACCINATION COVERAGE BY ZIP CODE .....	9
VACCINE AVAILABILITY .....	10
VACCINE EFFECTIVENESS (VE).....	10
LOCAL HEALTH DEPARTMENT (LHD) BREAKTHROUGH DATA DISTRIBUTION.....	10
<b>COVID-19 SURVEILLANCE</b> .....	<b>10</b>
<b>EPIDEMIOLOGIC SURVEILLANCE</b> .....	<b>11</b>
<b>SOURCES</b> .....	<b>12</b>
<b>APPENDICES</b> .....	<b>14</b>

EXECUTIVE SUMMARY

The following report contains COVID-19-related data from **September 6, 2022 to September 15, 2022**, on the 5 mitigation components Allegan County Health Department (ACHD) previously identified. This report contains local COVID-19 data for Allegan County, information on vaccination data, wastewater surveillance, emerging variant updates, and other resources regarding COVID-19 mitigation. This report also contains epidemiological surveillance and health education on other ongoing and emerging public health topics including monkeypox (MPV), and other regional epidemiological topics at a glance. ACHD continues to monitor local, statewide, and global COVID-19 data, and continues to follow the Michigan Department of Health and Human Services (MDHHS) and the Centers for Disease Control and Prevention (CDC) recommendations.

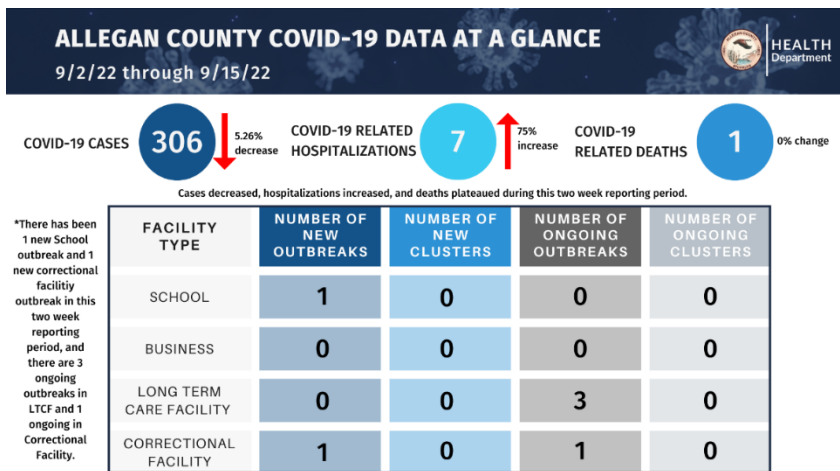
Starting September 20, instead of sending potential exposure notices, we are using a dashboard for each building so that parents/staff can make decisions based on their own evaluation of risk and which course of action to take. More information on this change can be found in the Exposure Letters and Schools sections within this update.

ACHD reviewed analytics related to this report, skimmed down the material, and reports where people can find the information directly. If there are certain topics you think should be included, please email [healthed@allegancounty.org](mailto:healthed@allegancounty.org), or fill out our inquiry form.

WHAT'S NEW AT A GLANCE:

- What it means to be up-to-date on COVID-19 vaccinations and where to find updated boosters.
- The Test Positivity Rate for Allegan County is trending **upward**, after trending downward the week prior.
- Weekly cases increased by more than 20% since the 8/23/2022 to 8/29/2022 reporting period
- The first human case of Swine Flu detected in Michigan, what to know and actions to take.
- What to do and where to get vaccinated if you have been exposed to MPV.

An overview of COVID-19 data in Allegan County from **9/2/22 to 9/15/22** can be found in the graphic below:



Previous BOC reports that may include background information for some of the topics discussed in this current report can be found [here](#).

COVID-19 MITIGATION COMPONENTS



Allegan County currently is at a low community transmission level for COVID-19. **ACHD continues to recommend the following:**

- Staying up-to-date on your COVID-19 vaccines
- Getting tested if you have symptoms, before and after traveling, and before gathering with others.

**Allegan County COVID-19 Community Level: Low**

Allegan County Health Department recommends everyone to:

Stay up to date on your COVID-19 Vaccines

Get tested if you have symptoms

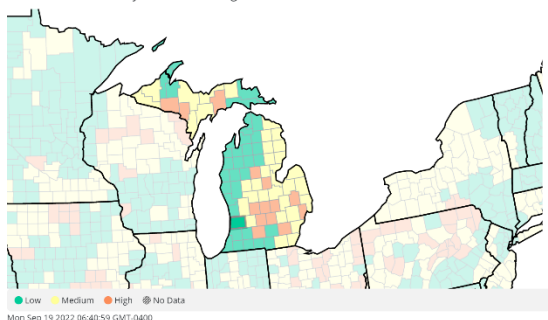
Actions including social distancing, frequent handwashing, wearing a well-fitted face mask, and isolation help lessen the level of transmission

Learn more about CDC's COVID-19 Community Levels [here](#).

#DoYourPart

COVID-19 Community Levels are a tool to help communities decide what prevention steps to take based on the latest data. These Community Levels can be low, medium, or high and **are determined by looking at hospital bed utilization, hospital admissions, and the total number of new COVID-19 cases in an area.** Find more about COVID-19 Community Levels [here](#).

COVID-19 Community Levels in Michigan



*Note: Counties surrounding Allegan County may be in a medium or high COVID-19 Community Level. If you work or visit other counties often, make sure to take precautions to protect yourself and others such as wearing a mask, washing your hands often, staying home if you feel sick, and social distancing when possible.*

Use the CDC's [COVID-19 County Check tool](#) to find out what the community level is for the county you will be visiting.

## ENHANCED ABILITY TO TEST

### COUNTY-LEVEL DATA AS OF SEPTEMBER 12, 2022

The Test Positivity Rate for Allegan County is trending **upward**, after trending downward the week prior. See the latest information for Allegan County For the latest information, visit [Dashboard | CDC | MI Start Map](#).

At this stage of the pandemic, percent positivity alone is no longer a strong indicator of the total number of individuals who tested positive, due to several factors – one being at-home testing. It is best to evaluate percent positivity with another metric, such as COVID-19 concentration levels in wastewater, to get a more accurate idea of the prevalence of the virus in an area. **The current 7-day positivity rate for Allegan County as of September 12 was 24.7% with 622.2 daily tests administered per million. This indicates a 5.5% increase in the 7-day positivity compared to the 8/23/2022 to 8/29/2022 reporting period, which had 612.3 daily tests administered per million.**

At this time, at-home tests are not reported in the Michigan Disease Surveillance System (MDSS) and therefore, are not included in the test positivity rates or case counts. **See the Appendix for a list of testing resources available to community members.**

## CASE INVESTIGATION AND CONTACT TRACING

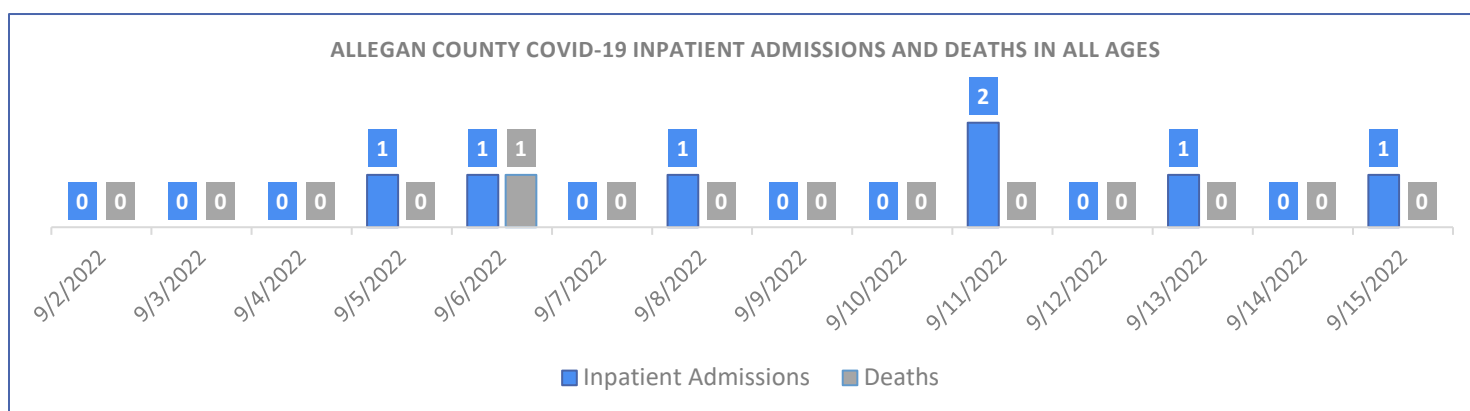
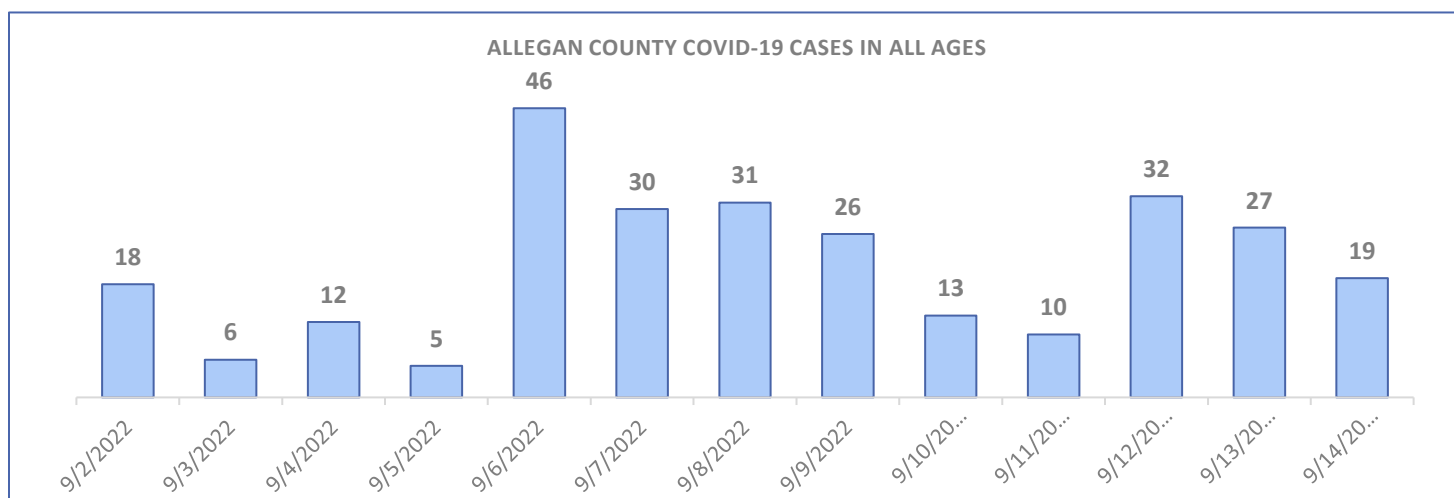
### ALLEGAN COUNTY COVID-19 COMMUNITY LEVEL: LOW

See the latest information for Allegan County For the latest information, visit [Dashboard | CDC | MI Start Map](#). As of 9/16/2022, Allegan County remained at a low COVID-19 community level based on the [CDC framework](#). **Data Takeaway: Models showed an increase in cases compared to the 8/23/2022 to 8/29/2022 reporting period. During the period 9/6/2022 to 9/12/2022, Allegan County's new weekly case rate was 158.4 per 100,000 population with 187 weekly cases.**

Data as of September 19, 2022

Weekly cases increased by more than 20% since the 8/23/2022 to 8/29/2022 reporting period (125.3 per 100,000 - 148 total weekly cases).

#### OVERVIEW OF COVID-19 CASES AND DEATHS IN THE LAST TWO WEEKS (9/2/2022 to 9/15/22)



#### DURING 9/2/2022 to 9/15/22 FOR ALLEGAN COUNTY:

- **306 total cases** were reported via the Michigan Disease Surveillance System (MDSS)
  - 186 confirmed cases and 120 probable cases related to SARS-CoV2 infection as reported
- 5.6% of the cases were reported as asymptomatic
- 37.6% of cases were reported as 'vaccine breakthrough' cases, which has slightly decreased from the previous two weeks
- **Seven reported hospitalizations<sup>1</sup>** related to SARS-CoV-2 infection
- There was **one death** related to SARS-CoV-2 infection
- 3.6% of the cases were reported to be related to international, domestic, and/or in-state travel
- From 9/1/2022 to 9/14/2022, the positivity rate<sup>2</sup> was a reported 20.9%

**ACHD continues to monitor the COVID-19 metrics for hospitalizations and deaths as this can show the risk of a medically significant COVID-19 variant or healthcare system strain.**

**306 cases were reported in the MDSS from 9/2/2022 to 9/15/22**

#### CASE INVESTIGATION<sup>3</sup>

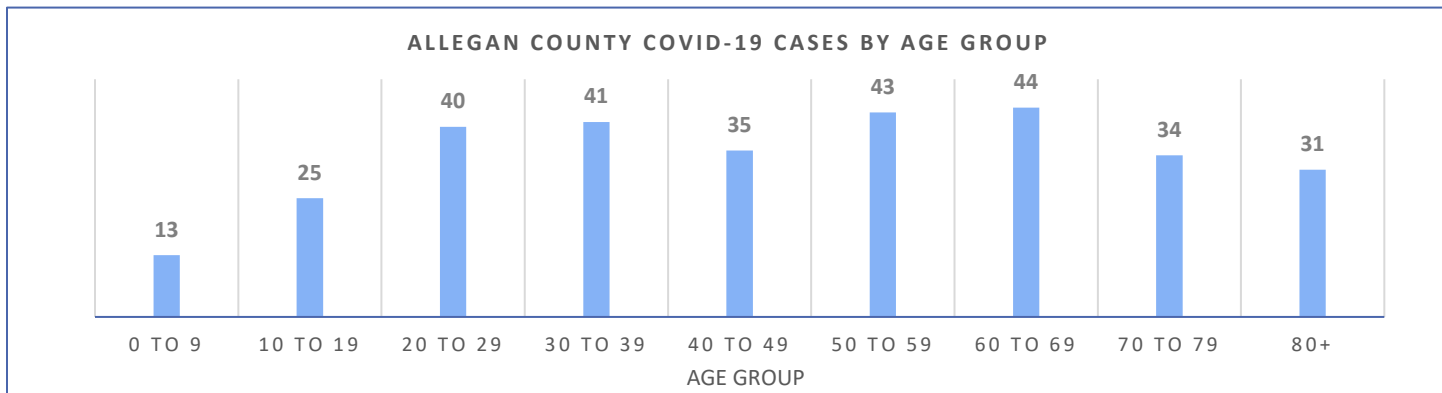
<sup>1</sup> COVID-19 may not be a primary cause of hospitalization in some of the reported cases in MDSS due to current capacity and data limitations; these data reported in MDSS are often limited by factors such as delayed case investigations and data back-filling

<sup>2</sup> As reported in the MI-HAN Regional Data File; Positivity Rate is calculated for percent positive persons for day and county

<sup>3</sup> Case investigation consists of contacting the individual and asking standard questions related to the disease and identifying those who might have been exposed.

ACHD is currently working to investigate all communicable disease cases. During the case investigation process, ACHD works to ensure all basic needs are being met for individuals and their families. All cases receive a Patient Education Genius (PEG) notification that is provided via email or text messages for a case investigation form.

CASES IN THE LAST TWO WEEKS, BY AGE GROUP (9/2/2022 to 9/15/22)



From 9/2/2022 TO 9/15/22 in MDSS: 14.4% of cases were reported in the 60 to 69 age group, which had the highest number of cases during this timeframe, and closely followed by the 50 to 59 (14.1%) and 30 to 39 (13.4%) and age groups. In comparison to the previous reporting period (8/19/22 to 9/1/22), case counts have significantly decreased for individuals in the 0 to 9 ages.

- 3.6% of cases were in quarantine at the time of symptom onset or positive test
- 12.1% of investigated cases were household close contacts<sup>4</sup>
- 0.3% of cases were reported as community contacts<sup>5</sup>
- 9.2% of cases were close contacts to those who work or live in a high-risk/congregate facility

**Notifying close contacts helps individuals know about exposure and allows close contacts to make decisions based on their own risk assessment.**

306 cases were reported in the MDSS from 9/2/2022 to 9/15/22

EXPOSURE LETTERS AND CLOSE CONTACTS IN SCHOOL SETTINGS

Starting September 20, ACHD will be using a dashboard format for each school building to notify parents and families of potential exposures to certain reportable communicable diseases, rather than sending potential exposure letters. This will allow parents/staff continue to make decisions based on their own evaluation of risk and which course of action to take.

In some circumstances, parents may still receive written notification for certain reportable communicable diseases. This dashboard will be updated starting Tuesday, September 20, 2022 by 5:00 pm on the [ACHD Website](#). If individuals do not have access to the internet or have language needs please call the Health Department at (269) 673-5411 option 1 for assistance.

OUTBREAKS & CLUSTERS IN ALLEGAN COUNTY

The table to the right shows the number of outbreaks<sup>6</sup> that ACHD has identified for high-risk settings as of September 15, 2022. **ACHD has identified one new outbreak related to Long-Term Care Facilities<sup>7</sup> and one new outbreak related to Schools, since the last update on September 8, 2022;** there were seven ongoing outbreaks reported to MDHHS as of September 15, 2022.

Type of Setting	Total Number of Outbreaks <sup>1</sup>
School	20
Business	8
Long Term Care <sup>1</sup>	31
Other Congregate Facilities <sup>1</sup>	3

<sup>4</sup> Household contact: person lived with someone who tested positive and later tested positive themselves.

<sup>5</sup> Community contact: person who was identified as a close contact in a setting other than a household

<sup>6</sup> Outbreak investigation codes are assigned by the first date of onset

<sup>7</sup> Data from 10/21/2021

ACHD has not identified any new outbreaks for businesses since February 17, 2022. ACHD has developed COVID-19 Business Mitigation Strategies Survey for businesses, Long-Term Care Facilities, daycares and schools to provide us with information on the current mitigation strategies they have in place. The surveys are sent out when an outbreak has been identified at a location.

## LONG TERM CARE & OTHER CONGREGATE CARE FACILITIES

From January 2022 to September 19, 2022, ACHD has connected **22** LTCFs in Allegan County with the IPRAT<sup>8</sup> Team for additional mitigation assistance<sup>9</sup>. Refer to [MDHHS Data and Modeling](#) for overall LTCF case counts in residents and staff. **ACHD shares forecasting wastewater readings with long-term and congregate care facilities in the monthly LTCF Newsletters, to help inform their COVID-19 mitigation strategies.**

565 resident cases and 55 resident deaths reported from January 1, 2020, to September 6, 2022<sup>10</sup>

881 staff cases have been reported from January 1, 2020, to September 6, 2022

## SUFFICIENT HEALTH CARE CAPACITY

### HOSPITALIZATIONS

Allegan County falls in the Region 5 Health Care Coalition. Some community members will also access hospitals in the Region 6 Health Care Coalition (Grand Rapids-Holland Region). The chart below lists the hospitals that Allegan County community members may access for COVID-19 and non-COVID-19-related health needs and their current capacity levels. For the latest information, visit [Dashboard | CDC | MI Start Map](#).

Find the current percentage of inpatient beds treating COVID-19 patients, for the [Grand Rapids Region](#) (Region 6), and [Kalamazoo Region](#) (Region 5). The **Grand Rapids Region** had **5.5%** of inpatient beds that are COVID-19 positive, as of September 12, 2022, which is **0.8% higher** than the previous reporting period, August 23 to August 29. The **Kalamazoo Region** had **7.3%** of inpatient beds that are COVID-19 positive, as of September 12, 2022, which is **the same** as the previous reporting period.

### HOSPITALS IN THE ALLEGAN COUNTY AREA

See [previous report from 8/11/22](#) for updates regarding hospital bed capacity. Hospital bed capacity information can be found on the MDHHS website: [Statewide Available PPE and Bed Tracking \(Michigan.gov\)](#)

## DEATHS (7 DAY AVERAGE)

Vaccinations have been shown to be effective at preventing deaths from COVID-19.

The 7-day average for daily deaths is currently less than 1, and is reflected as 0 on the Michigan Safe Start Map. For a complete view of the 7-day average daily deaths for Allegan and other counties over the course of the pandemic visit, [Dashboard | CDC | MI Start Map](#)

## BEST PRACTICES

### SCHOOLS

Starting September 20, ACHD will be using a dashboard format for each school building to notify parents and families of potential exposures to certain reportable communicable diseases, rather than sending potential exposure letters. This will allow parents/staff to continue to make decisions based on their own evaluation of risk and which course of action to take.

<sup>8</sup> MDHHS offers further support for facilities via the Infection Prevention and Resource Assessment Team (iPRAT) when ACHD identifies facilities that are experiencing a large number of positive COVID-19 tests.

<sup>9</sup> ACHD provides mitigation assistance to LTCFs that are identified as an outbreak facility through case investigations

<sup>10</sup> The information above represents COVID-19 data reported directly to MDHHS by licensed and operating Skilled Nursing, Home for the Aged and Adult Foster Care facilities (licensed to serve 13 or more individuals) in Michigan from January 1, 2020, through September 6, 2022

In some circumstances, parents may still receive written notification for certain reportable communicable diseases. This dashboard will be updated starting Tuesday, September 20, 2022 by 5:00 pm on the [ACHD Website](#). If individuals do not have access to the internet or have language needs please call the Health Department at (269) 673-5411 option 1 for assistance.

The CDC provides guidance on mitigation measures for schools in [Operational Guidance for K-12 Schools and Early Care and Education Programs to Support Safe In-Person Learning](#).

MDHHS shared an updated School Infection and Exposure infographic with local health departments. ACHD will be reviewing our local School Guidance documents to reflect the recommendations from MDHHS as needed.

**MDHHS**  
Michigan Department of Health & Human Services

	Who is Impacted	Public Health Recommendations
<b>COVID-19 Infection</b>	Any individual who tests positive for COVID-19 and/or displays COVID-19 symptoms (without an alternate diagnosis or negative COVID-19 test) regardless of vaccination status.	<ul style="list-style-type: none"> <li>Isolate at home for 5 days (day "0" is day symptoms begin or day test was taken for those without symptoms); and</li> <li>If symptoms have improved or no symptoms developed, may leave isolation after day 5 and wear a well-fitting mask, for 5 more days (ending after day 10).*</li> </ul>
<b>COVID-19 Exposure</b>	Close contact exposed to someone with COVID-19, regardless of vaccination status.	<ul style="list-style-type: none"> <li>Monitor symptoms for 10 days.</li> <li>Test 5 days after exposure and if symptoms develop.</li> <li>Wear a well-fitting mask around others for 10 days after exposure.</li> <li>Avoid unmasked activities or activities with higher risk of exposing vulnerable individuals.**</li> </ul>

\* You may remove your mask sooner than day 10 with two sequential negative antigen tests 48 hours apart. If a mask cannot be worn, 10 days of home isolation is recommended.  
 \*\* Activities with immunocompromised or other high-risk individuals, social/recreational activities in congregated settings or when community levels are high.

**BUSINESSES**

No new updates, please see the [previous report from September 8, 2022](#)

**COMMUNICATIONS**

COVID-19 Health Education has been a mandated service in this response. The following are metrics related to COVID communication efforts from 9/2/2022 – 9/15/2022:

- 3 Social media posts
- 7 Education materials created/updated
- 1 Community Update sent out

**FIRST HUMAN CASE OF SWINE FLU (INFLUENZA A - H1N2) IN MICHIGAN, WHAT TO KNOW**

On 9/9/22 the CDC confirmed the first human case of [Swine Flu or Influenza A \(H1N2\)](#) in the state. The infected individual was a Berrien County fairgoer who had contact with swine at the Berrien County Youth Fair in August.

Swine flu is spread through respiratory air droplets. A person becomes infected when the virus enters the eyes, nose, or mouth. [To reduce the spread of swine flu,](#)

- Don't eat, drink, or put anything in your mouth in pig areas
- Avoid close contact with pigs that look ill
- Avoid touching your eyes, nose, mouth

- Wash your hands often with soap and water, or use alcohol-based hand sanitizer if soap and water are not available

Swine flu symptoms in humans are similar to regular seasonal flu symptoms which include:

- Fever
- Lethargy
- Lack of appetite
- Coughing

For more information on minimizing the transmission of illness at livestock exhibitions, visit the [USDA website](#). For more information on swine influenza, [visit the CDC website](#). This information also can be found in our [9/13 Community Public Health Update](#).

### PREPARING FOR FLU SEASON

“Flu season” occurs in the **fall and winter**. While influenza viruses spread year-round, most of the time flu activity peaks between December and February, but activity can last as late as May. People at high risk from flu complications are older individuals, young children, pregnant women and people with certain medical conditions, such as asthma, diabetes and heart disease.

Anyone at any age can get very sick from the flu, so getting an annual flu shot to protect yourself and loved ones is important. Flu vaccines help to reduce the burden of flu illnesses, hospitalizations and deaths on the health care system each year. The [CDC recommends](#) everyone 6 months and older get an annual flu shot, ideally by the end of October.

Individuals can find a flu vaccine locally by visiting [www.vaccines.gov](http://www.vaccines.gov).

### MPV: WHAT TO DO IF YOU ARE EXPOSED AND WHERE TO GET VACCINATED

If you think you have monkeypox or have had close personal contact with someone who has monkeypox, consider [taking precautions](#) and visit a healthcare provider to help you decide if you need to be tested for monkeypox.

Getting vaccinated soon after exposure to someone with monkeypox, ideally within 4 days, provides you the best change to prevent the disease or make it less severe.

- If given between 4-14 days after the date of exposure, vaccination may reduce the symptoms of disease, but may not prevent the disease.

Post-exposure prophylaxis (PEP) is important for controlling outbreaks and preventing further transmission of monkeypox.

Use the [CDC vaccination locator tool](#) to help you find a monkeypox vaccine provider near you.

**If you think you may be eligible for vaccination, you can also request the monkeypox vaccine from ACHD by completing [this form](#) or by calling ACHD at 269-673-5411. The vaccine will be administered during ACHD business hours on a case by case basis, and appointment only.**

## COMMUNITY VACCINATION/HERD IMMUNITY/TREATMENT

### STAYING UP-TO-DATE ON COVID-19 VACCINATIONS AND BOOSTERS

Now that the new bivalent COVID-19 boosters are recommended for everyone ages 12 years and older at least 2 months after their last COVID-19 shot, many are wondering what being up-to-date on COVID-19 vaccines means:

- For individuals aged 6 months through 4 years, it means getting all COVID-19 primary doses
- For individuals aged 5 years and older, it means getting all COVID-19 primary series doses and the most recent COVID-19 booster recommended for you

**What does it mean to be up to date with COVID-19 vaccinations?**

- For ages 6 months through 4 years, it means getting all COVID-19 primary series doses
- For ages 5 years and older, it means getting all COVID-19 primary series doses and the most recent COVID-19 booster recommended for you

**COVID-19 VACCINE**

[cdc.gov/coronavirus](https://www.cdc.gov/coronavirus)

NCIRD 2022/09/08-01

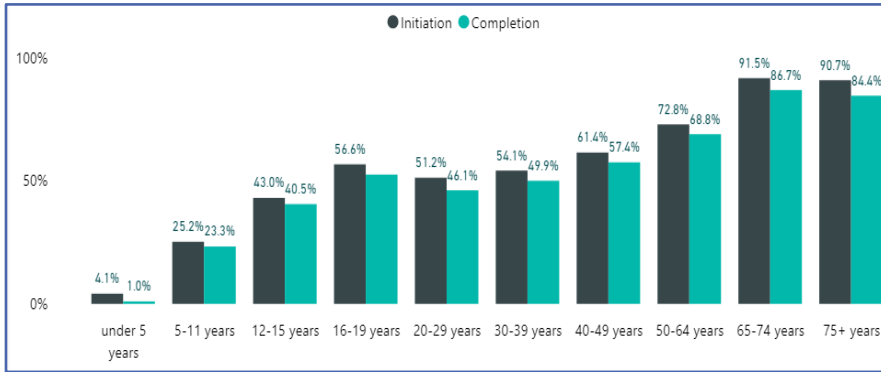


**Pfizer’s updated booster shot is recommended for individuals 12 and older, and Moderna’s updated booster shot is recommended for adults 18 and older.**

Individuals may choose to receive either the Pfizer or the Moderna bivalent booster, regardless of which primary series vaccine or original booster dose they had previously. To find a vaccine provider near you, visit [www.vaccines.gov](http://www.vaccines.gov).

ACHD currently has Pfizer and Moderna bivalent COVID-19 boosters available, by appointment only. **Interested eligible individuals should contact (269) 673-5411 option 1 to make their appointment.**

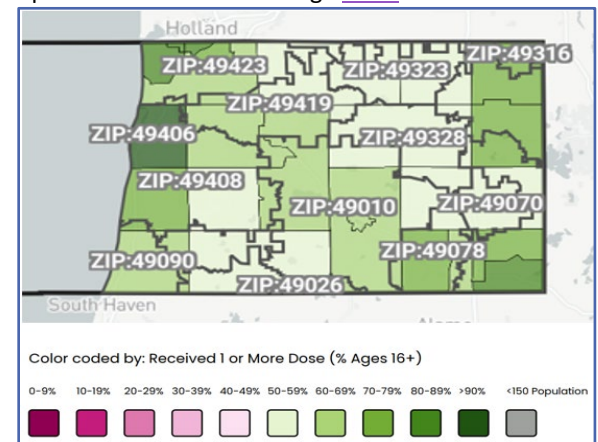
**COVID-19 VACCINE COVERAGE**



**VACCINATION COVERAGE BY AGE GROUP**

**Data as of 9/16/2022**

Explore the [MI Vaccine Dashboard](#) for the latest data. It is updated weekly on Wednesdays. The map on the left displays vaccine coverage for Allegan County. See Previous Reports for updates on Vaccine Coverage [here](#).



**VACCINATION COVERAGE BY ZIP CODE**

The map on the right shows the vaccination rates for residents aged 16 and older who received at least one dose of vaccine. The data is at the census tract<sup>11</sup>-level (colored sections) with an overlay of Allegan zip codes. Areas in the center of the county, with lower population counts, appear to have the lowest vaccination rates, while perimeter areas on the East and West sides of the county have higher vaccination rates overall. This data is based on a total population count of 115,250 as recorded in the 2018 US Census.

<sup>11</sup> Census tracts are geographic entities within counties with similar characteristics such as population traits, school enrollment, poverty level, median household income, housing vacancy, etc.

## VACCINE AVAILABILITY

Residents are encouraged to visit [www.vaccines.gov](http://www.vaccines.gov) to find vaccination clinics near them, or call ACHD at 269-673-5411 to schedule an appointment.

## VACCINE EFFECTIVENESS (VE)

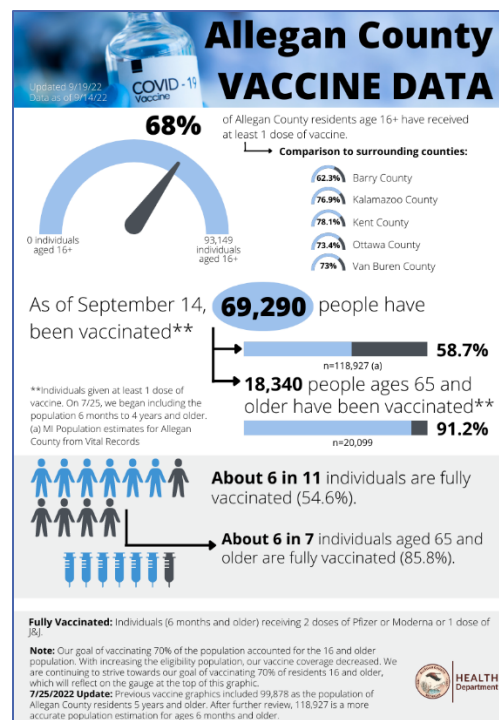
Current [data](#) continues to show that COVID-19 vaccines are **an important layer in reducing the severity of illness, and the burden of hospitalizations and deaths** in children, adolescents, and adults, **even with the emergence of the predominant new Omicron variants** such as BA.4 and BA.5.

Being [up to date](#) on COVID-19 vaccines is crucial in reducing the burden of hospitalizations and deaths. Refer to further data from the CDC studies on nationwide COVID-19 VE Surveillance [here](#).

**BREAKTHROUGH SURVEILLANCE DATA:** For more information and the latest data on the rates of COVID-19 breakthrough cases, hospitalizations, and deaths, please refer to [CDC COVID Data Tracker: Rates of COVID-19 Cases and Deaths by Vaccination Status](#)

## LOCAL HEALTH DEPARTMENT (LHD) BREAKTHROUGH DATA DISTRIBUTION

Refer to the [previous report from 6/21/22](#) for updates regarding breakthrough data distribution.



## COVID-19 SURVEILLANCE

7-DAY METRICS <sup>12</sup>	STATEWIDE	NATIONWIDE	GLOBAL
Cases	18,375	59,856	3.378M
Hospital Admissions	154.86	4,371	No data available
Deaths	196	358	11.562K
Percent Population Fully Vaccinated	64.8%	67.7%	33.53M <sup>13</sup>
Percent Positivity	15-19.9 %	12.2%	No data available

### STATEWIDE (MICHIGAN)

- Find the latest [Michigan Coronavirus Data](#).
- Refer to the [September 13, 2022 MDHHS data and modeling](#) for current trends on cases, hospitalizations, and deaths associated with COVID-19.
- For more information and data on seasonal projections of cases, hospitalizations, and deaths, visit [COVID-19 Scenario Modeling Hub](#).

### NATIONWIDE (UNITED STATES)

- Find the latest Nationwide data on [CDC's Cases and Data website](#).
- For more information refer to the [CDC COVID Data Tracker Weekly Review](#)

<sup>12</sup> Statewide and Nationwide data as of 9/16/2022 [COVID Data Tracker Weekly Review | CDC](#); Global data update as of 9/18/2022 [COVID-19 Map - Johns Hopkins Coronavirus Resource Center \(jhu.edu\)](#)

<sup>13</sup> This is not a percentage but a 7-day average of weekly doses administered globally

## GLOBAL

- For additional information and the global pandemic data, refer to [WHO's weekly Epidemiological Situation Report](#)
- For more information on currently circulating variants<sup>14</sup> (including VOIs, VUMs, and VOCs) and its classifications, visit [Tracking SARS-CoV-2 Variants](#)

## WASTEWATER SURVEILLANCE

See the most recent [MDHHS data and modeling update](#) for the Michigan SWEEP Sentinel Wastewater Summary.

Hope College has collaborated with ACHD to produce a dashboard, which displays the most recent wastewater readings and case counts. With this dashboard, ACHD has been able to forecast a rise in cases, which has improved mitigation responses.

Since the last reporting period, **seven** facilities around these treatment sites have reported 2+ COVID-19 cases. **The table above shows three Allegan sewer shed sites that has the most current and accurate data readings.**

Allegan Sewershed Sites	Trend Dates		Current Trend Patterns
TPA	9/15/2022	↘	Decreasing
TPP	9/14/2022	↘	Decreasing
TPDS	9/13/2022	↗	Increasing



The adjacent map shows current wastewater sewer shed sites that Hope College is monitoring in Allegan County.

The colored circles<sup>15</sup> of differing sizes represent the concentration of COVID-19 in the wastewater as of September 15, 2022 (TPA<sup>16</sup>, TPP<sup>17</sup>, TPDS<sup>18</sup>), which have existing data points for the most recent nine calendar days (9/6/2022 – 9/15/2022). Read more about the [method of using wastewater surveillance data](#), to monitor case patterns at individual and population levels as it relates to the SARS-CoV-2

infection.

## EMERGING VARIANT UPDATES

- See [CDC Nowcast Projections](#) (nationwide) for data estimations on the predominant Omicron sublineages and additional information on CDC's monitoring of nationwide variant proportions [here](#).
- See the most recent [MDHHS data and modeling update](#) for the latest variant information.
- [Quick excerpts from the American Association of Medical Colleges \(AAMC\) on BA.5, bivalent vaccines, and Paxlovid](#)
- ACHD continues to monitor all Omicron sub-lineages and deploy response measures accordingly.

## EPIDEMIOLOGIC SURVEILLANCE

## MONKEYPOX (MPV)

For background information on MPV and previous information discussed, refer to the [6/21/22 report](#).

**UPDATES:** Refer to the following links to view MDHHS and the CDC's MPV Situation Summary:

- [Michigan Case Counts](#)

<sup>14</sup> SARS-CoV-2 variants include variants of interest (VOI), variants under monitoring (VUM), and variants of concern (VOC)

<sup>15</sup> The areas with red circles seen on the map correlate with the increase in cases at LTCFs and other congregate care facilities during this reporting period

<sup>16</sup> Allegan Water Resource Recovery Facility

<sup>17</sup> Plainwell Wastewater Treatment Plant

<sup>18</sup> Douglas/Saugatuck Wastewater Treatment Plant

- [2022 U.S. Map & Case Count](#)
- [2022 Monkeypox Outbreak Global Map](#)

## HIGHLY PATHOGENIC AVIAN INFLUENZA (HPAI)

---

Michigan Department of Agriculture and Rural Development (MDARD) has confirmed 2 detections of HPAI in non-commercial backyard flocks.

[September 13, 2022 - Highly Pathogenic Avian Influenza Detected in Ingham County Backyard Flock](#)

## RECENT EMERGING HEALTH THREATS: AT A QUICK GLANCE

---

### [Adenovirus and Acute Hepatitis](#)

- No new updates; see the [previous BOC report from 9/8/22](#).

### [Arboviruses](#)

- **UPDATES:** [Michigan Weekly Arbovirus Summary September 15, 2022](#) and the Annual EZID Surveillance Summary for 2021 can be found [here](#)

### [Rabies](#)

- As of September 13, 2022, Rabies-positive animals in Michigan include **31 Bats** and **1 Skunk**. For positive animal counts by county, see this [map](#).

### [Salmonella Outbreaks Linked to Small Turtles](#)

- No new updates; see the [previous BOC report from 9/8/22](#).

### [Shiga toxin-producing Escherchia coli \(STEC\)](#)

- No new updates; see the [previous BOC report from 9/8/22](#).

## SOURCES

- Allegan County Health Department Facebook page
- [Centers for Disease Control and Prevention](#)
- [CDC COVID-19 Booster Interactive Tool](#)
- [CDC COVID-19 Data Tracker](#)
- [CDC Current Outbreak List | CDC](#)
- [CDC Flu](#)
- [CDC Health Alert Network](#)
- [CDC MPV Vaccine Locator](#)
- [CDC Provisional COVID-19 Deaths: Focus on Ages 0-18 Years](#)
- [CDC Stay Up-to-date on Vaccinations](#)
- [CDC Swine Flu](#)
- [COVID-19 Bivalent Vaccine Boosters FDA page](#)
- [COVID Data Tracker Weekly Review](#)

Data as of September 19, 2022

- [COVID-19 Vaccine Dashboard](#)
- CHN Associates, Student, and Family Assistance Program Monthly Report
- [Division of Vector-Borne Diseases \(DVBD\) | Division of Vector-Borne Diseases | NCEZID | CDC](#)
- [FDA Authorizes Bivalent Booster Doses](#)
- [Find a COVID-19 Vaccine Near You](#)
- HONU
- [Lighthouse \(mi-lighthouse.org\)](#)
- [Long Term Care Data](#)
- [MDHHS Monkeypox Page](#)
- [MDHHS School Outbreak Reporting](#)
- [MDHHS: School Age Case Data Dashboard](#)
- [MI Bridges](#)
- [MI COVID response Data and Modeling](#)
- [MI Weekly Arbovirus Summary, 2022 \(michigan.gov\)](#)
- [Michigan Coronavirus: COVID-19 Vaccine](#)
- [Michigan COVID-19 Wastewater Testing and SWEEP Dashboard](#)
- [Michigan Coronavirus Data](#)
- Michigan Department of Health and Human Services (MDHHS) Breakthrough Cases Data File
- Michigan Disease Surveillance System (MDSS)
- [Michigan DNR Eyes in the Field](#)
- Michigan Health Alert Network (MIHAN)
- [MI Safe Start Map and CDC Indicators](#)
- [New COVID-19 Cases Worldwide - Johns Hopkins Coronavirus Resource Center \(jhu.edu\)](#)
- [Office of International Health and Biodefense - United States Department of State](#)
- [Our World in Data - Coronavirus \(COVID-19\) Hospitalizations](#)
- [Previous BOC report from September 8](#)
- [Sewer Coronavirus Alert Network \(SCAN\) \(wastewaterscan.org\)](#)
- [Technical Report: Acute Hepatitis of Unknown Cause | CDC](#)
- [US Food and Drug Administration](#)
- [USDA Swine Flu Safety Measures](#)
- [World Health Organization Coronavirus Dashboard](#)
- <https://www.who.int/emergencies/diseases/novel-coronavirus-who> Coronavirus disease (COVID-19) Weekly Epidemiological Update and Weekly Operational Update2019/situation-reports

## Allegan County COVID-19 Community Level: LOW

Allegan County Health Department recommends everyone to:



Stay up to date on your COVID-19 Vaccines



Get tested if you have symptoms, before and after traveling, and before gathering with others.

Actions including social distancing, frequent handwashing, wearing a well-fitted face mask, and isolation help lessen the level of transmission. People may choose to mask at any time.

People with symptoms, a positive test, or exposure to someone with COVID-19 should wear a mask.



Learn more about CDC's COVID-19 Community Levels by visiting [www.covid.cdc.gov](http://www.covid.cdc.gov)

#DoYourPart

## Allegan County COVID-19 Community Level: LOW

### Pick-up Free Masks

- Monday-Friday 8:30am to 4:30pm at the Allegan County Health Department (3255 122nd Ave, Allegan)
  - As supplies last
- At select local units of government and libraries.
  - Visit [allegancounty.org/covid](http://allegancounty.org/covid) to view the list of agencies under our Mask Information page.

### Find COVID-19 Treatments

- Find information and options near you: [michigan.gov/covid19therapy](http://michigan.gov/covid19therapy)
- View a test to treat location near you: [aspr.hhs.gov/TestToTreat](http://aspr.hhs.gov/TestToTreat)
- Talk to your doctor about treatment options if you test positive for COVID-19.

### Get Tested:

- Pick-up test kits locally:
  - Visit [www.allegancounty.org/covid](http://www.allegancounty.org/covid) to view pick-up locations under our Testing page.
- Find a community testing site near you at:
  - Allegan County Transportation Building (750 Airway Dr, Allegan) on Wednesdays and Fridays from 12 pm to 5 pm.
  - Visit [www.solvehealth.com](http://www.solvehealth.com) for more locations near you.

### Stay up-to-date on COVID-19 Vaccines

- Find vaccine clinics near you at [vaccines.gov](http://vaccines.gov)
- Or call ACHD at 269-673-5411 to schedule an appointment



Follow CDC's isolation guidelines and stay home if you develop symptoms or test positive.

#DoYourPart

FREE AT-HOME TEST KITS FROM MDHHS AVAILABLE AT 2 LIBRARIES IN ALLEGAN COUNTY:

- Allegan District Library (331 Hubbard St, Allegan)
- Fennville District Library (400 W Main St, Fennville)

FREE COMMUNITY TESTING EVENTS ARE HELD EVERY WEDNESDAY AND FRIDAY AT THE ALLEGAN COUNTY TRANSPORTATION BUILDING FROM 12 PM – 5 PM. THESE EVENTS OFFER PCR AND RAPID TESTING OPTIONS.

VISIT THE [MDHHS COMMUNITY BASED POP-UP TESTING PAGE](#) TO SIGN UP FOR THE TESTING EVENTS AT ALLEGAN TRANSPORTATION BUILDING AND TO FIND OTHER TESTING SITES NEAR YOU.

Visit <https://www.solvehealth.com/covid-testing> to find additional COVID-19 sites near you.

COVID-19 testing location finder: [Coronavirus - Test](#)

If residents are struggling to find accessible testing, they can call ACHD at 269-673-5411 option 2 and we can help them navigate the systems.

## MONKEYPOX: What to Know



### How it spreads:

- Direct contact with the infectious rash, scabs, or body fluids
- Respiratory secretions during prolonged, face-to-face contact, or during intimate physical contact, such as kissing, cuddling, or sex
- Touching items (such as clothing or linens) that previously touched the infectious rash or body fluids
- Pregnant people can spread the virus to their fetus through the placenta

The illness typically lasts 2-4 weeks. People who do not have monkeypox symptoms cannot spread the virus to others.



### Symptoms:

- Fever
- Headache
- Muscle aches and backaches
- Chills
- Exhaustion
- Swollen lymph nodes
- A rash that can look like pimples or blisters

### Prevention:

- Avoid close, skin-to-skin contact with people who have a rash that looks like monkeypox.
- Do not touch the rash or scabs of a person with monkeypox.
- Do not kiss, hug, cuddle or have sex with someone with monkeypox.



- Do not share eating utensils or cups with a person with monkeypox.
- Do not handle or touch the bedding, towels, or clothing of a person with monkeypox.
- Wash your hands often with soap and water or use an alcohol-based hand sanitizer

If you feel sick or have symptoms, do not attend any gathering, and contact your healthcare provider.