



COVID-19 AND OTHER EMERGING PUBLIC HEALTH TOPICS

BOARD OF COMMISSIONER UPDATE

NOVEMBER 10, 2022
Data as of November 7, 2022

CONTENTS

EXECUTIVE SUMMARY.....	2
COVID-19 MITIGATION COMPONENTS	2
ENHANCED ABILITY TO TEST	3
COUNTY-LEVEL DATA AS OF NOVEMBER, 3 2022	3
CASE INVESTIGATION AND CONTACT TRACING	3
ALLEGAN COUNTY COVID-19 COMMUNITY LEVEL: LOW.....	3
OVERVIEW OF COVID-19 CASES AND DEATHS IN THE LAST TWO WEEKS (10/21/2022 TO 11/3/22)	3
CASE INVESTIGATION.....	4
EXPOSURE LETTERS AND CLOSE CONTACTS IN SCHOOL SETTINGS	5
OUTBREAKS & CLUSTERS IN ALLEGAN COUNTY	5
LONG TERM CARE & OTHER CONGREGATE CARE FACILITIES (LTCF)	5
SUFFICIENT HEALTH CARE CAPACITY	6
HOSPITALIZATIONS	6
DEATHS (7 DAY AVERAGE)	6
BEST PRACTICES	6
SCHOOLS	6
BUSINESSES.....	6
COMMUNICATIONS	6
INCREASED CASES OF RSV, ACTIONS TO TAKE	7
FLU, COMMON COLD, COVID-19, OR ALLERGIES?	7
AT-HOME COVID-19 TESTS: WHEN TO TEST AND ACCURACY OF TESTS.....	8
COMMUNITY VACCINATION/HERD IMMUNITY/TREATMENT	9
COVID-19 VACCINE COVERAGE.....	9
VACCINATION COVERAGE BY AGE GROUP	9
VACCINATION COVERAGE BY ZIP CODE	10
VACCINE AVAILABILITY.....	10
VACCINE EFFECTIVENESS (VE).....	10
LOCAL HEALTH DEPARTMENT (LHD) BREAKTHROUGH DATA DISTRIBUTION.....	10
COVID-19 SURVEILLANCE	10
EPIDEMIOLOGIC SURVEILLANCE	11
SOURCES	13
APPENDICES	14

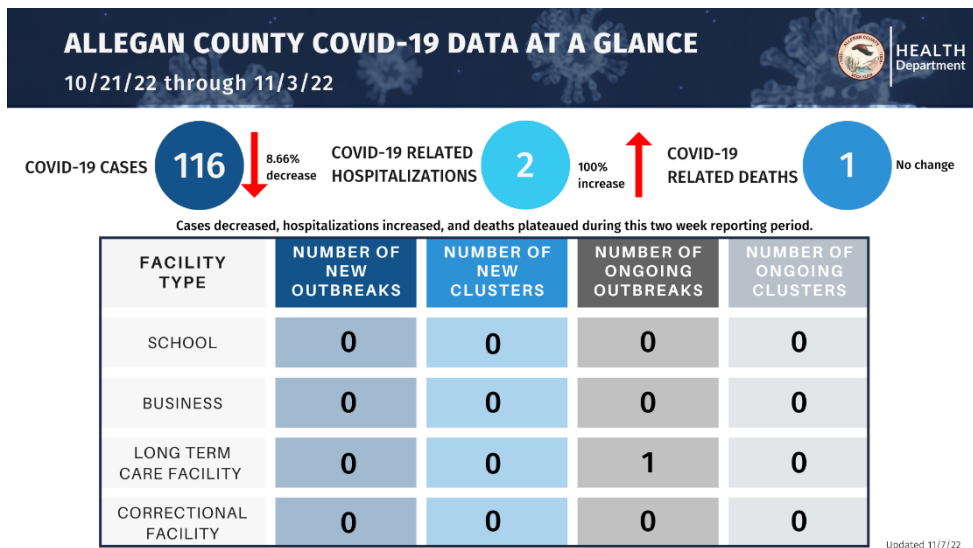
EXECUTIVE SUMMARY

The following report contains COVID-19-related data from **October 21, 2022 to November 3, 2022**, on the 5 mitigation components Allegan County Health Department (ACHD) previously identified. This report contains local COVID-19 data for Allegan County, information on vaccination data, wastewater surveillance, emerging variant updates, and other resources regarding COVID-19 mitigation. This report also contains epidemiological surveillance and health education on other ongoing and emerging public health topics including monkeypox (MPV), and other regional epidemiological topics at a glance. ACHD continues to monitor local, statewide, and global COVID-19 data, and continues to follow the Michigan Department of Health and Human Services (MDHHS) and the Centers for Disease Control and Prevention (CDC) recommendations. Previous BOC reports that may include background information for some of the topics discussed in this current report can be found [here](#).

WHAT'S NEW AT A GLANCE:

- Increased cases of Respiratory Syncytial Virus (RSV) Michigan, actions to take to prevent the spread.
- Knowing the difference between cold, COVID-19, flu, and allergy symptoms to help protect yourself and loved ones.
- COVID-19 cases **decreased** in this two-week reporting period.
- At-home test accuracy, when to test, and where to find tests.
- Updated CDC Monkeypox toolkit for Schools and Early Child Care.

An overview of COVID-19 data in Allegan County from **10/21/22 to 11/3/22** can be found in the graphic below:



COVID-19 MITIGATION COMPONENTS



Allegan County currently is at a low community transmission level for COVID-19. **ACHD continues to recommend the following:**

- Staying up-to-date on your COVID-19 vaccines
- Getting tested if you have symptoms, before and after traveling, and before gathering with others.

Allegan County COVID-19 Community Level: Low

Allegan County Health Department recommends everyone to:

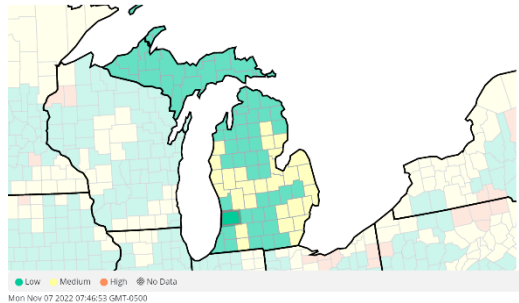
- Stay up to date on your COVID-19 Vaccines
- Get tested if you have symptoms

Actions including social distancing, frequent handwashing, wearing a well-fitted face mask, and isolation help lessen the level of transmission

Learn more about CDC's COVID-19 Community Levels [here](#). #DoYourPart

COVID-19 Community Levels are a tool to help communities decide what prevention steps to take based on the latest data. These Community Levels can be low, medium, or high and **are determined by looking at hospital bed utilization, hospital admissions, and the total number of new COVID-19 cases in an area.** Find more about COVID-19 Community Levels [here](#).

COVID-19 Community Levels in Michigan



Note: Counties surrounding Allegan County may be in a medium or high COVID-19 Community Level. If you work or visit other counties often, make sure to take precautions to protect yourself and others such as wearing a mask, washing your hands often, staying home if you feel sick, and social distancing when possible.

Use the CDC's [COVID-19 County Check tool](#) to find out what the community level is for the county you will be visiting.

ENHANCED ABILITY TO TEST

COUNTY-LEVEL DATA AS OF November, 3 2022

The Test Positivity Rate for Allegan County is trending **upward**, after trending downward the week prior. See the latest information for Allegan County For the latest information, visit [Dashboard | CDC | MI Start Map](#).

At this stage of the pandemic, percent positivity alone is no longer a strong indicator of the total number of individuals who tested positive, due to several factors – one being at-home testing. It is best to evaluate percent positivity with another metric, such as COVID-19 concentration levels in wastewater, to get a more accurate idea of the prevalence of the virus in an area. **The current 7-day positivity rate for Allegan County as of November 3 was 11.1% with 468.5 daily tests administered per million. This indicates a 3.8% increase in the 7-day positivity compared to the 10/11/2022 to 10/17/2022 reporting period, which had 451.2 daily tests administered per million.**

At-home tests are currently not reported in the Michigan Disease Surveillance System (MDSS) and therefore, are not included in the test positivity rates or case counts. **See the Appendix for a list of testing resources available to community members.**

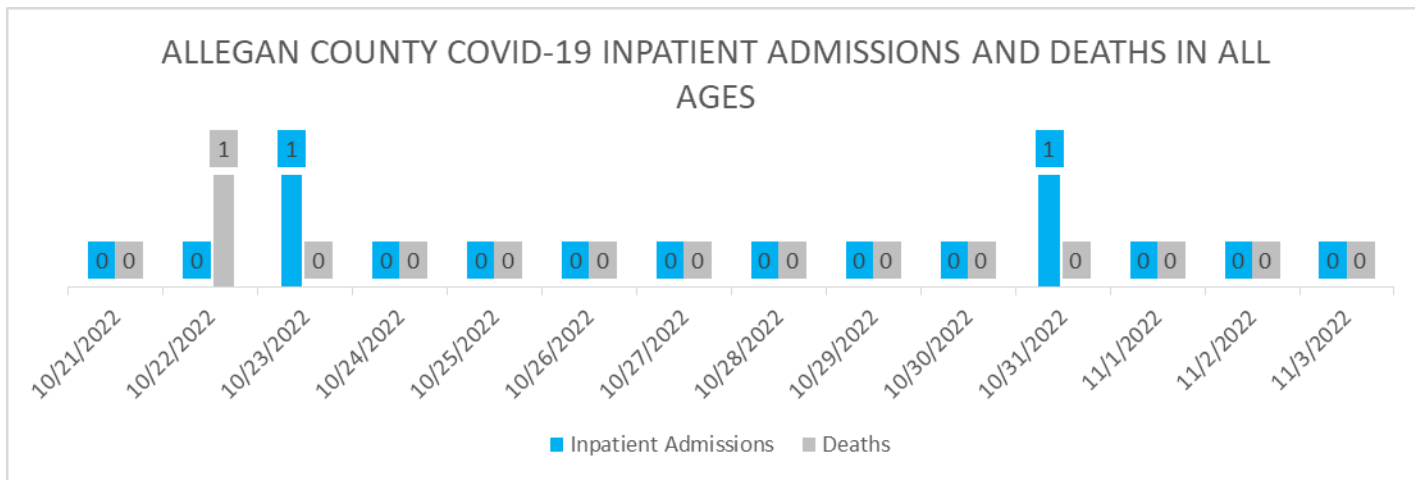
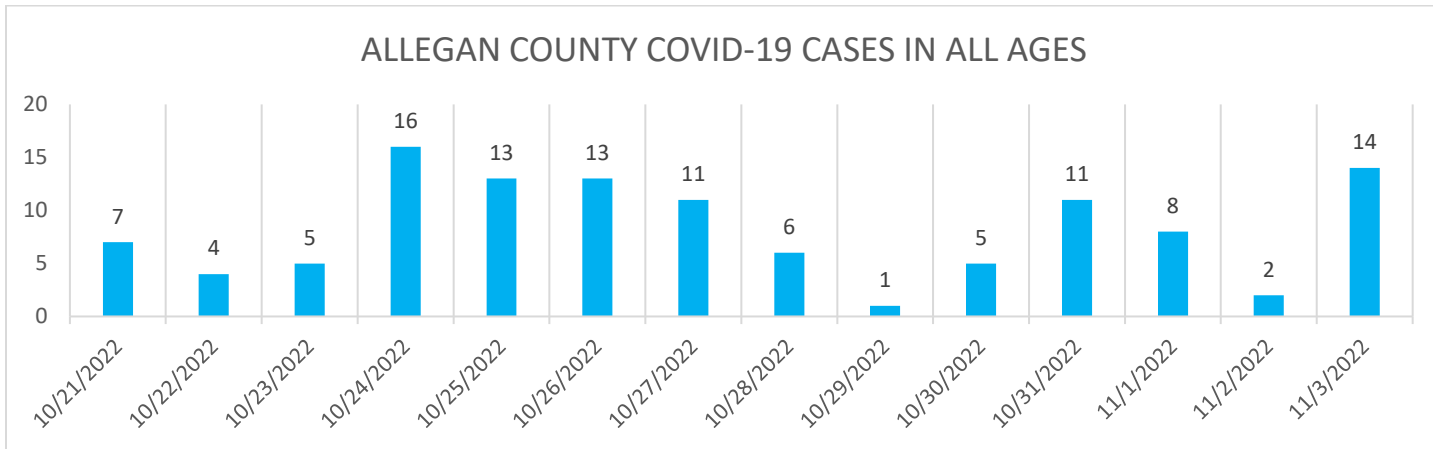
CASE INVESTIGATION AND CONTACT TRACING

ALLEGAN COUNTY COVID-19 COMMUNITY LEVEL: Low

See the latest information for Allegan County For the latest information, visit [Dashboard | CDC | MI Start Map](#). As of 11/3/2022, Allegan County is in a low community level based on the [CDC framework](#). **Data Takeaway: Models showed a decrease in cases compared to the 10/11/2022 to 10/17/2022 reporting period. During the period 10/28/2022-11/3/2022, Allegan County's new weekly case rate was 39.8 per 100,000 population with 47 weekly cases.**

Weekly cases decreased by more than 14% since the 10/11/2022-10/17/2022 reporting period (55 per 100,000 – 47 total weekly cases).

OVERVIEW OF COVID-19 CASES AND DEATHS IN THE LAST TWO WEEKS (10/21/2022 to 11/3/22)



DURING 10/21/2022 to 11/3/22 FOR ALLEGAN COUNTY:

- **116 total cases** were reported via the Michigan Disease Surveillance System (MDSS)
 - o 81 confirmed cases and 35 probable cases related to SARS-CoV2 infection as reported
- 1.7% of the cases were reported as asymptomatic
- 28.4% of cases were reported as ‘vaccine breakthrough’ cases, which has slightly increased from the previous two weeks
- **Two** reported **hospitalizations**¹ related to SARS-CoV-2 infection
- There was **one death** related to SARS-CoV-2 infection
- **6.9%** of the cases were reported to be related to international, domestic, and/or in-state travel
- From 10/20/2022 to 11/2/2022, the positivity rate² was a reported 11.3%

ACHD continues to monitor the COVID-19 metrics for hospitalizations and deaths as this can show the risk of a medically significant COVID-19 variant or healthcare system strain.

CASE INVESTIGATION³

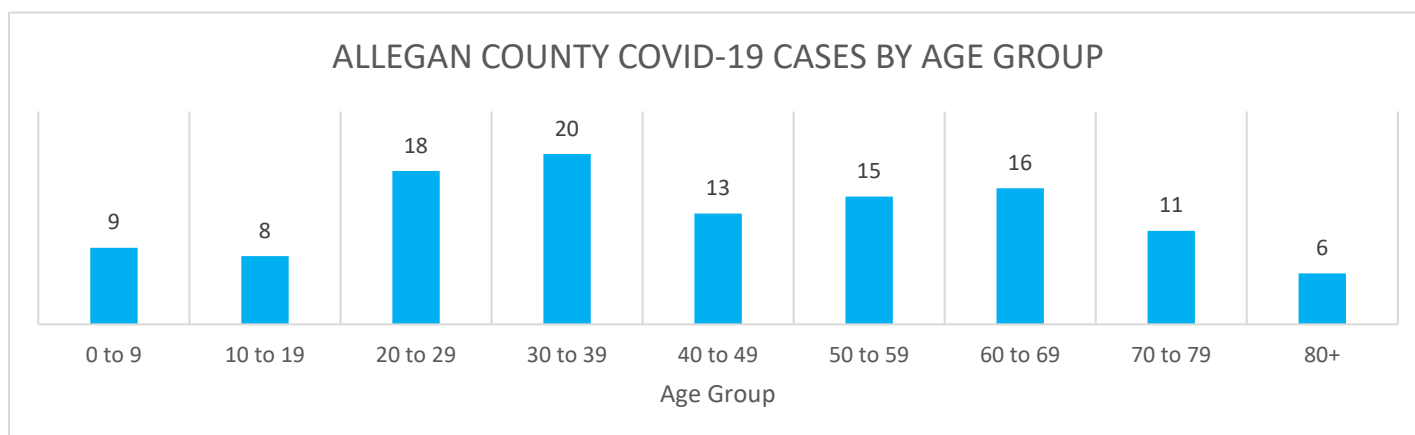
ACHD is currently working to investigate all communicable disease cases. During the case investigation process, ACHD works to ensure all basic needs are being met for individuals and their families. All cases receive a Patient Education Genius (PEG) notification that is provided via email or text messages for a case investigation form.

¹ COVID-19 may not be a primary cause of hospitalization in some of the reported cases in MDSS due to current capacity and data limitations; these data reported in MDSS are often limited by factors such as delayed case investigations and data back-filling

² As reported in the MI-HAN Regional Data File; Positivity Rate is calculated for percent positive persons for day and county

³ Case investigation consists of contacting the individual and asking standard questions related to the disease and identifying those who might have been exposed.

CASES IN THE LAST TWO WEEKS, BY AGE GROUP 10/21/2022 to 11/3/2022)



From 10/21/2022 TO 11/3/22 in MDSS: 17.2% of cases were reported in the 30 to 39 age group, which had the highest number of cases during this timeframe, and closely followed by the 20 to 29, at 15.5%, and 60 to 69 age groups, at 13.8 % each. In comparison to the previous reporting period (10/7/22 to 10/20/22), case counts have slightly increased for individuals in the 0 to 9 ages (Up to 9 from 8 previously).

- **3.4%** of cases were **in quarantine** at the time of symptom onset or positive test
- **1.7%** of investigated cases were **household close contacts**⁴
- **0.9%** of cases were reported as **community contacts**⁵
- **0.0%** of cases were close contacts to those who work or live in a **high-risk/congregate facility**

Notifying close contacts helps individuals know about exposure and allows close contacts to make decisions based on their own risk assessment.

EXPOSURE LETTERS AND CLOSE CONTACTS IN SCHOOL SETTINGS

As of September 20, ACHD is using a dashboard format for each school building to notify parents and families of potential exposures to certain reportable communicable diseases, rather than sending potential exposure letters.

This dashboard can be found on the [ACHD Website](#). If individuals do not have access to the internet or have language needs please call the Health Department at (269) 673-5411 option 1 for assistance.

OUTBREAKS & CLUSTERS IN ALLEGAN COUNTY

The table to the right shows the number of outbreaks⁶ that ACHD has identified for high-risk settings from October 12, 2021 to November 3, 2022. **ACHD has identified one new outbreaks related to Long-Term Care Facilities⁷ and no new outbreaks related to Schools, since the last update on October 20, 2022;** there was **one** ongoing outbreak reported to MDHHS as of November 3, 2022.

Type of Setting	Total Number of Outbreaks ¹
School	20
Business	8
Long Term Care ¹	32
Other Congregate Facilities ¹	3

ACHD has not identified any new outbreaks for businesses since February 17, 2022. ACHD has developed COVID-19 Business Mitigation Strategies Survey for businesses, Long-Term Care Facilities, daycares and schools to provide us with information on the current mitigation strategies they have in place. The surveys are sent out when an outbreak has been identified at a location.

LONG TERM CARE & OTHER CONGREGATE CARE FACILITIES (LTCF)

⁴ Household contact: person lived with someone who tested positive and later tested positive themselves.

⁵ Community contact: person who was identified as a close contact in a setting other than a household

⁶ Outbreak investigation codes are assigned by the first date of onset

⁷ Data from 10/21/2021

From January 2022 to November 3, 2022, ACHD connected **23** LTCFs in Allegan County with the IPRAT⁸ Team for additional mitigation assistance⁹. Refer to [MDHHS Data and Modeling](#) for overall statewide LTCF case counts in residents and staff. **ACHD shares forecasting wastewater readings with long-term and congregate care facilities in the monthly LTCF Newsletters, to help inform their COVID-19 mitigation strategies.**

613 resident cases and 55 resident deaths reported from January 1, 2020, to October 25, 2022¹⁰

929 staff cases have been reported from January 1, 2020, to October 25, 2022

SUFFICIENT HEALTH CARE CAPACITY

HOSPITALIZATIONS

Allegan County falls in the Region 5 Health Care Coalition. Some community members will also access hospitals in the Region 6 Health Care Coalition (Grand Rapids-Holland Region). For the latest information, visit [Dashboard | CDC | MI Safe Start Map](#).

Find the current percentage of inpatient beds treating COVID-19 patients, for the [Grand Rapids Region](#) (Region 6), and [Kalamazoo Region](#) (Region 5). The **Grand Rapids Region** had **5.1%** of inpatient beds that are COVID-19 positive, as of October 31, 2022, which is **1.5% higher** than the previous reporting period. The **Kalamazoo Region** had **7.1%** of inpatient beds that are COVID-19 positive, as of October 31, 2022, which is **0.1% higher** than the previous reporting period.

HOSPITALS IN THE ALLEGAN COUNTY AREA

Hospital bed capacity information can be found on the MDHHS website: [Statewide Available PPE and Bed Tracking \(Michigan.gov\)](#)

PEDIATRIC HOSPITALIZATIONS

Michigan pediatric intensive care unit hospital beds are currently 89% occupied, according to data from the Michigan Health & Hospital Association (MHA) and Michigan Department of Health & Human Services (MDHHS). Hospitals are also reporting large surges in young patients visiting emergency departments, for both emergent and non-emergent care.

DEATHS (7 DAY AVERAGE)

The 7-day average for daily deaths is currently more than 1, and is reflected as 1 on the Michigan Safe Start Map. For a complete view of the 7-day average daily deaths for Allegan and other counties over the course of the pandemic visit, [Dashboard | CDC | MI Start Map](#)

BEST PRACTICES

SCHOOLS

CDC released an updated [Monkeypox Toolkit for Schools and Early Care and Education Programs](#). In this toolkit, school and ECE administrators can find resources for their populations, including links to share with staff, parents, students, and caregivers.

BUSINESSES

As we enter flu and respiratory virus season, Long-term Care Facilities (LTCF) should refer to the [MDHHS Guidelines for Influenza and Respiratory Virus Outbreaks in Long-Term Care Facilities document](#) updated October 2022.

COMMUNICATIONS

⁸ MDHHS offers further support for facilities via the Infection Prevention and Resource Assessment Team (iPRAT) when ACHD identifies facilities that are experiencing a large number of positive COVID-19 tests.

⁹ ACHD provides mitigation assistance to LTCFs that are identified as an outbreak facility through case investigations

¹⁰ The information above represents COVID-19 data reported directly to MDHHS by licensed and operating Skilled Nursing, Home for the Aged and Adult Foster Care facilities (licensed to serve 13 or more individuals) in Michigan from January 1, 2020, through October 4, 2022

COVID-19 Health Education has been a mandated service in this response. The following are metrics related to COVID communication efforts from 10/21/2022 – 11/3/2022:

- 2 Social media posts
- 2 Education materials created/updated
- 1 Community Update sent out
- 1 LTCF Update sent out

INCREASED CASES OF RSV, ACTIONS TO TAKE

The Michigan Hospital Association is raising awareness about a pediatric hospital bed shortage and urging the public to help prevent respiratory illnesses, which are rapidly spreading in the form of respiratory syncytial virus (RSV) cases. Read more [here](#).

Individuals with cold-like symptoms should limit their interaction with children at high risk for severe RSV disease. **Those at greatest risk for severe illness from RSV include premature infants, children younger than 2 years old with chronic lung or heart conditions and children with weakened immune systems.** RSV is a common respiratory virus that usually causes mild, cold-like symptoms but can be particularly serious for infants and older adults.

Tips for the public:

- **DON'T:** Seek hospital emergency care for non-emergency medical conditions, such as mild symptoms and routine testing.
- **DO:** Seek hospital emergency care if symptoms are worrisome and emergency care is needed. Emergency medical conditions can include difficulty breathing, dehydration and worsening symptoms.
- **DO:** Immediately get vaccinated against respiratory illnesses. Visit www.vaccines.gov to search for vaccine availability or call your provider or the local health department.
- **DO:** Be patient if seeking care through a hospital emergency department. Consider that wait times may be elevated as respiratory illnesses reach seasonal peak levels.
- **DO:** Consider having your children wear a mask in public places including school when you know local case rates of respiratory illnesses are high.
- **DO:** Practice frequent and proper hand washing and stay home if you're not feeling well.

To help prevent the spread of RSV and other respiratory viruses:

- Get vaccinated/boosted for influenza and COVID-19
- Stay home if sick, even when testing negative for COVID-19
- Wear a well-fitting mask if sick, and being around others is unavoidable
- Wash your hands often with soap and water for at least 20 seconds
- Avoid close contact, such as kissing, shaking hands, and sharing cups and eating utensils with others
- Clean frequently touched surfaces such as doorknobs and mobile devices
- Cover your coughs and sneezes with a tissue or your upper shirt sleeve, not your hands

Know the signs and symptoms of severe RSV infection in infants:

- Short, shallow, and rapid breathing
- Struggling to breathe — chest muscles and skin pull inward with each breath
- Cough
- Poor feeding
- Unusual tiredness
- Irritability

Seek immediate medical attention if a child or anyone at risk of severe RSV infection has difficulty breathing, a high fever, or a blue color to the skin, particularly on the lips and in the nail beds.

For more information on RSV, visit: <https://www.cdc.gov/rsv/index.html>

FLU, COMMON COLD, COVID-19, OR ALLERGIES?

As we start spending more time indoors and enter respiratory virus season, it can be hard to tell if you have the flu, a common cold, COVID-19, or allergies. A lot of the symptoms overlap, but the onset of symptoms varies with each illness.

Data as of November 7, 2022

Refer to the links below for symptom onset:

Symptom	COVID-19	Cold	Flu	Allergies
Headache	Usually	Rare	Usually	Rare
Cough	Usually (dry)	Usually	Usually	Sometimes
Muscle aches	Usually	Sometimes	Usually	Never
Tiredness	Usually	Sometimes	Usually	Sometimes
Sneezing	Rarely	Usually	-	Usually
Sore Throat	Usually	Usually	Usually	Rarely
Runny/stuffy nose	Usually	Usually	Usually	Usually
Fever	Usually	Sometimes	Usually	Never
Diarrhea	Sometimes	Never	Sometimes	Never
Nausea or vomiting	Sometimes	-	Sometimes	Never
New loss of taste/smell	Usually	Sometimes*	Rarely	Sometimes*
Itchy nose, eyes, mouth, ears	Never	-	-	Usually
Pink Eye	Sometimes	-	-	Sometimes
Short of breath, difficulty breathing	Usually	-	Usually	-

*New loss of taste/smell may be due to runny or stuffy nose

- [COVID-19](#): Symptoms may appear 2-14 days after exposure to the virus.
- [Common Cold \(often due to rhinoviruses\)](#): Symptoms onset is gradual within 1-4 days after catching a cold virus. Usually, recover within 7-10 days.
- [Flu \(Influenza\)](#): Symptoms usually come on suddenly.
- [Allergies](#): Comes and goes over several weeks to months depending on allergens.

How to prevent a cold, the flu, and COVID-19:

- Get vaccinated against flu and COVID-19.
- Avoid close contact with anyone who is sick or has symptoms.
- Keep distance between yourself and others when you're in indoor public spaces.
- Wear a face mask in indoor public spaces if you're in an area with a high number of people with COVID-19 in the hospital and new COVID-19 cases, whether or not you're vaccinated.
- Wash your hands often with soap and water for at least 20 seconds, or use an alcohol-based hand sanitizer that contains at least 60% alcohol.
- Avoid crowded indoor spaces and indoor places that have poor air flow.
- Cover your mouth and nose with the inside of your elbow or a tissue when you cough or sneeze.
- Avoid touching your eyes, nose and mouth.
- Avoid sharing dishes, glasses, towels, bedding and other household items if you're sick.
- Regularly clean and disinfect high-touch surfaces, such as doorknobs, light switches, electronics and counters.
- Stay home from work, school and public areas and stay in isolation at home if you're sick.

AT-HOME COVID-19 TESTS: WHEN TO TEST AND ACCURACY OF TESTS

COVID-19 at-home tests, also known as self-tests, give rapid results and can be taken anywhere, regardless of your vaccination status or whether or not you have symptoms. These tests detect current infection of COVID-19. At-home tests **do not** detect antibodies – which would indicate a previous infection – and **do not** measure your level of immunity.

You should take a test if:

1. You have symptoms of COVID-19, such as:
 - Fever/chills
 - Cough
 - Shortness of breath/difficulty breathing
 - Fatigue
 - Muscle aches/body aches
 - Headache
 - New loss of taste or smell
 - Sore throat

- Congestion or runny nose
 - Nausea/vomiting
 - Diarrhea
2. You were exposed to someone with COVID-19:
 - Test at least 5 days after your exposure
 - **If you test negative** for COVID-19, consider testing again 1 to 2 days after your first test
 3. You are going to an indoor event or gathering

Accuracy of tests:

At-home COVID-19 antigen tests are generally expected to detect the SARS-CoV-2 virus at least [80% of the time when someone is infected](#), and are most accurate at detecting COVID-19 when individuals are symptomatic. They are not as accurate at detecting low levels of SARS-CoV-2 virus—like during the first few days of infection or after an individual starts to feel better.

A positive result on an at-home antigen test is a strong indicator you have COVID-19. A negative result should be taken under consideration due to:

- Testing too early (fewer than 5 days after an exposure)
- Having a very mild case, or you’re starting to feel better
- Not getting a good swab from inside your nose
- Not using the test correctly, or using a damaged or expired test
- Having a variant of COVID-19 not detected by the test

If you have a negative test:

- The test did not detect the virus, but that doesn’t rule out an infection.
- Consider repeating the test 24-48 hours later. Multiple negative tests increase the likelihood that you are not infected with the virus that causes COVID-19.

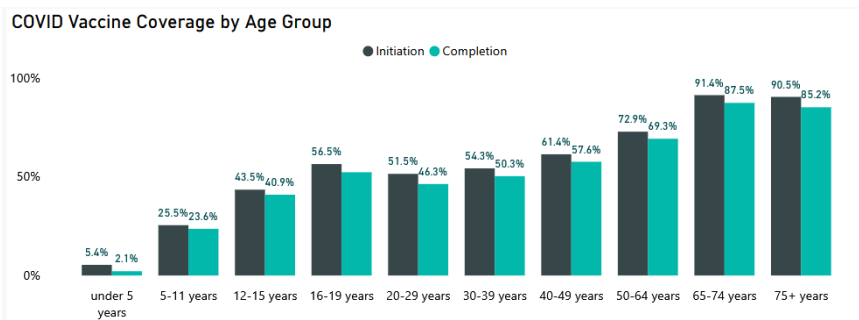
Where to find at-home tests:

- Free at-home test kits are available for you to order for your household from project act at accesscovidtests.org. You can order new test kits for your household each month – (beginning on the 1st of each month).
- Local libraries in Allegan County, such as Fennville District Library and Allegan District Library may have free at-home tests available for you to pick up. Please call first for availability.
- Buy tests online or in pharmacies and retail stores. Private health insurance may reimburse the cost of purchasing self-tests. Visit [FDA’s website](#) for a list of authorized tests.

If your at-home test results do not make sense to you, talk to your healthcare provider or find other ways of testing near you at solvhealth.com/covid-testing or [MDHHS Community Testing Events](#).

COMMUNITY VACCINATION/HERD IMMUNITY/TREATMENT

COVID-19 VACCINE COVERAGE



VACCINATION COVERAGE BY AGE GROUP

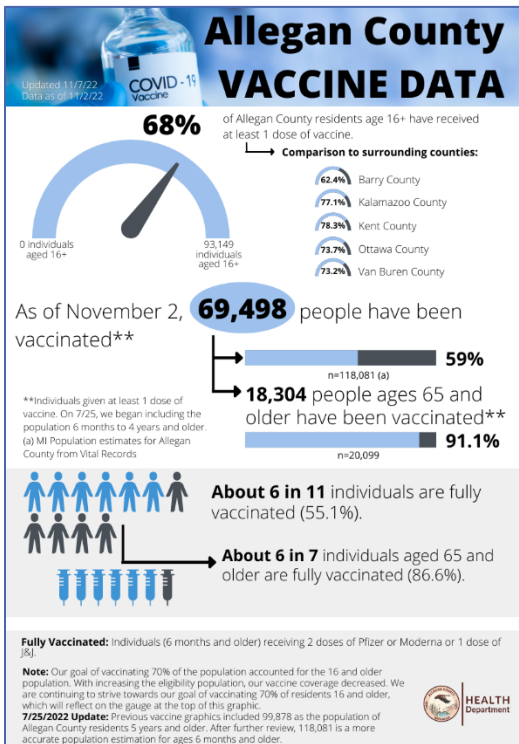
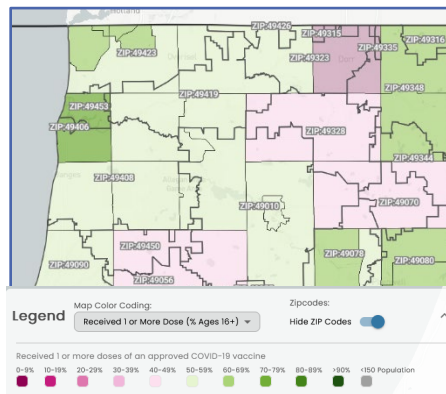
Data as of 11/4/2022

Explore the [MI Vaccine Dashboard](#) for the latest data. It is updated weekly on Wednesdays. The map on the left displays vaccine coverage for Allegan County. See Previous Reports for updates on Vaccine Coverage [here](#).

Data as of November 7, 2022

VACCINATION COVERAGE BY ZIP CODE

The map on the right shows the vaccination rates for residents aged 16 and older who received at least one dose of vaccine. The data is at the census tract¹¹-level (colored sections) with an overlay of Allegan zip codes. Areas in the center of the county, with lower population counts, appear to have the lowest vaccination rates, while perimeter areas on the East and West sides of the county have higher vaccination rates overall. This data is based on a total population count of 115,250 as recorded in the 2018 US Census.



VACCINE AVAILABILITY

Residents are encouraged to visit www.vaccines.gov to find vaccination clinics near them, or call ACHD at 269-673-5411 to schedule an appointment.

VACCINE EFFECTIVENESS (VE)

Current [data](#) continues to show that COVID-19 vaccines are an important layer in reducing the severity of illness, and the burden of hospitalizations and deaths in children, adolescents, and adults, even with the emergence of the predominant new Omicron variants such as BA.4 and BA.5.

Being [up to date](#) on COVID-19 vaccines is crucial in reducing the burden of hospitalizations and deaths. Refer to further data from the CDC studies on nationwide COVID-19 VE Surveillance [here](#).

BREAKTHROUGH SURVEILLANCE DATA: For more information and the latest data on the rates of COVID-19 breakthrough cases, hospitalizations, and deaths, please refer to [CDC COVID Data Tracker: Rates of COVID-19 Cases and Deaths by Vaccination Status](#)

LOCAL HEALTH DEPARTMENT (LHD) BREAKTHROUGH DATA DISTRIBUTION

Refer to the [report from 6/21/22](#) for updates regarding breakthrough data distribution.

COVID-19 SURVEILLANCE			
7-DAY METRICS ¹²	STATEWIDE (as of 11/2/22)	NATIONWIDE (as of 11/2/22)	GLOBAL (as of 11/6/22)
Cases	11,651	273,110	2.356M
Hospital Admissions	144	3,272	No data available
Deaths	157	2,504	11.32K
Percent Population Fully Vaccinated	65.4%	68.5%	No data available
Percent Positivity	10-14.9 %	8.8%	No data available

STATEWIDE (MICHIGAN)

- Find the latest [Michigan Coronavirus Data](#).

¹¹ Census tracts are geographic entities within counties with similar characteristics such as population traits, school enrollment, poverty level, median household income, housing vacancy, etc.

¹² Statewide and Nationwide data [COVID Data Tracker Weekly Review | CDC](#); Global data update as of 9/18/2022 [COVID-19 Map - Johns Hopkins Coronavirus Resource Center \(jhu.edu\)](#)

- Refer to the [November 1, 2022 MDHHS data and modeling](#) for current trends on cases, hospitalizations, and deaths associated with COVID-19.
- For more information and data on seasonal projections of cases, hospitalizations, and deaths, visit [COVID-19 Scenario Modeling Hub](#).

NATIONWIDE (UNITED STATES)

- Find the latest Nationwide data on [CDC's Cases and Data website](#).
- For more information refer to the [CDC COVID Data Tracker Weekly Review](#)

GLOBAL

- For additional information and the global pandemic data, refer to [WHO's weekly Epidemiological Situation Report](#)
- For more information on currently circulating variants¹³ (including VOIs, VUMs, and VOCs) and its classifications, visit [Tracking SARS-CoV-2 Variants](#)

WASTEWATER SURVEILLANCE

See the most recent [MDHHS data and modeling update](#) for the Michigan SWEEP Sentinel Wastewater Summary.

Hope College has collaborated with ACHD to produce a dashboard, which displays the most recent wastewater readings and case counts.



Allegan Sewershed Sites	Trend Dates	Current Trend Patterns
TPA	10/31/2022	Increasing
TPP	11/2/2022	Decreasing
TPDS	11/1/2022	Increasing

With this dashboard, ACHD has been able to forecast a rise in cases, which has improved mitigation responses.

The table above shows three Allegan sewer shed sites that has the most current and accurate data readings.

The adjacent map shows current wastewater sewer shed sites that Hope College is monitoring in Allegan County.

The colored circles¹⁴ of differing sizes represent the concentration of COVID-19 in the wastewater as of November

3, 2022 (TPA¹⁵, TPP¹⁶, TPDS¹⁷), which have existing data points for the most recent nine calendar days (10/26/2022 – 11/3/2022). Read more about the [method of using wastewater surveillance data](#), to monitor case patterns at individual and population levels as it relates to the SARS-CoV-2 infection.

EMERGING VARIANT UPDATES

- See [CDC Nowcast Projections](#) (nationwide) for data estimations on the predominant Omicron sublineages and additional information on CDC's monitoring of nationwide variant proportions [here](#).
- See the most recent [MDHHS data and modeling update](#) for the latest variant information.
- ACHD continues to monitor all Omicron sub-lineages and deploy response measures accordingly.

EPIDEMIOLOGIC SURVEILLANCE

MONKEYPOX (MPV)

¹³ SARS-CoV-2 variants include variants of interest (VOI), variants under monitoring (VUM), and variants of concern (VOC)

¹⁴ The areas with red circles seen on the map correlate with the increase in cases at LTCFs and other congregate care facilities during this reporting period

¹⁵ Allegan Water Resource Recovery Facility

¹⁶ Plainwell Wastewater Treatment Plant

¹⁷ Douglas/Saugatuck Wastewater Treatment Plant

For background information on MPV, refer to the [6/21/22 report](#).

UPDATES: Refer to the following links to view MDHHS and the CDC's MPV Situation Summary:

- [Michigan Case Counts](#)
- [2022 U.S. Map & Case Count](#)
- [2022 Monkeypox Outbreak Global Map](#)
- [State trends show an overall decrease of new cases by onset date of illness](#)

HIGHLY PATHOGENIC AVIAN INFLUENZA (HPAI)

HPAI has been detected in 63 out of 83 counties in Michigan including Allegan County (1 confirmed case).

RECENT EMERGING HEALTH THREATS: AT A QUICK GLANCE

Arboviruses

- **UPDATES:** [Michigan Weekly Arbovirus Summary November 4, 2022](#) and the Annual EZID Surveillance Summary for 2021 can be found [here](#).

Rabies

- As of October 19, 2022, Rabies-positive animals in Michigan include **42 Bats** and **1 Skunk**. For positive animal counts by county, see this [map](#). There have been two bats in Allegan County that tested positive for rabies.

Ebola

- On September 20, 2022, the Ugandan Ministry of Health confirmed an outbreak of Ebola virus disease (EVD) (Sudan virus) in western Uganda. There are no cases of Ebola in the U.S., and the risk of the virus remains low domestically. The U.S. announced it will screen air passengers from Uganda, and that flights from Uganda are being redirected to one of five U.S. airports (Chicago is the closest one to Allegan County).
- MDHHS will share information with the local health department on travelers from Uganda. Local health departments will conduct a risk assessment and share health education information including, signs and symptoms of Ebola, what to do if symptoms occur, and how to notify public health officials should symptoms appear. The monitoring period for travelers coming from Uganda is 21 days.
- Please see the Centers for Disease Control and Prevention Ebola website for the most current information. www.cdc.gov/ebola

SOURCES

- [Allegan County Health Department Facebook page](#)
- [Centers for Disease Control and Prevention](#)
- [CDC COVID-19 Booster Interactive Tool](#)
- [CDC COVID-19 Data Tracker](#)
- [CDC Current Outbreak List | CDC](#)
- [CDC Flu](#)
- [CDC Health Alert Network](#)
- [CDC MPV Vaccine Locator](#)
- [CDC Provisional COVID-19 Deaths: Focus on Ages 0-18 Years](#)
- [CDC Stay Up-to-date on Vaccinations](#)
- [Find a COVID-19 Vaccine Near You](#)
- [Infection Control: Severe acute respiratory syndrome coronavirus 2 \(SARS-CoV-2\)](#)
- [Interim Guidance for Managing Healthcare Personnel with SARS-CoV-2 Infection or Exposure to SARS-CoV-2 | CDC](#)
- [Lighthouse \(mi-lighthouse.org\)](#)
- [Long Term Care Data](#)
- [MDHHS Monkeypox Page](#)
- [MDHHS School Outbreak Reporting](#)
- [MDHHS: School Age Case Data Dashboard](#)
- [MI Bridges](#)
- [MI COVID response Data and Modeling](#)
- [MI Weekly Arbovirus Summary, 2022 \(michigan.gov\)](#)
- [Michigan Coronavirus: COVID-19 Vaccine](#)
- [Michigan COVID-19 Wastewater Testing and SWEEP Dashboard](#)
- [Michigan Coronavirus Data](#)
- [Michigan Department of Health and Human Services \(MDHHS\) Breakthrough Cases Data File](#)
- [Michigan Disease Surveillance System \(MDSS\)](#)
- [Michigan DNR Eyes in the Field](#)
- [FDA At-home tests](#)
- [COVID-19 Bivalent Vaccine Boosters FDA page](#)
- [COVID Data Tracker Weekly Review](#)
- [COVID-19 Vaccine Dashboard](#)
- [COVID-19, Cold, Allergies, and Flu Difference](#)
- [CHN Associates, Student, and Family Assistance Program Monthly Report](#)
- [Division of Vector-Borne Diseases \(DVBD\) | Division of Vector-Borne Diseases | NCEZID | CDC](#)
- [Ebola Disease caused by Sudan virus – Uganda \(who.int\)](#)
- [Michigan Health Alert Network \(MIHAN\)](#)
- [MHA: RSV Awareness](#)
- [MI Safe Start Map and CDC Indicators](#)
- [New COVID-19 Cases Worldwide - Johns Hopkins Coronavirus Resource Center \(jhu.edu\)](#)
- [Office of International Health and Biodefense - United States Department of State](#)
- [Our World in Data - Coronavirus \(COVID-19\) Hospitalizations](#)
- [Previous BOC report from September 22, 2022](#)
- [Sewer Coronavirus Alert Network \(SCAN\) \(wastewaterscan.org\)](#)
- [US Food and Drug Administration](#)
- [World Health Organization Coronavirus Dashboard](#)
- <https://www.who.int/emergencies/diseases/novel-coronavirus-who> Coronavirus disease (COVID-19) Weekly Epidemiological Update and Weekly Operational Update2019/situation-reports

Allegan County COVID-19 Community Level: LOW

Allegan County Health Department recommends everyone to:

Stay up to date on your COVID-19 Vaccines

Get tested if you have symptoms, before and after traveling, and before gathering with others.

Actions including social distancing, frequent handwashing, wearing a well-fitted face mask, and isolation help lessen the level of transmission. People may choose to mask at any time.

People with symptoms, a positive test, or exposure to someone with COVID-19 should wear a mask.



Learn more about CDC's COVID-19 Community Levels by visiting www.covid.cdc.gov

#DoYourPart

Allegan County COVID-19 Community Level: LOW

Pick-up Free Masks

- Monday-Friday 8:30am to 4:30pm at the Allegan County Health Department (3255 122nd Ave, Allegan)
 - As supplies last
- At select local units of government and libraries.
 - Visit allegancounty.org/covid to view the list of agencies under our Mask Information page.

Find COVID-19 Treatments

- Find information and options near you: michigan.gov/covid19therapy
- View a test to treat location near you: aspr.hhs.gov/TestToTreat
- Talk to your doctor about treatment options if you test positive for COVID-19.

Get Tested:

- Pick-up test kits locally:
 - Visit www.allegancounty.org/covid to view pick-up locations under our Testing page.
- Find a community testing site near you at:
 - Allegan County Transportation Building (750 Airway Dr, Allegan) on Wednesdays and Fridays from 12 pm to 5 pm.
 - Visit www.solvehealth.com for more locations near you.

Stay up-to-date on COVID-19 Vaccines

- Find vaccine clinics near you at vaccines.gov
- Or call ACHD at 269-673-5411 to schedule an appointment



Follow CDC's isolation guidelines and stay home if you develop symptoms or test positive.

#DoYourPart

FREE AT-HOME TEST KITS FROM MDHHS AVAILABLE AT 2 LIBRARIES IN ALLEGAN COUNTY:

- Allegan District Library (331 Hubbard St, Allegan)
- Fennville District Library (400 W Main St, Fennville)

FREE COMMUNITY TESTING EVENTS ARE HELD EVERY WEDNESDAY AND FRIDAY AT THE ALLEGAN COUNTY TRANSPORTATION BUILDING FROM 12 PM – 5 PM. THESE EVENTS OFFER PCR AND RAPID TESTING OPTIONS.

VISIT THE [MDHHS COMMUNITY BASED POP-UP TESTING PAGE](#) TO SIGN UP FOR THE TESTING EVENTS AT ALLEGAN TRANSPORTATION BUILDING AND TO FIND OTHER TESTING SITES NEAR YOU.

Visit <https://www.solvehealth.com/covid-testing> to find additional COVID-19 sites near you.

COVID-19 testing location finder: [Coronavirus - Test](#)

If residents are struggling to find accessible testing, they can call ACHD at 269-673-5411 option 2 and we can help them navigate the systems.

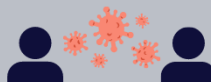
MONKEYPOX: What to Know



How it spreads:

- Direct contact with the infectious rash, scabs, or body fluids
- Respiratory secretions during prolonged, face-to-face contact, or during intimate physical contact, such as kissing, cuddling, or sex
- Touching items (such as clothing or linens) that previously touched the infectious rash or body fluids
- Pregnant people can spread the virus to their fetus through the placenta

The illness typically lasts 2-4 weeks. People who do not have monkeypox symptoms cannot spread the virus to others.



Symptoms:

- Fever
- Headache
- Muscle aches and backaches
- Chills
- Exhaustion
- Swollen lymph nodes
- A rash that can look like pimples or blisters

Prevention:

- Avoid close, skin-to-skin contact with people who have a rash that looks like monkeypox.
- Do not touch the rash or scabs of a person with monkeypox.
- Do not kiss, hug, cuddle or have sex with someone with monkeypox.



- Do not share eating utensils or cups with a person with monkeypox.
- Do not handle or touch the bedding, towels, or clothing of a person with monkeypox.
- Wash your hands often with soap and water or use an alcohol-based hand sanitizer

If you feel sick or have symptoms, do not attend any gathering, and contact your healthcare provider.